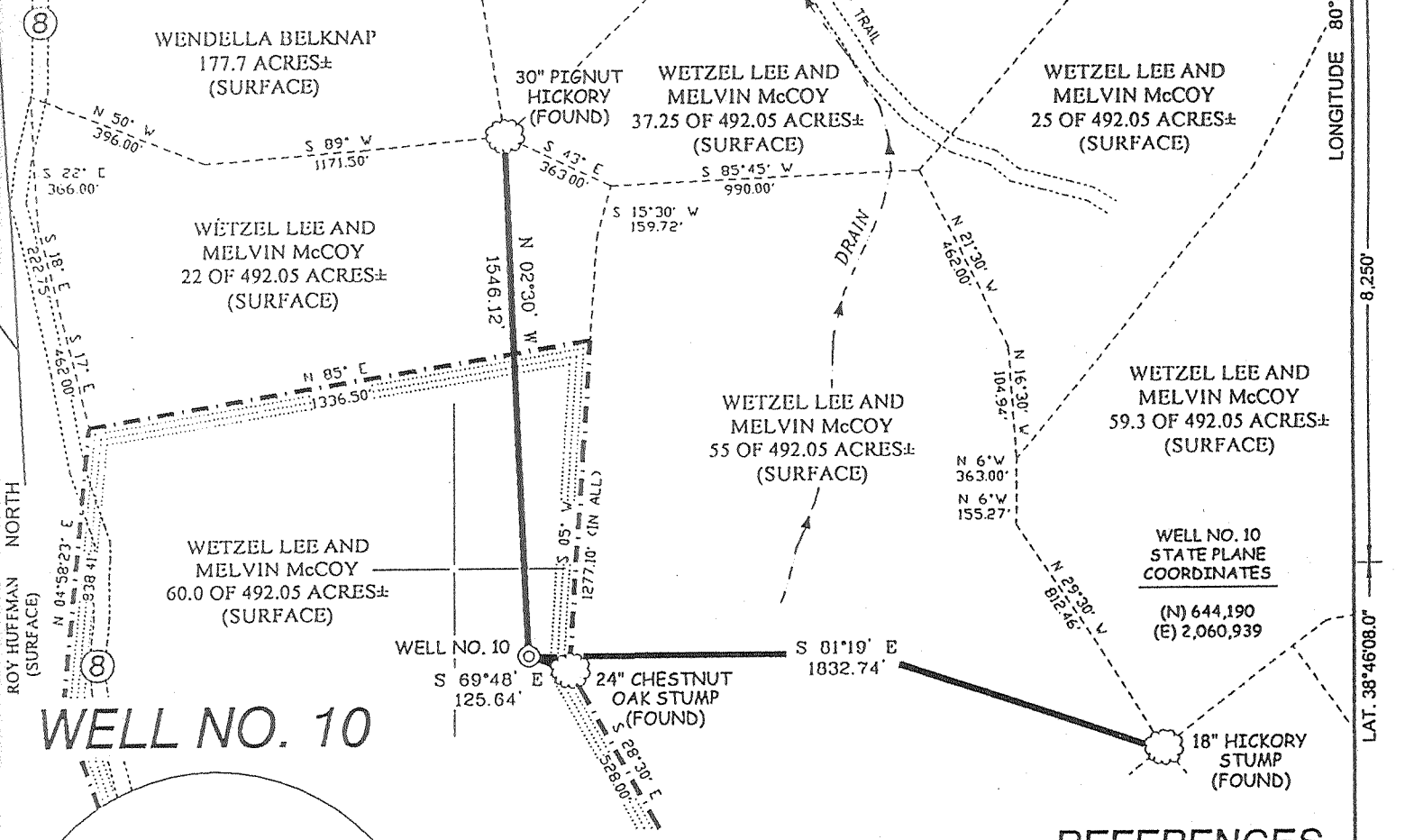
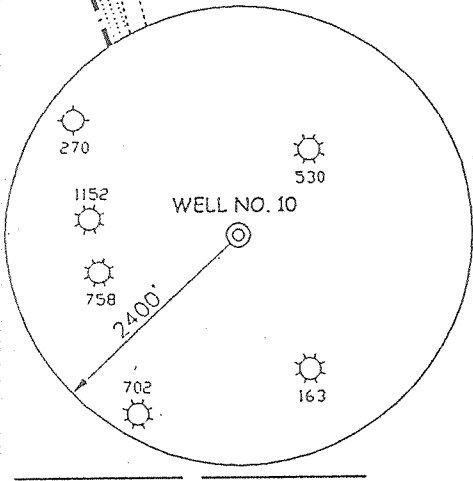


# FREDRICK BELKNAP LEASE 60 ACRES ±



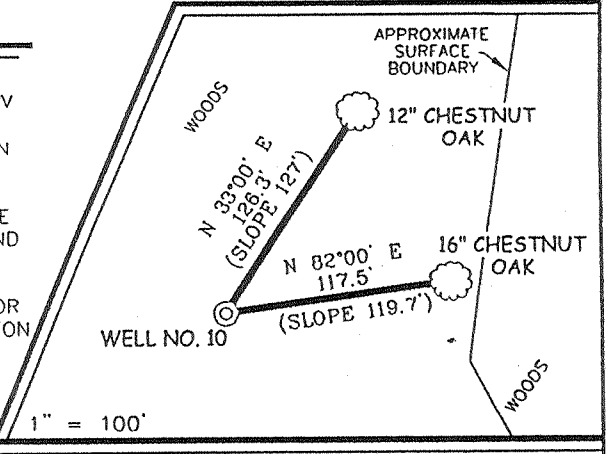
## WELL NO. 10



### NOTES ON SURVEY

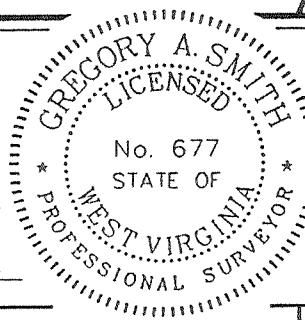
1. TIES TO WELLS AND CORNERS ARE BASED ON STATE PLANE GRID NORTH WV SOUTH ZONE NAD '27.
2. TIES TO REFERENCES ARE BASED ON MAGNETIC NORTH 1/14/04
3. LEASE BOUNDARY SHOWN HEREON TAKEN FROM DEED BOOK 415 ON PAGE 162, DEED BOOK 287 ON PAGE 214 AND DEED BOOK 125 ON PAGE 99.
4. SURFACE OWNER AND ADJOINER INFORMATION TAKEN FROM THE ASSESSOR AND COUNTY CLERK RECORDS OF BRAXTON COUNTY IN JANUARY, 2004.
5. WELL LAT./LONG. ESTABLISHED BY DGPS (SUBMETER MAPPING GRADE).

### REFERENCES



I THE UNDERSIGNED, HEREBY CERTIFY THAT THIS PLAT IS CORRECT TO THE BEST OF MY KNOWLEDGE AND BELIEF AND SHOWS ALL THE INFORMATION REQUIRED BY LAW AND THE REGULATIONS ISSUED AND PRESCRIBED BY THE DIVISION OF ENVIRONMENTAL PROTECTION.

P.S. *Gregory A. Smith*  
677



(+) DENOTES LOCATION OF WELL ON UNITED STATES TOPOGRAPHIC MAPS.  
DATE FEBRUARY 25, 20 04  
OPERATORS WELL NO. BELKNAP NO. 10  
API WELL NO. 47 - 007 - 2364  
STATE COUNTY PERMIT

MINIMUM DEGREE OF ACCURACY 1/200 FILE NO. 5376P10 (157-74)  
PROVEN SOURCE OF ELEVATION DGPS (SUBMETER MAPPING GRADE) SCALE 1" = 500'

STATE OF WEST VIRGINIA  
DIVISION OF ENVIRONMENTAL PROTECTION  
OFFICE OF OIL AND GAS

WELL TYPE: OIL  GAS  LIQUID INJECTION  WASTE DISPOSAL  IF "GAS" PRODUCTION  STORAGE  DEEP  SHALLOW

LOCATION: ELEVATION 1,420' WATERSHED TRACE RUN OF CEDAR CREEK  
DISTRICT OTTER COUNTY BRAXTON QUADRANGLE CEDARVILLE 7.5'

SURFACE OWNER WETZEL LEE AND MELVIN McCOY ACREAGE 492.05±  
ROYALTY OWNER FREDRICK D. BELKNAP, ET AL LEASE ACREAGE 60±  
PROPOSED WORK: LEASE NO. \_\_\_\_\_  
DRILL  CONVERT  DRILL DEEPER  REDRILL  FRACTURE OR STIMULATE  PLUG OFF OLD FORMATION   
FORMATION  PERFORATE NEW FORMATION  PLUG AND ABANDON  CLEAN OUT AND REPLUG  OTHER   
PHYSICAL CHANGE IN WELL (SPECIFY) \_\_\_\_\_ TARGET FORMATION BENSON  
ESTIMATED DEPTH 5,000'

WELL OPERATOR P. D. L. SERVICES, INC. DESIGNATED AGENT WADE BELKNAP  
ADDRESS 3526 BAIRD AVENUE S.E. PARIS, OH 44669 ADDRESS P.O. BOX 3 EXCHANGE, WV 26619

COUNTY NAME BRAXTON  
PERMIT 2364

183-66

APR 23 2004

WR-35  
Rev (5-01)

DATE: Oct. 11, 2006  
API #: 47-702364

State of West Virginia  
Department of Environmental Protection  
Office of Oil and Gas

Well Operator's Report of Well Work

Farm name: BELKNAP Operator Well No.: BELKNAP #10  
McCoy, Wetzel, + Melvin

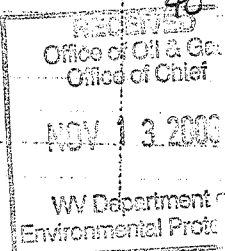
LOCATION: Elevation: 1,420' Quadrangle: Cedarville 7.5'

District: OTTER County: Braxton

Latitude: 8,250' Feet South of 38° Deg. 46' Min. 08.0" Sec.  
Longitude 10,290' Feet West of 80° Deg. 47' Min. 10.6" Sec.

Company: P.A.H. SERVICES INC.  
2095 Leisure Rd NW

Address:	Casing & Tubing	Used in drilling	Left in well	Cement fill up Cu. Ft.
<u>Minnua OH 44657</u>	<u>8"</u>		<u>800'</u>	<u>190 Sacks</u>
Agent: <u>Wade Belknap</u>				
Inspector: <u>Craig Duckworth</u>				
Date Permit Issued: <u>4-22-2004</u>				
Date Well Work Commenced: <u>5-01-2005</u>	<u>4 1/2"</u>	<u>2418</u>	<u>2360'</u>	<u>200 Sacks</u>
Date Well Work Completed: <u>7-12-2005</u>				
Verbal Plugging:				
Date Permission granted on:				
Return Cable				
Total Depth (feet): <u>2418'</u> Rig	<u>13" -</u>		<u>40'</u>	
Fresh Water Depth (ft.): <u>* Dry *</u>	<u>Conductor pipe</u>			
Salt Water Depth (ft.): <u>2,263'</u>				
Is coal being mined in area (Y/N)?				
Coal Depths (ft.): <u>N/A</u>				



OPEN FLOW DATA

Producing formation: 2<sup>nd</sup> + 3<sup>rd</sup> Salt Sand  
Onium  
Pay zone depth (ft): 1220'  
Gas: Initial open flow 250,000 MCF/d Oil: Initial open flow N/A Bbl/d  
Final open flow 40,000 MCF/d Final open flow 0 Bbl/d  
Time of open flow between initial and final tests 4 Hours  
Static rock Pressure 510 psig (surface pressure) after 24 Hours

Second producing formation: all combined  
Pay zone depth (ft):  
Gas: Initial open flow \_\_\_\_\_ MCF/d Oil: Initial open flow \_\_\_\_\_ Bbl/d  
Final open flow \_\_\_\_\_ MCF/d Final open flow \_\_\_\_\_ Bbl/d  
Time of open flow between initial and final tests \_\_\_\_\_ Hours  
Static rock Pressure \_\_\_\_\_ psig (surface pressure) after \_\_\_\_\_ Hours

NOTE: ON BACK OF THIS FORM PUT THE FOLLOWING: 1. DETAILS OF PERFORATED INTERVALS, FRACTURING OR STIMULATING, PHYSICAL CHANGE, ETC. 2. THE WELL

BRA 2364

LOG WHICH IS A SYSTEMATIC DETAILED GEOLOGICAL RECORD OF ALL  
FORMATIONS  
INCLUDING COAL ENCOUNTERED BY THE WELLBORE.

Signed:

By: Don Bellamy  
Date: Oct. 11, 2006

DEC 08 2006

BPA 23104

WR-35  
Rev (5-01)

DATE: Oct. 11, 2006  
API #: 47-702304

State of West Virginia  
Department of Environmental Protection  
Office of Oil and Gas

Well Operator's Report of Well Work

Farm name: BELKNAP Operator Well No.: BELKNAP #10  
McCoy, Wetzel, + Melvin

LOCATION: Elevation: 1,420' Quadrangle: Cedarville 7.5'

District: OTTER County: Braxton

Latitude: 8,250 Feet South of 38° Deg. 46' Min. 08.0" Sec.  
Longitude 10,280' Feet West of 80° Deg. 47' Min. 10.6" Sec.

Company: P.A.H. SERVICES INC.  
2095 Leisure Rd NW

Address:	Casing & Tubing	Used in drilling	Left in well	Cement fill up Cu. Ft.
<u>Minerva, OH 44657</u>	<u>8"</u>		<u>800'</u>	<u>190 Sacks</u>
Agent: <u>Wade Belknap</u>				
Inspector: <u>Craig Duckworth</u>				
Date Permit Issued: <u>4-22-2004</u>				
Date Well Work Commenced: <u>5-01-2005</u>	<u>4 1/2"</u>	<u>2418</u>	<u>2340'</u>	<u>200 Sacks</u>
Date Well Work Completed: <u>7-12-2005</u>				
Verbal Plugging:				
Date Permission granted on:				
(Return) <u>Cable</u> Rig				
Total Depth (feet): <u>2418'</u>	<u>13" =</u>		<u>40'</u>	
Fresh Water Depth (ft.): <u>* Dry *</u>	<u>Conductor pipe</u>			
Salt Water Depth (ft.): <u>2,263'</u>				
Is rock being mined in area (N/Y)?				
Coal Depth (ft.): <u>N/A</u>				

Office of Oil & Gas  
Chief of Chief  
NOV 13 2006  
WV Department  
Environmental Prot.

OPEN FLOW DATA 2 + 3 1/4 Salt Sand  
Inj

Producing formation: Inj Pay zone depth (ft) 1220'  
Gas initial open flow 250,000 MCF/D Oil initial open flow N/A Bbl/d  
Final open flow 40,000 MCF/D Final open flow N/A Bbl/d  
Time of open flow between initial and final tests 4 Hours  
Static rock Pressure 510 psig (surface pressure) after 24 Hours

Second producing formation: All Combined Pay zone depth (ft)  
Gas initial open flow N/A MCF/D Oil initial open flow N/A Bbl/d  
Final open flow N/A MCF/D Final open flow N/A Bbl/d  
Time of open flow between initial and final tests N/A Hours  
Static rock Pressure N/A psig (surface pressure) after N/A Hours

DEC 08 2006  
DEC 06 2006

NOTE: ON BACK OF THIS FORM PUT THE FOLLOWING: 1) DETAILS OF PERFORATED INTERVALS, FRACTURING OR STIMULATING, PHYSICAL CHANGE, ETC. 2) THE WELL

BRN  
23004