

WW-7
8-30-06



West Virginia Department of Environmental Protection
Office of Oil and Gas

WELL LOCATION FORM: GPS

API: 47-001-02834 WELL NO.: Coal Quest #4

FARM NAME: Beckwith Lumber Company

RESPONSIBLE PARTY NAME: Summit Appalachia Operating

COUNTY: Barbour DISTRICT: Pleasant

QUADRANGLE: Philippi

SURFACE OWNER: Beckwith Lumber Company

ROYALTY OWNER: _____

UTM GPS NORTHING: 4,343,272.29

UTM GPS EASTING: 572,715.55 GPS ELEVATION: 1260'

The Responsible Party named above has chosen to submit GPS coordinates in lieu of preparing a new well location plat for a plugging permit or assigned API number on the above well. The Office of Oil and Gas will not accept GPS coordinates that do not meet the following requirements:

1. Datum: NAD 1983, Zone: 17 North, Coordinate Units: meters, Altitude: height above mean sea level (MSL) – meters.
2. Accuracy to Datum – 3.05 meters
3. Data Collection Method:

Survey grade GPS ____: Post Processed Differential ____

Real-Time Differential ____

Mapping Grade GPS X: Post Processed Differential ____

Real-Time Differential ____

4. **Letter size copy of the topography map showing the well location.**

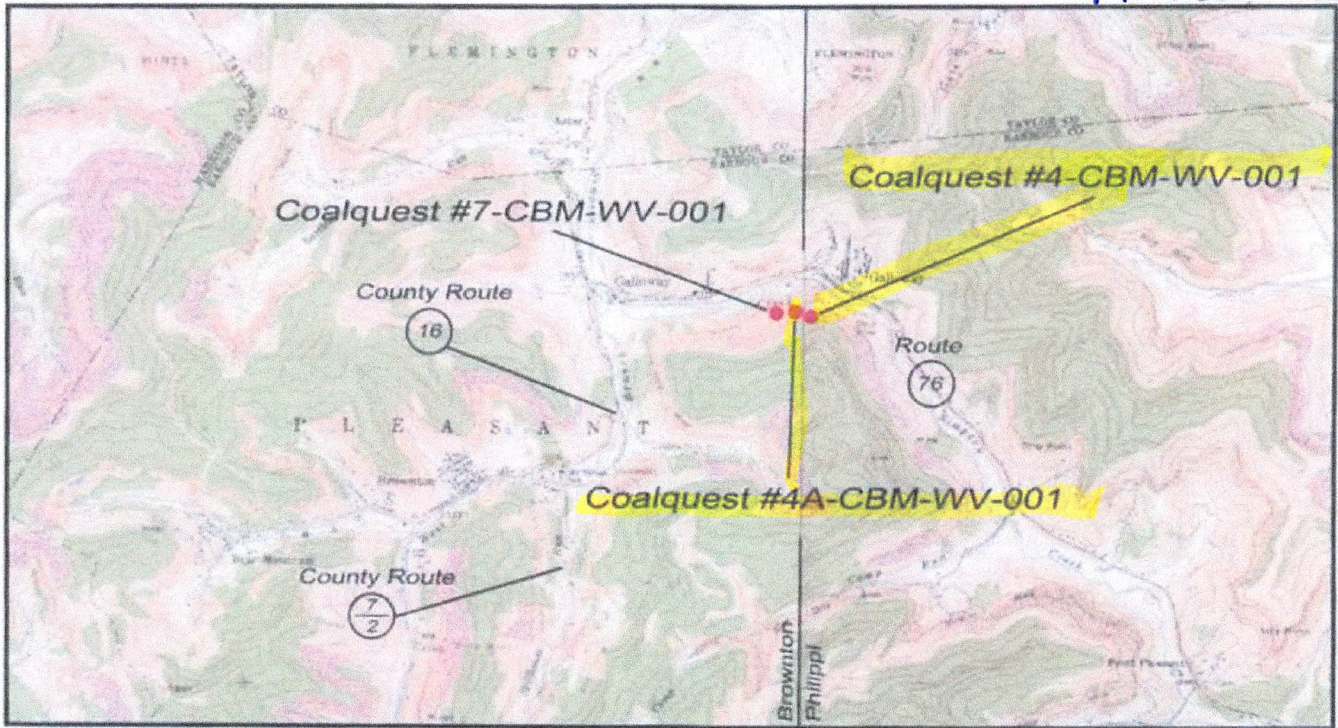
I the undersigned, hereby certify this data is correct to the best of my knowledge and belief and shows all the information required by law and the regulations issued and prescribed by the Office of Oil and Gas.

Jeff Crisp
Signature

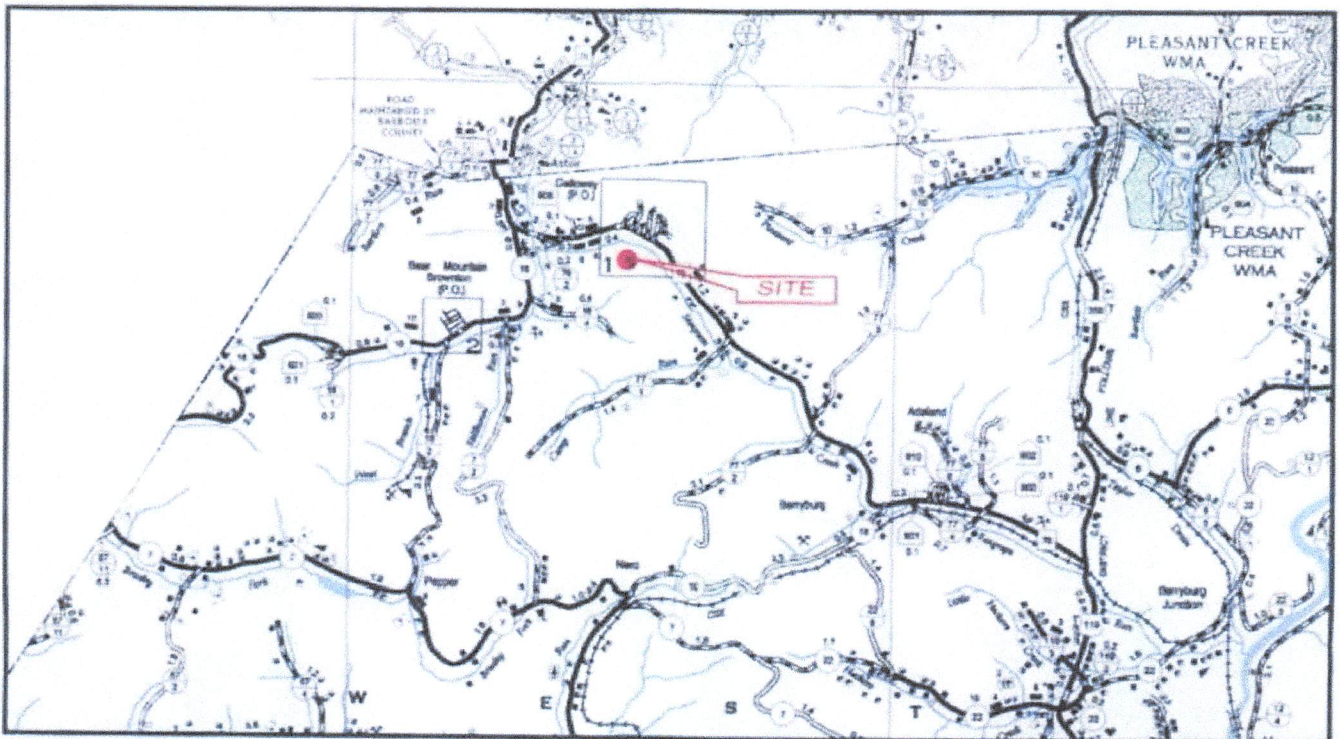
SR. Production Foreman
Title

4-28-20
Date

RECEIVED
Office of Oil and Gas
MAY 13 2020
WV Department of
Environmental Protection



Brownton Quad 1" = 4000'



County Highway Map 1" = Approx. 1.5 Miles

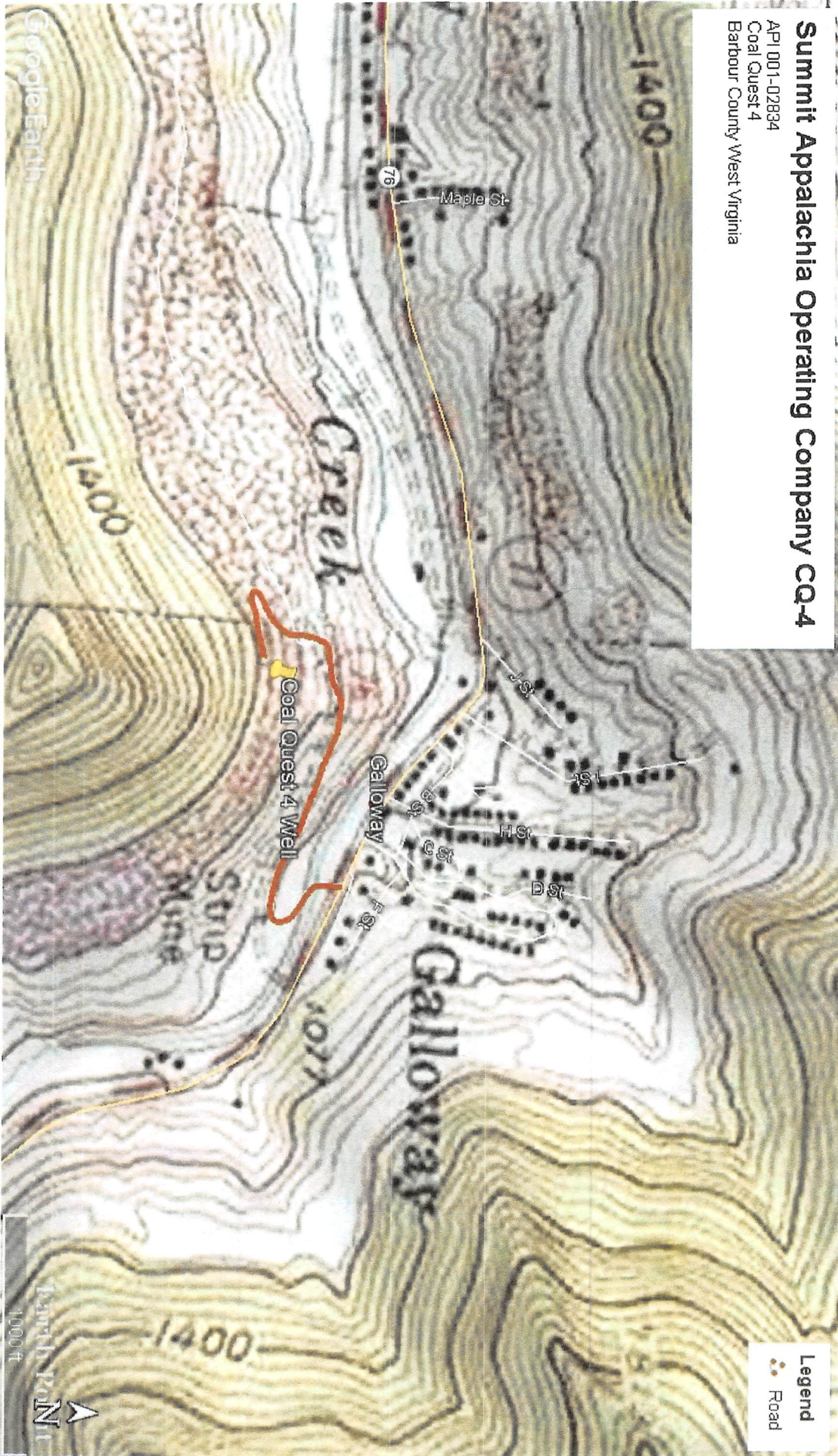


2708 Cranberry Square
 Suite 1
 Morgantown, WV 26508

Coalquest #4A-CBM-WV-001
 Coalquest #4-CBM-WV-001
 Coalquest #7-CBM-WV-001

Office of Chief
 SEP 11 2006
 WV Department of
 Environmental Protection

Summit Appalachia Operating Company CA-4
API 001-02834
Coal Quest 4
Barbour County West Virginia



RECEIVED
Office of Oil and Gas
MAY 13 2020
WV Department of
Environmental Protection