

WW-7
8-30-06



West Virginia Department of Environmental Protection
Office of Oil and Gas
WELL LOCATION FORM: GPS

API: 47-005-00069 WELL NO.: 35
FARM NAME: LaFollette
RESPONSIBLE PARTY NAME: Gary E. Acord
COUNTY: Boone DISTRICT: Sherman
QUADRANGLE: Sylvester
SURFACE OWNER: LaFollette
ROYALTY OWNER: LaFollette
UTM GPS NORTHING: 4215401.79 meters (NAD-83)
UTM GPS EASTING: 450493.39 meters (NAD-83) GPS ELEVATION: 454.7 m.

The Responsible Party named above has chosen to submit GPS coordinates in lieu of preparing a new well location plat for a plugging permit or assigned API number on the above well. The Office of Oil and Gas will not accept GPS coordinates that do not meet the following requirements:

1. Datum: NAD 1983, Zone: 17 North, Coordinate Units: meters, Altitude: height above mean sea level (MSL) – meters.

2. Accuracy to Datum – 3.05 meters

3. Data Collection Method:

Survey grade GPS ___: Post Processed Differential ___
Real-Time Differential ___

Mapping Grade GPS X: Post Processed Differential ___
Real-Time Differential ___

RECEIVED
Office of Oil and Gas

DEC 11 2018

WV Department of
Environmental Protection

4. Letter size copy of the topography map showing the well location.

I the undersigned, hereby certify this data is correct to the best of my knowledge and belief and shows all the information required by law and the regulations issued and prescribed by the Office of Oil and Gas.

Gary E. Acord
Signature

AGENT - ENGINEER
Title

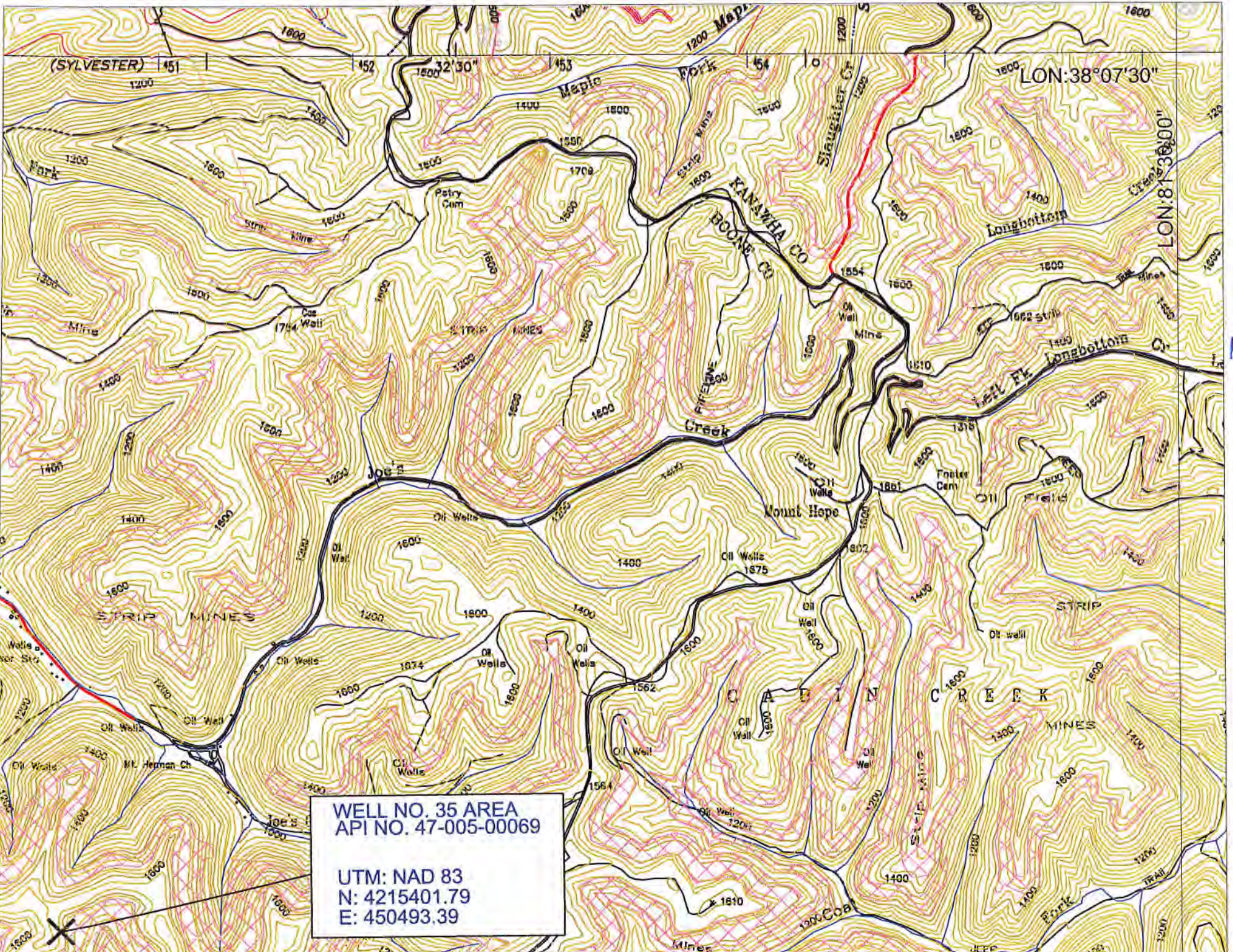
11-19-18
Date



PANTHER CREEK MINING, LLC.
 AMERICAN EAGLE MINE
 Well No. 35
 API No. 47-005-00069
 Scale: 1" = 2000'

RECEIVED
 Office of Oil and Gas
 DEC 11 2018
 U.S. Department of
 Environmental Protection

SLYVESTER QUADRANGLE
 WEST VIRGINIA - BOONE CO.
 7.5 MINUTE SERIES (TOPOGRAPHIC)



7

47-005-00069P