

New Location...
 Drill Deeper.....
 Abandonment.....

1.51 S.
 4.13 W.
 4NW (K-5)

Company THE OWENS LIBBEY-OWENS GAS DEPT.
 Address BOX 2111 CHARLESTON, W. VA.
 Farm COAL RIVER MINING CO. "A"
 Tract _____ Acres 6500 Lease No. 55
 Well (Farm) No. 37 Serial No. 656
 Elevation (Spirit Level) 782.3
 Quadrangle PEYTONA - WC
 County BOONE District PEYTONA
 Engineer T. S. FLOURNOY
 Engineer's Registration No. 269
 File No. _____ Drawing No. _____
 Date FEB. 22 1943 Scale 1 INCH = 1000 FT.

STATE OF WEST VIRGINIA
 DEPARTMENT OF MINES
 OIL AND GAS DIVISION
 CHARLESTON

WELL LOCATION MAP
 FILE NO. 300-575

+ Denotes location of well on United States Topographic Maps, scale 1 to 62,500, latitude and longitude lines being represented by border lines as shown.
 - Denotes one inch spaces on border line of original tracing.

6-0-237

WEST VIRGINIA DEPARTMENT OF MINES
OIL & GAS DIVISION
WELL RECORD

See sample studies

Permit No. Boo 575
Peytona Quad.
Company
Address
Farm
Location
Well No
Surface
Mineral

Dry Hole
CASING & TUBING

The Owens, Libbey-Owens Gas Dept.
P.O. Box 2111, Charleston 28, W.Va. Cond. 23'
Coal River Mining "A" Acres 6500 10 163
Branch Brush Creek 8 1/2 1097
656 Elev. 782' 6 5/8 4197
Mrs. Myrtle Vineyard, St. Albans, W.Va. 5 3/16 4996
Coal River Mining Co., c/o J.V.R. Skinner,
St. Albans, W.Va. Coal at 242' 24"; 508'
60"

Commenced April 7, 1943
Completed Oct. 15, 1943
Volume Dry Hole
Fresh Water 242' 1 bail pr. hr.;
Salt Water 355' H.F.; 5040'

Peytona district

Stratigraphic Unit	Thickness	Depth	Stratigraphic Unit	Thickness	Depth
Clay & Sand	Dk S	0 20	Slate & Shells	Dk M	3434 3462
Slate, Shells	Dk S&M	20 49	Slate	Lt S	3462 3491
Sand, Slate	Lt&Dk H&S	49 242	Slate & Shells	Lt S	3491 3564
Coal Bk	S	242 244	Slate	Lt S	3564 3890
Sand, Slate	Lt & Dk S&H	244 508	Shale - X	Dk S	3890 4176
Coal Bk	S	508 513	Corniferous	Gr H	4176 4265
Slate&Shells Dk	S	513 543	Corniferous	Dk H	4265 4275
Sand Lt	H	543 562	Corniferous	Gr H	4275 4289
Slate Dk	S	562 579	Corniferous	Dk H	4289 4312
Sand Wh	M	579 611	Corniferous	Lt H	4312 4388
Slate Dk	S	611 617	Corniferous	Dk H	4398 4823
Salt Sand Wh	H	617 746	Lime Gritty	Dk H	4823 4850
Slate Lt	S	746 747	Lime	Dk H	4850 4858
Sand Wh	H	747 766	Lime Gritty	Dk H	4858 4868
Slate Wh	S	766 772	Lime	Dk H	4868 5081
Sand Wh	H	772 890	Lime Gritty	Dk H	5081 5084
Slate Dk	S	890 897	Lime	Dk H	5084 5130
Red Rock	S	897 902	Red Rock - Rose Hill	S	5130 5147
Sand Shells Lt	H	902 917	Lime	Dk H	5147 5164
Slate & Shells Dk	S	917 946	Slate & Shells	Dk S	5164 5191
Red Rock	S	946 952	Red Rock	S	5191 5204
Shells Lt	H	952 970	Shells	R H	5204 5212
Slate & Shells Lt	H	970 980	Slate & Shells	R S	5212 5228
Maxon Sand Wh	H	980 1024	Slate & Shells	Dk S	5228 5253
Lime, Slate Dk&Lt	H&S	1024 1074	Slate & Shells	Lt S	5233 5329
Big Lime Lt	H	1074 1097	Red Rock	S	5329 5332
Big Lime Wh	H	1097 1126	Shell	Dk H	5332 5346
Big Lime Y	H	1126 1145	Slate & Shells	R M	5346 5365
Big Lime Wh	H	1145 1263	Red Rock	Dk M	5365 5370
Injun Sand R	H	1263 1293	Slate & Shells	Dk S	5370 5394
Slate, Shells, Lime Sh. Dk	S&H	1293 1504	Shell	Dk H	5394 5398
Slate Lt	S	1504 1548	Slate	Dk S	5398 5403
Sand Wh	H	1548 1572	Shell	Dk H	5403 5440
Slate & Shells	Lt S	1572 1583	Shell	Lt H	5440 5445
Slate & Shells Dk	S	1583 1739	Shell	Dk H	5445 5457
Brown Shale Br	S	1739 1751	Slate	Dk S	5457 5466
Berea Sand Lt	H	1751 1763	Shell	Dk H	5466 5477
Slate Dk	S	1763 1767	Slate	Dk S	5477 5484
Shell, Slate Lt	H	1767 1859	Sand Tuscarora	Gr H	5484 5548
Slate & Shells Dk	H	1859 1871	Slate	Gr S	5548 5588
Slate, & Shells Lt	H	1871 1917	Sand Tuscarora	Wh H	5588 5598
Slate & Shells Dk	H	1917 1947	Slate Juniata	R S	5598 5600
Slate & Shells Lt	S	1947 1985	TOTAL DEPTH		5600
Shell Wh	H	1985 2000			
Slate & Shells Dk&Lt	H&S	2000 2948	Gas 1194' 58 M		
Shale Br	S	2948 2963	Gas 1206' 74 M		
Slate & Shells Lt	M	2963 3021	Gas test 1751' --42 M		
Shells Dk	H	3021 3026	Gas 1758' 47 M		
Shells Lt	H	3026 3109			
Slate & Shells Lt & Dk	M	3109 3219			
Shale - AA Br	S	3219 3229			
Shell Dk	H	3229 3239			
Slate Dk	S	3239 3288			
Slate & Shells Dk	S	3298 3318			
Shale Br	S	3318 3434			

OK. 4248-53

*4822-33
4248-53
Newburg*

*5130-5138
5147-5164
5191-5204
5212-5228
5253-5260
5374*

Rose Hill

615

*4248
782
3466*

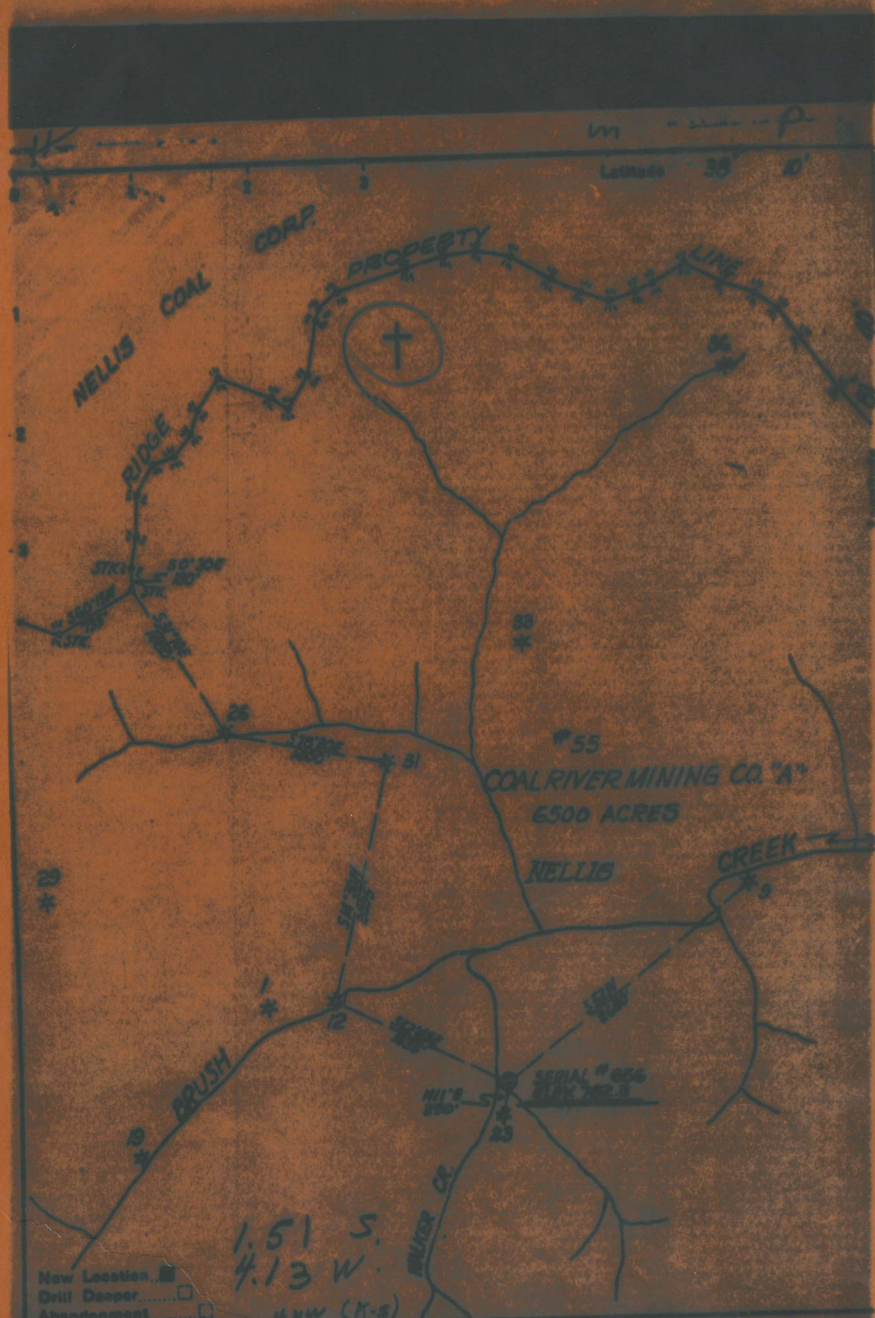
*4822
4248
574*

*4822
782
4040*

*5598
5484
114*

*5484
782
4702*

*4248
782
3394*



Company THE OHENS LIMBER-OHENS GAS DEPT.
 Address BOX 211 CHARLESTON W.VA.
 Form COAL RIVER MINING CO. "A"
 Tract Acres 6500 Lease No. 55
 Well (Farm) No. 57 Serial No. 656
 Elevation (Spirit Level) 782.3
 Quadrangle BEYTONA - WC
 County BOONE District BEYTONA
 Engineer T.S. FLOURNOY
 Engineer's Registration No. 265
 File No. _____ Drawing No. _____
 Date FEB. 22 1943 Scale 1 INCH = 1000 FT.

STATE OF WEST VIRGINIA
 DEPARTMENT OF MINES
 OIL AND GAS DIVISION
 CHARLESTON
WELL LOCATION MAP
 FILE NO. 200-575
 * Denotes location of well on United States Topographic Maps, scale 1 to 62,500, latitude and longitude lines being represented by border lines on sheets.
 - Denotes one inch spaces on border line of original tracing.

7.50615 topo loc
 38°10'00" 1.45S
 81°42'30" 1.95W
 15 loc (calc)
 38°10' 1.45S
 81°40' 4.22W

WEST VIRGINIA DEPARTMENT OF MINES
OIL & GAS DIVISION
WELL RECORD

Permit No. 200 375
Paytona Quad.
Company
Address
Farm
Location
Well No.
Surface
Mineral
Commenced
Completed
Volume
Fresh Water
Salt Water

Dry Hole
CASING & TUBING

The Owens, Libbey-Owens Gas Dept.
P.O. Box 2111, Charleston 26, W.Va. Cond. 23'
Coal River Mining "A" Acres 6500 10 188
Branch Brush Creek 21 1097
856 Elev. 782'
Mrs. Myrtle Vineyard, St. Albans, W.Va. 5 3/16 4242
Coal River Mining Co., c/o J.V.R. Skinner,
St. Albans, W.Va. Coal at 342' 24"; 508
60"
April 7, 1948
Oct. 15, 1948
Dry Hole
243' 1 ball W. Nr.;
353' N.P.; 5040'

Clay & Sand	Dk	S	0	30	Slate & Shells	Dk	N	3436	3468
Slate, Shells	Dk	SM	30	49	Slate	Lt	S	3468	3491
Sand, Slate	Lt&Dk	MS	49	247	Slate & Shells	Lt	S	3491	3504
Coal	Dk	S	247	247	Slate	Lt	S	3504	3507
Sand, Slate	Lt & Dk	SM	247	247	Shale	Dk	S	3507	3517
Shells	Dk	S	308	318	Corniferous	Dr	H	3517	3521
Slate&Shells	Dk	S	313	343	Corniferous	Dk	H	3521	3525
Sand	Lt	H	343	352	Corniferous	Dr	H	3525	3529
Slate	Dk	S	352	379	Corniferous	Dk	H	3529	3533
Sand	Wh	M	379	611	Corniferous	Lt	H	3533	3537
Slate	Dk	S	611	617	Corniferous	Dk	H	3537	3541
Salt Sand	Wh	H	617	746	Lime Gritty	Dk	H	3541	3545
Slate	Lt	S	746	747	Lime	Dk	H	3545	3549
Sand	Wh	H	747	766	Lime Gritty	Dk	H	3549	3553
Slate	Wh	S	766	772	Lime	Dk	H	3553	3557
Sand	Wh	H	772	890	Lime Gritty	Dk	H	3557	3561
Slate	Dk	S	890	897	Lime	Dk	H	3561	3565
Red Rock	S	S	897	902	Red Rock - (Sandy)	Dk	S	3565	3569
Sand Shells	Lt	H	902	917	Lime	Dk	H	3569	3573
Slate & Shells	Dk	S	917	946	Slate & Shells	Dk	S	3573	3577
Red Rock	S	S	946	952	Red Rock	Dk	S	3577	3581
Shells	Lt	H	952	970	Shells	Dk	H	3581	3585
Slate & Shells	Lt	H	970	980	Slate & Shells	Dk	S	3585	3589
Mass Sand	Wh	H	980	1024	Slate & Shells	Lt	S	3589	3593
Lime, Slate Dk&Lt	H&S	H	1024	1074	Slate & Shells	Lt	S	3593	3597
Big Lime	Lt	H	1074	1097	Red Rock	Dk	S	3597	3601
Big Lime	Wh	H	1097	1126	Shells	Dk	H	3601	3605
Big Lime	Y	H	1126	1145	Slate & Shells	Dk	M	3605	3609
Big Lime	Wh	H	1145	1262	Red Rock	Dk	M	3609	3613
Injun Sand	R	H	1262	1293	Slate & Shells	Dk	S	3613	3617
Slate, Shells, Lime	Sh, Dk	SM	1293	1306	Shells	Dk	H	3617	3621
Slate	Lt	S	1306	1348	Slate	Dk	S	3621	3625
Sand	Wh	H	1348	1373	Shells	Dk	S	3625	3629
Slate & Shells	Lt & S	S	1373	1503	Shells	Lt	H	3629	3633
Slate & Shells	Dk	S	1503	1726	Shells	Dk	H	3633	3637
Brown Shale	Dr	S	1726	1751	Slate	Dk	S	3637	3641
Berea Sand	Lt	H	1751	1762	Shells	Dk	S	3641	3645
Slate	Dk	S	1762	1767	Slate	Dk	S	3645	3649
Shell, Slate	Lt	H	1767	1839	Sand Tuscarora	Dr	H	3649	3653
Slate & Shells	Dk	H	1839	1871	Slate	Dr	S	3653	3657
Slate, & Shells	Lt	H	1871	1917	Sand Tuscarora	Wh	H	3657	3661
Slate & Shells	Dk	H	1917	1947	Slate Tuscarora	R	S	3661	3665
Slate & Shells	Lt	S	1947	1985	TOTAL DEPTH			3665	3669
Shell	Wh	H	1985	2000					
Slate & Shells	Dk&Lt	H&S	2000	2000	Gas 1194' 20 M'				
Shale	Dr	S	2000	2000	Gas 1200' 24 M'				
Slate & Shells	Lt	M	2000	2001	Gas 1201' 24 M'				
Shells	Dk	H	2001	2026	Gas 1202' 24 M'				
Shells	Lt	H	2026	2100	Gas 1203' 27 M'				
Slate & Shells	Lt & Dk	M	2100	2219					
Shale	Dr	S	2219	2229					
Shell	Dk	H	2229	2229					
Slate	Dk	S	2229	2229					
Slate & Shells	Dk	S	2229	2229					
Shale	Dr	S	2229	2424					

4622
782
4702
5484
782
4702
4176
782
3394