

WW-7
8-30-06



West Virginia Department of Environmental Protection
Office of Oil and Gas
WELL LOCATION FORM: GPS

API: 47-005-01604 WELL NO.: Broun 2
FARM NAME: Broun
RESPONSIBLE PARTY NAME: Gary E. Acord
COUNTY: Boone DISTRICT: Sherman
QUADRANGLE: Sylvester
SURFACE OWNER: Broun
ROYALTY OWNER: Broun
UTM GPS NORTHING: 4216475.7 meters (NAD-83) (1077')
UTM GPS EASTING: 450470.26 meters (NAD-83) GPS ELEVATION: 328.3 m.

The Responsible Party named above has chosen to submit GPS coordinates in lieu of preparing a new well location plat for a plugging permit or assigned API number on the above well. The Office of Oil and Gas will not accept GPS coordinates that do not meet the following requirements:

1. Datum: NAD 1983, Zone: 17 North, Coordinate Units: meters, Altitude: height above mean sea level (MSL) – meters.
2. Accuracy to Datum – 3.05 meters
3. Data Collection Method:
Survey grade GPS ___: Post Processed Differential ___
Real-Time Differential ___
Mapping Grade GPS X: Post Processed Differential ___
Real-Time Differential ___

RECEIVED
Office of Oil and Gas
APR 2 2019

WV Department of
Environmental Protection

4. Letter size copy of the topography map showing the well location.

I the undersigned, hereby certify this data is correct to the best of my knowledge and belief and shows all the information required by law and the regulations issued and prescribed by the Office of Oil and Gas.

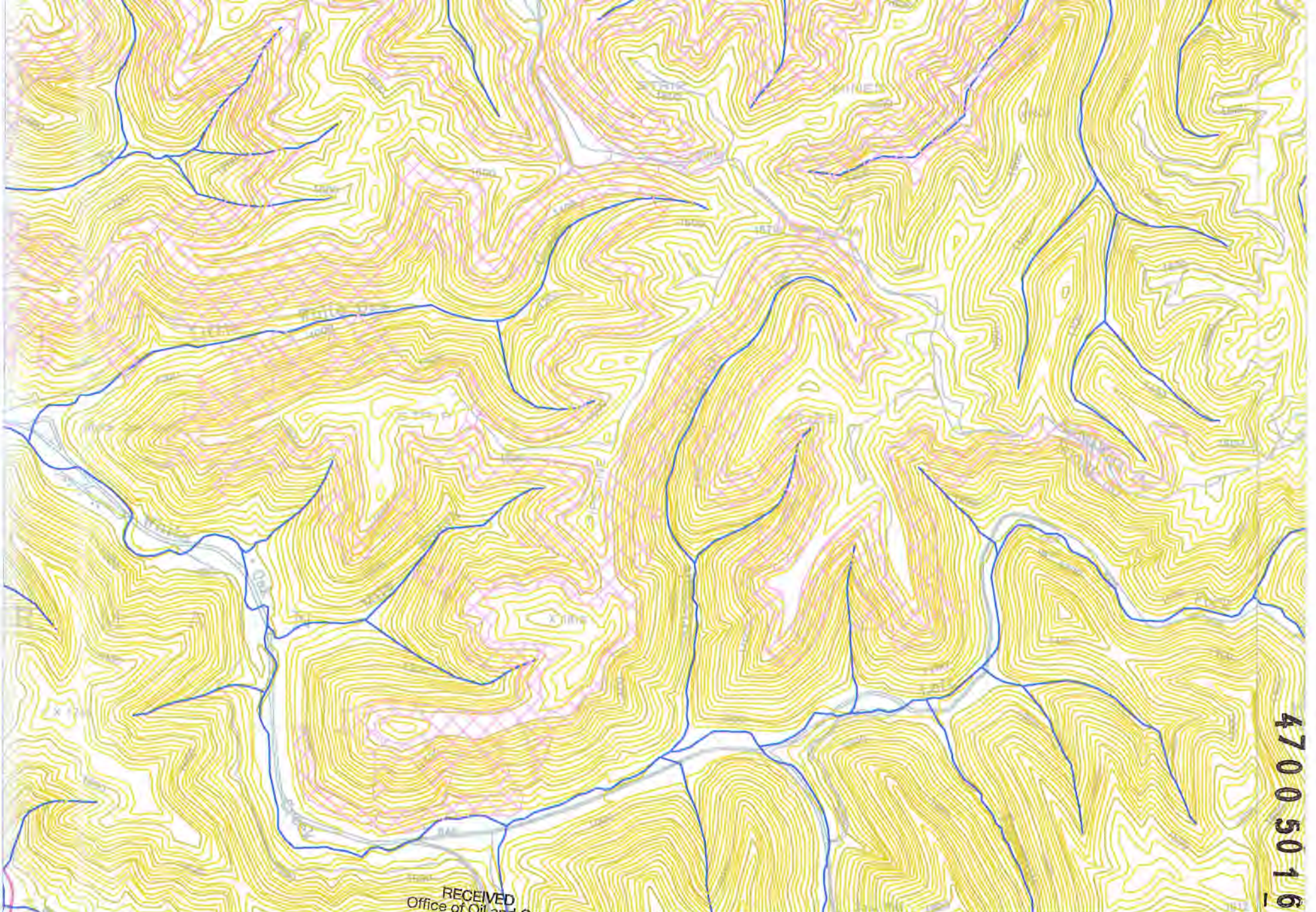
Gary E. Acord Signature ENGINEER/AGENT Title 3-28-2019 Date

A topographic map showing contour lines in yellow and pink, with blue lines representing water features. A white rectangular label is centered on the map, containing well and API numbers and UTM coordinates. The map is oriented vertically.

WELL NO. Broun 2 AREA
API NO. 47-005-01604

UTM: NAD 83
N: 4216475.7
E: 450470.2

4700501604R



4700501604

RECEIVED
Office of Oil and Gas

APR 2 2019

WV Department of
Environmental Protection

PANTHER CREEK MINING, LLC
AMERICAN EAGLE MINE
APR No. 18-002-01804
Scale 1" = 2000'

SLYVSTER QUADRANGLE
WEST VIRGINIA - HOONE CO.
5 MINUTE SERIES (TOPOGRAPHIC)