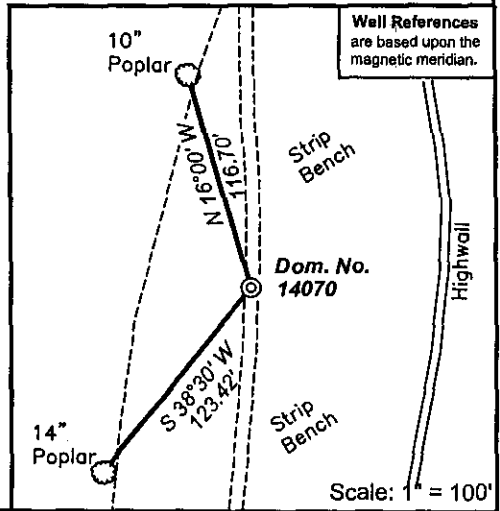


**Notes:**  
Well site coordinates are  
N: 310,309 Lat: 37-51-01.5  
E: 1,812,895 Long: 81-38-52.9

West Virginia Coordinate System of 1927 (South Zone) based upon Differential GPS Measurements.  
Plat orientation, corner and well ties are based upon the grid north meridian.  
Well location references are based upon the magnetic meridian.

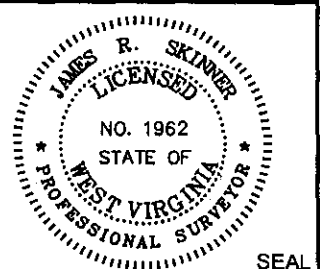


(-o-) Denotes Location of Well on United States Topographic Maps



I, the undersigned, hereby certify that this plat is correct to the best of my knowledge and belief and shows all the information required by law and the regulations issued and prescribed by the Department of Mines.

*James R. Skinner*  
P.S. 1962



FILE NO: W-139-16-CR-04  
DRAWING NO: W13916cr04\_14070.dwg  
SCALE: 1" = 1000'  
MINIMUM DEGREE OF ACCURACY: 1:200  
PROVEN SOURCE OF ELEVATION: Bench Mark Elevation 1106'



STATE OF WEST VIRGINIA  
DEPARTMENT OF MINES  
OIL AND GAS DIVISION

DATE: October 20, 20 04  
OPERATOR'S WELL NO. 14070  
API WELL NO  
47 - 005 - 01963  
STATE COUNTY PERMIT

WELL TYPE:  OIL  GAS  LIQUID INJECTION  WASTE DISPOSAL  
(IF GAS) PRODUCTION:  STORAGE  DEEP  SHALLOW

LOCATION: ELEVATION: 1674' WATERSHED Jasper Workman Branch QUADRANGLE: Lorado 7.5'  
DISTRICT: Crook COUNTY: Boone

SURFACE OWNER: Bank One Trustee for David D. Shepard Trust ACREAGE: 18,779.52  
OIL AND GAS ROYALTY OWNER: Bank One Trustee for David D. Shepard Trust LEASE NO: 80210 ACREAGE: 23,649.70

PROPOSED WORK:  DRILL  CONVERT  DRILL DEEPER  FRACTURE OR STIMULATE  PLUG OFF OLD FORMATION  
 PERFORATE NEW FORMATION  OTHER PHYSICAL CHANGE IN WELL (SPECIFY)  
 PLUG AND ABANDON  CLEAN OUT AND REPLUG TARGET FORMATION: Devonian - Shale ESTIMATED DEPTH: 4940'

WELL OPERATOR: Dominion Exploration & Production, Inc. DESIGNATED AGENT: Rodney Biggs  
ADDRESS: One Dominion Drive, P.O. Box 1248 Jane Lew, WV 26378 ADDRESS: One Dominion Drive, P.O. Box 1248 Jane Lew, WV 26378

800 1963

State of West Virginia  
Department of Environmental Protection  
Office of Oil and Gas

*MB*

Well Operator's Report of Well Work

Farm name: Bank One Trustee Operator Well No.: 14070

LOCATION: Elevation: 1674' Quadrangle: Lorado 7.5'

District: Crook County: Boone  
Latitude: 8,940 Feet South of 37 Deg. 52 Min. 30 Sec.  
Longitude 6,680' Feet West of 81 Deg. 37 Min. 30 Sec.

Company: Dominion Exploration & Production, Inc

	Casing & Tubing	Used in drilling	Left in well	Cement fill up Cu. Ft.
Address: P O Box 1248 Jane Lew, WV 26378				
Agent: Rodney J. Biggs				
Inspector: Carlos Hively				
Date Permit Issued: 12/10/2004				
Date Well Work Commenced: 01/07/2005	12 3/4"	21'	21'	Sand In
Date Well Work Completed: 01/19/2005				
Verbal Plugging N/A	9 5/8"	220'	220'	115 sks
Date Permission granted on: N/A				
Rotary X Cable Rig	7"	2035'	2035'	120 sks
Total Depth (feet): 4940'				
Fresh Water Depth (ft.): N/A	4 1/2"	4908'	4908'	140 sks
Salt Water Depth (ft.): N/A				
Is coal being mined in area (N/Y)? N				
Coal Depths (ft.): 160-162'				

185  
120  
305

OPEN FLOW DATA

Producing formation Lower Upper Huron Pay zone depth (ft) 4767-4775'  
Big Lime Pay zone depth (ft) 3034-3120'  
Gas: Initial open flow 15 MCF/d Oil: Initial open flow 0 Bbl/d  
Final open flow 404 MCF/d Final open flow 0 Bbl/d  
Time of open flow between initial and final tests 12 Hours  
Static rock Pressure 640 psig (surface pressure) after 12 Hours

\*Commingled

Second producing formation \_\_\_\_\_ Pay zone depth (ft) \_\_\_\_\_  
Gas: Initial open flow \_\_\_\_\_ MCF/d Oil: Initial open flow \_\_\_\_\_ Bbl/d  
Final open flow \_\_\_\_\_ MCF/d Final open flow \_\_\_\_\_ Bbl/d  
Time of open flow between initial and final tests \_\_\_\_\_ Hours  
Static rock Pressure \_\_\_\_\_ psig (surface pressure) after \_\_\_\_\_ Hours

NOTE: ON BACK OF THIS FORM PUT THE FOLLOWING: 1). DETAILS OF PERFORATED INTERVALS, FRACTURING OR STIMULATING, PHYSICAL CHANGE, ETC. 2). THE WELL LOG WHICH IS A SYSTEMATIC DETAILED GEOLOGICAL RECORD OF ALL FORMATIONS, INCLUDING COAL ENCOUNTERED BY THE WELLBORE.

Signed: \_\_\_\_\_  
By: Rodney J. Biggs  
Date: 3/14/05

*NR*

Boone 1963

MAY 27 2005

