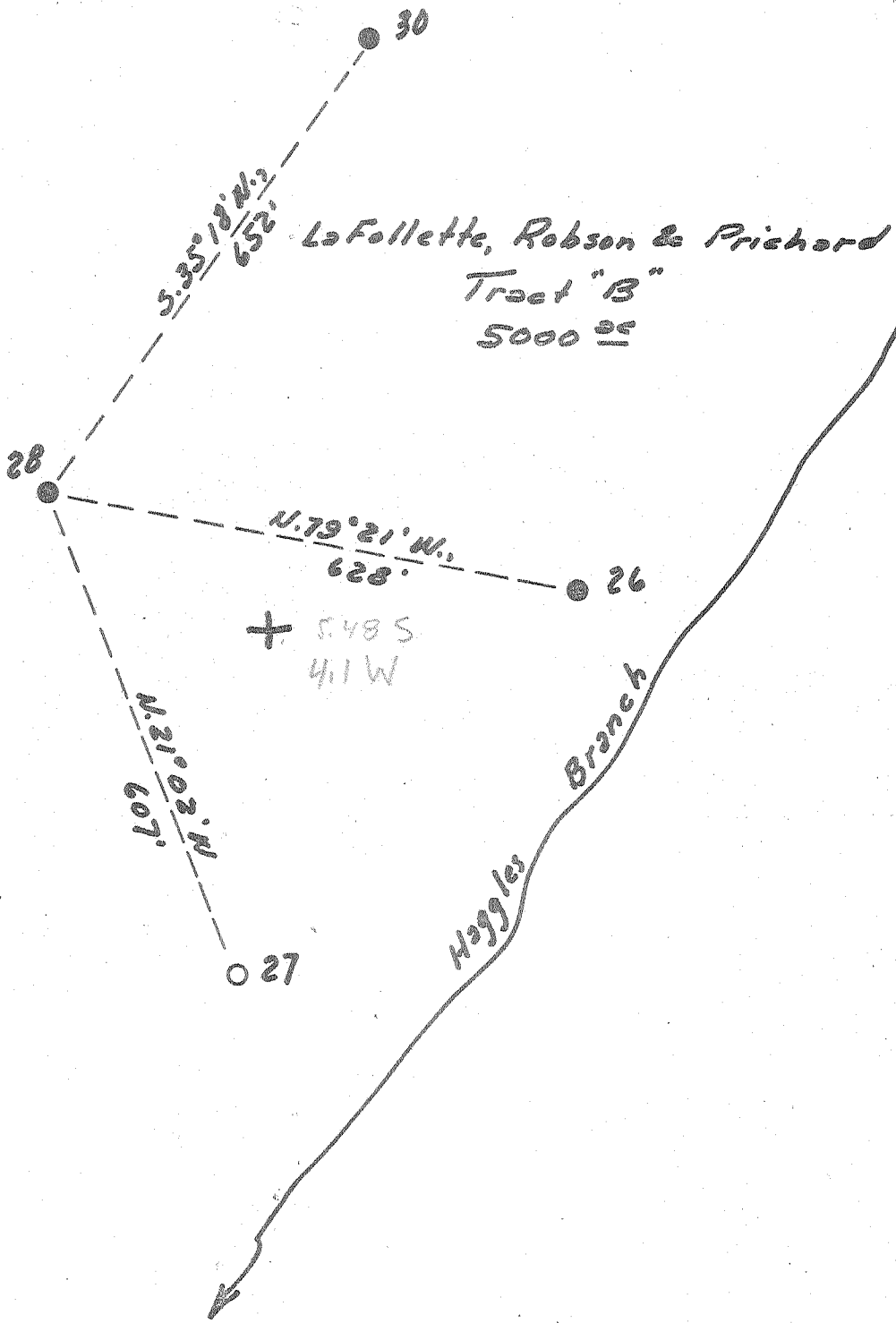


1 2 3

Latitude 38° 10'

Longitude 81° 30'



New Location   
 Drill Deeper   
 Abandonment

Company Pure Oil Co.  
 Address Newark, Ohio  
 Farm L. R. & P.  
 Tract "B" Acres 5000 Lease No. 224-220  
 Well (Farm) No. 28 Serial No. 515  
 Elevation (Spirit Level) 1477.8  
 Quadrangle Peyton  
 County Boone District Sherman  
 Engineer J.B. Hunter  
 Engineer's Registration No. Ohio 2912  
 File No. \_\_\_\_\_ Drawing No. \_\_\_\_\_  
 Date 5/30/57 Scale 1" = 200'

STATE OF WEST VIRGINIA  
 DEPARTMENT OF MINES  
 OIL AND GAS DIVISION  
 CHARLESTON

WELL LOCATION MAP

FILE NO. B00-324-A

Now 5-2228

+ Denotes location of well on United States Topographic Maps, scale 1 to 62,500, latitude and longitude lines being represented by border lines as shown.

- Denotes one inch spaces on border line of original tracing.



720

STATE OF WEST VIRGINIA  
DEPARTMENT OF MINES  
OIL AND GAS DIVISION

WELL RECORD

Oil or Gas Well Oil  
(KIND)

Quadrangle Payton  
Permit No. 3181

Company The Pure Oil Company  
Address P.O. Box 551 Newark, Ohio  
Farm LaFollette, Robson & Prichard Acres 5,000  
Location (waters) Joes Creek  
Well No. 28 Elev. 1477.8  
District Sherman County Boone  
The surface of tract is owned in fee by LaFollette, Robson and Prichard  
Mineral rights are owned by Same  
Drilling commenced June 15, 1928  
Drilling completed September 5, 1928  
Date Shot 9-6-28 From 3158 To 3181'6"  
With 80 qts.  
Open Flow /10ths Water in \_\_\_\_\_ Inch  
/10ths Merc. in \_\_\_\_\_ Inch  
Volume \_\_\_\_\_ Cu. Ft.  
Rock Pressure \_\_\_\_\_ lbs. \_\_\_\_\_ hrs.  
Oil 17 bbls., 1st 24 hrs.  
WELL ACIDIZED \_\_\_\_\_  
WELL FRACTURED \_\_\_\_\_

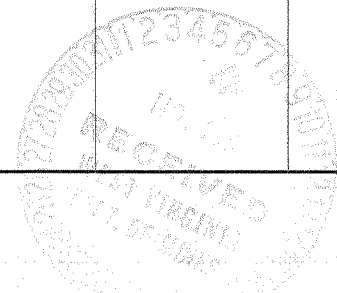
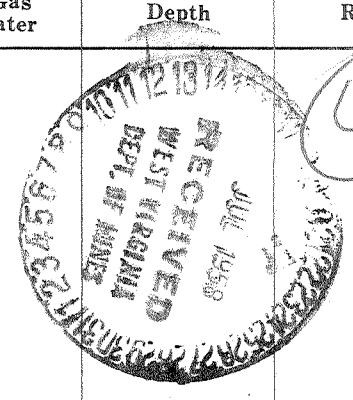
Casing and Tubing	Used in Drilling	Left in Well	Packers
Size			Kind of Packer
16"			
13"			
10"	951'	951'	Size of
8 1/2"	1972'	1972'	
6 5/8"	2496'	2496'	Depth set
5 3/16"			
3"			Perf. top
2"		3174'	Perf. bottom
Liners Used			Perf. top
			Perf. bottom

CASING CEMENTED \_\_\_\_\_ SIZE \_\_\_\_\_ No. Ft. \_\_\_\_\_ Date \_\_\_\_\_

COAL WAS ENCOUNTERED AT	FEET	INCHES
195	96	INCHES
360	36	INCHES
402	36	INCHES
430	48	INCHES
920	60	INCHES
943	24	INCHES

RESULT AFTER TREATMENT \_\_\_\_\_  
ROCK PRESSURE AFTER TREATMENT \_\_\_\_\_  
Fresh Water 920' Feet 1420' Salt Water 1634' Feet

Formation	Color	Hard or Soft	Top	Bottom	Oil, Gas or Water	Depth	Remarks
Sand			0	195			
Coal			195	203			
Sand			203	360			
Coal			360	363			
Slate			363	370			
Sand			370	402			
Coal			402	405			
Lime			405	430			
Coal			430	434			
Lime			434	550			
Sand			550	617			
Lime & shells			617	815			
Sand			815	920	Water	920'	2 blrs in 4 hrs.
Coal			920	925			
Sand			925	943			
Coal			943	945			
Lime shells			945	960			
Sand			960	990			
Slate & shells			990	1020			
Lime & shells			1020	1085			
Lime			1085	1100			
Sand			1100	1140			
Slate			1140	1237			
Sand			1237	1305			
Grampus			1305	1451	Water	1420'	2 blrs in 3 hrs.
Slate & shells			1451	1550			
Salt sand			1550	1950	Water	1634'	
Lime			1950	1970			
Slate			1970	2109			
Maxon sand			2109	2198			



Formation	Color	Hard or Soft	Top	Bottom	Oil, Gas or Water	Depth Found	Remarks
Red rock			2198	2238			
Lime shells			2238	2387			
Slate			2387	2392			
Lime			2392	2407			
Little lime			2407	2484			
Big lime			2484	2690			
Big injun			2690	2720			
Slate & shells			2720	2750			
Lime & shells			2750	2881			
Weir sand			2881	3000	Gas	2890-94	4.8 MCF
Lime			3000	3060			
Slate & shells			3060	3127			
Brown shale			3127	3135'6"			
Berea			3135'6"	3181'6"	Black oil	3152'	
					Green oil	3160-81½'	
					Gas	3165'	19.3 MCF
Slate			3181'6"	3182'6"			
TOTAL DEPTH				3182'6"			

Date March 11, 19 57

APPROVED THE PURE OIL COMPANY, Owner

By Guy J. Andersen  
(Title)  
Division Superintendent