



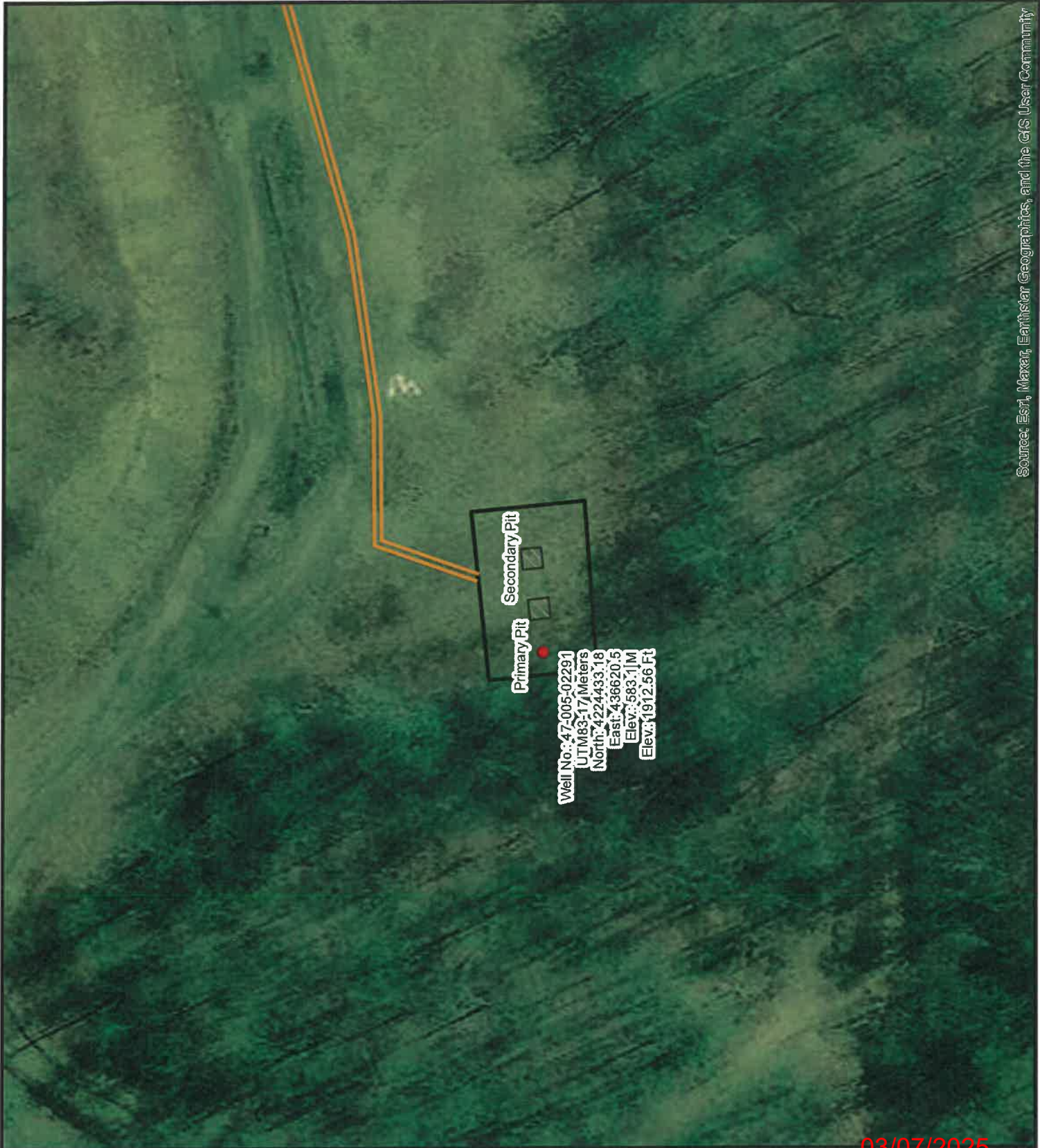
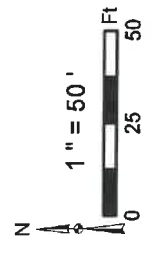
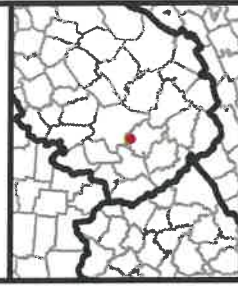
Diversified Gas & Oil Corporation  
100 Diversified Way  
Pikeville KY, 41051

47-005-02291  
Well Plugging Map

**Legend**

- Well
- Access Road
- ▨ Pits
- Pad
- Public Roads

RECEIVED  
Office of Oil and Gas  
JAN 31 2025  
WV Department of  
Environmental Protection



Primary Pit

Secondary Pit

Well No.: 47-005-02291  
 UTM 83: 17 Meters  
 North: 4224433.18  
 East: 436620.5  
 Elev.: 583.1 JM  
 Elev.: 1912.56 Ft

Source: Esri, Maxar, Earthstar Geographics, and the GIS User Community





Diversified Gas & Oil Corporation  
100 Diversified Way  
Pikeville KY, 41051

47-005-02291

Well Plugging Map

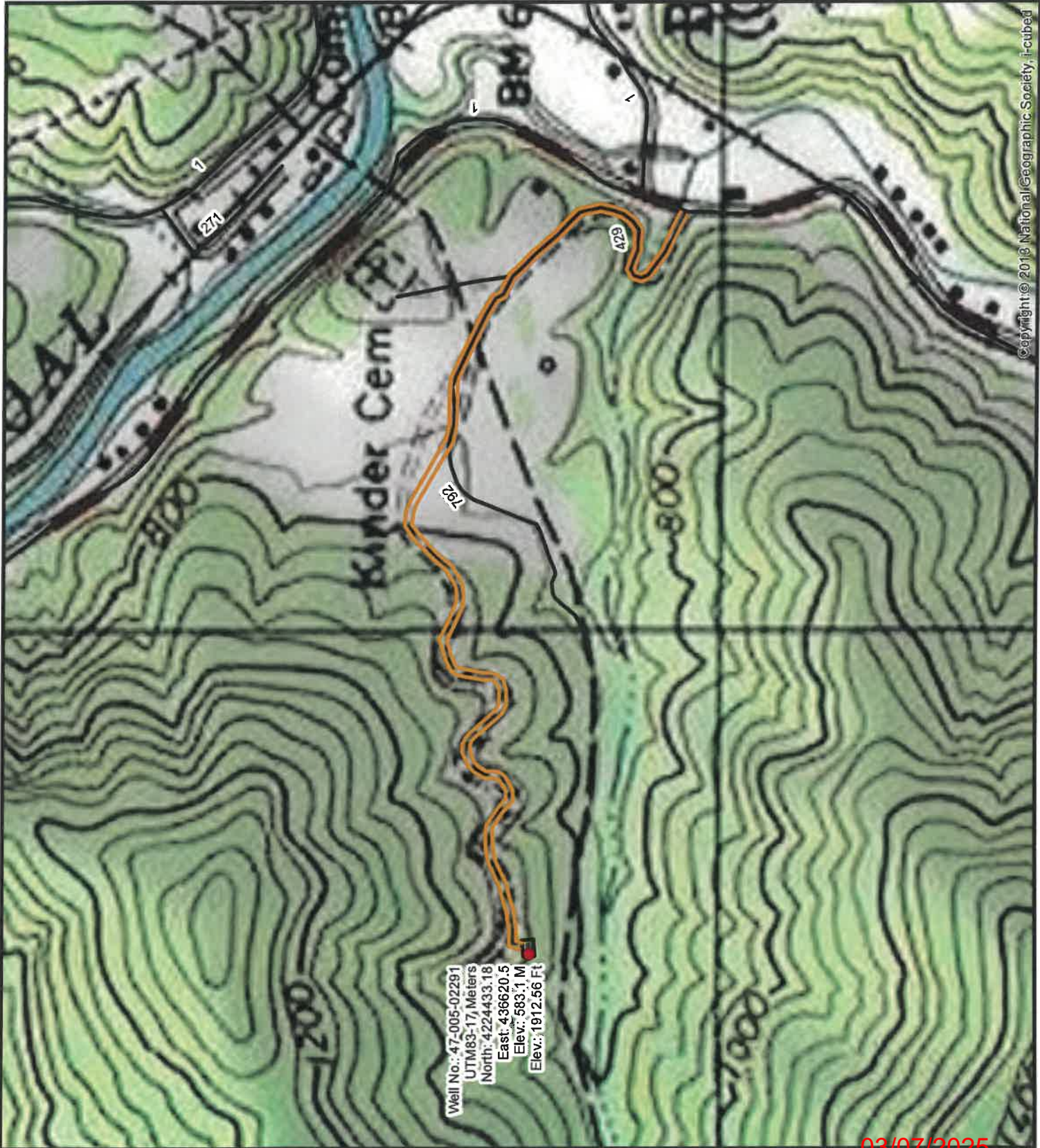
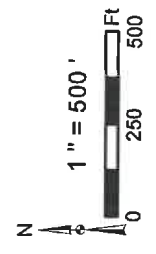
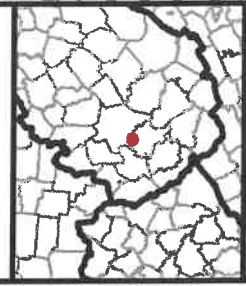
**Legend**

- Well
- Access Road
- ▨ Pits
- Pad
- Public Roads

RECEIVED  
Office of Oil and Gas

JAN 31 2025

WV Department of  
Environmental Protection



Well No.: 47-005-02291  
 UTM83-17 Meters  
 North: 4224433.18  
 East: 436620.5  
 Elev.: 583.1 M  
 Elev.: 1912.56 Ft

4700502291P

WW-7  
8-30-06



West Virginia Department of Environmental Protection  
Office of Oil and Gas  
**WELL LOCATION FORM: GPS**

API: 4700502291 WELL NO.: Robin Land 6H

FARM NAME: Robin Land

RESPONSIBLE PARTY NAME: Diversified Production, LLC

COUNTY: Boone DISTRICT: Peytona

QUADRANGLE: Racine 7.5'

SURFACE OWNER: ERP Environmental Fund, Inc. c/o Doss Engineering

ROYALTY OWNER: Heirs & Assigns of Tasa Coal Co.

UTM GPS NORTHING: 4224433.18

UTM GPS EASTING: 436620.5 GPS ELEVATION: 1912.56'

The Responsible Party named above has chosen to submit GPS coordinates in lieu of preparing a new well location plat for a plugging permit or assigned API number on the above well. The Office of Oil and Gas will not accept GPS coordinates that do not meet the following requirements:

- Datum: NAD 1983, Zone: 17 North, Coordinate Units: meters, Altitude: height above mean sea level (MSL) – meters.
- Accuracy to Datum – 3.05 meters
- Data Collection Method:

Survey grade GPS \_\_\_\_ : Post Processed Differential \_\_\_\_  
Real-Time Differential \_\_\_\_

Mapping Grade GPS X : Post Processed Differential X  
Real-Time Differential \_\_\_\_

RECEIVED  
Office of Oil and Gas

JAN 31 2025

WV Department of  
Environmental Protection

- Letter size copy of the topography map showing the well location.**

I the undersigned, hereby certify this data is correct to the best of my knowledge and belief and shows all the information required by law and the regulations issued and prescribed by the Office of Oil and Gas.

Signature

Chris Veazey - Director of Administration  
Title

01/23/2025  
Date

03/07/2025