

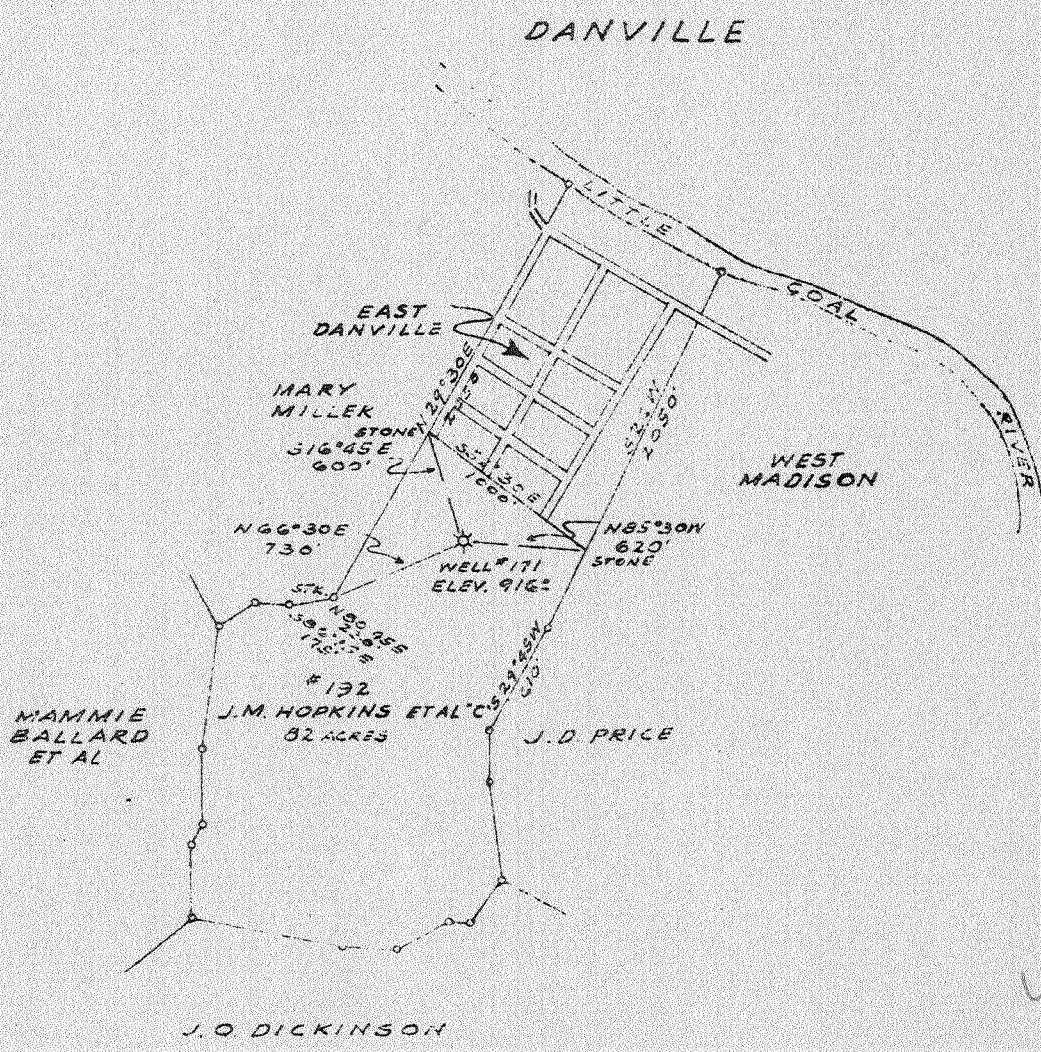
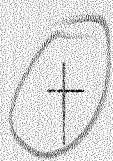
0 1 2 3 Latitude 38 05

1

2

3

Longitude 81 45



W - 4.45  
S - 1.

New Location  
Drill Deeper  
Abandonment X

Company THE OWENS, LIBBEY-OWENS GAS DEPT.  
 Address BOX 1375 CHARLESTON, W. VA.  
 Farm J.M. HOPKINS et al "C"  
 Tract \_\_\_\_\_ Acres 82 Lease No. 192  
 Well Farm No. 1 Serial No. 171  
 Elevation Spirit Level 9162  
 Quadrangle MADISON SE  
 County BOONE District SCOTT  
 Engineer T.S. Glanville  
 Engineer's Registration No. 269  
 File No. \_\_\_\_\_ Drawing No. \_\_\_\_\_  
 Date 12-4-39 Scale 1" = 1000'

STATE OF WEST VIRGINIA  
DEPARTMENT OF MINES  
OIL AND GAS DIVISION  
CHARLESTON

WELL LOCATION MAP  
FILE NO. B00-77A

+ Denotes location of well on United States Topographic Maps, scale 1 to 62,500, latitude and longitude lines being represented by border lines as shown

- Denotes one inch spaces on border line of original tracing.

441

WEST VIRGINIA DEPARTMENT OF MINES  
OIL AND GAS DIVISION

WELL RECORD

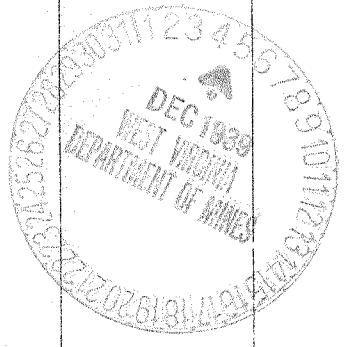
Permit No. Boo-77A Blugging Oil or Gas Well Gas Well  
(Kind)

Company The Owens, Libbey-Owens Gas Department  
Address P. O. Box 1375, Charleston, W. Va.  
Farm J. M. Hopkins et. al. "C" Acres 82  
Location (waters) Little Coal River  
Well No. 171 Elev. 916'  
District Scott County Boone  
The surface of tract is owned in fee by J.M.Hopkins et al  
c/o Bank of Danville Address Danville, W. Va.  
Mineral rights are owned by Same  
Address \_\_\_\_\_  
Drilling commenced 7-30-1924  
Drilling completed 9-13-1924  
Date shot 9-6-24 Depth of shot 1888-1902'  
Open Flow /10ths Water in \_\_\_\_\_ Inch  
/10ths Merc. in \_\_\_\_\_ Inch  
Volume 224,000 Cu. Ft.  
Rock Pressure 175 lbs. 24 hrs.  
Oil \_\_\_\_\_ bbls., 1st 24 hrs.  
Fresh water 160', 460' feet \_\_\_\_\_ feet  
Salt water 550' feet \_\_\_\_\_ feet

Casing and Tubing	Used in Drilling	Left in Well	Packers
Size			
16.			Kind of Packer
13.			<u>Anchor</u>
10.	<u>22'</u>	<u>22'</u>	Size of
8 1/4.	<u>535'</u>		<u>2" x 6 5/8"</u>
6 5/8.	<u>1181'</u>	<u>1181'</u>	Depth set <u>1221'</u>
5 3/16.			
3.	<u>510'</u>	<u>510'</u>	Perf. top
2.	<u>1419'</u>	<u>1419'</u>	Perf. bottom
Liners Used			Perf. top
			Perf. bottom

CASING CEMENTED \_\_\_\_\_ SIZE \_\_\_\_\_ No. FT. \_\_\_\_\_ Date \_\_\_\_\_  
COAL WAS ENCOUNTERED AT \_\_\_\_\_ FEET \_\_\_\_\_ INCHES  
\_\_\_\_\_ FEET \_\_\_\_\_ INCHES FEET \_\_\_\_\_ INCHES  
\_\_\_\_\_ FEET \_\_\_\_\_ INCHES FEET \_\_\_\_\_ INCHES

Formation	Color	Hard or Soft	Top	Bottom	Oil Gas or Water	Depth Found	Remarks
Surface			0	25			
Sand			25	95			
Slate			95	150			
Sand			150	160	Water	160 ft.	3 bailers
Slate			160	225			
Sand			225	250			
Slate			250	300			
Sand			300	460	Water	460 ft.	Hole full
Sandy Lime			460	525			
Slate			525	530			
Salt Sand			530	650	Salt Water	550 ft.	Hole full
Break			650	655			
Salt Sand			655	950			
Slate			950	975			
Maxton Sand			975	1050			
Slate			1050	1080			
Lime			1080	1100			
Sand			1100	1140			
Little Lime			1140	1175			
Pencil Cave			1175	1180			
Big Lime			1180	1405	Gas	1260'	
Big Injun			1405	1445	"	1370'	
Slate & Shells			1445	1840			
Lime Shells			1840	1850			
Slate			1850	1870			
Shale			1870	1880			
Berea Sand			1880	1905	Gas	1888'	400,000 CF
Lime			1905	1929			
Total depth			1905	1929			



By well





WEST VIRGINIA DEPARTMENT OF MINES

OIL & GAS DIVISION

WELL RECORD

Permit No. 300-77 (blasting)  
 - Quad.

Gas Well  
 CASING & TUBING

Company	Owens, Libbey-Owens Gas Dept.	10	22	22
Address	Box 1375, Charleston, W. Va.	8-1/4	535	
Form	J. M. Hopkins, et al "C" ACRES 82	6-5/8	1161	1181
Location	Little Coal River	3	510	510
Well No.	171 ELEV. 916	2	1419	1419
District	Scott - Boone County			
Surface & Mineral Address	J. M. Hopkins, et al 1/2 Bank of Danville, Danville, W. Va.		Prcker - Anchor	
Commenced	July 30, 1924		Size - 2x6-5/8	
Completed	Sept. 13, 1924		Depth set - 1231	
Date Shot	9/6/24 - Depth 1338-1902			
Volume	224,000 c.f.			
Rock Pressure	175 lbs. 24 hrs.			
Fresh water	150, 460			
Salt Water	550			

JAN 23 1940

Formation	Top	Base	Result
Surface	0	25	
Sand	25	95	
Slate	95	150	Water 160' 3 bailers
Sand	150	160	
Slate	160	225	
Sand	225	250	
Slate	250	300	
Sand	300	460	Water 460 hole full
Sandy Lime	450	525	
Slate	525	530	
Salt Sand	530	650	Salt Water 550 hole full
Break	650	655	
Salt Sand	655	950	
Slate	950	975	
Maxton Sand	975	1050	
Slate	1050	1030	
Lime	1080	1100	
Sand	1100	1140	
Little Lime	1140	1175	
Pencil Cove	1175	1180	
Big Lime	1180	1405	Gas 1260
Big Injun	1405	1445	" 1370
Slate & Shells	1445	1840	
Lime Shells	1840	1850	
Slate	1850	1870	
Shale	1870	1880	
Berea Sand	1880	1905	Gas 1838 400,000 c.f.
Lime	1905	1929	
Total Depth		1929	

DRY WELL

(Plot Service Data Jan. 1940)