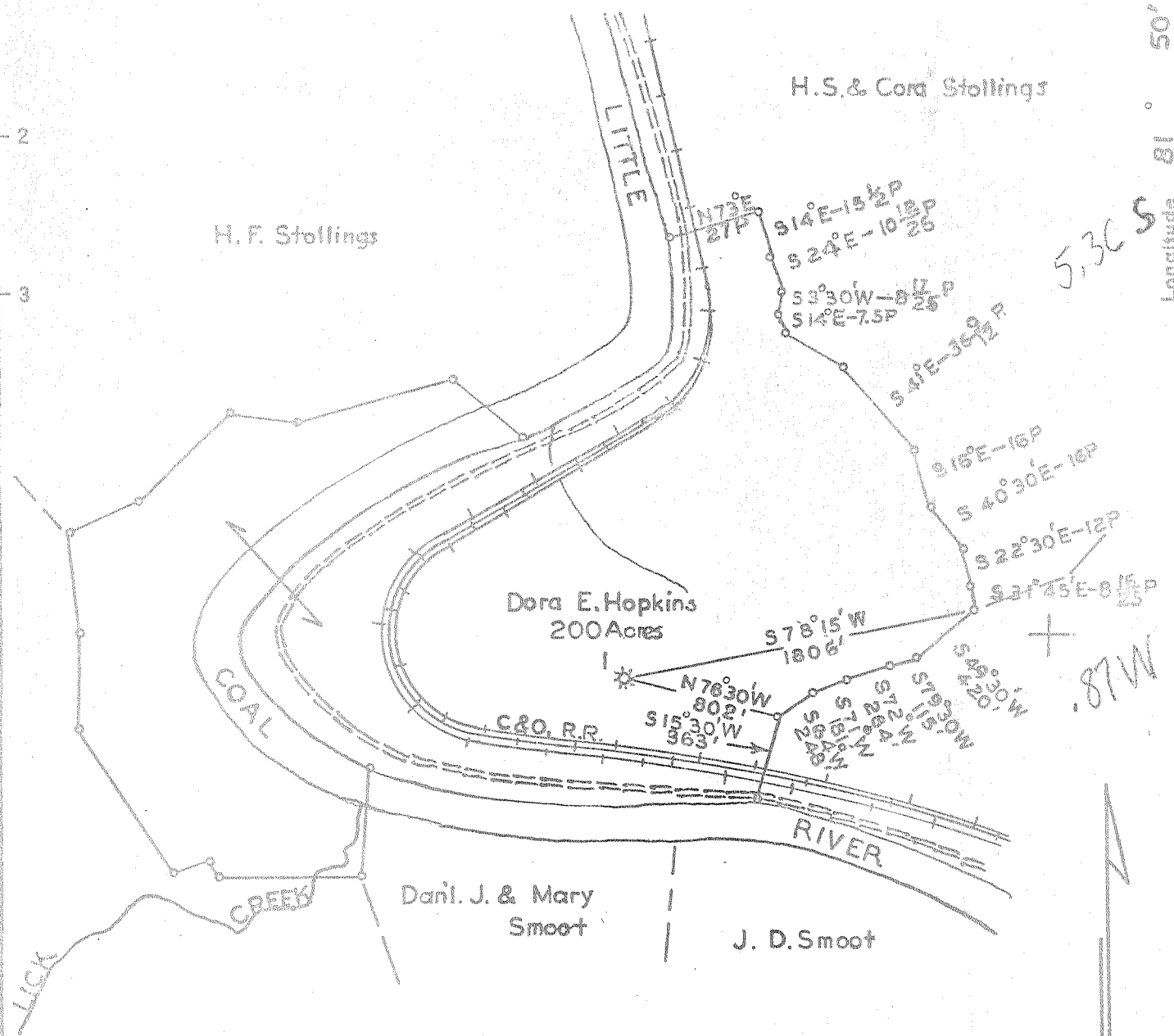


Latitude 36° 10'

Longitude 81° 50'



Coal: Allen & Pryor  
 % Coal Valley Land Co.  
 Union Trust Bldg. - Charleston, W. Va.  
 Surface: J. H. Hopkins  
 Danville, W. Va.

New Location   
 Drill Deeper   
 Abandonment

S92 W71

Company	South Penn Natural Gas Co.
Address	Parkersburg, West Virginia
Farm	Dora E. Hopkins
Tract	Acres 200 Lease No. 72796
Well (Farm) No.	1 Serial No.
Elevation (Spirit Level)	690.80 Ground
Quadrangle	Madison
County	Boone District Scott
Engineer	Wm. S. Hayes
Engineer's Registration No.	1429
File No.	Drawing No.
Date	Sept. 16, 1954 Scale 1"=800'

STATE OF WEST VIRGINIA  
 DEPARTMENT OF MINES  
 OIL AND GAS DIVISION  
 CHARLESTON

**WELL LOCATION MAP**  
 FILE NO. B00-232-A

+ Denotes location of well on United States Topographic Maps, scale 1 to 62,500, latitude and longitude lines being represented by border lines as shown.

- Denotes one inch spaces on border line of original tracing.



STATE OF WEST VIRGINIA  
DEPARTMENT OF MINES  
OIL AND GAS DIVISION

669

WELL RECORD

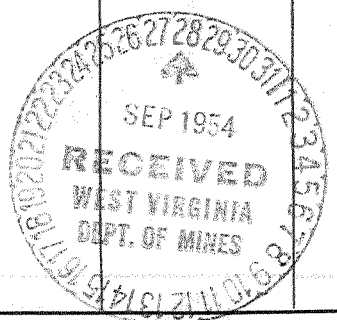
Permit No. \_\_\_\_\_ Oil or Gas Well Gas  
(KIND)

Company South Penn Natural Gas Company  
Address Union Trust Building, Parkersburg, W. Va.  
Farm Dora E. Hopkins Acres 200  
Location (waters) \_\_\_\_\_  
Well No. 1 Elev. 690.80  
District Scott County Boone  
The surface of tract is owned in fee by J. H. Hopkins  
Danville Address West Virginia  
Mineral rights are owned by J. H. Hopkins  
Danville Address West Virginia  
Drilling commenced June 10, 1924  
Drilling completed July 16, 1924  
Date Shot July 17, 24 From 1743' To 1759 1/2'  
With 60 Quarts  
Open Flow 6 /10ths Water in 2" Inch  
         /10ths Merc. in \_\_\_\_\_ Inch  
Volume 103 m 103 m Cu. Ft.  
Rock Pressure \_\_\_\_\_ lbs. \_\_\_\_\_ hrs.  
Oil \_\_\_\_\_ bbls., 1st 24 hrs.  
Fresh water \_\_\_\_\_ feet \_\_\_\_\_ feet  
Salt water \_\_\_\_\_ feet \_\_\_\_\_ feet

Casing and Tubing	Used in Drilling	Left in Well	Packers
Size			Kind of Packer
16			<u>Parmaco B.H.</u>
13			Size of <u>6-5/8x8 1/2"</u>
10	<u>40.9</u>	<u>40.9</u>	Depth set <u>1011'</u>
8 1/4	<u>382.4</u>		
6 5/8	<u>1019.6</u>	<u>1019.6</u>	
5 3/16			
3			Perf. top _____
2			Perf. bottom _____
Liners Used			Perf. top _____
			Perf. bottom _____

CASING CEMENTED \_\_\_\_\_ SIZE \_\_\_\_\_ No. Ft. \_\_\_\_\_ Date \_\_\_\_\_  
COAL WAS ENCOUNTERED AT \_\_\_\_\_ FEET \_\_\_\_\_ INCHES  
\_\_\_\_\_ FEET \_\_\_\_\_ INCHES \_\_\_\_\_ FEET \_\_\_\_\_ INCHES  
\_\_\_\_\_ FEET \_\_\_\_\_ INCHES \_\_\_\_\_ FEET \_\_\_\_\_ INCHES

Formation	Color	Hard or Soft	Top	Bottom	Oil, Gas or Water	Depth Found	Remarks
Soil				12			
Shell			12	15			
Slate & Shell			15	210	Water-Fresh	50	Hole full
Sand			210	230			
Slate			230	295			
Sand			295	440			
Slate			440	455			
Lime			455	467			
Slate			467	500			
Salt Sand			500	825	Oil-Show	790	
Maxon			825	880			
Sand & Shell			895	900			
Slate			900	905			
Lime			905	915			
Red Rock			915	920			
Sand			920	975			
Slate			975	990			
Shell			990	995			
Pencil Cave			995	1000			
Big Lime			1000	1265	Gas	1229	15 acf 2/10"W. -1"Opg.
Big Injun			1265	1305			
Slate & Shells			1305	1680			
Brown Slate			1680	1688			
Gritty Lime			1688	1695			
Slate & Shells			1695	1725			
Brown Shale			1725	1740			
Berea Sand			1740	1762	Gas	1743-1747	103 acf 6/10"W. -2"Opg.
Line			1762	1776			
Total Depth				1776			



JUNE 21 1956

