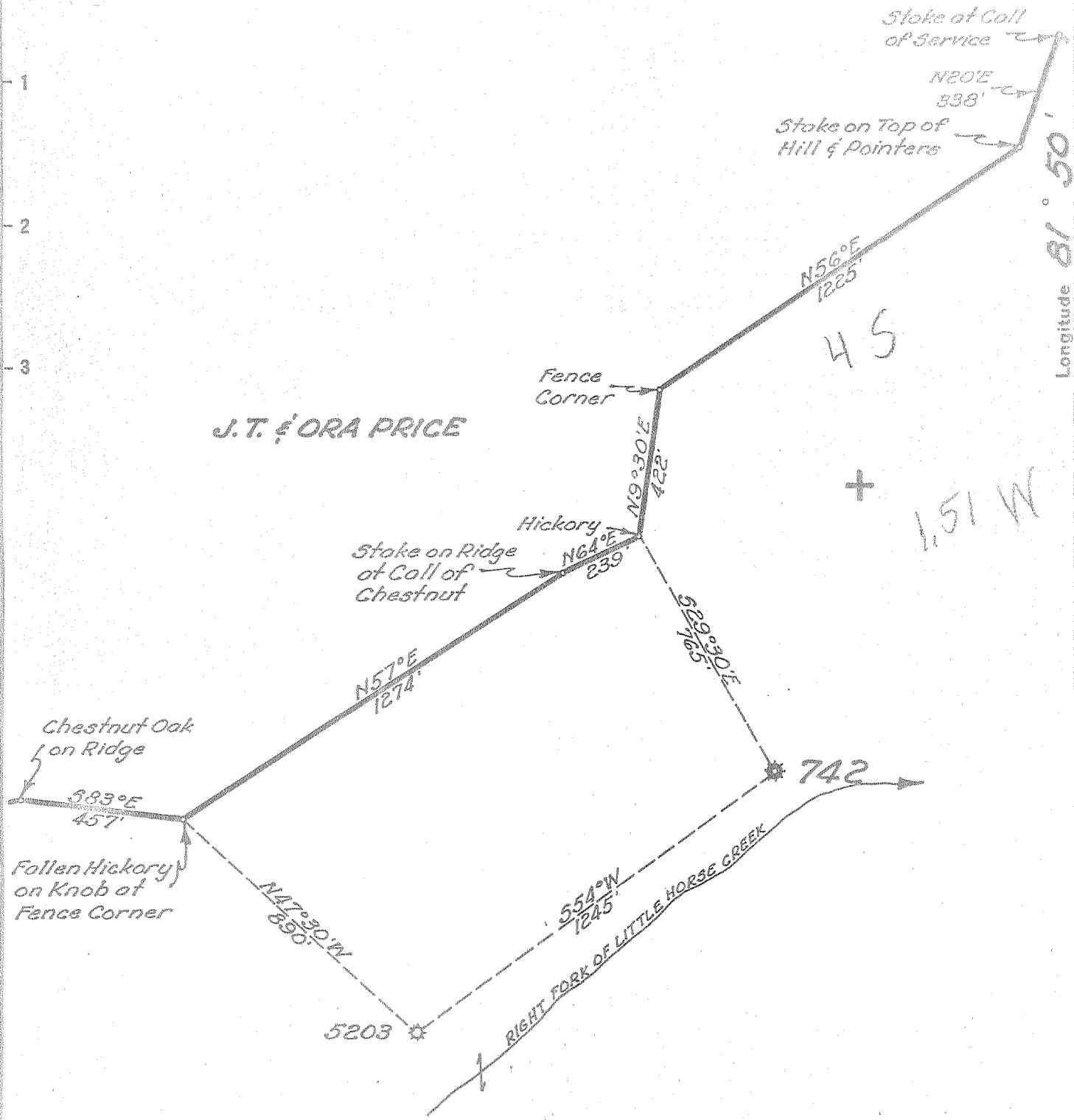


Latitude $38^{\circ} 10'$

Longitude $81^{\circ} 50'$



J. T. & ORA PRICE

45

1.51 W

HORSE CREEK COAL & LAND CO.

- New Location
- Drill Deeper
- Abandonment

Company UNITED FUEL GAS CO.
 Address CHARLESTON, W. VA.
 Farm HORSE CREEK COAL & LAND CO.
 Tract _____ Acres 9.531 Lease No. 3772
 Well (Farm) No. 11 Serial No. 742
 Elevation (Spirit Level) 688.12'
 Quadrangle MADISON
 County BOONE District SCOTT
 Engineer Seybert R. Russell
 Engineer's Registration No. 669
 File No. 48-45 Drawing No. _____
 Date 9-24-54 Scale 1"=400'

STATE OF WEST VIRGINIA
 DEPARTMENT OF MINES
 OIL AND GAS DIVISION
 CHARLESTON

WELL LOCATION MAP
 FILE NO. B00-233-A

- + Denotes location of well on United States Topographic Maps, scale 1 to 62,500, latitude and longitude lines being represented by border lines as shown.
- Denotes one inch spaces on border line of original tracing.

Boone 233A

Scott District, Boone County, W. Va.
By United Fuel Gas Co.
On 10,300 acres; Clendenin field; Lease No. 3772;
Drilling commenced Nov. 6, 1915; completed, Dec. 11, 1915.
Elevation, 715' B.
16" casing, 16'; 10", 58' 10"; 8½", 400' (pulled); 6⅝", 1271' 5";
2" tubing, 2072'.
Test before shot, 5/10ths Merc. in 2"; volume, 393,120 cu. ft.
Rock pressure, 570 lbs.
No.....in Gas Report.

	Top.	Bottom.	Thickness.
Sand, slate, and gravel	0	- 15	15
Sand and slate	15	- 200	185
Lime	200	- 248	48
Slate and sand	248	- 1095	847
Red rock	1095	- 1104	9
Slate and rock	1104	- 1175	71
Maxton Sand	1175	- 1190	15
Slate, lime	1190	- 1264	74
Big Lime	1264	- 1470	206
Slate	1470	- 1475	5
Big Injun Sand	1475	- 1505	30
Slate and shells	1505	- 1930	425
Brown shale	1930	- 1945	15
Berea Grit	1945	- 1960	15
Slate	1960	- 1975	15
Lime	2035	- 2046	11
Total depth		2046	



STATE OF WEST VIRGINIA
DEPARTMENT OF MINES
OIL AND GAS DIVISION

659

Quadrangle Madison

WELL RECORD

Permit No. 42-2324

Oil or Gas Well Gas
(KIND)

Company UNITED FUEL GAS CO.
Address P.O. Box 1273, Charleston 25, W. Va.
Farm Horse Creek Coal & Land Acres 9531
Location (waters) Little Horse Creek
Well No. 742 Elev. 688.12'
District Scott County Boone
The surface of tract is owned in fee by _____
Address _____

Casing and Tubing	Used in Drilling	Left in Well	Packers
Size			Kind of Packer
16			<u>Parmaco</u>
13			Size of
10		<u>58-10"</u>	<u>2x6-5/8x16</u>
8 1/4			Depth set
6 1/2		<u>1271-5"</u>	
5 3/8		<u>1342'</u>	
3			Perf. top
2			Perf. bottom
Liners Used			Perf. top
			Perf. bottom

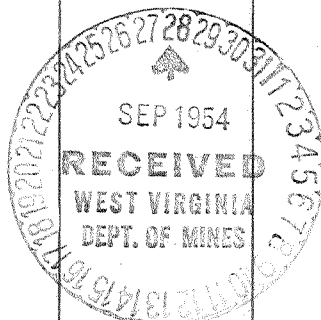
Mineral rights are owned by Horse Creek Coal & Land Co.
Rt. 2 % J.R. Wingfield Treas. Charlottesville, VA.
Drilling commenced 11-6-15
Drilling completed 12-11-15
Date Shot _____ From _____ To _____
With _____

Open Flow _____ /10ths Water in _____ Inch
5 /10ths Merc. in 2 Inch
Volume 348,000 Cu. Ft.
Rock Pressure 570 lbs. _____ hrs.
Oil _____ bbls., 1st 24 hrs.
Fresh water _____ feet
Salt water _____ feet

CASING CEMENTED _____ SIZE _____ No. Ft. _____ Date _____

COAL WAS ENCOUNTERED AT 40 FEET 36 INCHES
110 FEET 36 INCHES 294 FEET 36 INCHES
_____ FEET _____ INCHES _____ FEET _____ INCHES

Formation	Color	Hard or Soft	Top	Bottom	Oil, Gas or Water	Depth Found	Remarks
Sandy Gravel			0	10			
Gravel			10	15			
Slate			15	17			
Sand			17	25			
Slate			25	40			
Coal			40	43			
Sand			43	85			
Slate Black			85	110			
Coal			110	113			
Slate			113	120			
Sand			120	125			
Slate			125	180			
Slate, White			180	200			
Lime			200	248			
Slate			248	258			
Sand			258	294			
Coal			294	297			
Lime			297	332			
Slate			332	350			
Sand			350	384			
Slate			384	387			
Sand			387	520			
Slate			520	575			
Sand			575	684			
Slate			684	700			
Sand			700	740			
Slate			740	743			
Sand			743	790			
Slate			790	825			
Sand			825	837			
Slate			837	840			
Sand			840	906			
Slate			906	918			
Sand			918	935			
Slate			935	970			
Sand			970	1085			
Slate White			1085	1095			
Red Rock			1095	1104			
Slate			1104	1110			



Gas 1947' 1957'

IAN 7 1954

Formation	Color	Hard or Soft	Top	Bottom	Oil, Gas or Water	Depth Found	Remarks
Lime			1110	1118			
Slate			1118	1144			
Red Rock			1144	1150			
Slate			1150	1156			
Red Rock			1156	1166			
Slate			1166	1175			
Maxon Sand			1175	1190			
Slate			1190	1210			
Little Lime			1210	1249			
Slate Pencil			1249	1255			
Lime			1255	1261			
Slate			1261	1264			
Big Lime			1264	1470			
Slate			1470	1475			
Big Injun			1475	1505			
Slate			1505	1585			
Gritty Lime			1585	1656			
Slate & Shells			1656	1930			
Brown Shale			1930	1945			
Berea Grit			1945	1960			
Slate			1960	1975			
Lime			1975	2000			
Slate			2000	2035			
Lime			2035	2046			
Total depth			2046'				

Date September 24, 19 54

APPROVED UNITED FUEL GAS CO., Owner

By S. R. Furell
(Title)

Mgr. Civil Engr. Dept.