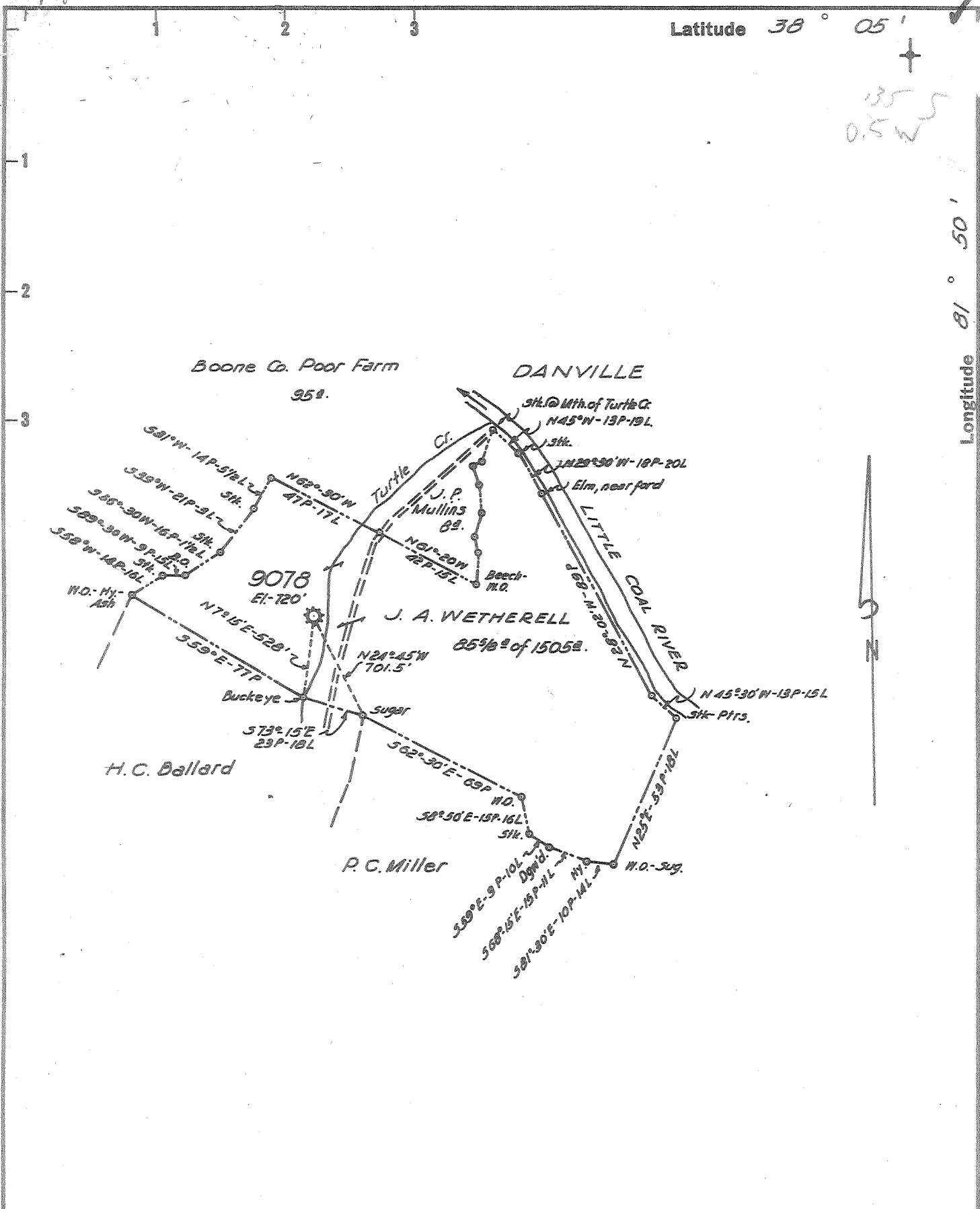


Latitude 38° 05'

Longitude 81° 50'

135  
0.5 W



New Location ..   
 Drill Deeper .....   
 Abandonment .....  FORMERLY H. N. G. Co. WELL No 9078

Company PACK & JACKSON  
 Address HAMLIN, W. VA.  
 Farm J. A. WETHERELL  
 Tract \_\_\_\_\_ Acres 1505 Lease No. 58533  
 Well (Farm) No. \_\_\_\_\_ Serial No. 9078  
 Elevation (Spirit Level) 720'  
 Quadrangle MADISON  
 County BOONE District SCOTT  
 Engineer HENRY A. HAIN  
 Engineer's Registration No. 3150  
 File No. P&J. 8-60 Drawing No. \_\_\_\_\_  
 Date APRIL 25, 1960 Scale 1" = 50 POLES

STATE OF WEST VIRGINIA  
 DEPARTMENT OF MINES  
 OIL AND GAS DIVISION  
 CHARLESTON

**WELL LOCATION MAP**  
 FILE NO. Boo 371-A

+ Denotes location of well on United States Topographic Maps, scale 1 to 62,500, latitude and longitude lines being represented by border lines as shown.  
 - Denotes one inch spaces on border line of original tracing.



STATE OF WEST VIRGINIA  
DEPARTMENT OF MINES  
OIL AND GAS DIVISION

770

WELL RECORD

Madison SC  
Permit No. 371-A

Oil or Gas Well Gas

(KIND)

Company Hope Natural Gas Company  
 Address Clarksburg, W. Va.  
 Farm Wetheroll, J. A. Acres 1,505  
 Location (waters) Turtle Creek  
 Well No. 9078 Elev. 720  
 District Scott County Boone  
 The surface of tract is owned in fee by \_\_\_\_\_  
 Address \_\_\_\_\_  
 Mineral rights are owned by \_\_\_\_\_  
 Address \_\_\_\_\_  
 Drilling commenced 4/2/24  
 Drilling completed 5/8/24  
 Date Shot 2/16/42 From \_\_\_\_\_ To \_\_\_\_\_  
 With 60 qts.  
 Open Flow \_\_\_\_\_ /10ths Water in \_\_\_\_\_ Inch  
 \_\_\_\_\_ /10ths Merc. in \_\_\_\_\_ Inch  
 Volume \_\_\_\_\_ Cu. Ft.  
 Rock Pressure \_\_\_\_\_ lbs. \_\_\_\_\_ hrs.  
 Oil \_\_\_\_\_ bbls., 1st 24 hrs.  
 Fresh water \_\_\_\_\_ feet \_\_\_\_\_ feet  
 Salt water \_\_\_\_\_ feet \_\_\_\_\_ feet

Casing and Tubing	Used in Drilling	Left in Well	Packers
Size			
16			Kind of Packer
18			
10	55'	None	Size of
8 1/2	302'	None	
6 3/8	1,015'	1,015'	Depth set
5 3/16			
3			Perf. top
2 tubing	1,690'	none	Perf. bottom
Liners Used			Perf. top
2" S.L. Tubing	1715'	1715'	Perf. bottom

CASING CEMENTED \_\_\_\_\_ SIZE \_\_\_\_\_ No. Ft. \_\_\_\_\_ Date \_\_\_\_\_

COAL WAS ENCOUNTERED AT \_\_\_\_\_ FEET \_\_\_\_\_ INCHES  
 \_\_\_\_\_ FEET \_\_\_\_\_ INCHES \_\_\_\_\_ FEET \_\_\_\_\_ INCHES  
 \_\_\_\_\_ FEET \_\_\_\_\_ INCHES \_\_\_\_\_ FEET \_\_\_\_\_ INCHES

Formation	Color	Hard or Soft	Top	Bottom	Oil, Gas or Water	Depth Found	Remarks
Maxon			875	905			
Little Lime			905	955			
Pencil Cave			955	958			
Big Lime			958	1,195	Gas	1,024	
Injun Sand			1,195	1,231			
Berea Sand			1,673	1,696	Gas	1,678	
Total Depth				1,700			

