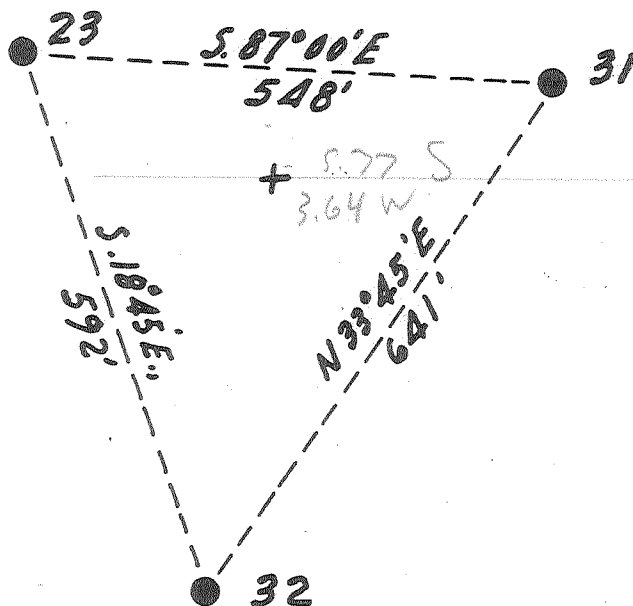


Latitude 38° 10'

Longitude 81° 30'

LaFollette, Robson & Prichard, Tract "B"
5000~~ac~~



New Location...
 Drill Deeper.....
 Abandonment.....

Company Pure Oil Co.
 Address Box 311 Olney, Ill.
 Farm L. R. & P.
 Tract B Acres 5000 Lease No. 224
 Well (Farm) No. 32 Serial No. 546
 Elevation (Spirit Level) 1629.7
 Quadrangle Peyton
 County Boone District Sherman
 Engineer J. B. Hunter
 Engineer's Registration No. Ohio-2912
 File No. _____ Drawing No. _____
 Date 4/14/60 Scale 1" = 200'

STATE OF WEST VIRGINIA
 DEPARTMENT OF MINES
 OIL AND GAS DIVISION
 CHARLESTON

WELL LOCATION MAP
 FILE NO. Boo-382-A

+ Denotes location of well on United States Topographic Maps, scale 1 to 62,500, latitude and longitude lines being represented by border lines as shown.

- Denotes one inch spaces on border line of original tracing.