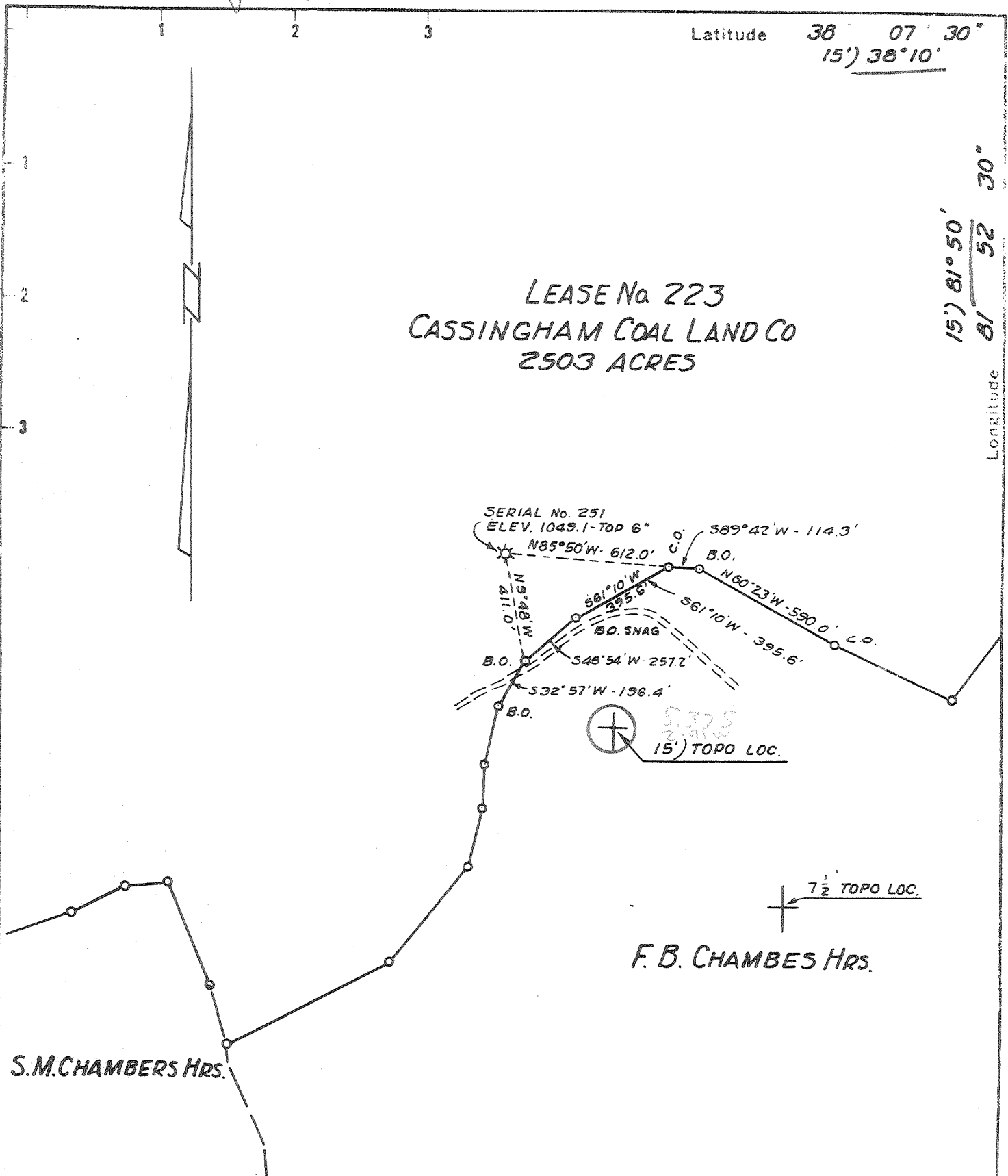


Latitude $38^{\circ} 07' 30''$
 $15' 38^{\circ} 10'$

Longitude $81^{\circ} 52' 30''$

LEASE No 223
 CASSINGHAM COAL LAND CO
 2503 ACRES



New Location
 Drill Deeper
 Abandonment
 9/21/76

Map Scale 1" IN 200'
 Source of Elevation, B.M. 0-125 Top of Rail C. & O. R.R. at Mouth of Slippery Gut Branch
 All the information contained on this map was obtained from the original edge and rechecked by the Department of Mines and Geology of West Virginia.

Company MILLS DRILLING Co. INC.
 Address P.O. Box 65 WAYNE WV. 25570
 Farm CASSINGHAM COAL LAND CO.
 Tract. Acres 2503 Lease No. 223
 Well (Farm) No. 12 Serial No. 251
 Elevation (Spirit Level) 1049.1 TOP 6"
 Quadrangle MUD 7 1/2' MADISON 15' C
 County BOONE District SCOTT
 Engineer J.E. [Signature]
 Engineer's Registration No. 379 (W.VA. LLS)
 File No. _____ Drawing No. _____
 Date SEPT. 17, 1976 Scale 1" = 500'

STATE OF WEST VIRGINIA
 DEPARTMENT OF MINES
 OIL AND GAS DIVISION
 CHARLESTON
WELL LOCATION MAP
 FILE NO. **B00-460-A**

+ Denotes location of well on United States Topographic Maps, scale 1 to 62,500 latitude and longitude lines being represented by border lines as shown.

-- Denotes one inch spaces on border line of original tracing.