

ACCURACY 1" IN 200'

New Location  SOURCE ELEV. WELL NO. 7340 1049.70  
 Drill Deeper   
 Redrill   
 Abandonment  3-28-84

"I, the undersigned, hereby certify that this map is correct to the best of my knowledge and belief and shows all the information required by paragraph 6 of the rules and regulations of the oil and gas section of the mining laws of West Virginia."

Company Steve Duckworth  
 Address DAVISON RT. BOX 88 - GASSAWAY WV 26024  
 Farm PARKERSBURG MILL CO.  
 Tract \_\_\_\_\_ Acres 2850 Lease No. \_\_\_\_\_  
 Well (Farm) No. 2 Serial No. \_\_\_\_\_  
 Elevation (Spirit Level) 1061.55  
 Quadrangle GASSAWAY  
 County BRAXTON District BIRCH  
 Engineer L. F. Dyer  
 Engineer's Registration No. 804  
 File No. \_\_\_\_\_ Drawing No. \_\_\_\_\_  
 Date 4-27-66 Scale 1" = 1000'

STATE OF WEST VIRGINIA  
 DEPARTMENT OF MINES  
 OIL AND GAS DIVISION  
 CHARLESTON

WELL LOCATION MAP  
 FILE NO. BRAX-659-P

+ Denotes location of well on United States Topographic Maps, scale 1 to 62,500, latitude and longitude lines being represented by border lines as shown.

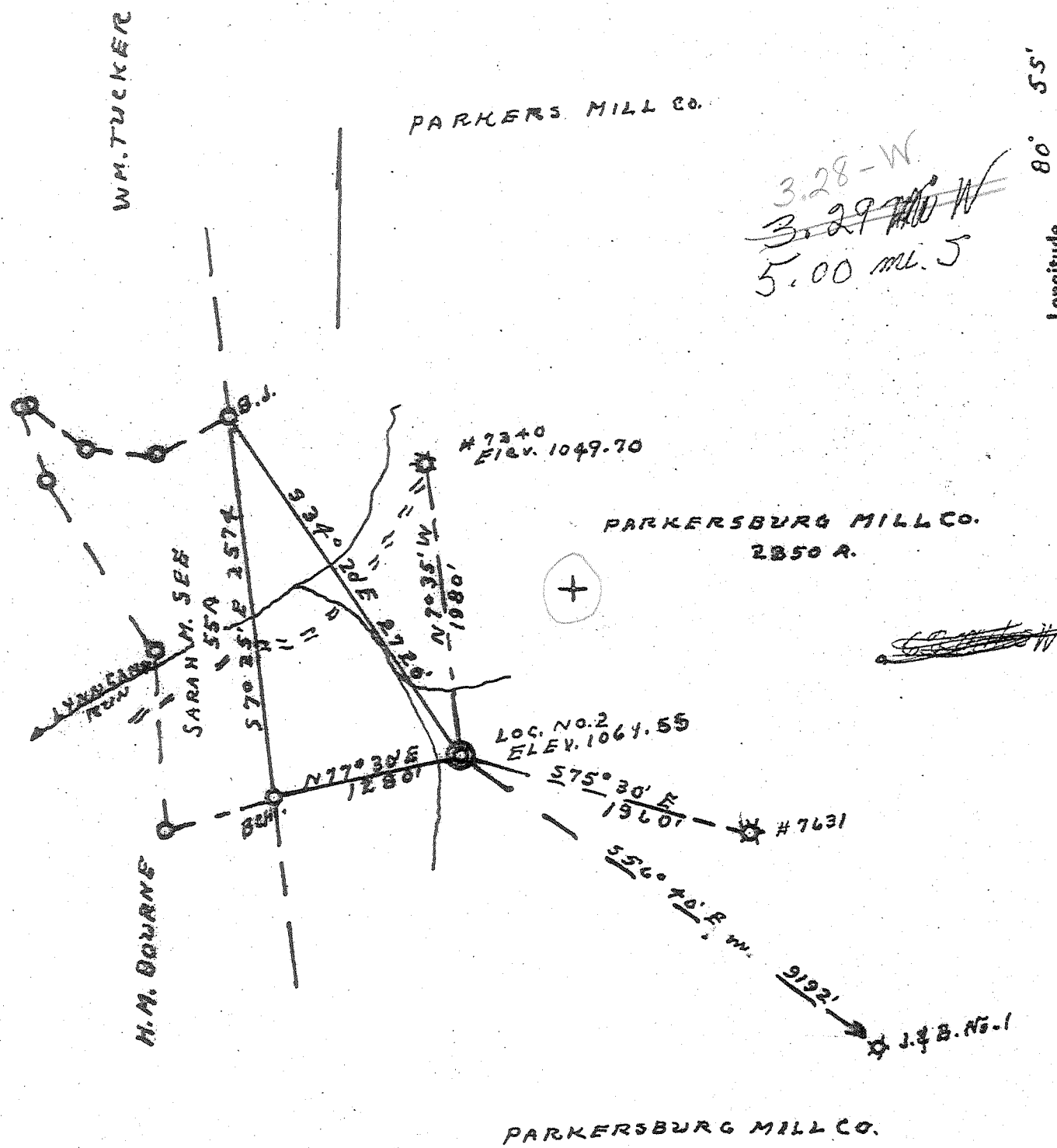
- Denotes one inch spaces on border line of original tracing.

APR 23 1984  
 47-007

DEEP WELL 3-0 (202)

Latitude 38° 45'

Longitude 80° 55'



3.28-W  
~~3.29-W~~  
 5.00 ml. J

New Location  SOURCE ELEV. WELL NO. 7340 1049.70

Drill Deeper

Re-drill

Abandonment

"I, the undersigned, hereby certify that this map is correct to the best of my knowledge and belief and shows all the information required by paragraph 6 of the rules and regulations of the oil and gas section of the mining laws of West Virginia."

Company J. & B. DRILLING & OPERATING CO. INC.

Address SPENCER, W. VA.

Form PARKERSBURG MILL CO.

Tract Acres 2850 Lease No. \_\_\_\_\_

Well (Form) No. 2 Serial No. \_\_\_\_\_

Elevation (Spirit Level) 1064.55

Quadrangle GASSAWAY - NW

County BRAXTON District BIRCH

Engineer L. J. B...

Engineer's Registration No. 804

File No. \_\_\_\_\_ Drawing No. \_\_\_\_\_

Date 4-27-66 Scale 1" = 1000'

STATE OF WEST VIRGINIA  
 DEPARTMENT OF MINES  
 OIL AND GAS DIVISION  
 CHARLESTON

WELL LOCATION MAP

FILE NO. BRAX-659  
 Class: 3/

+ Denotes location of well on United States Topographic Maps, scale 1 to 62,500, latitude and longitude lines being represented by border lines as shown.

- Denotes one inch spaces on border line of original tracing.

4-030202



STATE OF WEST VIRGINIA  
DEPARTMENT OF MINES  
OIL AND GAS DIVISION

Rotary   
Spudder   
Cable Tools   
Storage

WELL RECORD

Oil or Gas Well  **Dry Hole** (KIND)

Permit No. 659-BRAX

Company J & B Drilling & Operating Co., Inc.  
Address P. O. Box 58, Spencer, W. Va. 25276  
Parkersburg Mill Acres

Casing and Tubing	Used in Drilling	Left in Well	Packers
Size			Kind of Packer
16			
13			Size of
10			
8 1/4			Depth set
6 3/4			
5 3/16			Perf. top
4 1/2			Perf. bottom
3			Perf. top
2			Perf. bottom
Liners Used			

Location (waters) \_\_\_\_\_  
Well No. #2 Elev. 1062  
Tract Berch County Braxton  
The surface of tract is owned in fee by \_\_\_\_\_  
Address \_\_\_\_\_

General rights are owned by \_\_\_\_\_  
Address \_\_\_\_\_

Drilling commenced 8-17-66  
Drilling completed 10-23-66

Date Shot From To

Open Flow /10ths Water in \_\_\_\_\_ Inch  
/10ths Merc. in \_\_\_\_\_ Inch

Volume \_\_\_\_\_ Cu. Ft.  
Rock Pressure \_\_\_\_\_ lbs. \_\_\_\_\_ hrs.

\_\_\_\_\_ bbls., 1st 24 hrs.

WELL ACIDIZED (DETAILS) \_\_\_\_\_

WELL FRACTURED (DETAILS) \_\_\_\_\_

RESULT AFTER TREATMENT (Initial open Flow or bbls.) \_\_\_\_\_

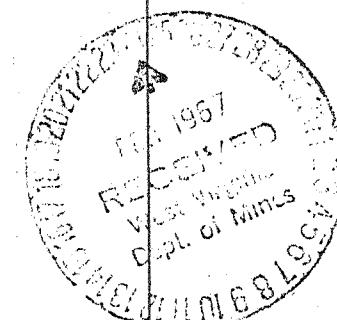
ROCK PRESSURE AFTER TREATMENT \_\_\_\_\_ HOURS

Fresh Water \_\_\_\_\_ Feet Salt Water \_\_\_\_\_ Feet

Producing Sand Newburg (dry) \_\_\_\_\_ Depth \_\_\_\_\_

Attach copy of cementing record.  
CASING CEMENTED 13 3/8 91 No. Ft. \_\_\_\_\_ Date \_\_\_\_\_  
Amount of cement used (bags) 8 5/8 2485 95 sx - 200 sx  
Name of Service Co. Well Service Inc., & Dowell  
COAL WAS ENCOUNTERED AT \_\_\_\_\_ FEET \_\_\_\_\_ INCHES  
\_\_\_\_\_ FEET \_\_\_\_\_ INCHES \_\_\_\_\_ FEET \_\_\_\_\_ INCHES  
\_\_\_\_\_ FEET \_\_\_\_\_ INCHES \_\_\_\_\_ FEET \_\_\_\_\_ INCHES

Formation	Color	Hard or Soft	Top	Bottom	Oil, Gas or Water	Depth	Remarks
Rock			0	110			
Rock			110	700			
Red Rock & Shale			700	900			
Rock			900	1,050			
Sand & Shale			1,050	1,100			
Sandy Shale			1,100	1,300			
Salt Sand			1,300	1,500			
Shale & Lime			1,500	1,720			
Lime			1,720	1,860			
Shale			1,860	2,050			
Shaley Sand			2,050	2,370			
Shale			2,370	2,460			
Shaley Sand			2,460	3,150			
Sandy Shale			3,150	3,260			
Shale			3,260	4,800			
Sand			4,800	4,860			
Shale			4,860	5,010			
Chert			5,010	5,110			
Sand			5,110	6,400			
			6,400	6,590			
			6,590	7,800			
				1,860			
				5,940			



UFG Scout Report, Feb. 22, 1967:  
Onondaga 6494' -  
Oriskany 6592' - 6626'  
Newburg 7706' - 7745' ?  
TD 7814'  
Will drill to Clinton later.

GEOLOG

A later report states that the well did not

Deep



STATE OF WEST VIRGINIA DEPARTMENT OF MINES OIL AND GAS DIVISION WELL RECORD

Rofery [ ] Spudder [ ] Cable Tools [ ] Storage [ ]

Oil or Gas Well [ ] Dry Hole [ ]

Quadrangle Grassway

Permit No. 659-BRAX

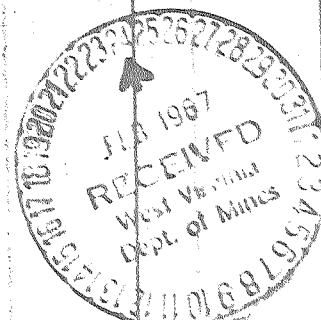
Company J & B Drilling & Operating Co., Inc. Address P. O. Box 58, Spencer, W. Va. 25276 Farm Parkersburg Mill Acres. Location (waters) Well No. #2 Elev. 1062 District Berch County Braxton The surface of tract is owned in fee by Mineral rights are owned by Drilling commenced 8-17-66 Drilling completed 10-23-66 Date Shot From To With Open Flow /10ths Water in. Inch /10ths Merc. in. Inch Volume Cu. Ft. Rock Pressure lbs. hrs. Oil bbls., 1st 24 hrs. WELL ACIDIZED (DETAILS) WELL FRACTURED (DETAILS)

Table with columns: Casing and Tubing (Size), Used in Drilling, Left in Well, Packets (Kind of Packet, Size of, Depth set, Perf. top, Perf. bottom). Rows include sizes 16, 13, 10, 8 1/4, 6 1/4, 5 3/16, 4 1/4, 3, 2 and Liners Used.

Attach copy of cementing record. CASING CEMENTED 13 3/8 SIZE 91 No. Ft. 2485 Date 95 sx - 200 sx Amount of cement used (bags). Name of Service Co. Well Service Inc., & Dowell COAL WAS ENCOUNTERED AT FEET INCHES FEET INCHES FEET INCHES

RESULT AFTER TREATMENT (Initial open Flow or bbls.) ROCK PRESSURE AFTER TREATMENT HOURS Fresh Water Foot Salt Water Foot Producing Sand Depth

Geological log table with columns: Formation, Color, Hard or Soft, Top, Bottom, Oil, Gas or Water, Depth, Remarks. Rows list formations from Rock to Sand with depths from 0 to 7,800 feet. Includes 'NEWBURG' at the bottom.



7815