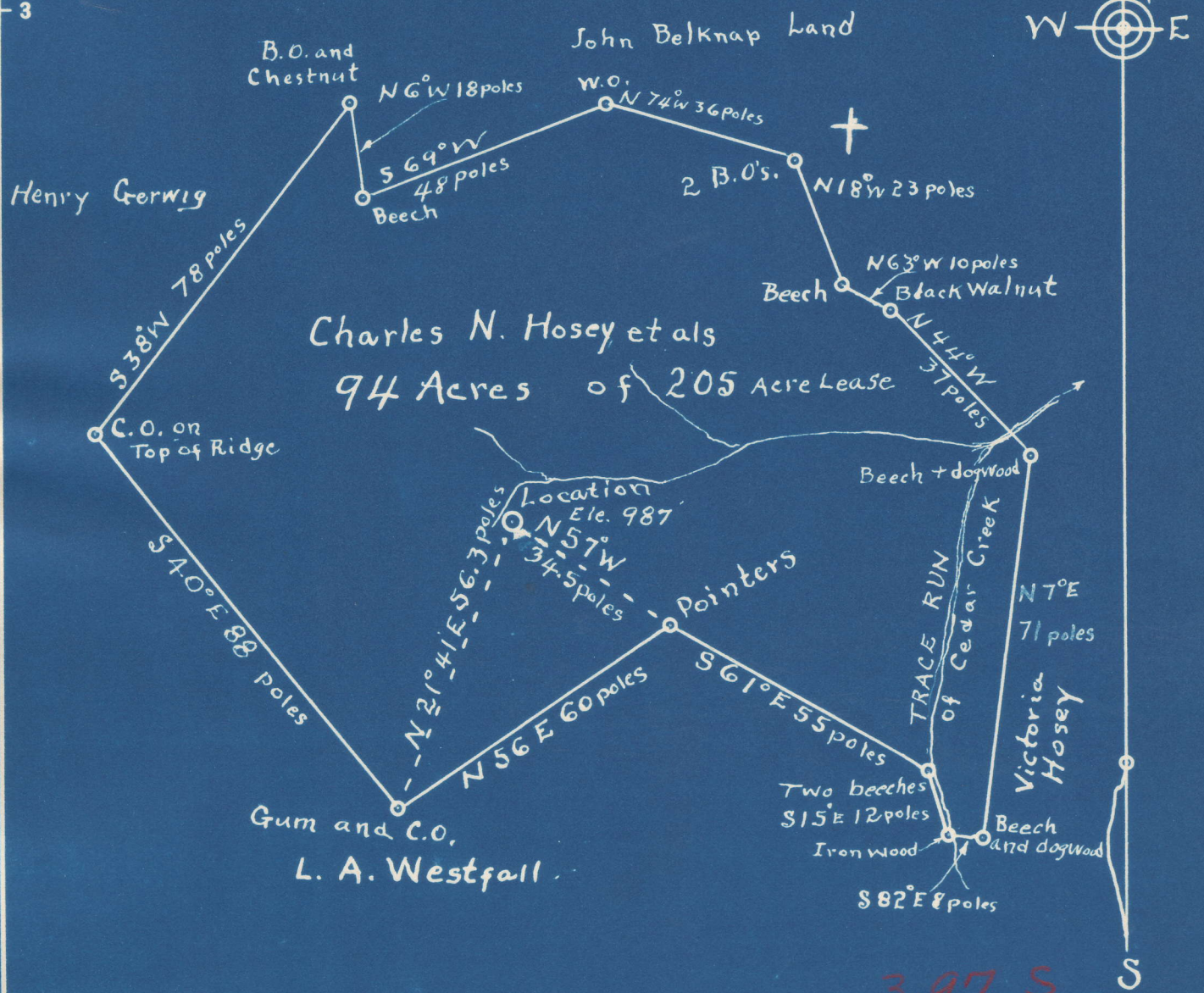


Latitude 38° 50'

Longitude 80° 45'



3.97 S
2.33 W

- New Location...
- Drill Deeper...
- Abandonment...

Company Earl Goodwin
 Address Jane Lew
 Farm Charles N. Hosey et als (205 Acres)
 Tract 1 Acres 94 Lease No. _____
 Well (Farm) No. 1 Serial No. _____
 Elevation (Spirit Level) 987 Altimeter _____
 Quadrangle Glenville
 County Braxton District Otter
 Engineer M. L. B. Linger
 Engineer's Registration No. 261
 File No. _____ Drawing No. _____
 Date December 20, 1948 Scale 1" = 30 poles

STATE OF WEST VIRGINIA
 DEPARTMENT OF MINES
 OIL AND GAS DIVISION
 CHARLESTON

WELL LOCATION MAP
 FILE NO. BRAX-80-A

+ Denotes location of well on United States Topographic Maps, scale 1 to 62,500, latitude and longitude lines being represented by border lines as shown.
 - Denotes one inch spaces on border line of original tracing.