

Latitude

Longitude

| | |
|--|-------|
| | |
| | 2.495 |
| | .81w |

Topo Location

7.5' Loc. _____ 15' Loc. _____
 _____ (calc.) _____

Company Wheeling Steel Corp

Farm Wheeling Steel Corp #163

15' Quad _____
(sec.)

7.5' Quad Steubenville East

District Cross Creek

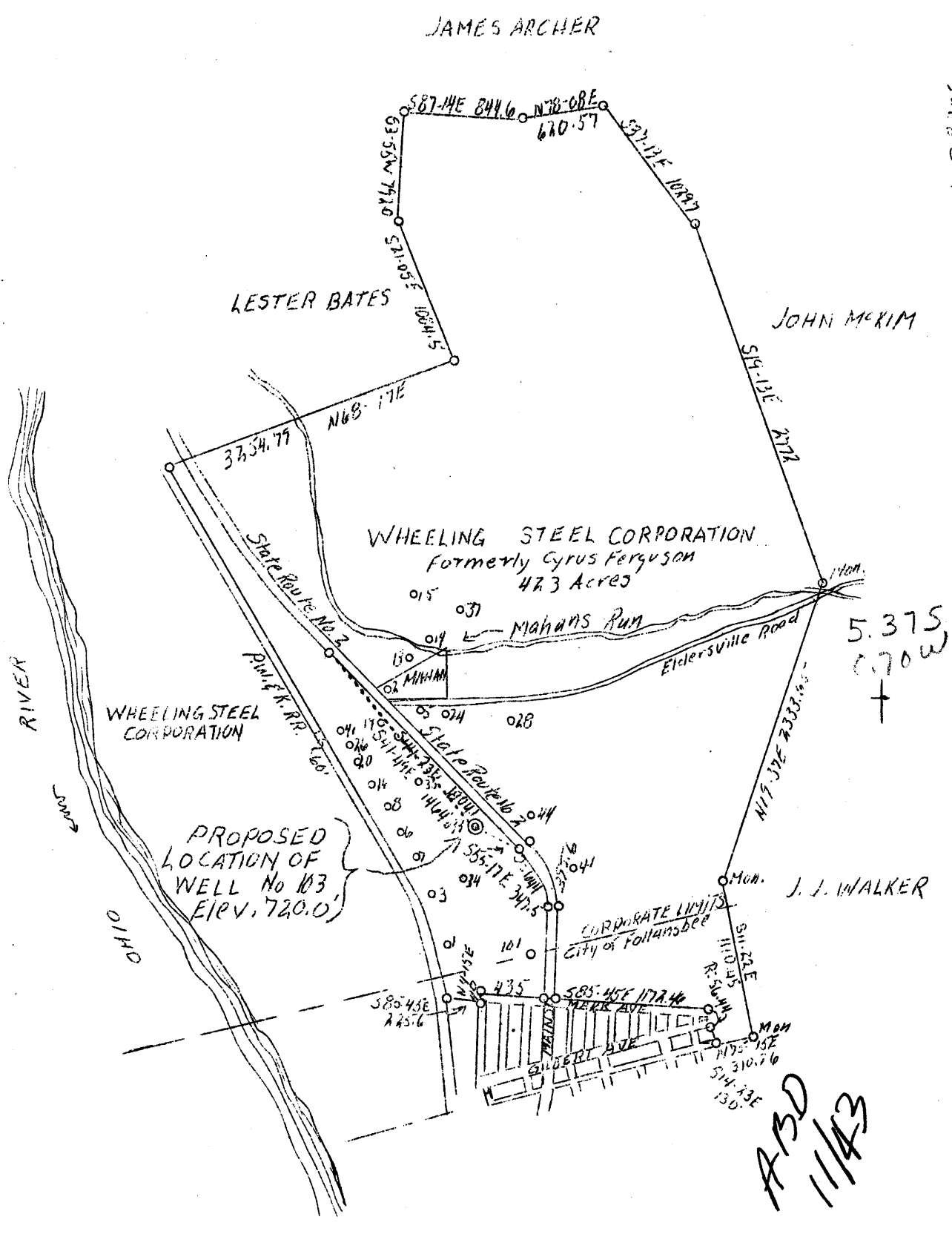
WELL LOCATION PLAT

County 009 Permit 18

m

Latitude 40°25'

Longitude 80°35'



| | |
|-----------------|---|
| Company | Wheeling Steel Corp., |
| Address | Wheeling, W. Va. |
| Farm | Wheeling Steel Corp. Formerly Cyrus Ferguson |
| Acres | 423 |
| Well (Farm) No. | 103 |
| Quadrangle | Steubenville C |
| County | Brooke |
| District | Cross Creek |
| Engineer | Eugene M. Smith - C. C. Smith's Sons |
| Eng. Reg. No. | 390 |
| Date | June 2, 1939 |
| Scale | 1" - 1000' |

STATE OF WEST VIRGINIA
Department of Mines
OIL & GAS DIVISION
Charleston

WELL LOCATION MAP
File No. B70-18

x Denotes location of well on U. S. Topographic Maps, scale 1 to 62,500, latitude and longitude lines being represented by border lines as shown.

- Denotes one inch spaces on border line of original tracing.

WEST VIRGINIA DEPARTMENT OF MINES

OIL & GAS DIVISION

WELL RECORD

Permit No. Brc-18

Oil Well

- Quad.

CASING & TUBING

| | | | | |
|--------------------|-----------------------------|---------------|------|------|
| Company | Wheeling Steel Corporation | 10 | 52 | 52 |
| Address | Wheeling, W. Va. | 8-1/4 | 347 | 347 |
| Farm | Corporation ACRES 423 | 6-5/8 | 960 | 960 |
| Location | 1/2 Mile East of Ohio River | 2 | 1340 | 1340 |
| Well No. | 102 ELEV. 720 feet | | | |
| District | Cross Creek - Brooke County | No Packer | | |
| Surface & Mineral | Wheeling Steel Corp. | | | |
| Drilling commenced | June 12, 1939 | Coal At: | | |
| Drilling completed | July 5, 1939 | 242' and 280' | | |
| Date shot | 7/6/39 - Depth 1320-1335 | | | |
| Open Flow | No Record | | | |
| Volume | No Gas | | | |
| Rock Pressure | Name | | | |
| Oil | 3 bbls. 1st 24 hrs. | | | |
| Fresh Water | 85 to 105 - Salt Water 520 | | | |

Formation Color ^{HT}/₅ Top Base Result Formation Color ^{HT}/₅ Top Base Result

| Formation | Color | ^{HT} / ₅ | Top | Base | Result | Formation | Color | ^{HT} / ₅ | Top | Base | Result |
|--------------------|-------|------------------------------|------|------|---|-----------|-------|------------------------------|-----|------|--------|
| Sand | | | | | | | | | | | |
| Gravel | brn | s | 1 | 50 | | | | | | | |
| Slate | wh | m | 50 | 70 | | | | | | | |
| Limestone | wh | m | 70 | 85 | | | | | | | |
| Sandstone | brn | m | 85 | 105 | FW 3 bbls. per hr. | | | | | | |
| Slate and Red Rock | drk | m | 105 | 230 | | | | | | | |
| Slate | blk | h | 230 | 240 | | | | | | | |
| Limestone | lgt | m | 240 | 242 | | | | | | | |
| Coal | drk | m | 242 | 246 | Upper Freeport | | | | | | |
| Slate | wh | m | 246 | 265 | | | | | | | |
| Fine Clay | lgt | s | 265 | 270 | | | | | | | |
| Sand | lgt | m | 270 | 275 | Cow Run | | | | | | |
| Shale | brn | m | 275 | 280 | | | | | | | |
| Coal | drk | m | 280 | 284 | Lower Freeport | | | | | | |
| Lime Shells | lgt | m | 284 | 295 | | | | | | | |
| Slate | drk | m | 295 | 310 | | | | | | | |
| Lime Shells | lgt | m | 310 | 325 | | | | | | | |
| Slate | drk | m | 325 | 360 | Trace of Gas at 360 | | | | | | |
| Sand | lgt | m | 360 | 450 | | | | | | | |
| Slate | drk | m | 450 | 548 | Trace of Gas at 520 | | | | | | |
| Sand | lgt | m | 548 | 600 | Trace of Gas at 550 | | | | | | |
| Slate | drk | m | 600 | 625 | | | | | | | |
| Sand | lgt | m | 625 | 650 | | | | | | | |
| Slate | drk | m | 650 | 660 | | | | | | | |
| Limestone | lgt | h | 660 | 800 | | | | | | | |
| Sand | lgt | m | 800 | 960 | Strong showing of gas at 842-850 - Injun Sand | | | | | | |
| Slate & Shells | drk | m | 960 | 1231 | | | | | | | |
| Sand | lgt | m | 1231 | 1254 | Maxon | | | | | | |
| Shale | gr | m | 1254 | 1295 | | | | | | | |
| Shale | brn | m | 1295 | 1311 | | | | | | | |
| Slate | blk | h | 1311 | 1314 | Cap Rock | | | | | | |
| Sand | wh | s | 1314 | 1333 | Berea Sand | | | | | | |
| Slate | blk | m | 1333 | 1335 | | | | | | | |

Shot with 40 qts. glycerine.