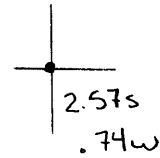


Latitude

Longitude



Topo Location

7.5' Loc. _____ 15' Loc. _____
 _____ (calc.) _____

Company Wheeling Steel Corp

Farm Wheeling Steel Corp

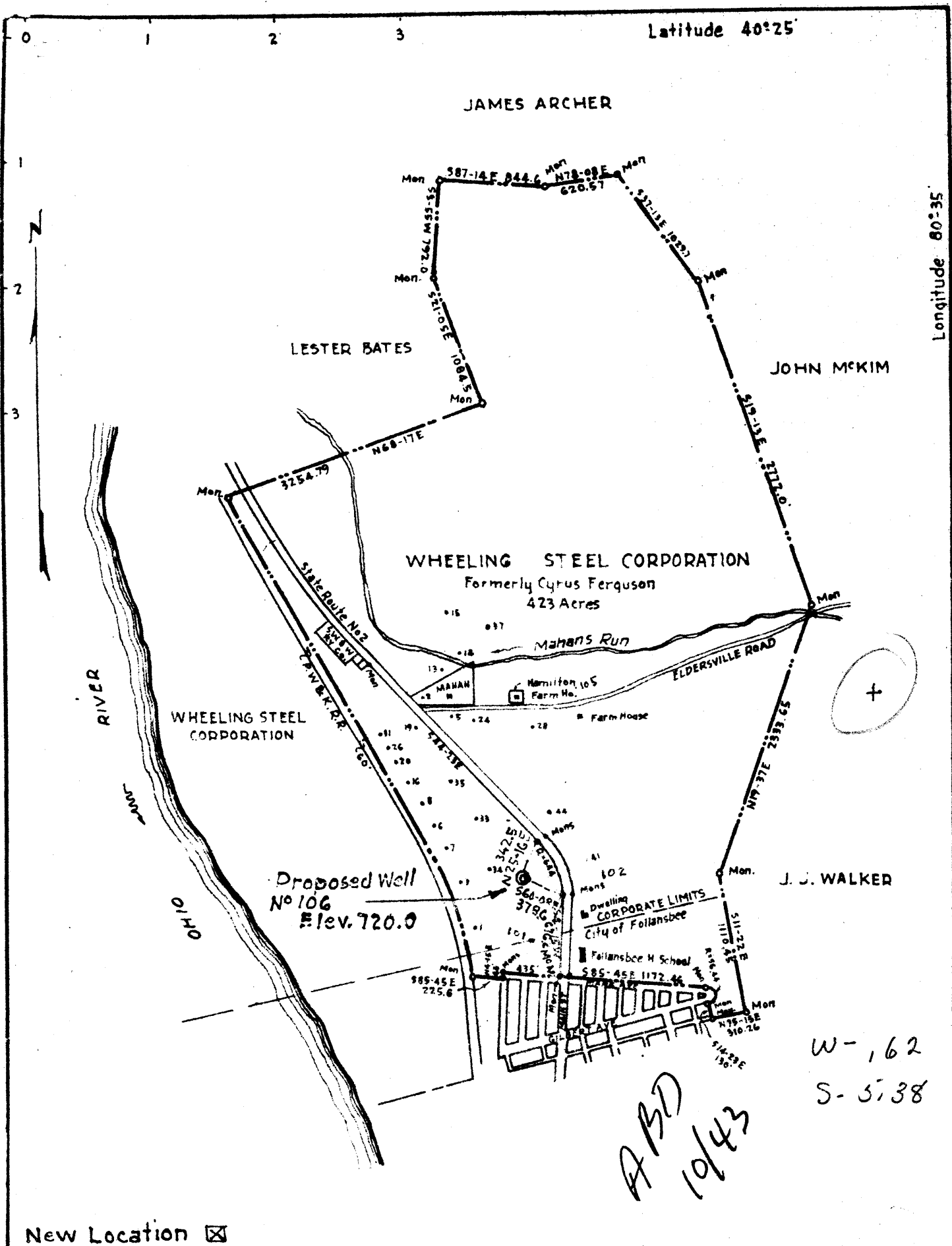
15' Quad _____
(sec.)

7.5' Quad Steubenville East

District Cross Creek

WELL LOCATION PLAT

County 009 **Permit** 21



New Location

COMPANY Wheeling Steel Corporation
 ADDRESS (General Office) Wheeling, W. Va
 FARM Wheeling Steel Corporation { Formerly Cyrus Ferguson }
 TRACT _____ ACRES 423 LEASE NO. _____
 WELL (Farm) No 106 SERIAL No. _____
 QUADRANGLE Steubenville
 COUNTY Brooke
 DISTRICT Cross Creek
 ENGINEER Eugene M. Smith - C.C. Smith's Sons
 ENGINEER'S REGISTRATION No 390
 FILE No _____ DRAWING No _____
 DATE Feb 6, 1940 SCALE - 1" = 1000'

STATE OF WEST VIRGINIA
 DEPARTMENT OF MINES
 OIL AND GAS DIVISION
 CHARLESTON

WELL LOCATION MAP
 FILE NO. BRO-21

+ Denotes location of well on United States Topographic Maps, Scale 1 to 62,500 latitude and longitude lines being represented by border lines as shown.

- Denotes one inch spaces on border line of original tracing.

WEST VIRGINIA DEPARTMENT OF MINES
OIL & GAS DIVISION
W E L L R E C O R D

Permit No. Bro-21
Steubenville Quad.

Oil Well

Company	Wheeling Steel Corp.,	CASTING & TUBING	
Address	Wheeling, W. Va.	10	100
Farm	Corporation ACRES 423	8-1/4	295
Location	1/2 Mile east of Ohio River	6-5/8	965
Well No.	106 ELEV. 720	2	1323
District	Cross Creek - Brooke County	No Packer	
Surface & Mineral	Why. Steel Corp., Wheeling, W. Va.	Not cemented	
Commenced	March 25, 1940		
Completed	April 13, 1940		
Shot	4/23/40 - Depth 1314-1324	Coal at: 260' & 345'	
Open Flow	None		
Volume	2000 Ft. per 24 hrs. - estimated		
Oil	5 bbls. 1st 24 hrs.		
Fresh Water	100		
Salt Water	350		

Sand&Gravel	bn	s	95		
Shale	wh	m	95	150	W 100' - large amount
Sand	bn	m	150	180	
Slate&Shells	bk	m	180	260	
Coal	bk	m	260	264	
Slate	bk	m	264	295	
Limestone	wh	h	295	315	
Shale	gr	m	315	345	
Coal	bk	m	345	350	Gas 350 - small amount
Sand	bn	m	350	450	
Slate	dk	m	450	546	
Sand	lt	m	546	615	W 560 - large amount
Slate	bk	m	615	625	
Sand	lt	m	625	654	
Slate	bk	m	654	664	
Lime	wh	h	664	820	
Sand	dk	m	820	900	
Slate	wh	m	900	910	
Sand	lt	m	910	965	W 950
Slate&Shells	bk	m	965	1230	
Sand	lt	m	1230	1255	
Slate	gr	m	1255	1300	
Shale	bk	m	1300	1310	
Sand	m	bn	s	1310	1328 Oil 1314
Slate	bk	m	1328	1338	Water

Well plugged back to 1324' on account of water