

Latitude

Longitude



Topo Location

7.5' Loc. _____ 15' Loc. _____
 _____ (calc.) _____

Company Wheeling Steel Corp

Farm Wheeling Steel Corp #28

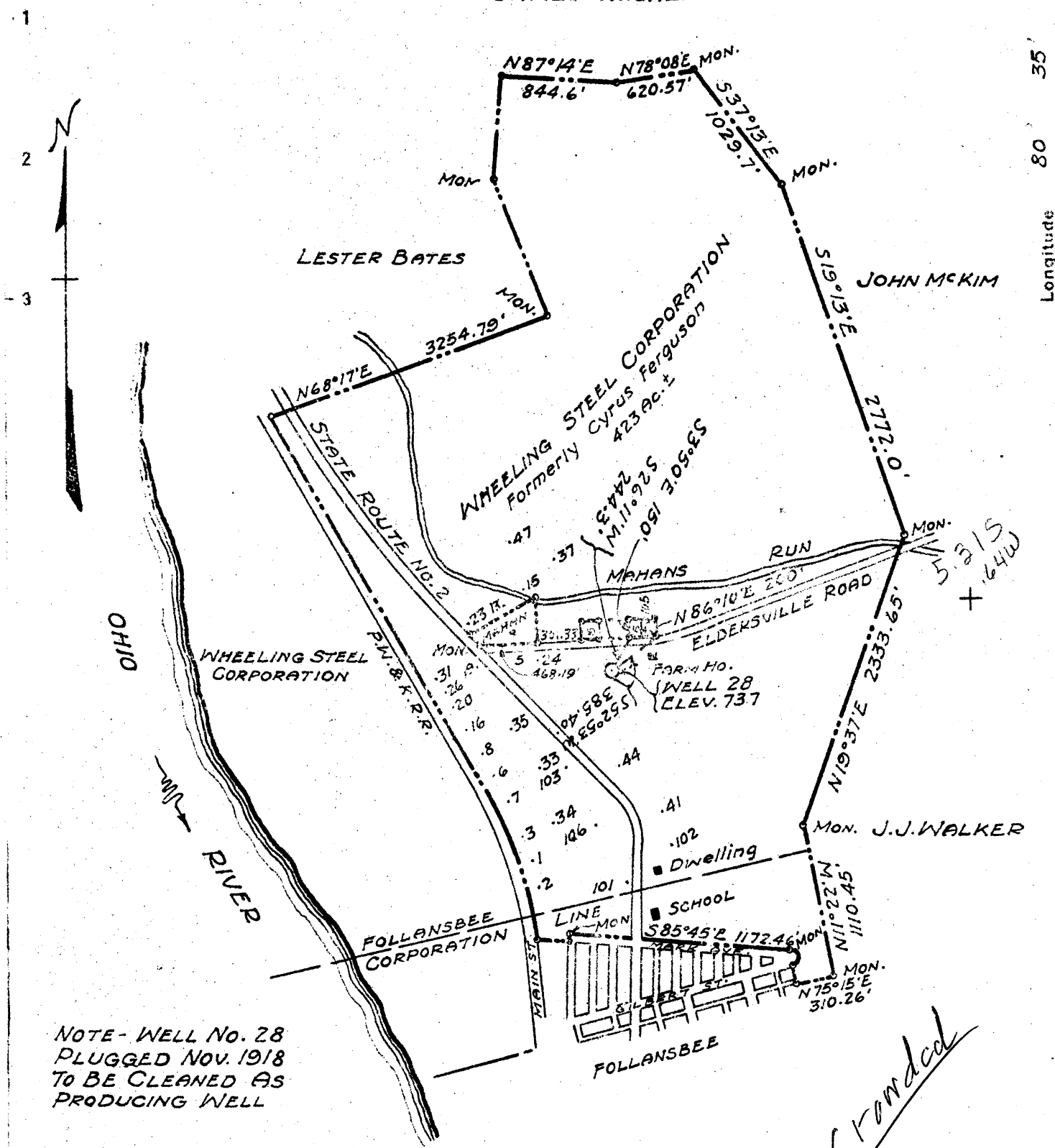
15' Quad _____
(sec.)

7.5' Quad Steubenville East

District Cross Creek

WELL LOCATION PLAT

County 009 Permit 33



NOTE - WELL NO. 28
PLUGGED NOV. 1918
TO BE CLEANED AS
PRODUCING WELL

- New Location
- Drill Deeper
- Abandonment

Company WHEELING STEEL CORPORATION
 Address (GENERAL OFFICE) WHEELING, W. VA.
 Farm WHEELING STEEL CORPORATION (Formerly Cyrus Ferguson)
 Tract _____ Acres 423 Lease No. _____
 Well (Farm) No. 28 Serial No. _____
 Elevation (Spirit Level) 737
 Quadrangle STEBENVILLE
 County BROOKE District CROSS CREEK
 Engineer SIDNEY G. SMITH - C.C. SMITH'S SONS
 Engineer's Registration No. 240
 File No. _____ Drawing No. _____
 Date APRIL 10, 1944 Scale 1" = 1000'

STATE OF WEST VIRGINIA
DEPARTMENT OF MINES
OIL AND GAS DIVISION
CHARLESTON

WELL LOCATION MAP
FILE NO. BRD-33

- + Denotes location of well on United States Topographic Maps, scale 1 to 62,500, latitude and longitude lines being represented by border lines as shown.
- Denotes one inch spaces on border line of original tracing.

WEST VIRGINIA DEPARTMENT OF MINES
OIL & GAS DIVISION
W E L L R E C O R D

Permit No. Bro 33					
Steubenville Quad.					Oil Well
Company	Wheeling Steel Corp.				CASING & TUBING
Address	Wheeling, W.Va.				
Farm	Corp. Acres 423	13	90	90	
Location	1 mile east of Ohio River	8½	382	382	
Well No	28	Elev. 737'	6 5/8	1037	1037
District	Cross Creek	Brooke County	2		1342
Surface	Wheeling Steel Corp. , Wheeling, W.Va.				
Mineral	Same	No liners used			
Commenced	March 13, 1944				
Completed	June 12, 1944				
Date shot	May 5, 1944	Depth 1326	-1341'		
Open flow	No record				No packer
Rock Pressure	No record				Casing cemented-No
Oil	1 bbls. 1st 24 hrs.				No record of coal
Fresh & Salt Water	No record				

This is an old well, drilled in July 1908, and plugged in November 1918.

No records are available as to its production at that time. The well has now been cleaned out, re-cased and put to pumping with an average daily output, so far, of 1 bbl. oil.

Production is from the Berea sand, which at this location has a thickness of 17' or from 1324' to 1341'.

TOTAL DEPTH of this well is 1344'.