

40°22'30"

Latitude

80°35'00"

Longitude

2.465
.54w

Topo Location

7.5' Loc. _____ 15' Loc. _____
 _____ (calc.) _____

Company Wheeling steel Corp

Farm Wheeling Steel Corp #40

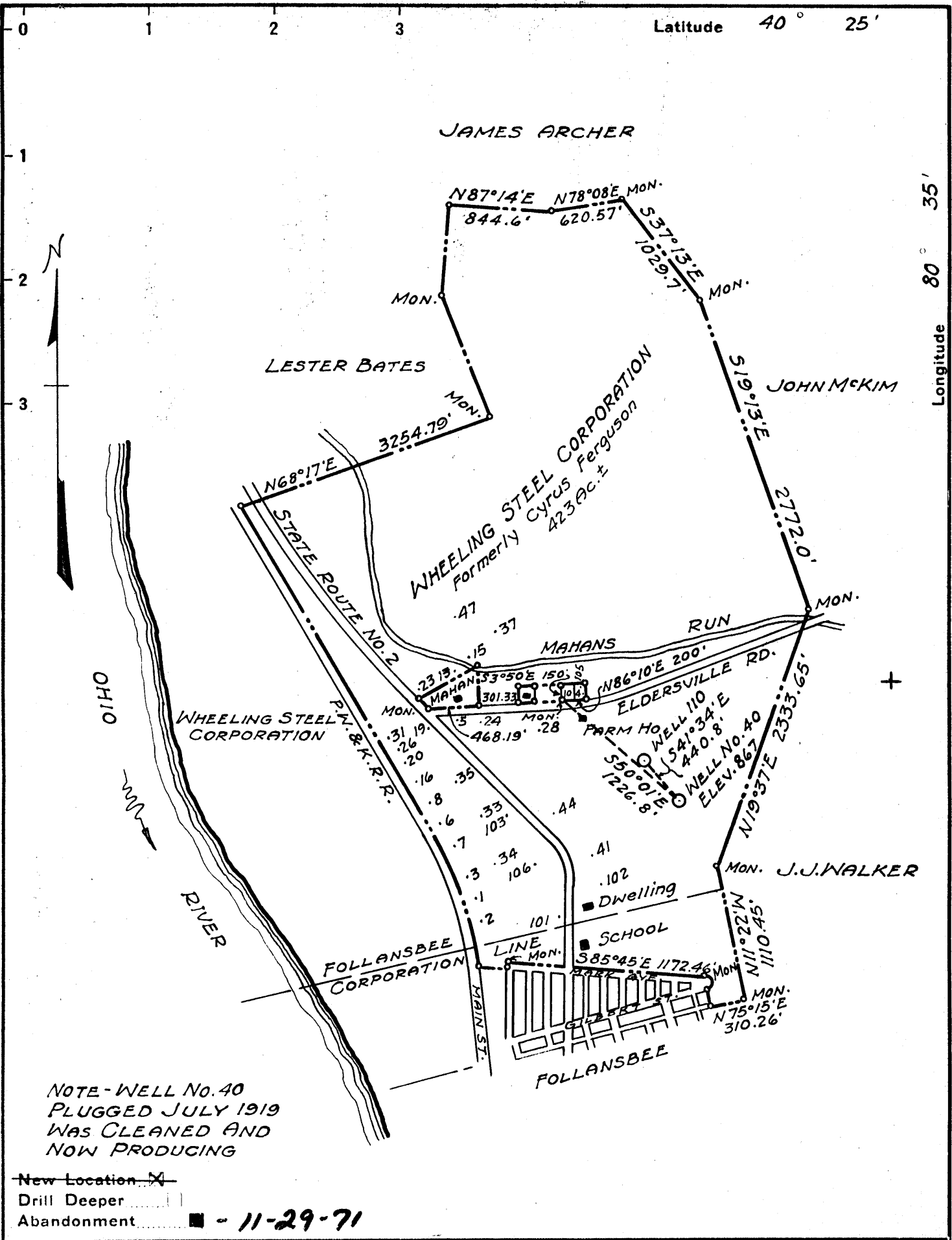
15' Quad _____
(sec.)

7.5' Quad Steubenville East

District Cross Creek

WELL LOCATION PLAT

County 009 Permit 34



NOTE - WELL No. 40
 PLUGGED JULY 1919
 WAS CLEANED AND
 NOW PRODUCING

New Location
 Drill Deeper
 Abandonment - 11-29-71

E.E. Henthorn
 Company ~~WHEELING STEEL CORPORATION~~
 Address ~~Box 42 Sistersville, W. Va. 26175~~
 (GENERAL OFFICE) WHEELING, W. VA.
 Farm ~~WHEELING STEEL CORPORATION~~ Formerly
 Cyrus Ferguson
 Tract Acres 423 Lease No.
 Well (Farm) No. 40 Serial No.
 Elevation (Spirit Level) 867
 Quadrangle STUEBENVILLE C
 County BROOKE District CROSS CREEK
 Engineer SIDNEY C. SMITH - C. C. SMITH'S SONS
 Engineer's Registration No. 240
 File No. Drawing No.
 Date APRIL 10, 1944 Scale 1" = 1000'

STATE OF WEST VIRGINIA
 DEPARTMENT OF MINES
 OIL AND GAS DIVISION
 CHARLESTON

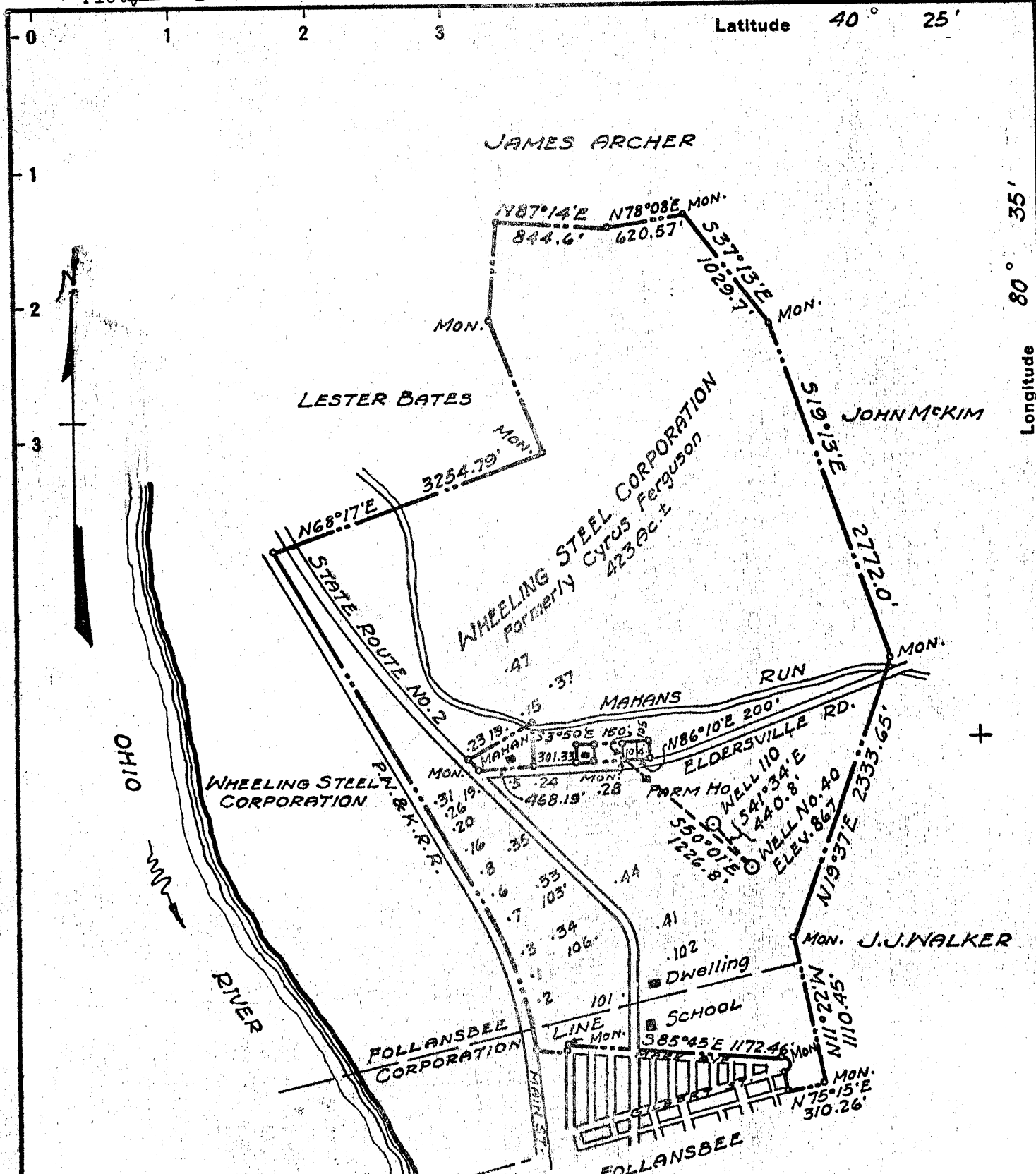
WELL LOCATION MAP

FILE NO. BR0-34-P

Plugging Cancelled - 5-16-92

+ Denotes location of well on United States
 Topographic Maps, scale 1 to 62,500, lat-
 itude and longitude lines being represented
 by border lines as shown.

- Denotes one inch spaces on border line
 of original tracing.



NOTE - WELL No. 40
PLUGGED JULY 1919
WAS CLEANED AND
NOW PRODUCING

New Location
Drill Deeper
Abandonment - 11-29-71

E. E. Henthorn
 Company **WHEELING STEEL CORPORATION**
 Address **Box 42 Sistersville, W. Va. 26115**
(GENERAL OFFICE) WHEELING, W. VA.
 Farm **WHEELING STEEL CORPORATION** (Formerly Cyrus Ferguson)
 Tract _____ Acres **423** Lease No. _____
 Well (Farm) No. **40** Serial No. _____
 Elevation (Spirit Level) **867**
 Quadrangle **STEBENVILLE**
 County **BROOKE** District **CROSS CREEK**
 Engineer **SIDNEY C. SMITH - C. C. SMITH'S SONS**
 Engineer's Registration No. **240**
 File No. _____ Drawing No. _____
 Date **APRIL 10, 1944** Scale **1" = 1000'**

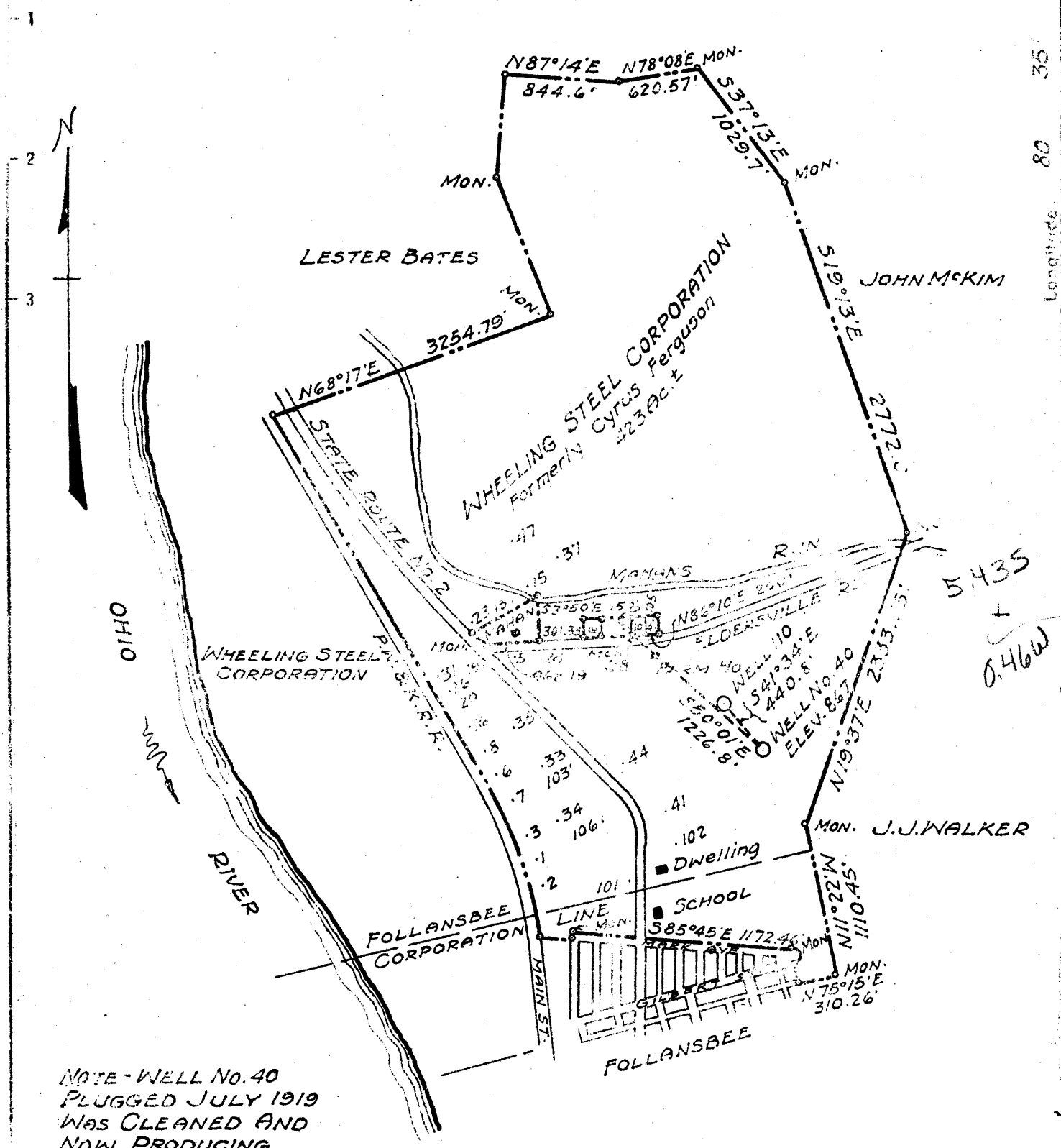
STATE OF WEST VIRGINIA
DEPARTMENT OF MINES
OIL AND GAS DIVISION
CHARLESTON

WELL LOCATION MAP
FILE NO. **BRO-34-P**

+ Denotes location of well on United States Topographic Maps, scale 1 to 62,500, latitude and longitude lines being represented by border lines as shown.

- Denotes one inch spaces on border line of original tracing.

JAMES ARCHER



NOTE - WELL NO. 40
PLUGGED JULY 1919
WAS CLEANED AND
NOW PRODUCING

- New Location
- Drift Deeper
- Abandonment

Company WHEELING STEEL CORPORATION
 Address (GENERAL OFFICE) WHEELING, W. VA.
 Farm WHEELING STEEL CORPORATION (Formerly Cyrus Ferguson)
 Tract _____ Acres 423 Lease No. _____
 Well (Farm) No. 40 Serial No. _____
 Elevation (Spirit Level) 867
 Quadrangle STEBENVILLE
 County BROOKE District CROSS CREEK
 Engineer SIDNEY G. SMITH - G. C. SMITH'S SONS
 Engineer's Registration No. 240
 File No. _____ Drawing No. _____
 Date APRIL 10, 1944 Scale 1" = 1000'

STATE OF WEST VIRGINIA
DEPARTMENT OF MINES
OIL AND GAS DIVISION
CHARLESTON

WELL LOCATION MAP
FILE NO. BRO-34

+ Denotes location of well on United States Topographic Map scale 1 to 62,500, latitude and longitude lines being represented by border lines as shown.
 - Denotes one inch spaces on border line of original tracing

