



Latitude 40° 25'

Longitude 80° 35'

JAMES ARCHER

N. 87° 14' E. 844.6' Mon.  
N. 78° 08' E. 620.57' Mon.

S. 71° 15' E. 510.97' Mon.

LESTER BATES

JOHN MCKIM

S. 68° 17' E. 3254.79' Mon.

WHEELING STEEL CORPORATION  
FORMERLY CYRUS FERGUSON  
423 AC.

5.425  
0.90W

P.W. & K.R.R.  
STATE ROUTE NO. 2

MAHANS RUN

OHIO RIVER

WHEELING STEEL CORPORATION

WELL No. 20  
ELEV. 705

.28 FARM HO.

ELDERSVILLE RD.

J.J. WALKER

FOLLANSBEE CORPORATION

.102 DWELLING

GILBERT ST.  
FOLLANSBEE

PLUGGED 1919  
TO BE CLEANED AS PRODUCING WELL

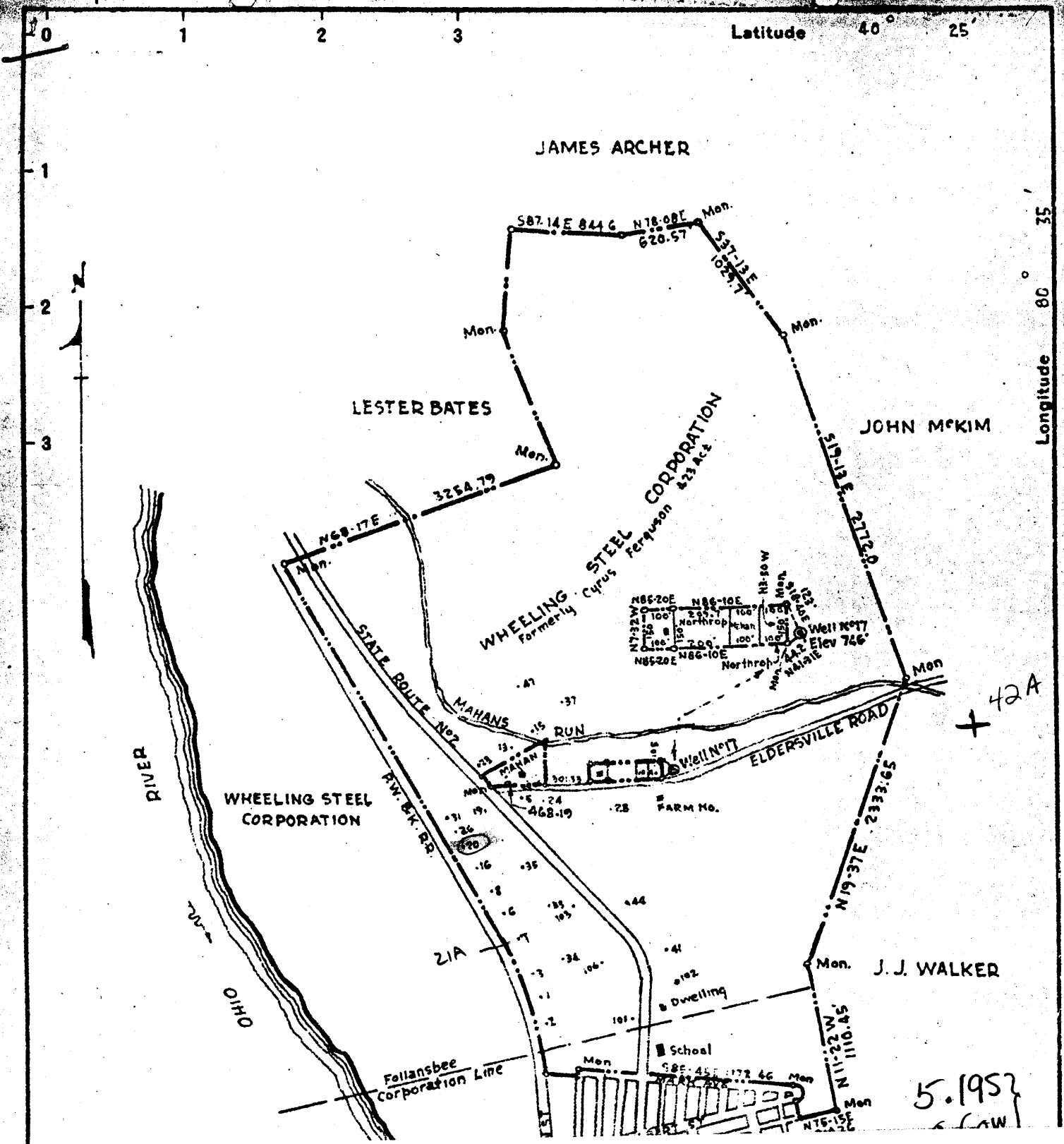
COMPANY WHEELING STEEL CORPORATION  
 ADDRESS (GENERAL OFFICE) WHEELING, W. VA.  
 FARM WHEELING STEEL CORPORATION (FORMERLY CYRUS FERGUSON)  
 TRACT ACRES 423± LEASE No.  
 WELL (FARM) No. 20 SERIAL No.  
 ELEVATION (SPIRIT LEVEL) 705  
 QUADRANGLE STEUBENVILLE C  
 COUNTY BROOKE DISTRICT CROSS CREEK  
 ENGINEER SIDNEY C. SMITH - C.C. SMITH'S SONS  
 ENGINEER'S REGISTRATION No. 240  
 FILE No. DRAWING No.  
 DATE MAR. 27, 1946 SCALE 1" = 1000'

STATE OF WEST VIRGINIA  
 DEPARTMENT OF MINES  
 OIL AND GAS DIVISION  
 CHARLESTON

WELL LOCATION MAP  
 FILE NO. BRO-43

+ Denotes location of well on United States Topographic Maps, scale 1 to 62,500. latitude and longitude lines being represented by border lines as shown.

- Denotes one inch spaces on border line of original tracing.



Wheeling Steel #20

009-18A

5.1957  
66W

(from plat for 42A)



WEST VIRGINIA DEPARTMENT OF MINES  
OIL & GAS DIVISION  
W E L L R E C O R D

Permit No. Bro 43			Oil Well
Steubenville Quad.			CASING & TUBING
Company	Wheeling Steel Corporation		
Address	Wheeling, W.Va.	13	112 92
Farm	Corporation Acres 423	8 $\frac{1}{2}$	out
Location	1/2 Mi. East of Ohio River	6 5/8	952
Well No.	20 Elev. 705		
District	Cross Creek Brooke County		Bottom Hole Packer
Surface	Wheeling Steel Corporation, Wheeling W.Va.		Size 8 $\frac{1}{2}$ x 6 5/8 Depth 952
Mineral	Same		
Commenced	April 13, 1946		No coal
Completed	May 4, 1946		
Not shot			No record
No gas			
Oil	None		
Fresh Water	No record		
Salt Water	No record		

This was an old well drilled in 1908 and plugged in 1919. No formation records are available with exception of the Berea sand which was 19 ft. in thickness and located at 1294' to 1313'

No trouble was experienced in cleaning the well out at this time but as water in large quantities was found in the Berea, well will be re-plugged and abandoned.

m  
Cross Creek District, Brooke County, W. Va.  
By Wheeling Steel Corp., Wheeling, W. Va.  
On 585 acres, along State Highway No. 2 and Ohio River; surface  
and minerals owned by Wheeling Steel Corp., Wheeling, W. Va.

BR-18-A  
see plat 33A

Elevation, 663.70' L.

12½" steel pipe, 60'; 10" casing, 200'; 8¼", 630'; 6⅝", 930'.

Wall packer, 6⅝", at bottom of 6⅝" pipe.

Casing not perforated. No liner used.

Coal was encountered at 195-198½ and 235-240'.

Abandonment reported to Dept. of Mines August 15, 1936.

No record of water. No record of shot.

Oil well. Record to RCT from D.G. Courtney (Dept. of Mines) 5-5-37.

This well was drilled about thirty (30) years ago and no log or drilling record is available. The following information has been secured from sources, considered reliable:

Depth of hole is 1275 ft.; casing used as per data sheet no. 1; three oil sands penetrated; viz, Salt, Big Injun, and Berea. Oil is found in Berea. Salt Sand is about 50 ft. in thickness; Big Injun about 300 ft., and Berea averages 25 ft. Berea Sand light brown, soft, and friable - other sands are darker in color and harder.

Upper and Lower Freeport Coal measures are penetrated at depth points from surface of about 195 ft. and 235 ft., respectively. This coal is not being mined.

Field is pressured with air - 35# to 40# and producing wells are vacuum pumped with gauge registering about 25 in.