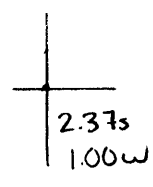


40°22'30"

Latitude

80°35'00"

Longitude



**Topo Location**

7.5' Loc. \_\_\_\_\_ 15' Loc. \_\_\_\_\_  
 \_\_\_\_\_ (calc.) \_\_\_\_\_

Company Wheeling Steel Corp

Farm Wheeling Steel Corp #31

15' Quad \_\_\_\_\_  
(sec.)

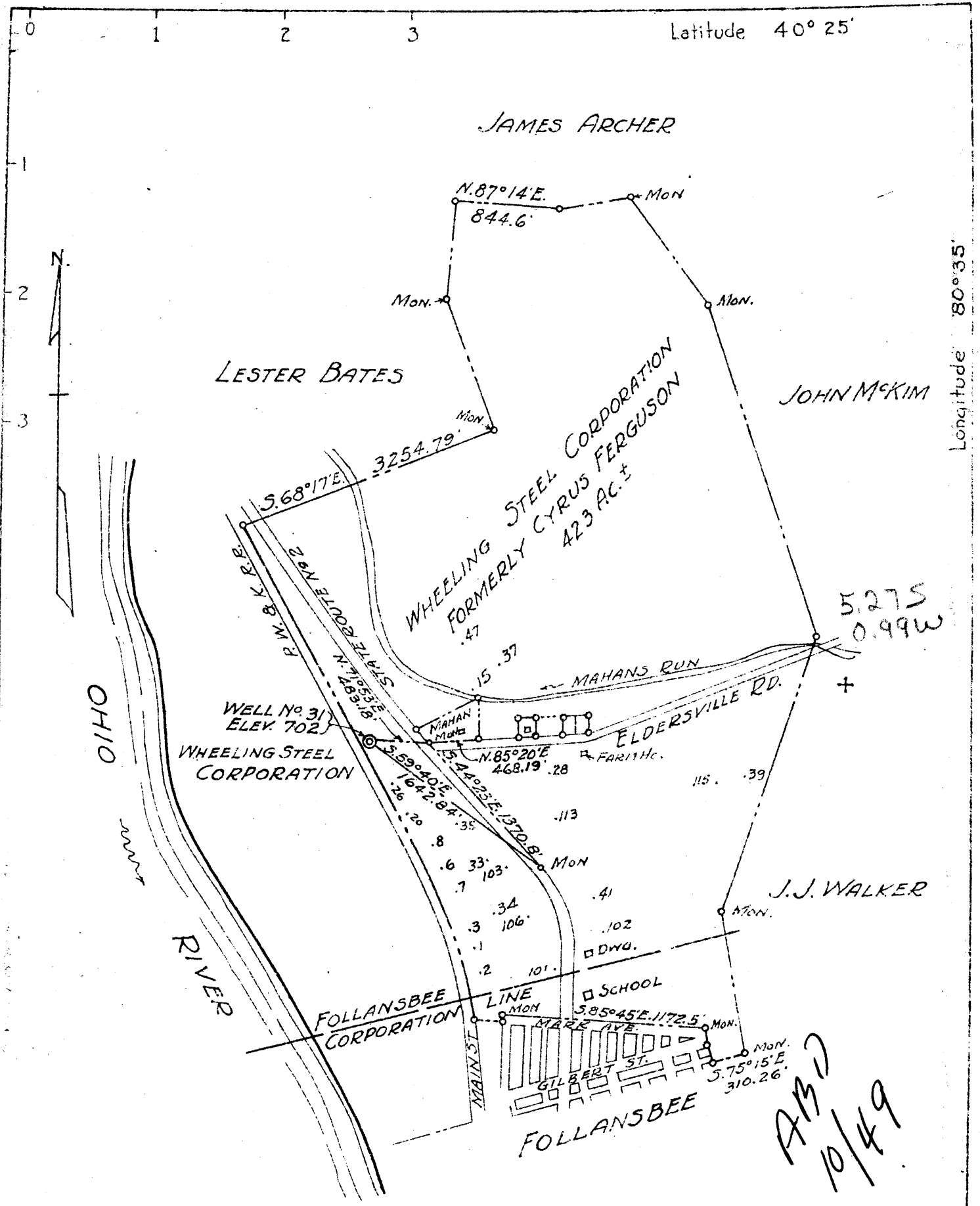
7.5' Quad Steubenville East

District Cross Creek

**WELL LOCATION PLAT**

County 009 Permit 45

2M



PLUGGED 1919  
 TO BE CLEANED AS PRODUCING WELL, REDRILLED.

COMPANY *WHEELING STEEL CORPORATION*  
 ADDRESS (GENERAL OFFICE) *WHEELING, W. VA.*  
 FARM *WHEELING STEEL CORPORATION (FORMERLY CYRUS FERGUSON)*  
 TRACT ACRES *423±* LEASE No.  
 WELL (FARM) No. *31* SERIAL No.  
 ELEVATION (SPIRIT LEVEL) *702*  
 QUADRANGLE *STEBENVILLE*  
 COUNTY *BROOKE* DISTRICT *CROSS CREEK*  
 ENGINEER *SIDNEY C. SMITH - C.C. SMITH'S SONS*  
 ENGINEER'S REGISTRATION No. *240*  
 FILE No. DRAWING No.  
 DATE *MAY 29, 1946* SCALE *1" = 1000'*

STATE OF WEST VIRGINIA  
 DEPARTMENT OF MINES  
 OIL AND GAS DIVISION  
 CHARLESTON

WELL LOCATION MAP  
 FILE NO. **BRO. 45**

- + Denotes location of well on United States Topographic Maps, Scale 1 to 62,500. Latitude and longitude lines being represented by border lines as shown.
- Denotes one inch spaces on border line of original tracing.

WEST VIRGINIA DEPARTMENT OF MINES  
OIL & GAS DIVISION  
W E L L R E C O R D

Permit No. Bro 45				Oil Well
Steubenville Quad.				CASING & TUBING
Company	Wheeling Steel Corporation			
Address	Wheeling, W.Va.	10	104'	104'
Farm	Corporation Acres 423	8½	673	out
Location	½ Mile East of Ohio River	6 5/8	973	973
Well No.	31 Elev. 702'	2	1314	1314
District	Cross Creek Brooke County	No liners used		
Surface	Wheeling Steel Corporation, Wheeling, W.Va.			
Mineral	Same			
Commenced	May 23, 1946	No Packer		
Completed	June 18, 1946			
Date shot	6-10-46 Depth 1298' to 1310'	No record coal		
	with 100 lbs. gelatine			
Volume	No record			
Fresh Water	No record			

This was an old well drilled in 1909 and plugged in 1919.

No trouble was experienced in cleaning the well out at this time. The 10" casing had been left in the well and with 973' of new 6 5/8" pipe, the casing job was completed.

Total depth of well is 1316' with producing sand ( Berea) at 1294' to 1312.

Average daily production of oil, since completion, 4 bbls. with about 1 bbl. water. Very little gas.

Production is helped by use of vacuum pumps.