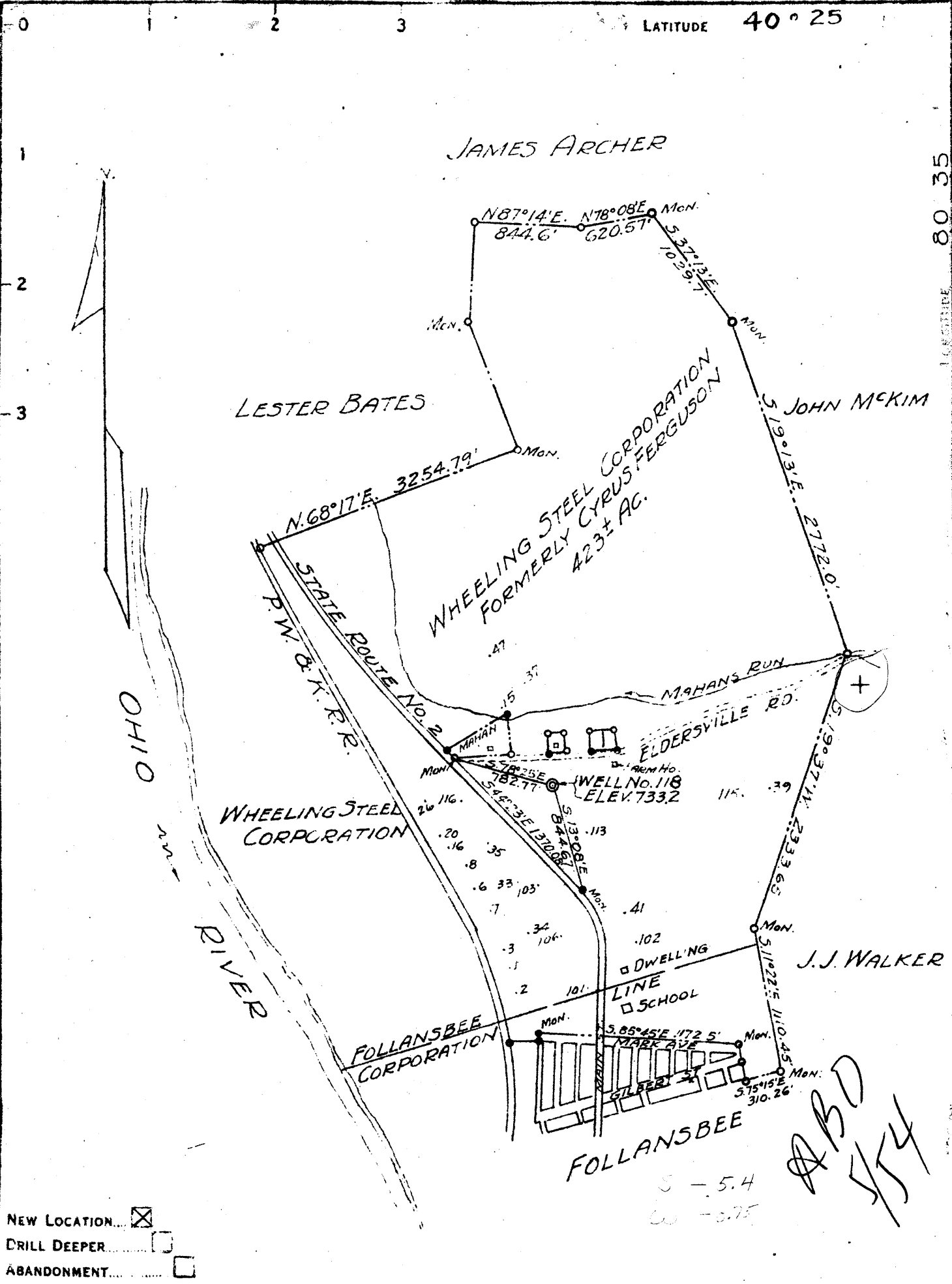


LATITUDE 40° 25



- NEW LOCATION
- DRILL DEEPER
- ABANDONMENT

COMPANY WHEELING STEEL CORPORATION
 ADDRESS (GENERAL OFFICE) WHEELING, W. VA.
 FARM WHEELING STEEL CORPORATION (FORMERLY CYRUS FERGUSON)
 TRACT _____ ACRES 423± LEASE NO. _____
 WELL (FARM) NO. 118 SERIAL NO. _____
 ELEVATION (SPIRIT LEVEL) 733.2
 QUADRANGLE STEUBENVILLE C
 COUNTY BROOKE DISTRICT CROSS CREEK
 ENGINEER GEORGE K. LANG - G.C. SMITH'S SONS ENGRS INC.
 ENGINEER'S REGISTRATION NO. 1590
 FILE NO. _____ DRAWING NO. _____
 DATE MAY 9, 1947 SCALE 1" = 1000'

STATE OF WEST VIRGINIA
 DEPARTMENT OF MINES
 OIL AND GAS DIVISION
 CHARLESTON

WELL LOCATION MAP
 FILE NO. BR0-49

✚ DENOTES LOCATION OF WELL ON UNITED STATES TOPOGRAPHIC MAPS. SCALE 1 TO 62 500. LATITUDE AND LONGITUDE LINES BEING REPRESENTED BY BORDER LINES AS SHOWN.
 - DENOTES ONE INCH SPACES ON BORDER LINE OF ORIGINAL TRACING.

ABD
554

WEST VIRGINIA DEPARTMENT OF MINES
OIL & GAS DIVISION
W E L L R E C O R D

Permit No. Bro 49
Steubenville Quad.

Oil Well
CASING & TUBING

Company	Wheeling Steel Corporation			
Address	Wheeling W.Va.	16	15	
Farm	Corporation Acres 423	10	72	72
Location	1/2 mile E. of Ohio River	8 1/2	310	310
Well No.	118 Elev. 733'	6 5/8	985	985
District	Cross Creek Brooke County			
Surface	Wheeling Steel Corporation, Wheeling, W.Va.	No liners used		
Minerals	Same	No Packer		
Commenced	May 9, 1947	No perf. top or bottom		
Completed	June 18, 1947			
Date shot	6-19-47	Depth 1325 to 1341 Casing not cemented with 40 qts. glycerine		
Open flow	None	Coal at 249'		
Rock Pressure	No Record			
Oil	One (1) bbls. 1st 24 hrs.			
Fresh Water	60'			
Salt Water	568'			

Sand & Gravel Br	S	0	70	
Slate Dk	M	70	105	
Sand Br	S	105	140	
Shale Gr	S	140	190	
Red Rock	H	190	205	
Slate Bk	H	205	249	
Coal Bk	M	249	254	Upper Freeport
Shale Gr	M	254	295	
Slate & Shells Bk	H	295	365	
Sand, Slate & Shells Dk	M	470	568	
Sand Lt	M	568	645	Salt Sand (water)
Slate & Shell Dk	M	645	667	
Big Lime Wh	H	667	807	
Sand, Big Injun Wh	M	807	962	
Slate & Shells Dk	M	962	1232	
Sand Br	M	1232	1265	
Slate & Shells Dk	M	1265	1321	
Sand Wh	S	1321	1341	Berea

Estimated production of this well- 5 bbls. oil per day.
No water present and very little gas.