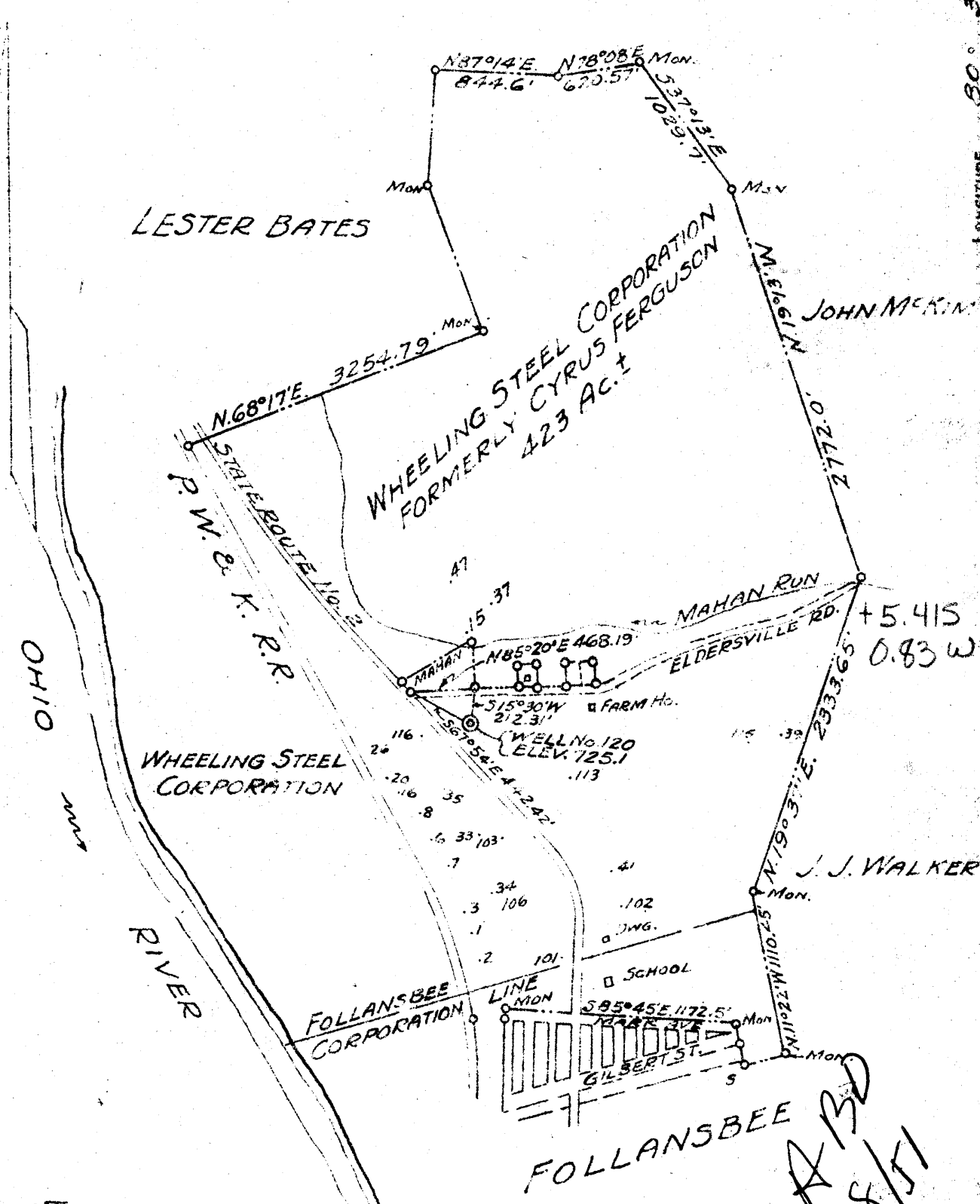


LATITUDE 40° 75'

JAMES ARCHER

LONGITUDE 80° 35'



- NEW LOCATION
- DRILL DEEPER
- ABANDONMENT

COMPANY WHEELING STEEL CORPORATION

ADDRESS (GENERAL OFFICE) WHEELING, W. VA.

FARM WHEELING STEEL CORPORATION (FORMERLY CYRUS FERGUSON)

TRACT _____ ACRES 423± LEASE NO. _____

WELL (FARM) NO. 120 SERIAL NO. _____

ELEVATION (SPIRIT LEVEL) 725.1

QUADRANGLE STEBENVILLE C

COUNTY BROOKE DISTRICT CROSS CREEK

ENGINEER GEORGE K. LANG - C.C. SMITH'S SONS ENGRS. INC.

ENGINEER'S REGISTRATION NO. 1590

FILE NO _____ DRAWING NO. _____

DATE MAY 9, 1947 SCALE 1"=1000'

STATE OF WEST VIRGINIA
DEPARTMENT OF MINES
OIL AND GAS DIVISION
CHARLESTON

WELL LOCATION MAP

FILE No. BRO-52

☒ DENOTES LOCATION OF WELL ON UNITED STATES TOPOGRAPHIC MAPS, SCALE 1 TO 50,000. LATITUDE AND LONGITUDE LINES BEING REPRESENTED BY BORDER LINES AS SHOWN.

— DENOTES ONE INCH SPACES ON BORDER LINE OF ORIGINAL TRACING.

*APD
8/51*

WEST VIRGINIA DEPARTMENT OF MINES
OIL & GAS DIVISION
WELL RECORD

Permit No. Bro 52		Oil Well
Steubenville Quad.		CASING & TUBING
Company	Wheeling Steel Corporation	
Address	Wheeling, W.Va.	16 None
Farm	Corporation Acres 423	13 "
Location	1/2 Mile East of Ohio River	10 42 None
Well No.	120 Elev. 725.1'	8 1/2 258 258
District	Cross Creek Brooke County	6 5/8 962 962
Surface	Wheeling Steel Corp., Wheeling, W.Va.	
Mineral	Same	2 1336 1336
Commenced	April 26, 1948	No liners used
Completed	June 9, 1948	
Date shot	6-10-48 Depth 1316 to 1328' with 40 qts. nitro-glycerine	No Packer
Open flow	No record	Perf. top None
Volume	No record- very little	
Oil	See note	Casing not cemented
Fresh Water	35' and 100'	
Salt Water	562'	Coal at 247' 60"

Sand & Gravel	Br	S	0	100	
Mud	Bl	S	100	115	
Sand	Br	M	115	145	
Shale	Blk	N	145	180	
Red Rock		H	180	208	
Shale	Blk	M	205	238	
Sand	Lt	M	238	247	
Coal	Blk	M	247	252	
Shale	Blk	M	252	294	
Lime	Wh	H	294	312	
Shale	Blk	M	312	356	
Sand	Lt	M	356	462	
Shale	Blk	M	462	562	
Sand	Lt	M	562	631	Salt Sand
Shale	Blk	M	631	666	
Lime	Wh	H	666	807	
Sand	Br	H	807	962	Big Injun
Slate & Shells	Dk	M	962	1230	
Sand	Lt	M	1230	1264	
Slate & Shells	Dk	M	1264	1314	
Berea Sand	Lt	Br	MS	1314	Berea
Shale	Dk	M	1334	1338	

AUG 13 1948



NOTE: Through the application of vacuum, this well is averaging 15 bbls. of oil per day. No water present.