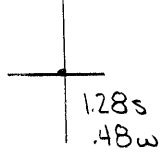


40°15'00"

Latitude

80°35'00"

Longitude



**Topo Location**

7.5' Loc. \_\_\_\_\_ 15' Loc. \_\_\_\_\_  
 \_\_\_\_\_ (calc.) \_\_\_\_\_

Company A H Reben

Farm Floyd Adams #1

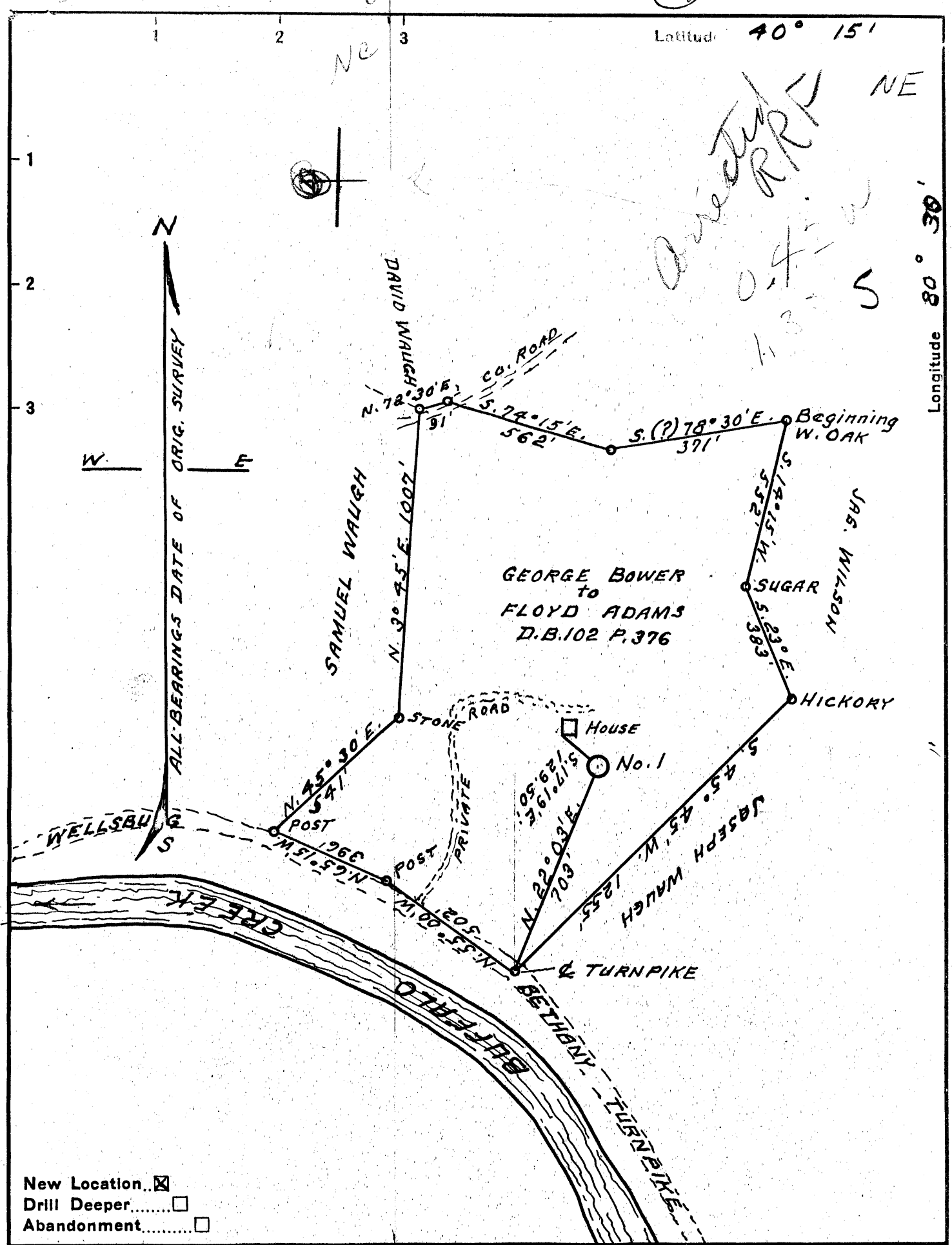
15' Quad \_\_\_\_\_  
(sec.)

7.5' Quad \_\_\_\_\_

District Buffalo

**WELL LOCATION PLAT**

County 009 Permit 69



Latitude  $40^{\circ} 15'$

Longitude  $80^{\circ} 30'$

- New Location
- Drill Deeper
- Abandonment

Company A. H. REBER

Address MOUNDSVILLE, W. VA.

Farm FLOYD ADAMS

Tract \_\_\_\_\_ Acres 46.67 Lease No. \_\_\_\_\_

Well (Farm) No. 1 Serial No. \_\_\_\_\_

Elevation (Spirit Level) 914

Quadrangle WHEELING NC

County BROOKE District BUFFALO

Engineer GORDON W. SAMMONS

Engineer's Registration No. 509

File No. \_\_\_\_\_ Drawing No. \_\_\_\_\_

Date OCT-28-53 Scale 1" = 400'

STATE OF WEST VIRGINIA  
DEPARTMENT OF MINES  
OIL AND GAS DIVISION  
CHARLESTON

**WELL LOCATION MAP**  
FILE NO. BRO-69

+ Denotes location of well on United States Topographic Maps, scale 1 to 62,500, latitude and longitude lines being represented by border lines as shown.

- Denotes one inch spaces on border line of original tracing.

6-0 17 ✓



STATE OF WEST VIRGINIA  
DEPARTMENT OF MINES  
OIL AND GAS DIVISION

Quadrangle WHEELING

WELL RECORD

Oil or Gas Well Oil  
(KIND)

Permit No. Bco-69

Company A. H. Reber Co  
Address Moundsville W. Va.  
Farm Floyd Adams Acres 46  
Location (waters) Buffalo Creek  
Well No. 1 Elev. 914.1'  
District Buffalo County Brook  
The surface of tract is owned in fee by Floyd Adams  
Address Wellsburg W. Va.  
Mineral rights are owned by Floyd Adams  
Address \_\_\_\_\_  
Drilling commenced Feb 15 1954  
Drilling completed July 2 1954  
Date Shot July 3 From 1636 To 1644  
With Skeleton  
Open Flow \_\_\_\_\_ /10ths Water in \_\_\_\_\_ Inch  
\_\_\_\_\_ /10ths Merc. in \_\_\_\_\_ Inch  
Volume \_\_\_\_\_ Cu. Ft.

Casing and Tubing	Used in Drilling	Left in Well	Packers
Size			Kind of Packer
16			
13			
10	<u>70 ft</u>	<u>70</u>	Size of
8 1/2	<u>202</u>	<u>202</u>	Depth set
6 5/8	<u>933</u>	<u>933</u>	
5 3/16	<u>1303</u>	<u>1303</u>	
3			Perf. top
2			Perf. bottom
Liners Used			Perf. top
			Perf. bottom

Rock Pressure \_\_\_\_\_ lbs. \_\_\_\_\_ hrs.  
Oil Showing of oil bbls., 1st 24 hrs.  
Fresh water \_\_\_\_\_ feet \_\_\_\_\_ feet  
Salt water Salt feet \_\_\_\_\_ feet

CASING CEMENTED \_\_\_\_\_ SIZE \_\_\_\_\_ No. Ft. \_\_\_\_\_ Date \_\_\_\_\_

COAL WAS ENCOUNTERED AT \_\_\_\_\_ FEET \_\_\_\_\_ INCHES  
\_\_\_\_\_ FEET \_\_\_\_\_ INCHES FEET \_\_\_\_\_ INCHES  
\_\_\_\_\_ FEET \_\_\_\_\_ INCHES FEET \_\_\_\_\_ INCHES

Formation	Color	Hard or Soft	Top	Bottom	Oil, Gas or Water	Depth Found	Remarks
Clay	yellow	Soft		<u>22 ft</u>			
Clay		Soft	<u>22</u>	<u>64 ft</u>			
Clay	Blue	Soft	<u>64</u>	<u>70</u>			
Sand		Soft	<u>70</u>	<u>83'</u>	water		
Slate	Grey		<u>83'</u>	<u>143'</u>			
lime & shale			<u>143'</u>	<u>290</u>			
Red Rock			<u>290</u>	<u>460</u>			
Black S.			<u>460</u>	<u>570</u>			
Sand			<u>570</u>	<u>645'</u>			
Red AP shale			<u>643</u>	<u>903'</u>			
lime		Hard	<u>930</u>	<u>1003'</u>	water		
Sand		Hard	<u>1005'</u>	<u>1165'</u>			
Slate	Black		<u>1165'</u>	<u>1205'</u>			
lime formation		Hard	<u>1205'</u>	<u>1235'</u>			
Sand		Hard	<u>1235'</u>	<u>1303</u>			
Slate & shale			<u>1303</u>	<u>1631</u>	Showing oil	<u>1632</u>	
Berea Sand			<u>1631</u>	<u>1652</u>	Salt water		