

SURFACE HOLE DEC. LONG: 80.522337
 SURVEYED LONG: 80° 31' 20.4"

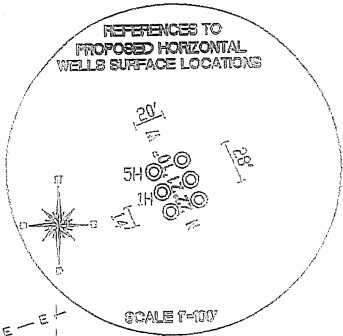
Latitude: 40° 15' 00"

Longitude: 80° 30' 00"

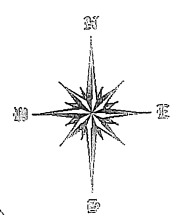
SURFACE HOLE DEC. LAT: 40.231122
 SURVEYED LAT: 40° 13' 52.0"

TOP HOLE (NAD 83)	BOTTOM HOLE (NAD 83)
N) 632158.8 E) 1683059.6 LAT.) 40°13'51.9" LONG.) 80°31'20.3" DEC. LAT.) 40.231086 DEC. LONG.) 80.522317	N) 635784.1 E) 1680315.7 LAT.) 40°14'27.4" LONG.) 80°31'56.3" DEC. LAT.) 40.240950 DEC. LONG.) 80.532292
TOP HOLE (NAD 27)	BOTTOM HOLE (NAD 27)
N) 632121.7 E) 1714493.7 LAT.) 40°13'51.7" LONG.) 80°31'21.1" DEC. LAT.) 40.231015 DEC. LONG.) 80.522525	N) 635746.9 E) 1711749.9 LAT.) 40°14'27.2" LONG.) 80°31'57.0" DEC. LAT.) 40.240880 DEC. LONG.) 80.532499

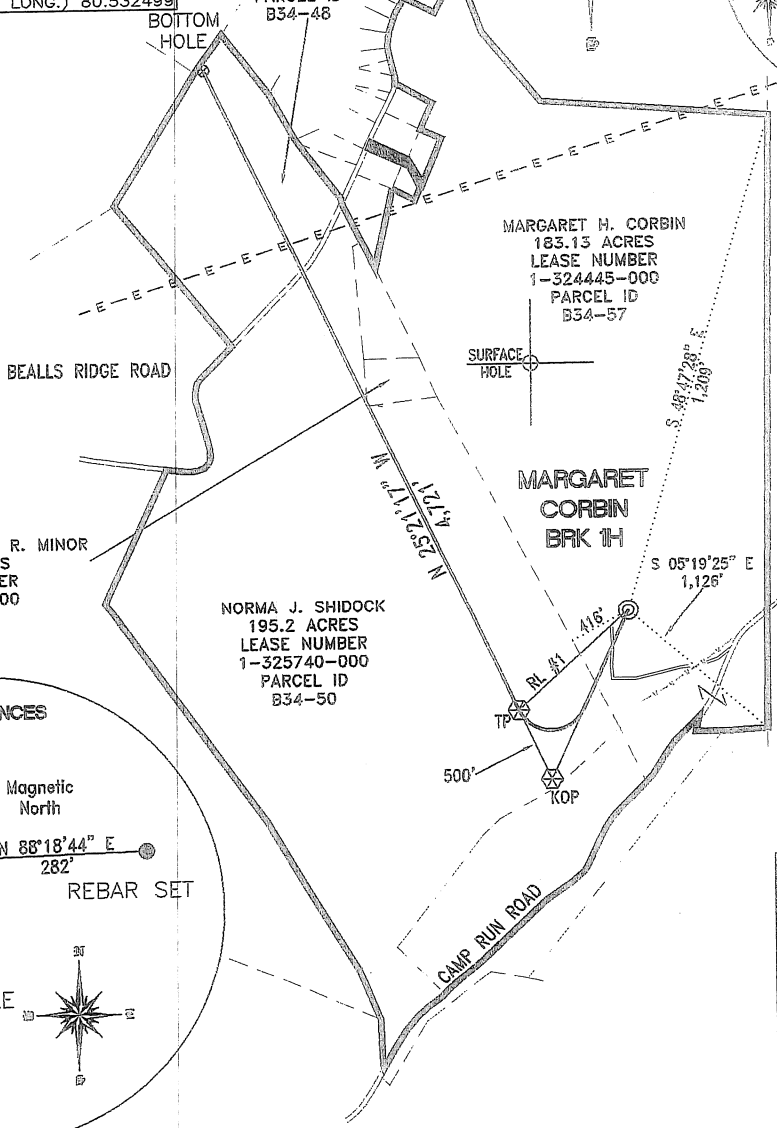
REFERENCE LINES
 RL #1
 S 48°24'49" W 966'



DONALD E. & VERNA M. BRADY
 25 ACRES
 LEASE NUMBER 1-292230-000
 PARCEL ID B34-48



KOP (NAD 83)
N) 631066.1 E) 1682551.5 LAT.) 40°13'41.1" LONG.) 80°31'26.7" DEC. LAT.) 40.228071 DEC. LONG.) 80.524092
KOP (NAD 27)
N) 631028.9 E) 1713985.6 LAT.) 40°13'40.8" LONG.) 80°31'27.5" DEC. LAT.) 40.228000 DEC. LONG.) 80.524300
TP (NAD 83)
N) 631517.9 E) 1682337.3 LAT.) 40°13'45.5" LONG.) 80°31'29.6" DEC. LAT.) 40.229304 DEC. LONG.) 80.524877
TP (NAD 27)
N) 631480.7 E) 1713771.5 LAT.) 40°13'45.2" LONG.) 80°31'30.3" DEC. LAT.) 40.229233 DEC. LONG.) 80.525085

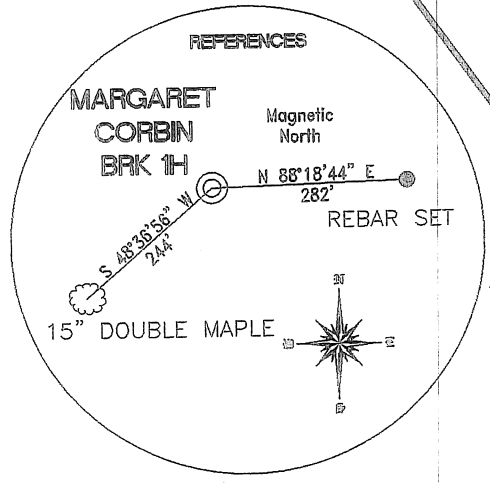


MARGARET H. CORBIN
 183.13 ACRES
 LEASE NUMBER 1-324445-000
 PARCEL ID B34-57

MARGARET CORBIN
 BRK 1H

NORMA J. SHIDOCK
 195.2 ACRES
 LEASE NUMBER 1-325740-000
 PARCEL ID B34-50

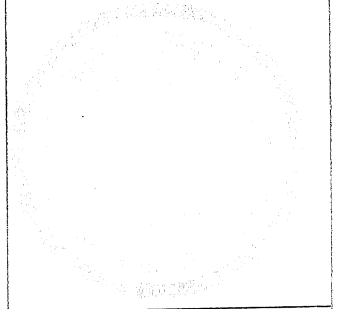
KEVIN L. & RULETTA R. MINOR
 5.917 ACRES
 LEASE NUMBER 1-325741-000
 PARCEL ID B34-50.1



REFERENCE NOTES
 Boundaries as shown taken from deeds, tax maps and field locations. A full boundary survey is not expressed nor implied. All bearings are based on true north. Ownership taken from public records Brooke County, West Virginia JANUARY 2011
 State Plane Coordinates & NAD 83 Lat/Long by differential submeter mapping grade GPS
 Drafted by: E.A.M.

FILE #: CHE 037
 DRAWING #: 1811
 SCALE: 1" = 1200'
 MINIMUM DEGREE OF ACCURACY: 1/200
 PROVEN SOURCE SUBMETER MAPPING OF ELEVATION: GRADE GPS

I, THE UNDERSIGNED, HEREBY CERTIFY THAT THIS PLAT IS CORRECT TO THE BEST OF MY KNOWLEDGE AND BELIEF AND SHOWS ALL THE INFORMATION REQUIRED BY LAW AND THE REGULATIONS ISSUED AND PRESCRIBED BY THE DEPARTMENT OF ENVIRONMENTAL PROTECTION.
 Signed:
 L.L.S. #2124: Ernest J. Benchek III



(+) DENOTES LOCATION OF WELL ON UNITED STATES TOPOGRAPHIC MAPS
 WVDEP
OFFICE OF OIL & GAS
 601 57TH STREET
 CHARLESTON, WV 25304
 Well Type: Oil Waste Diposal Production Deep
 Gas Liquid Injection Storage Shallow
 WATERSHED: UPPER OHIO SOUTH
 COUNTY/DISTRICT: BROOKE / BUFFALO
 SURFACE OWNER: MARGARET H. CORBIN
 OIL & GAS ROYALTY OWNER: MARGARET H. CORBIN
 LEASE NUMBERS: _____
 TARGET FORMATION: MARCELLUS
 WELL OPERATOR: CHESAPEAKE APPALACHIA, LLC.
 ADDRESS: PO BOX 18496
 CITY: OKLAHOMA CITY STATE: OK ZIP CODE: 73154-0496

DATE: OCTOBER 14, 2011
 OPERATOR'S WELL #: MARGARET CORBIN BRK 1H
 API WELL #: 47 09 001264
 STATE COUNTY PERMIT
 ELEVATION: 1,150'
 QUADRANGLE: BETHANY, WV.
 ACREAGE: 183.13 +/-
 ACREAGE: 403.33 +/-
 DRILL CONVERT DRILL DEEPER REDRILL FRACTURE OR STIMULATE
 PLUG OFF FORMATION PERFORATE NEW FORMATION PLUG & ABANDON
 CLEAN OUT & REPLUG OTHER CHANGE (SPECIFY): _____
 ESTIMATED DEPTH: TVD: 6,065 TMD: 11,243
 DESIGNATED AGENT: ERIC GILLESPIE
 ADDRESS: PO BOX 6070
 CITY: CHARLESTON STATE: WV ZIP CODE: 25362

