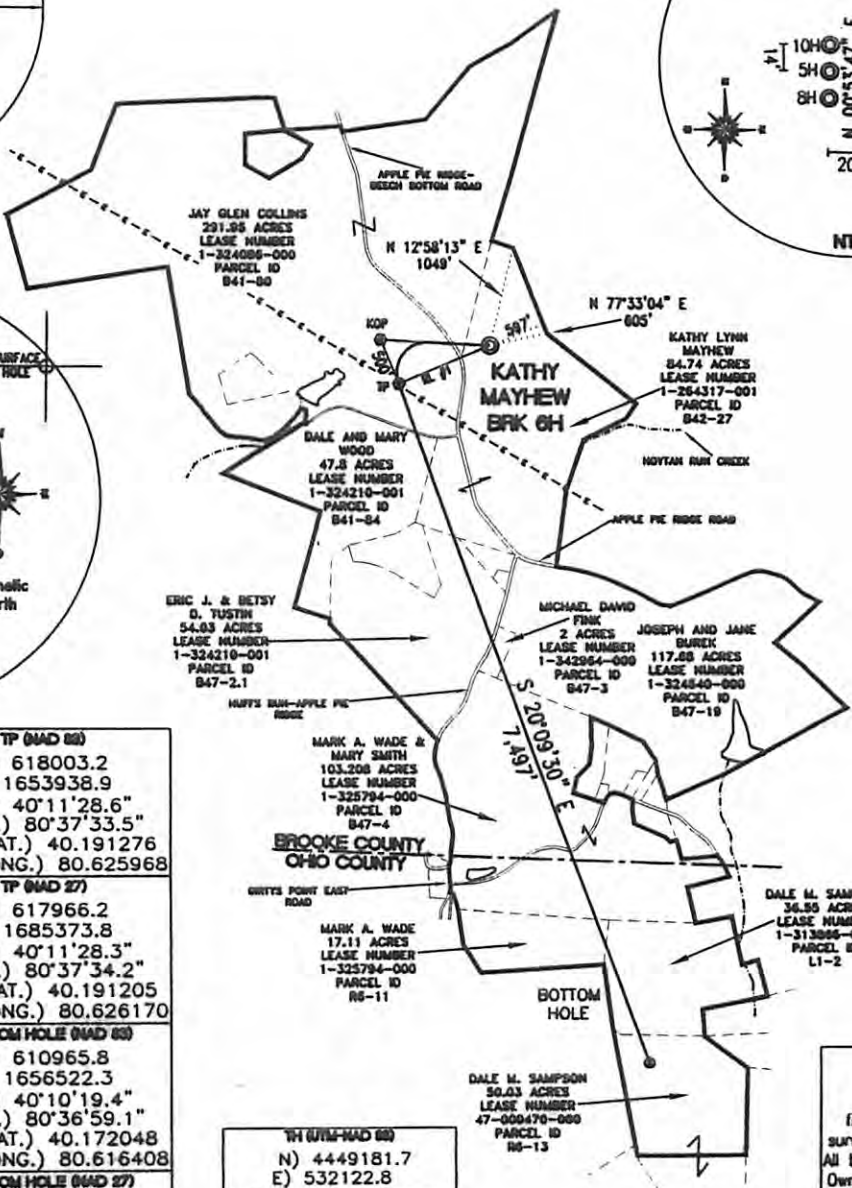
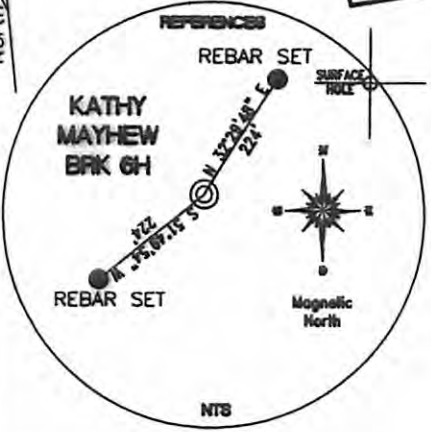
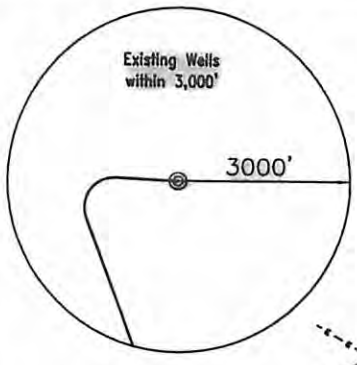
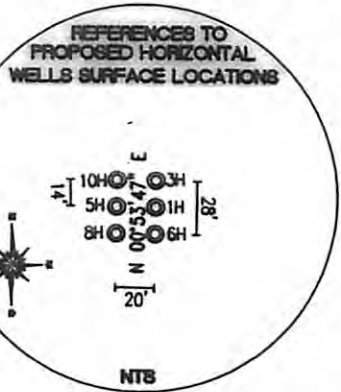


REFERENCE LINES
RL #1
N 66°52'09" E 1,024'



TH (NAD 83) N) 618405.4 E) 1654880.5 LAT.) 40°11'32.7" LONG.) 80°37'21.4" DEC. LAT.) 40.192412 DEC. LONG.) 80.622616	TP (NAD 83) N) 618003.2 E) 1653938.9 LAT.) 40°11'28.6" LONG.) 80°37'33.5" DEC. LAT.) 40.191276 DEC. LONG.) 80.625968
TH (NAD 27) N) 618368.4 E) 1686315.4 LAT.) 40°11'32.4" LONG.) 80°37'22.1" DEC. LAT.) 40.192341 DEC. LONG.) 80.622818	TP (NAD 27) N) 617966.2 E) 1685373.8 LAT.) 40°11'28.3" LONG.) 80°37'34.2" DEC. LAT.) 40.191205 DEC. LONG.) 80.626170
KCP (NAD 83) N) 618463.0 E) 1653742.5 LAT.) 40°11'33.1" LONG.) 80°37'36.1" DEC. LAT.) 40.192531 DEC. LONG.) 80.626692	BOTTOM HOLE (NAD 83) N) 610965.8 E) 1656522.3 LAT.) 40°10'19.4" LONG.) 80°36'59.1" DEC. LAT.) 40.172048 DEC. LONG.) 80.616408
KCP (NAD 27) N) 618426.0 E) 1685177.4 LAT.) 40°11'32.9" LONG.) 80°37'36.8" DEC. LAT.) 40.192460 DEC. LONG.) 80.626894	BOTTOM HOLE (NAD 27) N) 610928.8 E) 1687957.2 LAT.) 40°10'19.1" LONG.) 80°36'59.8" DEC. LAT.) 40.171976 DEC. LONG.) 80.616611

TH (UTM-NAD 83)
N) 4449181.7
E) 532122.8
BOTTOM HOLE (UTM-NAD 83)
N) 4446923.7
E) 532660.9

REFERENCE NOTES
Boundaries as shown taken from deeds, tax maps and field locations. A full boundary survey is not expressed nor implied. All bearings are based on true north. Ownership taken from public records Brooke County, West Virginia MARCH 2011
State Plane Coordinates & NAD 83 Lat/Long by differential submeter mapping grade GPS
Drafted by: E.A.M.

FILE #: CHE 059
DRAWING #: 1879
SCALE: 1"=2000'
MINIMUM DEGREE OF ACCURACY: 1/200
PROVEN SOURCE SUBMETER MAPPING OF ELEVATION: GRADE GPS

I, THE UNDERSIGNED, HEREBY CERTIFY THAT THIS PLAT IS CORRECT TO THE BEST OF MY KNOWLEDGE AND BELIEF AND SHOWS ALL THE INFORMATION REQUIRED BY LAW AND THE REGULATIONS ISSUED AND PRESCRIBED BY THE DEPARTMENT OF ENVIRONMENTAL PROTECTION.
Signed: *[Signature]*
L.L.S. #2124 : Ernest J. Benchek III



(+) DENOTES LOCATION OF WELL ON UNITED STATES TOPOGRAPHIC MAPS WVDEP
OFFICE OF OIL & GAS
601 57TH STREET
CHARLESTON, WV 25304

Well Type: Oil Waste Disposal Production Deep
 Gas Liquid Injection Storage Shallow

WATERSHED: UPPER OHIO SOUTH
COUNTY/DISTRICT: BROOKE/BUFFALO
SURFACE OWNER: KATHY LYNN MAYHEW
OIL & GAS ROYALTY OWNER: KATHY LYNN MAYHEW
LEASE NUMBERS:

DATE: FEBRUARY 7, 2012
OPERATOR'S WELL #: KATHY MAYHEW BRK 6H
API WELL #: 47 09 00131H6A
STATE COUNTY PERMIT
CANCELLED
ELEVATION: 1,280'
QUADRANGLE: BETHANY WV.
ACREAGE: 84.74 +/-
ACREAGE: 805.098 +/-

TARGET FORMATION: MARCELLUS
WELL OPERATOR: CHESAPEAKE APPALACHIA, LLC.
ADDRESS: PO BOX 18496
CITY: OKLAHOMA CITY STATE: OK ZIP CODE: 73154-0496

ESTIMATED DEPTH: TVD: 6024' TMD: 13957'
DESIGNATED AGENT: ERIC B. GILLESPIE
ADDRESS: PO Box 6070
CITY: CHARLESTON STATE: WV ZIP CODE: 25362

DRILL CONVERT DRILL DEEPER REDRILL FRACTURE OR STIMULATE
PLUG OFF FORMATION PERFORATE NEW FORMATION PLUG & ABANDON
CLEAN OUT & REPLUG OTHER CHANGE (SPECIFY):

06/27/2014