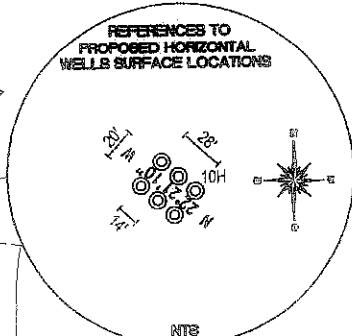
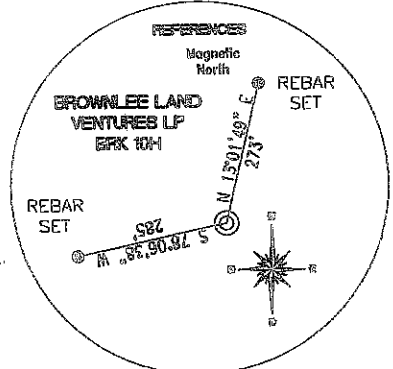
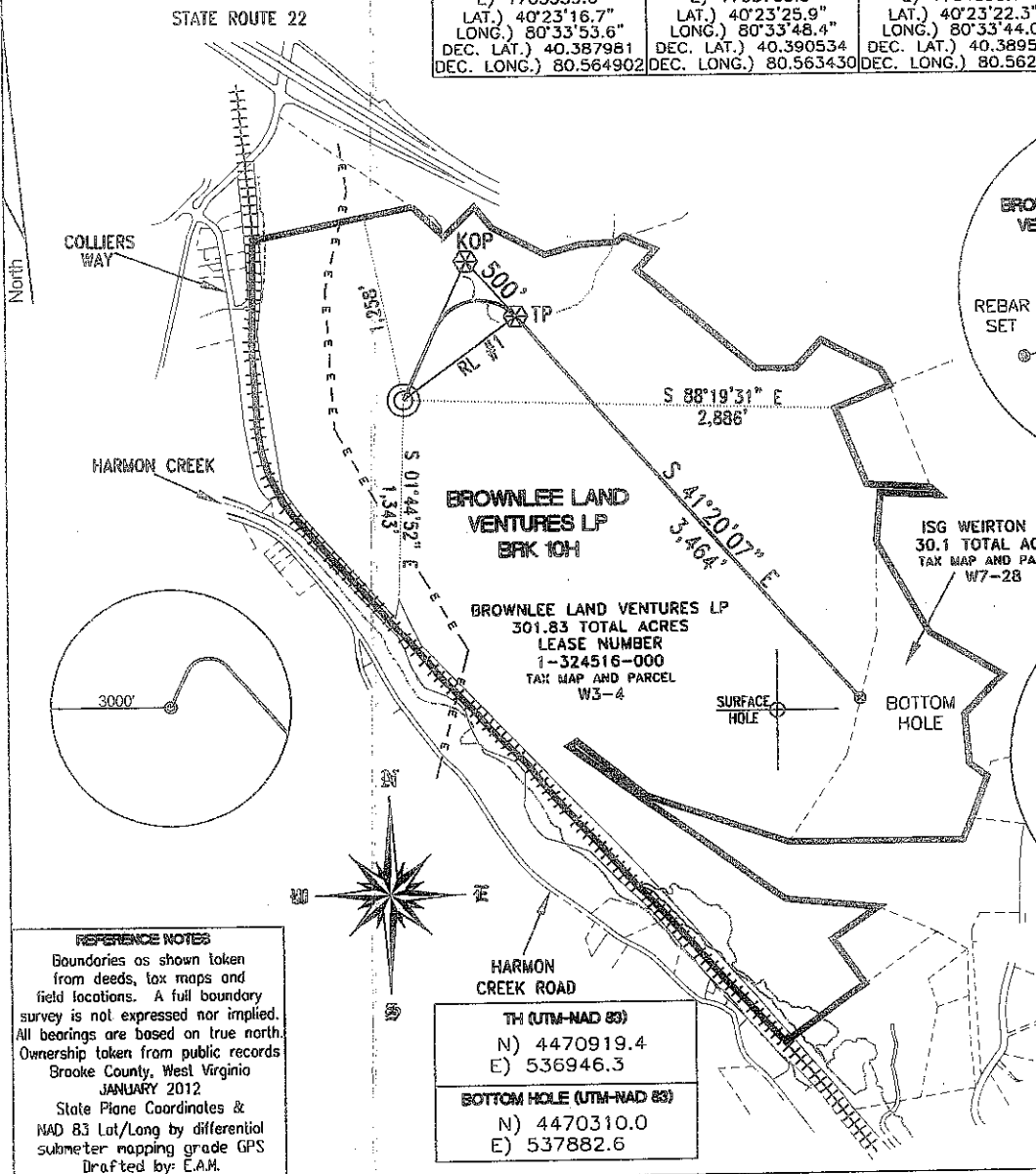


TOP HOLE (NAD 83) N) 689475.8 E) 1671905.3 LAT.) 40°23'17.0" LONG.) 80°33'52.9" DEC. LAT.) 40.388050 DEC. LONG.) 80.564695	KOP (NAD 83) N) 690400.9 E) 1672326.2 LAT.) 40°23'26.2" LONG.) 80°33'47.6" DEC. LAT.) 40.390603 DEC. LONG.) 80.563224	TP (NAD 83) N) 690025.5 E) 1672656.4 LAT.) 40°23'22.5" LONG.) 80°33'43.3" DEC. LAT.) 40.389583 DEC. LONG.) 80.562023	BOTTOM HOLE (NAD 83) N) 687424.4 E) 1674944.4 LAT.) 40°22'57.1" LONG.) 80°33'13.3" DEC. LAT.) 40.382518 DEC. LONG.) 80.553700
TOP HOLE (NAD 27) N) 689438.7 E) 1703339.6 LAT.) 40°23'16.7" LONG.) 80°33'53.6" DEC. LAT.) 40.387981 DEC. LONG.) 80.564902	KOP (NAD 27) N) 690363.8 E) 1703760.5 LAT.) 40°23'25.9" LONG.) 80°33'48.4" DEC. LAT.) 40.390534 DEC. LONG.) 80.563430	TP (NAD 27) N) 689988.4 E) 1704090.7 LAT.) 40°23'22.3" LONG.) 80°33'44.0" DEC. LAT.) 40.389515 DEC. LONG.) 80.562229	BOTTOM HOLE (NAD 27) N) 687387.3 E) 1706378.6 LAT.) 40°22'56.8" LONG.) 80°33'14.1" DEC. LAT.) 40.382449 DEC. LONG.) 80.553908



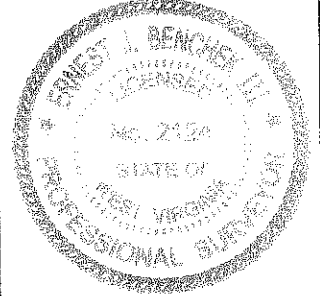
REFERENCE NOTES
 Boundaries as shown taken from deeds, tax maps and field locations. A full boundary survey is not expressed nor implied. All bearings are based on true north. Ownership taken from public records Brooke County, West Virginia JANUARY 2012
 State Plane Coordinates & NAD 83 Lat/Long by differential submeter mapping grade GPS
 Drafted by: E.A.M.

TH (UTM-NAD 83) N) 4470919.4 E) 536946.3
BOTTOM HOLE (UTM-NAD 83) N) 4470310.0 E) 537882.6

REFERENCE LINES
 RL #1
 N 53°47'54" E 931'

FILE #: CHE 100
 DRAWING #: 1984
 SCALE: 1" = 1200'
 MINIMUM DEGREE OF ACCURACY: 1/200
 PROVEN SOURCE OF ELEVATION: SUBMETER MAPPING GRADE GPS

I, THE UNDERSIGNED, HEREBY CERTIFY THAT THIS PLAT IS CORRECT TO THE BEST OF MY KNOWLEDGE AND BELIEF AND SHOWS ALL THE INFORMATION REQUIRED BY LAW AND THE REGULATIONS ISSUED AND PRESCRIBED BY THE DEPARTMENT OF ENVIRONMENTAL PROTECTION.
 Signed: _____
 L.L.S. #2124: Ernest J. Benchek III



(+) DENOTES LOCATION OF WELL ON UNITED STATES TOPOGRAPHIC MAPS
 WVDEP OFFICE OF OIL & GAS
 601 57TH STREET
 CHARLESTON, WV 25304

DATE: FEBRUARY 22, 2012
 OPERATOR'S WELL #: BROWNLEE LAND VENTURES LP BRK 10H
 API WELL #: 47 09 00137HQA
 STATE COUNTY PERMIT

Well Type: Oil Waste Diposal Production Deep
 Gas Liquid Injection Storage Shallow

WATERSHED: UPPER OHIO SOUTH ELEVATION: 990'
 COUNTY/DISTRICT: BROOKE / BUFFALO QUADRANGLE: WEIRTON, WV.
 SURFACE OWNER: BROWNLEE LAND VENTURES LP ACREAGE: 301.83 +/-
 OIL & GAS ROYALTY OWNER: BROWNLEE LAND VENTURES LP ACREAGE: 301.83 +/-
 LEASE NUMBERS: _____

DRILL CONVERT DRILL DEEPER REDRILL FRACTURE OR STIMULATE
 PLUG OFF FORMATION PERFORATE NEW FORMATION PLUG & ABANDON
 CLEAN OUT & REPLUG OTHER CHANGE (SPECIFY): _____

TARGET FORMATION: MARCELLUS ESTIMATED DEPTH: TVD: 5,210' TMD: 9,106'
 WELL OPERATOR: CHESAPEAKE APPALACHIA, LLC. DESIGNATED AGENT: ERIC GILLESPIE
 ADDRESS: PO BOX 18496 ADDRESS: PO BOX 6070
 CITY: OKLAHOMA CITY STATE: OK ZIP CODE: 73154-0496 CITY: CHARLESTON STATE: WV ZIP CODE: 25362

