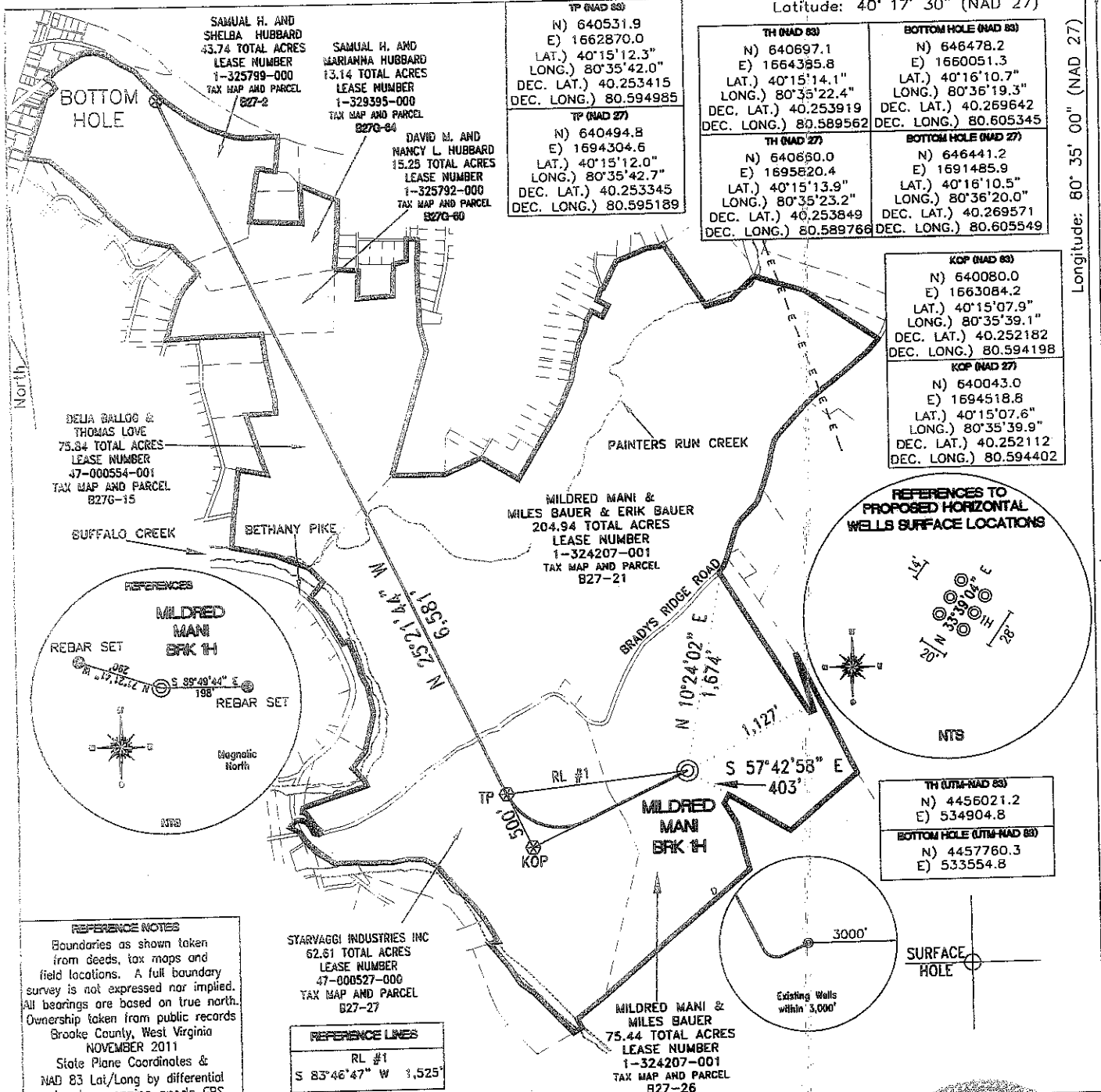


SURFACE HOLE DEC. LONG: 80,589766
 SURVEYED LONG: 80° 35' 23.2"

Latitude: 40° 17' 30" (NAD 27)

Longitude: 80° 35' 00" (NAD 27)



SAMUAL H. AND SHELBA HUBBARD
 43.74 TOTAL ACRES
 LEASE NUMBER 1-325799-000
 TAX MAP AND PARCEL B27-2

SAMUAL H. AND MARIANNA HUBBARD
 13.14 TOTAL ACRES
 LEASE NUMBER 1-329395-000
 TAX MAP AND PARCEL B27G-64

DAVID M. AND NANCY L. HUBBARD
 15.25 TOTAL ACRES
 LEASE NUMBER 1-325792-000
 TAX MAP AND PARCEL B27G-60

TP (NAD 83)
 N) 640531.9
 E) 1662870.0
 LAT.) 40°15'12.3"
 LONG.) 80°35'42.0"
 DEC. LAT.) 40.253415
 DEC. LONG.) 80.594985

TP (NAD 27)
 N) 640494.8
 E) 1694304.6
 LAT.) 40°15'12.0"
 LONG.) 80°35'42.7"
 DEC. LAT.) 40.253345
 DEC. LONG.) 80.595189

TH (NAD 83)
 N) 640697.1
 E) 1664385.8
 LAT.) 40°15'14.1"
 LONG.) 80°35'22.4"
 DEC. LAT.) 40.253919
 DEC. LONG.) 80.589562

BOTTOM HOLE (NAD 83)
 N) 646478.2
 E) 1660051.3
 LAT.) 40°16'10.7"
 LONG.) 80°36'19.3"
 DEC. LAT.) 40.269642
 DEC. LONG.) 80.605345

TH (NAD 27)
 N) 640690.0
 E) 1695820.4
 LAT.) 40°15'13.9"
 LONG.) 80°35'23.2"
 DEC. LAT.) 40.253849
 DEC. LONG.) 80.589766

BOTTOM HOLE (NAD 27)
 N) 646441.2
 E) 1691485.9
 LAT.) 40°16'10.5"
 LONG.) 80°36'20.0"
 DEC. LAT.) 40.269571
 DEC. LONG.) 80.605549

KOP (NAD 83)
 N) 640080.0
 E) 1663084.2
 LAT.) 40°15'07.9"
 LONG.) 80°35'39.1"
 DEC. LAT.) 40.252182
 DEC. LONG.) 80.594198

KOP (NAD 27)
 N) 640043.0
 E) 1694518.8
 LAT.) 40°15'07.6"
 LONG.) 80°35'39.9"
 DEC. LAT.) 40.252112
 DEC. LONG.) 80.594402

MILDRED MANI & MILES BAUER & ERIK BAUER
 204.94 TOTAL ACRES
 LEASE NUMBER 1-324207-001
 TAX MAP AND PARCEL B27-21

MILDRED MANI & MILES BAUER
 75.44 TOTAL ACRES
 LEASE NUMBER 1-324207-001
 TAX MAP AND PARCEL B27-26

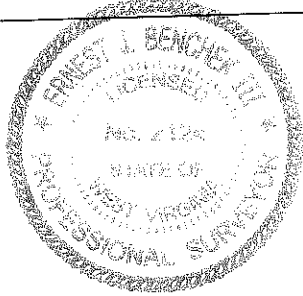
STARVAGGI INDUSTRIES INC
 62.61 TOTAL ACRES
 LEASE NUMBER 47-000527-000
 TAX MAP AND PARCEL B27-27

REFERENCE LINES
 RL #1
 S 83°46'47" W 1,525'

REFERENCE NOTES
 Boundaries as shown taken from deeds, tax maps and field locations. A full boundary survey is not expressed nor implied. All bearings are based on true north. Ownership taken from public records Brooke County, West Virginia NOVEMBER 2011 State Plane Coordinates & NAD 83 Lat/Long by differential submeter mapping grade GPS Drafted by: E.A.M.

FILE #: CHE 045
 DRAWING #: 1909
 SCALE: 1"=1200'
 MINIMUM DEGREE OF ACCURACY: 1/200
 PROVEN SOURCE SUBMETER MAPPING OF ELEVATION: GRADE GPS

I, THE UNDERSIGNED, HEREBY CERTIFY THAT THIS PLAT IS CORRECT TO THE BEST OF MY KNOWLEDGE AND BELIEF AND SHOWS ALL THE INFORMATION REQUIRED BY LAW AND THE REGULATIONS ISSUED AND PRESCRIBED BY THE DEPARTMENT OF ENVIRONMENTAL PROTECTION.
 Signed:
 L.L.S. #2124: Ernest J. Benchek III



(+) DENOTES LOCATION OF WELL ON UNITED STATES TOPOGRAPHIC MAPS WVDEP
 OFFICE OF OIL & GAS
 601 57TH STREET
 CHARLESTON, WV 25304

Well Type: Oil Waste Disposal Production Deep
 Gas Liquid Injection Storage Shallow

WATERSHED: UPPER OHIO SOUTH
 COUNTY/DISTRICT: BROOKE/BUFFALO

DATE: FEBRUARY 10, 2012
 OPERATOR'S WELL #: MILDRED MANI BRK 1H
 API WELL #: 47 09 0142 HGA
 STATE COUNTY PERMIT

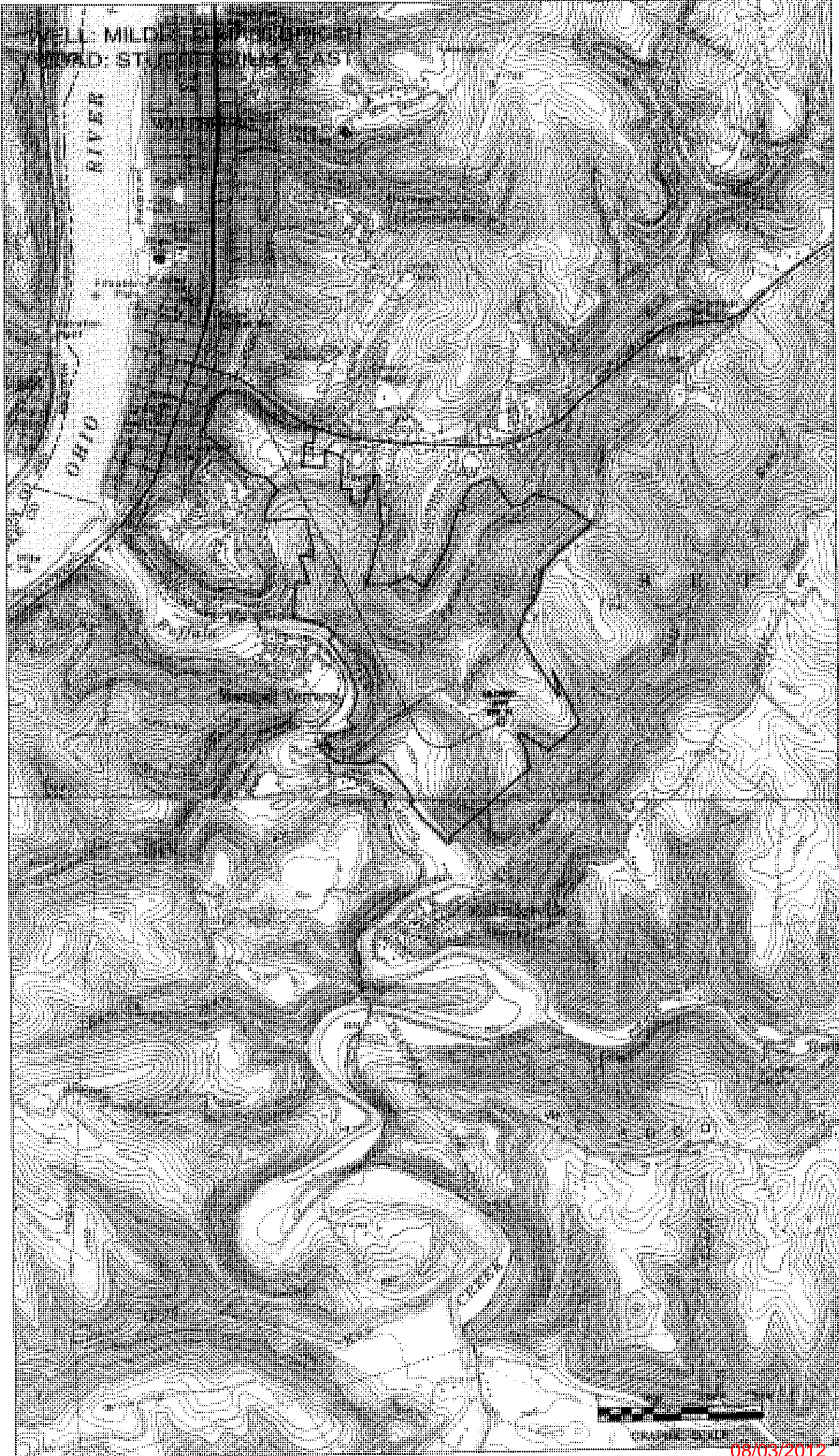
ELEVATION: 1,120'
 QUADRANGLE: STUEBENVILLE EAST WV.
 ACREAGE: 75.44 +/-
 OIL & GAS ROYALTY OWNER: MILDRED MANI AND MILES BAUER ACREAGE: 490.96 +/-
 LEASE NUMBERS: MILDRED MANI AND MILES BAUER

DRILL CONVERT DRILL DEEPER REDRILL FRACTURE OR STIMULATE
 PLUG OFF FORMATION PERFORATE NEW FORMATION PLUG & ABANDON
 CLEAN OUT & REPLUG OTHER CHANGE (SPECIFY):

TARGET FORMATION: MARCELLUS
 ESTIMATED DEPTH: TVD: 5,710' TMD: 12,838'
 WELL OPERATOR: CHESAPEAKE APPALACHIA, LLC.
 DESIGNATED AGENT: ERIC B. GILLESPIE
 ADDRESS: PO BOX 18496
 ADDRESS: PO BOX 6070
 CITY: OKLAHOMA CITY STATE: OK ZIP CODE: 73154-0496
 CITY: CHARLESTON STATE: WV ZIP CODE: 25362

08/03/2012

9-442



08/03/2012