



---

**west virginia** department of environmental protection

---

Office of Oil and Gas  
601 57th Street SE  
Charleston, WV 25304  
(304) 926-0450  
(304) 926-0452 fax

Earl Ray Tomblin, Governor  
Randy C. Huffman, Cabinet Secretary  
[www.dep.wv.gov](http://www.dep.wv.gov)

March 21, 2016

**FINAL INSPECTION REPORT**

**Well Permit Cancelled**

CHESAPEAKE APPALACHIA, L.L.C.,

The FINAL INSPECTION REPORT for the CANCELLED permit, API Well Number: 47-900143, issued to CHESAPEAKE APPALACHIA, L.L.C., and listed below has been received in this office. The permit has been cancelled as of 2/23/2016.

James Martin  
Chief

Operator: CHESAPEAKE APPALACHIA, L.L.C.  
Operator's Well No: MILDRED MANI BRK 3H  
Farm Name: MILDRED MANI AND MILES BA  
**API Well Number: 47-900143**  
Date Issued: 07/27/2012

Date Cancelled: 02/23/2016

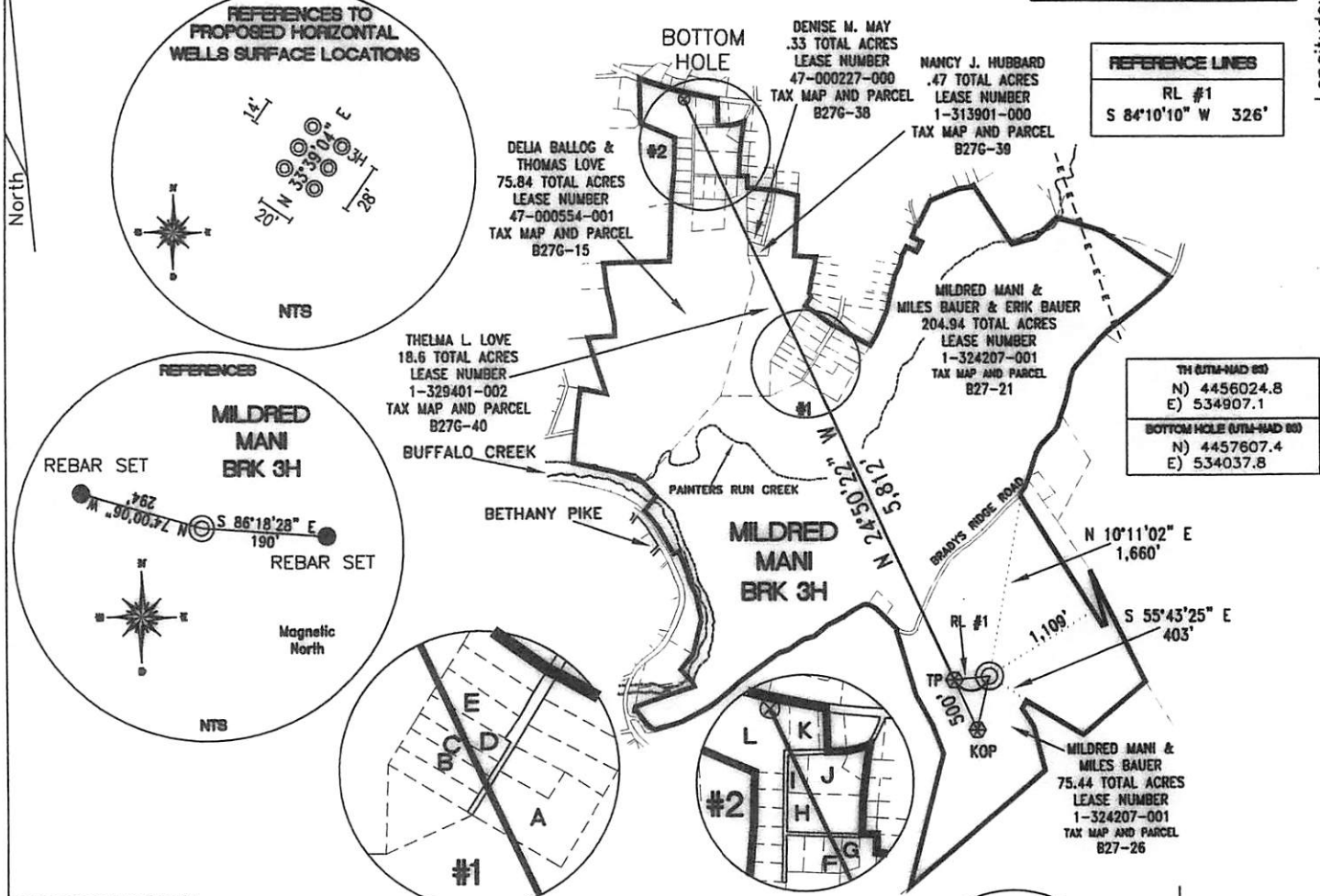
**Promoting a healthy environment.**

04/01/2016

SURFACE HOLE DEC. LONG: 80.589739 SURVEYED LONG: 80° 35' 23.1" 1.790'  
 Latitude: 40° 17' 30" (NAD 27)

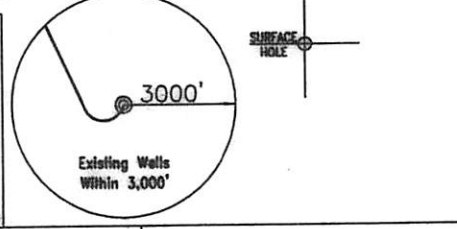
TH (NAD 83)	BOTTOM HOLE (NAD 83)	TP (NAD 83)	KOP (NAD 83)
N) 640708.7 E) 1664393.6 LAT.) 40°15'14.2" LONG.) 80°35'22.3" DEC. LAT.) 40.253951 DEC. LONG.) 80.589535	N) 645949.9 E) 1661628.1 LAT.) 40°16'05.7" LONG.) 80°35'58.8" DEC. LAT.) 40.268245 DEC. LONG.) 80.599672	N) 640675.6 E) 1664069.6 LAT.) 40°15'13.9" LONG.) 80°35'26.5" DEC. LAT.) 40.253850 DEC. LONG.) 80.590694	N) 640221.9 E) 1664279.6 LAT.) 40°15'09.4" LONG.) 80°35'23.7" DEC. LAT.) 40.252611 DEC. LONG.) 80.589922
TH (NAD 27)	BOTTOM HOLE (NAD 27)	TP (NAD 27)	KOP (NAD 27)
N) 640671.7 E) 1695828.2 LAT.) 40°15'14.0" LONG.) 80°35'23.1" DEC. LAT.) 40.253881 DEC. LONG.) 80.589739	N) 645912.9 E) 1693062.7 LAT.) 40°16'05.4" LONG.) 80°35'59.6" DEC. LAT.) 40.268174 DEC. LONG.) 80.599875	N) 640638.6 E) 1695504.2 LAT.) 40°15'13.6" LONG.) 80°35'27.2" DEC. LAT.) 40.253779 DEC. LONG.) 80.590898	N) 640184.8 E) 1695714.2 LAT.) 40°15'09.1" LONG.) 80°35'24.5" DEC. LAT.) 40.252541 DEC. LONG.) 80.590126

**REFERENCE NOTES**  
 Boundaries as shown taken from deeds, tax maps and field locations. A full boundary survey is not expressed nor implied. All bearings are based on true north. Ownership taken from public records Brooke County, West Virginia NOVEMBER 2011  
 State Plane Coordinates & NAD 83 Lat/Long by differential submeter mapping grade GPS  
 Drafted by: E.A.M.



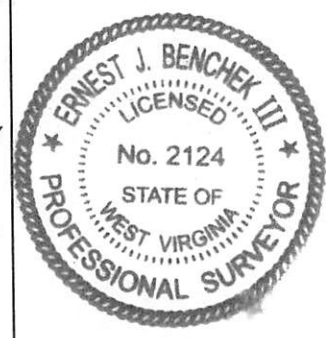
**PROPERTY INDEX**

A	- KYANKO KEYSTONE INHERITANCE TRUST, B27L-40, 1 ACRES, LEASE NUMBER 1-313935-000
B	- JOHN S. & BEVERLY A. GEORGE, B27L-37, .55 ACRES, LEASE NUMBER 1-329163-000
C	- JOHN S. & BEVERLY A. GEORGE, B27L-36, .55 ACRES LEASE NUMBER 1-329154-000
D	- JOHN S. & BEVERLY A. GEORGE, B27L-35, .55 ACRES, LEASE NUMBER 1-329151-000
E	- MCDANIEL KEYSTONE TRUST AGREEMENT, B27L-34, .69 ACRES, LEASE NUMBER 1-329435-000
F	- RALPH L. & MARLENE HANLON, B27G-17, .38 ACRES, LEASE NUMBER 47-000547-000
G	- RALPH L. & MARLENE HANLON, B27G-16, .38 ACRES, LEASE NUMBER 47-000547-000
H	- HARRY D. & JUDI M. ICKES, B27G-20, 1.84 ACRES, LEASE NUMBER 47-000514-000
I	- NATHANIEL J. & AMBER M. RAY, B27G-21.1, .512 ACRES, LEASE NUMBER 47-000525-000
J	- HARRY D. & JUDI M. ICKES, B27G-21, 1.29 ACRES, LEASE NUMBER 47-000514-000
K	- RICHARD FOSTER MCCREARY, B27G-3, .81 ACRES, LEASE NUMBER 47-000290-000
L	- DAVID MYRON & NANCY LEE HUBBARD, B27G-1, 5.021 ACRES, LEASE NUMBER 1-325793-000



FILE #: CHE 045  
 DRAWING #: 1910  
 SCALE: 1"=1600'  
 MINIMUM DEGREE OF ACCURACY: 1/200  
 PROVEN SOURCE SUBMETER MAPPING OF ELEVATION: GRADE GPS

I, THE UNDERSIGNED, HEREBY CERTIFY THAT THIS PLAT IS CORRECT TO THE BEST OF MY KNOWLEDGE AND BELIEF AND SHOWS ALL THE INFORMATION REQUIRED BY LAW AND THE REGULATIONS ISSUED AND PRESCRIBED BY THE DEPARTMENT OF ENVIRONMENTAL PROTECTION.  
 Signed: *[Signature]*  
 L.L.S. #2124 : Ernest J. Benchek III



(+) DENOTES LOCATION OF WELL ON UNITED STATES TOPOGRAPHIC MAPS WVDEP  
 OFFICE OF OIL & GAS  
 601 57TH STREET  
 CHARLESTON, WV 25304

Well Type:  Oil  Waste Diposal  Production  Deep  
 Gas  Liquid Injection  Storage  Shallow

WATERSHED: UPPER OHIO SOUTH  
 COUNTY/DISTRICT: BROOKE/BUFFALO  
 SURFACE OWNER: MILDRED MANI AND MILES BAUER  
 OIL & GAS ROYALTY OWNER: MILDRED MANI AND MILES BAUER  
 LEASE NUMBERS:

DATE: FEBRUARY 14, 2012  
 OPERATOR'S WELL #: MILDRED MANI BRK 3H  
 API WELL #: 47 09 0143 H6A  
 STATE COUNTY PERMIT CANCELLED  
 ELEVATION: 1,120'  
 QUADRANGLE: STUEBENVILLE EAST WV.  
 ACREAGE: 75.44 +/-  
 ACREAGE: 389.193 +/- 04/01/2016

DRILL  CONVERT  DRILL DEEPER  REDRILL  FRACTURE OR STIMULATE   
 PLUG OFF FORMATION  PERFORATE NEW FORMATION  PLUG & ABANDON   
 CLEAN OUT & REPLUG  OTHER CHANGE  (SPECIFY):

TARGET FORMATION: MARCELLUS  
 WELL OPERATOR : CHESAPEAKE APPALACHIA, LLC.  
 ADDRESS: PO BOX 18496  
 CITY: OKLAHOMA CITY STATE: OK ZIP CODE: 73154-0496

ESTIMATED DEPTH: TVD: 5,710' TMD: 11,470'  
 DESIGNATED AGENT : ERIC B. GILLESPIE  
 ADDRESS: Po Box 6070  
 CITY: CHARLESTON STATE: WV ZIP CODE: 25362

Longitude: 80° 35' 00" (NAD 27)  
 13.770'  
 SURFACE HOLE DEC. LAT: 40.253881 SURVEYED LAT: 40° 15' 14.0"