

SURFACE HOLE DEC. LONG: 80.601984
 SURVEYED LONG: 80° 36' 07.1"

Latitude: 40° 15' 00" (NAD 27)

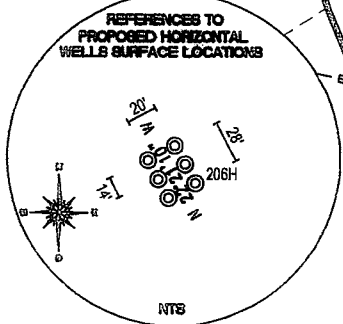
Longitude: 80° 35' 00" (NAD 27)
 SURFACE HOLE DEC. LAT: 40° 14' 46.6"
 SURVEYED LAT: 40° 14' 46.6"

TOP HOLE (NAD 83) N) 637982.1 E) 1660941.9 LAT.) 40°14'46.9" LONG.) 80°36'06.4" DEC. LAT.) 40.246352 DEC. LONG.) 80.601780	KOP (NAD 83) N) 637691.8 E) 1658725.0 LAT.) 40°14'43.7" LONG.) 80°36'35.0" DEC. LAT.) 40.245480 DEC. LONG.) 80.609708	TP (NAD 83) N) 637223.8 E) 1658901.2 LAT.) 40°14'39.1" LONG.) 80°36'32.6" DEC. LAT.) 40.244202 DEC. LONG.) 80.609056
TOP HOLE (NAD 27) N) 637945.1 E) 1692376.6 LAT.) 40°14'46.6" LONG.) 80°36'07.1" DEC. LAT.) 40.246281 DEC. LONG.) 80.601984	KOP (NAD 27) N) 637654.7 E) 1690159.7 LAT.) 40°14'43.5" LONG.) 80°36'35.7" DEC. LAT.) 40.245410 DEC. LONG.) 80.609911	TP (NAD 27) N) 637186.8 E) 1690336.0 LAT.) 40°14'38.9" LONG.) 80°36'33.3" DEC. LAT.) 40.244131 DEC. LONG.) 80.609260

REFERENCE LINES
 RL #1
 S 69°37'00" W 2,177'

HERBERT MCGOWAN
 74.61 ACRES
 LEASE NUMBER
 1-324089-000
 PARCEL ID
 8326-67

BOTTOM HOLE (NAD 83) N) 634399.8 E) 1659964.8 LAT.) 40°14'11.4" LONG.) 80°36'18.4" DEC. LAT.) 40.236486 DEC. LONG.) 80.605122	BOTTOM HOLE (NAD 27) N) 634362.7 E) 1691399.6 LAT.) 40°14'11.1" LONG.) 80°36'19.2" DEC. LAT.) 40.236416 DEC. LONG.) 80.605326
--	--

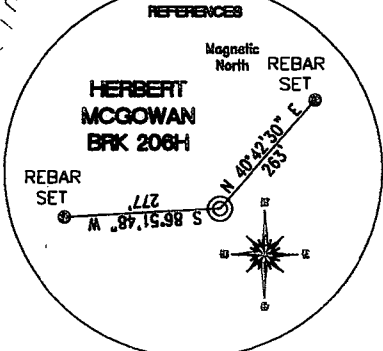


ROBERT G. TREDWAY JR. 1/3,
 DONNA FULKS 1/3, THERESA MCCLLOUD 1/3
 42.01 TOTAL ACRES
 LEASE NUMBER
 1-264324-000
 TAX MAP AND PARCEL
 B32-188

DAVID MCGOWAN
 6.27 TOTAL ACRES
 LEASE NUMBER
 1-342976-000
 TAX MAP AND PARCEL
 B32-190

SCHIAPPA & COMPANY INC
 232.6 ACRES
 LEASE NUMBER
 1-264338-000
 PARCEL ID
 832-9

LURA HOIT AND
 JAMES R. JOHNSON, JR.
 9.56 TOTAL ACRES
 LEASE NUMBER
 1-342905-000
 TAX MAP AND PARCEL
 B32-194

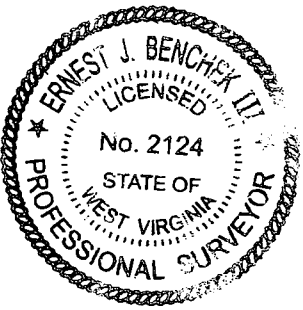


TH (UTM-NAD 83) N) 4455176.6 E) 533869.5	BOTTOM HOLE (UTM-NAD 83) N) 4454080.2 E) 533590.1
---	--

REFERENCE NOTES
 Boundaries as shown taken from deeds, tax maps and field locations. A full boundary survey is not expressed nor implied. All bearings are based on true north. Ownership taken from public records Brooke County, West Virginia JANUARY 2012
 State Plane Coordinates & NAD 83 Lat/Long by differential submeter mapping grade GPS
 Drafted by: E.A.M.

FILE #: CHE 092
 DRAWING #: 2014
 SCALE: 1" = 1200'
 MINIMUM DEGREE OF ACCURACY: 1/200
 PROVEN SOURCE OF ELEVATION: SUBMETER MAPPING GRADE GPS

I, THE UNDERSIGNED, HEREBY CERTIFY THAT THIS PLAT IS CORRECT TO THE BEST OF MY KNOWLEDGE AND BELIEF AND SHOWS ALL THE INFORMATION REQUIRED BY LAW AND THE REGULATIONS ISSUED AND PRESCRIBED BY THE DEPARTMENT OF ENVIRONMENTAL PROTECTION.
 Signed: _____
 L.L.S. #2124: Ernest J. Benchek III



(+) DENOTES LOCATION OF WELL ON UNITED STATES TOPOGRAPHIC MAPS WVDEP
 OFFICE OF OIL & GAS
 601 57TH STREET
 CHARLESTON, WV 25304

DATE: MAY 23, 2012
 OPERATOR'S WELL #: HERBERT MCGOWAN BRK 206H
 API WELL #: 47 09 00152 H6A
 STATE COUNTY PERMIT

Well Type: Oil Waste Diposal Production Deep
 Gas Liquid Injection Storage Shallow

WATERSHED: UPPER OHIO SOUTH ELEVATION: 990'
 COUNTY/DISTRICT: BROOKE / BUFFALO QUADRANGLE: BETHANY, WV.
 SURFACE OWNER: HERBERT MCGOWAN ACREAGE: 74.61 +/-
 OIL & GAS ROYALTY OWNER: HERBERT MCGOWAN ACREAGE: 356.05 +/-
 LEASE NUMBERS: _____

DRILL CONVERT DRILL DEEPER REDRILL FRACTURE OR STIMULATE
 PLUG OFF FORMATION PERFORATE NEW FORMATION PLUG & ABANDON
 CLEAN OUT & REPLUG OTHER CHANGE (SPECIFY): _____

TARGET FORMATION: MARCELLUS ESTIMATED DEPTH: TVD: 5,590' TMD: 9,544'
 WELL OPERATOR: CHESAPEAKE APPALACHIA, LLC. DESIGNATED AGENT: ERIC GILLESPIE
 ADDRESS: PO BOX 18496 ADDRESS: PO BOX 6070
 CITY: OKLAHOMA CITY STATE: OK ZIP CODE: 73154-0496 CITY: CHARLESTON STATE: WV ZIP: 25302