

Location: Brooke County, WV
Field: Brooke
Facility: Brooke County Parks BRK Pad

Slot: Slot #06
Well: Brooke County Parks BRK 6H
Wellbore: Brooke County Parks BRK 6H PWB

Plot reference wellpath in Brooke County Parks BRK 6H PWB Rev-7
 True vertical depths are referenced to SDC 46 (RKB).
 Measured depths are referenced to SDC 46 (RKB).
 SDC 46 (RKB) to Mean Sea Level: 1231.6 feet
 Mean Sea Level to Mud line (AT Slot #06): -1209.6 feet
 Coordinates are in feet referenced to Slot

Survey Program

Start (MD) (ft)	End (MD) (ft)	Slot	Log Name/Comment	Wellbore
36.00	450.00	00052 (RKB) rev-7	00052 (RKB) rev-7	Brooke County Parks BRK 6H PWB
450.00	1900.00	01174 (RKB) rev-7	01174 (RKB) rev-7	Brooke County Parks BRK 6H PWB
1900.00	3300.00	01174 (RKB) rev-7	01174 (RKB) rev-7	Brooke County Parks BRK 6H PWB
3300.00	4200.00	01174 (RKB) rev-7	01174 (RKB) rev-7	Brooke County Parks BRK 6H PWB
4200.00	5100.00	01174 (RKB) rev-7	01174 (RKB) rev-7	Brooke County Parks BRK 6H PWB

Tie On: 0.00° Inc. 25.00ft MD, 26.00ft TVD, 0.00ft VS
 20in Conductor: 0.00° Inc. 126.00ft MD, 126.00ft TVD, 0.00ft VS
 13.375in Casing Surface: 0.00° Inc. 350.00ft MD, 350.00ft TVD, 0.00ft VS

Location Information

Facility Name	Grid East (US ft)	Grid North (US ft)	Longitude
Brooke County Parks BRK Pad	176555.609	14521905.040	80°32'52.310"W
Slot	Local E (ft)	Local N (ft)	Longitude
Slot #06	-0.58	0.10	80°32'52.308"W

SDC 46 (RKB) to Mud line (AT Slot #06): -1209.6 ft
 Mean Sea Level to Mud line (AT Slot #06): -1209.6 ft
 SDC 46 (RKB) to Mean Sea Level: 1231.6 ft

9.625in Casing Intermediate: 0.00° Inc. 1682.00ft MD, 1682.00ft TVD, 0.00ft VS
 KOP 1: 0.00° Inc. 2155.23ft MD, 2155.23ft TVD, 0.00ft VS
 2.00°/100ft
 End of Build: 12.50° Inc. 2780.23ft MD, 2775.28ft TVD, -14.22ft VS

Well Profile Data

Design Comment	MD (ft)	Inc (°)	Az (°)	TVD (ft)	Local N (ft)	Local E (ft)	DLS (°/100ft)	VS (ft)
Tie On	25.00	0.00	265.638	26.00	0.00	0.00	0.00	0.00
KOP 1	2155.23	0.00	265.638	2155.23	0.00	0.00	0.00	0.00
End of Build	2780.23	12.50	265.638	2775.28	-5.17	-14.22	0.00	-131.21
Curve KOP	5361.37	12.50	265.638	5295.24	-47.66	-624.75	0.00	-131.21
Landing Pt	6392.21	89.11	158.556	5958.00	-680.56	-524.70	0.00	504.12
BHL	14385.04	89.11	158.556	6092.00	-8121.99	-2398.16	0.00	8468.64

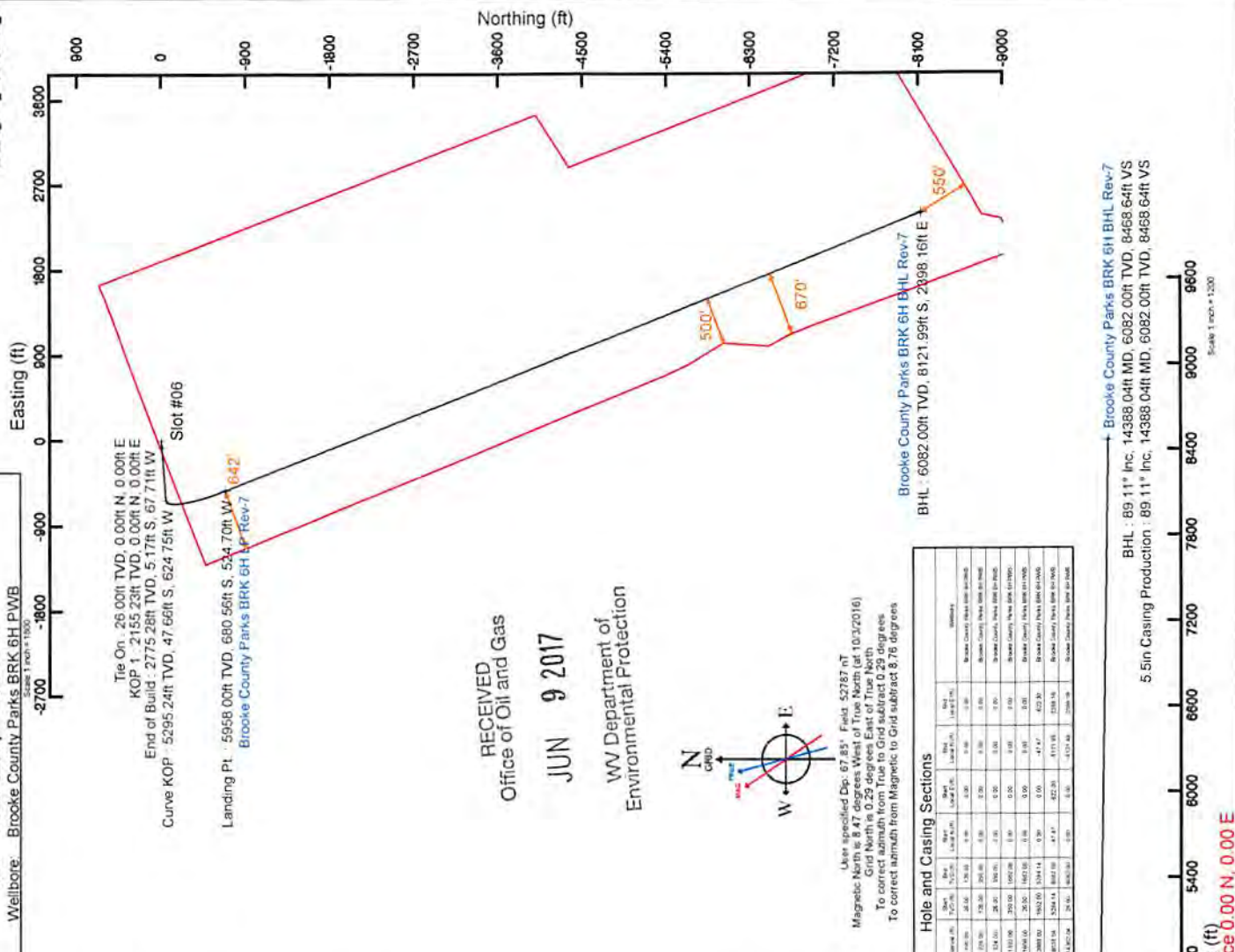
Targets

MD (ft)	Inc (°)	Az (°)	TVD (ft)	Local N (ft)	Local E (ft)
14385.04	89.11	158.556	6092.00	-8121.99	-2398.16

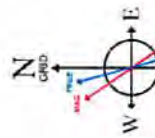
Hole and Casing Sections

MD (ft)	Inc (°)	Az (°)	TVD (ft)	Local N (ft)	Local E (ft)	Wellbore
0.00	0.00	265.638	26.00	0.00	0.00	Brooke County Parks BRK 6H PWB
2155.23	0.00	265.638	2155.23	0.00	0.00	Brooke County Parks BRK 6H PWB
2780.23	12.50	265.638	2775.28	-5.17	-14.22	Brooke County Parks BRK 6H PWB
5361.37	12.50	265.638	5295.24	-47.66	-624.75	Brooke County Parks BRK 6H PWB
6392.21	89.11	158.556	5958.00	-680.56	-524.70	Brooke County Parks BRK 6H PWB
14385.04	89.11	158.556	6092.00	-8121.99	-2398.16	Brooke County Parks BRK 6H PWB

Landing Pt.: 89.11° Inc. 6392.21ft MD, 5958.00ft TVD, 504.12ft VS
 Brooke County Parks BRK 6H LP Rev-7

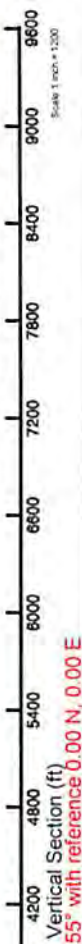


RECEIVED
Office of Oil and Gas
JUN 9 2017
WV Department of
Environmental Protection



Use specified Dip: 87.85° Field: 52787 nT
 Magnetic North is 8.47 degrees West of True North (at 10/3/2016)
 Grid North is 0.29 degrees East of True North
 To correct azimuth from True to Grid subtract 0.29 degrees
 To correct azimuth from Magnetic to Grid subtract 8.76 degrees

Brooke County Parks BRK 6H BHL Rev-7
 BHL: 89.11° Inc. 14388.04ft MD, 6082.00ft TVD, 8468.64ft VS
 5.5in Casing Production: 89.11° Inc. 14388.04ft MD, 6082.00ft TVD, 8468.64ft VS



Vertical Section (ft)
 Azimuth 163.55° with reference 0.00 N, 0.00 E



Planned Wellpath Report

Brooke County Parks BRK 6H PWP Rev-C.0
Page 1 of 8



REFERENCE WELLPATH IDENTIFICATION			
Operator	SOUTHWESTERN ENERGY	Slot	Slot #06
Area	Brooke County, WV	Well	Brooke County Parks BRK 6H
Field	Brooke	Wellbore	Brooke County Parks BRK 6H PWB
Facility	Brooke County Parks BRK Pad		

REPORT SETUP INFORMATION			
Projection System	NAD83 / UTM Zone 17 North, US feet	Software System	WellArchitect® 5.0
North Reference	Grid	User	Edsaryar
Scale	0.999618	Report Generated	10/10/2016 at 12:28:42 PM
Convergence at slot	0.30° East	Database/Source file	WA_MPL_EASTERNUS_Defn/Brooke_County_Parks_BRK_6H_PWP_Rev-C.0.xml

WELLPATH LOCATION						
	Local coordinates		Grid coordinates		Geographic coordinates	
	North[ft]	East[ft]	Easting[US ft]	Northing[US ft]	Latitude	Longitude
Slot Location	-0.58	0.16	1766555.77	14621905.04	40°15'37.693"N	80°32'52.308"W
Facility Reference Pt			1766555.61	14621905.62	40°15'37.699"N	80°32'52.310"W
Field Reference Pt			0.00	0.00	0°00'00.000"	85°29'19.478"W

WELLPATH DATUM			
Calculation method	Minimum curvature	SDC 46 (RKB) to Facility Vertical Datum	1231.60ft
Horizontal Reference Pt	Slot	SDC 46 (RKB) to Mean Sea Level	1231.60ft
Vertical Reference Pt	SDC 46 (RKB)	SDC 46 (RKB) to Mud Line at Slot (Slot #06)	26.00ft
MD Reference Pt	SDC 46 (RKB)	Section Origin	N 0.00, E 0.00 ft
Field Vertical Reference	Mean Sea Level	Section Azimuth	163.55°

RECEIVED
Office of Oil and Gas

JUN 9 2017

WV Department of
Environmental Protection



Planned Wellpath Report

Brooke County Parks BRK 6H PWP Rev-C.0
Page 2 of 8

RECEIVED
Office of Oil and Gas

JUN 9 2017



WV Department of
Environmental Protection

REFERENCE WELLPATH IDENTIFICATION			
Operator	SOUTHWESTERN ENERGY	Slot	Slot #06
Area	Brooke County, WV	Well	Brooke County Parks BRK 6H
Field	Brooke	Wellbore	Brooke County Parks BRK 6H PWB
Facility	Brooke County Parks BRK Pad		

WELLPATH DATA (164 stations) † = interpolated/extrapolated station																
MD [ft]	Inclination [°]	Azimuth [°]	TVD [ft]	Vert Sect [ft]	North [ft]	East [ft]	Grid East [US ft]	Grid North [US ft]	Latitude	Longitude	Closure Dist [ft]	Closure Dir [°]	DLS [°/100ft]	Build Rate [°/100ft]	Turn Rate [°/100ft]	Comments
0.00†	0.000	265.638	0.00	0.00	0.00	0.00	1766555.77	14621905.04	40°15'37.693"N	80°32'52.308"W	0.00	0.000	0.00	0.00	0.00	
26.00	0.000	265.638	26.00	0.00	0.00	0.00	1766555.77	14621905.04	40°15'37.693"N	80°32'52.308"W	0.00	0.000	0.00	0.00	0.00	
126.00†	0.000	265.638	126.00	0.00	0.00	0.00	1766555.77	14621905.04	40°15'37.693"N	80°32'52.308"W	0.00	0.000	0.00	0.00	0.00	
226.00†	0.000	265.638	226.00	0.00	0.00	0.00	1766555.77	14621905.04	40°15'37.693"N	80°32'52.308"W	0.00	0.000	0.00	0.00	0.00	
326.00†	0.000	265.638	326.00	0.00	0.00	0.00	1766555.77	14621905.04	40°15'37.693"N	80°32'52.308"W	0.00	0.000	0.00	0.00	0.00	
426.00†	0.000	265.638	426.00	0.00	0.00	0.00	1766555.77	14621905.04	40°15'37.693"N	80°32'52.308"W	0.00	0.000	0.00	0.00	0.00	
526.00†	0.000	265.638	526.00	0.00	0.00	0.00	1766555.77	14621905.04	40°15'37.693"N	80°32'52.308"W	0.00	0.000	0.00	0.00	0.00	
626.00†	0.000	265.638	626.00	0.00	0.00	0.00	1766555.77	14621905.04	40°15'37.693"N	80°32'52.308"W	0.00	0.000	0.00	0.00	0.00	
726.00†	0.000	265.638	726.00	0.00	0.00	0.00	1766555.77	14621905.04	40°15'37.693"N	80°32'52.308"W	0.00	0.000	0.00	0.00	0.00	
826.00†	0.000	265.638	826.00	0.00	0.00	0.00	1766555.77	14621905.04	40°15'37.693"N	80°32'52.308"W	0.00	0.000	0.00	0.00	0.00	
926.00†	0.000	265.638	926.00	0.00	0.00	0.00	1766555.77	14621905.04	40°15'37.693"N	80°32'52.308"W	0.00	0.000	0.00	0.00	0.00	
1026.00†	0.000	265.638	1026.00	0.00	0.00	0.00	1766555.77	14621905.04	40°15'37.693"N	80°32'52.308"W	0.00	0.000	0.00	0.00	0.00	
1126.00†	0.000	265.638	1126.00	0.00	0.00	0.00	1766555.77	14621905.04	40°15'37.693"N	80°32'52.308"W	0.00	0.000	0.00	0.00	0.00	
1226.00†	0.000	265.638	1226.00	0.00	0.00	0.00	1766555.77	14621905.04	40°15'37.693"N	80°32'52.308"W	0.00	0.000	0.00	0.00	0.00	
1326.00†	0.000	265.638	1326.00	0.00	0.00	0.00	1766555.77	14621905.04	40°15'37.693"N	80°32'52.308"W	0.00	0.000	0.00	0.00	0.00	
1426.00†	0.000	265.638	1426.00	0.00	0.00	0.00	1766555.77	14621905.04	40°15'37.693"N	80°32'52.308"W	0.00	0.000	0.00	0.00	0.00	
1526.00†	0.000	265.638	1526.00	0.00	0.00	0.00	1766555.77	14621905.04	40°15'37.693"N	80°32'52.308"W	0.00	0.000	0.00	0.00	0.00	
1626.00†	0.000	265.638	1626.00	0.00	0.00	0.00	1766555.77	14621905.04	40°15'37.693"N	80°32'52.308"W	0.00	0.000	0.00	0.00	0.00	
1632.00†	0.000	265.638	1632.00	0.00	0.00	0.00	1766555.77	14621905.04	40°15'37.693"N	80°32'52.308"W	0.00	0.000	0.00	0.00	0.00	Base Big Injun - 1632' TVD
1726.00†	0.000	265.638	1726.00	0.00	0.00	0.00	1766555.77	14621905.04	40°15'37.693"N	80°32'52.308"W	0.00	0.000	0.00	0.00	0.00	
1826.00†	0.000	265.638	1826.00	0.00	0.00	0.00	1766555.77	14621905.04	40°15'37.693"N	80°32'52.308"W	0.00	0.000	0.00	0.00	0.00	
1926.00†	0.000	265.638	1926.00	0.00	0.00	0.00	1766555.77	14621905.04	40°15'37.693"N	80°32'52.308"W	0.00	0.000	0.00	0.00	0.00	
1976.00†	0.000	265.638	1976.00	0.00	0.00	0.00	1766555.77	14621905.04	40°15'37.693"N	80°32'52.308"W	0.00	0.000	0.00	0.00	0.00	Berea - 1976' TVD
2026.00†	0.000	265.638	2026.00	0.00	0.00	0.00	1766555.77	14621905.04	40°15'37.693"N	80°32'52.308"W	0.00	0.000	0.00	0.00	0.00	
2126.00†	0.000	265.638	2126.00	0.00	0.00	0.00	1766555.77	14621905.04	40°15'37.693"N	80°32'52.308"W	0.00	0.000	0.00	0.00	0.00	
2155.23	0.000	265.638	2155.23	0.00	0.00	0.00	1766555.77	14621905.04	40°15'37.693"N	80°32'52.308"W	0.00	0.000	0.00	0.00	0.00	
2226.00†	1.415	265.638	2225.99	-0.18	-0.07	-0.87	1766554.90	14621904.97	40°15'37.693"N	80°32'52.319"W	0.87	265.638	2.00	2.00	-133.34	
2326.00†	3.415	265.638	2325.90	-1.07	-0.39	-5.07	1766550.70	14621904.65	40°15'37.690"N	80°32'52.373"W	5.09	265.638	2.00	2.00	0.00	
2426.00†	5.415	265.638	2425.60	-2.68	-0.97	-12.75	1766543.03	14621904.07	40°15'37.684"N	80°32'52.472"W	12.79	265.638	2.00	2.00	0.00	
2526.00†	7.415	265.638	2524.97	-5.02	-1.82	-23.89	1766531.89	14621903.22	40°15'37.676"N	80°32'52.616"W	23.96	265.638	2.00	2.00	0.00	



Planned Wellpath Report

Brooke County Parks BRK 6H PWP Rev-C.0
Page 3 of 8

RECEIVED
Office of Oil and Gas

JUN 9 2017

WV Department of
Environmental Protection



REFERENCE WELLPATH IDENTIFICATION

Operator	SOUTHWESTERN ENERGY	Slot	Slot #06
Area	Brooke County, WV	Well	Brooke County Parks BRK 6H
Field	Brooke	Wellbore	Brooke County Parks BRK 6H PWB
Facility	Brooke County Parks BRK Pad		

WELLPATH DATA (164 stations) † = interpolated/extrapolated station

MD [ft]	Inclination [°]	Azimuth [°]	TVD [ft]	Vert Sect [ft]	North [ft]	East [ft]	Grid East [US ft]	Grid North [US ft]	Latitude	Longitude	Closure Dist [ft]	Closure Dir [°]	DLS [°/100ft]	Build Rate [°/100ft]	Turn Rate [°/100ft]	Comments
2626.00†	9.415	265.638	2623.88	-8.08	-2.94	-38.48	1766517.30	14621902.11	40°15'37.666"N	80°32'52.805"W	38.59	265.638	2.00	2.00	0.00	
2726.00†	11.415	265.638	2722.23	-11.87	-4.31	-56.51	1766499.29	14621900.73	40°15'37.653"N	80°32'53.037"W	56.67	265.638	2.00	2.00	0.00	
2780.23	12.500	265.638	2775.28	-14.22	-5.17	-67.71	1766488.09	14621899.88	40°15'37.646"N	80°32'53.182"W	67.91	265.638	2.00	2.00	0.00	
2826.00†	12.500	265.638	2819.97	-16.29	-5.92	-77.59	1766478.21	14621899.12	40°15'37.639"N	80°32'53.309"W	77.81	265.638	0.00	0.00	0.00	
2926.00†	12.500	265.638	2917.60	-20.83	-7.57	-99.17	1766456.64	14621897.48	40°15'37.623"N	80°32'53.588"W	99.46	265.638	0.00	0.00	0.00	
3026.00†	12.500	265.638	3015.23	-25.36	-9.21	-120.75	1766435.07	14621895.83	40°15'37.608"N	80°32'53.866"W	121.10	265.638	0.00	0.00	0.00	
3126.00†	12.500	265.638	3112.86	-29.89	-10.86	-142.33	1766413.49	14621894.19	40°15'37.593"N	80°32'54.145"W	142.75	265.638	0.00	0.00	0.00	
3226.00†	12.500	265.638	3210.49	-34.42	-12.50	-163.91	1766391.92	14621892.54	40°15'37.578"N	80°32'54.423"W	164.39	265.638	0.00	0.00	0.00	
3326.00†	12.500	265.638	3308.12	-38.96	-14.15	-185.49	1766370.35	14621890.90	40°15'37.563"N	80°32'54.702"W	186.03	265.638	0.00	0.00	0.00	
3426.00†	12.500	265.638	3405.75	-43.49	-15.80	-207.08	1766348.77	14621889.25	40°15'37.548"N	80°32'54.980"W	207.68	265.638	0.00	0.00	0.00	
3526.00†	12.500	265.638	3503.38	-48.02	-17.44	-228.66	1766327.20	14621887.60	40°15'37.532"N	80°32'55.258"W	229.32	265.638	0.00	0.00	0.00	
3626.00†	12.500	265.638	3601.01	-52.55	-19.09	-250.24	1766305.63	14621885.96	40°15'37.517"N	80°32'55.537"W	250.97	265.638	0.00	0.00	0.00	
3726.00†	12.500	265.638	3698.64	-57.09	-20.74	-271.82	1766284.06	14621884.31	40°15'37.502"N	80°32'55.815"W	272.61	265.638	0.00	0.00	0.00	
3826.00†	12.500	265.638	3796.26	-61.62	-22.38	-293.40	1766262.48	14621882.67	40°15'37.487"N	80°32'56.094"W	294.25	265.638	0.00	0.00	0.00	
3926.00†	12.500	265.638	3893.89	-66.15	-24.03	-314.98	1766240.91	14621881.02	40°15'37.472"N	80°32'56.372"W	315.90	265.638	0.00	0.00	0.00	
4026.00†	12.500	265.638	3991.52	-70.68	-25.67	-336.56	1766219.34	14621879.38	40°15'37.456"N	80°32'56.651"W	337.54	265.638	0.00	0.00	0.00	
4126.00†	12.500	265.638	4089.15	-75.22	-27.32	-358.14	1766197.76	14621877.73	40°15'37.441"N	80°32'56.929"W	359.18	265.638	0.00	0.00	0.00	
4226.00†	12.500	265.638	4186.78	-79.75	-28.97	-379.73	1766176.19	14621876.08	40°15'37.426"N	80°32'57.208"W	380.83	265.638	0.00	0.00	0.00	
4326.00†	12.500	265.638	4284.41	-84.28	-30.61	-401.31	1766154.62	14621874.44	40°15'37.411"N	80°32'57.486"W	402.47	265.638	0.00	0.00	0.00	
4426.00†	12.500	265.638	4382.04	-88.81	-32.26	-422.89	1766133.05	14621872.79	40°15'37.396"N	80°32'57.765"W	424.12	265.638	0.00	0.00	0.00	
4526.00†	12.500	265.638	4479.67	-93.35	-33.91	-444.47	1766111.47	14621871.15	40°15'37.381"N	80°32'58.043"W	445.76	265.638	0.00	0.00	0.00	
4626.00†	12.500	265.638	4577.30	-97.88	-35.55	-466.05	1766089.90	14621869.50	40°15'37.365"N	80°32'58.322"W	467.40	265.638	0.00	0.00	0.00	
4726.00†	12.500	265.638	4674.93	-102.41	-37.20	-487.63	1766068.33	14621867.86	40°15'37.350"N	80°32'58.600"W	489.05	265.638	0.00	0.00	0.00	
4826.00†	12.500	265.638	4772.56	-106.94	-38.85	-509.21	1766046.75	14621866.21	40°15'37.335"N	80°32'58.879"W	510.69	265.638	0.00	0.00	0.00	
4926.00†	12.500	265.638	4870.19	-111.48	-40.49	-530.79	1766025.18	14621864.56	40°15'37.320"N	80°32'59.157"W	532.34	265.638	0.00	0.00	0.00	
5026.00†	12.500	265.638	4967.82	-116.01	-42.14	-552.38	1766003.61	14621862.92	40°15'37.305"N	80°32'59.436"W	553.98	265.638	0.00	0.00	0.00	
5126.00†	12.500	265.638	5065.45	-120.54	-43.78	-573.96	1765982.03	14621861.27	40°15'37.289"N	80°32'59.714"W	575.62	265.638	0.00	0.00	0.00	
5226.00†	12.500	265.638	5163.08	-125.07	-45.43	-595.54	1765960.46	14621859.63	40°15'37.274"N	80°32'59.993"W	597.27	265.638	0.00	0.00	0.00	
5326.00†	12.500	265.638	5260.71	-129.61	-47.08	-617.12	1765938.89	14621857.98	40°15'37.259"N	80°33'00.271"W	618.91	265.638	0.00	0.00	0.00	
5361.37	12.500	265.638	5295.24	-131.21	-47.66	-624.75	1765931.26	14621857.40	40°15'37.254"N	80°33'00.370"W	626.57	265.638	0.00	0.00	0.00	

Planned Wellpath Report

Brooke County Parks BRK 6H PWP Rev-C.0

RECEIVED
Office of Oil and Gas

JUN 9 2017

WV Department of
Environmental Protection



REFERENCE WELLPATH IDENTIFICATION

Operator	Area	Field	Facility
SOUTHWESTERN ENERGY	Brooke County, WV	Brooke	Brooke County Parks BRK Pad
		Brooke	Brooke County Parks BRK 6H PWB
		Well	Brooke County Parks BRK 6H
		Slot #06	

WELLPATH DATA (164 stations) † = interpolated/extrapolated station																
MD	Inclination	Azimuth	TVD	Vent Sect	North	East	Grid East	Grid North	Latitude	Longitude	Closure	Dir	DLS	Build	Turn	Comments
[ft]	[°]	[°]	[ft]	[ft]	[ft]	[ft]	[ft]	[ft]	[ft]	[ft]	[ft]	[°]	[ft/100ft]	[ft]	[°/100ft]	[ft/100ft]
5426.00	12.139	238.176	5358.44	-130.87	-51.78	637.51	1765918.50	14621853.28	40°15'37.21"N	80°33'00.53"W	639.61	265.357	9.00	-0.56	-42.49	
5434.76	12.300	234.528	5367.00	-130.32	-52.81	639.05	1765916.96	14621852.26	40°15'37.20"N	80°33'00.54"W	641.23	265.276	9.00	1.83	-41.64	Upper Rhinestreet - 5367' TVD
5526.00	16.279	204.833	5455.51	-117.53	-70.08	652.36	1765903.66	14621834.99	40°15'37.03"N	80°33'00.72"W	656.12	263.869	9.00	4.36	-32.55	
5549.52	17.772	199.704	5478.00	-112.15	-76.45	654.96	1765901.07	14621828.62	40°15'36.97"N	80°33'00.76"W	659.40	263.342	9.00	6.35	-21.81	Lower Rhinestreet - 5478' TVD
5613.38	22.326	189.399	5538.00	-93.35	-97.61	660.23	1765895.80	14621807.46	40°15'36.76"N	80°33'00.83"W	667.41	261.590	9.00	7.13	-12.41	Basal Rhinestreet - 5538' TVD
5626.00	23.286	187.833	5549.63	-88.92	-102.45	660.96	1765895.07	14621802.63	40°15'36.71"N	80°33'00.84"W	668.85	261.189	9.00	7.61	-12.41	
5695.43	28.784	181.032	5612.00	-60.44	-132.78	663.13	1765892.89	14621772.31	40°15'36.41"N	80°33'00.87"W	676.30	258.677	9.00	7.92	-9.80	Cashagua - 5612' TVD
5726.00	31.289	178.753	5638.47	-45.75	-148.08	663.09	1765892.93	14621757.01	40°15'36.26"N	80°33'00.87"W	679.43	257.411	9.00	8.19	-7.45	
5759.91	34.107	176.584	5667.00	-27.99	-166.38	662.33	1765893.69	14621738.72	40°15'36.08"N	80°33'00.86"W	682.91	255.899	9.00	8.31	-6.40	Middlesex - 5667' TVD
5790.58	36.685	174.877	5692.00	-10.63	-184.09	661.00	1765895.02	14621721.02	40°15'35.90"N	80°33'00.84"W	686.16	254.437	9.00	8.40	-5.56	Lower Middlesex - 5692' TVD
5826.00	39.688	173.147	5719.84	10.91	-205.87	658.71	1765897.31	14621699.25	40°15'35.69"N	80°33'00.81"W	690.13	252.644	9.00	8.48	-4.88	
5839.31	40.823	172.553	5730.00	19.40	-214.40	657.64	1765898.39	14621690.72	40°15'35.60"N	80°33'00.80"W	691.71	251.943	9.00	8.53	-4.46	Burket - 5730' TVD
5841.96	41.049	172.438	5732.00	21.11	-216.12	657.41	1765898.61	14621689.00	40°15'35.59"N	80°33'00.80"W	692.03	251.802	9.00	8.54	-4.34	Tully - 5732' TVD
5926.00	48.275	169.250	5791.74	79.66	-274.37	647.92	1765908.10	14621630.77	40°15'35.01"N	80°33'00.68"W	703.62	247.049	9.00	8.60	-3.79	
5932.43	48.832	169.036	5796.00	84.46	-279.11	647.01	1765909.01	14621626.04	40°15'34.96"N	80°33'00.67"W	704.64	246.665	9.00	8.65	-3.32	Mahantango - 5796' TVD
6026.00	56.962	166.281	5852.40	158.83	-351.92	630.98	1765925.03	14621553.26	40°15'34.24"N	80°33'00.47"W	722.48	240.850	9.00	8.69	-2.94	
6126.00	65.707	163.851	5900.33	246.45	-436.58	608.32	1765947.69	14621468.62	40°15'33.41"N	80°33'00.18"W	748.77	234.333	9.00	8.74	-2.43	
6127.63	65.850	163.815	5901.00	247.93	-438.01	607.90	1765948.10	14621467.20	40°15'33.39"N	80°33'00.17"W	749.27	234.226	9.00	8.76	-2.24	Evanna - 5901' TVD
6197.09	71.945	162.325	5926.00	312.71	-499.97	589.03	1765966.97	14621405.26	40°15'32.78"N	80°32'59.93"W	772.61	229.675	9.00	8.78	-2.14	Upper Marcellus - 5926' TVD
6226.00	74.485	161.737	5934.35	340.37	-526.29	580.49	1765975.51	14621378.95	40°15'32.52"N	80°32'59.83"W	783.55	227.803	9.00	8.79	-2.03	
6299.66	80.964	160.297	5950.00	412.23	-594.31	557.08	1765998.91	14621310.95	40°15'31.84"N	80°32'59.53"W	814.58	223.148	9.00	8.80	-1.95	Target Entry - 5950' TVD
6326.00	83.282	159.797	5953.61	438.27	-618.84	548.17	1766007.81	14621286.44	40°15'31.60"N	80°32'59.41"W	826.71	221.535	9.00	8.80	-1.90	
6392.21	89.111	158.556	5958.00	504.12	-680.56	524.70	1766031.28	14621224.74	40°15'30.99"N	80°32'59.12"W	859.34	217.631	9.00	8.80	-1.87	
6426.00	89.111	158.556	5958.52	537.77	-712.00	512.35	1766043.62	14621193.31	40°15'30.68"N	80°32'58.96"W	877.18	215.738	9.00	8.80	0.00	
6526.00	89.111	158.556	5960.07	637.38	-805.07	475.79	1766080.16	14621100.28	40°15'29.76"N	80°32'58.49"W	935.15	210.583	9.00	8.80	0.00	
6626.00	89.111	158.556	5961.63	736.99	-898.14	439.24	1766116.70	14621007.25	40°15'28.84"N	80°32'58.03"W	999.79	206.061	9.00	8.80	0.00	
6726.00	89.111	158.556	5963.18	836.60	-991.20	402.68	1766153.24	14620914.22	40°15'27.91"N	80°32'57.56"W	1069.88	202.110	9.00	8.80	0.00	
6826.00	89.111	158.556	5964.73	936.21	-1084.27	366.13	1766189.79	14620821.19	40°15'26.99"N	80°32'57.10"W	1144.42	198.658	9.00	8.80	0.00	
6926.00	89.111	158.556	5966.28	1035.81	-1177.34	329.57	1766226.33	14620728.16	40°15'26.07"N	80°32'56.63"W	1222.59	195.639	9.00	8.80	0.00	
7026.00	89.111	158.556	5967.83	1135.42	-1270.40	293.02	1766262.87	14620635.13	40°15'25.15"N	80°32'56.17"W	1303.76	192.988	9.00	8.80	0.00	



Planned Wellpath Report

Brooke County Parks BRK 6H PWP Rev-C.0
Page 5 of 8

RECEIVED
Office of Oil and Gas

JUN 9 2017

WV Department of
Environmental Protection



REFERENCE WELLPATH IDENTIFICATION

Operator	SOUTHWESTERN ENERGY	Slot	Slot #06
Area	Brooke County, WV	Well	Brooke County Parks BRK 6H
Field	Brooke	Wellbore	Brooke County Parks BRK 6H PWB
Facility	Brooke County Parks BRK Pad		

WELLPATH DATA (164 stations) † = interpolated/extrapolated station

MD	Inclination	Azimuth	TVD	Vert Sect	North	East	Grid East	Grid North	Latitude	Longitude	Closure Dist	Closure Dir	DLS	Build Rate	Turn Rate	Comments
(ft)	[°]	[°]	(ft)	(ft)	(ft)	(ft)	[US ft]	[US ft]			(ft)	[°]	[°/100ft]	[°/100ft]	[°/100ft]	
7126.00†	89.111	158.556	5969.38	1235.03	-1363.47	-256.46	1766299.41	14620542.09	40°15'24.233"N	80°32'55.705"W	1387.38	190.653	0.00	0.00	0.00	
7226.00†	89.111	158.556	5970.93	1334.64	-1456.53	-219.91	1766335.95	14620449.06	40°15'23.311"N	80°32'55.240"W	1473.04	188.586	0.00	0.00	0.00	
7326.00†	89.111	158.556	5972.48	1434.25	-1549.60	-183.35	1766372.49	14620356.03	40°15'22.390"N	80°32'54.775"W	1560.41	186.748	0.00	0.00	0.00	
7426.00†	89.111	158.556	5974.03	1533.86	-1642.67	-146.80	1766409.03	14620263.00	40°15'21.468"N	80°32'54.309"W	1649.21	185.107	0.00	0.00	0.00	
7526.00†	89.111	158.556	5975.58	1633.47	-1735.73	-110.24	1766445.57	14620169.97	40°15'20.547"N	80°32'53.844"W	1739.23	183.634	0.00	0.00	0.00	
7626.00†	89.111	158.556	5977.13	1733.07	-1828.80	-73.69	1766482.11	14620076.94	40°15'19.625"N	80°32'53.379"W	1830.28	182.307	0.00	0.00	0.00	
7726.00†	89.111	158.556	5978.68	1832.68	-1921.87	-37.13	1766518.65	14619983.91	40°15'18.704"N	80°32'52.913"W	1922.23	181.107	0.00	0.00	0.00	
7826.00†	89.111	158.556	5980.24	1932.29	-2014.93	-0.58	1766555.19	14619890.88	40°15'17.782"N	80°32'52.448"W	2014.93	180.016	0.00	0.00	0.00	
7926.00†	89.111	158.556	5981.79	2031.90	-2108.00	35.98	1766591.73	14619797.85	40°15'16.861"N	80°32'51.983"W	2108.31	179.022	0.00	0.00	0.00	
8026.00†	89.111	158.556	5983.34	2131.51	-2201.07	72.53	1766628.27	14619704.82	40°15'15.939"N	80°32'51.517"W	2202.26	178.113	0.00	0.00	0.00	
8126.00†	89.111	158.556	5984.89	2231.12	-2294.13	109.09	1766664.81	14619611.79	40°15'15.018"N	80°32'51.052"W	2296.72	177.278	0.00	0.00	0.00	
8226.00†	89.111	158.556	5986.44	2330.72	-2387.20	145.64	1766701.36	14619518.76	40°15'14.096"N	80°32'50.587"W	2391.64	176.509	0.00	0.00	0.00	
8326.00†	89.111	158.556	5987.99	2430.33	-2480.26	182.20	1766737.90	14619425.73	40°15'13.175"N	80°32'50.121"W	2486.95	175.799	0.00	0.00	0.00	
8426.00†	89.111	158.556	5989.54	2529.94	-2573.33	218.75	1766774.44	14619332.70	40°15'12.253"N	80°32'49.656"W	2582.61	175.141	0.00	0.00	0.00	
8526.00†	89.111	158.556	5991.09	2629.55	-2666.40	255.30	1766810.98	14619239.67	40°15'11.332"N	80°32'49.191"W	2678.59	174.531	0.00	0.00	0.00	
8626.00†	89.111	158.556	5992.64	2729.16	-2759.46	291.86	1766847.52	14619146.64	40°15'10.410"N	80°32'48.725"W	2774.86	173.962	0.00	0.00	0.00	
8726.00†	89.111	158.556	5994.19	2828.77	-2852.53	328.41	1766884.06	14619053.60	40°15'09.489"N	80°32'48.260"W	2871.37	173.432	0.00	0.00	0.00	
8826.00†	89.111	158.556	5995.74	2928.37	-2945.60	364.97	1766920.60	14618960.57	40°15'08.567"N	80°32'47.795"W	2968.12	172.937	0.00	0.00	0.00	
8926.00†	89.111	158.556	5997.29	3027.98	-3038.66	401.52	1766957.14	14618867.54	40°15'07.646"N	80°32'47.329"W	3065.08	172.473	0.00	0.00	0.00	
9026.00†	89.111	158.556	5998.84	3127.59	-3131.73	438.08	1766993.68	14618774.51	40°15'06.724"N	80°32'46.864"W	3162.22	172.037	0.00	0.00	0.00	
9126.00†	89.111	158.556	6000.40	3227.20	-3224.80	474.63	1767030.22	14618681.48	40°15'05.803"N	80°32'46.399"W	3259.54	171.627	0.00	0.00	0.00	
9226.00†	89.111	158.556	6001.95	3326.81	-3317.86	511.19	1767066.76	14618588.45	40°15'04.881"N	80°32'45.933"W	3357.01	171.241	0.00	0.00	0.00	
9326.00†	89.111	158.556	6003.50	3426.42	-3410.93	547.74	1767103.30	14618495.42	40°15'03.960"N	80°32'45.468"W	3454.63	170.877	0.00	0.00	0.00	
9426.00†	89.111	158.556	6005.05	3526.03	-3503.99	584.30	1767139.84	14618402.39	40°15'03.038"N	80°32'45.003"W	3552.38	170.533	0.00	0.00	0.00	
9526.00†	89.111	158.556	6006.60	3625.63	-3597.06	620.85	1767176.39	14618309.36	40°15'02.117"N	80°32'44.538"W	3650.25	170.207	0.00	0.00	0.00	
9626.00†	89.111	158.556	6008.15	3725.24	-3690.13	657.41	1767212.93	14618216.33	40°15'01.195"N	80°32'44.072"W	3748.23	169.899	0.00	0.00	0.00	
9726.00†	89.111	158.556	6009.70	3824.85	-3783.19	693.96	1767249.47	14618123.30	40°15'00.274"N	80°32'43.607"W	3846.31	169.606	0.00	0.00	0.00	
9826.00†	89.111	158.556	6011.25	3924.46	-3876.26	730.52	1767286.01	14618030.27	40°14'59.352"N	80°32'43.142"W	3944.50	169.327	0.00	0.00	0.00	
9926.00†	89.111	158.556	6012.80	4024.07	-3969.33	767.07	1767322.55	14617937.24	40°14'58.431"N	80°32'42.676"W	4042.76	169.062	0.00	0.00	0.00	
10026.00†	89.111	158.556	6014.35	4123.68	-4062.39	803.63	1767359.09	14617844.21	40°14'57.509"N	80°32'42.211"W	4141.12	168.810	0.00	0.00	0.00	



Planned Wellpath Report

Brooke County Parks BRK 6H PWP Rev-C.0
Page 6 of 8

RECEIVED
Office of Oil and Gas

JUN 9 2017

WV Department of
Environmental Protection



REFERENCE WELLPATH IDENTIFICATION			
Operator	SOUTHWESTERN ENERGY	Slot	Slot #06
Area	Brooke County, WV	Well	Brooke County Parks BRK 6H
Field	Brooke	Wellbore	Brooke County Parks BRK 6H PWB
Facility	Brooke County Parks BRK Pad		

WELLPATH DATA (164 stations) † = interpolated/extrapolated station																
MD	Inclination	Azimuth	TVD	Vert Sect	North	East	Grid East	Grid North	Latitude	Longitude	Closure Dist	Closure Dir	DLS	Build Rate	Turn Rate	Comments
[ft]	[°]	[°]	[ft]	[ft]	[ft]	[ft]	[US ft]	[US ft]			[ft]	[°]	[°/100ft]	[°/100ft]	[°/100ft]	
10126.00†	89.111	158.556	6015.90	4223.28	-4155.46	840.18	1767395.63	14617751.18	40°14'56.588"N	80°32'41.746"W	4239.54	168.570	0.00	0.00	0.00	
10226.00†	89.111	158.556	6017.45	4322.89	-4248.53	876.74	1767432.17	14617658.15	40°14'55.666"N	80°32'41.281"W	4338.04	168.340	0.00	0.00	0.00	
10326.00†	89.111	158.556	6019.01	4422.50	-4341.59	913.29	1767468.71	14617565.11	40°14'54.745"N	80°32'40.815"W	4436.61	168.121	0.00	0.00	0.00	
10426.00†	89.111	158.556	6020.56	4522.11	-4434.66	949.85	1767505.25	14617472.08	40°14'53.823"N	80°32'40.350"W	4535.24	167.911	0.00	0.00	0.00	
10526.00†	89.111	158.556	6022.11	4621.72	-4527.72	986.40	1767541.79	14617379.05	40°14'52.901"N	80°32'39.885"W	4633.93	167.710	0.00	0.00	0.00	
10626.00†	89.111	158.556	6023.66	4721.33	-4620.79	1022.95	1767578.33	14617286.02	40°14'51.980"N	80°32'39.420"W	4732.67	167.517	0.00	0.00	0.00	
10726.00†	89.111	158.556	6025.21	4820.93	-4713.86	1059.51	1767614.87	14617192.99	40°14'51.058"N	80°32'38.954"W	4831.46	167.332	0.00	0.00	0.00	
10826.00†	89.111	158.556	6026.76	4920.54	-4806.92	1096.06	1767651.41	14617099.96	40°14'50.137"N	80°32'38.489"W	4930.30	167.155	0.00	0.00	0.00	
10926.00†	89.111	158.556	6028.31	5020.15	-4899.99	1132.62	1767687.96	14617006.93	40°14'49.215"N	80°32'38.024"W	5029.19	166.985	0.00	0.00	0.00	
11026.00†	89.111	158.556	6029.86	5119.76	-4993.06	1169.17	1767724.50	14616913.90	40°14'48.294"N	80°32'37.559"W	5128.12	166.821	0.00	0.00	0.00	
11126.00†	89.111	158.556	6031.41	5219.37	-5086.12	1205.73	1767761.04	14616820.87	40°14'47.372"N	80°32'37.093"W	5227.09	166.664	0.00	0.00	0.00	
11226.00†	89.111	158.556	6032.96	5318.98	-5179.19	1242.28	1767797.58	14616727.84	40°14'46.451"N	80°32'36.628"W	5326.09	166.512	0.00	0.00	0.00	
11326.00†	89.111	158.556	6034.51	5418.59	-5272.25	1278.84	1767834.12	14616634.81	40°14'45.529"N	80°32'36.163"W	5425.14	166.366	0.00	0.00	0.00	
11426.00†	89.111	158.556	6036.06	5518.19	-5365.32	1315.39	1767870.66	14616541.78	40°14'44.608"N	80°32'35.698"W	5524.21	166.225	0.00	0.00	0.00	
11526.00†	89.111	158.556	6037.62	5617.80	-5458.39	1351.95	1767907.20	14616448.75	40°14'43.686"N	80°32'35.232"W	5623.32	166.089	0.00	0.00	0.00	
11626.00†	89.111	158.556	6039.17	5717.41	-5551.45	1388.50	1767943.74	14616355.72	40°14'42.765"N	80°32'34.767"W	5722.46	165.958	0.00	0.00	0.00	
11726.00†	89.111	158.556	6040.72	5817.02	-5644.52	1425.06	1767980.28	14616262.69	40°14'41.843"N	80°32'34.302"W	5821.63	165.831	0.00	0.00	0.00	
11826.00†	89.111	158.556	6042.27	5916.63	-5737.59	1461.61	1768016.82	14616169.66	40°14'40.922"N	80°32'33.837"W	5920.83	165.708	0.00	0.00	0.00	
11926.00†	89.111	158.556	6043.82	6016.24	-5830.65	1498.17	1768053.36	14616076.62	40°14'40.000"N	80°32'33.372"W	6020.05	165.590	0.00	0.00	0.00	
12026.00†	89.111	158.556	6045.37	6115.84	-5923.72	1534.72	1768089.90	14615983.59	40°14'39.079"N	80°32'32.906"W	6119.30	165.475	0.00	0.00	0.00	
12126.00†	89.111	158.556	6046.92	6215.45	-6016.79	1571.28	1768126.44	14615890.56	40°14'38.157"N	80°32'32.441"W	6218.57	165.364	0.00	0.00	0.00	
12226.00†	89.111	158.556	6048.47	6315.06	-6109.85	1607.83	1768162.98	14615797.53	40°14'37.236"N	80°32'31.976"W	6317.86	165.257	0.00	0.00	0.00	
12326.00†	89.111	158.556	6050.02	6414.67	-6202.92	1644.39	1768199.53	14615704.50	40°14'36.314"N	80°32'31.511"W	6417.18	165.152	0.00	0.00	0.00	
12426.00†	89.111	158.556	6051.57	6514.28	-6295.98	1680.94	1768236.07	14615611.47	40°14'35.393"N	80°32'31.046"W	6516.52	165.051	0.00	0.00	0.00	
12526.00†	89.111	158.556	6053.12	6613.89	-6389.05	1717.50	1768272.61	14615518.44	40°14'34.471"N	80°32'30.580"W	6615.87	164.954	0.00	0.00	0.00	
12626.00†	89.111	158.556	6054.67	6713.50	-6482.12	1754.05	1768309.15	14615425.41	40°14'33.550"N	80°32'30.115"W	6715.25	164.858	0.00	0.00	0.00	
12726.00†	89.111	158.556	6056.22	6813.10	-6575.18	1790.60	1768345.69	14615332.38	40°14'32.628"N	80°32'29.650"W	6814.64	164.766	0.00	0.00	0.00	
12826.00†	89.111	158.556	6057.78	6912.71	-6668.25	1827.16	1768382.23	14615239.35	40°14'31.706"N	80°32'29.185"W	6914.05	164.677	0.00	0.00	0.00	
12926.00†	89.111	158.556	6059.33	7012.32	-6761.32	1863.71	1768418.77	14615146.32	40°14'30.785"N	80°32'28.720"W	7013.47	164.589	0.00	0.00	0.00	
13026.00†	89.111	158.556	6060.88	7111.93	-6854.38	1900.27	1768455.31	14615053.29	40°14'29.863"N	80°32'28.255"W	7112.92	164.505	0.00	0.00	0.00	



RECEIVED
Office of Oil and Gas

JUN 9 2017

WV Department of
Environmental Protection

Planned Wellpath Report

Brooke County Parks BRK 6H PWP Rev-C.0
Page 7 of 8



REFERENCE WELLPATH IDENTIFICATION			
Operator	SOUTHWESTERN ENERGY	Slot	Slot #06
Area	Brooke County, WV	Well	Brooke County Parks BRK 6H
Field	Brooke	Wellbore	Brooke County Parks BRK 6H PWB
Facility	Brooke County Parks BRK Pad		

WELLPATH DATA (164 stations) † = interpolated/extrapolated station																
MD [ft]	Inclination [°]	Azimuth [°]	TVD [ft]	Vert Sect [ft]	North [ft]	East [ft]	Grid East [US ft]	Grid North [US ft]	Latitude	Longitude	Closure Dist [ft]	Closure Dir [°]	DLS [°/100ft]	Build Rate [°/100ft]	Turn Rate [°/100ft]	Comments
13126.00†	89.111	158.556	6062.43	7211.54	-6947.45	1936.82	1768491.85	14614960.26	40°14'28.942"N	80°32'27.789"W	7212.37	164.422	0.00	0.00	0.00	
13226.00†	89.111	158.556	6063.98	7311.15	-7040.52	1973.38	1768528.39	14614867.23	40°14'28.020"N	80°32'27.324"W	7311.85	164.342	0.00	0.00	0.00	
13326.00†	89.111	158.556	6065.53	7410.75	-7133.58	2009.93	1768564.93	14614774.20	40°14'27.099"N	80°32'26.859"W	7411.33	164.264	0.00	0.00	0.00	
13426.00†	89.111	158.556	6067.08	7510.36	-7226.65	2046.49	1768601.47	14614681.17	40°14'26.177"N	80°32'26.394"W	7510.83	164.189	0.00	0.00	0.00	
13526.00†	89.111	158.556	6068.63	7609.97	-7319.71	2083.04	1768638.01	14614588.13	40°14'25.256"N	80°32'25.929"W	7610.34	164.115	0.00	0.00	0.00	
13626.00†	89.111	158.556	6070.18	7709.58	-7412.78	2119.60	1768674.56	14614495.10	40°14'24.334"N	80°32'25.464"W	7709.86	164.043	0.00	0.00	0.00	
13726.00†	89.111	158.556	6071.73	7809.19	-7505.85	2156.15	1768711.10	14614402.07	40°14'23.413"N	80°32'24.999"W	7809.40	163.973	0.00	0.00	0.00	
13826.00†	89.111	158.556	6073.28	7908.80	-7598.91	2192.71	1768747.64	14614309.04	40°14'22.491"N	80°32'24.533"W	7908.95	163.904	0.00	0.00	0.00	
13926.00†	89.111	158.556	6074.83	8008.40	-7691.98	2229.26	1768784.18	14614216.01	40°14'21.570"N	80°32'24.068"W	8008.51	163.838	0.00	0.00	0.00	
14026.00†	89.111	158.556	6076.39	8108.01	-7785.05	2265.82	1768820.72	14614122.98	40°14'20.648"N	80°32'23.603"W	8108.07	163.773	0.00	0.00	0.00	
14126.00†	89.111	158.556	6077.94	8207.62	-7878.11	2302.37	1768857.26	14614029.95	40°14'19.727"N	80°32'23.138"W	8207.65	163.709	0.00	0.00	0.00	
14226.00†	89.111	158.556	6079.49	8307.23	-7971.18	2338.93	1768893.80	14613936.92	40°14'18.805"N	80°32'22.673"W	8307.24	163.647	0.00	0.00	0.00	
14326.00†	89.111	158.556	6081.04	8406.84	-8064.25	2375.48	1768930.34	14613843.89	40°14'17.883"N	80°32'22.208"W	8406.84	163.587	0.00	0.00	0.00	
14388.04	89.111	158.556	6082.00 ²	8468.64	-8121.99	2398.16	1768953.01	14613786.17	40°14'17.312"N	80°32'21.919"W	8468.64	163.550	0.00	0.00	0.00	

HOLE & CASING SECTIONS - Ref Wellbore: Brooke County Parks BRK 6H PWB Ref Wellpath: Brooke County Parks BRK 6H PWP Rev-C.0									
String/Diameter	Start MD [ft]	End MD [ft]	Interval [ft]	Start TVD [ft]	End TVD [ft]	Start N/S [ft]	Start E/W [ft]	End N/S [ft]	End E/W [ft]
20in Conductor	26.00	126.00	100.00	26.00	126.00	0.00	0.00	0.00	0.00
17.5in Open Hole	126.00	350.00	224.00	126.00	350.00	0.00	0.00	0.00	0.00
13.375in Casing Surface	26.00	350.00	324.00	26.00	350.00	0.00	0.00	0.00	0.00
12.25in Open Hole	350.00	1682.00	1332.00	350.00	1682.00	0.00	0.00	0.00	0.00
9.625in Casing Intermediate	26.00	1682.00	1656.00	26.00	1682.00	0.00	0.00	0.00	0.00
8.75in Open Hole	1682.00	5350.00	3668.00	1682.00	5284.14	0.00	0.00	-47.47	-622.30
8.5in Open Hole	5350.00	14388.04	9038.04	5284.14	6082.00	-47.47	-622.30	-8121.99	2398.16
5.5in Casing Production	26.00	14388.04	14362.04	26.00	6082.00	0.00	0.00	-8121.99	2398.16



RECEIVED
Office of Oil and Gas

JUN 9 2017

WV Department of
Environmental Protection

Planned Wellpath Report

Brooke County Parks BRK 6H PWP Rev-C.0
Page 8 of 8



REFERENCE WELLPATH IDENTIFICATION

Operator	SOUTHWESTERN ENERGY	Slot	Slot #06
Area	Brooke County, WV	Well	Brooke County Parks BRK 6H
Field	Brooke	Wellbore	Brooke County Parks BRK 6H PWB
Facility	Brooke County Parks BRK Pad		

TARGETS

Name	MD [ft]	TVD [ft]	North [ft]	East [ft]	Grid East [US ft]	Grid North [US ft]	Latitude	Longitude	Shape
1) Brooke County Parks BRK 6H LP Rev-7	6392.21	5958.00	-680.56	-524.70	1766031.28	14621224.74	40°15'30.994"N	80°32'59.120"W	point
2) Brooke County Parks BRK 6H BHL Rev-7	14388.04	6082.00	-8121.99	2398.16	1768953.01	14613786.17	40°14'17.312"N	80°32'21.919"W	point

SURVEY PROGRAM - Ref Wellbore: Brooke County Parks BRK 6H PWB Ref Wellpath: Brooke County Parks BRK 6H PWP Rev-C.0

Start MD [ft]	End MD [ft]	Positional Uncertainty Model	Log Name/Comment	Wellbore
26.00	400.00	OWSG EMS rev2 + HRGM	MSS <17-1/2">	Brooke County Parks BRK 6H PWB
400.00	1600.00	BHI NaviTrak (Axial)	APS EM <12-1/4">	Brooke County Parks BRK 6H PWB
1600.00	5350.00	BHI NaviTrak (Axial)	APS EM <8-3/4">	Brooke County Parks BRK 6H PWB
5350.00	14388.04	BHI AutoTrak Curve (Short)	AT Curve <8-1/2">	Brooke County Parks BRK 6H PWB