

Location: Brooke County, WV Slot: Slot #10  
 Field: Brooke Well: Brooke County Parks BRK 10H  
 Facility: Brooke County Parks BRK Pad Wellbore: Brooke County Parks BRK 10H PWB

Plot reference wellpath is Brooke County Parks BRK 10H PWB Ex-04	Grid System: NAD83 / UTM Zone 17 North, US feet
True vertical depths are referenced to SDC 46 (RKB)	* * Wellpath was transformed from a different geoidetic datum
Measured depths are referenced to SDC 46 (RKB)	North Reference: Grid north
SDC 46 (RKB) to Mean Sea Level: 1231.6 feet	Scale: True distance
Mean Sea Level to Mud line (At Slot: Slot #10) -1205.6 feet	Depths are in feet
Coordinates are in feet referenced to Slot	Created by: edsanyar on 2016-10-14
	Database: WA_MPL_EASTERNUS_Deht

Scale 1 inch = 1200

On : 0.00° Inc, 26.00ft MD, 26.00ft TVD, 0.00ft VS  
 20in Conductor : 0.00° Inc, 126.00ft MD, 126.00ft TVD, 0.00ft VS  
 13.375in Casing Surface : 0.00° Inc, 350.00ft MD, 350.00ft TVD, 0.00ft VS

Location Information				
Facility Name	Grid East (US ft)	Grid North (US ft)	Latitude	Longitude
Brooke County Parks BRK Pad	1766555.809	14621905.622	40°15'37.699"N	80°32'52.310"W
Slot	Local N (ft)	Local E (ft)	Latitude	Longitude
Slot #10	-24.97	24.39	1766579.989	14621880.660
SDC 46 (RKB) to Mud line (At Slot: Slot #10)			26ft	
Mean Sea Level to Mud line (At Slot: Slot #10)			-1205.6ft	
SDC 46 (RKB) to Mean Sea Level			1231.6ft	

9.625in Casing Intermediate : 0.00° Inc, 1682.00ft MD, 1682.00ft TVD, 0.00ft VS

KOP 1 : 0.00° Inc, 2792.50ft MD, 2792.50ft TVD, 0.00ft VS

2.00"/100ft

End of Build : 15.00° Inc, 3542.50ft MD, 3533.96ft TVD, -11.14ft VS

RECEIVED  
Office of Oil and Gas  
JUN 9 2017  
WV Department of  
Environmental Protection

Curve KOP : 15.00° Inc, 5392.06ft MD, 5320.50ft TVD, -65.78ft VS

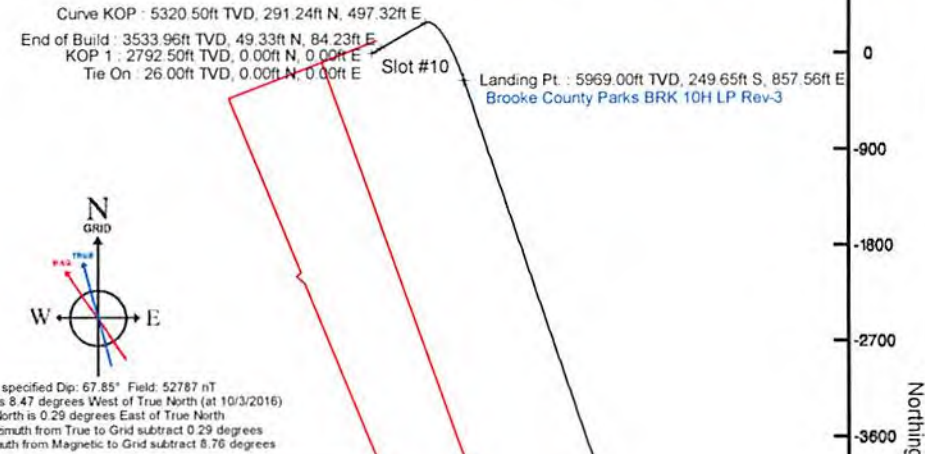
9.00"/100ft

Landing Pt : 89.26° Inc, 6417.44ft MD, 5969.00ft TVD, 574.48ft VS

Brooke County Parks BRK 10H LP Rev-3

Scale 1 inch = 1800

Easting (ft) -2700 -1800 -900 0 900 1800 2700 3600

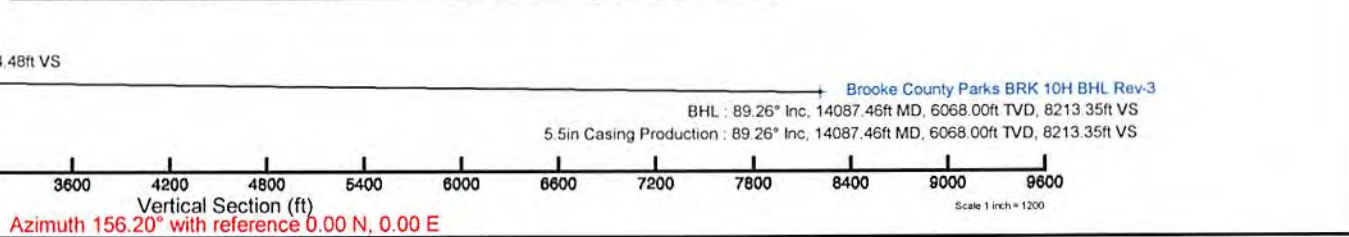


Well Profile Data							
Design Comment	MD (ft)	Inc (°)	Az (°)	TVD (ft)	Local N (ft)	Local E (ft)	DLS (°/100ft)
Tie On	26.00	0.000	59.646	26.00	0.00	0.00	0.00
KOP 1	2792.50	0.000	59.646	2792.50	0.00	0.00	0.00
End of Build	3542.50	15.000	59.646	3533.96	49.33	84.23	2.00
Curve KOP	5392.06	15.000	59.646	5320.50	291.24	497.32	0.00
Landing Pt	6417.44	89.260	161.311	5969.00	-249.65	857.56	9.00
BHL	14087.46	89.260	161.311	6068.00	-7514.64	3315.03	0.00

Targets							
Name	MD (ft)	TVD (ft)	Local N (ft)	Local E (ft)	Grid East (US ft)	Grid North (US ft)	Latitude
Brooke County Parks BRK 10H LP Rev-3	6417.44	5969.00	-249.65	857.56	1767437.22	14621831.11	40°15'34.94"N
Brooke County Parks BRK 10H BHL Rev-3	14087.46	6068.00	-7514.64	3315.03	1769991.75	14614368.91	40°14'23.02"N

Hole and Casing Sections									
Name	Start MD (ft)	End MD (ft)	Interval (ft)	Start TVD (ft)	End TVD (ft)	Start Local N (ft)	End Local N (ft)	Start Local E (ft)	End Local E (ft)
20in Conductor	26.00	126.00	100.00	26.00	126.00	0.00	0.00	0.00	0.00
17.5in Open Hole	126.00	350.00	224.00	126.00	350.00	0.00	0.00	0.00	0.00
11.375in Casing Surface	26.00	350.00	324.00	26.00	350.00	0.00	0.00	0.00	0.00
12.25in Open Hole	350.00	1682.00	1332.00	350.00	1682.00	0.00	0.00	0.00	0.00
9.625in Casing Intermediate	26.00	1682.00	1656.00	26.00	1682.00	0.00	0.00	0.00	0.00
8.5in Open Hole	1682.00	5350.00	3668.00	1682.00	5279.87	0.00	0.00	280.74	487.82
8.5in Open Hole	5350.00	14087.46	8737.46	5279.87	8068.00	295.74	487.82	-714.64	3315.03
5.5in Casing Production	26.00	14087.46	14061.46	26.00	6068.00	0.00	0.00	-714.64	3315.03

Survey Program					
Start MD (ft)	End MD (ft)	Tool	Model	Log Name/Comment	Wellbore
26.00	350.00	CWISG EMS rev2	CWISG EMS rev2 + HRCM	MES <17.12">	Brooke County Parks BRK 10H PWB
350.00	1650.00	BH NavTrak	BH NavTrak (Azal)	APS EM <12.14">	Brooke County Parks BRK 10H PWB
1650.00	5350.00	BH NavTrak	BH NavTrak (Azal)	APS EM <8.34">	Brooke County Parks BRK 10H PWB
5350.00	14087.46	BH AutoTrak Curve	BH AutoTrak Curve (Short)	AT Curve <8.17">	Brooke County Parks BRK 10H PWB





# Planned Wellpath Report

Brooke County Parks BRK 10H PWP Ex-04  
Page 1 of 8



## REFERENCE WELLPATH IDENTIFICATION

Operator	SOUTHWESTERN ENERGY	Slot	Slot #10
Area	Brooke County, WV	Well	Brooke County Parks BRK 10H
Field	Brooke	Wellbore	Brooke County Parks BRK 10H PWB
Facility	Brooke County Parks BRK Pad		

## REPORT SETUP INFORMATION

Projection System	NAD83 / UTM Zone 17 North, US feet	Software System	WellArchitect® 5.0
North Reference	Grid	User	Edsaryar
Scale	0.999618	Report Generated	10/14/2016 at 2:10:59 PM
Convergence at slot	0.30° East	Database/Source file	WA_MPL_EASTERNUS_Defn/Brooke_County_Parks_BRK_10H_PWP_Ex-04.xml

## WELLPATH LOCATION

	Local coordinates		Grid coordinates		Geographic coordinates	
	North[ft]	East[ft]	Easting[US ft]	Northing[US ft]	Latitude	Longitude
Slot Location	-24.97	24.39	1766579.99	14621880.66	40°15'37.451"N	80°32'51.997"W
Facility Reference Pt			1766555.61	14621905.62	40°15'37.699"N	80°32'52.310"W
Field Reference Pt			0.00	0.00	0°00'00.000"	85°29'19.478"W

## WELLPATH DATUM

Calculation method	Minimum curvature	SDC 46 (RKB) to Facility Vertical Datum	1231.60ft
Horizontal Reference Pt	Slot	SDC 46 (RKB) to Mean Sea Level	1231.60ft
Vertical Reference Pt	SDC 46 (RKB)	SDC 46 (RKB) to Mud Line at Slot (Slot #10)	26.00ft
MD Reference Pt	SDC 46 (RKB)	Section Origin	N 0.00, E 0.00 ft
Field Vertical Reference	Mean Sea Level	Section Azimuth	156.20°

RECEIVED  
Office of Oil and Gas

JUN 9 2017

WV Department of  
Environmental Protection



# Planned Wellpath Report

Brooke County Parks BRK 10H PWP Ex-04  
Page 2 of 8

RECEIVED  
Office of Oil and Gas

JUN 9 2017

WV Department of  
Environmental Protection



## REFERENCE WELLPATH IDENTIFICATION

Operator	SOUTHWESTERN ENERGY	Slot	Slot #10
Area	Brooke County, WV	Well	Brooke County Parks BRK 10H
Field	Brooke	Wellbore	Brooke County Parks BRK 10H PWB
Facility	Brooke County Parks BRK Pad		

## WELLPATH DATA (160 stations) † = interpolated/extrapolated station

MD [ft]	Inclination [°]	Azimuth [°]	TVD [ft]	Vert Sect [ft]	North [ft]	East [ft]	Grid East [US ft]	Grid North [US ft]	Latitude	Longitude	Closure Dist [ft]	Closure Dir [°]	DLS [°/100ft]	Build Rate [°/100ft]	Turn Rate [°/100ft]	Comments
0.00†	0.000	59.646	0.00	0.00	0.00	0.00	1766579.99	14621880.66	40°15'37.451"N	80°32'51.997"W	0.00	0.000	0.00	0.00	0.00	
26.00	0.000	59.646	26.00	0.00	0.00	0.00	1766579.99	14621880.66	40°15'37.451"N	80°32'51.997"W	0.00	0.000	0.00	0.00	0.00	
126.00†	0.000	59.646	126.00	0.00	0.00	0.00	1766579.99	14621880.66	40°15'37.451"N	80°32'51.997"W	0.00	0.000	0.00	0.00	0.00	
226.00†	0.000	59.646	226.00	0.00	0.00	0.00	1766579.99	14621880.66	40°15'37.451"N	80°32'51.997"W	0.00	0.000	0.00	0.00	0.00	
326.00†	0.000	59.646	326.00	0.00	0.00	0.00	1766579.99	14621880.66	40°15'37.451"N	80°32'51.997"W	0.00	0.000	0.00	0.00	0.00	
426.00†	0.000	59.646	426.00	0.00	0.00	0.00	1766579.99	14621880.66	40°15'37.451"N	80°32'51.997"W	0.00	0.000	0.00	0.00	0.00	
526.00†	0.000	59.646	526.00	0.00	0.00	0.00	1766579.99	14621880.66	40°15'37.451"N	80°32'51.997"W	0.00	0.000	0.00	0.00	0.00	
626.00†	0.000	59.646	626.00	0.00	0.00	0.00	1766579.99	14621880.66	40°15'37.451"N	80°32'51.997"W	0.00	0.000	0.00	0.00	0.00	
726.00†	0.000	59.646	726.00	0.00	0.00	0.00	1766579.99	14621880.66	40°15'37.451"N	80°32'51.997"W	0.00	0.000	0.00	0.00	0.00	
826.00†	0.000	59.646	826.00	0.00	0.00	0.00	1766579.99	14621880.66	40°15'37.451"N	80°32'51.997"W	0.00	0.000	0.00	0.00	0.00	
926.00†	0.000	59.646	926.00	0.00	0.00	0.00	1766579.99	14621880.66	40°15'37.451"N	80°32'51.997"W	0.00	0.000	0.00	0.00	0.00	
1026.00†	0.000	59.646	1026.00	0.00	0.00	0.00	1766579.99	14621880.66	40°15'37.451"N	80°32'51.997"W	0.00	0.000	0.00	0.00	0.00	
1126.00†	0.000	59.646	1126.00	0.00	0.00	0.00	1766579.99	14621880.66	40°15'37.451"N	80°32'51.997"W	0.00	0.000	0.00	0.00	0.00	Salt Water Top-1126' TVD
1226.00†	0.000	59.646	1226.00	0.00	0.00	0.00	1766579.99	14621880.66	40°15'37.451"N	80°32'51.997"W	0.00	0.000	0.00	0.00	0.00	
1326.00†	0.000	59.646	1326.00	0.00	0.00	0.00	1766579.99	14621880.66	40°15'37.451"N	80°32'51.997"W	0.00	0.000	0.00	0.00	0.00	
1426.00†	0.000	59.646	1426.00	0.00	0.00	0.00	1766579.99	14621880.66	40°15'37.451"N	80°32'51.997"W	0.00	0.000	0.00	0.00	0.00	
1526.00†	0.000	59.646	1526.00	0.00	0.00	0.00	1766579.99	14621880.66	40°15'37.451"N	80°32'51.997"W	0.00	0.000	0.00	0.00	0.00	
1626.00†	0.000	59.646	1626.00	0.00	0.00	0.00	1766579.99	14621880.66	40°15'37.451"N	80°32'51.997"W	0.00	0.000	0.00	0.00	0.00	
1632.00†	0.000	59.646	1632.00	0.00	0.00	0.00	1766579.99	14621880.66	40°15'37.451"N	80°32'51.997"W	0.00	0.000	0.00	0.00	0.00	Big Injun Base-1632' TVD
1726.00†	0.000	59.646	1726.00	0.00	0.00	0.00	1766579.99	14621880.66	40°15'37.451"N	80°32'51.997"W	0.00	0.000	0.00	0.00	0.00	
1826.00†	0.000	59.646	1826.00	0.00	0.00	0.00	1766579.99	14621880.66	40°15'37.451"N	80°32'51.997"W	0.00	0.000	0.00	0.00	0.00	
1926.00†	0.000	59.646	1926.00	0.00	0.00	0.00	1766579.99	14621880.66	40°15'37.451"N	80°32'51.997"W	0.00	0.000	0.00	0.00	0.00	
1976.00†	0.000	59.646	1976.00	0.00	0.00	0.00	1766579.99	14621880.66	40°15'37.451"N	80°32'51.997"W	0.00	0.000	0.00	0.00	0.00	Berea-1976' TVD
2026.00†	0.000	59.646	2026.00	0.00	0.00	0.00	1766579.99	14621880.66	40°15'37.451"N	80°32'51.997"W	0.00	0.000	0.00	0.00	0.00	
2126.00†	0.000	59.646	2126.00	0.00	0.00	0.00	1766579.99	14621880.66	40°15'37.451"N	80°32'51.997"W	0.00	0.000	0.00	0.00	0.00	
2226.00†	0.000	59.646	2226.00	0.00	0.00	0.00	1766579.99	14621880.66	40°15'37.451"N	80°32'51.997"W	0.00	0.000	0.00	0.00	0.00	
2326.00†	0.000	59.646	2326.00	0.00	0.00	0.00	1766579.99	14621880.66	40°15'37.451"N	80°32'51.997"W	0.00	0.000	0.00	0.00	0.00	
2426.00†	0.000	59.646	2426.00	0.00	0.00	0.00	1766579.99	14621880.66	40°15'37.451"N	80°32'51.997"W	0.00	0.000	0.00	0.00	0.00	
2526.00†	0.000	59.646	2526.00	0.00	0.00	0.00	1766579.99	14621880.66	40°15'37.451"N	80°32'51.997"W	0.00	0.000	0.00	0.00	0.00	
2626.00†	0.000	59.646	2626.00	0.00	0.00	0.00	1766579.99	14621880.66	40°15'37.451"N	80°32'51.997"W	0.00	0.000	0.00	0.00	0.00	



# Planned Wellpath Report

Brooke County Parks BRK 10H PWP Ex-04

WV Department of Environmental Protection



RECEIVED  
Office of Oil and Gas  
JUN 9 2017

## REFERENCE WELLPATH IDENTIFICATION

Operator	SOUTHWESTERN ENERGY
Area	Brooke County, WV
Field	Brooke
Facility	Brooke County Parks BRK Pad
Slot	Slot #10

**WELLPATH DATA (160 stations)** † = interpolated/extrapolated station

MD	Inclination	Azimuth	TVD	Vert Sect	North	East	Grid East	Grid North	US ft	US ft	Longitude	Latitude	Closure	Dist	Dir	DLS	Build Rate	Turn Rate	Comments
(ft)	(ft)	(ft)	(ft)	(ft)	(ft)	(ft)	(ft)	(ft)	(ft)	(ft)	(ft)	(ft)	(ft)	(ft)	(ft)	(ft)	(ft)	(ft)	(ft)
2726.00	0.000	59.646	2726.00	0.00	0.00	0.00	1766579.99	14621880.66	40°15'37.451"N	80°32'51.997"W	0.00	0.00	0.00	0.00	0.00	0.00	0.00	0.00	0.00
2792.50	0.000	59.646	2792.50	0.00	0.00	0.00	1766579.99	14621880.66	40°15'37.451"N	80°32'51.997"W	0.00	0.00	0.00	0.00	0.00	0.00	0.00	0.00	0.00
2826.00	0.670	59.646	2826.00	-0.02	0.10	0.17	1766580.16	14621880.76	40°15'37.452"N	80°32'51.995"W	0.20	0.20	59.646	2.00	2.00	178.03	0.00	0.00	0.00
2926.00	2.670	59.646	2925.95	-0.36	1.57	2.68	1766582.67	14621882.23	40°15'37.466"N	80°32'51.962"W	3.11	3.11	59.646	2.00	2.00	0.00	0.00	0.00	0.00
3026.00	4.670	59.646	3025.74	-1.09	4.81	8.21	1766588.19	14621885.46	40°15'37.498"N	80°32'51.891"W	9.51	9.51	59.646	2.00	2.00	0.00	0.00	0.00	0.00
3126.00	6.670	59.646	3125.25	-2.21	9.80	16.73	1766596.72	14621890.46	40°15'37.547"N	80°32'51.781"W	19.39	19.39	59.646	2.00	2.00	0.00	0.00	0.00	0.00
3226.00	8.670	59.646	3224.35	-3.74	16.54	28.25	1766608.23	14621897.20	40°15'37.613"N	80°32'51.632"W	32.74	32.74	59.646	2.00	2.00	0.00	0.00	0.00	0.00
3326.00	10.670	59.646	3322.92	-5.65	25.03	42.74	1766622.72	14621905.68	40°15'37.696"N	80°32'51.444"W	49.53	49.53	59.646	2.00	2.00	0.00	0.00	0.00	0.00
3426.00	12.670	59.646	3420.85	-7.96	35.25	60.20	1766640.16	14621915.90	40°15'37.796"N	80°32'51.218"W	69.76	69.76	59.646	2.00	2.00	0.00	0.00	0.00	0.00
3526.00	14.670	59.646	3518.01	-10.66	47.19	80.59	1766660.55	14621927.84	40°15'37.913"N	80°32'50.954"W	93.39	93.39	59.646	2.00	2.00	0.00	0.00	0.00	0.00
3626.00	15.000	59.646	3614.62	-13.61	60.25	102.88	1766682.83	14621940.89	40°15'38.041"N	80°32'50.666"W	119.23	119.23	59.646	0.00	0.00	0.00	0.00	0.00	0.00
3726.00	15.000	59.646	3711.21	-16.56	73.33	125.22	1766705.16	14621953.96	40°15'38.169"N	80°32'50.377"W	145.11	145.11	59.646	0.00	0.00	0.00	0.00	0.00	0.00
3826.00	15.000	59.646	3807.80	-19.52	86.41	147.55	1766727.48	14621967.04	40°15'38.297"N	80°32'50.088"W	170.99	170.99	59.646	0.00	0.00	0.00	0.00	0.00	0.00
3926.00	15.000	59.646	3904.39	-22.47	99.49	169.89	1766749.81	14621980.11	40°15'38.426"N	80°32'49.799"W	196.87	196.87	59.646	0.00	0.00	0.00	0.00	0.00	0.00
4026.00	15.000	59.646	4000.99	-25.43	112.57	192.22	1766772.14	14621993.18	40°15'38.554"N	80°32'49.510"W	222.76	222.76	59.646	0.00	0.00	0.00	0.00	0.00	0.00
4126.00	15.000	59.646	4097.58	-28.38	125.65	214.55	1766794.46	14622006.26	40°15'38.682"N	80°32'49.221"W	248.64	248.64	59.646	0.00	0.00	0.00	0.00	0.00	0.00
4226.00	15.000	59.646	4194.17	-31.33	138.73	236.89	1766816.79	14622019.33	40°15'38.810"N	80°32'48.932"W	274.52	274.52	59.646	0.00	0.00	0.00	0.00	0.00	0.00
4326.00	15.000	59.646	4290.76	-34.29	151.81	259.22	1766839.11	14622032.41	40°15'38.938"N	80°32'48.643"W	300.40	300.40	59.646	0.00	0.00	0.00	0.00	0.00	0.00
4426.00	15.000	59.646	4387.36	-37.24	164.88	281.56	1766861.44	14622045.48	40°15'39.066"N	80°32'48.355"W	326.28	326.28	59.646	0.00	0.00	0.00	0.00	0.00	0.00
4526.00	15.000	59.646	4483.95	-40.20	177.96	303.89	1766883.76	14622058.56	40°15'39.194"N	80°32'48.066"W	352.16	352.16	59.646	0.00	0.00	0.00	0.00	0.00	0.00
4626.00	15.000	59.646	4580.54	-43.15	191.04	326.22	1766906.09	14622071.63	40°15'39.322"N	80°32'47.777"W	378.05	378.05	59.646	0.00	0.00	0.00	0.00	0.00	0.00
4726.00	15.000	59.646	4677.14	-46.11	204.12	348.56	1766928.41	14622084.70	40°15'39.451"N	80°32'47.488"W	403.93	403.93	59.646	0.00	0.00	0.00	0.00	0.00	0.00
4826.00	15.000	59.646	4773.73	-49.06	217.20	370.89	1766950.74	14622097.78	40°15'39.579"N	80°32'47.199"W	429.81	429.81	59.646	0.00	0.00	0.00	0.00	0.00	0.00
4926.00	15.000	59.646	4870.32	-52.01	230.28	393.23	1766973.06	14622110.85	40°15'39.707"N	80°32'46.910"W	455.69	455.69	59.646	0.00	0.00	0.00	0.00	0.00	0.00
5026.00	15.000	59.646	4966.91	-54.97	243.36	415.56	1766995.39	14622123.93	40°15'39.835"N	80°32'46.621"W	481.57	481.57	59.646	0.00	0.00	0.00	0.00	0.00	0.00
5126.00	15.000	59.646	5063.51	-57.92	256.44	437.89	1767017.71	14622137.00	40°15'39.963"N	80°32'46.332"W	507.46	507.46	59.646	0.00	0.00	0.00	0.00	0.00	0.00
5226.00	15.000	59.646	5160.10	-60.88	269.52	460.23	1767040.04	14622150.08	40°15'40.091"N	80°32'46.043"W	533.34	533.34	59.646	0.00	0.00	0.00	0.00	0.00	0.00
5326.00	15.000	59.646	5256.69	-63.83	282.60	482.56	1767062.37	14622163.15	40°15'40.219"N	80°32'45.754"W	559.22	559.22	59.646	0.00	0.00	0.00	0.00	0.00	0.00
5392.06	15.000	59.646	5320.50	-65.78	291.24	497.32	1767077.11	14622177.19	40°15'40.304"N	80°32'45.563"W	576.32	576.32	59.646	0.00	0.00	0.00	0.00	0.00	0.00



# Planned Wellpath Report

Brooke County Parks BRK 10H PWP Ex-04  
Page 4 of 8

RECEIVED  
Office of Oil and Gas

JUN 9 2017

WV Department of  
Environmental Protection



## REFERENCE WELLPATH IDENTIFICATION

Operator	SOUTHWESTERN ENERGY	Slot	Slot #10
Area	Brooke County, WV	Well	Brooke County Parks BRK 10H
Field	Brooke	Wellbore	Brooke County Parks BRK 10H PWB
Facility	Brooke County Parks BRK Pad		

## WELLPATH DATA (160 stations) † = interpolated/extrapolated station

MD [ft]	Inclination [°]	Azimuth [°]	TVD [ft]	Vert Sect [ft]	North [ft]	East [ft]	Grid East [US ft]	Grid North [US ft]	Latitude	Longitude	Closure Dist [ft]	Closure Dir [°]	DLS [°/100ft]	Build Rate [°/100ft]	Turn Rate [°/100ft]	Comments
5426.00†	14.694	71.527	5353.31	-65.88	294.82	505.19	1767084.99	14622175.37	40°15'40.339"N	80°32'45.461"W	584.92	59.733	9.00	-0.90	35.01	
5438.08†	14.734	75.806	5365.00	-65.48	295.68	508.13	1767087.93	14622176.23	40°15'40.347"N	80°32'45.423"W	587.90	59.805	9.00	0.33	35.42	Jpper Rhinestreet-5365' TVD
5526.00†	17.182	103.502	5449.65	-55.73	295.39	531.64	1767111.42	14622175.94	40°15'40.343"N	80°32'45.120"W	608.19	60.942	9.00	2.78	31.50	
5553.69†	18.579	110.232	5476.00	-50.19	292.91	539.75	1767119.53	14622173.46	40°15'40.318"N	80°32'45.016"W	614.11	61.512	9.00	5.05	24.30	Lower Rhinestreet-5476' TVD
5617.75†	22.524	122.282	5536.00	-32.90	282.82	559.72	1767139.49	14622163.37	40°15'40.218"N	80°32'44.759"W	627.12	63.193	9.00	6.16	18.81	Basal Rhinestreet-5536' TVD
5626.00†	23.085	123.536	5543.60	-30.23	281.08	562.40	1767142.18	14622161.64	40°15'40.200"N	80°32'44.724"W	628.73	63.444	9.00	6.80	15.20	
5699.73†	28.452	132.563	5610.00	-1.94	261.20	587.41	1767167.18	14622141.76	40°15'40.002"N	80°32'44.403"W	642.87	66.027	9.00	7.28	12.24	Cashaqua-5610' TVD
5726.00†	30.478	135.045	5632.87	10.01	252.25	596.73	1767176.49	14622132.81	40°15'39.914"N	80°32'44.283"W	647.86	67.085	9.00	7.71	9.45	
5763.87†	33.469	138.136	5665.00	28.90	237.67	610.49	1767190.25	14622118.24	40°15'39.769"N	80°32'44.107"W	655.12	68.729	9.00	7.90	8.16	Middlesex-5665' TVD
5794.28†	35.918	140.281	5690.00	45.45	224.56	621.79	1767201.54	14622105.14	40°15'39.639"N	80°32'43.962"W	661.10	70.143	9.00	8.06	7.06	Lower Middlesex-5690' TVD
5826.00†	38.510	142.263	5715.26	63.99	209.59	633.78	1767213.53	14622090.17	40°15'39.490"N	80°32'43.808"W	667.54	71.701	9.00	8.17	6.25	
5830.79†	38.904	142.543	5719.00	66.90	207.22	635.61	1767215.35	14622087.80	40°15'39.467"N	80°32'43.785"W	668.53	71.943	9.00	8.23	5.84	Burket-5719' TVD
5856.89†	41.062	143.987	5739.00	83.25	193.78	645.64	1767225.38	14622074.36	40°15'39.333"N	80°32'43.656"W	674.09	73.294	9.00	8.27	5.53	Tully-5739' TVD
5926.00†	46.850	147.275	5788.73	130.38	154.17	672.64	1767252.37	14622034.77	40°15'38.940"N	80°32'43.311"W	690.08	77.091	9.00	8.37	4.76	
5944.20†	48.388	148.036	5801.00	143.67	142.81	679.83	1767259.55	14622023.42	40°15'38.828"N	80°32'43.219"W	694.67	78.136	9.00	8.45	4.18	Hamilton-5801' TVD
6026.00†	55.355	151.065	5851.48	207.54	87.35	712.34	1767292.05	14621967.97	40°15'38.278"N	80°32'42.803"W	717.67	83.009	9.00	8.52	3.70	
6126.00†	63.956	154.143	5901.96	293.58	10.76	751.91	1767331.61	14621891.42	40°15'37.519"N	80°32'42.298"W	751.99	89.180	9.00	8.60	3.08	
6132.99†	64.560	154.339	5905.00	299.88	5.09	754.65	1767334.35	14621885.75	40°15'37.463"N	80°32'42.263"W	754.67	89.614	9.00	8.64	2.81	Levanna-5905' TVD
6175.45†	68.232	155.494	5922.00	338.77	-30.15	771.14	1767350.83	14621850.53	40°15'37.114"N	80°32'42.052"W	771.73	92.239	9.00	8.65	2.72	Jpper Marcellus-5922' TVD
6226.00†	72.613	156.795	5938.93	386.38	-73.69	790.39	1767370.07	14621807.00	40°15'36.683"N	80°32'41.807"W	793.81	95.327	9.00	8.67	2.57	
6326.00†	81.302	159.206	5961.48	483.65	-163.94	826.81	1767406.48	14621716.78	40°15'35.789"N	80°32'41.343"W	842.90	101.215	9.00	8.69	2.41	
6417.44	89.260	161.311	5969.00†	574.48	-249.65	857.56	1767437.22	14621631.11	40°15'34.941"N	80°32'40.952"W	893.15	106.231	9.00	8.70	2.30	
6426.00†	89.260	161.311	5969.11	583.00	-257.75	860.30	1767439.96	14621623.01	40°15'34.860"N	80°32'40.918"W	898.08	106.679	0.00	0.00	0.00	
6526.00†	89.260	161.311	5970.40	682.59	-352.47	892.34	1767471.98	14621528.33	40°15'33.923"N	80°32'40.511"W	959.43	111.554	0.00	0.00	0.00	
6626.00†	89.260	161.311	5971.69	782.19	-447.19	924.38	1767504.01	14621433.64	40°15'32.985"N	80°32'40.104"W	1026.86	115.816	0.00	0.00	0.00	
6726.00†	89.260	161.311	5972.98	881.78	-541.91	956.42	1767536.04	14621338.96	40°15'32.048"N	80°32'39.697"W	1099.27	119.536	0.00	0.00	0.00	
6826.00†	89.260	161.311	5974.27	980.38	-636.63	988.46	1767568.07	14621244.28	40°15'31.110"N	80°32'39.290"W	1175.73	122.784	0.00	0.00	0.00	
6926.00†	89.260	161.311	5975.56	1080.97	-731.35	1020.50	1767600.09	14621149.59	40°15'30.172"N	80°32'38.883"W	1255.50	125.628	0.00	0.00	0.00	
7026.00†	89.260	161.311	5976.85	1180.56	-826.07	1052.54	1767632.12	14621054.91	40°15'29.235"N	80°32'38.476"W	1337.99	128.126	0.00	0.00	0.00	
7126.00†	89.260	161.311	5978.15	1280.16	-920.79	1084.58	1767664.15	14620960.23	40°15'28.297"N	80°32'38.069"W	1422.73	130.331	0.00	0.00	0.00	



# Planned Wellpath Report

Brooke County Parks BRK 10H PWP Ex-04  
Page 5 of 8

RECEIVED  
Office of Oil and Gas

JUN 9 2017

WV Department of  
Environmental Protection



REFERENCE WELLPATH IDENTIFICATION			
Operator	SOUTHWESTERN ENERGY	Slot	Slot #10
Area	Brooke County, WV	Well	Brooke County Parks BRK 10H
Field	Brooke	Wellbore	Brooke County Parks BRK 10H PWB
Facility	Brooke County Parks BRK Pad		

WELLPATH DATA (160 stations) † = interpolated/extrapolated station																
MD [ft]	Inclination [°]	Azimuth [°]	TVD [ft]	Vert Sect [ft]	North [ft]	East [ft]	Grid East [US ft]	Grid North [US ft]	Latitude	Longitude	Closure Dist [ft]	Closure Dir [°]	DLS [°/100ft]	Build Rate [°/100ft]	Turn Rate [°/100ft]	Comments
7226.00†	89.260	161.311	5979.44	1379.75	-1015.50	1116.62	1767696.18	14620865.54	40°15'27.360"N	80°32'37.662"W	1509.33	132.285	0.00	0.00	0.00	
7326.00†	89.260	161.311	5980.73	1479.35	-1110.22	1148.66	1767728.21	14620770.86	40°15'26.422"N	80°32'37.255"W	1597.50	134.025	0.00	0.00	0.00	
7426.00†	89.260	161.311	5982.02	1578.94	-1204.94	1180.70	1767760.23	14620676.18	40°15'25.484"N	80°32'36.848"W	1686.99	135.582	0.00	0.00	0.00	
7526.00†	89.260	161.311	5983.31	1678.53	-1299.66	1212.74	1767792.26	14620581.50	40°15'24.547"N	80°32'36.441"W	1777.60	136.982	0.00	0.00	0.00	
7626.00†	89.260	161.311	5984.60	1778.13	-1394.38	1244.78	1767824.29	14620486.81	40°15'23.609"N	80°32'36.034"W	1869.16	138.244	0.00	0.00	0.00	
7726.00†	89.260	161.311	5985.89	1877.72	-1489.10	1276.82	1767856.32	14620392.13	40°15'22.671"N	80°32'35.627"W	1961.55	139.389	0.00	0.00	0.00	
7826.00†	89.260	161.311	5987.18	1977.32	-1583.82	1308.86	1767888.34	14620297.45	40°15'21.734"N	80°32'35.220"W	2054.65	140.430	0.00	0.00	0.00	
7926.00†	89.260	161.311	5988.47	2076.91	-1678.54	1340.90	1767920.37	14620202.76	40°15'20.796"N	80°32'34.813"W	2148.37	141.380	0.00	0.00	0.00	
8026.00†	89.260	161.311	5989.76	2176.50	-1773.26	1372.94	1767952.40	14620108.08	40°15'19.859"N	80°32'34.406"W	2242.63	142.251	0.00	0.00	0.00	
8126.00†	89.260	161.311	5991.05	2276.10	-1867.98	1404.98	1767984.43	14620013.40	40°15'18.921"N	80°32'33.999"W	2337.37	143.052	0.00	0.00	0.00	
8226.00†	89.260	161.311	5992.34	2375.69	-1962.70	1437.02	1768016.46	14619918.71	40°15'17.983"N	80°32'33.592"W	2432.53	143.790	0.00	0.00	0.00	
8326.00†	89.260	161.311	5993.63	2475.29	-2057.42	1469.06	1768048.48	14619824.03	40°15'17.046"N	80°32'33.185"W	2528.06	144.472	0.00	0.00	0.00	
8426.00†	89.260	161.311	5994.93	2574.88	-2152.14	1501.10	1768080.51	14619729.35	40°15'16.108"N	80°32'32.778"W	2623.93	145.105	0.00	0.00	0.00	
8526.00†	89.260	161.311	5996.22	2674.47	-2246.86	1533.14	1768112.54	14619634.66	40°15'15.170"N	80°32'32.371"W	2720.09	145.692	0.00	0.00	0.00	
8626.00†	89.260	161.311	5997.51	2774.07	-2341.58	1565.18	1768144.57	14619539.98	40°15'14.233"N	80°32'31.964"W	2816.52	146.240	0.00	0.00	0.00	
8726.00†	89.260	161.311	5998.80	2873.66	-2436.30	1597.22	1768176.59	14619445.30	40°15'13.295"N	80°32'31.557"W	2913.18	146.751	0.00	0.00	0.00	
8826.00†	89.260	161.311	6000.09	2973.26	-2531.02	1629.26	1768208.62	14619350.62	40°15'12.358"N	80°32'31.151"W	3010.07	147.230	0.00	0.00	0.00	
8926.00†	89.260	161.311	6001.38	3072.85	-2625.74	1661.30	1768240.65	14619255.93	40°15'11.420"N	80°32'30.744"W	3107.15	147.679	0.00	0.00	0.00	
9026.00†	89.260	161.311	6002.67	3172.45	-2720.45	1693.34	1768272.68	14619161.25	40°15'10.482"N	80°32'30.337"W	3204.41	148.100	0.00	0.00	0.00	
9126.00†	89.260	161.311	6003.96	3272.04	-2815.17	1725.38	1768304.71	14619066.57	40°15'09.545"N	80°32'29.930"W	3301.84	148.496	0.00	0.00	0.00	
9226.00†	89.260	161.311	6005.25	3371.63	-2909.89	1757.42	1768336.73	14618971.88	40°15'08.607"N	80°32'29.523"W	3399.41	148.870	0.00	0.00	0.00	
9326.00†	89.260	161.311	6006.54	3471.23	-3004.61	1789.46	1768368.76	14618877.20	40°15'07.669"N	80°32'29.116"W	3497.12	149.223	0.00	0.00	0.00	
9426.00†	89.260	161.311	6007.83	3570.82	-3099.33	1821.50	1768400.79	14618782.52	40°15'06.732"N	80°32'28.709"W	3594.96	149.557	0.00	0.00	0.00	
9526.00†	89.260	161.311	6009.12	3670.42	-3194.05	1853.54	1768432.82	14618687.83	40°15'05.794"N	80°32'28.302"W	3692.91	149.873	0.00	0.00	0.00	
9626.00†	89.260	161.311	6010.41	3770.01	-3288.77	1885.58	1768464.84	14618593.15	40°15'04.856"N	80°32'27.895"W	3790.97	150.173	0.00	0.00	0.00	
9726.00†	89.260	161.311	6011.70	3869.60	-3383.49	1917.62	1768496.87	14618498.47	40°15'03.919"N	80°32'27.488"W	3889.12	150.457	0.00	0.00	0.00	
9826.00†	89.260	161.311	6013.00	3969.20	-3478.21	1949.66	1768528.90	14618403.79	40°15'02.981"N	80°32'27.082"W	3987.37	150.728	0.00	0.00	0.00	
9926.00†	89.260	161.311	6014.29	4068.79	-3572.93	1981.70	1768560.93	14618309.10	40°15'02.044"N	80°32'26.675"W	4085.70	150.985	0.00	0.00	0.00	
10026.00†	89.260	161.311	6015.58	4168.39	-3667.65	2013.74	1768592.96	14618214.42	40°15'01.106"N	80°32'26.268"W	4184.11	151.231	0.00	0.00	0.00	
10126.00†	89.260	161.311	6016.87	4267.98	-3762.37	2045.78	1768624.98	14618119.74	40°15'00.168"N	80°32'25.861"W	4282.60	151.465	0.00	0.00	0.00	



RECEIVED  
Office of Oil and Gas

JUN 9 2017

WV Department of  
Environmental Protection

# Planned Wellpath Report

Brooke County Parks BRK 10H PWP Ex-04  
Page 6 of 8



## REFERENCE WELLPATH IDENTIFICATION

Operator	SOUTHWESTERN ENERGY	Slot	Slot #10
Area	Brooke County, WV	Well	Brooke County Parks BRK 10H
Field	Brooke	Wellbore	Brooke County Parks BRK 10H PWB
Facility	Brooke County Parks BRK Pad		

## WELLPATH DATA (160 stations) † = interpolated/extrapolated station

MD [ft]	Inclination [°]	Azimuth [°]	TVD [ft]	Vort Sect [ft]	North [ft]	East [ft]	Grid East [US ft]	Grid North [US ft]	Latitude	Longitude	Closure Dist [ft]	Closure Dir [°]	DLS [°/100ft]	Build Rate [°/100ft]	Turn Rate [°/100ft]	Comments
10226.00†	89.260	161.311	6018.16	4367.57	-3857.09	2077.82	1768657.01	14618025.05	40°14'59.231"N	80°32'25.454"W	4381.15	151.689	0.00	0.00	0.00	
10326.00†	89.260	161.311	6019.45	4467.17	-3951.81	2109.86	1768689.04	14617930.37	40°14'58.293"N	80°32'25.047"W	4479.76	151.902	0.00	0.00	0.00	
10426.00†	89.260	161.311	6020.74	4566.76	-4046.53	2141.90	1768721.07	14617835.69	40°14'57.355"N	80°32'24.640"W	4578.44	152.107	0.00	0.00	0.00	
10526.00†	89.260	161.311	6022.03	4666.36	-4141.25	2173.94	1768753.09	14617741.00	40°14'56.418"N	80°32'24.233"W	4677.17	152.303	0.00	0.00	0.00	
10626.00†	89.260	161.311	6023.32	4765.95	-4235.97	2205.98	1768785.12	14617646.32	40°14'55.480"N	80°32'23.827"W	4775.96	152.491	0.00	0.00	0.00	
10726.00†	89.260	161.311	6024.61	4865.54	-4330.68	2238.02	1768817.15	14617551.64	40°14'54.542"N	80°32'23.420"W	4874.79	152.671	0.00	0.00	0.00	
10826.00†	89.260	161.311	6025.90	4965.14	-4425.40	2270.06	1768849.18	14617456.95	40°14'53.605"N	80°32'23.013"W	4973.67	152.844	0.00	0.00	0.00	
10926.00†	89.260	161.311	6027.19	5064.73	-4520.12	2302.10	1768881.21	14617362.27	40°14'52.667"N	80°32'22.606"W	5072.59	153.010	0.00	0.00	0.00	
11026.00†	89.260	161.311	6028.48	5164.33	-4614.84	2334.14	1768913.23	14617267.59	40°14'51.730"N	80°32'22.199"W	5171.56	153.170	0.00	0.00	0.00	
11126.00†	89.260	161.311	6029.78	5263.92	-4709.56	2366.18	1768945.26	14617172.91	40°14'50.792"N	80°32'21.792"W	5270.56	153.324	0.00	0.00	0.00	
11226.00†	89.260	161.311	6031.07	5363.51	-4804.28	2398.22	1768977.29	14617078.22	40°14'49.854"N	80°32'21.385"W	5369.60	153.472	0.00	0.00	0.00	
11326.00†	89.260	161.311	6032.36	5463.11	-4899.00	2430.26	1769009.32	14616983.54	40°14'48.917"N	80°32'20.979"W	5468.67	153.615	0.00	0.00	0.00	
11426.00†	89.260	161.311	6033.65	5562.70	-4993.72	2462.30	1769041.34	14616888.86	40°14'47.979"N	80°32'20.572"W	5567.78	153.753	0.00	0.00	0.00	
11526.00†	89.260	161.311	6034.94	5662.30	-5088.44	2494.34	1769073.37	14616794.17	40°14'47.041"N	80°32'20.165"W	5666.92	153.886	0.00	0.00	0.00	
11626.00†	89.260	161.311	6036.23	5761.89	-5183.16	2526.38	1769105.40	14616699.49	40°14'46.104"N	80°32'19.758"W	5766.09	154.014	0.00	0.00	0.00	
11726.00†	89.260	161.311	6037.52	5861.48	-5277.88	2558.42	1769137.43	14616604.81	40°14'45.166"N	80°32'19.351"W	5865.28	154.138	0.00	0.00	0.00	
11826.00†	89.260	161.311	6038.81	5961.08	-5372.60	2590.46	1769169.46	14616510.12	40°14'44.228"N	80°32'18.944"W	5964.50	154.258	0.00	0.00	0.00	
11926.00†	89.260	161.311	6040.10	6060.67	-5467.32	2622.50	1769201.48	14616415.44	40°14'43.291"N	80°32'18.538"W	6063.75	154.374	0.00	0.00	0.00	
12026.00†	89.260	161.311	6041.39	6160.27	-5562.04	2654.54	1769233.51	14616320.76	40°14'42.353"N	80°32'18.131"W	6163.02	154.487	0.00	0.00	0.00	
12126.00†	89.260	161.311	6042.68	6259.86	-5656.76	2686.58	1769265.54	14616226.07	40°14'41.416"N	80°32'17.724"W	6262.32	154.595	0.00	0.00	0.00	
12226.00†	89.260	161.311	6043.97	6359.46	-5751.48	2718.62	1769297.57	14616131.39	40°14'40.478"N	80°32'17.317"W	6361.63	154.701	0.00	0.00	0.00	
12326.00†	89.260	161.311	6045.26	6459.05	-5846.20	2750.66	1769329.59	14616036.71	40°14'39.540"N	80°32'16.910"W	6460.97	154.803	0.00	0.00	0.00	
12426.00†	89.260	161.311	6046.55	6558.64	-5940.91	2782.70	1769361.62	14615942.03	40°14'38.603"N	80°32'16.503"W	6560.33	154.902	0.00	0.00	0.00	
12526.00†	89.260	161.311	6047.85	6658.24	-6035.63	2814.74	1769393.65	14615847.34	40°14'37.665"N	80°32'16.097"W	6659.70	154.998	0.00	0.00	0.00	
12626.00†	89.260	161.311	6049.14	6757.83	-6130.35	2846.78	1769425.68	14615752.66	40°14'36.727"N	80°32'15.690"W	6759.10	155.091	0.00	0.00	0.00	
12726.00†	89.260	161.311	6050.43	6857.43	-6225.07	2878.82	1769457.71	14615657.98	40°14'35.790"N	80°32'15.283"W	6858.51	155.182	0.00	0.00	0.00	
12826.00†	89.260	161.311	6051.72	6957.02	-6319.79	2910.86	1769489.73	14615563.29	40°14'34.852"N	80°32'14.876"W	6957.94	155.269	0.00	0.00	0.00	
12926.00†	89.260	161.311	6053.01	7056.61	-6414.51	2942.90	1769521.76	14615468.61	40°14'33.914"N	80°32'14.469"W	7057.38	155.355	0.00	0.00	0.00	
13026.00†	89.260	161.311	6054.30	7156.21	-6509.23	2974.94	1769553.79	14615373.93	40°14'32.977"N	80°32'14.063"W	7156.84	155.438	0.00	0.00	0.00	
13126.00†	89.260	161.311	6055.59	7255.80	-6603.95	3006.98	1769585.82	14615279.24	40°14'32.039"N	80°32'13.656"W	7256.31	155.519	0.00	0.00	0.00	



RECEIVED  
Office of Oil and Gas

JUN 9 2017

WV Department of  
Environmental Protection

# Planned Wellpath Report

Brooke County Parks BRK 10H PWP Ex-04  
Page 7 of 8



## REFERENCE WELLPATH IDENTIFICATION

Operator	SOUTHWESTERN ENERGY	Slot	Slot #10
Area	Brooke County, WV	Well	Brooke County Parks BRK 10H
Field	Brooke	Wellbore	Brooke County Parks BRK 10H PWB
Facility	Brooke County Parks BRK Pad		

## WELLPATH DATA (160 stations) † = interpolated/extrapolated station

MD [ft]	Inclination [°]	Azimuth [°]	TVD [ft]	Vert Sect [ft]	North [ft]	East [ft]	Grid East [US ft]	Grid North [US ft]	Latitude	Longitude	Closure Dist [ft]	Closure Dir [°]	DLS [°/100ft]	Build Rate [°/100ft]	Turn Rate [°/100ft]	Comments
13226.00†	89.260	161.311	6056.88	7355.40	-6698.67	3039.02	1769617.84	14615184.56	40°14'31.101"N	80°32'13.249"W	7355.80	155.597	0.00	0.00	0.00	
13326.00†	89.260	161.311	6058.17	7454.99	-6793.39	3071.06	1769649.87	14615089.88	40°14'30.164"N	80°32'12.842"W	7455.30	155.674	0.00	0.00	0.00	
13426.00†	89.260	161.311	6059.46	7554.58	-6888.11	3103.10	1769681.90	14614995.19	40°14'29.226"N	80°32'12.436"W	7554.82	155.748	0.00	0.00	0.00	
13526.00†	89.260	161.311	6060.75	7654.18	-6982.83	3135.14	1769713.93	14614900.51	40°14'28.288"N	80°32'12.029"W	7654.35	155.821	0.00	0.00	0.00	
13626.00†	89.260	161.311	6062.04	7753.77	-7077.55	3167.18	1769745.96	14614805.83	40°14'27.351"N	80°32'11.622"W	7753.88	155.892	0.00	0.00	0.00	
13726.00†	89.260	161.311	6063.33	7853.37	-7172.27	3199.22	1769777.98	14614711.15	40°14'26.413"N	80°32'11.215"W	7853.43	155.961	0.00	0.00	0.00	
13826.00†	89.260	161.311	6064.63	7952.96	-7266.99	3231.26	1769810.01	14614616.46	40°14'25.476"N	80°32'10.808"W	7953.00	156.028	0.00	0.00	0.00	
13926.00†	89.260	161.311	6065.92	8052.55	-7361.71	3263.30	1769842.04	14614521.78	40°14'24.538"N	80°32'10.402"W	8052.57	156.093	0.00	0.00	0.00	
14026.00†	89.260	161.311	6067.21	8152.15	-7456.43	3295.34	1769874.07	14614427.10	40°14'23.600"N	80°32'09.995"W	8152.15	156.157	0.00	0.00	0.00	
14087.46	89.260	161.311	6068.00 <sup>2</sup>	8213.35	-7514.64	3315.03	1769893.75	14614368.91	40°14'23.024"N	80°32'09.745"W	8213.35	156.196	0.00	0.00	0.00	

## HOLE & CASING SECTIONS - Ref Wellbore: Brooke County Parks BRK 10H PWB Ref Wellpath: Brooke County Parks BRK 10H PWP Ex-04

String/Diameter	Start MD [ft]	End MD [ft]	Interval [ft]	Start TVD [ft]	End TVD [ft]	Start N/S [ft]	Start E/W [ft]	End N/S [ft]	End E/W [ft]
20in Conductor	26.00	126.00	100.00	26.00	126.00	0.00	0.00	0.00	0.00
17.5in Open Hole	126.00	350.00	224.00	126.00	350.00	0.00	0.00	0.00	0.00
13.375in Casing Surface	26.00	350.00	324.00	26.00	350.00	0.00	0.00	0.00	0.00
12.25in Open Hole	350.00	1682.00	1332.00	350.00	1682.00	0.00	0.00	0.00	0.00
9.625in Casing Intermediate	26.00	1682.00	1656.00	26.00	1682.00	0.00	0.00	0.00	0.00
8.75in Open Hole	1682.00	5350.00	3668.00	1682.00	5279.87	0.00	0.00	285.74	487.92
8.5in Open Hole	5350.00	14087.46	8737.46	5279.87	6068.00	285.74	487.92	-7514.64	3315.03
5.5in Casing Production	26.00	14087.46	14061.46	26.00	6068.00	0.00	0.00	-7514.64	3315.03





# Planned Wellpath Report

Brooke County Parks BRK 10H PWP Ex-04  
Page 8 of 8



## REFERENCE WELLPATH IDENTIFICATION

Operator	SOUTHWESTERN ENERGY	Slot	Slot #10
Area	Brooke County, WV	Well	Brooke County Parks BRK 10H
Field	Brooke	Wellbore	Brooke County Parks BRK 10H PWB
Facility	Brooke County Parks BRK Pad		

## TARGETS

Name	MD [ft]	TVD [ft]	North [ft]	East [ft]	Grid East [US ft]	Grid North [US ft]	Latitude	Longitude	Shape
1) Brooke County Parks BRK 10H LP Rev-3	6417.44	5969.00	-249.65	857.56	1767437.22	14621631.11	40°15'34.941"N	80°32'40.952"W	point
2) Brooke County Parks BRK 10H BHL Rev-3	14087.46	6068.00	-7514.64	3315.03	1769893.75	14614368.91	40°14'23.024"N	80°32'09.745"W	point

## SURVEY PROGRAM - Ref Wellbore: Brooke County Parks BRK 10H PWB    Ref Wellpath: Brooke County Parks BRK 10H PWP Ex-04

Start MD [ft]	End MD [ft]	Positional Uncertainty Model	Log Name/Comment	Wellbore
26.00	350.00	OWSG EMS rev2 + HRGM	MSS <17-1/2">	Brooke County Parks BRK 10H PWB
350.00	1650.00	BHI NaviTrak (Axial)	APS EM <12-1/4">	Brooke County Parks BRK 10H PWB
1650.00	5350.00	BHI NaviTrak (Axial)	APS EM <8-3/4">	Brooke County Parks BRK 10H PWB
5350.00	14087.46	BHI AutoTrak Curve (Short)	AT Curve <8-1/2">	Brooke County Parks BRK 10H PWB

RECEIVED  
Office of Oil and Gas

JUN 9 2017

WV Department of  
Environmental Protection