

# SOUTHWESTERN ENERGY

Location: Brooke County, WV  
 Field: Brooke  
 Facility: Sandra Parr BRK Pad Wellbore: Sandra Parr BRK 1H PWB

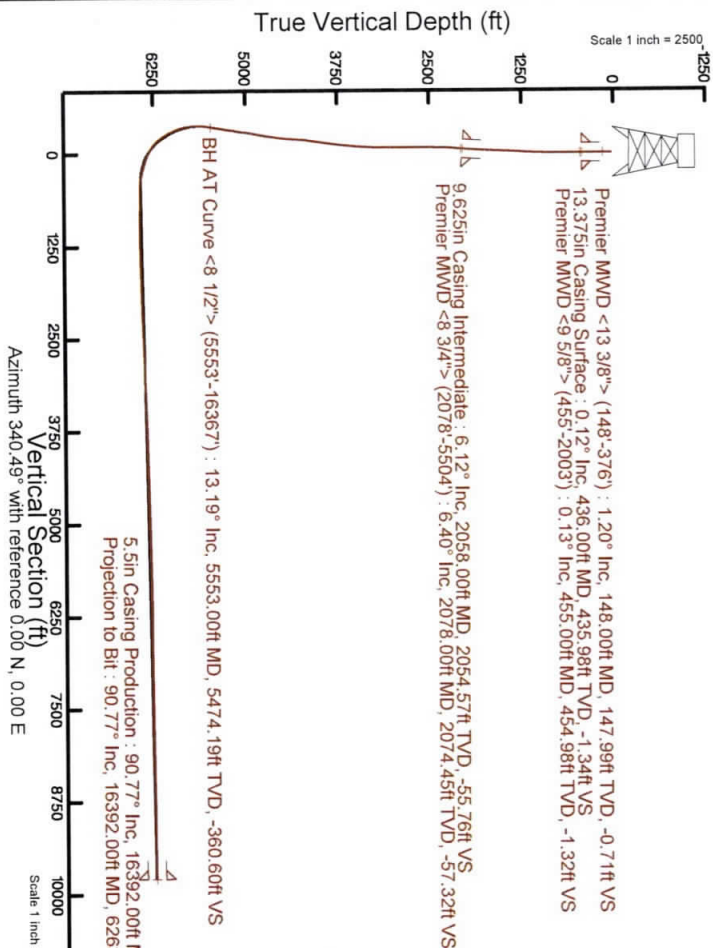
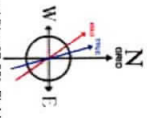
Slot: Slot 1H  
 Well: Sandra Parr BRK 1H  
 True vertical depth is Sandra Parr BRK 1H PWB Rev-C-0  
 Measured depths are referenced to SDC 42 (KB)  
 SDC 42 (KB) to Mean Sea Level: 1302.1 feet  
 Mean Sea Level to Ground level (At Slot: Slot 1H): -1276.1 feet  
 Coordinates are in feet referenced to Slot  
 Database: WA\_MPL\_EASTERNUS\_Defn

Comments  
 API 47-009-00250-0000  
 BH Job # : 1096516039  
 Rig SDC 42  
 Duration: 01/09/2019 - 01/06/2019

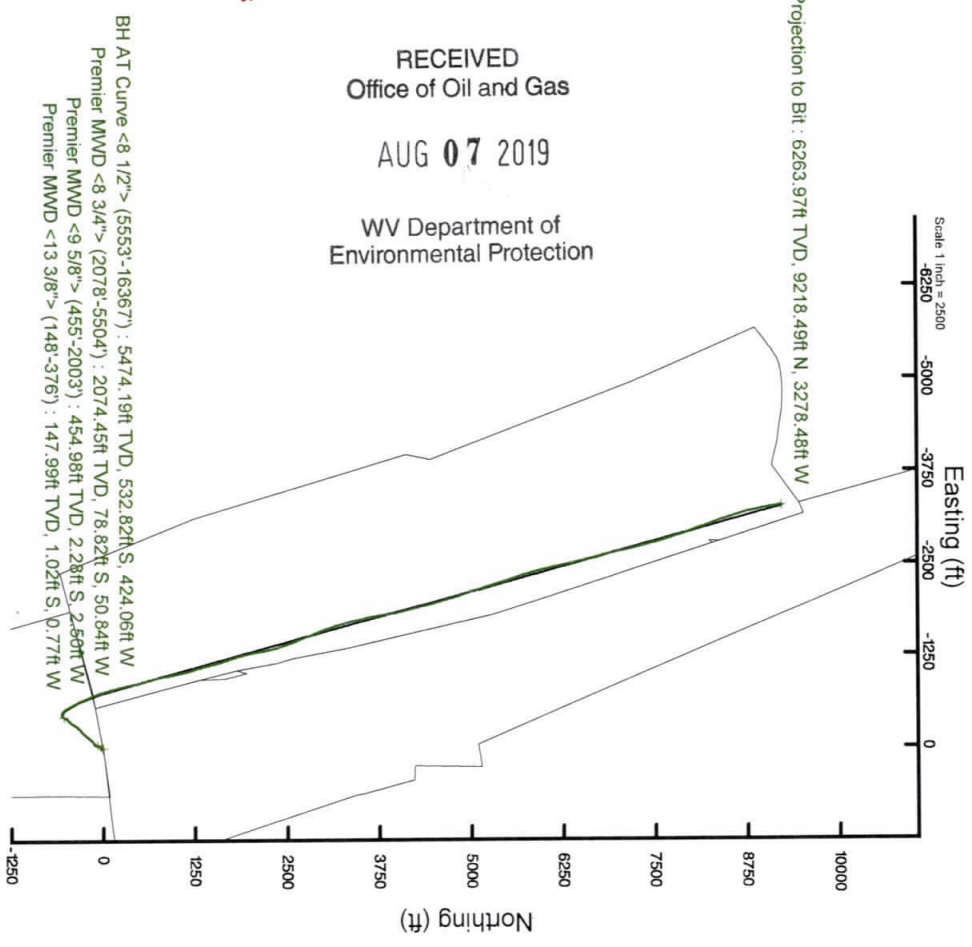


Location Information			
Facility Name	Grid East (US ft)	Grid North (US ft)	Latitude
Sandra Parr BRK Pad	1774090.396	14592474.069	40°10'46.360"N
Slot	Local N (ft)	Grid East (US ft)	Longitude
Slot 1H	-2.48	1774062.551	80°31'17.133"W
SDC 42 (KB) to Ground level (At Slot: Slot 1H)	-27.86	14592471.590	Latitude
Mean Sea Level to Ground level (At Slot: Slot 1H)			40°10'46.337"N
SDC 42 (KB) to Mean Sea Level			80°31'17.492"W
			26ft
			-1276.1ft
			1302.1ft

User specified Dip: 67.55° Field: 52655 nT  
 Magnetic North is 8.45 degrees West of True North at 20/Dec/2018)  
 Grid North is 5.31 degrees West of True North at 20/Dec/2018)  
 To correct azimuth from Magnetic to Grid subtract 8.76 degrees



RECEIVED  
 Office of Oil and Gas  
 AUG 07 2019  
 WV Department of  
 Environmental Protection



Projection to Bit: 6263.97ft TVD, 9218.49ft N, 3278.48ft W  
 Scale 1 inch = 2500



# Actual Wellpath Report

Sandra Parr BRK 1H AWP Proj:16392'  
Page 1 of 10

RECEIVED  
Office of Oil and Gas

AUG 07 2019

WV Department of  
Environmental Protection



REFERENCE WELLPATH IDENTIFICATION			
Operator	SOUTHWESTERN ENERGY	Slot	Slot 1H
Area	Brooke County, WV	Well	Sandra Parr BRK 1H
Field	Brooke	Wellbore	Sandra Parr BRK 1H AWB
Facility	Sandra Parr BRK Pad		

REPORT SETUP INFORMATION			
Projection System	NAD83 / UTM Zone 17 North, US feet	Software System	WellArchitect® 5.1
North Reference	Grid	User	Atenjen
Scale	0.999620	Report Generated	14/Jan/2019 at 12:54
Convergence at slot	0.31° East	Database/Source file	WA_MPL_EASTERNU_S_Defn/Sandra_Parr_BRK_1H_AWP_Proj_16392_.xml

WELLPATH LOCATION	Local coordinates		Grid coordinates		Geographic coordinates		
	North[ft]	East[ft]	Easting[US ft]	Northing[US ft]	Latitude	Longitude	
Slot Location	-2.48	-27.86	1774062.55	14592471.59	40°10'46.337"N	80°31'17.492"W	
Facility Reference Pt			1774090.40	14592474.07	40°10'46.360"N	80°31'17.133"W	
Field Reference Pt			0.00	0.00	0°00'00.000"	85°29'19.478"W	

WELLPATH DATUM			
Calculation method	Minimum curvature	SDC 42 (KB) to Facility Vertical Datum	1302.10ft
Horizontal Reference Pt	Slot	SDC 42 (KB) to Mean Sea Level	1302.10ft
Vertical Reference Pt	SDC 42 (KB)	SDC 42 (KB) to Ground Level at Slot (Slot 1H)	26.00ft
MD Reference Pt	SDC 42 (KB)	Section Origin	N 0.00, E 0.00 ft
Field Vertical Reference	Mean Sea Level	Section Azimuth	340.42°



# Actual Wellpath Report

Sandra Parr BRK 1H AWP Proj:16392

Page 2 of 10

RECEIVED  
Office of Oil and Gas

AUG 07 2019

WV Department of  
Environmental Protection



## REFERENCE WELLPATH IDENTIFICATION

Operator	SOUTHWESTERN ENERGY	Slot	Slot 1H
Area	Brooke County, WV	Well	Sandra Parr BRK 1H
Field	Brooke	Wellbore	Sandra Parr BRK 1H AWP
Facility	Sandra Parr BRK Pad		

## WELLPATH DATA (186 stations) + = Interpolated/extrapolated station

MD	Inclination	Azimuth	TVD	Vert Sect	North	East	Grid East	Grid North	Latitude	Longitude	Closure Dist	Closure Dir	DLS	Build Rate	Turn Rate
[ft]	[°]	[°]	[ft]	[ft]	[ft]	[ft]	[US ft]	[US ft]			[ft]	[°]	[°/100ft]	[°/100ft]	[°/100ft]
0.00+	0.000	216.790	0.00	0.00	0.00	0.00	1774062.55	14592471.59	40°10'46.337"N	80°31'17.492"W	0.00	0.000	0.00	0.00	0.00
26.00	0.000	216.790	26.00	0.00	0.00	0.00	1774062.55	14592471.59	40°10'46.337"N	80°31'17.492"W	0.00	0.000	0.00	0.00	0.00
148.00	1.200	216.790	147.99	-0.71	-1.02	-0.77	1774060.75	14592470.57	40°10'46.327"N	80°31'17.502"W	1.28	216.790	0.98	0.98	-117.39
238.00	0.490	225.770	237.98	-1.39	-2.05	-1.61	1774060.95	14592469.54	40°10'46.317"N	80°31'17.513"W	2.60	218.113	0.80	0.79	9.98
329.00	0.400	256.560	328.98	-1.52	-2.39	-2.19	1774060.36	14592469.20	40°10'46.313"N	80°31'17.520"W	3.24	222.521	0.28	-0.10	33.84
376.00	0.130	334.460	375.98	-1.45	-2.38	-2.38	1774060.18	14592469.21	40°10'46.314"N	80°31'17.523"W	3.36	224.928	0.84	-0.57	165.74
455.00	0.130	280.660	454.98	-1.31	-2.28	-2.50	1774060.05	14592469.31	40°10'46.315"N	80°31'17.524"W	3.39	227.610	0.15	0.00	-68.10
515.00	0.160	151.720	514.98	-1.36	-2.35	-2.53	1774060.02	14592469.25	40°10'46.314"N	80°31'17.525"W	3.45	227.164	0.44	0.05	-214.90
606.00	0.370	192.440	605.98	-1.74	-2.74	-2.53	1774060.02	14592468.85	40°10'46.310"N	80°31'17.525"W	3.73	222.705	0.30	0.23	44.75
697.00	0.350	253.630	696.97	-1.97	-3.11	-2.86	1774059.69	14592468.48	40°10'46.306"N	80°31'17.529"W	4.23	222.633	0.40	-0.02	67.24
792.00	0.650	220.930	791.97	-2.22	-3.60	-3.49	1774059.06	14592467.99	40°10'46.302"N	80°31'17.537"W	5.02	224.158	0.42	0.32	-34.42
887.00	0.810	207.790	886.96	-2.94	-4.60	-4.16	1774058.39	14592466.99	40°10'46.292"N	80°31'17.546"W	6.20	222.129	0.24	0.17	-13.83
982.00	1.860	216.950	981.94	-4.24	-6.43	-5.40	1774057.15	14592465.17	40°10'46.274"N	80°31'17.562"W	8.39	220.043	1.12	1.11	9.64
1077.00	3.510	220.520	1076.83	-6.54	-9.87	-8.22	1774054.34	14592461.73	40°10'46.240"N	80°31'17.599"W	12.84	219.780	1.74	1.74	3.76
1171.00	4.970	216.010	1170.57	-10.28	-15.35	-12.48	1774050.08	14592456.25	40°10'46.186"N	80°31'17.654"W	19.78	219.112	1.59	1.55	-4.80
1267.00	5.710	213.390	1266.15	-15.51	-22.70	-17.55	1774045.00	14592448.90	40°10'46.114"N	80°31'17.720"W	28.70	217.712	0.81	0.77	-2.73
1363.00	5.370	213.040	1361.70	-21.11	-30.45	-22.63	1774039.93	14592441.15	40°10'46.037"N	80°31'17.786"W	37.94	216.616	0.36	-0.35	-0.36
1458.00	3.890	215.520	1456.39	-25.65	-36.80	-26.93	1774035.63	14592434.80	40°10'45.975"N	80°31'17.842"W	45.60	216.190	1.57	-1.56	2.61
1555.00	3.370	212.640	1553.20	-29.28	-41.88	-30.38	1774032.19	14592429.72	40°10'45.925"N	80°31'17.886"W	51.74	215.952	0.57	-0.54	-2.97
1651.00	3.900	211.450	1649.00	-33.07	-47.04	-33.60	1774028.96	14592424.56	40°10'45.874"N	80°31'17.928"W	57.81	215.536	0.56	0.55	-1.24
1747.00	5.080	212.040	1744.71	-37.76	-53.43	-37.56	1774025.01	14592418.18	40°10'45.811"N	80°31'17.980"W	65.31	215.105	1.23	1.23	0.61
1844.00	4.510	209.490	1841.37	-42.92	-60.39	-41.72	1774020.85	14592411.22	40°10'45.747"N	80°31'18.034"W	73.40	214.634	0.63	-0.59	-2.63
1940.00	4.470	206.380	1937.07	-48.00	-67.03	-45.24	1774017.33	14592404.59	40°10'45.677"N	80°31'18.079"W	80.87	214.014	0.26	-0.04	-3.24
2003.00	5.340	205.320	1999.84	-51.78	-71.88	-47.58	1774014.99	14592399.74	40°10'45.629"N	80°31'18.100"W	86.20	213.503	1.39	1.38	-1.68
2078.00	6.400	205.030	2074.45	-57.23	-78.82	-50.84	1774011.73	14592392.80	40°10'45.561"N	80°31'18.153"W	93.80	212.823	1.41	1.41	-0.39
2143.00	6.320	203.270	2139.05	-62.43	-85.39	-53.79	1774008.78	14592386.23	40°10'45.496"N	80°31'18.191"W	100.92	212.207	0.32	-0.12	-2.71
2239.00	3.220	182.950	2234.71	-68.80	-92.94	-56.01	1774006.56	14592378.69	40°10'45.422"N	80°31'18.220"W	108.51	211.077	3.63	-3.23	-21.17
2335.00	1.310	169.750	2330.63	-72.37	-96.71	-55.96	1774006.61	14592374.92	40°10'45.384"N	80°31'18.220"W	111.73	210.054	2.05	-1.99	-13.75
2432.00	1.150	124.550	2427.61	-74.25	-98.36	-54.96	1774007.61	14592373.27	40°10'45.368"N	80°31'18.207"W	112.67	209.196	0.99	-0.16	-46.60
2528.00	1.380	104.360	2523.59	-75.68	-99.19	-53.05	1774009.53	14592372.44	40°10'45.360"N	80°31'18.182"W	112.48	208.138	0.52	0.24	-21.03



# Actual Wellpath Report

Sandra Parr BRK 1H AWP Proj:16392'

Page 3 of 10

RECEIVED  
Office of Oil and Gas

AUG 07 2019

WV Department of  
Environmental Protection



## REFERENCE WELLPATH IDENTIFICATION

Operator	SOUTHWESTERN ENERGY	Slot	Slot 1H
Area	Brooke County, WV	Well	Sandra Parr BRK 1H
Field	Brooke	Wellbore	Sandra Parr BRK 1H AWP
Facility	Sandra Parr BRK Pad		

## WELLPATH DATA (186 stations)

MD	Inclination	Azimuth	TVD	Vert Sect	North	East	Grid East	Grid North	Latitude	Longitude	Closure Dist	Closure Dir	DLS	Build Rate	Turn Rate
[ft]	[°]	[°]	[ft]	[ft]	[ft]	[ft]	[US ft]	[US ft]			[ft]	[°]	[°/100ft]	[°/100ft]	[°/100ft]
2623.00	1.670	92.100	2618.55	-76.83	-99.52	-50.55	1774012.02	14592372.11	40°10'45.356"N	80°31'18.150"W	111.63	206.929	0.46	0.31	-12.91
2720.00	1.600	76.850	2715.51	-77.50	-99.27	-47.82	1774014.75	14592372.36	40°10'45.359"N	80°31'18.115"W	110.19	205.723	0.45	-0.07	-15.72
2815.00	1.540	63.540	2810.48	-77.50	-98.40	-45.39	1774017.18	14592373.23	40°10'45.367"N	80°31'18.084"W	108.36	204.763	0.39	-0.06	-14.01
2911.00	1.610	54.940	2906.44	-76.98	-97.05	-43.13	1774019.44	14592374.58	40°10'45.380"N	80°31'18.054"W	106.20	203.962	0.26	0.07	-8.96
3007.00	0.360	249.060	3002.43	-76.63	-96.38	-42.31	1774020.26	14592375.25	40°10'45.387"N	80°31'18.044"W	105.26	203.700	2.04	-1.30	-172.79
3103.00	3.180	235.220	3098.38	-77.34	-98.01	-44.78	1774017.79	14592373.62	40°10'45.371"N	80°31'18.076"W	107.75	204.555	2.95	2.94	-14.42
3200.00	5.130	231.310	3195.12	-79.46	-102.25	-50.37	1774012.20	14592369.38	40°10'45.329"N	80°31'18.148"W	113.99	206.226	2.03	2.01	-4.03
3295.00	7.360	231.170	3289.55	-82.86	-108.72	-58.43	1774004.14	14592362.91	40°10'45.266"N	80°31'18.252"W	123.43	208.254	2.35	2.35	-0.15
3392.00	10.250	230.870	3385.39	-87.80	-118.07	-69.97	1773992.61	14592353.57	40°10'45.174"N	80°31'18.402"W	137.24	210.650	2.98	2.98	-0.31
3488.00	10.570	228.960	3479.81	-93.88	-129.24	-83.23	1773979.35	14592342.40	40°10'45.064"N	80°31'18.573"W	153.72	212.782	0.49	0.33	-1.99
3584.00	12.330	226.930	3573.90	-101.19	-142.02	-97.36	1773965.23	14592329.62	40°10'44.939"N	80°31'18.756"W	172.19	214.433	1.88	1.83	-2.11
3681.00	12.790	223.980	3668.58	-110.10	-156.82	-112.38	1773950.21	14592314.83	40°10'44.793"N	80°31'18.951"W	192.93	215.627	0.81	0.47	-3.04
3777.00	14.210	223.220	3761.93	-120.21	-173.05	-127.83	1773934.77	14592298.60	40°10'44.634"N	80°31'19.151"W	215.15	216.453	1.49	1.48	-0.79
3873.00	13.890	221.140	3855.05	-131.24	-190.32	-143.48	1773919.12	14592281.34	40°10'44.464"N	80°31'19.354"W	238.35	217.013	0.62	-0.33	-2.17
3969.00	14.850	217.990	3948.65	-143.47	-208.69	-158.64	1773903.97	14592262.98	40°10'44.283"N	80°31'19.550"W	262.14	217.240	1.29	1.00	-3.28
4062.69	14.680	216.590	4038.65	-156.52	-227.69	-173.10	1773889.51	14592243.99	40°10'44.096"N	80°31'19.738"W	286.02	217.245	0.42	-0.18	-1.49
4158.42	13.160	212.530	4131.57	-169.97	-246.61	-186.19	1773876.43	14592225.07	40°10'43.910"N	80°31'19.908"W	309.01	217.053	1.89	-1.59	-4.24
4253.95	12.490	216.420	4224.71	-182.42	-264.10	-198.18	1773864.45	14592207.59	40°10'43.738"N	80°31'20.064"W	330.18	216.884	1.14	-0.70	-4.07
4350.07	13.540	231.980	4318.39	-191.80	-279.40	-213.22	1773849.42	14592192.30	40°10'43.587"N	80°31'20.258"W	351.46	217.348	3.79	1.09	-16.19
4446.25	16.120	238.660	4411.37	-198.08	-293.28	-233.49	1773829.15	14592178.42	40°10'43.451"N	80°31'20.521"W	374.88	218.525	3.21	2.68	6.95
4543.72	17.060	228.050	4504.80	-206.29	-309.88	-255.69	1773806.96	14592161.83	40°10'43.288"N	80°31'20.808"W	401.75	219.527	3.25	0.96	-10.89
4638.79	16.290	220.240	4595.88	-218.30	-329.38	-274.68	1773787.98	14592142.33	40°10'43.097"N	80°31'21.054"W	428.88	219.825	2.49	-0.81	-8.21
4735.27	14.350	216.220	4688.93	-231.83	-349.36	-290.49	1773772.18	14592122.36	40°10'42.900"N	80°31'21.259"W	454.35	219.743	2.29	-2.01	-4.17
4831.55	14.740	212.390	4782.13	-246.08	-369.33	-304.74	1773758.57	14592102.40	40°10'42.704"N	80°31'21.435"W	478.41	219.467	1.08	0.41	-3.98
4927.84	16.150	211.810	4874.94	-261.98	-391.05	-317.72	1773744.95	14592088.20	40°10'42.490"N	80°31'21.612"W	503.85	219.093	1.47	1.46	-0.60
5023.97	16.670	216.180	4967.16	-278.09	-413.54	-332.91	1773729.77	14592068.20	40°10'42.268"N	80°31'21.810"W	530.89	218.834	1.39	0.54	4.55
5120.70	17.440	218.280	5059.63	-293.61	-436.12	-350.08	1773712.61	14592035.63	40°10'42.046"N	80°31'22.032"W	559.25	218.754	1.02	0.80	2.17
5216.48	18.290	222.150	5150.80	-308.36	-458.53	-369.06	1773693.64	14592013.23	40°10'41.825"N	80°31'22.278"W	588.60	218.829	1.52	0.89	4.04
5311.55	17.180	219.870	5241.35	-322.56	-480.37	-388.07	1773674.63	14591991.40	40°10'41.611"N	80°31'22.525"W	617.54	218.933	1.38	-1.17	-2.40
5406.89	15.800	215.390	5332.77	-337.17	-501.76	-404.61	1773658.09	14591970.02	40°10'41.400"N	80°31'22.739"W	644.57	218.882	1.97	-1.45	-4.70



# Actual Wellpath Report

Sandra Parr BRK 1H AWP Proj:16392

Page 4 of 10

RECEIVED  
Office of Oil and Gas

AUG 07 2019

WV Department of  
Environmental Protection



## REFERENCE WELLPATH IDENTIFICATION

Operator	SOUTHWESTERN ENERGY		Slot	Slot 1H
Area	Brooke County, WV		Well	Sandra Parr BRK 1H
Field	Brooke		Wellbore	Sandra Parr BRK 1H AWP
Facility	Sandra Parr BRK Pad			

## WELLPATH DATA (186 stations)

MD	Inclination	Azimuth	TVD	Vert Sect	North	East	Grid East	Grid North	Latitude	Longitude	Closure Dist	Closure Dir	DLS	Build Rate	Turn Rate
(ft)	(°)	(°)	(ft)	(ft)	(ft)	(ft)	(US ft)	(US ft)			(ft)	(°)	(°/100ft)	(°/100ft)	(°/100ft)
5504.74	14.150	210.680	5427.30	-352.47	-522.91	-418.43	1773644.28	14591948.88	40°10'41.192"N	80°31'22.919"W	669.71	218.667	2.09	-1.69	-4.81
5553.00	13.190	208.450	5474.19	-359.92	-532.82	-424.06	1773638.65	14591938.97	40°10'41.094"N	80°31'22.992"W	680.98	218.516	2.27	-1.99	-4.62
5597.00	12.440	209.140	5517.09	-366.41	-541.38	-428.76	1773633.95	14591930.42	40°10'41.010"N	80°31'23.053"W	690.60	218.379	1.74	-1.70	-1.57
5644.00	11.500	221.950	5563.08	-371.98	-549.28	-434.36	1773628.35	14591922.56	40°10'40.872"N	80°31'23.126"W	700.27	218.336	5.98	-2.00	-27.26
5692.00	11.470	237.350	5610.13	-375.34	-555.42	-441.58	1773621.14	14591916.38	40°10'40.832"N	80°31'23.219"W	709.57	218.486	6.37	-0.06	-32.08
5739.00	12.090	255.270	5656.15	-375.98	-559.19	-450.28	1773612.44	14591912.61	40°10'40.835"N	80°31'23.332"W	717.95	218.842	7.86	1.32	-38.13
5786.00	12.480	270.120	5702.09	-373.86	-560.43	-460.12	1773602.61	14591911.37	40°10'40.823"N	80°31'23.459"W	725.12	219.386	6.76	0.83	-31.60
5833.00	12.330	285.850	5748.01	-369.23	-559.05	-470.03	1773592.70	14591912.75	40°10'40.837"N	80°31'23.586"W	730.39	220.056	7.18	-0.32	-33.47
5884.00	13.790	296.200	5797.69	-361.72	-554.88	-480.72	1773582.01	14591916.92	40°10'40.879"N	80°31'23.724"W	734.16	220.904	5.40	2.86	-20.29
5931.00	15.830	302.670	5843.13	-352.64	-548.95	-491.15	1773571.59	14591922.85	40°10'40.938"N	80°31'23.858"W	736.59	221.819	5.58	4.34	-13.77
5981.00	18.490	309.990	5890.91	-340.40	-540.17	-502.96	1773559.78	14591931.63	40°10'41.026"N	80°31'24.009"W	738.07	222.957	6.84	5.32	-14.64
6028.00	21.600	315.670	5935.06	-326.12	-529.19	-514.72	1773548.02	14591942.61	40°10'41.135"N	80°31'24.160"W	738.23	224.206	7.80	6.62	-12.09
6076.00	25.660	322.650	5979.03	-308.19	-514.60	-527.21	1773535.54	14591957.19	40°10'41.280"N	80°31'24.320"W	736.72	225.694	10.26	8.46	-14.54
6123.00	28.600	327.700	6020.86	-287.52	-496.99	-539.40	1773523.36	14591974.79	40°10'41.454"N	80°31'24.476"W	733.45	227.343	7.94	6.26	-10.74
6172.00	30.150	329.730	6063.58	-263.98	-476.45	-551.87	1773510.89	14591995.32	40°10'41.658"N	80°31'24.635"W	729.08	229.195	3.76	3.16	-4.14
6219.00	32.200	332.410	6103.78	-239.98	-455.15	-563.62	1773499.14	14592016.61	40°10'41.869"N	80°31'24.785"W	724.45	231.077	5.27	4.36	-5.70
6268.00	36.720	334.100	6144.17	-212.48	-430.39	-576.07	1773486.70	14592041.36	40°10'42.115"N	80°31'24.944"W	719.09	233.236	9.43	9.22	-3.45
6315.00	41.210	333.830	6180.70	-183.12	-403.84	-589.05	1773473.73	14592067.90	40°10'42.378"N	80°31'25.109"W	714.19	235.566	9.56	9.55	-0.57
6364.00	46.180	333.660	6216.12	-149.51	-373.49	-604.02	1773458.76	14592098.24	40°10'42.678"N	80°31'25.300"W	710.17	238.269	10.15	10.14	-0.35
6411.00	50.490	334.400	6247.36	-114.62	-341.93	-619.38	1773443.40	14592129.79	40°10'42.991"N	80°31'25.495"W	707.50	241.099	9.25	9.17	-1.57
6460.00	55.280	334.780	6276.92	-75.76	-306.65	-636.14	1773426.65	14592165.06	40°10'43.341"N	80°31'25.709"W	706.19	244.264	9.80	9.78	-0.78
6556.00	65.690	336.730	6324.15	7.39	-230.56	-670.33	1773392.48	14592241.12	40°10'44.094"N	80°31'26.144"W	708.87	251.020	10.99	10.84	-2.03
6652.00	72.480	338.260	6358.40	96.89	-147.75	-704.61	1773358.21	14592323.90	40°10'44.914"N	80°31'26.580"W	719.93	258.157	7.23	7.07	-1.59
6749.00	72.450	340.170	6387.63	189.36	-61.28	-737.43	1773325.40	14592410.33	40°10'45.771"N	80°31'26.997"W	739.97	265.249	1.88	-0.03	-1.97
6845.00	76.890	343.810	6413.01	281.87	26.74	-766.01	1773296.83	14592498.33	40°10'46.642"N	80°31'27.672"W	766.48	271.999	5.90	4.63	-3.79
6941.00	86.730	345.860	6426.67	376.48	118.34	-790.82	1773272.04	14592589.88	40°10'47.548"N	80°31'27.959"W	840.64	284.515	3.48	3.38	-0.85
7037.00	89.970	346.680	6429.43	471.93	211.54	-813.59	1773249.27	14592683.05	40°10'48.471"N	80°31'28.230"W	889.10	290.069	0.76	0.00	-0.76
7133.00	89.970	347.410	6429.48	567.29	305.10	-835.11	1773227.76	14592776.57	40°10'49.396"N	80°31'28.500"W	944.69	294.963	0.98	-0.83	-0.51
7229.00	89.170	346.920	6430.20	662.62	398.69	-856.43	1773206.44	14592870.13	40°10'50.322"N	80°31'28.786"W	1008.02	299.277	1.12	-0.23	-1.09
7326.00	88.950	345.860	6431.80	759.08	492.96	-879.26	1773183.63	14592964.36	40°10'51.255"N	80°31'28.786"W					



Southwestern Energy

# Actual Wellpath Report

Sandra Parr BRK 1H AWP Proj:16392

Page 5 of 10

RECEIVED  
Office of Oil and Gas

AUG 07 2019

WV Department of  
Environmental Protection



## REFERENCE WELLPATH IDENTIFICATION

Operator	SOUTHWESTERN ENERGY	Slot	Slot 1H
Area	Brooke County, WV	Well	Sandra Parr BRK 1H
Field	Brooke	Wellbore	Sandra Parr BRK 1H AWP
Facility	Sandra Parr BRK Pad		

## WELLPATH DATA (186 stations)

MD	Inclination	Azimuth	TVD	Vert Sect	North	East	Grid East	Grid North	Latitude	Longitude	Closure Dist	Closure Dir	DLS	Build Rate	Turn Rate
(ft)	(°)	(°)	(ft)	(ft)	(ft)	(ft)	(US ft)	(US ft)			(ft)	(°)	(°/100ft)	(°/100ft)	(°/100ft)
7422.00	89.110	344.920	6433.42	854.71	585.84	-903.47	1773159.43	14593057.20	40°10'52.174"N	80°31'29.091"W	1076.78	302.961	0.99	0.17	-0.98
7518.00	88.920	343.500	6435.07	950.48	678.20	-929.59	1773133.32	14593149.53	40°10'53.088"N	80°31'29.421"W	1150.69	306.113	1.49	-0.20	-1.48
7615.00	91.390	349.460	6434.81	1046.89	772.46	-952.25	1773110.66	14593243.76	40°10'54.021"N	80°31'29.707"W	1226.16	309.049	6.65	2.55	6.14
7710.00	90.680	349.050	6433.09	1140.74	865.78	-969.96	1773079.96	14593337.04	40°10'55.944"N	80°31'29.929"W	1300.15	311.752	0.86	-0.75	-0.43
7807.00	90.460	347.550	6432.13	1236.82	960.76	-989.63	1773073.30	14593431.98	40°10'55.884"N	80°31'30.175"W	1379.28	314.152	1.56	-0.23	-1.55
7903.00	90.990	349.000	6430.91	1331.91	1054.74	-1009.13	1773053.80	14593525.93	40°10'56.813"N	80°31'30.420"W	1459.74	316.266	1.61	0.55	1.51
7999.00	91.200	347.070	6429.08	1427.04	1148.64	-1029.03	1773033.91	14593619.79	40°10'57.742"N	80°31'30.670"W	1542.16	318.144	2.02	0.22	-2.01
8094.00	91.050	341.170	6427.21	1521.78	1239.95	-1055.01	1773007.94	14593711.07	40°10'58.646"N	80°31'30.999"W	1628.04	319.607	6.21	-0.16	-6.21
8190.00	91.600	342.360	6424.99	1617.73	1331.10	-1085.04	1772977.92	14593802.19	40°10'59.548"N	80°31'31.379"W	1717.31	320.815	1.37	0.57	1.24
8287.00	91.540	347.160	6422.33	1714.39	1424.63	-1110.52	1772952.45	14593895.68	40°11'00.474"N	80°31'31.701"W	1806.33	322.063	4.95	-0.06	4.95
8382.00	91.200	347.230	6420.06	1808.70	1517.24	-1131.57	1772931.41	14593988.25	40°11'01.390"N	80°31'31.966"W	1892.74	323.284	0.37	-0.36	0.07
8479.00	91.480	343.470	6417.79	1905.30	1611.05	-1156.09	1772906.90	14594082.02	40°11'02.318"N	80°31'32.275"W	1982.93	324.337	3.89	0.29	-3.88
8574.00	91.290	339.250	6415.49	2000.23	1701.02	-1186.44	1772876.56	14594171.96	40°11'03.209"N	80°31'32.660"W	2073.91	325.105	4.45	-0.20	-4.44
8670.00	91.450	342.380	6413.20	2096.19	1791.65	-1217.98	1772845.04	14594262.55	40°11'04.106"N	80°31'33.060"W	2166.44	325.792	3.26	0.17	3.26
8766.00	92.370	346.980	6410.00	2191.85	1884.16	-1243.32	1772819.71	14594355.03	40°11'05.022"N	80°31'33.380"W	2257.41	326.580	4.88	0.96	4.79
8862.00	92.220	345.550	6406.15	2287.27	1977.34	-1266.09	1772796.94	14594448.17	40°11'05.944"N	80°31'33.667"W	2347.95	327.368	1.50	-0.16	-1.49
8959.00	91.760	348.420	6402.78	2383.56	2071.78	-1287.92	1772775.12	14594542.58	40°11'06.878"N	80°31'33.942"W	2439.47	328.133	2.99	-0.47	2.96
9055.00	92.620	351.660	6399.11	2478.13	2166.25	-1304.51	1772758.53	14594637.01	40°11'07.813"N	80°31'34.150"W	2528.71	328.944	3.49	0.90	3.38
9151.00	91.880	348.460	6395.34	2572.69	2260.72	-1321.07	1772741.98	14594731.45	40°11'08.747"N	80°31'34.356"W	2618.41	329.700	3.42	-0.77	-3.33
9247.00	92.100	343.910	6392.01	2668.12	2353.86	-1343.97	1772719.09	14594824.55	40°11'09.669"N	80°31'34.645"W	2710.52	330.275	4.74	0.23	-4.74
9343.00	92.130	341.660	6388.47	2763.97	2445.49	-1372.36	1772690.71	14594916.15	40°11'10.576"N	80°31'35.005"W	2804.25	330.700	2.34	0.03	-2.34
9439.00	92.000	339.700	6385.01	2859.90	2536.02	-1404.10	1772658.98	14595006.65	40°11'11.472"N	80°31'35.407"W	2898.78	331.028	2.04	-0.14	-2.04
9535.00	91.880	338.040	6381.76	2955.81	2625.51	-1438.69	1772624.41	14595096.10	40°11'12.358"N	80°31'35.847"W	2993.85	331.279	1.73	-0.13	-1.73
9631.00	91.820	338.220	6378.66	3051.68	2714.56	-1470.44	1772588.68	14595185.11	40°11'13.240"N	80°31'36.301"W	3089.14	331.491	0.20	-0.06	0.19
9727.00	91.850	337.700	6375.58	3147.54	2803.50	-1510.44	1772552.69	14595274.02	40°11'14.121"N	80°31'36.759"W	3184.50	331.686	0.54	0.03	-0.54
9823.00	91.910	337.880	6372.43	3243.39	2892.33	-1546.71	1772516.44	14595362.81	40°11'15.000"N	80°31'37.220"W	3279.92	331.864	0.20	0.06	0.19
9919.00	91.940	339.550	6369.21	3339.29	2981.72	-1581.53	1772481.62	14595452.18	40°11'15.886"N	80°31'37.663"W	3375.19	332.058	1.74	0.03	1.74
10016.00	91.850	340.820	6366.00	3436.24	3072.93	-1614.40	1772448.77	14595543.35	40°11'16.789"N	80°31'38.080"W	3471.19	332.284	1.31	-0.09	1.31
10112.00	91.970	343.050	6362.80	3532.14	3164.14	-1644.15	1772419.03	14595634.52	40°11'17.692"N	80°31'38.457"W	3565.81	332.543	2.32	0.12	2.32
10208.00	92.000	344.260	6359.48	3627.93	3256.20	-1671.15	1772392.04	14595726.55	40°11'18.603"N	80°31'38.799"W	3660.00	332.832	1.26	0.03	1.26



# Actual Wellpath Report

Sandra Parr BRK 1H AWP Proj:16392'

Page 6 of 10

RECEIVED  
Office of Oil and Gas

AUG 07 2019

WV Department of  
Environmental Protection



## REFERENCE WELLPATH IDENTIFICATION

Operator	SOUTHWESTERN ENERGY	Slot	Slot 1H
Area	Brooke County, WV	Well	Sandra Parr BRK 1H
Field	Brooke	Wellbore	Sandra Parr BRK 1H AWP
Facility	Sandra Parr BRK Pad		

## WELLPATH DATA (186 stations)

MD	Inclination	Azimuth	TVD	Vert Sect	North	East	Grid East	Grid North	Latitude	Longitude	Closure Dist	Closure Dir	DLS	Build Rate	Turn Rate
[ft]	[°]	[°]	[ft]	[ft]	[ft]	[ft]	[US ft]	[US ft]			[ft]	[°]	[°/100ft]	[°/100ft]	[°/100ft]
10303.00	92.000	345.200	6356.16	3722.60	3347.79	-1696.15	1772367.05	14595818.11	40°11'19.509"N	80°31'39.115"W	3752.95	333.131	0.99	0.00	0.99
10399.00	91.480	346.940	6353.24	3818.09	3440.92	-1719.25	1772343.96	14595911.20	40°11'20.431"N	80°31'39.406"W	3846.53	333.451	1.89	-0.54	1.81
10496.00	91.260	346.880	6350.93	3914.44	3535.38	-1741.21	1772322.00	14596005.62	40°11'21.365"N	80°31'39.682"W	3940.90	333.779	0.24	-0.23	-0.06
10592.00	91.320	348.140	6348.76	4009.68	3629.08	-1761.97	1772301.25	14596099.28	40°11'22.292"N	80°31'39.943"W	4034.20	334.103	1.31	0.06	1.31
10688.00	91.290	349.700	6346.58	4104.60	3723.26	-1780.41	1772282.82	14596193.43	40°11'23.224"N	80°31'40.174"W	4127.05	334.444	1.62	-0.03	1.63
10785.00	91.450	350.140	6344.26	4200.24	3818.74	-1797.38	1772265.85	14596288.87	40°11'24.168"N	80°31'40.387"W	4220.59	334.795	0.48	0.16	0.45
10880.00	91.360	350.690	6341.93	4293.77	3912.38	-1813.20	1772250.04	14596382.48	40°11'25.095"N	80°31'40.584"W	4312.12	335.135	0.59	-0.09	0.58
10977.00	91.480	348.170	6339.53	4389.54	4007.70	-1830.98	1772232.27	14596477.76	40°11'26.037"N	80°31'40.807"W	4406.15	335.446	2.60	0.12	-2.60
11073.00	91.390	345.200	6337.12	4484.93	4101.08	-1853.08	1772210.17	14596571.10	40°11'26.961"N	80°31'41.085"W	4500.31	335.684	3.09	-0.09	-3.09
11169.00	91.390	345.080	6334.79	4580.57	4193.84	-1877.70	1772185.57	14596663.83	40°11'27.879"N	80°31'41.396"W	4595.00	335.881	0.12	0.00	-0.13
11265.00	91.260	346.280	6332.57	4676.14	4286.83	-1901.43	1772161.84	14596756.79	40°11'28.799"N	80°31'41.695"W	4689.60	336.080	1.26	-0.14	1.25
11362.00	91.390	345.370	6330.33	4772.68	4380.85	-1925.18	1772138.10	14596850.77	40°11'29.730"N	80°31'41.995"W	4785.20	336.277	0.95	0.13	-0.94
11458.00	91.260	344.100	6328.11	4868.38	4473.44	-1950.45	1772112.85	14596943.32	40°11'30.646"N	80°31'42.314"W	4880.15	336.442	1.33	-0.14	-1.32
11554.00	91.450	343.510	6325.84	4964.19	4565.60	-1977.22	1772086.09	14597035.45	40°11'31.558"N	80°31'42.653"W	4975.35	336.584	0.65	0.20	-0.61
11650.00	91.140	343.580	6323.67	5060.02	4657.65	-2004.40	1772058.91	14597127.46	40°11'32.469"N	80°31'42.997"W	5070.63	336.716	0.33	-0.32	0.07
11747.00	90.990	343.330	6321.87	5156.87	4750.61	-2032.02	1772031.31	14597220.39	40°11'33.385"N	80°31'43.346"W	5166.96	336.842	0.30	-0.15	-0.26
11843.00	90.950	342.420	6320.24	5252.77	4842.34	-2060.28	1772003.05	14597312.09	40°11'34.297"N	80°31'43.704"W	5262.42	336.952	0.95	-0.04	-0.95
11939.00	91.200	341.050	6318.44	5348.72	4933.49	-2090.37	1771972.98	14597403.20	40°11'35.200"N	80°31'44.086"W	5358.07	337.037	1.45	0.26	-1.43
12035.00	91.050	341.830	6316.55	5444.69	5024.48	-2120.92	1771942.44	14597494.15	40°11'36.100"N	80°31'44.473"W	5453.78	337.115	0.83	-0.16	0.81
12132.00	91.200	342.610	6314.65	5541.62	5116.83	-2150.53	1771912.84	14597586.46	40°11'37.014"N	80°31'44.848"W	5550.38	337.204	0.82	0.15	0.80
12228.00	91.170	342.570	6312.67	5637.53	5208.41	-2179.25	1771884.13	14597678.01	40°11'37.921"N	80°31'45.212"W	5645.94	337.295	0.05	-0.03	-0.04
12324.00	90.920	342.970	6310.91	5733.44	5300.08	-2207.68	1771855.71	14597769.65	40°11'38.828"N	80°31'45.572"W	5741.49	337.386	0.49	-0.26	0.42
12421.00	90.770	342.320	6309.48	5830.35	5392.66	-2236.61	1771826.79	14597862.19	40°11'39.745"N	80°31'45.939"W	5838.08	337.474	0.69	-0.15	-0.67
12517.00	90.800	342.390	6308.17	5926.29	5484.13	-2265.71	1771797.71	14597953.63	40°11'40.650"N	80°31'46.307"W	5933.73	337.553	0.08	0.03	0.07
12612.00	90.990	342.020	6306.68	6021.23	5574.58	-2295.74	1771768.69	14598044.04	40°11'41.545"N	80°31'46.675"W	6028.41	337.626	0.44	0.20	-0.39
12708.00	90.060	341.200	6305.80	6117.20	5665.67	-2325.02	1771738.42	14598135.10	40°11'42.447"N	80°31'47.059"W	6124.18	337.688	1.29	-0.97	-0.85
12804.00	90.280	343.050	6305.52	6213.16	5757.03	-2354.49	1771708.96	14598226.42	40°11'43.351"N	80°31'47.433"W	6219.89	337.757	1.94	0.23	1.93
12900.00	90.090	345.150	6305.21	6308.95	5849.35	-2380.78	1771682.67	14598318.71	40°11'44.265"N	80°31'47.765"W	6315.30	337.853	2.20	-0.20	2.19
12997.00	90.370	347.470	6304.82	6405.43	5943.59	-2403.74	1771659.73	14598412.91	40°11'45.198"N	80°31'48.055"W	6411.26	337.980	2.41	0.29	2.39
13094.00	90.430	346.370	6304.14	6501.81	6038.07	-2425.69	1771637.79	14598507.35	40°11'46.132"N	80°31'48.331"W	6507.09	338.113	1.14	0.06	-1.13



# Actual Wellpath Report

Sandra Parr BRK 1H AWP Proj:16392'

Page 7 of 10

RECEIVED  
Office of Oil and Gas

AUG 07 2019

WV Department of  
Environmental Protection



## REFERENCE WELLPATH IDENTIFICATION

Operator	SOUTHWESTERN ENERGY		Slot	Slot 1H
Area	Brooke County, WV		Well	Sandra Parr BRK 1H
Field	Brooke		Wellbore	Sandra Parr BRK 1H AWP
Facility	Sandra Parr BRK Pad			

## WELLPATH DATA (186 stations)

MD	Inclination	Azimuth	TVD	Vert Sect	North	East	Grid East	Grid North	Latitude	Longitude	Closure Dist	Closure Dir	DLS	Build Rate	Turn Rate
(ft)	(°)	(°)	(ft)	(ft)	(ft)	(ft)	(US ft)	(US ft)			(ft)	(°)	(°/100ft)	(°/100ft)	(°/100ft)
13190.00	90.490	345.560	6303.37	6597.35	6131.20	-2448.97	1771614.51	1459860.45	40°11'47.054"N	80°31'48.625"W	6602.20	338.227	0.85	0.06	-0.84
13286.00	90.310	348.710	6302.70	6692.68	6224.77	-2470.34	1771579.15	14598693.99	40°11'47.980"N	80°31'48.894"W	6697.05	338.354	3.29	-0.19	3.28
13382.00	90.520	348.440	6302.01	6787.71	6318.87	-2489.36	1771574.14	14598788.05	40°11'48.911"N	80°31'49.132"W	6791.54	338.498	0.36	0.22	-0.28
13479.00	90.590	347.840	6301.07	6883.83	6413.79	-2509.29	1771554.21	14598882.94	40°11'49.850"N	80°31'49.383"W	6887.18	338.633	0.62	0.07	-0.62
13574.00	90.800	346.380	6299.91	6978.17	6506.39	-2530.48	1771533.03	14598975.50	40°11'50.766"N	80°31'49.650"W	6981.15	338.748	1.55	0.22	-1.54
13670.00	90.710	344.710	6298.65	7073.77	6599.34	-2554.44	1771509.08	14599068.41	40°11'51.686"N	80°31'49.952"W	7076.47	338.840	1.74	-0.09	-1.74
13767.00	90.590	344.840	6297.55	7170.49	6692.93	-2579.92	1771483.62	14599161.97	40°11'52.612"N	80°31'50.274"W	7172.95	338.920	0.18	-0.12	0.13
13862.00	90.680	345.890	6296.50	7265.13	6784.84	-2603.92	1771459.63	14599253.84	40°11'53.521"N	80°31'50.577"W	7267.35	339.004	1.11	0.09	1.11
13959.00	90.990	346.830	6295.08	7361.60	6879.09	-2626.79	1771436.76	14599348.06	40°11'54.454"N	80°31'50.865"W	7363.56	339.101	1.02	0.32	0.97
14054.00	90.590	347.450	6293.77	7455.93	6971.70	-2647.93	1771415.63	14599440.63	40°11'55.370"N	80°31'51.131"W	7457.62	339.203	0.78	-0.42	0.65
14150.00	90.520	347.340	6292.84	7551.22	7065.38	-2668.88	1771394.69	14599534.28	40°11'56.297"N	80°31'51.395"W	7552.65	339.306	0.14	-0.07	-0.11
14246.00	90.680	346.810	6291.84	7646.57	7158.95	-2690.35	1771373.23	14599627.80	40°11'57.223"N	80°31'51.665"W	7647.78	339.404	0.58	0.17	-0.55
14342.00	90.800	346.520	6290.60	7741.99	7252.35	-2712.49	1771351.09	14599721.17	40°11'58.147"N	80°31'51.944"W	7743.01	339.493	0.33	0.12	-0.30
14439.00	90.710	346.280	6289.32	7838.45	7346.62	-2735.30	1771328.30	14599815.41	40°11'59.079"N	80°31'52.232"W	7839.30	339.579	0.26	-0.09	-0.25
14534.00	90.710	344.690	6288.14	7933.07	7438.58	-2759.11	1771304.50	14599907.33	40°11'59.989"N	80°31'52.532"W	7933.80	339.649	1.67	0.00	-1.67
14630.00	90.740	344.050	6286.93	8028.84	7531.02	-2784.97	1771278.65	14599999.74	40°12'00.904"N	80°31'52.859"W	8029.47	339.706	0.67	0.03	-0.67
14725.00	90.680	343.380	6285.75	8123.67	7622.20	-2811.61	1771252.02	14600090.88	40°12'01.807"N	80°31'53.196"W	8124.23	339.752	0.71	-0.06	-0.71
14820.00	90.590	342.980	6284.70	8218.56	7713.13	-2839.09	1771224.54	14600181.78	40°12'02.707"N	80°31'53.545"W	8219.05	339.792	0.43	-0.09	-0.42
14915.00	90.680	341.780	6283.65	8313.49	7803.67	-2867.85	1771195.80	14600272.28	40°12'03.603"N	80°31'53.909"W	8313.95	339.822	1.27	0.09	-1.26
15012.00	90.620	339.880	6282.54	8410.48	7895.28	-2899.70	1771163.96	14600363.86	40°12'04.510"N	80°31'54.313"W	8410.93	339.833	1.96	-0.06	-1.96
15106.00	90.860	338.870	6281.33	8504.46	7983.25	-2932.80	1771130.87	14600451.79	40°12'05.381"N	80°31'54.734"W	8504.91	339.828	1.10	0.26	-1.07
15201.00	90.920	341.070	6279.85	8599.44	8072.48	-2965.34	1771098.34	14600540.99	40°12'06.264"N	80°31'55.147"W	8599.90	339.830	2.32	0.06	2.32
15296.00	90.890	340.590	6278.35	8694.42	8162.20	-2996.53	1771067.17	14600630.22	40°12'07.153"N	80°31'55.543"W	8694.87	339.841	0.51	-0.03	-0.51
15391.00	90.830	340.560	6276.93	8789.41	8251.78	-3028.18	1771035.58	14600720.68	40°12'08.039"N	80°31'55.944"W	8789.85	339.849	0.08	-0.06	-0.04
15486.00	90.770	339.950	6275.60	8884.40	8341.19	-3060.23	1770972.42	14600809.59	40°12'08.925"N	80°31'56.352"W	8884.84	339.853	0.63	-0.06	-0.63
15580.00	90.800	341.430	6274.31	8978.39	8429.89	-3091.31	1770942.83	14600898.26	40°12'09.803"N	80°31'56.746"W	8978.82	339.862	1.57	0.03	1.57
15676.00	90.740	342.640	6273.02	9074.34	8521.20	-3120.91	1770942.83	14600989.54	40°12'10.707"N	80°31'57.122"W	9074.74	339.885	1.26	-0.06	1.26
15771.00	90.770	343.150	6271.77	9169.24	8611.99	-3148.85	1770914.90	14601080.29	40°12'11.605"N	80°31'57.475"W	9169.60	339.916	0.54	0.03	0.54
15866.00	90.710	343.900	6270.55	9264.09	8703.08	-3175.79	1770887.97	14601171.35	40°12'12.507"N	80°31'57.816"W	9264.41	339.953	0.79	-0.06	0.79
15961.00	90.740	346.460	6269.34	9358.75	8794.90	-3200.09	1770863.68	14601263.14	40°12'13.415"N	80°31'58.123"W	9359.00	340.006	2.69	0.03	2.69





# Actual Wellpath Report

Sandra Parr BRK 1H AWP Proj:16392'

Page 8 of 10

RECEIVED  
Office of Oil and Gas

AUG 07 2019

WV Department of  
Environmental Protection



## REFERENCE WELLPATH IDENTIFICATION

Operator	SOUTHWESTERN ENERGY	Slot	Slot 1H
Area	Brooke County, WV	Well	Sandra Parr BRK 1H
Field	Brooke	Wellbore	Sandra Parr BRK 1H AWB
Facility	Sandra Parr BRK Pad		

## WELLPATH DATA (186 stations)

MD	Inclination	Azimuth	TVD	Vert Sect	North	East	Grid East	Grid North	Latitude	Longitude	Closure Dist	Closure Dir	DLS	Build Rate	Turn Rate
[ft]	[°]	[°]	[ft]	[ft]	[ft]	[ft]	[US ft]	[US ft]			[ft]	[°]	[°/100ft]	[°/100ft]	[°/100ft]
16056.00	90.400	347.480	62668.40	19453.13	8887.45	-3221.50	1770842.28	14601355.65	40°12'14.331"N	80°31'58.393"W	9453.30	340.076	1.13	-0.36	1.07
16152.00	90.890	349.810	6267.32	9548.13	8981.56	-3240.40	1770823.38	14601449.72	40°12'15.262"N	80°31'58.630"W	9548.23	340.161	2.48	0.51	2.43
16249.00	90.800	351.270	6265.89	9643.60	9077.23	-3256.34	1770807.45	14601545.35	40°12'16.208"N	80°31'58.829"W	9643.64	340.265	1.51	-0.09	1.51
16344.00	90.740	350.790	6264.61	9736.97	9171.06	-3271.15	1770792.64	14601639.15	40°12'17.136"N	80°31'59.014"W	9736.98	340.370	0.51	-0.06	-0.51
16367.00	90.770	351.350	6264.31	9759.57	9193.77	-3274.72	1770789.08	14601661.86	40°12'17.361"N	80°31'59.058"W	9759.58	340.395	2.44	0.13	2.43
16392.00	90.770	351.350	6263.97	9784.12	9218.49	-3278.48	1770785.32	14601686.56	40°12'17.605"N	80°31'59.105"W	9784.12	340.422	0.00	0.00	0.00

## HOLE & CASING SECTIONS - Ref Wellbore: Sandra Parr BRK 1H AWB Ref Wellpath: Sandra Parr BRK 1H AWP Proj:16392'

String/Diameter	Start MD	End MD	Interval	Start TVD	End TVD	Start N/S	Start E/W	End N/S	End E/W
	[ft]	[ft]	[ft]	[ft]	[ft]	[ft]	[ft]	[ft]	[ft]
17.5in Open Hole	26.00	436.00	410.00	26.00	435.98	0.00	0.00	-2.30	-2.46
13.375in Casing Surface	26.00	436.00	410.00	26.00	435.98	0.00	0.00	-2.30	-2.46
12.25in Open Hole	436.00	2058.00	1622.00	435.98	2054.57	-2.30	-2.46	-76.85	-49.92
9.625in Casing Intermediate	26.00	2058.00	2032.00	26.00	2054.57	0.00	0.00	-76.85	-49.92
8.75in Open Hole	2058.00	5583.00	3525.00	2054.57	5503.43	-76.85	-49.92	-538.71	-427.29
8.5in Open Hole	5583.00	16392.00	10809.00	5503.43	6263.97	-538.71	-427.29	9218.49	-3278.48
5.5in Casing Production	26.00	16392.00	16366.00	26.00	6263.97	0.00	0.00	9218.49	-3278.48



# Actual Wellpath Report

Sandra Parr BRK 1H AWP Proj:16392'

Page 9 of 10

RECEIVED  
Office of Oil and Gas  
AUG 07 2019  
WV Department of  
Environmental Protection



REFERENCE WELLPATH IDENTIFICATION			
Operator	SOUTHWESTERN ENERGY	Slot	Slot 1H
Area	Brooke County, WV	Well	Sandra Parr BRK 1H
Field	Brooke	Wellbore	Sandra Parr BRK 1H AWB
Facility	Sandra Parr BRK Pad		

TARGETS								
Name	TVD [ft]	North [ft]	East [ft]	Grid East [US ft]	Grid North [US ft]	Latitude	Longitude	Shape
Sandra Parr BRK 1H BHL Rev-2	6272.00	9223.79	-3267.38	1770796.42	14601691.86	40°12'17.657"N	80°31'58.962"W	point
Sandra Parr BRK 1H LP Rev-2	6421.00	91.62	-768.87	1773293.97	14592563.18	40°10'47.283"N	80°31'27.391"W	point

WELLPATH COMPOSITION - Ref Wellbore: Sandra Parr BRK 1H AWB Ref Wellpath: Sandra Parr BRK 1H AWP Proj:16392'						
Start MD [ft]	End MD [ft]	Positional Uncertainty Model	Log Name/Comment	Wellbore		
26.00	376.00	OWSG MWD rev2 + HRGM	01_Premier MWD <13 3/8"> (148-376)	Sandra Parr BRK 1H AWB		
376.00	2003.00	OWSG MWD rev2 + HRGM	02_Premier MWD <9 5/8"> (455-2003)	Sandra Parr BRK 1H AWB		
2003.00	5504.74	OWSG MWD rev2 + HRGM	03_Premier MWD <8 3/4"> (2078-5504)	Sandra Parr BRK 1H AWB		
5504.74	16367.00	BH AutoTrak Curve (Short)	04_BH AT Curve <8 1/2"> (5553-16367)	Sandra Parr BRK 1H AWB		
16367.00	16392.00	Blind Drilling (std)	Projection to bit	Sandra Parr BRK 1H AWB		



**Actual Wellpath Report**  
 Sandra Parr BRK 1H AWP Proj: 16392'  
 Page 10 of 10

RECEIVED  
 Office of Oil and Gas

AUG 07 2019

WV Department of  
 Environmental Protection



**REFERENCE WELLPATH IDENTIFICATION**

Operator	SOUTHWESTERN ENERGY	Slot	Slot 1H
Area	Brooke County, WV	Well	Sandra Parr BRK 1H
Field	Brooke	Wellbore	Sandra Parr BRK 1H AWP
Facility	Sandra Parr BRK Pad		

**COMMENTS**

Wellpath general comments

API: 47-009-00250-0000

BH Job #: 109516039

Rig: SDC 42

Duration: 01/03/2019 - 01/06/2019