

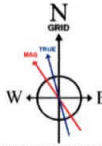
SWN PRODUCTION COMPANY, LLC

Location: Brooke County, WV
Field: Brooke
Facility: Edward Zatta BRK Pad

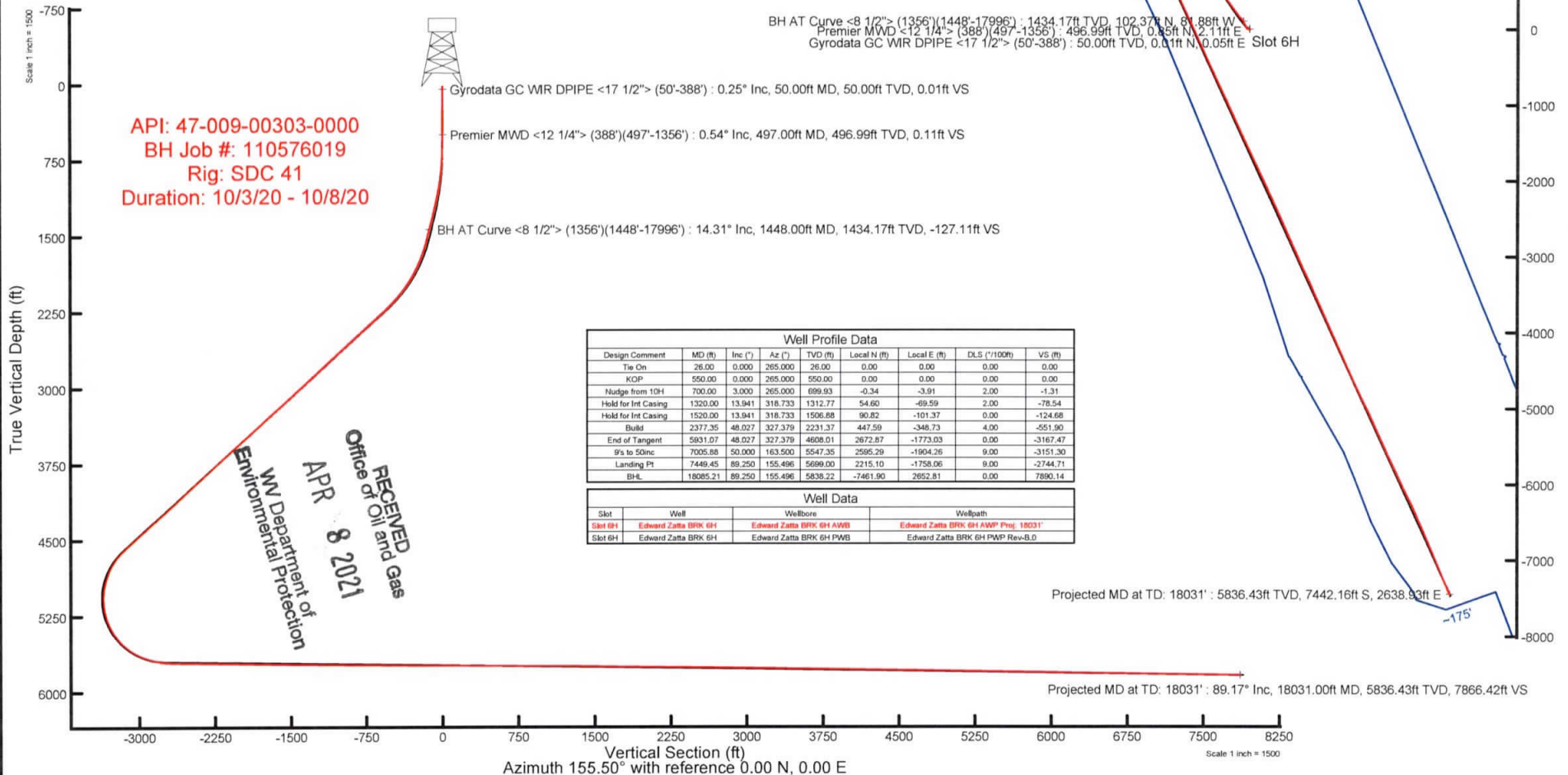
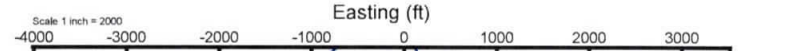
Slot: Slot 6H
Well: Edward Zatta BRK 6H
Wellbore: Edward Zatta BRK 6H PWB

Plot reference wellbore is Edward Zatta BRK 6H PWB Rev-B.0	Grid System: NAD83 / UTM Zone 17 North, US feet
True vertical depths are referenced to SDC 41 (KB)	North Reference: Grid north
Reference wellbore measured depths are referenced to SDC 41 (KB)	Scale: True distance
SDC 41 (KB) to Mean Sea Level: 1244 feet	Coordinates are in feet referenced to Slot
Mean Sea Level to Ground level (At Slot: Slot 6H) -1218 feet	Depths are in feet
Offset wellbore MDs are referenced to each path's default MD datum	Created by: Mphop on 2020-10-09; Database: WA_MPL_EASTERNUS_Data

Location Information					
Facility Name	Grid East (US ft)	Grid North (US ft)	Latitude	Longitude	
Edward Zatta BRK Pad	1742964.478	14616708.482	40°14'47.40007"N	80°37'57.00007"W	
Slot	Local N (ft)	Local E (ft)	Grid East (US ft)	Grid North (US ft)	Longitude
Slot 6H	-39.70	-5.46	1742969.020	14616668.800	80°37'57.0725"W
SDC 41 (KB) to Ground level (At Slot: Slot 6H)			26ft		
Mean Sea Level to Ground level (At Slot: Slot 6H)			-1218ft		
SDC 41 (KB) to Mean Sea Level			1244ft		



User specified (HDGM) Dip: 67.30° Field: 52294 nT
Magnetic North is 8.21 degrees West of True North (at 28/Sept/2020)
Grid North is 0.24 degrees East of True North
To correct azimuth from True to Grid subtract 0.24 degrees
To correct azimuth from Magnetic to Grid subtract 8.45 degrees





Actual Wellpath Report

Edward Zatta BRK 6H AWP Proj: 18031'
Page 1 of 10



REFERENCE WELLPATH IDENTIFICATION			
Operator	SWN PRODUCTION COMPANY, LLC	Well	Edward Zatta BRK 6H
Field	Brooke	API	47-009-00303-0000
Facility	Edward Zatta BRK Pad	Wellbore	Edward Zatta BRK 6H AWB
Slot	Slot 6H		

REPORT SETUP INFORMATION			
Projection System	NAD83 / UTM Zone 17 North, US feet	Software System	WellArchitect® 6.0
North Reference	Grid	User	Hilpthop
Scale	0.999612	Report Generated	09/Oct/2020 at 15:20
Convergence at slot	0.24° East	Database	WA_MPL_EASTERNUS_Defn

WELLPATH LOCATION						
	Local coordinates		Grid coordinates		Geographic coordinates	
	North[ft]	East[ft]	Easting[US ft]	Northing[US ft]	Latitude	Longitude
Slot Location	-39.70	-5.46	1742959.02	14616668.80	40°14'47.0079"N	80°37'57.0725"W
Facility Reference Pt			1742964.48	14616708.48	40°14'47.4000"N	80°37'57.0000"W
Field Reference Pt			0.00	0.00	0°00'0.0000"	85°29'19.4780"W

WELLPATH DATUM			
Calculation method	Minimum curvature	SDC 41 (KB) to Facility Vertical Datum	1244.00ft
Horizontal Reference Pt	Slot	SDC 41 (KB) to Mean Sea Level	1244.00ft
Vertical Reference Pt	SDC 41 (KB)	SDC 41 (KB) to Ground Level at Slot (Slot 6H)	26.00ft
MD Reference Pt	SDC 41 (KB)	Section Origin	N 0.00, E 0.00 ft
Field Vertical Reference	Mean Sea Level	Section Azimuth	155.50°

RECEIVED
 Office of Oil and Gas
 Environmental Protection
 Department of
 Natural Resources
 APR - 8 2021



RECEIVED
Office of Oil and Gas
APR 8 2021
WV Department of
Environmental Protection

Actual Wellpath Report

Edward Zatta BRK 6H AWP Proj: 18031'
Page 2 of 10



REFERENCE WELLPATH IDENTIFICATION			
Operator	SWN PRODUCTION COMPANY, LLC	Well	Edward Zatta BRK 6H
Field	Brooke	API	47-009-00303-0000
Facility	Edward Zatta BRK Pad	Wellbore	Edward Zatta BRK 6H AWB
Slot	Slot 6H		

WELLPATH DATA (208 stations) † = interpolated, ‡ = extrapolated station															
MD [ft]	Inclination [°]	Azimuth [°]	TVD [ft]	Vert Sect [ft]	North [ft]	East [ft]	Grid East [US ft]	Grid North [US ft]	Latitude	Longitude	Closure Dist [ft]	Closure Dir [°]	DLS [°/100ft]	Build Rate [°/100ft]	Turn Rate [°/100ft]
0.00†	0.000	78.280	0.00	0.00	0.00	0.00	1742959.02	14616668.80	40°14'47.0079"N	80°37'57.0725"W	0.00	0.000	0.00	0.00	0.00
26.00	0.000	78.280	26.00	0.00	0.00	0.00	1742959.02	14616668.80	40°14'47.0079"N	80°37'57.0725"W	0.00	0.000	0.00	0.00	0.00
50.00	0.250	78.280	50.00	0.01	0.01	0.05	1742959.07	14616668.81	40°14'47.0080"N	80°37'57.0719"W	0.05	78.280	1.04	1.04	0.00
100.00	0.340	67.230	100.00	0.04	0.09	0.29	1742959.31	14616668.89	40°14'47.0088"N	80°37'57.0687"W	0.31	72.989	0.21	0.18	-22.10
150.00	0.360	75.510	150.00	0.07	0.19	0.58	1742959.60	14616668.99	40°14'47.0098"N	80°37'57.0650"W	0.61	72.243	0.11	0.04	16.56
200.00	0.370	52.820	200.00	0.06	0.32	0.86	1742959.88	14616669.12	40°14'47.0111"N	80°37'57.0614"W	0.92	69.466	0.29	0.02	-45.38
250.00	0.370	33.750	250.00	-0.06	0.56	1.08	1742960.10	14616669.36	40°14'47.0134"N	80°37'57.0585"W	1.22	62.837	0.25	0.00	-38.14
300.00	0.350	19.260	300.00	-0.25	0.83	1.22	1742960.24	14616669.63	40°14'47.0161"N	80°37'57.0567"W	1.48	55.705	0.19	-0.04	-28.98
350.00	0.320	38.010	349.99	-0.43	1.09	1.36	1742960.38	14616669.89	40°14'47.0186"N	80°37'57.0550"W	1.74	51.319	0.23	-0.06	37.50
388.00	0.280	79.820	387.99	-0.45	1.19	1.52	1742960.54	14616669.99	40°14'47.0196"N	80°37'57.0529"W	1.93	51.910	0.57	-0.11	110.03
497.00	0.540	139.290	496.99	0.11	0.85	2.11	1742961.13	14616669.65	40°14'47.0162"N	80°37'57.0452"W	2.28	68.183	0.43	0.24	54.56
587.00	3.150	250.890	586.95	0.28	-0.29	0.05	1742959.07	14616668.51	40°14'47.0051"N	80°37'57.0719"W	0.29	169.556	3.76	2.90	124.00
678.00	5.660	257.330	677.67	-0.87	-2.09	-6.69	1742952.33	14616666.71	40°14'46.9876"N	80°37'57.1589"W	7.01	252.660	2.81	2.76	7.08
769.00	7.410	274.760	768.09	-4.66	-2.59	-16.92	1742942.11	14616666.22	40°14'46.9831"N	80°37'57.2908"W	17.11	261.309	2.89	1.92	19.15
859.00	7.770	298.530	857.32	-12.36	0.80	-28.05	1742930.98	14616669.60	40°14'47.0170"N	80°37'57.4342"W	28.06	271.638	3.49	0.40	26.41
950.00	7.330	327.010	947.56	-23.02	8.61	-36.62	1742922.42	14616677.41	40°14'47.0945"N	80°37'57.5443"W	37.62	283.235	4.10	-0.48	31.30
1041.00	9.580	334.730	1037.57	-36.34	20.33	-43.01	1742916.03	14616689.12	40°14'47.2106"N	80°37'57.6261"W	47.57	295.300	2.76	2.47	8.48
1131.00	11.760	336.110	1126.01	-53.00	35.49	-49.92	1742909.12	14616704.28	40°14'47.3607"N	80°37'57.7145"W	61.25	305.409	2.44	2.42	1.53
1222.00	12.810	335.380	1214.92	-72.36	53.14	-57.88	1742901.16	14616721.92	40°14'47.5354"N	80°37'57.8161"W	78.58	312.555	1.17	1.15	-0.80
1313.00	14.160	334.790	1303.41	-93.58	72.38	-66.83	1742892.22	14616741.16	40°14'47.7260"N	80°37'57.9305"W	98.51	317.286	1.49	1.48	-0.65
1356.00	14.530	334.280	1345.07	-104.23	82.00	-71.41	1742887.64	14616750.77	40°14'47.8212"N	80°37'57.9890"W	108.74	318.951	0.91	0.86	-1.19
1448.00	14.310	331.270	1434.17	-127.11	102.37	-81.88	1742877.17	14616771.13	40°14'48.0229"N	80°37'58.1230"W	131.09	321.345	0.85	-0.24	-3.27
1539.00	14.190	315.190	1522.41	-148.79	120.15	-95.15	1742863.90	14616788.90	40°14'48.1992"N	80°37'58.2932"W	153.27	321.623	4.34	-0.13	-17.67
1630.00	17.580	316.820	1609.92	-172.28	138.09	-112.42	1742846.64	14616806.84	40°14'48.3771"N	80°37'58.5150"W	178.07	320.850	3.76	3.73	1.79
1720.00	21.180	320.540	1694.81	-200.87	160.56	-132.06	1742827.01	14616829.30	40°14'48.6000"N	80°37'58.7671"W	207.90	320.563	4.23	4.00	4.13
1811.00	24.070	321.460	1778.80	-234.76	187.78	-154.08	1742805.00	14616856.50	40°14'48.8698"N	80°37'59.0495"W	242.90	320.630	3.20	3.18	1.01
1902.00	28.410	324.680	1860.41	-274.05	219.97	-178.17	1742780.92	14616888.69	40°14'49.1890"N	80°37'59.3585"W	283.08	320.994	5.02	4.77	3.54
1992.00	32.500	324.190	1937.97	-318.81	257.06	-204.70	1742754.40	14616925.76	40°14'49.5566"N	80°37'59.6987"W	328.61	321.469	4.55	4.54	-0.54
2083.00	36.700	324.690	2012.86	-369.51	299.10	-234.74	1742724.37	14616967.78	40°14'49.9732"N	80°38'0.0838"W	380.21	321.874	4.63	4.62	0.55
2176.00	39.210	323.490	2086.19	-425.57	345.41	-268.30	1742690.83	14617014.08	40°14'50.4322"N	80°38'0.5141"W	437.37	322.162	2.81	2.70	-1.29



RECEIVED
Office of Oil and Gas
APR 8 2021
WV Department of
Environmental Protection

Actual Wellpath Report

Edward Zatta BRK 6H AWP Proj: 18031'
Page 3 of 10



REFERENCE WELLPATH IDENTIFICATION			
Operator	SWN PRODUCTION COMPANY, LLC	Well	Edward Zatta BRK 6H
Field	Brooke	API	47-009-00303-0000
Facility	Edward Zatta BRK Pad	Wellbore	Edward Zatta BRK 6H AWB
Slot	Slot 6H		

WELLPATH DATA (208 stations)															
MD [ft]	Inclination [°]	Azimuth [°]	TVD [ft]	Vert Sect [ft]	North [ft]	East [ft]	Grid East [US ft]	Grid North [US ft]	Latitude	Longitude	Closure Dist [ft]	Closure Dir [°]	DLS [°/100ft]	Build Rate [°/100ft]	Turn Rate [°/100ft]
2267.00	43.020	322.890	2154.73	-484.02	393.30	-304.15	1742654.99	14617061.95	40°14'50.9069"N	80°38'0.9739"W	497.19	322.284	4.21	4.19	-0.66
2360.00	46.650	323.360	2220.67	-548.06	445.75	-343.49	1742615.67	14617114.38	40°14'51.4268"N	80°38'1.4784"W	562.74	322.383	3.92	3.90	0.51
2452.00	47.940	325.300	2283.07	-614.38	500.68	-382.89	1742576.27	14617169.28	40°14'51.9712"N	80°38'1.9837"W	630.31	322.593	2.09	1.40	2.11
2545.00	47.890	327.620	2345.41	-682.53	558.20	-421.03	1742538.16	14617226.78	40°14'52.5411"N	80°38'2.4724"W	699.18	322.974	1.85	-0.05	2.49
2637.00	47.720	327.120	2407.20	-750.01	615.60	-457.78	1742501.42	14617284.16	40°14'53.1099"N	80°38'2.9433"W	767.15	323.364	0.44	-0.18	-0.54
2728.00	47.970	327.500	2468.27	-816.78	672.37	-494.21	1742465.00	14617340.91	40°14'53.6724"N	80°38'3.4101"W	834.47	323.683	0.41	0.27	0.42
2820.00	47.980	327.370	2529.86	-884.45	729.97	-531.00	1742428.23	14617398.49	40°14'54.2431"N	80°38'3.8815"W	902.67	323.967	0.11	0.01	-0.14
2913.00	48.010	327.270	2592.10	-952.85	788.14	-568.31	1742390.93	14617456.63	40°14'54.8194"N	80°38'4.3596"W	971.67	324.205	0.09	0.03	-0.11
3003.00	47.870	327.390	2652.39	-1018.99	844.39	-604.38	1742354.87	14617512.86	40°14'55.3767"N	80°38'4.8218"W	1038.40	324.406	0.18	-0.16	0.13
3095.00	48.070	327.400	2713.99	-1086.65	901.96	-641.20	1742318.07	14617570.40	40°14'55.9471"N	80°38'5.2936"W	1106.65	324.591	0.22	0.22	0.01
3186.00	47.970	327.370	2774.85	-1153.62	958.94	-677.67	1742281.62	14617627.36	40°14'56.5116"N	80°38'5.7608"W	1174.22	324.752	0.11	-0.11	-0.03
3275.00	47.920	327.470	2834.47	-1219.04	1014.62	-713.25	1742246.05	14617683.02	40°14'57.0633"N	80°38'6.2168"W	1240.23	324.894	0.10	-0.06	0.11
3364.00	47.870	327.520	2894.14	-1284.43	1070.31	-748.73	1742210.58	14617738.69	40°14'57.6151"N	80°38'6.6714"W	1306.20	325.025	0.07	-0.06	0.06
3454.00	47.980	327.480	2954.45	-1350.59	1126.65	-784.63	1742174.70	14617795.01	40°14'58.1733"N	80°38'7.1313"W	1372.94	325.146	0.13	0.12	-0.04
3543.00	47.820	327.340	3014.12	-1415.96	1182.29	-820.19	1742139.14	14617850.63	40°14'58.7245"N	80°38'7.5871"W	1438.93	325.250	0.21	-0.18	-0.16
3632.00	47.850	327.430	3073.86	-1481.27	1237.85	-855.75	1742103.60	14617906.17	40°14'59.2751"N	80°38'8.0427"W	1504.85	325.343	0.08	0.03	0.10
3721.00	47.780	327.300	3133.63	-1546.56	1293.39	-891.32	1742068.05	14617961.68	40°14'59.8253"N	80°38'8.4984"W	1570.76	325.428	0.13	-0.08	-0.15
3810.00	47.960	327.600	3193.33	-1611.91	1349.02	-926.83	1742032.55	14618017.30	40°14'59.3765"N	80°38'8.9535"W	1636.73	325.510	0.32	0.20	0.34
3900.00	47.860	327.410	3253.66	-1678.05	1405.36	-962.71	1741996.69	14618073.61	40°15'0.9347"N	80°38'9.4132"W	1703.48	325.588	0.19	-0.11	-0.21
3989.00	47.840	327.200	3313.38	-1743.36	1460.89	-998.35	1741961.06	14618129.12	40°15'1.4848"N	80°38'9.8700"W	1769.43	325.652	0.18	-0.02	-0.24
4079.00	47.910	327.430	3373.75	-1809.43	1517.07	-1034.40	1741925.03	14618185.28	40°15'2.0415"N	80°38'10.3319"W	1836.16	325.712	0.20	0.08	0.26
4169.00	47.810	327.530	3434.14	-1875.51	1573.34	-1070.27	1741889.16	14618241.53	40°15'2.5990"N	80°38'10.7916"W	1902.86	325.774	0.14	-0.11	0.11
4258.00	47.920	327.700	3493.85	-1940.89	1629.07	-1105.62	1741853.83	14618297.24	40°15'3.1512"N	80°38'11.2445"W	1968.83	325.836	0.19	0.12	0.19
4348.00	47.870	327.590	3554.19	-2007.03	1685.48	-1141.36	1741818.11	14618353.62	40°15'3.7100"N	80°38'11.7024"W	2035.57	325.895	0.11	-0.06	-0.12
4438.00	47.820	327.490	3614.59	-2073.11	1741.78	-1177.17	1741782.31	14618409.90	40°15'4.2678"N	80°38'12.1613"W	2102.26	325.947	0.10	-0.06	-0.11
4528.00	47.960	326.730	3674.94	-2139.16	1797.84	-1213.42	1741746.07	14618465.94	40°15'4.8233"N	80°38'12.6259"W	2169.01	325.983	0.65	0.16	-0.84
4617.00	47.580	327.610	3734.76	-2204.37	1853.21	-1249.15	1741710.36	14618521.29	40°15'5.3719"N	80°38'13.0838"W	2234.90	326.018	0.85	-0.43	0.99
4707.00	47.720	327.380	3795.39	-2270.23	1909.31	-1284.89	1741674.63	14618577.36	40°15'5.9276"N	80°38'13.5418"W	2301.39	326.061	0.24	0.16	-0.26
4797.00	47.580	327.550	3856.02	-2336.09	1965.38	-1320.67	1741638.87	14618633.42	40°15'6.4832"N	80°38'14.0002"W	2367.89	326.100	0.21	-0.16	0.19
4885.00	47.940	327.750	3915.18	-2400.63	2020.42	-1355.53	1741604.02	14618688.43	40°15'7.0285"N	80°38'14.4469"W	2433.01	326.142	0.44	0.41	0.23



RECEIVED
 Office of Oil and Gas
 APR 8 2021
 Environmental Protection
 WY Department of

Actual Wellpath Report

Edward Zatta BRK 6H AWP Proj: 18031'

Page 4 of 10



REFERENCE WELLPATH IDENTIFICATION			
Operator	SWN PRODUCTION COMPANY, LLC	Well	Edward Zatta BRK 6H
Field	Brooke	API	47-009-00303-0000
Facility	Edward Zatta BRK Pad	Wellbore	Edward Zatta BRK 6H AWB
Slot	Slot 6H		

WELLPATH DATA (208 stations)															
MD [ft]	Inclination [°]	Azimuth [°]	TVD [ft]	Vert Sect [ft]	North [ft]	East [ft]	Grid East [US ft]	Grid North [US ft]	Latitude	Longitude	Closure Dist [ft]	Closure Dir [°]	DLS [°/100ft]	Build Rate [°/100ft]	Turn Rate [°/100ft]
4975.00	47.830	327.380	3975.53	-2466.75	2076.77	-1391.33	1741568.23	14618744.76	40°15'7.5868"N	80°38'14.9057"W	2499.75	326.180	0.33	-0.12	-0.41
5064.00	47.790	327.560	4035.30	-2532.05	2132.36	-1426.79	1741532.78	14618800.33	40°15'8.1376"N	80°38'15.3601"W	2565.68	326.213	0.16	-0.04	0.20
5154.00	47.180	327.350	4096.12	-2597.74	2188.29	-1462.48	1741497.11	14618856.23	40°15'8.6916"N	80°38'15.8174"W	2632.00	326.244	0.70	-0.68	-0.23
5244.00	48.010	327.150	4156.82	-2663.50	2244.18	-1498.43	1741461.17	14618912.10	40°15'9.2454"N	80°38'16.2781"W	2698.45	326.269	0.94	0.92	-0.22
5334.00	48.000	327.280	4217.03	-2729.69	2300.41	-1534.65	1741424.97	14618968.31	40°15'9.8025"N	80°38'16.7423"W	2765.33	326.292	0.11	-0.01	0.14
5423.00	47.730	327.350	4276.74	-2795.02	2355.96	-1570.29	1741389.34	14619023.84	40°15'10.3529"N	80°38'17.1990"W	2831.32	326.316	0.31	-0.30	0.08
5513.00	48.070	327.410	4337.08	-2861.13	2412.20	-1606.29	1741353.36	14619080.06	40°15'10.9101"N	80°38'17.6604"W	2898.08	326.340	0.38	0.38	0.07
5602.00	48.040	327.760	4396.57	-2926.69	2468.09	-1641.77	1741317.89	14619135.92	40°15'11.4638"N	80°38'18.1151"W	2964.27	326.368	0.29	-0.03	0.39
5692.00	48.070	327.620	4456.73	-2993.01	2524.66	-1677.55	1741282.12	14619192.48	40°15'12.0243"N	80°38'18.5736"W	3031.19	326.397	0.12	0.03	-0.16
5782.00	48.060	327.550	4516.87	-3059.33	2581.18	-1713.44	1741246.24	14619248.97	40°15'12.5843"N	80°38'19.0335"W	3098.13	326.423	0.06	-0.01	-0.08
5871.00	48.330	327.620	4576.20	-3125.04	2637.19	-1749.01	1741210.70	14619304.96	40°15'13.1391"N	80°38'19.4892"W	3164.45	326.447	0.31	0.30	0.08
5961.00	43.500	327.390	4638.80	-3189.04	2691.70	-1783.72	1741175.99	14619359.45	40°15'13.6792"N	80°38'19.9341"W	3229.07	326.469	5.37	-5.37	-0.26
6050.00	34.170	323.780	4708.05	-3243.97	2737.77	-1815.07	1741144.66	14619405.51	40°15'14.1358"N	80°38'20.3360"W	3284.80	326.457	10.78	-10.48	-4.06
6140.00	26.460	316.770	4785.71	-3287.78	2772.84	-1843.79	1741115.95	14619440.56	40°15'14.4834"N	80°38'20.7045"W	3329.89	326.378	9.41	-8.57	-7.79
6231.00	19.690	309.230	4869.40	-3320.77	2797.34	-1869.59	1741090.16	14619465.05	40°15'14.7266"N	80°38'21.0360"W	3364.59	326.243	8.10	-7.44	-8.29
6321.00	13.900	296.910	4955.55	-3342.85	2811.84	-1891.00	1741068.76	14619479.54	40°15'14.8707"N	80°38'21.3113"W	3388.55	326.079	7.52	-6.43	-13.69
6411.00	10.310	264.280	5043.64	-3353.90	2815.93	-1908.68	1741051.09	14619483.63	40°15'14.9119"N	80°38'21.5391"W	3401.84	325.870	8.43	-3.99	-36.26
6501.00	10.600	213.330	5132.32	-3352.09	2808.20	-1921.26	1741038.50	14619475.90	40°15'14.8360"N	80°38'21.7019"W	3402.53	325.622	9.95	0.32	-56.61
6590.00	15.870	189.800	5218.99	-3337.65	2789.34	-1927.84	1741031.93	14619457.05	40°15'14.6499"N	80°38'21.7877"W	3390.72	325.350	8.35	5.92	-26.44
6680.00	23.220	177.200	5303.78	-3310.96	2759.44	-1929.07	1741030.70	14619427.16	40°15'14.3545"N	80°38'21.8052"W	3366.87	325.043	9.37	8.17	-14.00
6770.00	30.540	171.300	5384.02	-3272.41	2719.05	-1924.74	1741035.03	14619386.79	40°15'13.9552"N	80°38'21.7514"W	3331.35	324.706	8.65	8.13	-6.56
6859.00	37.470	169.790	5457.76	-3224.36	2670.00	-1916.51	1741043.26	14619337.76	40°15'13.4701"N	80°38'21.6478"W	3286.63	324.329	7.84	7.79	-1.70
6949.00	46.980	167.780	5524.33	-3165.55	2610.76	-1904.67	1741055.10	14619278.54	40°15'12.8843"N	80°38'21.4982"W	3231.69	323.888	10.67	10.57	-2.23
7038.00	55.040	164.350	5580.29	-3097.59	2543.72	-1887.91	1741071.84	14619211.53	40°15'12.2212"N	80°38'21.2856"W	3167.77	323.418	9.54	9.06	-3.85
7131.00	63.700	160.900	5627.64	-3018.27	2467.47	-1863.94	1741095.81	14619135.31	40°15'11.4667"N	80°38'20.9804"W	3092.36	322.932	9.84	9.31	-3.71
7220.00	71.250	161.080	5661.71	-2936.50	2389.80	-1837.18	1741122.55	14619057.67	40°15'10.6981"N	80°38'20.6394"W	3014.37	322.448	8.49	8.48	0.20
7265.00	74.360	159.920	5675.01	-2893.68	2349.29	-1822.83	1741136.90	14619017.17	40°15'10.2971"N	80°38'20.4565"W	2973.53	322.192	7.34	6.91	-2.58
7309.00	76.850	157.100	5685.95	-2851.12	2309.64	-1807.22	1741152.51	14618977.54	40°15'9.9047"N	80°38'20.2572"W	2932.66	321.958	8.40	5.66	-6.41
7352.00	77.530	156.290	5695.48	-2809.20	2271.13	-1790.63	1741169.09	14618939.05	40°15'9.5235"N	80°38'20.0452"W	2892.13	321.747	2.42	1.58	-1.88
7399.00	82.410	155.880	5703.67	-2762.94	2228.84	-1771.87	1741187.84	14618896.77	40°15'9.1048"N	80°38'19.8055"W	2847.32	321.516	10.42	10.38	-0.87



RECEIVED
 Office of Oil and Gas
 APR 8 2021
 WV Department of
 Environmental Protection

Actual Wellpath Report

Edward Zatta BRK 6H AWP Proj: 18031'

Page 5 of 10



REFERENCE WELLPATH IDENTIFICATION			
Operator	SWN PRODUCTION COMPANY, LLC	Well	Edward Zatta BRK 6H
Field	Brooke	API	47-009-00303-0000
Facility	Edward Zatta BRK Pad	Wellbore	Edward Zatta BRK 6H AWB
Slot	Slot 6H		

WELLPATH DATA (208 stations)															
MD [ft]	Inclination [°]	Azimuth [°]	TVD [ft]	Vert Sect [ft]	North [ft]	East [ft]	Grid East [US ft]	Grid North [US ft]	Latitude	Longitude	Closure Dist [ft]	Closure Dir [°]	DLS [°/100ft]	Build Rate [°/100ft]	Turn Rate [°/100ft]
7486.00	88.980	154.840	5710.19	-2676.23	2150.03	-1735.72	1741223.98	14618817.99	40°15'8.3246"N	80°38'19.3434"W	2763.21	321.086	7.65	7.55	-1.20
7576.00	89.450	155.840	5711.43	-2586.24	2068.24	-1698.17	1741261.51	14618736.24	40°15'7.5149"N	80°38'18.8635"W	2676.08	320.612	1.23	0.52	1.11
7667.00	89.350	153.360	5712.38	-2495.27	1986.05	-1659.15	1741300.52	14618654.08	40°15'6.7011"N	80°38'18.3645"W	2587.89	320.125	2.73	-0.11	-2.73
7754.00	88.890	152.060	5713.72	-2408.38	1908.75	-1619.26	1741340.39	14618576.80	40°15'5.9356"N	80°38'17.8541"W	2503.06	319.691	1.58	-0.53	-1.49
7845.00	89.260	152.700	5715.19	-2317.53	1828.13	-1577.08	1741382.56	14618496.21	40°15'5.1372"N	80°38'17.3144"W	2414.38	319.216	0.81	0.41	0.70
7934.00	89.420	153.710	5716.21	-2228.61	1748.69	-1536.96	1741422.66	14618416.81	40°15'4.3506"N	80°38'16.8011"W	2328.13	318.687	1.15	0.18	1.13
8023.00	89.600	156.220	5716.97	-2139.62	1668.06	-1499.30	1741460.30	14618336.21	40°15'3.5524"N	80°38'16.3197"W	2242.84	318.050	2.83	0.20	2.82
8113.00	88.830	155.380	5718.21	-2049.63	1585.98	-1462.41	1741497.18	14618254.16	40°15'2.7398"N	80°38'15.8483"W	2157.31	317.321	1.27	-0.86	-0.93
8203.00	89.080	155.400	5719.85	-1959.65	1504.17	-1424.94	1741534.63	14618172.38	40°15'1.9298"N	80°38'15.3693"W	2071.95	316.549	0.28	0.28	0.02
8296.00	88.740	155.160	5721.62	-1866.67	1419.71	-1386.06	1741573.50	14618087.95	40°15'1.0936"N	80°38'14.8723"W	1984.12	315.687	0.45	-0.37	-0.26
8385.00	89.170	155.120	5723.24	-1777.68	1338.97	-1348.65	1741610.90	14618007.24	40°15'0.2942"N	80°38'14.3941"W	1900.44	314.794	0.49	0.48	-0.04
8475.00	89.020	155.730	5724.66	-1687.69	1257.13	-1311.22	1741648.31	14617925.44	40°14'59.4840"N	80°38'13.9158"W	1816.50	313.793	0.70	-0.17	0.68
8568.00	89.200	155.540	5726.11	-1594.71	1172.42	-1272.86	1741686.66	14617840.77	40°14'58.6454"N	80°38'13.4255"W	1730.53	312.648	0.28	0.19	-0.20
8658.00	89.420	154.910	5727.19	-1504.71	1090.71	-1235.15	1741724.35	14617759.09	40°14'57.8364"N	80°38'12.9434"W	1647.80	311.446	0.74	0.24	-0.70
8747.00	89.600	155.680	5727.95	-1415.72	1009.86	-1197.95	1741761.53	14617678.27	40°14'57.0360"N	80°38'12.4680"W	1566.82	310.131	0.89	0.20	0.87
8840.00	89.570	155.710	5728.62	-1322.72	925.11	-1159.68	1741799.80	14617593.55	40°14'56.1969"N	80°38'11.9788"W	1483.47	308.580	0.05	-0.03	0.03
8933.00	89.290	154.640	5729.55	-1229.73	840.71	-1120.63	1741838.82	14617509.18	40°14'55.3613"N	80°38'11.4798"W	1400.93	306.877	1.19	-0.30	-1.15
9023.00	89.540	155.500	5730.47	-1139.74	759.10	-1082.70	1741876.74	14617427.60	40°14'54.5533"N	80°38'10.9949"W	1322.30	305.035	1.00	0.28	0.96
9112.00	89.630	155.480	5731.11	-1050.74	678.12	-1045.78	1741913.65	14617346.66	40°14'53.7516"N	80°38'10.5230"W	1246.39	302.961	0.10	0.10	-0.02
9205.00	89.140	155.050	5732.11	-957.75	593.66	-1006.87	1741952.55	14617262.23	40°14'52.9154"N	80°38'10.0257"W	1168.85	300.524	0.70	-0.53	-0.46
9298.00	89.660	155.500	5733.08	-864.75	509.19	-967.97	1741991.43	14617177.79	40°14'52.0791"N	80°38'9.5285"W	1093.73	297.746	0.74	0.56	0.48
9390.00	89.910	155.430	5733.43	-772.75	425.50	-929.77	1742029.61	14617094.13	40°14'51.2505"N	80°38'9.0403"W	1022.51	294.591	0.28	0.27	-0.08
9483.00	89.540	155.810	5733.88	-679.76	340.79	-891.38	1742067.99	14617009.46	40°14'50.4119"N	80°38'8.5497"W	954.30	290.923	0.57	-0.40	0.41
9576.00	89.630	155.230	5734.55	-586.76	256.15	-852.84	1742106.51	14616924.85	40°14'49.5740"N	80°38'8.0572"W	890.48	286.718	0.63	0.10	-0.62
9669.00	89.380	154.670	5735.35	-493.77	171.90	-813.47	1742145.87	14616840.64	40°14'48.7398"N	80°38'7.5539"W	831.43	281.932	0.66	-0.27	-0.60
9761.00	89.420	155.080	5736.32	-401.78	88.61	-774.41	1742184.91	14616757.38	40°14'47.9152"N	80°38'7.0546"W	779.46	276.528	0.45	0.04	0.45
9854.00	89.420	155.420	5737.26	-308.78	4.16	-735.48	1742223.83	14616672.96	40°14'47.0791"N	80°38'6.5570"W	735.49	270.324	0.37	0.00	0.37
9946.00	90.060	155.620	5737.68	-216.78	-79.57	-697.35	1742261.94	14616589.26	40°14'46.2501"N	80°38'6.0698"W	701.88	263.491	0.73	0.70	0.22
10039.00	89.540	155.250	5738.00	-123.79	-164.15	-658.69	1742300.59	14616504.71	40°14'45.4127"N	80°38'5.5757"W	678.84	256.007	0.69	-0.56	-0.40
10132.00	89.910	155.690	5738.45	-30.79	-248.75	-620.08	1742339.18	14616420.14	40°14'44.5751"N	80°38'5.0823"W	668.12	248.141	0.62	0.40	0.47



RECEIVED
 Office of Oil and Gas
 APR 8 2021
 WY Department of
 Environmental Protection

Actual Wellpath Report

Edward Zatta BRK 6H AWP Proj: 18031'

Page 6 of 10



REFERENCE WELLPATH IDENTIFICATION			
Operator	SWN PRODUCTION COMPANY, LLC	Well	Edward Zatta BRK 6H
Field	Brooke	API	47-009-00303-0000
Facility	Edward Zatta BRK Pad	Wellbore	Edward Zatta BRK 6H AWB
Slot	Slot 6H		

WELLPATH DATA (208 stations)															
MD [ft]	Inclination [°]	Azimuth [°]	TVD [ft]	Vert Sect [ft]	North [ft]	East [ft]	Grid East [US ft]	Grid North [US ft]	Latitude	Longitude	Closure Dist [ft]	Closure Dir [°]	DLS [°/100ft]	Build Rate [°/100ft]	Turn Rate [°/100ft]
10224.00	89.780	155.820	5738.70	61.21	-332.64	-582.30	1742376.94	14616336.29	40°14'43.7446"N	80°38'4.5996"W	670.62	240.263	0.20	-0.14	0.14
10317.00	89.600	155.480	5739.20	154.21	-417.36	-543.96	1742415.27	14616251.60	40°14'42.9058"N	80°38'4.1096"W	685.63	232.502	0.41	-0.19	-0.37
10410.00	89.480	155.000	5739.95	247.21	-501.81	-505.01	1742454.21	14616167.18	40°14'42.0698"N	80°38'3.6118"W	711.93	225.182	0.53	-0.13	-0.52
10503.00	89.320	154.970	5740.92	340.20	-586.08	-465.69	1742493.52	14616082.94	40°14'41.2354"N	80°38'3.1092"W	748.57	218.470	0.18	-0.17	-0.03
10595.00	89.750	155.400	5741.67	432.19	-669.59	-427.08	1742532.11	14615999.47	40°14'40.4087"N	80°38'2.6157"W	794.19	212.531	0.66	0.47	0.47
10688.00	90.000	155.440	5741.87	525.19	-754.16	-388.39	1742570.78	14615914.94	40°14'39.5714"N	80°38'2.1214"W	848.29	207.248	0.27	0.27	0.04
10781.00	89.750	155.100	5742.07	618.19	-838.63	-349.49	1742609.67	14615830.50	40°14'38.7350"N	80°38'1.6242"W	908.54	202.623	0.45	-0.27	-0.37
10873.00	89.630	154.660	5742.57	710.18	-921.93	-310.43	1742648.71	14615747.23	40°14'37.9103"N	80°38'1.1250"W	972.79	198.609	0.50	-0.13	-0.48
10966.00	90.090	155.430	5742.80	803.18	-1006.24	-271.19	1742687.93	14615662.95	40°14'37.0755"N	80°38'0.6235"W	1042.15	195.084	0.96	0.49	0.83
11059.00	89.630	155.350	5743.02	896.18	-1090.79	-232.47	1742726.64	14615578.43	40°14'36.2384"N	80°38'0.1286"W	1115.29	192.031	0.50	-0.49	-0.09
11152.00	90.090	156.020	5743.25	989.18	-1175.54	-194.17	1742764.92	14615493.71	40°14'35.3994"N	80°37'59.6393"W	1191.47	189.379	0.87	0.49	0.72
11243.00	89.850	155.180	5743.30	1080.18	-1258.42	-156.58	1742802.50	14615410.88	40°14'34.5789"N	80°37'59.1590"W	1268.12	187.093	0.96	-0.26	-0.92
11336.00	89.690	155.080	5743.67	1173.17	-1342.79	-117.47	1742841.60	14615326.53	40°14'33.7435"N	80°37'58.6591"W	1347.92	185.000	0.20	-0.17	-0.11
11429.00	89.570	155.430	5744.27	1266.17	-1427.25	-78.54	1742880.51	14615242.11	40°14'32.9073"N	80°37'58.1616"W	1429.41	183.150	0.40	-0.13	0.38
11521.00	89.200	154.290	5745.26	1358.16	-1510.53	-39.46	1742919.57	14615158.86	40°14'32.0828"N	80°37'57.6621"W	1511.04	181.496	1.30	-0.40	-1.24
11613.00	89.320	154.890	5746.45	1450.14	-1593.62	0.01	1742959.03	14615075.80	40°14'31.2601"N	80°37'57.1575"W	1593.62	180.000	0.67	0.13	0.65
11706.00	89.260	154.700	5747.60	1543.12	-1677.76	39.61	1742998.62	14614991.70	40°14'30.4270"N	80°37'56.6514"W	1678.23	178.647	0.21	-0.06	-0.20
11799.00	89.050	154.790	5748.97	1636.11	-1761.86	79.29	1743038.28	14614907.63	40°14'29.5943"N	80°37'56.1443"W	1763.64	177.423	0.25	-0.23	0.10
11891.00	89.350	155.070	5750.26	1728.09	-1845.19	118.27	1743077.24	14614824.33	40°14'28.7693"N	80°37'55.6461"W	1848.97	176.333	0.45	0.33	0.30
11981.00	89.480	154.950	5751.18	1818.08	-1926.76	156.29	1743115.25	14614742.80	40°14'27.9617"N	80°37'55.1602"W	1933.08	175.363	0.20	0.14	-0.13
12074.00	89.050	155.390	5752.37	1911.07	-2011.15	195.34	1743154.28	14614658.43	40°14'27.1261"N	80°37'54.6612"W	2020.61	174.452	0.66	-0.46	0.47
12167.00	89.540	155.900	5753.51	2004.07	-2095.87	233.68	1743192.61	14614573.75	40°14'26.2874"N	80°37'54.1712"W	2108.86	173.638	0.76	0.53	0.55
12256.00	89.080	155.630	5754.58	2093.06	-2177.02	270.21	1743229.13	14614492.63	40°14'25.4840"N	80°37'53.7045"W	2193.72	172.925	0.60	-0.52	-0.30
12349.00	89.480	155.700	5755.75	2186.05	-2261.75	308.53	1743267.43	14614407.93	40°14'24.6451"N	80°37'53.2149"W	2282.70	172.232	0.44	0.43	0.08
12439.00	89.380	155.660	5756.65	2276.05	-2343.76	345.60	1743304.48	14614325.96	40°14'23.8332"N	80°37'52.7414"W	2369.10	171.612	0.12	-0.11	-0.04
12532.00	89.570	155.840	5757.50	2369.04	-2428.55	383.79	1743342.66	14614241.20	40°14'22.9937"N	80°37'52.2534"W	2458.69	171.020	0.28	0.20	0.19
12625.00	89.170	155.940	5758.52	2462.03	-2513.43	421.78	1743380.64	14614156.35	40°14'22.1534"N	80°37'51.7681"W	2548.57	170.474	0.44	-0.43	0.11
12714.00	89.690	156.680	5759.41	2551.02	-2594.92	457.54	1743416.38	14614074.89	40°14'21.3466"N	80°37'51.3114"W	2634.95	170.000	1.02	0.58	0.83
12805.00	89.170	156.040	5760.31	2642.00	-2678.28	494.02	1743452.85	14613991.56	40°14'20.5214"N	80°37'50.8454"W	2723.47	169.549	0.91	-0.57	-0.70
12893.00	89.290	155.950	5761.50	2729.99	-2758.66	529.82	1743488.63	14613911.21	40°14'19.7256"N	80°37'50.3881"W	2809.08	169.128	0.17	0.14	-0.10



RECEIVED
 Office of Oil and Gas
 APR 8 2021
 W Department of
 Environmental Protection

Actual Wellpath Report

Edward Zatta BRK 6H AWP Proj: 18031'

Page 7 of 10



REFERENCE WELLPATH IDENTIFICATION			
Operator	SWN PRODUCTION COMPANY, LLC	Well	Edward Zatta BRK 6H
Field	Brooke	API	47-009-00303-0000
Facility	Edward Zatta BRK Pad	Wellbore	Edward Zatta BRK 6H AWB
Slot	Slot 6H		

WELLPATH DATA (208 stations)															
MD [ft]	Inclination [°]	Azimuth [°]	TVD [ft]	Vert Sect [ft]	North [ft]	East [ft]	Grid East [US ft]	Grid North [US ft]	Latitude	Longitude	Closure Dist [ft]	Closure Dir [°]	DLS [°/100ft]	Build Rate [°/100ft]	Turn Rate [°/100ft]
12983.00	89.170	155.800	5762.71	2819.98	-2840.80	566.60	1743525.40	14613829.11	40°14'18.9124"N	80°37'49.9182"W	2896.75	168.720	0.21	-0.13	-0.17
13071.00	89.350	156.070	5763.84	2907.97	-2921.14	602.48	1743561.27	14613748.80	40°14'18.1170"N	80°37'49.4599"W	2982.63	168.346	0.37	0.20	0.31
13161.00	89.110	156.090	5765.05	2997.96	-3003.40	638.97	1743597.74	14613666.57	40°14'17.3026"N	80°37'48.9938"W	3070.62	167.989	0.27	-0.27	0.02
13250.00	89.660	156.500	5766.01	3086.94	-3084.89	674.75	1743633.51	14613585.11	40°14'16.4959"N	80°37'48.5369"W	3157.82	167.662	0.77	0.62	0.46
13340.00	89.570	155.310	5766.61	3176.94	-3167.04	711.49	1743670.23	14613502.99	40°14'15.6825"N	80°37'48.0675"W	3245.98	167.338	1.33	-0.10	-1.32
13429.00	88.550	153.070	5768.07	3265.90	-3247.15	750.23	1743708.96	14613422.92	40°14'14.8894"N	80°37'47.5723"W	3332.69	166.990	2.77	-1.15	-2.52
13520.00	88.890	156.070	5770.11	3356.85	-3329.30	789.29	1743748.01	14613340.80	40°14'14.0759"N	80°37'47.0730"W	3421.58	166.663	3.32	0.37	3.30
13613.00	89.450	156.070	5771.45	3449.84	-3414.30	827.01	1743785.71	14613255.83	40°14'13.2345"N	80°37'46.5913"W	3513.03	166.384	0.60	0.60	0.00
13703.00	89.350	156.480	5772.40	3539.82	-3496.69	863.22	1743821.91	14613173.48	40°14'12.4188"N	80°37'46.1288"W	3601.66	166.133	0.47	-0.11	0.46
13795.00	88.680	155.730	5773.98	3631.80	-3580.79	900.48	1743859.15	14613089.41	40°14'11.5862"N	80°37'45.6529"W	3692.28	165.884	1.09	-0.73	-0.82
13887.00	89.540	156.430	5775.41	3723.79	-3664.88	937.78	1743896.43	14613005.35	40°14'10.7537"N	80°37'45.1765"W	3782.95	165.647	1.21	0.93	0.76
13980.00	89.050	155.980	5776.55	3816.77	-3749.96	975.30	1743933.94	14612920.30	40°14'9.9113"N	80°37'44.6973"W	3874.72	165.421	0.72	-0.53	-0.48
14073.00	89.420	156.340	5777.79	3909.76	-3835.02	1012.88	1743971.51	14612835.27	40°14'9.0693"N	80°37'44.2173"W	3966.52	165.205	0.56	0.40	0.39
14165.00	89.050	155.840	5779.02	4001.74	-3919.12	1050.17	1744008.78	14612751.21	40°14'8.2367"N	80°37'43.7411"W	4057.38	164.999	0.68	-0.40	-0.54
14257.00	89.080	156.100	5780.52	4093.73	-4003.13	1087.63	1744046.22	14612667.23	40°14'7.4049"N	80°37'43.2626"W	4148.25	164.800	0.28	0.03	0.28
14350.00	89.110	155.960	5781.99	4186.71	-4088.10	1125.40	1744083.99	14612582.29	40°14'6.5637"N	80°37'42.7801"W	4240.18	164.608	0.15	0.03	-0.15
14443.00	89.110	156.000	5783.44	4279.70	-4173.04	1163.26	1744121.82	14612497.39	40°14'5.7228"N	80°37'42.2967"W	4332.14	164.424	0.04	0.00	0.04
14535.00	89.140	156.000	5784.84	4371.68	-4257.07	1200.67	1744159.22	14612413.39	40°14'4.8908"N	80°37'41.8188"W	4423.15	164.249	0.03	0.03	0.00
14628.00	89.200	156.300	5786.19	4464.67	-4342.12	1238.27	1744196.81	14612328.37	40°14'4.0488"N	80°37'41.3386"W	4515.24	164.083	0.33	0.06	0.32
14717.00	89.080	155.550	5787.52	4553.65	-4423.37	1274.57	1744233.10	14612247.15	40°14'3.2445"N	80°37'40.8749"W	4603.34	163.926	0.85	-0.13	-0.84
14807.00	89.080	155.550	5788.97	4643.64	-4505.29	1311.82	1744270.33	14612165.27	40°14'2.4334"N	80°37'40.3991"W	4692.39	163.766	0.00	0.00	0.00
14897.00	89.140	155.910	5790.37	4733.63	-4587.33	1348.81	1744307.30	14612083.26	40°14'1.6212"N	80°37'39.9266"W	4781.51	163.615	0.41	0.07	0.40
14986.00	89.080	154.760	5791.75	4822.62	-4668.20	1385.94	1744344.42	14612002.43	40°14'0.8205"N	80°37'39.4522"W	4869.59	163.464	1.29	-0.07	-1.29
15074.00	88.950	155.110	5793.26	4910.60	-4747.90	1423.22	1744381.68	14611922.76	40°14'0.0314"N	80°37'38.9759"W	4956.62	163.313	0.42	-0.15	0.40
15164.00	89.200	154.480	5794.71	5000.58	-4829.32	1461.54	1744419.99	14611841.37	40°13'59.2252"N	80°37'38.4862"W	5045.63	163.162	0.75	0.28	-0.70
15253.00	88.980	153.280	5796.13	5089.53	-4909.22	1500.72	1744459.15	14611761.50	40°13'58.4341"N	80°37'37.9854"W	5133.47	163.002	1.37	-0.25	-1.35
15341.00	89.140	153.160	5797.57	5177.45	-4987.77	1540.36	1744498.78	14611682.98	40°13'57.6562"N	80°37'37.4785"W	5220.20	162.838	0.23	0.18	-0.14
15429.00	89.230	156.100	5798.82	5265.42	-5067.26	1578.06	1744536.46	14611603.51	40°13'56.8690"N	80°37'36.9968"W	5307.30	162.702	3.34	0.10	3.34
15517.00	89.200	155.160	5800.03	5353.41	-5147.41	1614.37	1744572.76	14611523.39	40°13'56.0755"N	80°37'36.5330"W	5394.63	162.587	1.07	-0.03	-1.07
15606.00	89.540	156.240	5801.01	5442.41	-5228.52	1650.99	1744609.36	14611442.32	40°13'55.2725"N	80°37'36.0652"W	5482.99	162.476	1.27	0.38	1.21



RECEIVED
 Office of Oil and Gas
 APR 8 2021
 MW Department of
 Environmental Protection

Actual Wellpath Report

Edward Zatta BRK 6H AWP Proj: 18031'

Page 8 of 10



REFERENCE WELLPATH IDENTIFICATION			
Operator	SWN PRODUCTION COMPANY, LLC	Well	Edward Zatta BRK 6H
Field	Brooke	API	47-009-00303-0000
Facility	Edward Zatta BRK Pad	Wellbore	Edward Zatta BRK 6H AWB
Slot	Slot 6H		

WELLPATH DATA (208 stations) † = interpolated, ‡ = extrapolated station															
MD [ft]	Inclination [°]	Azimuth [°]	TVD [ft]	Vert Sect [ft]	North [ft]	East [ft]	Grid East [US ft]	Grid North [US ft]	Latitude	Longitude	Closure Dist [ft]	Closure Dir [°]	DLS [°/100ft]	Build Rate [°/100ft]	Turn Rate [°/100ft]
15694.00	88.950	155.670	5802.17	5530.40	-5308.88	1686.84	1744645.20	14611361.99	40°13'54.4769"N	80°37'35.6073"W	5570.42	162.373	0.93	-0.67	-0.65
15783.00	89.140	155.130	5803.65	5619.38	-5389.79	1723.88	1744682.23	14611281.11	40°13'53.6758"N	80°37'35.1341"W	5658.76	162.264	0.64	0.21	-0.61
15872.00	89.140	156.040	5804.99	5708.37	-5470.82	1760.67	1744719.00	14611200.11	40°13'52.8736"N	80°37'34.6643"W	5747.16	162.160	1.02	0.00	1.02
15960.00	89.450	156.190	5806.07	5796.36	-5551.28	1796.30	1744754.62	14611119.69	40°13'52.0770"N	80°37'34.2093"W	5834.67	162.069	0.39	0.35	0.17
16049.00	88.980	155.050	5807.29	5885.35	-5632.33	1833.03	1744791.33	14611038.66	40°13'51.2745"N	80°37'33.7401"W	5923.10	161.973	1.39	-0.53	-1.28
16137.00	89.050	154.530	5808.80	5973.33	-5711.94	1870.51	1744828.80	14610959.09	40°13'50.4863"N	80°37'33.2612"W	6010.41	161.868	0.60	0.08	-0.59
16226.00	88.920	154.100	5810.38	6062.30	-5792.13	1909.08	1744867.35	14610878.93	40°13'49.6922"N	80°37'32.7683"W	6098.64	161.758	0.50	-0.15	-0.48
16315.00	89.050	154.680	5811.95	6151.26	-5872.37	1947.54	1744905.80	14610798.72	40°13'48.8977"N	80°37'32.2767"W	6186.90	161.652	0.67	0.15	0.65
16403.00	89.420	156.380	5813.13	6239.25	-5952.46	1983.98	1744942.23	14610718.66	40°13'48.1048"N	80°37'31.8112"W	6274.39	161.567	1.98	0.42	1.93
16491.00	89.020	154.440	5814.33	6327.24	-6032.47	2020.60	1744978.83	14610638.68	40°13'47.3126"N	80°37'31.3435"W	6361.88	161.482	2.25	-0.45	-2.20
16580.00	89.020	153.250	5815.85	6416.19	-6112.34	2059.82	1745018.04	14610558.84	40°13'46.5217"N	80°37'30.8421"W	6450.08	161.376	1.34	0.00	-1.34
16669.00	89.020	152.510	5817.37	6505.08	-6191.54	2100.39	1745058.59	14610479.67	40°13'45.7373"N	80°37'30.3235"W	6538.11	161.261	0.83	0.00	-0.83
16757.00	88.980	154.190	5818.91	6593.00	-6270.18	2139.85	1745098.04	14610401.06	40°13'44.9586"N	80°37'29.8189"W	6625.26	161.157	1.91	-0.05	1.91
16846.00	89.140	156.740	5820.37	6681.98	-6351.13	2176.80	1745134.97	14610320.15	40°13'44.1572"N	80°37'29.3470"W	6713.81	161.081	2.87	0.18	2.87
16934.00	89.110	156.220	5821.71	6769.96	-6431.81	2211.92	1745170.07	14610239.50	40°13'43.3584"N	80°37'28.8987"W	6801.52	161.022	0.59	-0.03	-0.59
17023.00	89.260	157.380	5822.98	6858.93	-6513.60	2246.97	1745205.12	14610157.74	40°13'42.5487"N	80°37'28.4512"W	6890.27	160.967	1.31	0.17	1.30
17112.00	89.050	155.870	5824.29	6947.90	-6595.28	2282.28	1745240.41	14610076.09	40°13'41.7400"N	80°37'28.0004"W	6979.01	160.912	1.71	-0.24	-1.70
17200.00	89.350	157.290	5825.52	7035.87	-6676.02	2317.25	1745275.37	14609995.38	40°13'40.9407"N	80°37'27.5540"W	7066.75	160.858	1.65	0.34	1.61
17289.00	89.170	157.100	5826.67	7124.83	-6758.06	2351.74	1745309.85	14609913.38	40°13'40.1286"N	80°37'27.1137"W	7155.56	160.813	0.29	-0.20	-0.21
17378.00	89.260	157.070	5827.89	7213.78	-6840.03	2386.39	1745344.48	14609831.44	40°13'39.3171"N	80°37'26.6715"W	7244.37	160.767	0.11	0.10	-0.03
17466.00	89.290	157.250	5829.00	7301.74	-6921.12	2420.55	1745378.62	14609750.38	40°13'38.5144"N	80°37'26.2356"W	7332.19	160.724	0.21	0.03	0.20
17555.00	89.260	157.450	5830.13	7390.69	-7003.25	2454.82	1745412.88	14609668.28	40°13'37.7013"N	80°37'25.7982"W	7421.03	160.683	0.23	-0.03	0.22
17643.00	89.020	157.060	5831.45	7478.63	-7084.40	2488.84	1745446.89	14609587.16	40°13'36.8980"N	80°37'25.3641"W	7508.86	160.643	0.52	-0.27	-0.44
17732.00	89.540	157.700	5832.57	7567.58	-7166.55	2523.07	1745481.10	14609505.05	40°13'36.0848"N	80°37'24.9273"W	7597.71	160.605	0.93	0.58	0.72
17820.00	89.140	156.980	5833.58	7655.53	-7247.75	2556.97	1745514.99	14609423.88	40°13'35.2810"N	80°37'24.4947"W	7685.57	160.567	0.94	-0.45	-0.82
17909.00	89.320	157.140	5834.78	7744.49	-7329.70	2591.65	1745549.66	14609341.96	40°13'34.4697"N	80°37'24.0520"W	7774.39	160.527	0.27	0.20	0.18
17996.00	89.170	157.230	5835.92	7831.44	-7409.89	2625.39	1745583.38	14609261.80	40°13'33.6759"N	80°37'23.6215"W	7861.24	160.490	0.20	-0.17	0.10
18031.00†	89.170	157.230	5836.43	7866.42	-7442.16	2638.93	1745596.92	14609229.55	40°13'33.3564"N	80°37'23.4486"W	7896.18	160.476	0.00	0.00	0.00



RECEIVED
 Office of Oil and Gas
 APR 8 2021
 WV Department of
 Environmental Protection

Actual Wellpath Report

Edward Zatta BRK 6H AWP Proj: 18031'
 Page 9 of 10



REFERENCE WELLPATH IDENTIFICATION			
Operator	SWN PRODUCTION COMPANY, LLC	Well	Edward Zatta BRK 6H
Field	Brooke	API	47-009-00303-0000
Facility	Edward Zatta BRK Pad	Wellbore	Edward Zatta BRK 6H AWB
Slot	Slot 6H		

HOLE & CASING SECTIONS - Ref Wellbore: Edward Zatta BRK 6H AWB Ref Wellpath: Edward Zatta BRK 6H AWP Proj: 18031'									
String/Diameter	Start MD [ft]	End MD [ft]	Interval [ft]	Start TVD [ft]	End TVD [ft]	Start N/S [ft]	Start E/W [ft]	End N/S [ft]	End E/W [ft]
17.5in Open Hole	26.00	388.00	362.00	26.00	387.99	0.00	0.00	1.19	1.52
13.375in Casing Surface	26.00	388.00	362.00	26.00	387.99	0.00	0.00	1.19	1.52
12.25in Open Hole	388.00	1443.00	1055.00	387.99	1429.33	1.19	1.52	101.29	-81.29
9.625in Casing Intermediate	26.00	1421.00	1395.00	26.00	1408.02	0.00	0.00	96.48	-78.71
8.5in Open Hole	1443.00	18031.00	16588.00	1429.33	5836.43	101.29	-81.29	-7442.16	2638.93
5.5in Casing Production	26.00	18031.00	18005.00	26.00	5836.43	0.00	0.00	-7442.16	2638.93

TARGETS								
Name	TVD [ft]	North [ft]	East [ft]	Grid East [US ft]	Grid North [US ft]	Latitude	Longitude	Shape
Edward Zatta BRK 6H LP Rev-5	5699.00	2215.10	-1758.06	1741201.64	14618883.03	40°15'8.9685"N	80°38'19.6282"W	point
Edward Zatta BRK 6H BHL Rev-4	5838.22	-7461.90	2652.81	1745610.80	14609209.81	40°13'33.1607"N	80°37'23.2707"W	point

WELLPATH COMPOSITION - Ref Wellbore: Edward Zatta BRK 6H AWB Ref Wellpath: Edward Zatta BRK 6H AWP Proj: 18031'					
Start MD [ft]	End MD [ft]	Positional Uncertainty Model	Log Name/Comment	Wellbore	Survey Date
26.00	388.00	Gyrodata 2015 - GC+WIR+DPIPE	01 Gyrodata GC WIR DPIPE <17 1/2"> (50'-388')	Edward Zatta BRK 6H AWB	02/Oct/2020
388.00	1356.00	OWSG MWD rev2 + HRGM	02 Premier MWD <12 1/4"> (388')(497'-1356')	Edward Zatta BRK 6H AWB	02/Oct/2020
1356.00	18031.00	BH AutoTrak Curve (2019) (Short spacing)	03 BH AT Curve <8 1/2"> (1356')(1448'-17996')	Edward Zatta BRK 6H AWB	02/Oct/2020

REFERENCE WELLPATH IDENTIFICATION			
Operator	SWN PRODUCTION COMPANY, LLC	Well	Edward Zatta BRK 6H
Field	Brooke	API	47-009-00303-0000
Facility	Edward Zatta BRK Pad	Wellbore	Edward Zatta BRK 6H AWB
Slot	Slot 6H		

COMMENTS
<p>Wellpath general comments API: 47-009-00303-0000 BH Job #: 110576019 Rig: SDC 41 Duration: 10/3/20 - 10/8/20</p> <p>Gyrodata GC WIR DPIPE <17 1/2"> (50'-388') Premier MWD <12 1/4"> (388')(497'-1356') BH AT Curve <8 1/2"> (1356')(1448'-17996') Projected MD at TD: 18031'</p>

RECEIVED
Office of Oil and Gas
APR 8 2021
WV Department of
Environmental Protection