

Location: Brooke County, WV  
Field: Brooke  
Facility: Brian Teslovich BRK Pad

Slot: Slot 205H  
Well: Brian Teslovich BRK 205H  
Wellbore: Brian Teslovich BRK 205H AWB

Plot reference wellpath is Brian Teslovich BRK 205H AWB, gwp: 50' - 19561' Proj: 19586'  
True vertical depths are referenced to SDC 40 (KB)  
Reference wellpath measured depths are referenced to SDC 40 (KB)  
SDC 40 (KB) to Mean Sea Level: 1175.4 feet  
Mean Sea Level to Ground level (At Slot: Slot 205H): -1149.4 feet  
Offset wellpath MDs are referenced to each path's default MD datum

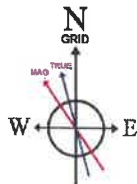
Grid System: NAD83 / UTM Zone 17 North, US feet  
North Reference: Grid north  
Scale: True distance  
Coordinates are in feet referenced to Slot  
Depths are in feet  
Created by: tranlam on 2021-10-28; Database: WA\_MPL\_EASTERNUS\_Defn

**Location Information**

Facility Name		Grid East (US ft)	Grid North (US ft)	Latitude	Longitude	
Brian Teslovich BRK Pad		1742753.670	14605851.360	40°13'0.0784"N	80°38'0.2985"W	
Slot	Local N (ft)	Local E (ft)	Grid East (US ft)	Grid North (US ft)	Latitude	Longitude
Slot 205H	-17.31	24.41	1742778.070	14605834.060	40°12'59.9064"N	80°37'59.9847"W
SDC 40 (KB) to Ground level (At Slot: Slot 205H)				26ft		
Mean Sea Level to Ground level (At Slot: Slot 205H)				-1149.4ft		
SDC 40 (KB) to Mean Sea Level				1175.4ft		

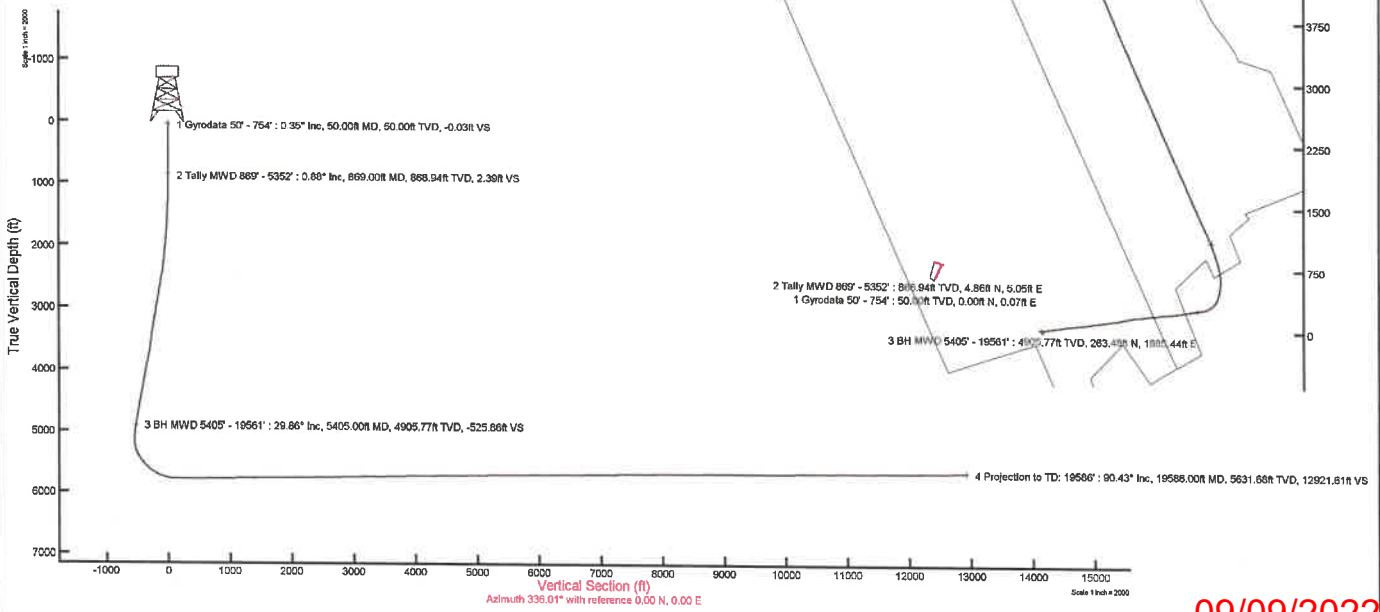
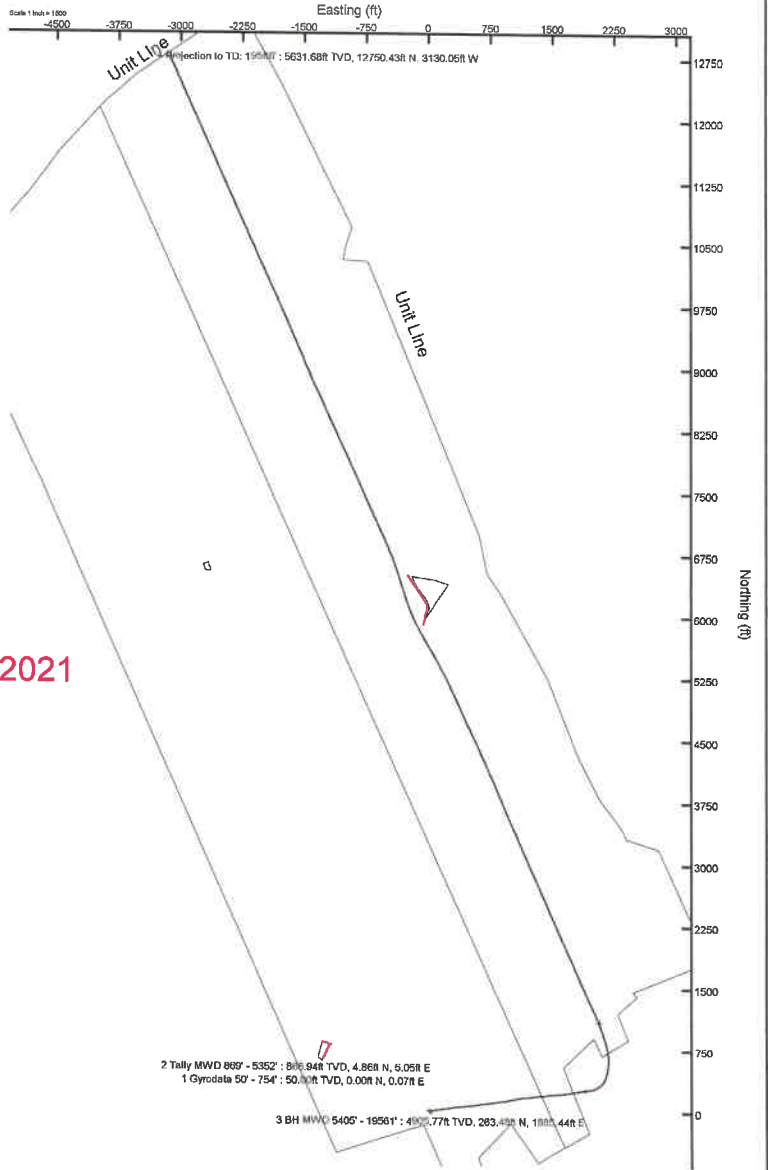
**Bottom Hole Location**

MD (ft)	Inc (°)	Az (°)	TVD (ft)	Local N (ft)	Local E (ft)	Grid East (US ft)	Grid North (US ft)	Latitude	Longitude
19586.00	90.430	338.040	5631.68	12750.43	-3130.05	1739849.24	14618579.51	40°15'6.0300"N	80°38'39.6733"W



HDGM2021v11.0 (1900.0 to 2022.0) Dip: 67.26° Field: 52166.9 nT  
Magnetic North is 8.20 degrees West of True North (at 10/13/2021)  
Grid North is 0.24 degrees East of True North  
To correct azimuth from True to Grid subtract 0.24 degrees  
To correct azimuth from Magnetic to Grid subtract 8.44 degrees

**API: 047-009-00312**  
**Duration 10.20.2021-10.23.2021**  
**Rig: SDC 40**  
**BH Job : 111083149**





# Actual Wellpath Report

Brian Teslovich BRK 205H AWB\_awp 50' - 19561' Proj: 19586'  
Page 1 of 11



### REFERENCE WELLPATH IDENTIFICATION

Operator	SWN PRODUCTION COMPANY, LLC	Well	Brian Teslovich BRK 205H
Field	Brooke	API	047-009-00312
Facility	Brian Teslovich BRK Pad	Wellbore	Brian Teslovich BRK 205H AWB
Slot	Slot 205H		

### REPORT SETUP INFORMATION

Projection System	NAD83 / UTM Zone 17 North, US feet	Software System	WellArchitect® 6.0
North Reference	Grid	User	Tranlam
Scale	0.999612	Report Generated	10/28/2021 at 10:39:21 AM
Convergence at slot	0.24° East	Database	WA_MPL_EASTERNUS_Defn

### WELLPATH LOCATION

	Local coordinates		Grid coordinates		Geographic coordinates	
	North[ft]	East[ft]	Easting[US ft]	Northing[US ft]	Latitude	Longitude
Slot Location	-17.31	24.41	1742778.07	14605834.06	40°12'59.9064"N	80°37'59.9847"W
Facility Reference Pt			1742753.67	14605851.36	40°13'0.0784"N	80°38'0.2985"W
Field Reference Pt			0.00	0.00	0°00'0.0000"	85°29'19.4780"W

### WELLPATH DATUM

Calculation method	Minimum curvature	SDC 40 (KB) to Facility Vertical Datum	1175.40ft
Horizontal Reference Pt	Slot	SDC 40 (KB) to Mean Sea Level	1175.40ft
Vertical Reference Pt	SDC 40 (KB)	SDC 40 (KB) to Ground Level at Slot (Slot 205H)	26.00ft
MD Reference Pt	SDC 40 (KB)	Section Origin	N 0.00, E 0.00 ft
Field Vertical Reference	Mean Sea Level	Section Azimuth	336.01°



# Actual Wellpath Report

Brian Teslovich BRK 205H AWB\_ awp 50' - 19561' Proj: 19586'  
Page 2 of 11



REFERENCE WELLPATH IDENTIFICATION			
Operator	SWN PRODUCTION COMPANY, LLC	Well	Brian Teslovich BRK 205H
Field	Brooke	API	047-009-00312
Facility	Brian Teslovich BRK Pad	Wellbore	Brian Teslovich BRK 205H AWB
Slot	Slot 205H		

WELLPATH DATA (245 stations) † = interpolated, ‡ = extrapolated station														
MD [ft]	Course Length [ft]	Inclination [°]	Azimuth [°]	TVD [ft]	Vert Sect [ft]	North [ft]	East [ft]	Grid East [US ft]	Grid North [US ft]	Latitude	Longitude	Closure Dist [ft]	Closure Dir [°]	DLS [°/100ft]
0.00†	0.00	0.000	88.840	0.00	0.00	0.00	0.00	1742778.07	14605834.06	40°12'59.9064"N	80°37'59.9847"W	0.00	0.000	0.00
26.00	26.00	0.000	88.840	26.00	0.00	0.00	0.00	1742778.07	14605834.06	40°12'59.9064"N	80°37'59.9847"W	0.00	0.000	0.00
50.00	24.00	0.350	88.840	50.00	-0.03	0.00	0.07	1742778.14	14605834.06	40°12'59.9064"N	80°37'59.9838"W	0.07	88.840	1.46
75.00	25.00	0.370	81.390	75.00	-0.08	0.02	0.23	1742778.30	14605834.08	40°12'59.9065"N	80°37'59.9818"W	0.23	86.231	0.20
100.00	25.00	0.370	80.100	100.00	-0.12	0.04	0.39	1742778.46	14605834.10	40°12'59.9068"N	80°37'59.9797"W	0.39	83.969	0.03
125.00	25.00	0.480	78.410	125.00	-0.16	0.08	0.57	1742778.64	14605834.14	40°12'59.9071"N	80°37'59.9774"W	0.58	82.417	0.44
150.00	25.00	0.480	77.030	150.00	-0.21	0.12	0.78	1742778.85	14605834.18	40°12'59.9076"N	80°37'59.9747"W	0.78	81.165	0.05
175.00	25.00	0.400	80.290	175.00	-0.25	0.16	0.96	1742779.03	14605834.22	40°12'59.9079"N	80°37'59.9723"W	0.98	80.644	0.34
200.00	25.00	0.280	76.190	200.00	-0.28	0.19	1.11	1742779.18	14605834.25	40°12'59.9082"N	80°37'59.9704"W	1.12	80.375	0.49
225.00	25.00	0.440	79.000	225.00	-0.31	0.22	1.26	1742779.33	14605834.28	40°12'59.9085"N	80°37'59.9685"W	1.28	80.073	0.64
250.00	25.00	0.580	80.720	249.99	-0.37	0.26	1.48	1742779.55	14605834.32	40°12'59.9089"N	80°37'59.9656"W	1.50	80.059	0.56
275.00	25.00	0.440	79.550	274.99	-0.42	0.30	1.70	1742779.77	14605834.36	40°12'59.9093"N	80°37'59.9628"W	1.73	80.079	0.56
300.00	25.00	0.470	77.960	299.99	-0.46	0.34	1.90	1742779.96	14605834.40	40°12'59.9096"N	80°37'59.9603"W	1.93	79.940	0.13
305.00	5.00	0.400	89.970	304.99	-0.47	0.34	1.93	1742780.00	14605834.40	40°12'59.9097"N	80°37'59.9598"W	1.96	80.008	2.29
325.00	20.00	0.470	110.680	324.99	-0.56	0.31	2.08	1742780.15	14605834.37	40°12'59.9094"N	80°37'59.9579"W	2.10	81.477	0.85
350.00	25.00	0.460	98.890	349.99	-0.69	0.26	2.27	1742780.34	14605834.32	40°12'59.9089"N	80°37'59.9554"W	2.29	83.481	0.38
375.00	25.00	0.600	87.860	374.99	-0.79	0.25	2.50	1742780.57	14605834.31	40°12'59.9088"N	80°37'59.9525"W	2.52	84.316	0.69
394.00	19.00	0.550	79.000	393.99	-0.85	0.27	2.69	1742780.76	14605834.33	40°12'59.9090"N	80°37'59.9500"W	2.71	84.267	0.54
400.00	6.00	0.520	88.900	399.99	-0.87	0.28	2.75	1742780.82	14605834.34	40°12'59.9090"N	80°37'59.9493"W	2.76	84.258	1.62
425.00	25.00	0.590	82.630	424.99	-0.95	0.30	2.99	1742781.06	14605834.36	40°12'59.9092"N	80°37'59.9462"W	3.00	84.363	0.37
450.00	25.00	0.580	93.630	449.99	-1.04	0.30	3.24	1742781.31	14605834.36	40°12'59.9093"N	80°37'59.9429"W	3.26	84.653	0.45
475.00	25.00	0.590	95.020	474.99	-1.16	0.28	3.50	1742781.57	14605834.34	40°12'59.9091"N	80°37'59.9396"W	3.51	85.353	0.07
485.00	10.00	0.590	98.760	484.98	-1.22	0.27	3.60	1742781.67	14605834.33	40°12'59.9089"N	80°37'59.9383"W	3.61	85.680	0.39
500.00	15.00	0.620	85.550	499.98	-1.28	0.27	3.76	1742781.83	14605834.33	40°12'59.9089"N	80°37'59.9363"W	3.77	85.943	0.95
525.00	25.00	0.500	83.990	524.98	-1.36	0.29	4.00	1742782.07	14605834.35	40°12'59.9091"N	80°37'59.9332"W	4.01	85.877	0.48
550.00	25.00	0.610	73.420	549.98	-1.41	0.34	4.24	1742782.31	14605834.40	40°12'59.9096"N	80°37'59.9301"W	4.25	85.441	0.60
575.00	25.00	0.660	51.250	574.98	-1.39	0.47	4.48	1742782.55	14605834.53	40°12'59.9108"N	80°37'59.9270"W	4.50	84.058	1.00
600.00	25.00	0.620	13.210	599.98	-1.25	0.69	4.62	1742782.69	14605834.75	40°12'59.9130"N	80°37'59.9252"W	4.67	81.533	1.68
625.00	25.00	0.610	14.990	624.98	-1.04	0.95	4.69	1742782.75	14605835.01	40°12'59.9156"N	80°37'59.9243"W	4.78	78.563	0.09
650.00	25.00	0.620	15.960	649.98	-0.83	1.21	4.76	1742782.83	14605835.27	40°12'59.9181"N	80°37'59.9234"W	4.91	75.768	0.06



# Actual Wellpath Report

Brian Teslovich BRK 205H AWB\_ awp 50' - 19561' Proj: 19586'  
Page 3 of 11



REFERENCE WELLPATH IDENTIFICATION			
Operator	SWN PRODUCTION COMPANY, LLC	Well	Brian Teslovich BRK 205H
Field	Brooke	API	047-009-00312
Facility	Brian Teslovich BRK Pad	Wellbore	Brian Teslovich BRK 205H AWB
Slot	Slot 205H		

WELLPATH DATA (245 stations)														
MD [ft]	Course Length [ft]	Inclination [°]	Azimuth [°]	TVD [ft]	Vert Sect [ft]	North [ft]	East [ft]	Grid East [US ft]	Grid North [US ft]	Latitude	Longitude	Closure Dist [ft]	Closure Dir [°]	DLS ["/100ft]
664.00	14.00	0.700	11.810	663.97	-0.70	1.36	4.80	1742782.86	14605835.42	40°12'59.9197"N	80°37'59.9229"W	4.99	74.133	0.67
675.00	11.00	0.710	2.010	674.97	-0.59	1.50	4.81	1742782.88	14605835.56	40°12'59.9210"N	80°37'59.9226"W	5.04	72.718	1.10
700.00	25.00	0.860	10.580	699.97	-0.29	1.84	4.85	1742782.92	14605835.90	40°12'59.9243"N	80°37'59.9221"W	5.19	69.270	0.76
725.00	25.00	1.080	2.770	724.97	0.07	2.26	4.90	1742782.97	14605836.32	40°12'59.9285"N	80°37'59.9215"W	5.39	65.267	1.02
750.00	25.00	1.150	2.480	749.96	0.50	2.74	4.92	1742782.99	14605836.80	40°12'59.9333"N	80°37'59.9212"W	5.63	60.867	0.28
754.00	4.00	1.170	358.200	753.96	0.58	2.82	4.92	1742782.99	14605836.88	40°12'59.9341"N	80°37'59.9212"W	5.67	60.156	2.22
869.00	115.00	0.880	11.030	868.94	2.39	4.86	5.05	1742783.12	14605838.92	40°12'59.9542"N	80°37'59.9194"W	7.01	46.093	0.32
960.00	91.00	0.840	67.510	959.94	2.94	5.80	5.80	1742783.87	14605839.86	40°12'59.9635"N	80°37'59.9096"W	8.21	44.990	0.90
1051.00	91.00	1.920	76.050	1050.91	2.66	6.43	7.90	1742785.97	14605840.48	40°12'59.9696"N	80°37'59.8826"W	10.18	50.864	1.20
1143.00	92.00	3.430	81.880	1142.80	1.64	7.19	12.12	1742790.18	14605841.24	40°12'59.9769"N	80°37'59.8282"W	14.09	59.329	1.67
1235.00	92.00	5.000	82.980	1234.55	-0.28	8.07	18.82	1742796.89	14605842.12	40°12'59.9853"N	80°37'59.7417"W	20.48	66.804	1.71
1328.00	93.00	6.970	81.260	1327.04	-2.95	9.42	28.42	1742806.48	14605843.48	40°12'59.9983"N	80°37'59.6179"W	29.94	71.666	2.13
1418.00	90.00	8.530	80.920	1416.22	-6.10	11.30	40.41	1742818.47	14605845.36	40°13'0.0164"N	80°37'59.4632"W	41.96	74.375	1.73
1509.00	91.00	9.980	80.950	1506.03	-9.87	13.61	54.86	1742832.91	14605847.66	40°13'0.0386"N	80°37'59.2768"W	56.53	76.070	1.59
1578.00	69.00	10.910	82.270	1573.89	-13.24	15.43	67.24	1742845.28	14605849.48	40°13'0.0561"N	80°37'59.1172"W	68.99	77.079	1.39
1667.00	89.00	11.900	80.900	1661.13	-17.96	18.01	84.65	1742862.68	14605852.06	40°13'0.0809"N	80°37'58.8927"W	86.54	77.988	1.15
1712.00	45.00	12.050	79.150	1705.15	-20.22	19.63	93.84	1742871.87	14605853.68	40°13'0.0965"N	80°37'58.7741"W	95.87	78.186	0.87
1803.00	91.00	13.690	80.770	1793.86	-25.12	23.14	113.80	1742891.83	14605857.20	40°13'0.1305"N	80°37'58.5166"W	116.13	78.504	1.85
1894.00	91.00	16.380	83.900	1881.74	-31.81	26.24	137.19	1742915.21	14605860.29	40°13'0.1600"N	80°37'58.2149"W	139.68	79.174	3.09
1984.00	90.00	18.620	85.040	1967.57	-40.39	28.83	164.13	1742942.14	14605862.88	40°13'0.1845"N	80°37'57.8675"W	166.64	80.039	2.52
2076.00	92.00	20.080	83.750	2054.37	-50.00	31.82	194.46	1742972.46	14605865.86	40°13'0.2128"N	80°37'57.4764"W	197.05	80.708	1.65
2167.00	91.00	21.330	79.820	2139.49	-58.71	36.44	226.28	1743004.27	14605870.49	40°13'0.2573"N	80°37'57.0659"W	229.20	80.851	2.05
2258.00	91.00	22.750	79.900	2223.84	-66.88	42.45	259.90	1743037.87	14605876.50	40°13'0.3153"N	80°37'56.6323"W	263.34	80.723	1.56
2351.00	93.00	24.390	81.460	2309.08	-76.32	48.46	296.59	1743074.55	14605882.50	40°13'0.3731"N	80°37'56.1590"W	300.53	80.721	1.89
2444.00	93.00	26.490	82.180	2393.06	-87.21	54.13	336.13	1743114.07	14605888.17	40°13'0.4276"N	80°37'55.6490"W	340.47	80.851	2.28
2535.00	91.00	27.600	84.690	2474.11	-99.61	58.85	377.23	1743155.16	14605892.88	40°13'0.4725"N	80°37'55.1189"W	381.80	81.134	1.75
2627.00	92.00	29.020	84.720	2555.10	-113.60	62.87	420.68	1743198.58	14605896.91	40°13'0.5105"N	80°37'54.5587"W	425.35	81.500	1.54
2719.00	92.00	30.520	85.040	2634.96	-128.37	66.94	466.17	1743244.06	14605900.98	40°13'0.5489"N	80°37'53.9720"W	470.95	81.828	1.64
2810.00	91.00	31.080	82.280	2713.13	-142.49	72.10	512.47	1743290.34	14605906.13	40°13'0.5979"N	80°37'53.3750"W	517.52	81.992	1.67
2901.00	91.00	31.600	81.190	2790.85	-155.31	78.91	559.31	1743337.16	14605912.93	40°13'0.6632"N	80°37'52.7708"W	564.85	81.970	0.85

**REFERENCE WELLPATH IDENTIFICATION**

Operator	<b>SWN PRODUCTION COMPANY, LLC</b>	Well	<b>Brian Teslovich BRK 205H</b>
Field	<b>Brooke</b>	API	<b>047-009-00312</b>
Facility	<b>Brian Teslovich BRK Pad</b>	Wellbore	<b>Brian Teslovich BRK 205H AWB</b>
Slot	<b>Slot 205H</b>		

**WELLPATH DATA (245 stations)**

MD [ft]	Course Length [ft]	Inclination [°]	Azimuth [°]	TVD [ft]	Vert Sect [ft]	North [ft]	East [ft]	Grid East [US ft]	Grid North [US ft]	Latitude	Longitude	Closure Dist [ft]	Closure Dir [°]	DLS ["/100ft]
2994.00	93.00	32.150	81.750	2869.83	-168.41	86.19	607.87	1743385.71	14605920.21	40°13'0.7332"N	80°37'52.1444"W	613.95	81.930	0.67
3084.00	90.00	31.520	82.480	2946.29	-181.57	92.70	654.90	1743432.71	14605926.73	40°13'0.7956"N	80°37'51.5379"W	661.43	81.943	0.82
3175.00	91.00	31.600	82.080	3023.83	-194.92	99.10	702.09	1743479.89	14605933.12	40°13'0.8569"N	80°37'50.9292"W	709.05	81.966	0.25
3266.00	91.00	32.110	82.090	3101.12	-208.21	105.71	749.66	1743527.44	14605939.73	40°13'0.9203"N	80°37'50.3157"W	757.08	81.973	0.56
3356.00	90.00	32.250	81.870	3177.30	-221.40	112.40	797.13	1743574.89	14605946.42	40°13'0.9845"N	80°37'49.7035"W	805.01	81.974	0.20
3447.00	91.00	33.000	81.930	3253.94	-234.83	119.31	845.70	1743623.44	14605953.33	40°13'1.0508"N	80°37'49.0770"W	854.07	81.969	0.82
3538.00	91.00	33.600	82.230	3330.00	-248.66	126.20	895.18	1743672.90	14605960.21	40°13'1.1167"N	80°37'48.4388"W	904.03	81.976	0.68
3628.00	90.00	33.090	78.590	3405.19	-260.97	134.43	943.94	1743721.65	14605968.43	40°13'1.1960"N	80°37'47.8097"W	953.47	81.895	2.29
3720.00	92.00	31.920	77.330	3482.77	-271.22	144.73	992.29	1743769.98	14605978.73	40°13'1.2959"N	80°37'47.1860"W	1002.79	81.702	1.47
3811.00	91.00	31.420	77.490	3560.22	-280.66	155.14	1038.92	1743816.59	14605989.14	40°13'1.3969"N	80°37'46.5843"W	1050.44	81.507	0.56
3901.00	90.00	31.160	79.230	3637.13	-290.65	164.58	1084.70	1743862.35	14605998.57	40°13'1.4882"N	80°37'45.9937"W	1097.11	81.373	1.04
3992.00	91.00	31.580	83.490	3714.84	-303.20	171.68	1131.51	1743909.14	14606005.67	40°13'1.5564"N	80°37'45.3900"W	1144.46	81.373	2.48
4084.00	92.00	33.010	85.320	3792.61	-318.72	176.45	1180.42	1743958.03	14606010.45	40°13'1.6016"N	80°37'44.7592"W	1193.54	81.498	1.88
4174.00	90.00	32.940	84.630	3868.11	-334.64	180.74	1229.22	1744006.81	14606014.73	40°13'1.6420"N	80°37'44.1300"W	1242.44	81.635	0.42
4266.00	92.00	32.860	82.990	3945.36	-349.92	186.13	1278.89	1744056.47	14606020.12	40°13'1.6932"N	80°37'43.4893"W	1292.37	81.719	0.97
4357.00	91.00	33.710	82.970	4021.43	-364.49	192.24	1328.46	1744106.01	14606026.22	40°13'1.7514"N	80°37'42.8500"W	1342.30	81.766	0.93
4447.00	90.00	34.200	82.440	4096.08	-378.93	198.62	1378.32	1744155.85	14606032.60	40°13'1.8125"N	80°37'42.2070"W	1392.56	81.800	0.64
4538.00	91.00	32.320	82.400	4172.17	-393.03	205.20	1427.79	1744205.30	14606039.18	40°13'1.8755"N	80°37'41.5689"W	1442.46	81.821	2.07
4630.00	92.00	31.240	84.430	4250.38	-407.51	210.77	1475.92	1744253.41	14606044.75	40°13'1.9285"N	80°37'40.9483"W	1490.89	81.873	1.65
4720.00	90.00	30.180	85.780	4327.76	-422.54	214.70	1521.71	1744299.18	14606048.68	40°13'1.9654"N	80°37'40.3578"W	1536.78	81.969	1.40
4809.00	89.00	30.590	86.080	4404.53	-437.88	217.90	1566.61	1744344.07	14606051.87	40°13'1.9951"N	80°37'39.7788"W	1581.69	82.082	0.49
4898.00	89.00	32.500	84.370	4480.38	-453.18	221.79	1613.00	1744390.44	14606055.76	40°13'2.0317"N	80°37'39.1806"W	1628.18	82.171	2.37
4988.00	90.00	34.140	81.540	4555.59	-467.56	227.88	1662.05	1744439.47	14606061.85	40°13'2.0898"N	80°37'38.5480"W	1677.60	82.193	2.51
5079.00	91.00	33.770	80.200	4631.07	-480.60	235.94	1712.23	1744489.63	14606069.91	40°13'2.1674"N	80°37'37.9007"W	1728.41	82.154	0.92
5170.00	91.00	33.760	79.810	4706.72	-492.83	244.72	1762.04	1744539.42	14606078.68	40°13'2.2521"N	80°37'37.2582"W	1778.95	82.093	0.24
5261.00	91.00	32.790	80.940	4782.80	-505.21	253.07	1811.26	1744588.63	14606087.03	40°13'2.3326"N	80°37'36.6232"W	1828.86	82.046	1.27
5352.00	91.00	30.990	82.790	4860.07	-518.32	259.89	1858.84	1744636.19	14606093.85	40°13'2.3980"N	80°37'36.0095"W	1876.92	82.041	2.25
5405.00	53.00	29.860	81.820	4905.77	-525.86	263.48	1885.44	1744662.78	14606097.44	40°13'2.4324"N	80°37'35.6665"W	1903.76	82.045	2.32
5455.00	50.00	29.980	81.370	4949.10	-532.56	267.13	1910.11	1744687.44	14606101.08	40°13'2.4674"N	80°37'35.3482"W	1928.70	82.039	0.51
5546.00	91.00	30.590	80.440	5027.68	-544.35	274.39	1955.42	1744732.73	14606108.34	40°13'2.5372"N	80°37'34.7638"W	1974.58	82.012	0.85

REFERENCE WELLPATH IDENTIFICATION			
Operator	SWN PRODUCTION COMPANY, LLC	Well	Brian Teslovich BRK 205H
Field	Brooke	API	047-009-00312
Facility	Brian Teslovich BRK Pad	Wellbore	Brian Teslovich BRK 205H AWB
Slot	Slot 205H		

WELLPATH DATA (245 stations)														
MD [ft]	Course Length [ft]	Inclination [°]	Azimuth [°]	TVD [ft]	Vert Sect [ft]	North [ft]	East [ft]	Grid East [US ft]	Grid North [US ft]	Latitude	Longitude	Closure Dist [ft]	Closure Dir [°]	DLS ["/100ft]
5637.00	91.00	30.770	71.160	5105.99	-552.21	285.75	2000.31	1744777.60	14606119.70	40°13'2.6477"N	80°37'34.1845"W	2020.62	81.870	5.20
5727.00	90.00	30.840	58.530	5183.38	-551.27	305.25	2041.82	1744819.09	14606139.19	40°13'2.8386"N	80°37'33.6484"W	2064.51	81.497	7.18
5818.00	91.00	32.140	46.530	5261.05	-540.15	334.11	2079.32	1744856.58	14606168.04	40°13'3.1223"N	80°37'33.1634"W	2105.99	80.872	7.02
5909.00	91.00	34.890	33.210	5337.02	-517.95	372.60	2111.19	1744888.44	14606206.51	40°13'3.5013"N	80°37'32.7505"W	2143.82	79.991	8.61
5999.00	90.00	37.700	19.390	5409.67	-483.94	420.18	2134.47	1744911.71	14606254.08	40°13'3.9705"N	80°37'32.4478"W	2175.44	78.863	9.59
6090.00	91.00	41.750	13.970	5479.67	-439.80	475.87	2151.03	1744928.27	14606309.75	40°13'4.5201"N	80°37'32.2313"W	2203.04	77.525	5.85
6182.00	92.00	45.400	6.690	5546.35	-387.43	538.19	2162.26	1744939.48	14606372.04	40°13'5.1355"N	80°37'32.0832"W	2228.23	76.023	6.74
6272.00	90.00	49.970	1.060	5606.95	-328.60	604.53	2166.63	1744943.86	14606438.35	40°13'5.7908"N	80°37'32.0232"W	2249.39	74.410	6.87
6364.00	92.00	54.550	355.970	5663.27	-261.40	677.19	2164.65	1744941.87	14606510.99	40°13'6.5090"N	80°37'32.0449"W	2268.10	72.628	6.63
6455.00	91.00	63.210	349.120	5710.30	-186.80	754.26	2154.35	1744931.58	14606588.03	40°13'7.2710"N	80°37'32.1734"W	2282.57	70.704	11.49
6545.00	90.00	70.610	344.920	5745.58	-105.60	834.84	2135.69	1744912.93	14606668.57	40°13'8.0681"N	80°37'32.4096"W	2293.06	68.649	9.27
6636.00	91.00	78.250	341.350	5770.00	-18.69	918.64	2110.23	1744887.48	14606752.34	40°13'8.8972"N	80°37'32.7332"W	2301.52	66.475	9.21
6727.00	91.00	84.820	340.700	5783.38	70.93	1003.71	2080.98	1744858.23	14606837.38	40°13'9.7391"N	80°37'33.1057"W	2310.39	64.251	7.25
6820.00	93.00	90.860	336.210	5786.89	163.71	1090.08	2046.87	1744824.14	14606923.72	40°13'10.5940"N	80°37'33.5407"W	2319.04	61.962	8.09
6910.00	90.00	90.860	336.640	5785.54	253.70	1172.56	2010.87	1744788.16	14607006.17	40°13'11.4106"N	80°37'34.0002"W	2327.77	59.753	0.48
7001.00	91.00	90.580	336.080	5784.40	344.69	1255.92	1974.39	1744751.69	14607089.49	40°13'12.2358"N	80°37'34.4660"W	2339.99	57.539	0.69
7092.00	91.00	90.650	336.060	5783.42	435.68	1339.09	1937.48	1744714.79	14607172.63	40°13'13.0592"N	80°37'34.9373"W	2355.20	55.350	0.08
7183.00	91.00	90.710	335.500	5782.34	526.67	1422.08	1900.15	1744677.48	14607255.58	40°13'13.8808"N	80°37'35.4140"W	2373.37	53.189	0.62
7275.00	92.00	91.230	335.890	5780.78	618.66	1505.91	1862.29	1744639.63	14607339.38	40°13'14.7108"N	80°37'35.8975"W	2394.97	51.040	0.71
7368.00	93.00	91.110	336.270	5778.88	711.64	1590.90	1824.59	1744601.95	14607424.34	40°13'15.5523"N	80°37'36.3789"W	2420.76	48.914	0.43
7458.00	90.00	90.950	335.960	5777.26	801.62	1673.18	1788.15	1744565.53	14607506.59	40°13'16.3669"N	80°37'36.8441"W	2448.88	46.902	0.39
7549.00	91.00	90.740	335.290	5775.92	892.61	1756.06	1750.60	1744527.99	14607589.44	40°13'17.1874"N	80°37'37.3237"W	2479.59	44.911	0.77
7641.00	92.00	90.710	336.150	5774.76	984.60	1839.92	1712.77	1744490.18	14607673.26	40°13'18.0177"N	80°37'37.8068"W	2513.74	42.950	0.94
7731.00	90.00	90.770	336.320	5773.60	1074.59	1922.28	1676.51	1744453.92	14607755.59	40°13'18.8330"N	80°37'38.2699"W	2550.65	41.093	0.20
7822.00	91.00	90.650	335.930	5772.47	1165.59	2005.48	1639.68	1744417.11	14607838.76	40°13'19.6568"N	80°37'38.7402"W	2590.47	39.269	0.45
7914.00	92.00	91.290	335.980	5770.91	1257.57	2089.49	1602.20	1744379.64	14607922.73	40°13'20.4885"N	80°37'39.2188"W	2633.06	37.481	0.70
8004.00	90.00	91.050	336.340	5769.07	1347.55	2171.79	1565.83	1744343.29	14608005.01	40°13'21.3033"N	80°37'39.6832"W	2677.41	35.791	0.48
8095.00	91.00	90.890	336.710	5767.53	1438.54	2255.25	1529.59	1744307.06	14608088.43	40°13'22.1295"N	80°37'40.1459"W	2725.03	34.146	0.44
8185.00	90.00	90.980	335.520	5766.06	1528.52	2337.53	1493.15	1744270.64	14608170.68	40°13'22.9441"N	80°37'40.6112"W	2773.72	32.569	1.33
8277.00	92.00	90.680	337.760	5764.73	1620.50	2421.97	1456.68	1744234.18	14608255.09	40°13'23.7801"N	80°37'41.0768"W	2826.28	31.024	2.46

REFERENCE WELLPATH IDENTIFICATION			
Operator	SWN PRODUCTION COMPANY, LLC	Well	Brian Teslovich BRK 205H
Field	Brooke	API	047-009-00312
Facility	Brian Teslovich BRK Pad	Wellbore	Brian Teslovich BRK 205H AWB
Slot	Slot 205H		

WELLPATH DATA (245 stations)														
MD [ft]	Course Length [ft]	Inclination [°]	Azimuth [°]	TVD [ft]	Vert Sect [ft]	North [ft]	East [ft]	Grid East [US ft]	Grid North [US ft]	Latitude	Longitude	Closure Dist [ft]	Closure Dir [°]	DLS [°/100ft]
8369.00	92.00	91.020	336.960	5763.37	1712.47	2506.87	1421.27	1744198.78	14608339.96	40°13'24.6205"N	80°37'41.5287"W	2881.74	29.551	0.94
8460.00	91.00	90.250	335.870	5762.36	1803.46	2590.27	1384.86	1744162.39	14608423.32	40°13'25.4461"N	80°37'41.9935"W	2937.23	28.131	1.47
8551.00	91.00	90.490	337.120	5761.77	1894.45	2673.71	1348.57	1744126.11	14608506.73	40°13'26.2722"N	80°37'42.4569"W	2994.56	26.766	1.40
8641.00	90.00	90.680	335.000	5760.85	1984.44	2755.96	1312.05	1744089.61	14608588.94	40°13'27.0865"N	80°37'42.9232"W	3052.34	25.458	2.36
8733.00	92.00	91.690	337.790	5758.95	2076.41	2840.23	1275.23	1744052.80	14608673.19	40°13'27.9208"N	80°37'43.3935"W	3113.38	24.179	3.22
8824.00	91.00	90.150	334.970	5757.49	2167.38	2923.59	1238.77	1744016.36	14608756.51	40°13'28.7460"N	80°37'43.8589"W	3175.21	22.963	3.53
8914.00	90.00	91.940	335.680	5755.85	2257.36	3005.35	1201.21	1743978.81	14608838.24	40°13'29.5555"N	80°37'44.3388"W	3236.52	21.786	2.14
9006.00	92.00	90.650	336.930	5753.77	2349.33	3089.57	1164.25	1743941.86	14608922.43	40°13'30.3893"N	80°37'44.8107"W	3301.66	20.648	1.95
9097.00	91.00	90.220	337.160	5753.08	2440.31	3173.36	1128.76	1743906.39	14609006.19	40°13'31.2188"N	80°37'45.2637"W	3368.13	19.580	0.54
9188.00	91.00	90.340	335.840	5752.63	2531.30	3256.81	1092.47	1743870.12	14609089.60	40°13'32.0449"N	80°37'45.7270"W	3435.16	18.544	1.46
9281.00	93.00	91.170	336.140	5751.41	2624.29	3341.76	1054.64	1743832.29	14609174.51	40°13'32.8859"N	80°37'46.2102"W	3504.23	17.515	0.95
9371.00	90.00	91.260	336.720	5749.50	2714.27	3424.23	1018.66	1743796.33	14609256.96	40°13'33.7023"N	80°37'46.6697"W	3572.54	16.567	0.65
9462.00	91.00	91.420	336.790	5747.37	2805.24	3507.82	982.75	1743760.44	14609340.51	40°13'34.5298"N	80°37'47.1281"W	3642.88	15.651	0.19
9554.00	92.00	91.880	336.310	5744.72	2897.20	3592.19	946.16	1743723.86	14609424.85	40°13'35.3650"N	80°37'47.5953"W	3714.70	14.756	0.72
9645.00	91.00	91.050	337.290	5742.39	2988.16	3675.80	910.32	1743688.03	14609508.43	40°13'36.1928"N	80°37'48.0528"W	3786.84	13.910	1.41
9736.00	91.00	90.580	337.460	5741.10	3079.12	3759.79	875.32	1743653.04	14609592.38	40°13'37.0242"N	80°37'48.4996"W	3860.33	13.106	0.55
9826.00	90.00	92.160	337.420	5738.95	3169.06	3842.87	840.80	1743618.54	14609675.44	40°13'37.8466"N	80°37'48.9401"W	3933.78	12.341	1.76
9917.00	91.00	90.060	336.800	5737.18	3260.02	3926.69	805.41	1743583.17	14609759.22	40°13'38.6763"N	80°37'49.3919"W	4008.44	11.591	2.41
10008.00	91.00	90.680	336.780	5736.60	3351.01	4010.32	769.55	1743547.32	14609842.82	40°13'39.5042"N	80°37'49.8497"W	4083.49	10.863	0.68
10099.00	91.00	90.580	335.790	5735.60	3442.01	4093.63	732.95	1743510.74	14609926.09	40°13'40.3290"N	80°37'50.3171"W	4158.73	10.151	1.09
10191.00	92.00	91.940	336.960	5733.57	3533.98	4177.90	696.09	1743473.89	14610010.33	40°13'41.1632"N	80°37'50.7877"W	4235.49	9.459	1.95
10282.00	91.00	90.620	335.930	5731.54	3624.95	4261.29	659.74	1743437.55	14610093.69	40°13'41.9888"N	80°37'51.2520"W	4312.06	8.801	1.84
10373.00	91.00	91.080	335.880	5730.19	3715.94	4344.35	622.59	1743400.42	14610176.72	40°13'42.8111"N	80°37'51.7265"W	4388.74	8.156	0.51
10464.00	91.00	91.380	335.680	5728.24	3806.92	4427.32	585.27	1743363.11	14610259.65	40°13'43.6326"N	80°37'52.2032"W	4465.84	7.531	0.40
10555.00	91.00	93.140	333.340	5724.65	3897.81	4509.39	546.14	1743324.00	14610341.69	40°13'44.4452"N	80°37'52.7032"W	4542.34	6.906	3.22
10644.00	89.00	90.490	335.870	5721.83	3986.72	4589.74	508.00	1743285.87	14610422.01	40°13'45.2407"N	80°37'53.1907"W	4617.77	6.316	4.12
10735.00	91.00	90.000	335.650	5721.44	4077.72	4672.71	470.64	1743248.53	14610504.95	40°13'46.0622"N	80°37'53.6679"W	4696.36	5.751	0.59
10825.00	90.00	89.970	335.950	5721.46	4167.72	4754.80	433.75	1743211.65	14610587.01	40°13'46.8749"N	80°37'54.1392"W	4774.55	5.212	0.33
10916.00	91.00	90.650	335.120	5720.97	4258.71	4837.63	396.06	1743173.98	14610669.80	40°13'47.6950"N	80°37'54.6206"W	4853.82	4.680	1.18
11006.00	90.00	90.310	336.050	5720.22	4348.70	4919.58	358.86	1743136.79	14610751.72	40°13'48.5063"N	80°37'55.0958"W	4932.65	4.172	1.10

REFERENCE WELLPATH IDENTIFICATION			
Operator	SWN PRODUCTION COMPANY, LLC	Well	Brian Teslovich BRK 205H
Field	Brooke	API	047-009-00312
Facility	Brian Teslovich BRK Pad	Wellbore	Brian Teslovich BRK 205H AWB
Slot	Slot 205H		

WELLPATH DATA (245 stations)														
MD [ft]	Course Length [ft]	Inclination [°]	Azimuth [°]	TVD [ft]	Vert Sect [ft]	North [ft]	East [ft]	Grid East [US ft]	Grid North [US ft]	Latitude	Longitude	Closure Dist [ft]	Closure Dir [°]	DLS ["/100ft]
11098.00	92.00	90.340	335.790	5719.70	4440.70	5003.57	321.33	1743099.27	14610835.68	40°13'49.3378"N	80°37'55.5753"W	5013.88	3.674	0.28
11191.00	93.00	90.490	334.150	5719.02	4533.68	5087.83	281.98	1743059.94	14610919.91	40°13'50.1721"N	80°37'56.0781"W	5095.64	3.172	1.77
11281.00	90.00	92.000	335.710	5717.07	4623.64	5169.33	243.86	1743021.83	14611001.37	40°13'50.9790"N	80°37'56.5653"W	5175.08	2.701	2.41
11374.00	93.00	90.030	332.390	5715.42	4716.55	5252.92	203.17	1742981.16	14611084.93	40°13'51.8067"N	80°37'57.0853"W	5256.85	2.215	4.15
11465.00	91.00	91.600	332.780	5714.12	4807.38	5333.69	161.28	1742939.29	14611165.67	40°13'52.6066"N	80°37'57.6211"W	5336.13	1.732	1.78
11556.00	91.00	91.660	332.610	5711.54	4898.19	5414.52	119.55	1742897.58	14611246.47	40°13'53.4070"N	80°37'58.1548"W	5415.84	1.265	0.20
11648.00	92.00	90.770	330.920	5709.58	4989.91	5495.55	76.04	1742854.08	14611327.47	40°13'54.2095"N	80°37'58.7115"W	5496.08	0.793	2.08
11740.00	92.00	90.950	329.090	5708.20	5081.39	5575.22	30.05	1742808.11	14611407.10	40°13'54.9987"N	80°37'59.3002"W	5575.30	0.309	2.00
11830.00	90.00	90.860	328.800	5706.78	5170.70	5652.31	-16.37	1742761.71	14611484.16	40°13'55.7623"N	80°37'59.8946"W	5652.33	359.834	0.34
11921.00	91.00	90.680	330.220	5705.56	5261.10	5730.72	-62.53	1742715.56	14611562.54	40°13'56.5390"N	80°38'0.4857"W	5731.06	359.375	1.57
12013.00	92.00	90.580	332.380	5704.55	5352.78	5811.40	-106.71	1742671.40	14611643.20	40°13'57.3382"N	80°38'1.0509"W	5812.38	358.948	2.35
12104.00	91.00	90.280	333.260	5703.86	5443.64	5892.35	-148.28	1742629.85	14611724.11	40°13'58.1398"N	80°38'1.5825"W	5894.22	358.559	1.02
12195.00	91.00	90.490	334.550	5703.25	5534.57	5974.07	-188.30	1742589.84	14611805.80	40°13'58.9490"N	80°38'2.0943"W	5977.04	358.195	1.44
12285.00	90.00	90.770	338.110	5702.26	5624.55	6056.48	-224.43	1742553.73	14611888.18	40°13'59.7648"N	80°38'2.5556"W	6060.64	357.878	3.97
12377.00	92.00	90.550	340.060	5701.20	5716.41	6142.41	-257.26	1742520.91	14611974.08	40°14'0.6153"N	80°38'2.9745"W	6147.80	357.602	2.13
12468.00	91.00	90.520	341.820	5700.35	5807.06	6228.41	-286.98	1742491.20	14612060.05	40°14'1.4664"N	80°38'3.3530"W	6235.02	357.362	1.93
12559.00	91.00	90.650	343.160	5699.42	5897.47	6315.19	-314.36	1742463.84	14612146.79	40°14'2.3250"N	80°38'3.7014"W	6323.01	357.150	1.48
12650.00	91.00	90.830	342.760	5698.25	5987.80	6402.19	-341.02	1742437.18	14612233.75	40°14'3.1858"N	80°38'4.0406"W	6411.27	356.951	0.48
12741.00	91.00	90.800	342.590	5696.95	6078.17	6489.05	-368.12	1742410.10	14612320.58	40°14'4.0453"N	80°38'4.3853"W	6499.49	356.753	0.19
12832.00	91.00	90.950	341.710	5695.56	6168.64	6575.66	-396.01	1742382.22	14612407.16	40°14'4.9022"N	80°38'4.7404"W	6587.57	356.554	0.98
12924.00	92.00	90.980	339.470	5694.02	6260.33	6662.41	-426.57	1742351.66	14612493.88	40°14'5.7608"N	80°38'5.1299"W	6676.06	356.337	2.43
13014.00	90.00	91.050	337.410	5692.42	6350.23	6746.10	-459.64	1742318.61	14612577.53	40°14'6.5891"N	80°38'5.5518"W	6761.74	356.102	2.29
13106.00	92.00	91.230	336.260	5690.59	6442.20	6830.66	-495.82	1742282.44	14612662.06	40°14'7.4262"N	80°38'6.0138"W	6848.64	355.848	1.26
13196.00	90.00	90.710	335.930	5689.07	6532.18	6912.93	-532.29	1742245.99	14612744.29	40°14'8.2406"N	80°38'6.4796"W	6933.39	355.597	0.68
13287.00	91.00	90.580	335.960	5688.04	6623.18	6996.02	-569.38	1742208.91	14612827.35	40°14'9.0632"N	80°38'6.9535"W	7019.15	355.347	0.15
13378.00	91.00	90.490	335.980	5687.19	6714.17	7079.13	-606.43	1742171.87	14612910.43	40°14'9.8860"N	80°38'7.4269"W	7105.06	355.104	0.10
13469.00	91.00	90.620	335.800	5686.31	6805.17	7162.19	-643.60	1742134.72	14612993.46	40°14'10.7083"N	80°38'7.9018"W	7191.05	354.865	0.24
13561.00	92.00	90.800	335.600	5685.17	6897.16	7246.03	-681.46	1742096.88	14613077.27	40°14'11.5384"N	80°38'8.3854"W	7278.01	354.627	0.29
13652.00	91.00	90.580	335.220	5684.08	6988.15	7328.77	-719.32	1742059.03	14613159.98	40°14'12.3575"N	80°38'8.8693"W	7363.99	354.394	0.48
13743.00	91.00	90.770	335.840	5683.00	7079.14	7411.59	-757.02	1742021.35	14613242.76	40°14'13.1775"N	80°38'9.3509"W	7450.15	354.168	0.71



**REFERENCE WELLPATH IDENTIFICATION**

Operator	<b>SWN PRODUCTION COMPANY, LLC</b>	Well	<b>Brian Teslovich BRK 205H</b>
Field	<b>Brooke</b>	API	<b>047-009-00312</b>
Facility	<b>Brian Teslovich BRK Pad</b>	Wellbore	<b>Brian Teslovich BRK 205H AWB</b>
Slot	<b>Slot 205H</b>		

**WELLPATH DATA (245 stations)**

MD [ft]	Course Length [ft]	Inclination [°]	Azimuth [°]	TVD [ft]	Vert Sect [ft]	North [ft]	East [ft]	Grid East [US ft]	Grid North [US ft]	Latitude	Longitude	Closure Dist [ft]	Closure Dir [°]	DLS ["/100ft]
13835.00	92.00	90.890	335.890	5681.67	7171.13	7495.54	-794.63	1741983.75	14613326.68	40°14'14.0086"N	80°38'9.8314"W	7537.55	353.948	0.14
13926.00	91.00	90.920	335.880	5680.23	7262.12	7578.59	-831.80	1741946.59	14613409.69	40°14'14.8307"N	80°38'10.3064"W	7624.10	353.736	0.03
14016.00	90.00	90.770	335.720	5678.91	7352.11	7660.67	-868.69	1741909.72	14613491.74	40°14'15.6433"N	80°38'10.7777"W	7709.77	353.530	0.24
14107.00	91.00	90.590	335.990	5677.83	7443.10	7743.70	-905.91	1741872.51	14613574.74	40°14'16.4654"N	80°38'11.2533"W	7796.51	353.327	0.36
14198.00	91.00	90.740	335.810	5676.77	7534.09	7826.77	-943.07	1741835.37	14613657.77	40°14'17.2877"N	80°38'11.7280"W	7883.38	353.129	0.26
14289.00	91.00	90.430	335.430	5675.84	7625.09	7909.65	-980.63	1741797.82	14613740.62	40°14'18.1082"N	80°38'12.2079"W	7970.20	352.933	0.54
14381.00	92.00	90.180	335.290	5675.35	7717.08	7993.27	-1018.99	1741759.48	14613824.21	40°14'18.9361"N	80°38'12.6981"W	8057.96	352.735	0.31
14472.00	91.00	90.400	334.990	5674.89	7808.07	8075.84	-1057.24	1741721.24	14613906.75	40°14'19.7536"N	80°38'13.1870"W	8144.75	352.542	0.41
14562.00	90.00	90.920	335.590	5673.85	7898.05	8157.59	-1094.86	1741683.63	14613988.47	40°14'20.5629"N	80°38'13.6678"W	8230.73	352.356	0.88
14652.00	90.00	90.890	335.990	5672.43	7988.04	8239.66	-1131.76	1741646.75	14614070.51	40°14'21.3755"N	80°38'14.1393"W	8317.03	352.179	0.45
14744.00	92.00	90.490	335.460	5671.32	8080.03	8323.52	-1169.58	1741608.94	14614154.34	40°14'22.2057"N	80°38'14.6226"W	8405.29	352.001	0.72
14835.00	91.00	90.520	335.410	5670.50	8171.02	8406.28	-1207.41	1741571.13	14614237.06	40°14'23.0250"N	80°38'15.1060"W	8492.55	351.826	0.06
14925.00	90.00	90.280	335.570	5669.89	8261.02	8488.17	-1244.75	1741533.81	14614318.92	40°14'23.8358"N	80°38'15.5831"W	8578.95	351.657	0.32
15017.00	92.00	90.250	335.830	5669.47	8353.02	8572.02	-1282.61	1741495.96	14614402.74	40°14'24.6659"N	80°38'16.0669"W	8667.44	351.490	0.28
15108.00	91.00	90.220	336.010	5669.10	8444.02	8655.10	-1319.74	1741458.85	14614485.78	40°14'25.4883"N	80°38'16.5413"W	8755.14	351.330	0.20
15198.00	90.00	90.060	333.560	5668.88	8533.99	8736.52	-1358.08	1741420.52	14614567.17	40°14'26.2944"N	80°38'17.0314"W	8841.44	351.164	2.73
15290.00	92.00	91.260	335.720	5667.82	8625.95	8819.64	-1397.47	1741381.14	14614650.26	40°14'27.1174"N	80°38'17.5351"W	8929.67	350.996	2.69
15380.00	90.00	90.220	336.890	5666.65	8715.94	8902.04	-1433.64	1741344.99	14614732.63	40°14'27.9332"N	80°38'17.9971"W	9016.74	350.851	1.74
15471.00	91.00	90.120	337.210	5666.38	8806.92	8985.84	-1469.12	1741309.52	14614816.39	40°14'28.7627"N	80°38'18.4502"W	9105.14	350.715	0.37
15561.00	90.00	90.220	337.140	5666.12	8896.90	9068.79	-1504.03	1741274.62	14614899.31	40°14'29.5838"N	80°38'18.8960"W	9192.66	350.583	0.14
15652.00	91.00	89.600	337.170	5666.26	8987.88	9152.65	-1539.36	1741239.31	14614983.14	40°14'30.4139"N	80°38'19.3472"W	9281.20	350.453	0.68
15743.00	91.00	90.370	337.160	5666.28	9078.86	9236.52	-1574.68	1741204.01	14615066.98	40°14'31.2441"N	80°38'19.7982"W	9369.79	350.325	0.85
15834.00	91.00	90.000	336.930	5665.99	9169.85	9320.31	-1610.17	1741168.53	14615150.74	40°14'32.0736"N	80°38'20.2515"W	9458.38	350.198	0.48
15925.00	91.00	90.400	337.260	5665.67	9260.83	9404.14	-1645.59	1741133.13	14615234.53	40°14'32.9033"N	80°38'20.7038"W	9547.03	350.075	0.57
16018.00	93.00	90.490	335.950	5664.95	9353.82	9489.49	-1682.51	1741096.21	14615319.85	40°14'33.7482"N	80°38'21.1755"W	9637.49	349.946	1.41
16110.00	92.00	90.710	335.850	5663.99	9445.82	9573.46	-1720.08	1741058.66	14615403.79	40°14'34.5796"N	80°38'21.6555"W	9726.76	349.814	0.26
16201.00	91.00	90.280	336.270	5663.20	9536.81	9656.63	-1757.00	1741021.75	14615486.92	40°14'35.4029"N	80°38'22.1272"W	9815.17	349.688	0.66
16291.00	90.00	90.280	336.400	5662.76	9626.81	9739.06	-1793.12	1740985.64	14615569.32	40°14'36.2189"N	80°38'22.5888"W	9902.76	349.568	0.14
16383.00	92.00	90.180	336.200	5662.39	9718.81	9823.30	-1830.10	1740948.68	14615653.53	40°14'37.0529"N	80°38'23.0612"W	9992.32	349.447	0.24
16474.00	91.00	90.280	335.960	5662.02	9809.81	9906.49	-1867.00	1740911.80	14615736.68	40°14'37.8763"N	80°38'23.5327"W	10080.88	349.327	0.29



# Actual Wellpath Report

Brian Teslovich BRK 205H AWB\_ awp 50' - 19561' Proj: 19586'  
Page 9 of 11



REFERENCE WELLPATH IDENTIFICATION			
Operator	SWN PRODUCTION COMPANY, LLC	Well	Brian Teslovich BRK 205H
Field	Brooke	API	047-009-00312
Facility	Brian Teslovich BRK Pad	Wellbore	Brian Teslovich BRK 205H AWB
Slot	Slot 205H		

WELLPATH DATA (245 stations)														
MD [ft]	Course Length [ft]	Inclination [°]	Azimuth [°]	TVD [ft]	Vert Sect [ft]	North [ft]	East [ft]	Grid East [US ft]	Grid North [US ft]	Latitude	Longitude	Closure Dist [ft]	Closure Dir [°]	DLS ["/100ft]
16564.00	90.00	90.310	335.400	5661.56	9899.80	9988.50	-1904.06	1740874.75	14615818.66	40°14'38.6883"N	80°38'24.0063"W	10168.36	349.207	0.62
16655.00	91.00	90.150	335.820	5661.20	9990.80	10071.37	-1941.64	1740837.18	14615901.51	40°14'39.5087"N	80°38'24.4866"W	10256.83	349.088	0.49
16746.00	91.00	90.400	336.180	5660.76	10081.80	10154.51	-1978.65	1740800.19	14615984.61	40°14'40.3317"N	80°38'24.9595"W	10345.49	348.974	0.48
16836.00	90.00	91.320	335.850	5659.41	10171.79	10236.72	-2015.23	1740763.62	14616066.79	40°14'41.1457"N	80°38'25.4270"W	10433.20	348.863	1.09
16927.00	91.00	90.650	335.510	5657.84	10262.77	10319.64	-2052.71	1740726.16	14616149.67	40°14'41.9665"N	80°38'25.9058"W	10521.81	348.750	0.83
17018.00	91.00	90.650	336.360	5656.81	10353.77	10402.72	-2089.81	1740689.07	14616232.72	40°14'42.7890"N	80°38'26.3800"W	10610.56	348.641	0.93
17108.00	90.00	90.770	336.370	5655.70	10443.76	10485.17	-2125.89	1740653.01	14616315.14	40°14'43.6051"N	80°38'26.8409"W	10698.51	348.539	0.13
17200.00	92.00	90.150	335.620	5654.96	10535.75	10569.20	-2163.32	1740615.60	14616399.14	40°14'44.4371"N	80°38'27.3192"W	10788.33	348.432	1.06
17292.00	92.00	90.400	335.980	5654.52	10627.75	10653.12	-2201.03	1740577.90	14616483.02	40°14'45.2678"N	80°38'27.8011"W	10878.12	348.326	0.48
17382.00	90.00	90.370	336.390	5653.91	10717.75	10735.45	-2237.37	1740541.58	14616565.33	40°14'46.0829"N	80°38'28.2655"W	10966.12	348.228	0.46
17474.00	92.00	90.580	336.610	5653.15	10809.74	10819.82	-2274.05	1740504.91	14616649.66	40°14'46.9181"N	80°38'28.7342"W	11056.21	348.131	0.33
17565.00	91.00	90.460	336.000	5652.32	10900.74	10903.14	-2310.62	1740468.35	14616732.95	40°14'47.7429"N	80°38'29.2014"W	11145.29	348.035	0.68
17655.00	90.00	90.490	336.550	5651.58	10990.73	10985.54	-2346.83	1740432.16	14616815.31	40°14'48.5585"N	80°38'29.6641"W	11233.41	347.941	0.61
17747.00	92.00	90.680	336.130	5650.64	11082.73	11069.80	-2383.75	1740395.25	14616899.54	40°14'49.3927"N	80°38'30.1358"W	11323.54	347.848	0.50
17839.00	92.00	90.400	336.130	5649.77	11174.72	11153.92	-2420.97	1740358.04	14616983.63	40°14'50.2255"N	80°38'30.6115"W	11413.64	347.754	0.30
17926.00	87.00	90.310	335.910	5649.23	11261.72	11233.41	-2456.33	1740322.70	14617063.09	40°14'51.0124"N	80°38'31.0633"W	11498.83	347.666	0.27
18017.00	91.00	90.460	336.180	5648.62	11352.72	11316.57	-2493.28	1740285.76	14617146.22	40°14'51.8356"N	80°38'31.5355"W	11587.98	347.575	0.34
18107.00	90.00	90.580	336.490	5647.80	11442.71	11399.00	-2529.40	1740249.65	14617228.62	40°14'52.6516"N	80°38'31.9970"W	11676.26	347.489	0.37
18198.00	91.00	91.110	336.020	5646.46	11533.70	11482.29	-2566.04	1740213.03	14617311.87	40°14'53.4761"N	80°38'32.4652"W	11765.52	347.403	0.78
18288.00	90.00	90.220	335.860	5645.42	11623.69	11564.46	-2602.73	1740176.35	14617394.01	40°14'54.2896"N	80°38'32.9341"W	11853.73	347.316	1.00
18379.00	91.00	90.620	335.800	5644.75	11714.69	11647.48	-2639.99	1740139.11	14617477.00	40°14'55.1115"N	80°38'33.4103"W	11942.92	347.229	0.44
18470.00	91.00	90.740	335.750	5643.67	11805.68	11730.46	-2677.33	1740101.79	14617559.95	40°14'55.9330"N	80°38'33.8875"W	12032.12	347.143	0.14
18560.00	90.00	90.740	336.180	5642.51	11895.68	11812.65	-2713.98	1740065.15	14617642.11	40°14'56.7466"N	80°38'34.3559"W	12120.41	347.061	0.48
18651.00	91.00	90.220	336.150	5641.74	11986.67	11895.89	-2750.75	1740028.39	14617725.31	40°14'57.5706"N	80°38'34.8258"W	12209.78	346.980	0.57
18742.00	91.00	90.710	335.720	5641.01	12077.67	11978.98	-2787.86	1739991.30	14617808.36	40°14'58.3931"N	80°38'35.3000"W	12299.11	346.899	0.72
18832.00	90.00	90.280	335.770	5640.23	12167.66	12061.03	-2824.83	1739954.34	14617890.38	40°14'59.2054"N	80°38'35.7726"W	12387.42	346.818	0.48
18923.00	91.00	90.490	336.100	5639.62	12258.66	12144.12	-2861.93	1739917.25	14617973.44	40°15'0.0280"N	80°38'36.2468"W	12476.79	346.739	0.43
19015.00	92.00	90.620	336.240	5638.73	12350.66	12228.27	-2899.10	1739880.10	14618057.56	40°15'0.8610"N	80°38'36.7218"W	12567.23	346.662	0.21
19106.00	91.00	90.580	335.980	5637.77	12441.65	12311.47	-2935.95	1739843.26	14618140.73	40°15'1.6846"N	80°38'37.1928"W	12656.70	346.587	0.29
19197.00	91.00	90.980	336.370	5636.53	12532.64	12394.71	-2972.71	1739806.52	14618223.93	40°15'2.5086"N	80°38'37.6625"W	12746.20	346.513	0.61



# Actual Wellpath Report

Brian Teslovich BRK 205H AWB\_awp 50' - 19561' Proj: 19586'  
Page 10 of 11



REFERENCE WELLPATH IDENTIFICATION			
Operator	SWN PRODUCTION COMPANY, LLC	Well	Brian Teslovich BRK 205H
Field	Brooke	API	047-009-00312
Facility	Brian Teslovich BRK Pad	Wellbore	Brian Teslovich BRK 205H AWB
Slot	Slot 205H		

WELLPATH DATA (245 stations) † = interpolated, ‡ = extrapolated station														
MD [ft]	Course Length [ft]	Inclination [°]	Azimuth [°]	TVD [ft]	Vert Sect [ft]	North [ft]	East [ft]	Grid East [US ft]	Grid North [US ft]	Latitude	Longitude	Closure Dist [ft]	Closure Dir [°]	DLS [°/100ft]
19287.00	90.00	91.200	336.140	5634.82	12622.63	12477.07	-3008.94	1739770.30	14618306.27	40°15'3.3240"N	80°38'38.1255"W	12834.76	346.442	0.35
19378.00	91.00	90.520	336.060	5633.46	12713.61	12560.26	-3045.81	1739733.45	14618389.42	40°15'4.1475"N	80°38'38.5966"W	12924.28	346.369	0.75
19469.00	91.00	90.520	336.180	5632.63	12804.61	12643.47	-3082.64	1739696.63	14618472.59	40°15'4.9712"N	80°38'39.0674"W	13013.84	346.298	0.13
19561.00	92.00	90.430	336.040	5631.87	12896.61	12727.58	-3119.90	1739659.39	14618556.68	40°15'5.8039"N	80°38'39.5436"W	13104.39	346.227	0.18
19586.00‡	25.00	90.430	336.040	5631.68	12921.61	12750.43	-3130.05	1739649.24	14618579.51	40°15'6.0300"N	80°38'39.6733"W	13129.00	346.207	0.00

HOLE & CASING SECTIONS									
- Ref Wellbore: Brian Teslovich BRK 205H AWB    Ref Wellpath: Brian Teslovich BRK 205H AWB_awp 50' - 19561' Proj: 19586'									
String/Diameter	Start MD [ft]	End MD [ft]	Interval [ft]	Start TVD [ft]	End TVD [ft]	Start N/S [ft]	Start E/W [ft]	End N/S [ft]	End E/W [ft]
13.375in Casing	26.00	754.00	728.00	26.00	753.96	0.00	0.00	2.82	4.92
9.625in Casing	26.00	5352.00	5326.00	26.00	4860.07	0.00	0.00	259.89	1858.84
5.5in Casing	26.00	19000.00	18974.00	26.00	5638.89	0.00	0.00	12214.54	-2893.06

TARGETS								
Name	TVD [ft]	North [ft]	East [ft]	Grid East [US ft]	Grid North [US ft]	Latitude	Longitude	Shape
Brian Teslovich BRK 205H BHL Rev 2	5639.00	12752.71	-3133.53	1739645.76	14618581.79	40°15'6.0527"N	80°38'39.7180"W	point
Brian Teslovich BRK 205H LP Rev 2	5786.00	1082.32	2059.89	1744837.16	14606915.96	40°13'10.5168"N	80°37'33.3732"W	point



**Actual Wellpath Report**  
 Brian Teslovich BRK 205H AWB\_ awp 50' - 19561' Proj: 19586'  
 Page 11 of 11



REFERENCE WELLPATH IDENTIFICATION			
Operator	SWN PRODUCTION COMPANY, LLC	Well	Brian Teslovich BRK 205H
Field	Brooke	API	047-009-00312
Facility	Brian Teslovich BRK Pad	Wellbore	Brian Teslovich BRK 205H AWB
Slot	Slot 205H		

WELLPATH COMPOSITION - Ref Wellbore: Brian Teslovich BRK 205H AWB		Ref Wellpath: Brian Teslovich BRK 205H AWB_ awp 50' - 19561' Proj: 19586'			
Start MD [ft]	End MD [ft]	Positional Uncertainty Model	Log Name/Comment	Wellbore	Survey Date
26.00	754.00	Gyrodata 2015 - CT+WIR+DPIPE	1 Gyrodata 50' - 754'	Brian Teslovich BRK 205H AWB	10/20/2021
754.00	5352.00	OWSG MWD rev2 - Standard	2 Tally MWD 869' - 5352'	Brian Teslovich BRK 205H AWB	10/20/2021
5352.00	19586.00	BH AutoTrak Curve/eXpress (2019) (HRGM, Short spacing)	3 BH MWD 5405' - 19561'	Brian Teslovich BRK 205H AWB	10/23/2021