

SWN PRODUCTION COMPANY, LLC

Location: Brooke County, WV
 Field: Brooke
 Facility: John Good Jr BRK Pad

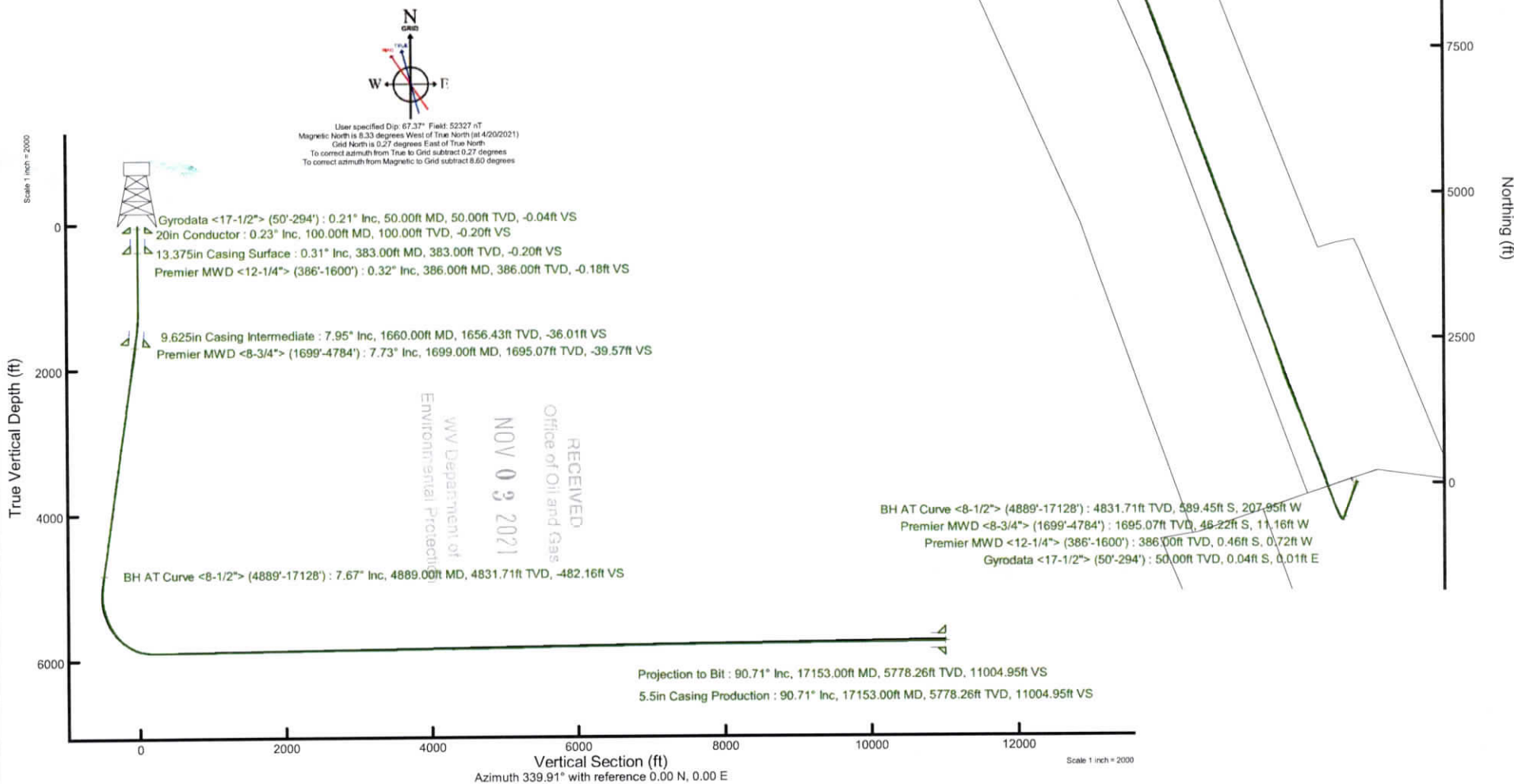
Slot: Slot #1H
 Well: John Good Jr BRK 1H
 Wellbore: John Good Jr BRK 1H PWB

Plot reference wellpath is John Good Jr BRK 1H PWB Rev-A.0	Grid System: NAD83 / UTM Zone 17 North, US feet
True vertical depths are referenced to SDC 40 (KB)	North Reference: Grid north
Reference wellpath measured depths are referenced to SDC 40 (KB)	Scale: True distance
SDC 40 (KB) to Mean Sea Level: 1179.4 feet	Coordinates are in feet referenced to Slot
Mean Sea Level to Ground level (At Slot: Slot #1H): -1153.4 feet	Depths are in feet
Offset wellpath MDs are referenced to each path's default MD datum	Created by: a1erjen on 2021-05-06; Database: WA_MPL_EASTERLUS_Dbn

API: 47-009-00320-0000
 BH Job #: 110819274
 Rig: SDC 40
 Duration: 04/27/2021 - 04/29/2021



Location Information					
Facility Name	Grid East (US ft)	Grid North (US ft)	Latitude	Longitude	
John Good Jr BRK Pad	1757463.232	14608504.851	40°13'25.6660"N	80°34'50.4520"W	
Slot	Local N (ft)	Local E (ft)	Grid East (US ft)	Grid North (US ft)	
Slot #1H	-26.33	70.23	1757533.440	14608478.530	
				Latitude	Longitude
				40°13'25.4025"N	80°34'49.5482"W
SDC 40 (KB) to Ground level (At Slot: Slot #1H)				26ft	
Mean Sea Level to Ground level (At Slot: Slot #1H)				-1153.4ft	
SDC 40 (KB) to Mean Sea Level				1179.4ft	





Actual Wellpath Report

John Good Jr BRK 1H AWP Proj: 17153'
Page 1 of 10



REFERENCE WELLPATH IDENTIFICATION

Operator	SWN PRODUCTION COMPANY, LLC	Well	John Good Jr BRK 1H
Field	Brooke	API/Legal	
Facility	John Good Jr BRK Pad	Wellbore	John Good Jr BRK 1H AWB
Slot	Slot #1H		

REPORT SETUP INFORMATION

Projection System	NAD83 / UTM Zone 17 North, US feet	Software System	WellArchitect® 6.0
North Reference	Grid	User	Atenjen
Scale	0.999616	Report Generated	5/6/2021 at 8:47:46 AM
Convergence at slot	0.27° East	Database	WA_MPL_EASTERNUS_Defn

WELLPATH LOCATION

	Local coordinates		Grid coordinates		Geographic coordinates	
	North[ft]	East[ft]	Easting[US ft]	Northing[US ft]	Latitude	Longitude
Slot Location	-26.33	70.23	1757533.44	14608478.53	40°13'25.4025"N	80°34'49.5482"W
Facility Reference Pt			1757463.23	14608504.85	40°13'25.6660"N	80°34'50.4520"W
Field Reference Pt			0.00	0.00	0°00'0.0000"	85°29'19.4780"W

WELLPATH DATUM

Calculation method	Minimum curvature	SDC 40 (KB) to Facility Vertical Datum	1179.40ft
Horizontal Reference Pt	Slot	SDC 40 (KB) to Mean Sea Level	1179.40ft
Vertical Reference Pt	SDC 40 (KB)	SDC 40 (KB) to Ground Level at Slot (Slot #1H)	26.00ft
MD Reference Pt	SDC 40 (KB)	Section Origin	N 0.00, E 0.00 ft
Field Vertical Reference	Mean Sea Level	Section Azimuth	339.91°

RECEIVED
 Office of Oil and Gas
 NOV 09 2021
 WV Department of
 Environmental Protection



Actual Wellpath Report

John Good Jr BRK 1H AWP Proj: 17153'
Page 2 of 10



REFERENCE WELLPATH IDENTIFICATION			
Operator	SWN PRODUCTION COMPANY, LLC	Well	John Good Jr BRK 1H
Field	Brooke	API/Legal	
Facility	John Good Jr BRK Pad	Wellbore	John Good Jr BRK 1H AWB
Slot	Slot #1H		

WELLPATH DATA (200 stations) † = interpolated, ‡ = extrapolated station															
MD [ft]	Inclination [°]	Azimuth [°]	TVD [ft]	Vert Sect [ft]	North [ft]	East [ft]	Grid East [US ft]	Grid North [US ft]	Latitude	Longitude	Closure Dist [ft]	Closure Dir [°]	DLS [°/100ft]	Build Rate [°/100ft]	Turn Rate [°/100ft]
0.00†	0.000	162.700	0.00	0.00	0.00	0.00	1757533.44	14608478.53	40°13'25.4025"N	80°34'49.5482"W	0.00	0.000	0.00	0.00	0.00
26.00	0.000	162.700	26.00	0.00	0.00	0.00	1757533.44	14608478.53	40°13'25.4025"N	80°34'49.5482"W	0.00	0.000	0.00	0.00	0.00
50.00	0.210	162.700	50.00	-0.04	-0.04	0.01	1757533.45	14608478.49	40°13'25.4021"N	80°34'49.5480"W	0.04	162.700	0.88	0.88	0.00
75.00	0.170	179.670	75.00	-0.12	-0.12	0.03	1757533.47	14608478.41	40°13'25.4013"N	80°34'49.5478"W	0.13	167.639	0.27	-0.16	67.88
100.00	0.230	186.260	100.00	-0.20	-0.21	0.02	1757533.46	14608478.32	40°13'25.4004"N	80°34'49.5479"W	0.21	174.106	0.26	0.24	26.36
125.00	0.240	205.050	125.00	-0.29	-0.31	-0.01	1757533.43	14608478.22	40°13'25.3995"N	80°34'49.5483"W	0.31	181.116	0.31	0.04	75.16
150.00	0.320	218.230	150.00	-0.36	-0.41	-0.07	1757533.37	14608478.12	40°13'25.3985"N	80°34'49.5491"W	0.42	189.887	0.41	0.32	52.72
175.00	0.210	206.620	175.00	-0.43	-0.51	-0.14	1757533.30	14608478.03	40°13'25.3975"N	80°34'49.5499"W	0.52	194.971	0.49	-0.44	-46.44
200.00	0.180	223.200	200.00	-0.48	-0.57	-0.18	1757533.26	14608477.96	40°13'25.3968"N	80°34'49.5505"W	0.60	197.615	0.25	-0.12	66.32
225.00	0.150	271.060	225.00	-0.48	-0.60	-0.24	1757533.20	14608477.93	40°13'25.3966"N	80°34'49.5513"W	0.65	201.882	0.55	-0.12	191.44
250.00	0.160	283.010	250.00	-0.45	-0.59	-0.31	1757533.13	14608477.94	40°13'25.3967"N	80°34'49.5522"W	0.67	207.458	0.14	0.04	47.80
275.00	0.260	251.500	275.00	-0.43	-0.60	-0.40	1757533.04	14608477.93	40°13'25.3966"N	80°34'49.5533"W	0.72	213.272	0.60	0.40	-126.04
294.00	0.250	248.800	294.00	-0.43	-0.63	-0.48	1757532.96	14608477.90	40°13'25.3963"N	80°34'49.5543"W	0.79	216.946	0.08	-0.05	-14.21
386.00	0.320	347.000	386.00	-0.18	-0.46	-0.72	1757532.72	14608478.07	40°13'25.3981"N	80°34'49.5575"W	0.85	237.726	0.47	0.08	106.74
496.00	1.490	57.590	495.98	0.43	0.61	0.42	1757533.86	14608479.14	40°13'25.4085"N	80°34'49.5427"W	0.74	34.351	1.29	1.06	64.17
585.00	2.690	57.250	584.92	1.13	2.36	3.15	1757536.59	14608480.89	40°13'25.4257"N	80°34'49.5074"W	3.94	53.159	1.35	1.35	-0.38
674.00	3.280	58.200	673.80	2.11	4.83	7.07	1757540.51	14608483.36	40°13'25.4499"N	80°34'49.4567"W	8.56	55.653	0.67	0.66	1.07
762.00	3.160	54.730	761.66	3.26	7.56	11.19	1757544.63	14608486.09	40°13'25.4767"N	80°34'49.4034"W	13.50	55.962	0.26	-0.14	-3.94
854.00	1.670	67.050	853.58	3.99	9.55	14.50	1757547.93	14608488.07	40°13'25.4962"N	80°34'49.3607"W	17.36	56.633	1.71	-1.62	13.39
945.00	0.970	103.710	944.56	3.62	9.88	16.47	1757549.90	14608488.41	40°13'25.4994"N	80°34'49.3353"W	19.20	59.032	1.17	-0.77	40.29
1033.00	0.820	154.860	1032.55	2.58	9.13	17.46	1757550.89	14608487.66	40°13'25.4920"N	80°34'49.3226"W	19.70	62.379	0.89	-0.17	58.12
1121.00	2.280	203.530	1120.51	0.69	6.96	17.03	1757550.46	14608485.49	40°13'25.4705"N	80°34'49.3283"W	18.39	67.768	2.10	1.66	55.31
1212.00	3.770	206.460	1211.39	-2.68	2.62	14.97	1757548.40	14608481.15	40°13'25.4277"N	80°34'49.3550"W	15.20	80.069	1.65	1.64	3.22
1303.00	4.830	208.780	1302.13	-7.26	-3.42	11.79	1757545.23	14608475.12	40°13'25.3682"N	80°34'49.3964"W	12.28	106.153	1.18	1.16	2.55
1395.00	5.950	207.880	1393.72	-13.00	-11.03	7.70	1757541.13	14608467.51	40°13'25.2932"N	80°34'49.4496"W	13.45	145.080	1.22	1.22	-0.98
1486.00	7.330	207.230	1484.11	-20.09	-20.36	2.84	1757536.27	14608458.18	40°13'25.2012"N	80°34'49.5129"W	20.55	172.071	1.52	1.52	-0.71
1577.00	8.220	209.040	1574.27	-28.28	-31.21	-2.98	1757530.46	14608447.34	40°13'25.0943"N	80°34'49.5885"W	31.35	185.453	1.01	0.98	1.99
1600.00	8.290	209.250	1597.03	-30.44	-34.09	-4.59	1757528.85	14608444.45	40°13'25.0659"N	80°34'49.6094"W	34.40	187.664	0.33	0.30	0.91
1699.00	7.730	207.640	1695.07	-39.57	-46.22	-11.16	1757522.28	14608432.33	40°13'24.9463"N	80°34'49.6949"W	47.54	193.580	0.61	-0.57	-1.63
1788.00	10.570	209.560	1782.92	-48.88	-58.62	-17.97	1757515.48	14608419.93	40°13'24.8241"N	80°34'49.7834"W	61.31	197.041	3.21	3.19	2.16

RECEIVED
 Department of Oil and Gas
 Environmental Protection
 03/03/2021

REFERENCE WELLPATH IDENTIFICATION			
Operator	SWN PRODUCTION COMPANY, LLC	Well	John Good Jr BRK 1H
Field	Brooke	API/Legal	
Facility	John Good Jr BRK Pad	Wellbore	John Good Jr BRK 1H AWB
Slot	Slot #1H		

WELLPATH DATA (200 stations)																
MD [ft]	Inclination [°]	Azimuth [°]	TVD [ft]	Vert Sect [ft]	North [ft]	East [ft]	Grid East [US ft]	Grid North [US ft]	Latitude	Longitude	Closure Dist [ft]	Closure Dir [°]	DLS [°/100ft]	Build Rate [°/100ft]	Turn Rate [°/100ft]	
1880.00	11.910	206.540	1873.16	-60.87	-74.45	-26.37	1757507.08	14608404.10	40°13'24.6680"N	80°34'49.8927"W	78.99	199.505	1.59	1.46	-3.28	
1972.00	12.330	202.770	1963.11	-74.58	-92.01	-34.42	1757499.04	14608386.56	40°13'24.4949"N	80°34'49.9975"W	98.23	200.510	0.97	0.46	-4.10	
2061.00	12.910	197.850	2049.96	-89.39	-110.23	-41.14	1757492.31	14608368.34	40°13'24.3152"N	80°34'50.0853"W	117.66	200.468	1.37	0.65	-5.53	
2152.00	11.070	198.040	2138.97	-104.28	-128.22	-46.97	1757486.49	14608350.36	40°13'24.1377"N	80°34'50.1614"W	136.55	200.118	2.02	-2.02	0.21	
2243.00	10.940	194.840	2228.30	-118.23	-144.87	-51.88	1757481.58	14608333.72	40°13'23.9734"N	80°34'50.2258"W	153.88	199.704	0.69	-0.14	-3.52	
2334.00	10.100	201.770	2317.77	-131.26	-160.63	-57.05	1757476.41	14608317.96	40°13'23.8179"N	80°34'50.2935"W	170.46	199.554	1.67	-0.92	7.62	
2424.00	10.350	201.840	2406.34	-143.15	-175.46	-62.99	1757470.48	14608303.14	40°13'23.6716"N	80°34'50.3709"W	186.42	199.747	0.28	0.28	0.08	
2513.00	10.530	196.790	2493.87	-155.60	-190.67	-68.31	1757465.15	14608287.93	40°13'23.5216"N	80°34'50.4404"W	202.54	199.711	1.05	0.20	-5.67	
2602.00	10.190	202.390	2581.42	-167.91	-205.73	-73.66	1757459.81	14608272.88	40°13'23.3729"N	80°34'50.5103"W	218.52	199.699	1.19	-0.38	6.29	
2692.00	10.550	200.560	2669.95	-180.04	-220.81	-79.59	1757453.89	14608257.81	40°13'23.2242"N	80°34'50.5876"W	234.71	199.821	0.54	0.40	-2.03	
2783.00	10.870	197.260	2759.37	-193.18	-236.80	-85.06	1757448.42	14608241.82	40°13'23.0664"N	80°34'50.6591"W	251.62	199.758	0.76	0.35	-3.63	
2874.00	10.410	199.560	2848.80	-206.33	-252.74	-90.36	1757443.12	14608225.88	40°13'22.9092"N	80°34'50.7284"W	268.41	199.672	0.69	-0.51	2.53	
2965.00	10.660	196.900	2938.27	-219.38	-268.55	-95.55	1757437.92	14608210.09	40°13'22.7533"N	80°34'50.7964"W	285.04	199.587	0.60	0.27	-2.92	
3056.00	10.640	193.820	3027.70	-233.08	-284.76	-100.01	1757433.47	14608193.88	40°13'22.5933"N	80°34'50.8548"W	301.81	199.352	0.63	-0.02	-3.38	
3146.00	9.600	201.000	3116.31	-245.63	-299.83	-104.68	1757428.80	14608178.81	40°13'22.4445"N	80°34'50.9160"W	317.58	199.246	1.81	-1.16	7.98	
3238.00	9.490	199.580	3207.03	-257.25	-314.14	-109.97	1757423.51	14608164.51	40°13'22.3034"N	80°34'50.9850"W	332.83	199.294	0.28	-0.12	-1.54	
3329.00	9.190	195.130	3296.83	-268.96	-328.22	-114.38	1757419.10	14608150.43	40°13'22.1644"N	80°34'51.0428"W	347.58	199.213	0.86	-0.33	-4.89	
3419.00	10.410	203.310	3385.52	-280.74	-342.63	-119.48	1757414.01	14608136.03	40°13'22.0223"N	80°34'51.1093"W	362.86	199.224	2.05	1.36	9.09	
3511.00	9.980	201.450	3476.06	-292.75	-357.68	-125.68	1757407.81	14608120.99	40°13'21.8738"N	80°34'51.1902"W	379.12	199.360	0.59	-0.47	-2.02	
3602.00	10.740	203.480	3565.58	-304.79	-372.80	-131.94	1757401.55	14608105.88	40°13'21.7248"N	80°34'51.2718"W	395.46	199.490	0.93	0.84	2.23	
3693.00	9.930	199.090	3655.10	-317.02	-387.99	-137.89	1757395.60	14608090.69	40°13'21.5749"N	80°34'51.3494"W	411.76	199.565	1.24	-0.89	-4.82	
3784.00	11.510	199.180	3744.51	-330.13	-403.98	-143.44	1757390.06	14608074.70	40°13'21.4171"N	80°34'51.4219"W	428.69	199.548	1.74	1.74	0.10	
3875.00	10.880	192.710	3833.78	-344.38	-420.94	-148.31	1757385.19	14608057.76	40°13'21.2498"N	80°34'51.4858"W	446.30	199.409	1.54	-0.69	-7.11	
3966.00	10.560	198.690	3923.20	-358.10	-437.21	-152.87	1757380.63	14608041.49	40°13'21.0892"N	80°34'51.5456"W	463.17	199.272	1.27	-0.35	6.57	
4056.00	9.960	191.740	4011.76	-371.14	-452.65	-157.10	1757376.40	14608026.06	40°13'20.9369"N	80°34'51.6010"W	479.13	199.140	1.53	-0.67	-7.72	
4147.00	9.610	201.950	4101.45	-383.47	-467.40	-161.54	1757371.96	14608011.31	40°13'20.7913"N	80°34'51.6591"W	494.53	199.066	1.94	-0.38	11.22	
4237.00	10.240	207.510	4190.10	-394.44	-481.46	-168.04	1757365.46	14607997.26	40°13'20.6527"N	80°34'51.7438"W	509.94	199.240	1.27	0.70	6.18	
4329.00	11.220	207.650	4280.49	-405.98	-496.64	-175.97	1757357.53	14607982.08	40°13'20.5030"N	80°34'51.8470"W	526.90	199.511	1.07	1.07	0.15	
4421.00	10.410	202.560	4370.86	-418.11	-512.25	-183.32	1757350.19	14607966.48	40°13'20.3491"N	80°34'51.9426"W	544.06	199.691	1.36	-0.88	-5.53	
4511.00	11.070	201.360	4459.28	-430.57	-527.80	-189.58	1757343.93	14607950.93	40°13'20.1957"N	80°34'52.0243"W	560.82	199.758	0.77	0.73	-1.33	

REFERENCE WELLPATH IDENTIFICATION			
Operator	SWN PRODUCTION COMPANY, LLC	Well	John Good Jr BRK 1H
Field	Brooke	API/Legal	
Facility	John Good Jr BRK Pad	Wellbore	John Good Jr BRK 1H AWB
Slot	Slot #1H		

WELLPATH DATA (200 stations)																
MD [ft]	Inclination [°]	Azimuth [°]	TVD [ft]	Vert Sect [ft]	North [ft]	East [ft]	Grid East [US ft]	Grid North [US ft]	Latitude	Longitude	Closure Dist [ft]	Closure Dir [°]	DLS [°/100ft]	Build Rate [°/100ft]	Turn Rate [°/100ft]	
4603.00	10.670	196.760	4549.63	-444.00	-544.18	-195.26	1757338.26	14607934.56	40°13'20.0341"N	80°34'52.0985"W	578.15	199.738	1.04	-0.43	-5.00	
4694.00	9.810	191.010	4639.18	-457.38	-559.86	-199.17	1757334.35	14607918.89	40°13'19.8794"N	80°34'52.1498"W	594.23	199.583	1.47	-0.95	-6.32	
4784.00	9.590	198.770	4727.90	-469.79	-574.49	-203.04	1757330.47	14607904.27	40°13'19.7350"N	80°34'52.2007"W	609.31	199.465	1.47	-0.24	8.62	
4889.00	7.670	197.400	4831.71	-482.16	-589.45	-207.95	1757325.57	14607889.30	40°13'19.5873"N	80°34'52.2649"W	625.06	199.432	1.84	-1.83	-1.30	
4981.00	7.390	198.310	4922.91	-491.67	-600.93	-211.65	1757321.87	14607877.83	40°13'19.4741"N	80°34'52.3132"W	637.11	199.402	0.33	-0.30	0.99	
5071.00	6.990	204.920	5012.21	-500.07	-611.39	-215.77	1757317.75	14607867.37	40°13'19.3709"N	80°34'52.3671"W	648.35	199.439	1.02	-0.44	7.34	
5163.00	9.610	243.640	5103.30	-504.87	-619.89	-225.02	1757308.50	14607858.88	40°13'19.2874"N	80°34'52.4868"W	659.47	199.951	6.54	2.85	42.09	
5254.00	9.380	292.930	5193.20	-500.64	-620.37	-238.68	1757294.85	14607858.40	40°13'19.2833"N	80°34'52.6629"W	664.70	201.044	8.67	-0.25	54.16	
5345.00	14.550	321.220	5282.26	-484.73	-608.55	-252.69	1757280.85	14607870.21	40°13'19.4007"N	80°34'52.8428"W	658.93	202.550	8.43	5.68	31.09	
5435.00	18.620	330.800	5368.52	-459.82	-587.18	-266.79	1757266.75	14607891.57	40°13'19.6125"N	80°34'53.0232"W	644.95	204.435	5.43	4.52	10.64	
5527.00	23.050	333.310	5454.48	-427.41	-558.26	-282.05	1757251.50	14607920.49	40°13'19.8991"N	80°34'53.2182"W	625.46	206.805	4.91	4.82	2.73	
5618.00	28.070	335.770	5536.55	-388.33	-522.79	-298.85	1757234.70	14607955.94	40°13'20.2503"N	80°34'53.4326"W	602.18	209.754	5.64	5.52	2.70	
5710.00	34.890	336.790	5614.97	-340.41	-478.82	-318.13	1757215.44	14607999.90	40°13'20.6858"N	80°34'53.6785"W	574.87	213.600	7.44	7.41	1.11	
5801.00	42.170	336.820	5686.11	-283.85	-426.75	-340.44	1757193.13	14608051.94	40°13'21.2013"N	80°34'53.9629"W	545.91	218.581	8.00	8.00	0.03	
5894.00	49.780	335.970	5750.69	-217.15	-365.53	-367.22	1757166.36	14608113.14	40°13'21.8075"N	80°34'54.3045"W	518.14	225.132	8.21	8.18	-0.91	
5984.00	57.780	340.400	5803.85	-144.66	-298.16	-394.04	1757139.55	14608180.49	40°13'22.4746"N	80°34'54.6461"W	494.13	232.887	9.73	8.89	4.92	
6076.00	67.430	340.520	5846.13	-63.08	-221.27	-421.32	1757112.28	14608257.35	40°13'23.2357"N	80°34'54.9932"W	475.89	242.293	10.49	10.49	0.13	
6168.00	75.380	340.700	5875.44	24.04	-139.08	-450.25	1757083.37	14608339.50	40°13'24.0492"N	80°34'55.3610"W	471.24	252.834	8.64	8.64	0.20	
6259.00	83.030	342.130	5892.47	113.33	-54.41	-478.70	1757054.92	14608424.14	40°13'24.8871"N	80°34'55.7227"W	481.78	263.515	8.55	8.41	1.57	
6351.00	90.920	342.620	5897.32	205.04	33.08	-506.49	1757027.14	14608511.59	40°13'25.7530"N	80°34'56.0757"W	507.57	273.737	8.59	8.58	0.53	
6441.00	90.520	341.340	5896.19	294.98	118.65	-534.33	1756999.31	14608597.14	40°13'26.6000"N	80°34'56.4294"W	547.35	282.520	1.49	-0.44	-1.42	
6532.00	90.090	338.430	5895.71	385.96	204.09	-565.62	1756968.03	14608682.54	40°13'27.4457"N	80°34'56.8276"W	601.32	289.841	3.23	-0.47	-3.20	
6623.00	90.340	338.780	5895.37	476.94	288.82	-598.82	1756934.85	14608767.24	40°13'28.2845"N	80°34'57.2504"W	664.83	295.749	0.47	0.27	0.38	
6714.00	90.710	339.360	5894.53	567.93	373.81	-631.33	1756902.36	14608852.20	40°13'29.1259"N	80°34'57.6643"W	733.70	300.630	0.76	0.41	0.64	
6805.00	88.980	337.510	5894.78	658.89	458.44	-664.77	1756868.93	14608936.79	40°13'29.9637"N	80°34'58.0904"W	807.52	304.591	2.78	-1.90	-2.03	
6896.00	90.620	338.330	5895.10	749.83	542.76	-698.98	1756834.73	14609021.08	40°13'30.7985"N	80°34'58.5262"W	884.96	307.829	2.01	1.80	0.90	
6988.00	90.680	338.250	5894.05	841.79	628.23	-733.01	1756800.72	14609106.51	40°13'31.6447"N	80°34'58.9598"W	965.38	310.598	0.11	0.07	-0.09	
7079.00	90.550	338.510	5893.08	932.75	712.82	-766.53	1756767.20	14609191.07	40°13'32.4822"N	80°34'59.3869"W	1046.75	312.921	0.32	-0.14	0.29	
7169.00	90.740	339.340	5892.06	1022.73	796.79	-798.89	1756734.85	14609275.02	40°13'33.3135"N	80°34'59.7990"W	1128.32	314.925	0.95	0.21	0.92	
7260.00	90.400	338.940	5891.16	1113.72	881.82	-831.30	1756702.47	14609360.01	40°13'34.1553"N	80°35'0.2116"W	1211.89	316.689	0.58	-0.37	-0.44	

REFERENCE WELLPATH IDENTIFICATION			
Operator	SWN PRODUCTION COMPANY, LLC	Well	John Good Jr BRK 1H
Field	Brooke	API/Legal	
Facility	John Good Jr BRK Pad	Wellbore	John Good Jr BRK 1H AWB
Slot	Slot #1H		

WELLPATH DATA (200 stations)																
MD [ft]	Inclination [°]	Azimuth [°]	TVD [ft]	Vert Sect [ft]	North [ft]	East [ft]	Grid East [US ft]	Grid North [US ft]	Latitude	Longitude	Closure Dist [ft]	Closure Dir [°]	DLS [°/100ft]	Build Rate [°/100ft]	Turn Rate [°/100ft]	
7351.00	90.860	339.010	5890.16	1204.70	966.76	-863.94	1756669.83	14609444.92	40°13'34.9961"N	80°35'0.6273"W	1296.54	318.215	0.51	0.51	0.08	
7442.00	90.860	338.570	5888.79	1295.67	1051.59	-896.86	1756636.93	14609529.71	40°13'35.8359"N	80°35'1.0466"W	1382.10	319.540	0.48	0.00	-0.48	
7533.00	90.430	338.940	5887.77	1386.64	1136.40	-929.83	1756603.97	14609614.49	40°13'36.6755"N	80°35'1.4665"W	1468.33	320.709	0.62	-0.47	0.41	
7624.00	90.120	338.780	5887.33	1477.63	1221.27	-962.65	1756571.16	14609699.33	40°13'37.5157"N	80°35'1.8845"W	1555.06	321.753	0.38	-0.34	-0.18	
7716.00	90.800	338.560	5886.59	1569.60	1306.97	-996.11	1756537.71	14609784.99	40°13'38.3641"N	80°35'2.3107"W	1643.29	322.687	0.78	0.74	-0.24	
7808.00	90.680	339.120	5885.40	1661.58	1392.75	-1029.32	1756504.52	14609870.75	40°13'39.2134"N	80°35'2.7337"W	1731.84	323.534	0.62	-0.13	0.61	
7899.00	90.550	339.270	5884.43	1752.57	1477.82	-1061.64	1756472.21	14609955.78	40°13'40.0554"N	80°35'3.1452"W	1819.62	324.307	0.22	-0.14	0.16	
7990.00	90.370	338.820	5883.70	1843.55	1562.79	-1094.19	1756439.68	14610040.72	40°13'40.8967"N	80°35'3.5596"W	1907.77	325.002	0.53	-0.20	-0.49	
8081.00	90.280	337.880	5883.18	1934.52	1647.37	-1127.76	1756406.12	14610125.27	40°13'41.7340"N	80°35'3.9874"W	1996.42	325.605	1.04	-0.10	-1.03	
8171.00	90.860	340.170	5882.28	2024.50	1731.40	-1159.97	1756373.92	14610209.26	40°13'42.5658"N	80°35'4.3976"W	2084.05	326.179	2.62	0.64	2.54	
8263.00	90.770	338.970	5880.98	2116.48	1817.60	-1192.08	1756341.82	14610295.43	40°13'43.4192"N	80°35'4.8064"W	2173.64	326.741	1.31	-0.10	-1.30	
8354.00	91.790	341.500	5878.94	2207.45	1903.21	-1222.84	1756311.07	14610381.01	40°13'44.2666"N	80°35'5.1978"W	2262.20	327.279	3.00	1.12	2.78	
8444.00	90.620	342.300	5877.05	2297.37	1988.74	-1250.80	1756283.13	14610466.50	40°13'45.1130"N	80°35'5.5530"W	2349.38	327.833	1.57	-1.30	0.89	
8535.00	90.340	341.290	5876.29	2388.32	2075.18	-1279.23	1756254.71	14610552.91	40°13'45.9685"N	80°35'5.9144"W	2437.78	328.349	1.15	-0.31	-1.11	
8626.00	90.370	341.470	5875.72	2479.29	2161.41	-1308.28	1756225.67	14610639.11	40°13'46.8220"N	80°35'6.2838"W	2526.52	328.814	0.20	0.03	0.20	
8717.00	91.080	341.470	5874.57	2570.25	2247.69	-1337.20	1756196.76	14610725.35	40°13'47.6759"N	80°35'6.6514"W	2615.38	329.251	0.78	0.78	0.00	
8807.00	91.880	342.060	5872.25	2660.17	2333.14	-1365.35	1756168.62	14610810.77	40°13'48.5216"N	80°35'7.0092"W	2703.28	329.664	1.10	0.89	0.66	
8898.00	90.800	342.040	5870.12	2751.08	2419.68	-1393.39	1756140.59	14610897.28	40°13'49.3781"N	80°35'7.3655"W	2792.20	330.064	1.19	-1.19	-0.02	
8989.00	90.090	341.000	5869.41	2842.04	2505.99	-1422.23	1756111.76	14610983.55	40°13'50.2323"N	80°35'7.7321"W	2881.44	330.424	1.38	-0.78	-1.14	
9080.00	90.220	341.070	5869.17	2933.02	2592.05	-1451.80	1756082.20	14611069.58	40°13'51.0841"N	80°35'8.1082"W	2970.93	330.747	0.16	0.14	0.08	
9171.00	90.650	340.750	5868.48	3024.00	2678.04	-1481.57	1756052.45	14611155.53	40°13'51.9352"N	80°35'8.4868"W	3060.54	331.047	0.59	0.47	-0.35	
9263.00	90.340	341.100	5867.68	3115.99	2764.98	-1511.63	1756022.39	14611242.45	40°13'52.7958"N	80°35'8.8692"W	3151.22	331.334	0.51	-0.34	0.38	
9353.00	89.880	339.580	5867.51	3205.98	2849.74	-1541.91	1755992.13	14611327.16	40°13'53.6347"N	80°35'9.2545"W	3240.13	331.583	1.76	-0.51	-1.69	
9444.00	90.340	340.080	5867.33	3296.98	2935.15	-1573.29	1755960.76	14611412.55	40°13'54.4802"N	80°35'9.6539"W	3330.22	331.808	0.75	0.51	0.55	
9535.00	90.680	340.500	5866.52	3387.97	3020.82	-1603.97	1755930.08	14611498.18	40°13'55.3282"N	80°35'10.0444"W	3420.25	332.033	0.59	0.37	0.46	
9625.00	90.550	339.920	5865.56	3477.97	3105.50	-1634.44	1755899.63	14611582.83	40°13'56.1664"N	80°35'10.4322"W	3509.35	332.242	0.66	-0.14	-0.64	
9716.00	90.580	339.760	5864.66	3568.96	3190.92	-1665.81	1755868.28	14611668.22	40°13'57.0119"N	80°35'10.8314"W	3599.57	332.433	0.18	0.03	-0.18	
9807.00	90.580	338.950	5863.74	3659.95	3276.07	-1697.89	1755836.21	14611753.33	40°13'57.8548"N	80°35'11.2399"W	3689.91	332.604	0.89	0.00	-0.89	
9897.00	90.710	339.990	5862.73	3749.94	3360.35	-1729.45	1755804.66	14611837.58	40°13'58.6891"N	80°35'11.6418"W	3779.28	332.767	1.16	0.14	1.16	
9989.00	90.520	339.370	5861.74	3841.94	3446.62	-1761.39	1755772.73	14611923.81	40°13'59.5431"N	80°35'12.0485"W	3870.62	332.931	0.70	-0.21	-0.67	



Actual Wellpath Report

John Good Jr BRK 1H AWP Proj: 17153'
Page 6 of 10



REFERENCE WELLPATH IDENTIFICATION

Operator	SWN PRODUCTION COMPANY, LLC	Well	John Good Jr BRK 1H
Field	Brooke	API/Legal	
Facility	John Good Jr BRK Pad	Wellbore	John Good Jr BRK 1H AWB
Slot	Slot #1H		

WELLPATH DATA (200 stations)

MD [ft]	Inclination [°]	Azimuth [°]	TVD [ft]	Vert Sect [ft]	North [ft]	East [ft]	Grid East [US ft]	Grid North [US ft]	Latitude	Longitude	Closure Dist [ft]	Closure Dir [°]	DLS [°/100ft]	Build Rate [°/100ft]	Turn Rate [°/100ft]
10078.00	91.720	340.770	5860.00	3930.91	3530.27	-1791.73	1755742.41	14612007.43	40°14'0.3711"N	80°35'12.4345"W	3958.92	333.091	2.07	1.35	1.57
10168.00	90.650	340.990	5858.14	4020.88	3615.28	-1821.20	1755712.95	14612092.42	40°14'1.2126"N	80°35'12.8094"W	4048.09	333.263	1.21	-1.19	0.24
10259.00	90.520	340.400	5857.21	4111.87	3701.16	-1851.28	1755682.87	14612178.26	40°14'2.0626"N	80°35'13.1921"W	4138.34	333.426	0.66	-0.14	-0.65
10352.00	88.950	340.200	5857.64	4204.86	3788.71	-1882.63	1755651.54	14612265.78	40°14'2.9292"N	80°35'13.5911"W	4230.68	333.577	1.70	-1.69	-0.22
10443.00	90.090	339.850	5858.40	4295.86	3874.23	-1913.71	1755620.47	14612351.27	40°14'3.7757"N	80°35'13.9867"W	4321.11	333.713	1.31	1.25	-0.38
10533.00	90.830	340.030	5857.68	4385.85	3958.77	-1944.58	1755589.61	14612435.77	40°14'4.6125"N	80°35'14.3797"W	4410.59	333.839	0.85	0.82	0.20
10625.00	90.710	339.620	5856.44	4477.84	4045.12	-1976.31	1755557.89	14612522.09	40°14'5.4673"N	80°35'14.7836"W	4502.09	333.961	0.46	-0.13	-0.45
10716.00	90.740	339.530	5855.29	4568.84	4130.39	-2008.06	1755526.15	14612607.32	40°14'6.3114"N	80°35'15.1879"W	4592.65	334.072	0.10	0.03	-0.10
10806.00	90.890	340.260	5854.01	4658.83	4214.90	-2039.00	1755495.23	14612691.80	40°14'7.1479"N	80°35'15.5817"W	4682.19	334.184	0.83	0.17	0.81
10897.00	91.050	340.850	5852.47	4749.81	4300.69	-2069.29	1755464.95	14612777.56	40°14'7.9971"N	80°35'15.9671"W	4772.62	334.305	0.67	0.18	0.65
10988.00	91.170	341.050	5850.71	4840.77	4386.69	-2098.98	1755435.27	14612863.53	40°14'8.8483"N	80°35'16.3448"W	4863.00	334.429	0.26	0.13	0.22
11078.00	90.340	339.440	5849.52	4930.76	4471.39	-2129.40	1755404.86	14612948.19	40°14'9.6866"N	80°35'16.7320"W	4952.54	334.535	2.01	-0.92	-1.79
11170.00	90.860	340.370	5848.56	5022.75	4557.78	-2161.01	1755373.27	14613034.55	40°14'10.5418"N	80°35'17.1343"W	5044.14	334.633	1.16	0.57	1.01
11261.00	90.950	340.510	5847.12	5113.74	4643.52	-2191.47	1755342.82	14613120.25	40°14'11.3904"N	80°35'17.5220"W	5134.67	334.735	0.18	0.10	0.15
11351.00	90.890	340.460	5845.68	5203.72	4728.34	-2221.53	1755312.77	14613205.04	40°14'12.2300"N	80°35'17.9045"W	5224.21	334.834	0.09	-0.07	-0.06
11442.00	90.980	340.950	5844.19	5294.70	4814.21	-2251.60	1755282.71	14613290.88	40°14'13.0800"N	80°35'18.2870"W	5314.73	334.935	0.55	0.10	0.54
11533.00	91.170	340.140	5842.48	5385.68	4900.00	-2281.90	1755252.42	14613376.64	40°14'13.9291"N	80°35'18.6726"W	5405.28	335.029	0.91	0.21	-0.89
11623.00	91.050	340.240	5840.74	5475.66	4984.66	-2312.39	1755221.94	14613461.26	40°14'14.7671"N	80°35'19.0608"W	5494.91	335.113	0.17	-0.13	0.11
11714.00	90.800	340.070	5839.27	5566.65	5070.24	-2343.28	1755191.06	14613546.82	40°14'15.6142"N	80°35'19.4540"W	5585.55	335.195	0.33	-0.27	-0.19
11806.00	90.950	340.380	5837.87	5658.64	5156.81	-2374.41	1755159.95	14613633.35	40°14'16.4710"N	80°35'19.8501"W	5677.19	335.277	0.37	0.16	0.34
11896.00	90.890	340.430	5836.42	5748.62	5241.59	-2404.58	1755129.78	14613718.09	40°14'17.3102"N	80°35'20.2342"W	5766.82	335.357	0.09	-0.07	0.06
11987.00	90.400	339.820	5835.40	5839.61	5327.16	-2435.52	1755098.86	14613803.63	40°14'18.1572"N	80°35'20.6279"W	5857.51	335.431	0.86	-0.54	-0.67
12078.00	90.740	340.330	5834.49	5930.61	5412.71	-2466.53	1755067.86	14613889.15	40°14'19.0040"N	80°35'21.0227"W	5948.21	335.502	0.67	0.37	0.56
12168.00	90.830	340.560	5833.26	6020.60	5497.51	-2496.65	1755037.75	14613973.91	40°14'19.8434"N	80°35'21.4060"W	6037.87	335.575	0.27	0.10	0.26
12259.00	90.890	338.380	5831.89	6111.58	5582.71	-2528.56	1755005.86	14614059.09	40°14'20.6868"N	80°35'21.8124"W	6128.65	335.633	2.40	0.07	-2.40
12350.00	90.920	340.090	5830.45	6202.56	5667.79	-2560.82	1754973.61	14614144.13	40°14'21.5290"N	80°35'22.2233"W	6219.45	335.686	1.88	0.03	1.88
12440.00	90.830	339.970	5829.08	6292.55	5752.37	-2591.55	1754942.89	14614228.68	40°14'22.3662"N	80°35'22.6145"W	6309.19	335.748	0.17	-0.10	-0.13
12531.00	90.550	337.220	5827.98	6383.51	5837.08	-2624.76	1754909.70	14614313.35	40°14'23.2048"N	80°35'23.0376"W	6400.06	335.788	3.04	-0.31	-3.02
12621.00	90.770	338.290	5826.95	6473.44	5920.37	-2658.82	1754875.64	14614396.61	40°14'24.0294"N	80°35'23.4720"W	6490.00	335.815	1.21	0.24	1.19
12712.00	90.770	340.000	5825.72	6564.42	6005.40	-2691.22	1754843.26	14614481.61	40°14'24.8711"N	80°35'23.8846"W	6580.84	335.861	1.88	0.00	1.88



Actual Wellpath Report

John Good Jr BRK 1H AWP Proj: 17153'
Page 7 of 10



REFERENCE WELLPATH IDENTIFICATION			
Operator	SWN PRODUCTION COMPANY, LLC	Well	John Good Jr BRK 1H
Field	Brooke	API/Legal	
Facility	John Good Jr BRK Pad	Wellbore	John Good Jr BRK 1H AWB
Slot	Slot #1H		

WELLPATH DATA (200 stations)															
MD [ft]	Inclination [°]	Azimuth [°]	TVD [ft]	Vert Sect [ft]	North [ft]	East [ft]	Grid East [US ft]	Grid North [US ft]	Latitude	Longitude	Closure Dist [ft]	Closure Dir [°]	DLS [°/100ft]	Build Rate [°/100ft]	Turn Rate [°/100ft]
12803.00	90.680	340.180	5824.57	6655.41	6090.95	-2722.20	1754812.29	14614567.13	40°14'25.7180"N	80°35'24.2791"W	6671.59	335.919	0.22	-0.10	0.20
12893.00	90.770	339.800	5823.43	6745.40	6175.51	-2753.00	1754781.51	14614651.66	40°14'26.5550"N	80°35'24.6711"W	6761.36	335.973	0.43	0.10	-0.42
12984.00	90.800	340.640	5822.19	6836.39	6261.13	-2783.79	1754750.73	14614737.25	40°14'27.4025"N	80°35'25.0631"W	6852.10	336.029	0.92	0.03	0.92
13075.00	90.950	340.480	5820.80	6927.37	6346.94	-2814.07	1754720.45	14614823.01	40°14'28.2518"N	80°35'25.4485"W	6942.81	336.089	0.24	0.16	-0.18
13165.00	91.020	340.810	5819.25	7017.35	6431.84	-2843.90	1754690.64	14614907.88	40°14'29.0921"N	80°35'25.8280"W	7032.52	336.147	0.37	0.08	0.37
13256.00	90.890	340.130	5817.73	7108.34	6517.59	-2874.31	1754660.24	14614993.60	40°14'29.9409"N	80°35'26.2151"W	7123.25	336.202	0.76	-0.14	-0.75
13347.00	91.020	340.500	5816.22	7199.32	6603.26	-2904.96	1754629.60	14615079.24	40°14'30.7888"N	80°35'26.6052"W	7214.00	336.254	0.43	0.14	0.41
13437.00	90.890	340.480	5814.72	7289.30	6688.08	-2935.02	1754599.56	14615164.03	40°14'31.6284"N	80°35'26.9877"W	7303.75	336.306	0.15	-0.14	-0.02
13528.00	90.490	339.880	5813.62	7380.30	6773.68	-2965.87	1754568.72	14615249.60	40°14'32.4757"N	80°35'27.3805"W	7394.53	336.354	0.79	-0.44	-0.66
13619.00	90.650	340.410	5812.72	7471.29	6859.27	-2996.77	1754537.82	14615335.15	40°14'33.3229"N	80°35'27.7739"W	7485.33	336.400	0.61	0.18	0.58
13710.00	90.340	340.240	5811.93	7562.28	6944.95	-3027.41	1754507.20	14615420.80	40°14'34.1710"N	80°35'28.1639"W	7576.12	336.447	0.39	-0.34	-0.19
13803.00	90.550	340.320	5811.21	7655.28	7032.50	-3058.79	1754475.83	14615508.31	40°14'35.0375"N	80°35'28.5633"W	7668.91	336.493	0.24	0.23	0.09
13895.00	89.820	339.810	5810.91	7747.28	7118.98	-3090.16	1754444.48	14615594.76	40°14'35.8936"N	80°35'28.9627"W	7760.73	336.536	0.97	-0.79	-0.55
13987.00	90.890	340.360	5810.34	7839.27	7205.48	-3121.49	1754413.15	14615681.22	40°14'36.7497"N	80°35'29.3617"W	7852.55	336.577	1.31	1.16	0.60
14078.00	90.710	340.240	5809.07	7930.26	7291.14	-3152.17	1754382.49	14615766.85	40°14'37.5976"N	80°35'29.7521"W	7943.36	336.620	0.24	-0.20	-0.13
14169.00	90.090	340.790	5808.43	8021.25	7376.93	-3182.52	1754352.15	14615852.61	40°14'38.4467"N	80°35'30.1384"W	8034.14	336.664	0.91	-0.68	0.60
14260.00	90.680	340.620	5807.82	8112.24	7462.81	-3212.59	1754322.09	14615938.46	40°14'39.2968"N	80°35'30.5211"W	8124.92	336.709	0.67	0.65	-0.19
14351.00	90.090	340.470	5807.21	8203.23	7548.62	-3242.90	1754291.80	14616024.23	40°14'40.1461"N	80°35'30.9068"W	8215.71	336.752	0.67	-0.65	-0.16
14443.00	89.940	339.630	5807.19	8295.23	7635.09	-3274.29	1754260.42	14616110.67	40°14'41.0021"N	80°35'31.3065"W	8307.56	336.788	0.93	-0.16	-0.91
14536.00	90.770	339.430	5806.61	8388.23	7722.22	-3306.81	1754227.91	14616197.77	40°14'41.8645"N	80°35'31.7207"W	8400.45	336.818	0.92	0.89	-0.22
14629.00	90.860	339.100	5805.29	8481.21	7809.19	-3339.73	1754195.00	14616284.70	40°14'42.7254"N	80°35'32.1401"W	8493.36	336.845	0.37	0.10	-0.35
14723.00	91.050	339.820	5803.72	8575.20	7897.20	-3372.71	1754162.03	14616372.68	40°14'43.5966"N	80°35'32.5602"W	8587.25	336.874	0.79	0.20	0.77
14814.00	90.550	339.300	5802.45	8666.19	7982.46	-3404.48	1754130.27	14616457.91	40°14'44.4406"N	80°35'32.9649"W	8678.14	336.902	0.79	-0.55	-0.57
14907.00	89.970	339.090	5802.03	8759.18	8069.39	-3437.52	1754097.25	14616544.81	40°14'45.3011"N	80°35'33.3857"W	8771.07	336.926	0.66	-0.62	-0.23
15000.00	90.650	338.840	5801.53	8852.16	8156.19	-3470.90	1754063.88	14616631.57	40°14'46.1604"N	80°35'33.8111"W	8864.01	336.948	0.78	0.73	-0.27
15092.00	91.050	339.800	5800.16	8944.15	8242.26	-3503.38	1754031.41	14616717.60	40°14'47.0123"N	80°35'34.2249"W	8955.92	336.972	1.13	0.43	1.04
15184.00	90.030	339.260	5799.29	9036.14	8328.44	-3535.55	1753999.25	14616803.75	40°14'47.8654"N	80°35'34.6347"W	9047.82	336.998	1.25	-1.11	-0.59
15277.00	90.400	339.610	5798.94	9129.13	8415.51	-3568.22	1753966.60	14616890.79	40°14'48.7274"N	80°35'35.0508"W	9140.74	337.023	0.55	0.40	0.38
15367.00	90.950	339.760	5797.88	9219.13	8499.91	-3599.47	1753935.36	14616975.16	40°14'49.5628"N	80°35'35.4488"W	9230.63	337.049	0.63	0.61	0.17
15458.00	90.460	339.590	5796.77	9310.12	8585.24	-3631.07	1753903.77	14617060.45	40°14'50.4074"N	80°35'35.8513"W	9321.53	337.074	0.57	-0.54	-0.19

REFERENCE WELLPATH IDENTIFICATION			
Operator	SWN PRODUCTION COMPANY, LLC	Well	John Good Jr BRK 1H
Field	Brooke	API/Legal	
Facility	John Good Jr BRK Pad	Wellbore	John Good Jr BRK 1H AWB
Slot	Slot #1H		

WELLPATH DATA (200 stations) † = interpolated, ‡ = extrapolated station																
MD [ft]	Inclination [°]	Azimuth [°]	TVD [ft]	Vert Sect [ft]	North [ft]	East [ft]	Grid East [US ft]	Grid North [US ft]	Latitude	Longitude	Closure Dist [ft]	Closure Dir [°]	DLS [°/100ft]	Build Rate [°/100ft]	Turn Rate [°/100ft]	
15551.00	90.650	339.570	5795.86	9403.11	8672.39	-3663.52	1753871.34	14617147.57	40°14'51.2701"N	80°35'36.2646"W	9414.44	337.099	0.21	0.20	-0.02	
15643.00	90.340	339.810	5795.07	9495.11	8758.67	-3695.45	1753839.42	14617233.81	40°14'52.1241"N	80°35'36.6713"W	9506.34	337.124	0.43	-0.34	0.26	
15735.00	90.800	340.060	5794.15	9587.10	8845.08	-3727.01	1753807.87	14617320.19	40°14'52.9794"N	80°35'37.0732"W	9598.23	337.151	0.57	0.50	0.27	
15826.00	90.520	339.770	5793.11	9678.10	8930.54	-3758.26	1753776.63	14617405.62	40°14'53.8253"N	80°35'37.4711"W	9689.12	337.177	0.44	-0.31	-0.32	
15917.00	89.820	339.220	5792.84	9769.09	9015.77	-3790.14	1753744.77	14617490.82	40°14'54.6690"N	80°35'37.8772"W	9780.04	337.199	0.98	-0.77	-0.60	
16010.00	90.400	339.710	5792.66	9862.09	9102.86	-3822.76	1753712.16	14617577.87	40°14'55.5311"N	80°35'38.2928"W	9872.97	337.220	0.82	0.62	0.53	
16102.00	91.020	339.880	5791.52	9954.08	9189.19	-3854.53	1753680.40	14617664.17	40°14'56.3857"N	80°35'38.6974"W	9964.87	337.244	0.70	0.67	0.18	
16193.00	90.680	339.920	5790.17	10045.07	9274.64	-3885.80	1753649.14	14617749.59	40°14'57.2314"N	80°35'39.0956"W	10055.76	337.268	0.38	-0.37	0.04	
16286.00	90.740	339.290	5789.01	10138.06	9361.80	-3918.21	1753616.75	14617836.72	40°14'58.0942"N	80°35'39.5084"W	10148.68	337.289	0.68	0.06	-0.68	
16379.00	90.650	339.340	5787.89	10231.05	9448.80	-3951.06	1753583.91	14617923.68	40°14'58.9554"N	80°35'39.9269"W	10241.61	337.308	0.11	-0.10	0.05	
16470.00	90.460	339.370	5787.01	10322.04	9533.95	-3983.14	1753551.84	14618008.80	40°14'59.7983"N	80°35'40.3357"W	10332.55	337.326	0.21	-0.21	0.03	
16562.00	90.800	339.020	5785.99	10414.03	9619.95	-4015.81	1753519.18	14618094.76	40°15'0.6496"N	80°35'40.7520"W	10424.50	337.342	0.53	0.37	-0.38	
16653.00	90.680	339.220	5784.82	10505.01	9704.97	-4048.24	1753486.76	14618179.75	40°15'1.4912"N	80°35'41.1652"W	10515.45	337.357	0.26	-0.13	0.22	
16743.00	90.710	339.360	5783.73	10595.00	9789.14	-4080.07	1753454.95	14618263.89	40°15'2.3245"N	80°35'41.5707"W	10605.39	337.374	0.16	0.03	0.16	
16834.00	90.710	339.630	5782.60	10685.99	9874.37	-4111.94	1753423.08	14618349.09	40°15'3.1681"N	80°35'41.9768"W	10696.32	337.392	0.30	0.00	0.30	
16925.00	90.680	339.300	5781.50	10776.98	9959.58	-4143.86	1753391.18	14618434.26	40°15'4.0116"N	80°35'42.3834"W	10787.26	337.409	0.36	-0.03	-0.36	
17015.00	90.890	339.370	5780.26	10866.97	10043.78	-4175.62	1753359.43	14618518.43	40°15'4.8451"N	80°35'42.7880"W	10877.20	337.425	0.25	0.23	0.08	
17107.00	90.860	339.760	5778.86	10958.96	10129.98	-4207.74	1753327.33	14618604.60	40°15'5.6983"N	80°35'43.1972"W	10969.12	337.443	0.43	-0.03	0.42	
17128.00	90.710	339.630	5778.57	10979.96	10149.68	-4215.02	1753320.04	14618624.29	40°15'5.8933"N	80°35'43.2900"W	10990.10	337.448	0.95	-0.71	-0.62	
17153.00‡	90.710	339.630	5778.26	11004.95	10173.11	-4223.73	1753311.35	14618647.71	40°15'6.1252"N	80°35'43.4008"W	11015.08	337.452	0.00	0.00	0.00	

REFERENCE WELLPATH IDENTIFICATION			
Operator	SWN PRODUCTION COMPANY, LLC	Well	John Good Jr BRK 1H
Field	Brooke	API/Legal	
Facility	John Good Jr BRK Pad	Wellbore	John Good Jr BRK 1H AWB
Slot	Slot #1H		

HOLE & CASING SECTIONS - Ref Wellbore: John Good Jr BRK 1H AWB Ref Wellpath: John Good Jr BRK 1H AWP Proj: 17153'									
String/Diameter	Start MD [ft]	End MD [ft]	Interval [ft]	Start TVD [ft]	End TVD [ft]	Start N/S [ft]	Start E/W [ft]	End N/S [ft]	End E/W [ft]
20in Conductor	26.00	100.00	74.00	26.00	100.00	0.00	0.00	-0.21	0.02
17.5in Open Hole	100.00	383.00	283.00	100.00	383.00	-0.21	0.02	-0.47	-0.72
13.375in Casing Surface	26.00	383.00	357.00	26.00	383.00	0.00	0.00	-0.47	-0.72
12.25in Open Hole	383.00	1665.00	1282.00	383.00	1661.38	-0.47	-0.72	-42.13	-8.99
9.625in Casing Intermediate	26.00	1660.00	1634.00	26.00	1656.43	0.00	0.00	-41.52	-8.67
8.75in Open Hole	1665.00	4849.00	3184.00	1661.38	4792.10	-42.13	-8.99	-584.13	-206.25
8.5in Open Hole	4849.00	17153.00	12304.00	4792.10	5778.26	-584.13	-206.25	10173.11	-4223.73
5.5in Casing Production	26.00	17153.00	17127.00	26.00	5778.26	0.00	0.00	10173.11	-4223.73

TARGETS								
Name	TVD [ft]	North [ft]	East [ft]	Grid East [US ft]	Grid North [US ft]	Latitude	Longitude	Shape
John Good BRK 1H BHL Rev-4	5751.77	10172.66	-4225.75	1753309.32	14618647.26	40°15'6.1209"N	80°35'43.4270"W	point
John Good BRK 1H LP Rev-4	5896.00	20.93	-511.67	1757021.97	14608499.45	40°13'25.6332"N	80°34'56.1431"W	point

WELLPATH COMPOSITION - Ref Wellbore: John Good Jr BRK 1H AWB Ref Wellpath: John Good Jr BRK 1H AWP Proj: 17153'					
Start MD [ft]	End MD [ft]	Positional Uncertainty Model	Log Name/Comment	Wellbore	Survey Date
26.00	294.00	Gyrodata 2015 - GC+WIR+DPIPE	01 Gyrodata <17-1/2"> (50'-294')	John Good Jr BRK 1H AWB	4/26/2021
294.00	1600.00	OWSG MWD rev2 + HRGM	02 Premier MWD <12-1/4"> (386'-1600')	John Good Jr BRK 1H AWB	4/26/2021
1600.00	4784.00	OWSG MWD rev2 + HRGM	03 Premier MWD <8-3/4"> (1699'-4784')	John Good Jr BRK 1H AWB	4/26/2021
4784.00	17153.00	BH AutoTrak Curve/eXpress (2019) (HRGM, Short spacing)	04 BH AT Curve <8-1/2"> (4889'-17128')	John Good Jr BRK 1H AWB	4/26/2021

REFERENCE WELLPATH IDENTIFICATION			
Operator	SWN PRODUCTION COMPANY, LLC	Well	John Good Jr BRK 1H
Field	Brooke	API/Legal	
Facility	John Good Jr BRK Pad	Wellbore	John Good Jr BRK 1H AWB
Slot	Slot #1H		

COMMENTS
<p>Wellpath general comments API: 47-009-00320-0000 BH Job #: 110819274 Rig: SDC 40 Duration: 04/27/2021 - 04/29/2021</p>

RECEIVED
 Office of Oil and Gas
NOV 03 2021
 WV Department of
 Environmental Protection