

# SWN PRODUCTION COMPANY, LLC

Location: Brooke County, WV  
 Field: Brooke  
 Facility: John Good Jr BRK Pad

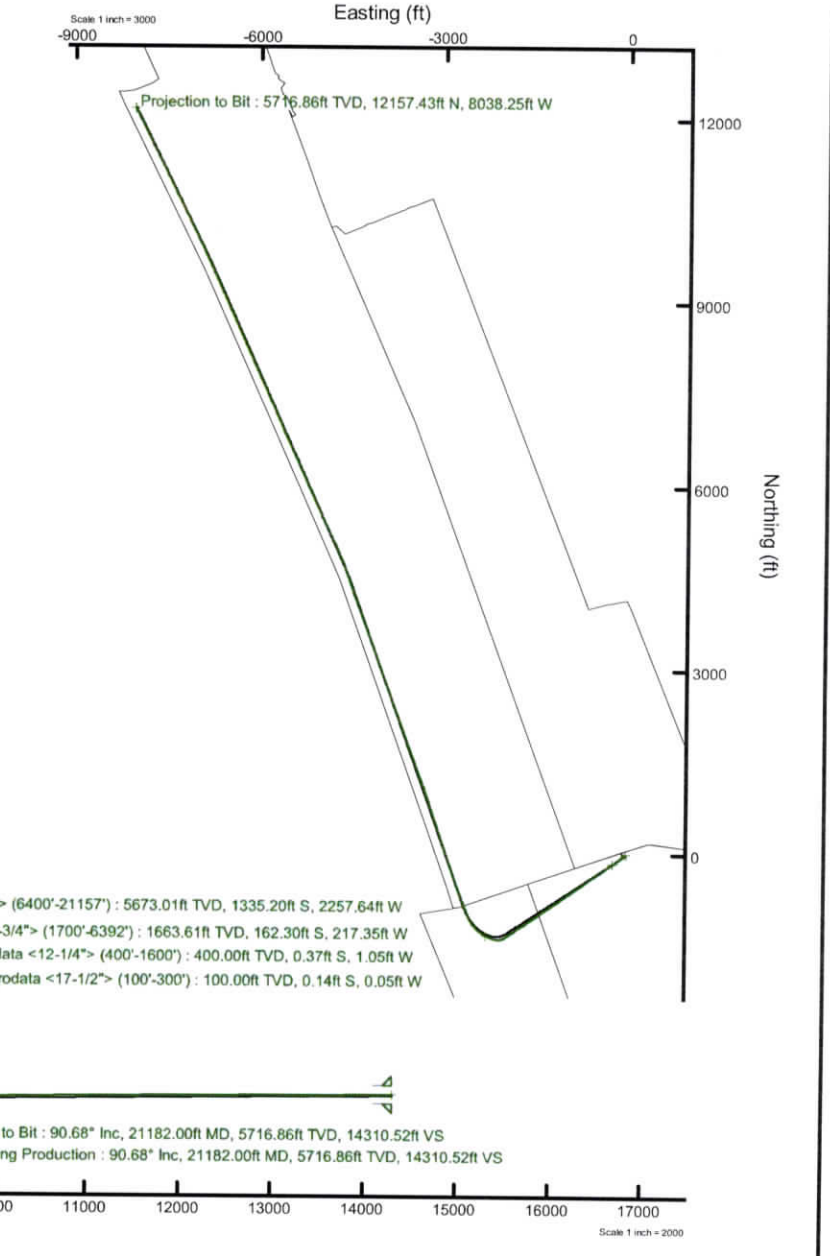
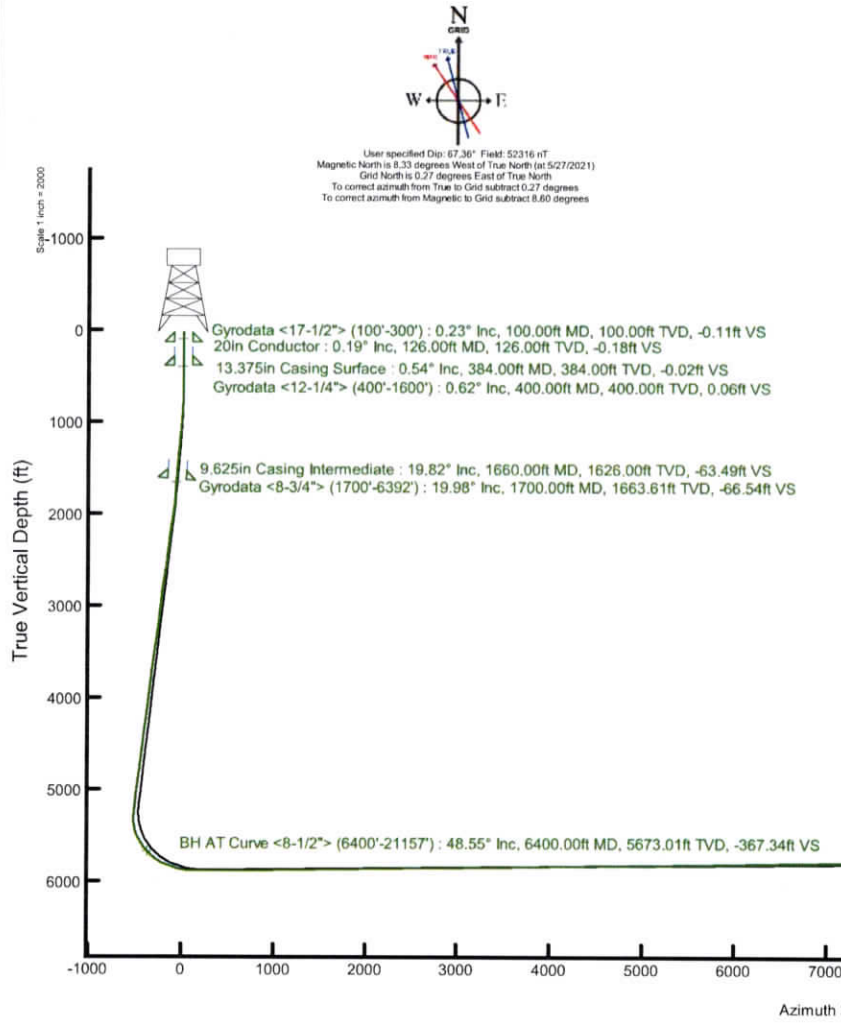
Slot: Slot #601H  
 Well: John Good JR BRK 601H  
 Wellbore: John Good JR BRK 601H PWB



Plot reference wellpath is John Good JR BRK 601H PWP Rev-A.0	Grid System: NAD83 / UTM Zone: 17 North, US feet
True vertical depths are referenced to SDC 40 (KB)	North Reference: Grid north
Reference wellpath measured depths are referenced to SDC 40 (KB)	Scale: True distance
SDC 40 (KB) to Mean Sea Level: 1179.4 feet	Coordinates are in feet referenced to Slot
Mean Sea Level to Ground level (At Slot: Slot #601H): -1153.4 feet	Depths are in feet
Offset wellpath MDs are referenced to each path's default MD datum	Created by: alexeyn on 2021-06-15; Database: WA_MPL_EASTERNUS_Deht

API: 47-009-00324-0000  
 BH Job #: 110870156  
 Rig: SDC 40  
 Duration: 06/07/2021 - 06/10/2021

Location Information					
Facility Name		Grid East (US ft)	Grid North (US ft)	Latitude	Longitude
John Good Jr BRK Pad		1757463.232	14608504.851	40°13'25.6660"N	80°34'50.4520"W
Slot	Local N (ft)	Local E (ft)	Grid East (US ft)	Grid North (US ft)	Latitude
Slot #601H	2.92	61.83	1757525.040	14608507.770	40°13'25.6920"N
SDC 40 (KB) to Ground level (At Slot: Slot #601H)				26ft	
Mean Sea Level to Ground level (At Slot: Slot #601H)				-1153.4ft	
SDC 40 (KB) to Mean Sea Level				1179.4ft	



Vertical Section (ft)  
 Azimuth 337.45° with reference 0.00 N, 0.00 E

REFERENCE WELLPATH IDENTIFICATION			
Operator	SWN PRODUCTION COMPANY, LLC	Well	John Good JR BRK 601H
Field	Brooke	API/Legal	
Facility	John Good Jr BRK Pad	Wellbore	John Good Jr BRK 601H AWB
Slot	Slot #601H		

REPORT SETUP INFORMATION			
Projection System	NAD83 / UTM Zone 17 North, US feet	Software System	WellArchitect® 6.0
North Reference	Grid	User	Atenjen
Scale	0.999616	Report Generated	6/15/2021 at 4:03:39 PM
Convergence at slot	0.27° East	Database	WA_MPL_EASTERNUS_Defn

WELLPATH LOCATION						
	Local coordinates		Grid coordinates		Geographic coordinates	
	North[ft]	East[ft]	Easting[US ft]	Northing[US ft]	Latitude	Longitude
Slot Location	2.92	61.83	1757525.04	14608507.77	40°13'25.6920"N	80°34'49.6547"W
Facility Reference Pt			1757463.23	14608504.85	40°13'25.6660"N	80°34'50.4520"W
Field Reference Pt			0.00	0.00	0°00'0.0000"	85°29'19.4780"W

WELLPATH DATUM			
Calculation method	Minimum curvature	SDC 40 (KB) to Facility Vertical Datum	1179.40ft
Horizontal Reference Pt	Slot	SDC 40 (KB) to Mean Sea Level	1179.40ft
Vertical Reference Pt	SDC 40 (KB)	SDC 40 (KB) to Ground Level at Slot (Slot #601H)	26.00ft
MD Reference Pt	SDC 40 (KB)	Section Origin	N 0.00, E 0.00 ft
Field Vertical Reference	Mean Sea Level	Section Azimuth	337.45°

REFERENCE WELLPATH IDENTIFICATION			
Operator	SWN PRODUCTION COMPANY, LLC	Well	John Good JR BRK 601H
Field	Brooke	API/Legal	
Facility	John Good Jr BRK Pad	Wellbore	John Good Jr BRK 601H AWB
Slot	Slot #601H		

WELLPATH DATA (233 stations) † = interpolated, ‡ = extrapolated station															
MD [ft]	Inclination [°]	Azimuth [°]	TVD [ft]	Vert Sect [ft]	North [ft]	East [ft]	Grid East [US ft]	Grid North [US ft]	Latitude	Longitude	Closure Dist [ft]	Closure Dir [°]	DLS [°/100ft]	Build Rate [°/100ft]	Turn Rate [°/100ft]
0.00†	0.000	198.570	0.00	0.00	0.00	0.00	1757525.04	14608507.77	40°13'25.6920"N	80°34'49.6547"W	0.00	0.000	0.00	0.00	0.00
26.00	0.000	198.570	26.00	0.00	0.00	0.00	1757525.04	14608507.77	40°13'25.6920"N	80°34'49.6547"W	0.00	0.000	0.00	0.00	0.00
100.00	0.230	198.570	100.00	-0.11	-0.14	-0.05	1757524.99	14608507.63	40°13'25.6906"N	80°34'49.6553"W	0.15	198.570	0.31	0.31	0.00
200.00	0.120	258.360	200.00	-0.24	-0.35	-0.21	1757524.83	14608507.42	40°13'25.6885"N	80°34'49.6575"W	0.41	211.259	0.20	-0.11	59.79
300.00	0.120	249.500	300.00	-0.22	-0.41	-0.41	1757524.63	14608507.36	40°13'25.6879"N	80°34'49.6601"W	0.58	225.309	0.02	0.00	-8.86
400.00	0.620	277.940	400.00	0.06	-0.37	-1.05	1757523.99	14608507.40	40°13'25.6883"N	80°34'49.6682"W	1.11	250.467	0.52	0.50	28.44
500.00	2.670	262.170	499.95	0.93	-0.61	-3.89	1757521.15	14608507.16	40°13'25.6861"N	80°34'49.7049"W	3.94	261.027	2.08	2.05	-15.77
600.00	4.700	249.670	599.74	1.68	-2.36	-10.04	1757515.00	14608505.42	40°13'25.6692"N	80°34'49.7843"W	10.31	256.799	2.17	2.03	-12.50
700.00	6.330	240.760	699.28	1.19	-6.47	-18.69	1757506.35	14608501.30	40°13'25.6289"N	80°34'49.8961"W	19.78	250.905	1.84	1.63	-8.91
800.00	7.430	232.610	798.56	-1.11	-13.09	-28.64	1757496.41	14608494.68	40°13'25.5639"N	80°34'50.0248"W	31.49	245.437	1.47	1.10	-8.15
900.00	9.830	227.840	897.42	-5.63	-22.75	-40.11	1757484.95	14608485.03	40°13'25.4690"N	80°34'50.1732"W	46.11	240.440	2.50	2.40	-4.77
1000.00	12.070	226.420	995.59	-12.25	-35.69	-54.01	1757471.05	14608472.10	40°13'25.3418"N	80°34'50.3532"W	64.74	236.546	2.26	2.24	-1.42
1100.00	13.970	224.820	1093.02	-20.64	-51.46	-70.10	1757454.97	14608456.33	40°13'25.1867"N	80°34'50.5615"W	86.96	233.717	1.93	1.90	-1.60
1200.00	15.390	229.810	1189.75	-29.31	-68.59	-88.74	1757436.33	14608439.21	40°13'25.0184"N	80°34'50.8029"W	112.16	232.301	1.90	1.42	4.99
1300.00	17.290	233.670	1285.71	-36.87	-85.95	-110.85	1757414.23	14608421.85	40°13'24.8478"N	80°34'51.0890"W	140.27	232.211	2.19	1.90	3.86
1400.00	18.880	234.260	1380.77	-44.10	-104.21	-135.96	1757389.13	14608403.60	40°13'24.6685"N	80°34'51.4138"W	171.30	232.531	1.60	1.59	0.59
1500.00	19.410	234.290	1475.24	-51.58	-123.36	-162.59	1757362.52	14608384.46	40°13'24.4805"N	80°34'51.7582"W	204.09	232.811	0.53	0.53	0.03
1600.00	19.570	234.810	1569.51	-59.03	-142.71	-189.76	1757335.35	14608365.12	40°13'24.2906"N	80°34'52.1098"W	237.44	233.056	0.24	0.16	0.52
1700.00	19.980	234.420	1663.61	-66.54	-162.30	-217.35	1757307.78	14608345.53	40°13'24.0983"N	80°34'52.4665"W	271.26	233.250	0.43	0.41	-0.39
1800.00	21.980	236.720	1756.98	-73.88	-182.51	-246.89	1757278.25	14608325.33	40°13'23.8999"N	80°34'52.8486"W	307.03	233.526	2.16	2.00	2.30
1900.00	25.320	236.360	1848.57	-81.48	-204.63	-280.35	1757244.80	14608303.21	40°13'23.6829"N	80°34'53.2813"W	347.09	233.873	3.34	3.34	-0.36
2000.00	28.340	234.810	1937.79	-90.79	-230.17	-317.56	1757207.61	14608277.69	40°13'23.4323"N	80°34'53.7625"W	392.20	234.065	3.10	3.02	-1.55
2100.00	29.860	233.100	2025.17	-102.15	-258.79	-356.86	1757168.31	14608249.08	40°13'23.1513"N	80°34'54.2710"W	440.82	234.051	1.73	1.52	-1.71
2200.00	31.280	234.480	2111.27	-114.15	-288.82	-397.90	1757127.29	14608219.06	40°13'22.8564"N	80°34'54.8019"W	491.68	234.025	1.58	1.42	1.38
2300.00	33.200	235.160	2195.85	-125.81	-319.55	-441.51	1757083.70	14608188.34	40°13'22.5548"N	80°34'55.3659"W	545.02	234.104	1.95	1.92	0.68
2400.00	32.480	237.460	2279.87	-136.29	-349.64	-486.62	1757038.61	14608158.27	40°13'22.2596"N	80°34'55.9493"W	599.20	234.303	1.44	-0.72	2.30
2500.00	31.320	236.510	2364.76	-145.88	-378.42	-530.93	1756994.31	14608129.49	40°13'21.9772"N	80°34'56.5223"W	651.99	234.521	1.26	-1.16	-0.95
2600.00	31.900	235.350	2449.93	-156.35	-407.79	-574.34	1756950.92	14608100.14	40°13'21.6891"N	80°34'57.0837"W	704.39	234.625	0.84	0.58	-1.16
2700.00	31.460	233.250	2535.03	-168.29	-438.42	-616.99	1756908.29	14608069.52	40°13'21.3883"N	80°34'57.6353"W	756.90	234.603	1.19	-0.44	-2.10
2800.00	32.330	232.740	2619.93	-181.49	-470.23	-659.18	1756866.11	14608037.73	40°13'21.0760"N	80°34'58.1812"W	809.71	234.498	0.91	0.87	-0.51



# Actual Wellpath Report

John Good Jr BRK 601H AWP Proj: 21182'  
Page 3 of 11



REFERENCE WELLPATH IDENTIFICATION			
Operator	SWN PRODUCTION COMPANY, LLC	Well	John Good JR BRK 601H
Field	Brooke	API/Legal	
Facility	John Good Jr BRK Pad	Wellbore	John Good Jr BRK 601H AWB
Slot	Slot #601H		

WELLPATH DATA (233 stations)															
MD [ft]	Inclination [°]	Azimuth [°]	TVD [ft]	Vert Sect [ft]	North [ft]	East [ft]	Grid East [US ft]	Grid North [US ft]	Latitude	Longitude	Closure Dist [ft]	Closure Dir [°]	DLS [°/100ft]	Build Rate [°/100ft]	Turn Rate [°/100ft]
2900.00	31.810	234.030	2704.67	-194.39	-501.90	-701.79	1756823.52	14608006.07	40°13'20.7650"N	80°34'58.7324"W	862.79	234.429	0.86	-0.52	1.29
3000.00	30.560	235.270	2790.22	-205.87	-531.86	-744.02	1756781.31	14607976.11	40°13'20.4709"N	80°34'59.2786"W	914.57	234.441	1.41	-1.25	1.24
3100.00	29.540	236.450	2876.78	-215.94	-559.97	-785.46	1756739.89	14607948.02	40°13'20.1950"N	80°34'59.8145"W	964.63	234.514	1.18	-1.02	1.18
3200.00	29.740	237.320	2963.70	-225.01	-586.99	-826.88	1756698.48	14607921.01	40°13'19.9300"N	80°35'0.3501"W	1014.04	234.630	0.47	0.20	0.87
3300.00	29.250	233.780	3050.74	-235.14	-614.82	-867.47	1756657.91	14607893.19	40°13'19.6568"N	80°35'0.8751"W	1063.25	234.673	1.81	-0.49	-3.54
3400.00	30.190	234.420	3137.59	-246.59	-643.88	-907.63	1756617.76	14607864.14	40°13'19.3715"N	80°35'1.3945"W	1112.82	234.648	0.99	0.94	0.64
3500.00	31.530	235.540	3223.43	-257.65	-673.31	-949.64	1756575.77	14607834.72	40°13'19.0826"N	80°35'1.9379"W	1164.11	234.663	1.46	1.34	1.12
3600.00	31.330	236.090	3308.76	-268.17	-702.61	-992.78	1756532.65	14607805.43	40°13'18.7951"N	80°35'2.4957"W	1216.25	234.712	0.35	-0.20	0.55
3700.00	30.680	232.560	3394.48	-279.85	-732.62	-1034.61	1756490.83	14607775.43	40°13'18.5004"N	80°35'3.0369"W	1267.74	234.697	1.93	-0.65	-3.53
3800.00	31.370	234.600	3480.17	-292.19	-763.21	-1076.09	1756449.37	14607744.85	40°13'18.2001"N	80°35'3.5734"W	1319.26	234.654	1.26	0.69	2.04
3900.00	31.510	234.480	3565.49	-303.85	-793.47	-1118.57	1756406.90	14607714.60	40°13'17.9030"N	80°35'4.1229"W	1371.42	234.650	0.15	0.14	-0.12
4000.00	31.170	235.120	3650.90	-315.24	-823.45	-1161.07	1756364.42	14607684.63	40°13'17.6087"N	80°35'4.6726"W	1423.43	234.655	0.48	-0.34	0.64
4100.00	31.310	235.470	3736.40	-326.16	-852.98	-1203.71	1756321.80	14607655.12	40°13'17.3189"N	80°35'5.2240"W	1475.29	234.678	0.23	0.14	0.35
4200.00	30.850	235.790	3822.04	-336.73	-882.13	-1246.32	1756279.20	14607625.98	40°13'17.0329"N	80°35'5.7750"W	1526.91	234.710	0.49	-0.46	0.32
4300.00	29.870	235.300	3908.33	-347.16	-910.72	-1288.00	1756237.54	14607597.40	40°13'16.7523"N	80°35'6.3140"W	1577.45	234.737	1.01	-0.98	-0.49
4400.00	30.260	235.720	3994.88	-357.52	-939.09	-1329.29	1756196.27	14607569.05	40°13'16.4738"N	80°35'6.8481"W	1627.54	234.760	0.44	0.39	0.42
4500.00	31.360	237.270	4080.76	-367.24	-967.35	-1372.00	1756153.57	14607540.80	40°13'16.1965"N	80°35'7.4004"W	1678.73	234.814	1.36	1.10	1.55
4600.00	29.680	233.790	4166.91	-377.69	-996.05	-1413.87	1756111.72	14607512.11	40°13'15.9149"N	80°35'7.9419"W	1729.49	234.836	2.44	-1.68	-3.48
4700.00	30.560	234.820	4253.41	-389.10	-1025.32	-1454.63	1756070.98	14607482.85	40°13'15.6275"N	80°35'8.4690"W	1779.67	234.821	1.02	0.88	1.03
4800.00	31.260	235.720	4339.21	-399.93	-1054.58	-1496.84	1756028.77	14607453.60	40°13'15.3403"N	80°35'9.0150"W	1831.03	234.834	0.84	0.70	0.90
4900.00	32.030	235.920	4424.34	-410.50	-1084.05	-1540.25	1755985.39	14607424.13	40°13'15.0510"N	80°35'9.5763"W	1883.49	234.861	0.78	0.77	0.20
5000.00	31.650	234.440	4509.29	-421.71	-1114.17	-1583.56	1755942.10	14607394.03	40°13'14.7554"N	80°35'10.1364"W	1936.24	234.870	0.87	-0.38	-1.48
5100.00	31.460	236.190	4594.51	-432.71	-1143.95	-1626.58	1755899.09	14607364.26	40°13'14.4631"N	80°35'10.6929"W	1988.57	234.882	0.94	-0.19	1.75
5200.00	32.290	238.720	4679.43	-441.86	-1172.34	-1671.10	1755854.59	14607335.88	40°13'14.1846"N	80°35'11.2684"W	2041.31	234.949	1.57	0.83	2.53
5300.00	30.990	235.770	4764.57	-451.13	-1200.69	-1715.21	1755810.49	14607307.54	40°13'13.9065"N	80°35'11.8388"W	2093.71	235.007	2.02	-1.30	-2.95
5400.00	29.310	232.030	4851.05	-462.85	-1230.24	-1755.80	1755769.92	14607278.00	40°13'13.6164"N	80°35'12.3638"W	2143.90	234.982	2.52	-1.68	-3.74
5500.00	29.410	234.920	4938.21	-474.69	-1259.41	-1795.19	1755730.54	14607248.84	40°13'13.3299"N	80°35'12.8733"W	2192.90	234.948	1.42	0.10	2.89
5600.00	28.910	235.630	5025.53	-484.97	-1287.17	-1835.24	1755690.51	14607221.10	40°13'13.0575"N	80°35'13.3912"W	2241.63	234.956	0.61	-0.50	0.71
5700.00	30.520	238.150	5112.38	-494.02	-1314.22	-1876.76	1755649.00	14607194.06	40°13'12.7921"N	80°35'13.9281"W	2291.16	234.998	2.04	1.61	2.52
5800.00	30.820	232.710	5198.41	-504.64	-1343.14	-1918.72	1755607.06	14607165.15	40°13'12.5082"N	80°35'14.4707"W	2342.12	235.007	2.79	0.30	-5.44

REFERENCE WELLPATH IDENTIFICATION			
Operator	SWN PRODUCTION COMPANY, LLC	Well	John Good JR BRK 601H
Field	Brooke	API/Legal	
Facility	John Good Jr BRK Pad	Wellbore	John Good Jr BRK 601H AWB
Slot	Slot #601H		

### WELLPATH DATA (233 stations)

MD [ft]	Inclination [°]	Azimuth [°]	TVD [ft]	Vert Sect [ft]	North [ft]	East [ft]	Grid East [US ft]	Grid North [US ft]	Latitude	Longitude	Closure Dist [ft]	Closure Dir [°]	DLS [°/100ft]	Build Rate [°/100ft]	Turn Rate [°/100ft]
5900.00	31.360	238.880	5284.07	-515.04	-1372.12	-1961.39	1755564.41	14607136.18	40°13'12.2238"N	80°35'15.0225"W	2393.69	235.025	3.23	0.54	6.17
6000.00	33.160	258.570	5368.86	-513.64	-1391.04	-2010.61	1755515.21	14607117.27	40°13'12.0391"N	80°35'15.6582"W	2444.90	235.323	10.62	1.80	19.69
6100.00	35.970	274.160	5451.37	-495.13	-1394.34	-2066.83	1755459.01	14607113.97	40°13'12.0091"N	80°35'16.3831"W	2493.18	235.995	9.26	2.81	15.59
6200.00	40.030	282.880	5530.21	-463.25	-1385.03	-2127.54	1755398.32	14607123.28	40°13'12.1039"N	80°35'17.1652"W	2538.65	236.936	6.72	4.06	8.72
6300.00	44.430	290.630	5604.29	-420.60	-1365.50	-2191.72	1755334.16	14607142.79	40°13'12.2997"N	80°35'17.9914"W	2582.30	238.076	6.81	4.40	7.75
6392.00	48.460	297.850	5667.71	-371.98	-1338.04	-2252.37	1755273.54	14607170.24	40°13'12.5739"N	80°35'18.7715"W	2619.83	239.287	7.17	4.38	7.85
6400.00	48.550	298.800	5673.01	-367.34	-1335.20	-2257.64	1755268.27	14607173.09	40°13'12.6022"N	80°35'18.8394"W	2622.92	239.399	8.97	1.12	11.87
6491.00	53.510	304.280	5730.25	-310.02	-1298.13	-2317.82	1755208.12	14607210.14	40°13'12.9713"N	80°35'19.6129"W	2656.58	240.748	7.18	5.45	6.02
6581.00	60.470	311.410	5779.30	-244.42	-1251.75	-2377.21	1755148.75	14607256.50	40°13'13.4323"N	80°35'20.3757"W	2686.63	242.230	10.19	7.73	7.92
6672.00	67.450	317.540	5819.25	-169.19	-1194.45	-2435.38	1755090.60	14607313.78	40°13'14.0012"N	80°35'21.1222"W	2712.53	243.874	9.77	7.67	6.74
6763.00	72.400	325.740	5850.52	-87.03	-1127.46	-2488.28	1755037.72	14607380.74	40°13'14.6656"N	80°35'21.8001"W	2731.79	245.624	10.06	5.44	9.01
6853.00	79.570	333.300	5872.34	-0.66	-1052.27	-2532.43	1754993.59	14607455.90	40°13'15.4106"N	80°35'22.3647"W	2742.35	247.436	11.39	7.97	8.40
6898.00	82.940	337.110	5879.18	43.77	-1011.91	-2551.07	1754974.96	14607496.25	40°13'15.8104"N	80°35'22.6026"W	2744.43	248.364	11.23	7.49	8.47
6944.00	86.770	338.350	5883.30	89.57	-969.52	-2568.43	1754957.61	14607538.63	40°13'16.2301"N	80°35'22.8239"W	2745.32	249.320	8.75	8.33	2.70
6989.00	90.150	338.310	5884.51	134.54	-927.72	-2585.03	1754941.00	14607580.41	40°13'16.6439"N	80°35'23.0355"W	2746.46	250.258	7.51	7.51	-0.09
7035.00	90.090	338.320	5884.42	180.54	-884.97	-2602.03	1754924.01	14607623.14	40°13'17.0670"N	80°35'23.2520"W	2748.41	251.216	0.13	-0.13	0.02
7126.00	90.400	338.420	5884.03	271.53	-800.38	-2635.57	1754890.48	14607707.70	40°13'17.9045"N	80°35'23.6794"W	2754.43	253.107	0.36	0.34	0.11
7218.00	90.030	338.920	5883.68	363.50	-714.69	-2669.04	1754857.03	14607793.36	40°13'18.7529"N	80°35'24.1057"W	2763.07	255.010	0.68	-0.40	0.54
7309.00	89.510	338.640	5884.05	454.48	-629.86	-2701.97	1754824.11	14607878.16	40°13'19.5926"N	80°35'24.5252"W	2774.42	256.878	0.65	-0.57	-0.31
7400.00	90.620	338.910	5883.94	545.45	-545.03	-2734.92	1754791.18	14607962.95	40°13'20.4324"N	80°35'24.9449"W	2788.70	258.729	1.26	1.22	0.30
7492.00	89.970	341.200	5883.47	637.35	-458.56	-2766.30	1754759.81	14608049.39	40°13'21.2883"N	80°35'25.3443"W	2804.05	260.588	2.59	-0.71	2.49
7583.00	90.150	340.380	5883.38	728.19	-372.62	-2796.24	1754729.88	14608135.29	40°13'22.1389"N	80°35'25.7252"W	2820.96	262.410	0.92	0.20	-0.90
7674.00	91.110	341.070	5882.37	819.04	-286.73	-2826.28	1754699.85	14608221.15	40°13'22.9890"N	80°35'26.1073"W	2840.79	264.207	1.30	1.05	0.76
7764.00	90.890	341.420	5880.80	908.83	-201.52	-2855.21	1754670.93	14608306.32	40°13'23.8323"N	80°35'26.4752"W	2862.31	265.963	0.46	-0.24	0.39
7855.00	90.680	340.850	5879.56	999.63	-115.42	-2884.63	1754641.52	14608392.39	40°13'24.6845"N	80°35'26.8493"W	2886.94	267.709	0.67	-0.23	-0.63
7946.00	90.800	340.760	5878.38	1090.47	-29.49	-2914.55	1754611.62	14608478.29	40°13'25.5351"N	80°35'27.2299"W	2914.70	269.420	0.16	0.13	-0.10
8037.00	90.680	341.320	5877.21	1181.28	56.57	-2944.11	1754582.07	14608564.32	40°13'26.3868"N	80°35'27.6059"W	2944.66	271.101	0.63	-0.13	0.62
8128.00	91.080	341.490	5875.81	1272.05	142.81	-2973.13	1754553.06	14608650.52	40°13'27.2403"N	80°35'27.9749"W	2976.55	272.750	0.48	0.44	0.19
8220.00	90.830	341.420	5874.28	1363.81	230.02	-3002.38	1754523.82	14608737.70	40°13'28.1035"N	80°35'28.3468"W	3011.18	274.381	0.28	-0.27	-0.08
8310.00	90.710	342.020	5873.07	1453.56	315.47	-3030.61	1754495.60	14608823.12	40°13'28.9492"N	80°35'28.7057"W	3046.98	275.943	0.68	-0.13	0.67

REFERENCE WELLPATH IDENTIFICATION			
Operator	SWN PRODUCTION COMPANY, LLC	Well	John Good JR BRK 601H
Field	Brooke	API/Legal	
Facility	John Good Jr BRK Pad	Wellbore	John Good Jr BRK 601H AWB
Slot	Slot #601H		

WELLPATH DATA (233 stations)																
MD [ft]	Inclination [°]	Azimuth [°]	TVD [ft]	Vert Sect [ft]	North [ft]	East [ft]	Grid East [US ft]	Grid North [US ft]	Latitude	Longitude	Closure Dist [ft]	Closure Dir [°]	DLS [°/100ft]	Build Rate [°/100ft]	Turn Rate [°/100ft]	
8402.00	90.400	340.420	5872.18	1545.35	402.56	-3060.23	1754466.00	14608910.18	40°13'29.8112"N	80°35'29.0823"W	3086.59	277.494	1.77	-0.34	-1.74	
8493.00	91.050	341.360	5871.02	1636.18	488.54	-3090.01	1754436.22	14608996.12	40°13'30.6621"N	80°35'29.4612"W	3128.40	278.984	1.26	0.71	1.03	
8583.00	90.950	341.750	5869.45	1725.93	573.90	-3118.49	1754407.76	14609081.45	40°13'31.5070"N	80°35'29.8232"W	3170.85	280.428	0.45	-0.11	0.43	
8674.00	90.770	341.740	5868.09	1816.67	660.31	-3146.99	1754379.27	14609167.83	40°13'32.3622"N	80°35'30.1855"W	3215.52	281.850	0.20	-0.20	-0.01	
8765.00	90.830	341.310	5866.82	1907.43	746.61	-3175.82	1754350.44	14609254.10	40°13'33.2163"N	80°35'30.5521"W	3262.40	283.230	0.48	0.07	-0.47	
8855.00	90.740	341.570	5865.58	1997.20	831.93	-3204.47	1754321.81	14609339.37	40°13'34.0606"N	80°35'30.9164"W	3310.70	284.554	0.31	-0.10	0.29	
8946.00	90.740	341.990	5864.41	2087.93	918.36	-3232.92	1754293.37	14609425.77	40°13'34.9160"N	80°35'31.2780"W	3360.82	285.858	0.46	0.00	0.46	
9037.00	90.370	341.650	5863.53	2178.66	1004.81	-3261.31	1754264.99	14609512.19	40°13'35.7716"N	80°35'31.6389"W	3412.59	287.124	0.55	-0.41	-0.37	
9127.00	90.180	338.650	5863.09	2268.55	1089.45	-3291.86	1754234.45	14609596.80	40°13'36.6094"N	80°35'32.0278"W	3467.46	288.312	3.34	-0.21	-3.33	
9218.00	91.970	339.740	5861.39	2359.49	1174.50	-3324.18	1754202.15	14609681.81	40°13'37.4513"N	80°35'32.4394"W	3525.56	289.459	2.30	1.97	1.20	
9309.00	90.650	340.000	5859.31	2450.38	1259.91	-3355.49	1754170.85	14609767.20	40°13'38.2968"N	80°35'32.8380"W	3584.23	290.580	1.48	-1.45	0.29	
9399.00	90.580	340.000	5858.34	2540.29	1344.48	-3386.27	1754140.08	14609851.73	40°13'39.1339"N	80°35'33.2298"W	3643.41	291.655	0.08	-0.08	0.00	
9491.00	90.800	340.070	5857.23	2632.19	1430.95	-3417.68	1754108.68	14609938.16	40°13'39.9897"N	80°35'33.6297"W	3705.15	292.719	0.25	0.24	0.08	
9583.00	90.550	339.900	5856.15	2724.09	1517.38	-3449.16	1754077.21	14610024.57	40°13'40.8453"N	80°35'34.0305"W	3768.18	293.746	0.33	-0.27	-0.18	
9673.00	90.680	339.760	5855.18	2814.01	1601.86	-3480.20	1754046.19	14610109.01	40°13'41.6815"N	80°35'34.4256"W	3831.15	294.716	0.21	0.14	-0.16	
9764.00	89.880	339.230	5854.74	2904.95	1687.09	-3512.07	1754014.33	14610194.21	40°13'42.5252"N	80°35'34.8315"W	3896.27	295.658	1.05	-0.88	-0.58	
9855.00	90.620	339.350	5854.34	2995.90	1772.21	-3544.25	1753982.16	14610279.30	40°13'43.3678"N	80°35'35.2413"W	3962.63	296.566	0.82	0.81	0.13	
9947.00	91.820	340.350	5852.38	3087.80	1858.56	-3575.94	1753950.49	14610365.61	40°13'44.2225"N	80°35'35.6447"W	4030.08	297.463	1.70	1.30	1.09	
10039.00	90.310	340.920	5850.67	3179.63	1945.33	-3606.43	1753920.00	14610452.35	40°13'45.0814"N	80°35'36.0328"W	4097.65	298.343	1.75	-1.64	0.62	
10130.00	90.250	339.720	5850.23	3270.52	2031.02	-3637.08	1753889.37	14610538.00	40°13'45.9295"N	80°35'36.4228"W	4165.74	299.180	1.32	-0.07	-1.32	
10220.00	89.780	339.080	5850.20	3360.46	2115.26	-3668.75	1753857.71	14610622.21	40°13'46.7634"N	80°35'36.8261"W	4234.86	299.966	0.88	-0.52	-0.71	
10311.00	92.400	341.060	5848.47	3451.34	2200.78	-3699.76	1753826.71	14610707.70	40°13'47.6099"N	80°35'37.2209"W	4304.84	300.746	3.61	2.88	2.18	
10402.00	89.450	338.210	5847.00	3542.24	2286.07	-3731.41	1753795.07	14610792.95	40°13'48.4541"N	80°35'37.6240"W	4376.02	301.494	4.51	-3.24	-3.13	
10494.00	93.170	341.160	5844.90	3634.12	2372.30	-3763.34	1753763.16	14610879.15	40°13'49.3076"N	80°35'38.0305"W	4448.65	302.226	5.16	4.04	3.21	
10585.00	89.850	339.960	5842.50	3724.94	2458.06	-3793.61	1753732.90	14610964.88	40°13'50.1566"N	80°35'38.4158"W	4520.35	302.941	3.88	-3.65	-1.32	
10676.00	90.580	340.120	5842.16	3815.85	2543.60	-3824.67	1753701.84	14611050.38	40°13'51.0032"N	80°35'38.8112"W	4593.26	303.626	0.82	0.80	0.18	
10767.00	90.770	340.100	5841.09	3906.74	2629.16	-3855.63	1753670.90	14611135.92	40°13'51.8501"N	80°35'39.2053"W	4666.73	304.290	0.21	0.21	-0.02	
10859.00	90.980	340.430	5839.68	3998.62	2715.75	-3886.69	1753639.85	14611222.47	40°13'52.7072"N	80°35'39.6007"W	4741.48	304.943	0.43	0.23	0.36	
10950.00	90.950	340.030	5838.15	4089.50	2801.37	-3917.47	1753609.08	14611308.06	40°13'53.5547"N	80°35'39.9924"W	4816.04	305.568	0.44	-0.03	-0.44	
11040.00	91.020	340.160	5836.60	4179.39	2885.98	-3948.11	1753578.46	14611392.64	40°13'54.3922"N	80°35'40.3825"W	4890.44	306.166	0.16	0.08	0.14	

## REFERENCE WELLPATH IDENTIFICATION

Operator	SWN PRODUCTION COMPANY, LLC	Well	John Good JR BRK 601H
Field	Brooke	API/Legal	
Facility	John Good Jr BRK Pad	Wellbore	John Good Jr BRK 601H AWP
Slot	Slot #601H		

## WELLPATH DATA (233 stations)

MD [ft]	Inclination [°]	Azimuth [°]	TVD [ft]	Vert Sect [ft]	North [ft]	East [ft]	Grid East [US ft]	Grid North [US ft]	Latitude	Longitude	Closure Dist [ft]	Closure Dir [°]	DLS [°/100ft]	Build Rate [°/100ft]	Turn Rate [°/100ft]
11131.00	91.050	340.370	5834.96	4270.27	2971.62	-3978.83	1753547.75	14611478.25	40°13'55.2398"N	80°35'40.7735"W	4966.05	306.755	0.23	0.03	0.23
11221.00	90.860	340.230	5833.46	4360.14	3056.34	-4009.16	1753517.43	14611562.93	40°13'56.0784"N	80°35'41.1596"W	5041.29	307.320	0.26	-0.21	-0.16
11312.00	90.770	340.050	5832.17	4451.03	3141.92	-4040.08	1753486.53	14611648.48	40°13'56.9255"N	80°35'41.5532"W	5118.00	307.872	0.22	-0.10	-0.20
11405.00	90.830	340.080	5830.87	4543.93	3229.34	-4071.78	1753454.83	14611735.86	40°13'57.7908"N	80°35'41.9568"W	5196.93	308.418	0.07	0.06	0.03
11495.00	90.890	339.780	5829.52	4633.83	3313.87	-4102.66	1753423.96	14611820.36	40°13'58.6274"N	80°35'42.3500"W	5273.86	308.929	0.34	0.07	-0.33
11587.00	90.800	339.880	5828.16	4725.75	3400.22	-4134.38	1753392.26	14611906.67	40°13'59.4821"N	80°35'42.7539"W	5353.00	309.435	0.15	-0.10	0.11
11677.00	90.740	339.860	5826.95	4815.66	3484.71	-4165.35	1753361.30	14611991.13	40°14'0.3185"N	80°35'43.1482"W	5430.78	309.916	0.07	-0.07	-0.02
11769.00	90.710	339.730	5825.79	4907.57	3571.04	-4197.12	1753329.54	14612077.43	40°14'1.1730"N	80°35'43.5528"W	5510.73	310.392	0.15	-0.03	-0.14
11859.00	90.920	340.040	5824.51	4997.48	3655.54	-4228.07	1753298.60	14612161.90	40°14'2.0095"N	80°35'43.9469"W	5589.24	310.846	0.42	0.23	0.34
11950.00	90.890	339.960	5823.07	5088.38	3741.05	-4259.19	1753267.49	14612247.37	40°14'2.8558"N	80°35'44.3431"W	5668.87	311.294	0.09	-0.03	-0.09
12041.00	90.800	340.150	5821.73	5179.28	3826.58	-4290.23	1753236.47	14612332.87	40°14'3.7024"N	80°35'44.7383"W	5748.81	311.731	0.23	-0.10	0.21
12132.00	90.800	340.080	5820.46	5270.17	3912.14	-4321.18	1753205.53	14612418.40	40°14'4.5493"N	80°35'45.1323"W	5829.02	312.156	0.08	0.00	-0.08
12223.00	90.710	340.100	5819.26	5361.06	3997.70	-4352.17	1753174.55	14612503.92	40°14'5.3962"N	80°35'45.5268"W	5909.56	312.569	0.10	-0.10	0.02
12314.00	90.770	340.010	5818.08	5451.96	4083.23	-4383.21	1753143.53	14612589.42	40°14'6.2428"N	80°35'45.9220"W	5990.43	312.971	0.12	0.07	-0.10
12405.00	90.860	340.220	5816.79	5542.86	4168.80	-4414.15	1753112.59	14612674.96	40°14'7.0897"N	80°35'46.3160"W	6071.54	313.363	0.25	0.10	0.23
12498.00	91.020	340.330	5815.26	5635.73	4256.33	-4445.54	1753081.22	14612762.45	40°14'7.9561"N	80°35'46.7156"W	6154.60	313.754	0.21	0.17	0.12
12589.00	90.950	341.220	5813.70	5726.56	4342.24	-4475.50	1753051.27	14612848.33	40°14'8.8064"N	80°35'47.0968"W	6235.79	314.134	0.98	-0.08	0.98
12680.00	91.140	341.110	5812.04	5817.36	4428.35	-4504.87	1753021.91	14612934.41	40°14'9.6587"N	80°35'47.4705"W	6316.98	314.509	0.24	0.21	-0.12
12771.00	90.950	341.300	5810.38	5908.15	4514.49	-4534.19	1752992.61	14613020.51	40°14'10.5112"N	80°35'47.8434"W	6398.39	314.875	0.30	-0.21	0.21
12861.00	91.110	341.680	5808.76	5997.91	4599.82	-4562.75	1752964.05	14613105.81	40°14'11.3557"N	80°35'48.2068"W	6478.97	315.232	0.46	0.18	0.42
12951.00	91.020	339.850	5807.09	6087.74	4684.77	-4592.40	1752934.42	14613190.73	40°14'12.1965"N	80°35'48.5840"W	6560.28	315.571	2.04	-0.10	-2.03
13040.00	91.600	337.240	5805.05	6176.69	4767.58	-4624.94	1752901.89	14613273.51	40°14'13.0162"N	80°35'48.9988"W	6642.28	315.870	3.00	0.65	-2.93
13129.00	90.950	336.900	5803.07	6265.66	4849.52	-4659.61	1752867.23	14613355.42	40°14'13.8276"N	80°35'49.4410"W	6725.31	316.144	0.82	-0.73	-0.38
13219.00	90.950	334.910	5801.58	6355.62	4931.67	-4696.34	1752830.51	14613437.53	40°14'14.6410"N	80°35'49.9098"W	6810.06	316.400	2.21	0.00	-2.21
13311.00	90.680	334.600	5800.27	6447.50	5014.87	-4735.57	1752791.30	14613520.70	40°14'15.4649"N	80°35'50.4108"W	6897.43	316.641	0.45	-0.29	-0.34
13401.00	91.170	334.890	5798.82	6537.39	5096.26	-4773.97	1752752.92	14613602.06	40°14'16.2709"N	80°35'50.9011"W	6983.02	316.870	0.63	0.54	0.32
13490.00	90.770	334.910	5797.31	6626.29	5176.84	-4811.72	1752715.18	14613682.61	40°14'17.0689"N	80°35'51.3832"W	7067.69	317.093	0.45	-0.45	0.02
13581.00	90.650	334.640	5796.18	6717.18	5259.16	-4850.49	1752676.42	14613764.90	40°14'17.8841"N	80°35'51.8784"W	7154.44	317.315	0.32	-0.13	-0.30
13671.00	90.920	334.730	5794.95	6807.07	5340.51	-4888.97	1752637.95	14613846.21	40°14'18.6897"N	80°35'52.3698"W	7240.38	317.527	0.32	0.30	0.10
13763.00	91.170	334.760	5793.27	6898.95	5423.70	-4928.22	1752598.72	14613929.38	40°14'19.5135"N	80°35'52.8710"W	7328.29	317.740	0.27	0.27	0.03



# Actual Wellpath Report

John Good Jr BRK 601H AWP Proj: 21182'  
Page 7 of 11



## REFERENCE WELLPATH IDENTIFICATION

Operator	SWN PRODUCTION COMPANY, LLC	Well	John Good JR BRK 601H
Field	Brooke	API/Legal	
Facility	John Good Jr BRK Pad	Wellbore	John Good Jr BRK 601H AWB
Slot	Slot #601H		

## WELLPATH DATA (233 stations)

MD [ft]	Inclination [°]	Azimuth [°]	TVD [ft]	Vert Sect [ft]	North [ft]	East [ft]	Grid East [US ft]	Grid North [US ft]	Latitude	Longitude	Closure Dist [ft]	Closure Dir [°]	DLS [°/100ft]	Build Rate [°/100ft]	Turn Rate [°/100ft]
13854.00	90.950	336.200	5791.59	6989.88	5506.48	-4965.98	1752560.98	14614012.12	40°14'20.3332"N	80°35'53.3530"W	7415.00	317.955	1.60	-0.24	1.58
13944.00	90.890	335.790	5790.14	7079.84	5588.68	-5002.59	1752524.39	14614094.29	40°14'21.1472"N	80°35'53.8203"W	7500.62	318.167	0.46	-0.07	-0.46
14036.00	90.920	336.130	5788.69	7171.80	5672.69	-5040.06	1752486.93	14614178.27	40°14'21.9790"N	80°35'54.2986"W	7588.26	318.380	0.37	0.03	0.37
14127.00	90.740	336.260	5787.37	7262.77	5755.94	-5076.79	1752450.22	14614261.49	40°14'22.8033"N	80°35'54.7673"W	7674.93	318.587	0.24	-0.20	0.14
14217.00	89.850	335.230	5786.91	7352.72	5837.99	-5113.76	1752413.26	14614343.51	40°14'23.6158"N	80°35'55.2392"W	7760.97	318.783	1.51	-0.99	-1.14
14306.00	90.890	335.190	5786.34	7441.65	5918.79	-5151.07	1752375.96	14614424.27	40°14'24.4159"N	80°35'55.7157"W	7846.38	318.967	1.17	1.17	-0.04
14399.00	91.050	336.000	5784.76	7534.59	6003.47	-5189.49	1752337.55	14614508.92	40°14'25.2544"N	80°35'56.2062"W	7935.52	319.159	0.89	0.17	0.87
14492.00	90.770	335.960	5783.28	7627.55	6088.40	-5227.34	1752299.72	14614593.82	40°14'26.0954"N	80°35'56.6893"W	8024.57	319.351	0.30	-0.30	-0.04
14584.00	90.770	336.330	5782.05	7719.51	6172.54	-5264.55	1752262.53	14614677.92	40°14'26.9284"N	80°35'57.1641"W	8112.68	319.539	0.40	0.00	0.40
14675.00	90.740	335.810	5780.85	7810.48	6255.71	-5301.46	1752225.63	14614761.06	40°14'27.7520"N	80°35'57.6352"W	8199.96	319.720	0.57	-0.03	-0.57
14765.00	90.550	336.190	5779.84	7900.45	6337.92	-5338.06	1752189.04	14614843.24	40°14'28.5660"N	80°35'58.1025"W	8286.38	319.895	0.47	-0.21	0.42
14856.00	89.970	335.900	5779.42	7991.42	6421.08	-5375.01	1752152.11	14614926.37	40°14'29.3894"N	80°35'58.5740"W	8373.83	320.068	0.71	-0.64	-0.32
14947.00	90.220	336.030	5779.27	8082.39	6504.19	-5412.07	1752115.06	14615009.45	40°14'30.2124"N	80°35'59.0471"W	8461.38	320.237	0.31	0.27	0.14
15037.00	90.030	335.810	5779.08	8172.35	6586.36	-5448.79	1752078.35	14615091.58	40°14'31.0260"N	80°35'59.5159"W	8548.07	320.400	0.32	-0.21	-0.24
15126.00	90.520	335.710	5778.65	8261.31	6667.51	-5485.33	1752041.83	14615172.70	40°14'31.8295"N	80°35'59.9823"W	8633.92	320.556	0.56	0.55	-0.11
15217.00	91.780	335.280	5776.82	8352.24	6750.29	-5523.07	1752004.11	14615255.46	40°14'32.6493"N	80°36'0.4641"W	8721.85	320.710	1.46	1.38	-0.47
15308.00	91.050	336.430	5774.57	8443.17	6833.31	-5560.28	1751966.91	14615338.44	40°14'33.4712"N	80°36'0.9392"W	8809.70	320.865	1.50	-0.80	1.26
15400.00	91.020	336.360	5772.91	8535.14	6917.59	-5597.11	1751930.09	14615422.69	40°14'34.3058"N	80°36'1.4092"W	8898.36	321.023	0.08	-0.03	-0.08
15488.00	90.890	336.290	5771.45	8623.11	6998.18	-5632.44	1751894.77	14615503.24	40°14'35.1037"N	80°36'1.8602"W	8983.26	321.171	0.17	-0.15	-0.08
15577.00	90.950	336.550	5770.02	8712.09	7079.73	-5668.04	1751859.19	14615584.77	40°14'35.9112"N	80°36'2.3145"W	9069.14	321.319	0.30	0.07	0.29
15665.00	90.520	336.020	5768.89	8800.06	7160.30	-5703.43	1751823.81	14615665.30	40°14'36.7089"N	80°36'2.7662"W	9154.18	321.461	0.78	-0.49	-0.60
15757.00	90.980	336.400	5767.68	8892.03	7244.47	-5740.54	1751786.72	14615749.44	40°14'37.5423"N	80°36'3.2398"W	9243.17	321.607	0.65	0.50	0.41
15848.00	90.860	335.910	5766.22	8983.00	7327.69	-5777.32	1751749.95	14615832.63	40°14'38.3663"N	80°36'3.7093"W	9331.27	321.747	0.55	-0.13	-0.54
15939.00	90.490	335.740	5765.15	9073.95	7410.71	-5814.58	1751712.70	14615915.61	40°14'39.1883"N	80°36'4.1850"W	9419.55	321.882	0.45	-0.41	-0.19
16029.00	90.650	336.130	5764.26	9163.92	7492.88	-5851.28	1751676.02	14615997.75	40°14'40.0020"N	80°36'4.6535"W	9506.88	322.013	0.47	0.18	0.43
16120.00	90.770	335.720	5763.13	9254.88	7575.96	-5888.40	1751638.91	14616080.80	40°14'40.8246"N	80°36'5.1274"W	9595.23	322.144	0.47	0.13	-0.45
16210.00	90.430	335.820	5762.19	9344.84	7658.02	-5925.34	1751601.99	14616162.84	40°14'41.6372"N	80°36'5.5989"W	9682.71	322.269	0.39	-0.38	0.11
16302.00	89.820	335.440	5761.98	9436.79	7741.83	-5963.30	1751564.05	14616246.61	40°14'42.4670"N	80°36'6.0836"W	9772.25	322.394	0.78	-0.66	-0.41
16393.00	90.800	335.270	5761.49	9527.72	7824.53	-6001.24	1751526.12	14616329.28	40°14'43.2860"N	80°36'6.5681"W	9860.95	322.513	1.09	1.08	-0.19
16483.00	90.980	336.060	5760.09	9617.67	7906.53	-6038.32	1751489.05	14616411.24	40°14'44.0979"N	80°36'7.0416"W	9948.59	322.631	0.90	0.20	0.88



## REFERENCE WELLPATH IDENTIFICATION

Operator	SWN PRODUCTION COMPANY, LLC	Well	John Good JR BRK 601H
Field	Brooke	API/Legal	
Facility	John Good Jr BRK Pad	Wellbore	John Good Jr BRK 601H AWB
Slot	Slot #601H		

## WELLPATH DATA (233 stations)

MD [ft]	Inclination [°]	Azimuth [°]	TVD [ft]	Vert Sect [ft]	North [ft]	East [ft]	Grid East [US ft]	Grid North [US ft]	Latitude	Longitude	Closure Dist [ft]	Closure Dir [°]	DLS [°/100ft]	Build Rate [°/100ft]	Turn Rate [°/100ft]
16575.00	90.830	335.830	5758.64	9709.63	7990.53	-6075.82	1751451.57	14616495.21	40°14'44.9296"N	80°36'7.5203"W	10038.13	322.751	0.30	-0.16	-0.25
16666.00	90.830	335.730	5757.32	9800.58	8073.51	-6113.15	1751414.25	14616578.16	40°14'45.7513"N	80°36'7.9969"W	10126.80	322.868	0.11	0.00	-0.11
16757.00	90.830	335.840	5756.00	9891.53	8156.49	-6150.47	1751376.95	14616661.11	40°14'46.5730"N	80°36'8.4733"W	10215.51	322.982	0.12	0.00	0.12
16848.00	90.150	335.130	5755.23	9982.47	8239.29	-6188.23	1751339.21	14616743.87	40°14'47.3928"N	80°36'8.9555"W	10304.37	323.091	1.08	-0.75	-0.78
16940.00	90.890	336.180	5754.39	10074.42	8323.10	-6226.15	1751301.30	14616827.65	40°14'48.2227"N	80°36'9.4397"W	10394.18	323.201	1.40	0.80	1.14
17030.00	90.710	336.380	5753.14	10164.39	8405.49	-6262.35	1751265.11	14616910.01	40°14'49.0384"N	80°36'9.9018"W	10481.85	323.313	0.30	-0.20	0.22
17122.00	90.890	336.150	5751.85	10256.36	8489.70	-6299.38	1751228.10	14616994.19	40°14'49.8722"N	80°36'10.3744"W	10571.52	323.425	0.32	0.20	-0.25
17213.00	90.710	336.200	5750.58	10347.33	8572.94	-6336.13	1751191.36	14617077.39	40°14'50.6964"N	80°36'10.8436"W	10660.29	323.532	0.21	-0.20	0.05
17303.00	90.680	336.050	5749.49	10437.30	8655.23	-6372.56	1751154.95	14617159.65	40°14'51.5112"N	80°36'11.3086"W	10748.14	323.637	0.17	-0.03	-0.17
17394.00	90.770	335.890	5748.34	10528.27	8738.33	-6409.61	1751117.91	14617242.73	40°14'52.3341"N	80°36'11.7816"W	10837.05	323.740	0.20	0.10	-0.18
17486.00	90.890	336.140	5747.00	10620.23	8822.38	-6447.00	1751080.53	14617326.74	40°14'53.1663"N	80°36'12.2590"W	10926.95	323.842	0.30	0.13	0.27
17578.00	90.830	336.290	5745.62	10712.19	8906.56	-6484.10	1751043.44	14617410.89	40°14'53.9997"N	80°36'12.7326"W	11016.82	323.945	0.18	-0.07	0.16
17668.00	91.020	336.020	5744.17	10802.16	8988.87	-6520.48	1751007.08	14617493.16	40°14'54.8147"N	80°36'13.1970"W	11104.79	324.043	0.37	0.21	-0.30
17761.00	91.110	335.850	5742.44	10895.11	9073.77	-6558.40	1750969.18	14617578.03	40°14'55.6553"N	80°36'13.6811"W	11195.80	324.141	0.21	0.10	-0.18
17851.00	91.170	336.010	5740.65	10985.06	9155.93	-6595.10	1750932.49	14617660.16	40°14'56.4688"N	80°36'14.1497"W	11283.89	324.234	0.19	0.07	0.18
17941.00	90.920	335.850	5739.01	11075.02	9238.09	-6631.80	1750895.80	14617742.29	40°14'57.2823"N	80°36'14.6183"W	11372.03	324.326	0.33	-0.28	-0.18
18031.00	90.770	336.070	5737.68	11164.97	9320.27	-6668.46	1750859.16	14617824.44	40°14'58.0961"N	80°36'15.0863"W	11460.18	324.417	0.30	-0.17	0.24
18123.00	90.830	336.430	5736.40	11256.95	9404.47	-6705.51	1750822.12	14617908.61	40°14'58.9298"N	80°36'15.5593"W	11550.23	324.511	0.40	0.07	0.39
18213.00	89.970	335.070	5735.77	11346.90	9486.52	-6742.47	1750785.18	14617990.63	40°14'59.7422"N	80°36'16.0313"W	11638.52	324.597	1.79	-0.96	-1.51
18304.00	90.180	335.390	5735.65	11437.83	9569.15	-6780.60	1750747.06	14618073.23	40°15'0.5604"N	80°36'16.5182"W	11727.96	324.679	0.42	0.23	0.35
18397.00	91.140	336.220	5734.58	11530.79	9653.98	-6818.71	1750708.97	14618158.02	40°15'1.4003"N	80°36'17.0049"W	11819.22	324.766	1.36	1.03	0.89
18488.00	91.320	336.740	5732.63	11621.75	9737.40	-6855.01	1750672.67	14618241.40	40°15'2.2263"N	80°36'17.4683"W	11908.32	324.855	0.60	0.20	0.57
18579.00	90.150	335.990	5731.46	11712.73	9820.75	-6891.49	1750636.21	14618324.73	40°15'3.0516"N	80°36'17.9340"W	11997.49	324.942	1.53	-1.29	-0.82
18669.00	90.000	333.230	5731.34	11802.61	9902.05	-6930.08	1750597.64	14618406.00	40°15'3.8567"N	80°36'18.4270"W	12086.22	325.013	3.07	-0.17	-3.07
18760.00	90.250	333.700	5731.14	11893.39	9983.47	-6970.73	1750557.00	14618487.38	40°15'4.6630"N	80°36'18.9466"W	12176.24	325.076	0.59	0.27	0.52
18851.00	90.120	333.880	5730.85	11984.20	10065.11	-7010.92	1750516.82	14618568.99	40°15'5.4715"N	80°36'19.4602"W	12266.19	325.141	0.24	-0.14	0.20
18942.00	90.830	334.220	5730.09	12075.04	10146.93	-7050.74	1750477.02	14618650.78	40°15'6.2818"N	80°36'19.9691"W	12356.10	325.206	0.87	0.78	0.37
19034.00	90.150	334.420	5729.31	12166.89	10229.84	-7090.61	1750437.17	14618733.66	40°15'7.1029"N	80°36'20.4785"W	12446.94	325.273	0.77	-0.74	0.22
19124.00	90.650	334.200	5728.68	12256.76	10310.94	-7129.62	1750398.17	14618814.73	40°15'7.9060"N	80°36'20.9770"W	12535.83	325.338	0.61	0.56	-0.24
19216.00	90.430	333.960	5727.81	12348.59	10393.68	-7169.84	1750357.97	14618897.44	40°15'8.7254"N	80°36'21.4909"W	12626.76	325.401	0.35	-0.24	-0.26

**REFERENCE WELLPATH IDENTIFICATION**

Operator	SWN PRODUCTION COMPANY, LLC	Well	John Good JR BRK 601H
Field	Brooke	API/Legal	
Facility	John Good Jr BRK Pad	Wellbore	John Good Jr BRK 601H AWB
Slot	Slot #601H		

**WELLPATH DATA (233 stations) † = interpolated, ‡ = extrapolated station**

MD [ft]	Inclination [°]	Azimuth [°]	TVD [ft]	Vert Sect [ft]	North [ft]	East [ft]	Grid East [US ft]	Grid North [US ft]	Latitude	Longitude	Closure Dist [ft]	Closure Dir [°]	DLS [°/100ft]	Build Rate [°/100ft]	Turn Rate [°/100ft]
19307.00	90.340	333.870	5727.20	12439.42	10475.41	-7209.85	1750317.98	14618979.14	40°15'9.5348"N	80°36'22.0022"W	12716.77	325.462	0.14	-0.10	-0.10
19397.00	90.180	333.800	5726.79	12529.24	10556.19	-7249.53	1750278.31	14619059.88	40°15'10.3348"N	80°36'22.5095"W	12805.81	325.520	0.19	-0.18	-0.08
19488.00	90.220	333.810	5726.47	12620.05	10637.84	-7289.70	1750238.15	14619141.50	40°15'11.1434"N	80°36'23.0229"W	12895.87	325.579	0.05	0.04	0.01
19579.00	90.370	333.700	5726.01	12710.86	10719.46	-7329.94	1750197.93	14619223.09	40°15'11.9517"N	80°36'23.5372"W	12985.95	325.636	0.20	0.16	-0.12
19670.00	90.550	333.700	5725.28	12801.67	10801.04	-7370.26	1750157.62	14619304.64	40°15'12.7596"N	80°36'24.0525"W	13076.05	325.692	0.20	0.20	0.00
19762.00	90.680	334.100	5724.29	12893.48	10883.65	-7410.73	1750117.17	14619387.22	40°15'13.5778"N	80°36'24.5698"W	13167.11	325.749	0.46	0.14	0.43
19853.00	90.740	334.180	5723.16	12984.32	10965.53	-7450.42	1750077.50	14619469.07	40°15'14.3886"N	80°36'25.0770"W	13257.14	325.806	0.11	0.07	0.09
19946.00	90.430	333.930	5722.21	13077.16	11049.15	-7491.11	1750036.82	14619552.66	40°15'15.2168"N	80°36'25.5969"W	13349.18	325.864	0.43	-0.33	-0.27
20036.00	90.250	334.160	5721.68	13167.00	11130.08	-7530.50	1749997.45	14619633.55	40°15'16.0181"N	80°36'26.1003"W	13438.27	325.918	0.32	-0.20	0.26
20127.00	89.850	333.500	5721.60	13257.81	11211.75	-7570.63	1749957.33	14619715.19	40°15'16.8269"N	80°36'26.6133"W	13528.40	325.971	0.85	-0.44	-0.73
20218.00	89.910	333.640	5721.79	13348.60	11293.23	-7611.14	1749916.84	14619796.64	40°15'17.6340"N	80°36'27.1311"W	13618.61	326.022	0.17	0.07	0.15
20308.00	90.770	334.060	5721.25	13438.42	11374.02	-7650.80	1749877.20	14619877.40	40°15'18.4340"N	80°36'27.6380"W	13707.77	326.073	1.06	0.96	0.47
20399.00	90.120	333.630	5720.55	13529.24	11455.70	-7690.91	1749837.10	14619959.04	40°15'19.2429"N	80°36'28.1507"W	13797.94	326.124	0.86	-0.71	-0.47
20491.00	89.970	333.270	5720.47	13621.02	11538.00	-7732.03	1749795.99	14620041.31	40°15'20.0579"N	80°36'28.6764"W	13889.19	326.173	0.42	-0.16	-0.39
20582.00	90.400	333.450	5720.18	13711.78	11619.34	-7772.84	1749755.21	14620122.62	40°15'20.8635"N	80°36'29.1980"W	13979.48	326.219	0.51	0.47	0.20
20674.00	90.400	333.740	5719.54	13803.57	11701.74	-7813.75	1749714.31	14620204.99	40°15'21.6795"N	80°36'29.7210"W	14070.72	326.267	0.32	0.00	0.32
20764.00	90.220	333.870	5719.05	13893.39	11782.49	-7853.48	1749674.60	14620285.71	40°15'22.4793"N	80°36'30.2288"W	14159.95	326.315	0.25	-0.20	0.14
20855.00	90.340	333.890	5718.61	13984.21	11864.20	-7893.54	1749634.55	14620367.38	40°15'23.2884"N	80°36'30.7409"W	14250.16	326.363	0.13	0.13	0.02
20946.00	90.370	333.540	5718.04	14075.02	11945.79	-7933.84	1749594.27	14620448.94	40°15'24.0964"N	80°36'31.2560"W	14340.42	326.410	0.39	0.03	-0.38
21036.00	89.940	333.780	5717.80	14164.82	12026.44	-7973.77	1749554.35	14620529.57	40°15'24.8952"N	80°36'31.7664"W	14429.70	326.455	0.55	-0.48	0.27
21127.00	90.490	333.960	5717.46	14255.64	12108.14	-8013.85	1749514.29	14620611.23	40°15'25.7043"N	80°36'32.2787"W	14519.94	326.501	0.64	0.60	0.20
21157.00	90.680	333.550	5717.15	14285.58	12135.05	-8027.11	1749501.03	14620638.13	40°15'25.9707"N	80°36'32.4483"W	14549.70	326.516	1.51	0.63	-1.37
21182.00‡	90.680	333.550	5716.86	14310.52	12157.43	-8038.25	1749489.90	14620660.50	40°15'26.1924"N	80°36'32.5906"W	14574.51	326.528	0.00	0.00	0.00

**REFERENCE WELLPATH IDENTIFICATION**

Operator	SWN PRODUCTION COMPANY, LLC	Well	John Good JR BRK 601H
Field	Brooke	API/Legal	
Facility	John Good Jr BRK Pad	Wellbore	John Good Jr BRK 601H AWB
Slot	Slot #601H		

**HOLE & CASING SECTIONS - Ref Wellbore: John Good Jr BRK 601H AWB Ref Wellpath: John Good Jr BRK 601H AWP Proj: 21182'**

String/Diameter	Start MD [ft]	End MD [ft]	Interval [ft]	Start TVD [ft]	End TVD [ft]	Start N/S [ft]	Start E/W [ft]	End N/S [ft]	End E/W [ft]
20in Conductor	26.00	126.00	100.00	26.00	126.00	0.00	0.00	-0.23	-0.08
17.5in Open Hole	126.00	384.00	258.00	126.00	384.00	-0.23	-0.08	-0.39	-0.89
13.375in Casing Surface	26.00	384.00	358.00	26.00	384.00	0.00	0.00	-0.39	-0.89
12.25in Open Hole	384.00	1660.00	1276.00	384.00	1626.00	-0.39	-0.89	-154.40	-206.26
9.625in Casing Intermediate	26.00	1660.00	1634.00	26.00	1626.00	0.00	0.00	-154.40	-206.26
8.75in Open Hole	1660.00	6650.00	4990.00	1626.00	5810.51	-154.40	-206.26	-1209.18	-2421.57
8.5in Open Hole	6650.00	21182.00	14532.00	5810.51	5716.86	-1209.18	-2421.57	12157.43	-8038.25
5.5in Casing Production	26.00	21182.00	21156.00	26.00	5716.86	0.00	0.00	12157.43	-8038.25

**TARGETS**

Name	TVD [ft]	North [ft]	East [ft]	Grid East [US ft]	Grid North [US ft]	Latitude	Longitude	Shape
John Good JR BRK 601H BHL Rev-3	5730.43	12161.45	-8029.81	1749498.33	14620664.53	40°15'26.2318"N	80°36'32.4816"W	point
John Good JR BRK 601H LP Rev-4	5878.00	-834.63	-2633.70	1754892.36	14607673.47	40°13'17.5660"N	80°35'23.6573"W	point

**WELLPATH COMPOSITION - Ref Wellbore: John Good Jr BRK 601H AWB Ref Wellpath: John Good Jr BRK 601H AWP Proj: 21182'**

Start MD [ft]	End MD [ft]	Positional Uncertainty Model	Log Name/Comment	Wellbore	Survey Date
26.00	300.00	Gyrodata 2015 - GC+WIR+DPIPE	05 Gyrodata <17-1/2"> (100'-300')	John Good Jr BRK 601H AWB	6/8/2021
300.00	1600.00	Gyrodata 2015 - GC+WIR+DPIPE	06 Gyrodata <12-1/4"> (400'-1600')	John Good Jr BRK 601H AWB	6/8/2021
1600.00	6392.00	Gyrodata 2015 - GC+WIR+DPIPE	07 Gyrodata <8-3/4"> (1700'-6392')	John Good Jr BRK 601H AWB	6/8/2021
6392.00	21182.00	BH AutoTrak Curve/eXpress (2019) (HRGM, Short spacing)	08 BH AT Curve <8-1/2"> (6400'-21157')	John Good Jr BRK 601H AWB	6/8/2021

REFERENCE WELLPATH IDENTIFICATION			
Operator	SWN PRODUCTION COMPANY, LLC	Well	John Good JR BRK 601H
Field	Brooke	API/Legal	
Facility	John Good Jr BRK Pad	Wellbore	John Good Jr BRK 601H AWB
Slot	Slot #601H		

COMMENTS
<p><b>Wellpath general comments</b>            API: 47-009-00324-0000            BH Job #: 110870156            Rig: SDC 40            Duration: 06/07/2021 - 06/10/2021</p>