

SWN PRODUCTION COMPANY, LLC

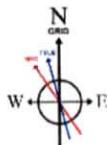
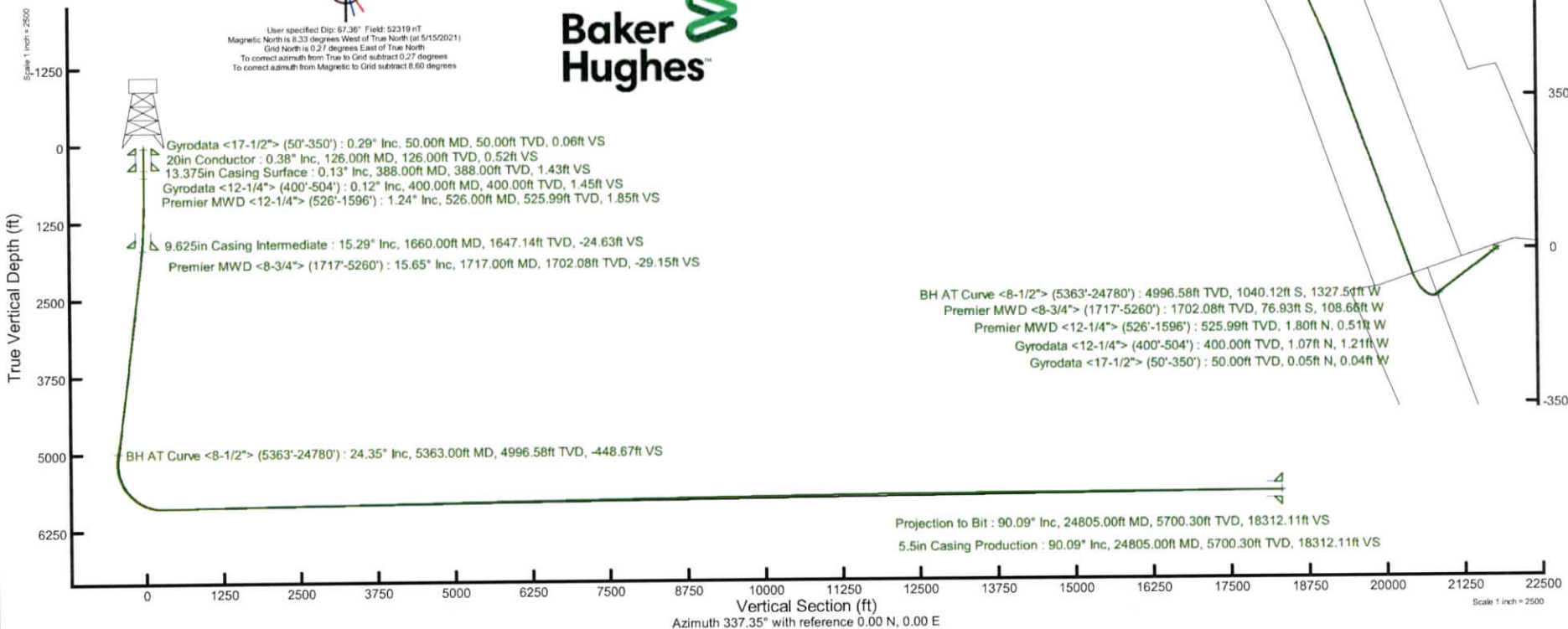
Location: Brooke County, WV Slot: Slot #401H
 Field: Brooke Well: John Good Jr BRK 401H
 Facility: John Good Jr BRK Pad Wellbore: John Good Jr BRK 401H PWB

Plot reference wellpath is John Good Jr BRK 401H PWB Rev-B.0	Grid System: NAD83 / UTM Zone 17 North, US feet
True vertical depths are referenced to SDC 40 (KB)	North Reference: Grid north
Reference wellpath measured depths are referenced to SDC 40 (KB)	Scale: True distance
SDC 40 (KB) to Mean Sea Level: 1179.4 feet	Coordinates are in feet referenced to Slot
Mean Sea Level to Ground level (At Slot: Slot #401H): -1153.4 feet	Depths are in feet
Offset wellpath MDs are referenced to each path's default MD datum	Created by: a1erjen on 2021-05-28; Database: WA_MPL_EASTERNUS_Def

Location Information

Facility Name	Grid East (US ft)	Grid North (US ft)	Latitude	Longitude		
John Good Jr BRK Pad	1757463.232	14608504.851	40°13'25.6660"N	80°34'50.4520"W		
Slot	Local N (ft)	Local E (ft)	Grid East (US ft)	Grid North (US ft)	Latitude	Longitude
Slot #401H	-6.62	64.65	1757527.860	14608498.230	40°13'25.5975"N	80°34'49.6189"W
SDC 40 (KB) to Ground level (At Slot: Slot #401H)						26ft
Mean Sea Level to Ground level (At Slot: Slot #401H)						-1153.4ft
SDC 40 (KB) to Mean Sea Level						1179.4ft

API: 47-009-00327-0000
 BH Job #: 110870166
 Rig: SDC 40
 Duration: 05/21/2021 - 05/26/2021



User specified Dip: 67.36° Field: 52319 nT
 Magnetic North is 8.33 degrees West of True North (at 5/15/2021)
 Grid North is 0.27 degrees East of True North
 To correct azimuth from True to Grid subtract 0.27 degrees
 To correct azimuth from Magnetic to Grid subtract 8.60 degrees

Projection to Bit : 90.09° Inc, 24805.00ft MD, 5700.30ft TVD, 18312.11ft VS
 5.5in Casing Production : 90.09° Inc, 24805.00ft MD, 5700.30ft TVD, 18312.11ft VS

Azimuth 337.35° with reference 0.00 N, 0.00 E



Actual Wellpath Report

John Good Jr BRK 401H AWP Proj: 24805'
Page 1 of 14



REFERENCE WELLPATH IDENTIFICATION			
Operator	SWN PRODUCTION COMPANY, LLC	Well	John Good Jr BRK 401H
Field	Brooke	API/Legal	
Facility	John Good Jr BRK Pad	Wellbore	John Good Jr BRK 401H AWB
Slot	Slot #401H		

REPORT SETUP INFORMATION			
Projection System	NAD83 / UTM Zone 17 North, US feet	Software System	WellArchitect® 6.0
North Reference	Grid	User	Atenjen
Scale	0.999616	Report Generated	5/28/2021 at 5:06:45 PM
Convergence at slot	0.27° East	Database	WA_MPL_EASTERNUS_Defn

WELLPATH LOCATION						
	Local coordinates		Grid coordinates		Geographic coordinates	
	North[ft]	East[ft]	Easting[US ft]	Northing[US ft]	Latitude	Longitude
Slot Location	-6.62	64.65	1757527.86	14608498.23	40°13'25.5975"N	80°34'49.6189"W
Facility Reference Pt			1757463.23	14608504.85	40°13'25.6660"N	80°34'50.4520"W
Field Reference Pt			0.00	0.00	0°00'0.0000"	85°29'19.4780"W

WELLPATH DATUM			
Calculation method	Minimum curvature	SDC 40 (KB) to Facility Vertical Datum	1179.40ft
Horizontal Reference Pt	Slot	SDC 40 (KB) to Mean Sea Level	1179.40ft
Vertical Reference Pt	SDC 40 (KB)	SDC 40 (KB) to Ground Level at Slot (Slot #401H)	26.00ft
MD Reference Pt	SDC 40 (KB)	Section Origin	N 0.00, E 0.00 ft
Field Vertical Reference	Mean Sea Level	Section Azimuth	337.35°



Actual Wellpath Report

John Good Jr BRK 401H AWP Proj: 24805'
Page 2 of 14



REFERENCE WELLPATH IDENTIFICATION			
Operator	SWN PRODUCTION COMPANY, LLC	Well	John Good Jr BRK 401H
Field	Brooke	API/Legal	
Facility	John Good Jr BRK Pad	Wellbore	John Good Jr BRK 401H AWB
Slot	Slot #401H		

WELLPATH DATA (289 stations) † = interpolated, ‡ = extrapolated station															
MD [ft]	Inclination [°]	Azimuth [°]	TVD [ft]	Vert Sect [ft]	North [ft]	East [ft]	Grid East [US ft]	Grid North [US ft]	Latitude	Longitude	Closure Dist [ft]	Closure Dir [°]	DLS [°/100ft]	Build Rate [°/100ft]	Turn Rate [°/100ft]
0.00†	0.000	321.710	0.00	0.00	0.00	0.00	1757527.86	14608498.23	40°13'25.5975"N	80°34'49.6189"W	0.00	0.000	0.00	0.00	0.00
26.00	0.000	321.710	26.00	0.00	0.00	0.00	1757527.86	14608498.23	40°13'25.5975"N	80°34'49.6189"W	0.00	0.000	0.00	0.00	0.00
50.00	0.290	321.710	50.00	0.06	0.05	-0.04	1757527.82	14608498.28	40°13'25.5980"N	80°34'49.6194"W	0.06	321.710	1.21	1.21	0.00
75.00	0.400	320.170	75.00	0.20	0.16	-0.13	1757527.73	14608498.39	40°13'25.5992"N	80°34'49.6206"W	0.21	321.074	0.44	0.44	-6.16
100.00	0.390	314.380	100.00	0.36	0.29	-0.25	1757527.61	14608498.52	40°13'25.6004"N	80°34'49.6221"W	0.38	319.385	0.16	-0.04	-23.16
125.00	0.380	311.810	125.00	0.52	0.41	-0.37	1757527.49	14608498.64	40°13'25.6016"N	80°34'49.6237"W	0.55	317.474	0.08	-0.04	-10.28
150.00	0.360	305.480	150.00	0.66	0.51	-0.50	1757527.36	14608498.74	40°13'25.6026"N	80°34'49.6253"W	0.71	315.497	0.18	-0.08	-25.32
175.00	0.170	341.490	175.00	0.76	0.59	-0.57	1757527.29	14608498.82	40°13'25.6034"N	80°34'49.6263"W	0.82	315.678	0.98	-0.76	144.04
200.00	0.210	344.470	200.00	0.85	0.67	-0.60	1757527.26	14608498.90	40°13'25.6041"N	80°34'49.6266"W	0.90	318.125	0.16	0.16	11.92
225.00	0.240	324.920	225.00	0.94	0.75	-0.64	1757527.22	14608498.98	40°13'25.6050"N	80°34'49.6271"W	0.99	319.662	0.33	0.12	-78.20
250.00	0.320	318.540	250.00	1.06	0.85	-0.72	1757527.14	14608499.08	40°13'25.6059"N	80°34'49.6281"W	1.11	319.839	0.34	0.32	-25.52
275.00	0.230	293.180	275.00	1.16	0.92	-0.81	1757527.05	14608499.15	40°13'25.6067"N	80°34'49.6293"W	1.23	318.712	0.60	-0.36	-101.44
300.00	0.140	285.740	300.00	1.22	0.95	-0.88	1757526.98	14608499.18	40°13'25.6069"N	80°34'49.6303"W	1.30	317.022	0.37	-0.36	-29.76
322.00	0.360	274.630	322.00	1.26	0.96	-0.98	1757526.88	14608499.19	40°13'25.6071"N	80°34'49.6315"W	1.37	314.493	1.02	1.00	-50.50
350.00	0.190	294.880	350.00	1.34	0.99	-1.11	1757526.75	14608499.22	40°13'25.6073"N	80°34'49.6332"W	1.49	311.716	0.69	-0.61	72.32
400.00	0.120	325.560	400.00	1.45	1.07	-1.21	1757526.65	14608499.30	40°13'25.6081"N	80°34'49.6345"W	1.62	311.309	0.21	-0.14	61.36
412.00	0.210	299.550	412.00	1.48	1.09	-1.24	1757526.62	14608499.32	40°13'25.6083"N	80°34'49.6348"W	1.65	311.260	0.96	0.75	-216.75
450.00	0.410	36.060	450.00	1.61	1.23	-1.22	1757526.64	14608499.46	40°13'25.6098"N	80°34'49.6346"W	1.73	315.271	1.27	0.53	253.97
500.00	0.700	53.680	499.99	1.77	1.56	-0.87	1757526.99	14608499.79	40°13'25.6130"N	80°34'49.6300"W	1.78	330.842	0.67	0.58	35.24
504.00	0.740	52.290	503.99	1.78	1.59	-0.83	1757527.03	14608499.82	40°13'25.6133"N	80°34'49.6295"W	1.79	332.435	1.09	1.00	-34.75
526.00	1.240	59.260	525.99	1.85	1.80	-0.51	1757527.35	14608500.03	40°13'25.6153"N	80°34'49.6254"W	1.87	344.097	2.33	2.27	31.68
616.00	2.570	51.620	615.94	2.54	3.55	1.91	1757529.77	14608501.78	40°13'25.6325"N	80°34'49.5941"W	4.03	28.266	1.50	1.48	-8.49
707.00	2.510	60.140	706.85	3.34	5.81	5.23	1757533.09	14608504.03	40°13'25.6547"N	80°34'49.5511"W	7.82	42.039	0.42	-0.07	9.36
798.00	1.300	109.970	797.80	2.89	6.45	7.93	1757535.79	14608504.67	40°13'25.6608"N	80°34'49.5163"W	10.22	50.908	2.14	-1.33	54.76
889.00	2.620	192.290	888.76	0.49	4.06	8.46	1757536.32	14608502.29	40°13'25.6373"N	80°34'49.5096"W	9.38	64.365	3.04	1.45	90.46
980.00	4.720	213.460	979.57	-3.30	-1.10	5.95	1757533.81	14608497.13	40°13'25.5864"N	80°34'49.5422"W	6.05	100.436	2.71	2.31	23.26
1071.00	6.180	225.920	1070.16	-7.18	-7.63	0.37	1757528.23	14608490.60	40°13'25.5221"N	80°34'49.6146"W	7.64	177.225	2.06	1.60	13.69
1163.00	7.210	235.920	1161.54	-10.14	-14.31	-7.97	1757519.89	14608483.93	40°13'25.4565"N	80°34'49.7225"W	16.38	209.118	1.69	1.12	10.87
1254.00	9.320	241.290	1251.59	-12.05	-21.05	-19.16	1757508.70	14608477.19	40°13'25.3904"N	80°34'49.8673"W	28.47	222.316	2.47	2.32	5.90
1344.00	11.220	243.030	1340.14	-13.47	-28.52	-33.36	1757494.51	14608469.72	40°13'25.3172"N	80°34'50.0507"W	43.89	229.471	2.14	2.11	1.93



Actual Wellpath Report

John Good Jr BRK 401H AWP Proj: 24805'
Page 3 of 14



REFERENCE WELLPATH IDENTIFICATION			
Operator	SWN PRODUCTION COMPANY, LLC	Well	John Good Jr BRK 401H
Field	Brooke	API/Legal	
Facility	John Good Jr BRK Pad	Wellbore	John Good Jr BRK 401H AWB
Slot	Slot #401H		

WELLPATH DATA (289 stations)															
MD [ft]	Inclination [°]	Azimuth [°]	TVD [ft]	Vert Sect [ft]	North [ft]	East [ft]	Grid East [US ft]	Grid North [US ft]	Latitude	Longitude	Closure Dist [ft]	Closure Dir [°]	DLS [°/100ft]	Build Rate [°/100ft]	Turn Rate [°/100ft]
1435.00	12.930	241.890	1429.13	-15.11	-37.33	-50.23	1757477.65	14608460.91	40°13'25.2309"N	80°34'50.2688"W	62.59	233.379	1.90	1.88	-1.25
1526.00	14.140	239.100	1517.60	-17.67	-47.84	-68.75	1757459.14	14608450.41	40°13'25.1280"N	80°34'50.5082"W	83.76	235.168	1.51	1.33	-3.07
1596.00	14.950	235.810	1585.35	-20.71	-57.31	-83.56	1757444.34	14608440.95	40°13'25.0352"N	80°34'50.6996"W	101.32	235.557	1.65	1.16	-4.70
1717.00	15.650	228.310	1702.08	-29.15	-76.93	-108.66	1757419.24	14608421.33	40°13'24.8424"N	80°34'51.0244"W	133.14	234.700	1.73	0.58	-6.20
1808.00	17.780	226.720	1789.23	-38.06	-94.62	-127.94	1757399.97	14608403.64	40°13'24.6685"N	80°34'51.2741"W	159.13	233.514	2.39	2.34	-1.75
1899.00	19.670	229.340	1875.41	-47.69	-114.13	-149.68	1757378.24	14608384.14	40°13'24.4767"N	80°34'51.5554"W	188.22	232.674	2.27	2.08	2.88
1989.00	22.650	229.290	1959.33	-57.74	-135.31	-174.31	1757353.62	14608362.98	40°13'24.2686"N	80°34'51.8743"W	220.66	232.180	3.31	3.31	-0.06
2081.00	25.520	229.710	2043.31	-69.24	-159.68	-202.86	1757325.08	14608338.61	40°13'24.0291"N	80°34'52.2438"W	258.17	231.792	3.13	3.12	0.46
2172.00	27.050	230.170	2124.90	-81.30	-185.61	-233.70	1757294.25	14608312.69	40°13'23.7742"N	80°34'52.6430"W	298.45	231.543	1.70	1.68	0.51
2263.00	27.330	231.830	2205.85	-93.00	-211.78	-266.02	1757261.95	14608286.54	40°13'23.5172"N	80°34'53.0612"W	340.02	231.477	0.89	0.31	1.82
2353.00	27.220	232.860	2285.84	-103.68	-236.97	-298.67	1757229.31	14608261.35	40°13'23.2698"N	80°34'53.4837"W	381.26	231.571	0.54	-0.12	1.14
2444.00	25.940	234.030	2367.22	-113.47	-261.23	-331.37	1757196.62	14608237.10	40°13'23.0316"N	80°34'53.9067"W	421.95	231.750	1.52	-1.41	1.29
2535.00	24.750	234.200	2449.46	-122.39	-284.06	-362.93	1757165.07	14608214.28	40°13'22.8074"N	80°34'54.3149"W	460.88	231.950	1.31	-1.31	0.19
2625.00	27.190	232.980	2530.37	-131.78	-307.47	-394.63	1757133.38	14608190.88	40°13'22.5776"N	80°34'54.7251"W	500.27	232.077	2.78	2.71	-1.36
2717.00	29.050	232.420	2611.50	-142.75	-333.75	-429.12	1757098.91	14608164.61	40°13'22.3195"N	80°34'55.1712"W	543.63	232.126	2.04	2.02	-0.61
2807.00	28.900	232.190	2690.24	-154.07	-360.41	-463.62	1757064.42	14608137.96	40°13'22.0577"N	80°34'55.6176"W	587.22	232.139	0.21	-0.17	-0.26
2898.00	27.470	232.870	2770.45	-165.07	-386.56	-497.72	1757030.33	14608111.82	40°13'21.8008"N	80°34'56.0589"W	630.20	232.165	1.61	-1.57	0.75
2989.00	26.430	235.120	2851.57	-174.61	-410.81	-531.07	1756996.99	14608087.58	40°13'21.5627"N	80°34'56.4903"W	671.42	232.276	1.60	-1.14	2.47
3081.00	26.760	231.500	2933.84	-184.60	-435.41	-564.08	1756964.00	14608062.99	40°13'21.3211"N	80°34'56.9173"W	712.58	232.336	1.80	0.36	-3.93
3171.00	25.610	233.150	3014.60	-194.91	-459.69	-595.50	1756932.59	14608038.72	40°13'21.0827"N	80°34'57.3239"W	752.29	232.334	1.51	-1.28	1.83
3262.00	24.050	235.790	3097.19	-203.45	-481.91	-626.58	1756901.52	14608016.50	40°13'20.8645"N	80°34'57.7258"W	790.47	232.435	2.10	-1.71	2.90
3353.00	25.020	236.840	3179.97	-210.68	-502.87	-658.02	1756870.09	14607995.56	40°13'20.6590"N	80°34'58.1324"W	828.17	232.613	1.17	1.07	1.15
3444.00	26.970	234.600	3261.76	-218.74	-525.35	-690.96	1756837.17	14607973.08	40°13'20.4383"N	80°34'58.5584"W	867.99	232.754	2.40	2.14	-2.46
3534.00	27.390	230.370	3341.83	-229.29	-550.38	-723.54	1756804.60	14607948.07	40°13'20.1925"N	80°34'58.9799"W	909.08	232.741	2.20	0.47	-4.70
3625.00	25.600	231.240	3423.27	-240.86	-576.04	-755.00	1756773.16	14607922.41	40°13'19.9404"N	80°34'59.3870"W	949.65	232.658	2.01	-1.97	0.96
3716.00	23.930	234.710	3505.90	-250.36	-599.01	-785.39	1756742.77	14607899.45	40°13'19.7148"N	80°34'59.7802"W	987.76	232.668	2.43	-1.84	3.81
3807.00	22.950	235.540	3589.39	-258.03	-619.71	-815.09	1756713.09	14607878.76	40°13'19.5116"N	80°35'0.1643"W	1023.92	232.754	1.14	-1.08	0.91
3896.00	23.740	234.030	3671.11	-265.71	-640.05	-843.90	1756684.29	14607858.42	40°13'19.3119"N	80°35'0.5369"W	1059.16	232.821	1.11	0.89	-1.70
3987.00	24.530	232.430	3754.15	-274.79	-662.33	-873.69	1756654.50	14607836.15	40°13'19.0931"N	80°35'0.9224"W	1096.37	232.835	1.13	0.87	-1.76
4077.00	25.700	230.650	3835.64	-285.21	-686.10	-903.59	1756624.62	14607812.40	40°13'18.8597"N	80°35'1.3093"W	1134.55	232.791	1.55	1.30	-1.98

REFERENCE WELLPATH IDENTIFICATION			
Operator	SWN PRODUCTION COMPANY, LLC	Well	John Good Jr BRK 401H
Field	Brooke	API/Legal	
Facility	John Good Jr BRK Pad	Wellbore	John Good Jr BRK 401H AWB
Slot	Slot #401H		

WELLPATH DATA (289 stations)															
MD [ft]	Inclination [°]	Azimuth [°]	TVD [ft]	Vert Sect [ft]	North [ft]	East [ft]	Grid East [US ft]	Grid North [US ft]	Latitude	Longitude	Closure Dist [ft]	Closure Dir [°]	DLS [°/100ft]	Build Rate [°/100ft]	Turn Rate [°/100ft]
4170.00	25.490	229.590	3919.52	-297.11	-711.86	-934.42	1756593.80	14607786.65	40°13'18.6066"N	80°35'1.7083"W	1174.69	232.699	0.54	-0.23	-1.14
4261.00	25.840	231.640	4001.54	-308.45	-736.86	-964.88	1756563.35	14607761.66	40°13'18.3609"N	80°35'2.1025"W	1214.07	232.632	1.05	0.38	2.25
4352.00	25.610	232.300	4083.52	-318.93	-761.19	-996.00	1756532.25	14607737.33	40°13'18.1219"N	80°35'2.5050"W	1253.56	232.611	0.40	-0.25	0.73
4443.00	25.190	233.260	4165.73	-328.75	-784.80	-1027.08	1756501.18	14607713.73	40°13'17.8900"N	80°35'2.9071"W	1292.60	232.616	0.65	-0.46	1.05
4534.00	25.670	233.660	4247.91	-338.13	-808.07	-1058.47	1756469.80	14607690.47	40°13'17.6616"N	80°35'3.3132"W	1331.67	232.641	0.56	0.53	0.44
4625.00	26.350	231.910	4329.69	-348.17	-832.21	-1090.24	1756438.04	14607666.34	40°13'17.4245"N	80°35'3.7243"W	1371.57	232.645	1.13	0.75	-1.92
4715.00	25.990	231.020	4410.47	-359.03	-856.93	-1121.29	1756407.00	14607641.63	40°13'17.1816"N	80°35'4.1260"W	1411.25	232.612	0.59	-0.40	-0.99
4806.00	26.130	231.730	4492.22	-370.03	-881.89	-1152.53	1756375.78	14607616.68	40°13'16.9365"N	80°35'4.5302"W	1451.22	232.578	0.38	0.15	0.78
4897.00	25.780	228.690	4574.04	-381.76	-907.36	-1183.12	1756345.19	14607591.22	40°13'16.6861"N	80°35'4.9261"W	1491.00	232.515	1.51	-0.38	-3.34
4988.00	25.460	230.400	4656.10	-393.79	-932.89	-1213.06	1756315.27	14607565.70	40°13'16.4352"N	80°35'5.3136"W	1530.30	232.438	0.89	-0.35	1.88
5079.00	25.450	231.030	4738.26	-404.99	-957.66	-1243.33	1756285.01	14607540.94	40°13'16.1919"N	80°35'5.7053"W	1569.39	232.395	0.30	-0.01	0.69
5170.00	24.900	227.360	4820.62	-417.03	-982.93	-1272.63	1756255.72	14607515.68	40°13'15.9435"N	80°35'6.0845"W	1608.02	232.319	1.82	-0.60	-4.03
5260.00	23.920	222.050	4902.59	-431.31	-1009.32	-1298.79	1756229.57	14607489.30	40°13'15.6839"N	80°35'6.4234"W	1644.87	232.148	2.67	-1.09	-5.90
5363.00	24.350	223.940	4996.58	-448.67	-1040.12	-1327.51	1756200.86	14607458.51	40°13'15.3809"N	80°35'6.7955"W	1686.45	231.921	0.86	0.42	1.83
5453.00	26.410	235.630	5077.95	-460.12	-1064.80	-1356.93	1756171.46	14607433.85	40°13'15.1384"N	80°35'7.1762"W	1724.83	231.878	6.01	2.29	12.99
5544.00	26.860	248.910	5159.36	-463.67	-1083.63	-1392.85	1756135.55	14607415.01	40°13'14.9539"N	80°35'7.6403"W	1764.73	232.117	6.55	0.49	14.59
5635.00	26.030	262.550	5240.91	-457.87	-1093.63	-1431.86	1756096.55	14607405.02	40°13'14.8570"N	80°35'8.1439"W	1801.74	232.628	6.72	-0.91	14.99
5726.00	28.750	274.480	5321.77	-442.64	-1094.51	-1473.52	1756054.91	14607404.14	40°13'14.8502"N	80°35'8.6809"W	1835.54	233.396	6.72	2.99	13.11
5817.00	29.890	285.400	5401.17	-418.67	-1086.77	-1517.23	1756011.22	14607411.88	40°13'14.9286"N	80°35'9.2440"W	1866.30	234.386	6.00	1.25	12.00
5907.00	33.720	293.800	5477.68	-386.71	-1070.72	-1561.75	1755966.72	14607427.92	40°13'15.0893"N	80°35'9.8168"W	1893.54	235.566	6.50	4.26	9.33
5998.00	38.000	301.920	5551.45	-345.54	-1045.69	-1608.68	1755919.80	14607452.94	40°13'15.3388"N	80°35'10.4204"W	1918.68	236.975	7.02	4.70	8.92
6089.00	41.970	312.300	5621.24	-295.07	-1010.35	-1655.03	1755873.46	14607488.27	40°13'15.6902"N	80°35'11.0158"W	1939.06	238.597	8.52	4.36	11.41
6179.00	46.870	318.190	5685.53	-236.73	-965.57	-1699.23	1755829.28	14607533.03	40°13'16.1347"N	80°35'11.5829"W	1954.41	240.393	7.11	5.44	6.54
6270.00	52.140	320.700	5744.61	-170.89	-912.98	-1744.16	1755784.38	14607585.60	40°13'16.6565"N	80°35'12.1589"W	1968.66	242.370	6.16	5.79	2.76
6361.00	59.530	327.400	5795.72	-97.69	-852.01	-1788.14	1755740.42	14607646.55	40°13'17.2610"N	80°35'12.7221"W	1980.75	244.523	10.15	8.12	7.36
6451.00	67.400	333.460	5835.92	-17.85	-782.01	-1827.69	1755700.88	14607716.52	40°13'17.9546"N	80°35'13.2278"W	1987.96	246.835	10.61	8.74	6.73
6542.00	74.510	334.570	5865.60	67.96	-704.73	-1865.33	1755663.25	14607793.77	40°13'18.7200"N	80°35'13.7085"W	1994.02	249.303	7.90	7.81	1.22
6633.00	83.280	336.100	5883.11	157.12	-623.65	-1902.54	1755626.05	14607874.82	40°13'19.5229"N	80°35'14.1833"W	2002.15	251.851	9.78	9.64	1.68
6723.00	89.940	341.350	5888.43	246.85	-540.01	-1935.10	1755593.51	14607958.43	40°13'20.3510"N	80°35'14.5980"W	2009.03	254.408	9.41	7.40	5.83
6814.00	90.150	340.620	5888.36	337.67	-453.97	-1964.75	1755563.87	14608044.43	40°13'21.2025"N	80°35'14.9750"W	2016.51	256.990	0.83	0.23	-0.80

REFERENCE WELLPATH IDENTIFICATION			
Operator	SWN PRODUCTION COMPANY, LLC	Well	John Good Jr BRK 401H
Field	Brooke	API/Legal	
Facility	John Good Jr BRK Pad	Wellbore	John Good Jr BRK 401H AWB
Slot	Slot #401H		

WELLPATH DATA (289 stations)																
MD [ft]	Inclination [°]	Azimuth [°]	TVD [ft]	Vert Sect [ft]	North [ft]	East [ft]	Grid East [US ft]	Grid North [US ft]	Latitude	Longitude	Closure Dist [ft]	Closure Dir [°]	DLS [°/100ft]	Build Rate [°/100ft]	Turn Rate [°/100ft]	
6905.00	90.220	340.330	5888.07	428.53	-368.21	-1995.16	1755533.47	14608130.17	40°13'22.0514"N	80°35'15.3620"W	2028.85	259.544	0.33	0.08	-0.32	
6995.00	90.990	340.560	5887.12	518.39	-283.40	-2025.28	1755503.36	14608214.94	40°13'22.8908"N	80°35'15.7452"W	2045.02	262.034	0.89	0.86	0.26	
7086.00	91.110	340.320	5885.45	609.25	-197.67	-2055.75	1755472.91	14608300.64	40°13'23.7394"N	80°35'16.1328"W	2065.23	264.508	0.29	0.13	-0.26	
7176.00	90.740	338.880	5884.00	699.16	-113.33	-2087.11	1755441.55	14608384.95	40°13'24.5743"N	80°35'16.5321"W	2090.19	266.892	1.65	-0.41	-1.60	
7267.00	90.740	340.410	5882.82	790.08	-28.02	-2118.76	1755409.92	14608470.22	40°13'25.4188"N	80°35'16.9350"W	2118.95	269.242	1.68	0.00	1.68	
7358.00	91.110	339.940	5881.35	880.96	57.58	-2149.62	1755379.07	14608555.78	40°13'26.2660"N	80°35'17.3277"W	2150.39	271.534	0.66	0.41	-0.52	
7448.00	90.710	340.000	5879.92	970.85	142.12	-2180.44	1755348.26	14608640.30	40°13'27.1029"N	80°35'17.7200"W	2185.07	273.729	0.45	-0.44	0.07	
7540.00	92.120	340.400	5877.65	1062.71	228.65	-2211.60	1755317.12	14608726.80	40°13'27.9594"N	80°35'18.1164"W	2223.38	275.903	1.59	1.53	0.43	
7633.00	90.460	339.370	5875.56	1155.59	315.96	-2243.57	1755285.16	14608814.06	40°13'28.8236"N	80°35'18.5234"W	2265.71	278.016	2.10	-1.78	-1.11	
7725.00	90.920	340.070	5874.45	1247.50	402.25	-2275.45	1755253.28	14608900.32	40°13'29.6777"N	80°35'18.9293"W	2310.73	280.025	0.91	0.50	0.76	
7817.00	91.170	340.100	5872.77	1339.38	488.73	-2306.79	1755221.96	14608986.77	40°13'30.5338"N	80°35'19.3281"W	2357.99	281.962	0.27	0.27	0.03	
7907.00	90.310	339.360	5871.61	1429.29	573.15	-2337.96	1755190.80	14609071.16	40°13'31.3694"N	80°35'19.7250"W	2407.19	283.774	1.26	-0.96	-0.82	
7999.00	90.620	339.950	5870.86	1521.22	659.40	-2369.95	1755158.83	14609157.38	40°13'32.2233"N	80°35'20.1322"W	2459.97	285.548	0.72	0.34	0.64	
8090.00	90.830	340.600	5869.71	1612.09	745.06	-2400.66	1755128.13	14609243.00	40°13'33.0711"N	80°35'20.5230"W	2513.62	287.242	0.75	0.23	0.71	
8181.00	90.340	340.640	5868.78	1702.94	830.90	-2430.85	1755097.95	14609328.81	40°13'33.9207"N	80°35'20.9071"W	2568.94	288.871	0.54	-0.54	0.04	
8273.00	90.770	340.360	5867.89	1794.79	917.61	-2461.56	1755067.25	14609415.49	40°13'34.7791"N	80°35'21.2978"W	2627.03	290.444	0.56	0.47	-0.30	
8366.00	91.230	340.660	5866.27	1887.64	1005.27	-2492.59	1755036.24	14609503.11	40°13'35.6467"N	80°35'21.6926"W	2687.67	291.964	0.59	0.49	0.32	
8459.00	90.920	340.890	5864.52	1980.45	1093.07	-2523.20	1755005.63	14609590.88	40°13'36.5157"N	80°35'22.0821"W	2749.79	293.423	0.42	-0.33	0.25	
8552.00	90.740	340.800	5863.17	2073.27	1180.91	-2553.72	1754975.13	14609678.69	40°13'37.3851"N	80°35'22.4702"W	2813.54	294.817	0.22	-0.19	-0.10	
8644.00	90.580	340.530	5862.12	2165.11	1267.72	-2584.17	1754944.68	14609765.46	40°13'38.2443"N	80°35'22.8577"W	2878.38	296.131	0.34	-0.17	-0.29	
8737.00	90.710	340.510	5861.07	2257.96	1355.39	-2615.19	1754913.68	14609853.09	40°13'39.1121"N	80°35'23.2523"W	2945.55	297.397	0.14	0.14	-0.02	
8829.00	91.110	340.420	5859.61	2349.82	1442.08	-2645.95	1754882.94	14609939.75	40°13'39.9702"N	80°35'23.6437"W	3013.41	298.591	0.45	0.43	-0.10	
8922.00	90.430	340.590	5858.36	2442.67	1529.74	-2676.98	1754851.92	14610027.38	40°13'40.8378"N	80°35'24.0386"W	3083.23	299.746	0.75	-0.73	0.18	
9014.00	90.680	340.330	5857.47	2534.53	1616.44	-2707.75	1754821.16	14610114.04	40°13'41.6960"N	80°35'24.4301"W	3153.53	300.836	0.39	0.27	-0.28	
9107.00	90.490	340.480	5856.52	2627.39	1704.05	-2738.94	1754789.98	14610201.62	40°13'42.5631"N	80°35'24.8270"W	3225.76	301.888	0.26	-0.20	0.16	
9197.00	90.580	340.440	5855.68	2717.25	1788.86	-2769.04	1754759.89	14610286.40	40°13'43.4026"N	80°35'25.2100"W	3296.60	302.863	0.11	0.10	-0.04	
9288.00	90.920	340.380	5854.49	2808.11	1874.59	-2799.54	1754729.40	14610372.09	40°13'44.2511"N	80°35'25.5982"W	3369.20	303.806	0.38	0.37	-0.07	
9381.00	90.340	340.280	5853.46	2900.98	1962.15	-2830.85	1754698.11	14610459.63	40°13'45.1179"N	80°35'25.9966"W	3444.38	304.727	0.63	-0.62	-0.11	
9473.00	90.370	340.130	5852.89	2992.87	2048.72	-2862.00	1754666.96	14610546.15	40°13'45.9747"N	80°35'26.3931"W	3519.70	305.596	0.17	0.03	-0.16	
9565.00	90.280	340.280	5852.37	3084.75	2135.28	-2893.16	1754635.82	14610632.68	40°13'46.8315"N	80°35'26.7896"W	3595.80	306.429	0.19	-0.10	0.16	



Actual Wellpath Report

John Good Jr BRK 401H AWP Proj: 24805'
Page 6 of 14



REFERENCE WELLPATH IDENTIFICATION			
Operator	SWN PRODUCTION COMPANY, LLC	Well	John Good Jr BRK 401H
Field	Brooke	API/Legal	
Facility	John Good Jr BRK Pad	Wellbore	John Good Jr BRK 401H AWB
Slot	Slot #401H		

WELLPATH DATA (289 stations)															
MD [ft]	Inclination [°]	Azimuth [°]	TVD [ft]	Vert Sect [ft]	North [ft]	East [ft]	Grid East [US ft]	Grid North [US ft]	Latitude	Longitude	Closure Dist [ft]	Closure Dir [°]	DLS [°/100ft]	Build Rate [°/100ft]	Turn Rate [°/100ft]
9656.00	90.620	340.830	5851.66	3175.61	2221.08	-2923.45	1754605.54	14610718.46	40°13'47.6808"N	80°35'27.1751"W	3671.48	307.226	0.71	0.37	0.60
9747.00	90.220	340.110	5850.99	3266.47	2306.85	-2953.87	1754575.13	14610804.18	40°13'48.5297"N	80°35'27.5622"W	3747.92	307.988	0.91	-0.44	-0.79
9840.00	90.710	340.120	5850.23	3359.36	2394.30	-2985.50	1754543.51	14610891.60	40°13'49.3953"N	80°35'27.9648"W	3826.99	308.729	0.53	0.53	0.01
9932.00	90.990	340.600	5848.87	3451.22	2480.94	-3016.42	1754512.60	14610978.21	40°13'50.2529"N	80°35'28.3583"W	3905.62	309.436	0.60	0.30	0.52
10023.00	90.890	340.580	5847.38	3542.06	2566.75	-3046.66	1754482.38	14611063.99	40°13'51.1023"N	80°35'28.7431"W	3983.76	310.113	0.11	-0.11	-0.02
10116.00	90.800	340.450	5846.01	3634.91	2654.42	-3077.68	1754451.37	14611151.62	40°13'51.9700"N	80°35'29.1378"W	4064.24	310.777	0.17	-0.10	-0.14
10209.00	90.710	340.690	5844.78	3727.75	2742.11	-3108.61	1754420.45	14611239.28	40°13'52.8380"N	80°35'29.5314"W	4145.19	311.416	0.28	-0.10	0.26
10300.00	90.740	340.700	5843.63	3818.59	2827.99	-3138.69	1754390.38	14611325.13	40°13'53.6880"N	80°35'29.9142"W	4224.80	312.019	0.03	0.03	0.01
10392.00	90.650	339.950	5842.51	3910.46	2914.61	-3169.67	1754359.42	14611411.71	40°13'54.5453"N	80°35'30.3083"W	4306.01	312.600	0.82	-0.10	-0.82
10483.00	90.770	340.700	5841.38	4001.33	3000.29	-3200.30	1754328.80	14611497.36	40°13'55.3934"N	80°35'30.6983"W	4386.76	313.152	0.83	0.13	0.82
10573.00	90.650	340.440	5840.27	4091.18	3085.16	-3230.24	1754298.87	14611582.20	40°13'56.2334"N	80°35'31.0792"W	4466.84	313.684	0.32	-0.13	-0.29
10664.00	90.920	340.660	5839.02	4182.03	3170.96	-3260.54	1754268.58	14611667.96	40°13'57.0826"N	80°35'31.4648"W	4548.19	314.202	0.38	0.30	0.24
10754.00	90.680	340.850	5837.77	4271.86	3255.92	-3290.20	1754238.93	14611752.89	40°13'57.9236"N	80°35'31.8422"W	4628.87	314.700	0.34	-0.27	0.21
10845.00	90.620	340.250	5836.73	4362.71	3341.72	-3320.50	1754208.65	14611838.66	40°13'58.7728"N	80°35'32.2277"W	4710.92	315.183	0.66	-0.07	-0.66
10937.00	91.140	340.660	5835.32	4454.57	3428.41	-3351.27	1754177.88	14611925.31	40°13'59.6309"N	80°35'32.6194"W	4794.27	315.652	0.72	0.57	0.45
11027.00	90.950	340.930	5833.68	4544.39	3513.39	-3380.87	1754148.29	14612010.26	40°14'0.4719"N	80°35'32.9960"W	4875.88	316.101	0.37	-0.21	0.30
11118.00	90.650	340.760	5832.41	4635.21	3599.34	-3410.73	1754118.45	14612096.18	40°14'1.3227"N	80°35'33.3759"W	4958.66	316.541	0.38	-0.33	-0.19
11210.00	90.710	340.470	5831.32	4727.06	3686.12	-3441.26	1754087.93	14612182.92	40°14'2.1816"N	80°35'33.7644"W	5042.79	316.968	0.32	0.07	-0.32
11300.00	91.510	340.860	5829.57	4816.89	3771.02	-3471.06	1754058.15	14612267.80	40°14'3.0220"N	80°35'34.1435"W	5125.31	317.372	0.99	0.89	0.43
11392.00	91.080	340.620	5827.49	4908.70	3857.85	-3501.39	1754027.82	14612354.59	40°14'3.8814"N	80°35'34.5296"W	5209.87	317.773	0.54	-0.47	-0.26
11483.00	91.140	341.210	5825.73	4999.51	3943.83	-3531.14	1753998.08	14612440.54	40°14'4.7324"N	80°35'34.9081"W	5293.66	318.160	0.65	0.07	0.65
11575.00	90.950	341.390	5824.05	5091.28	4030.96	-3560.63	1753968.60	14612527.64	40°14'5.5947"N	80°35'35.2832"W	5378.36	318.545	0.28	-0.21	0.20
11665.00	90.830	340.360	5822.66	5181.09	4115.98	-3590.12	1753939.13	14612612.62	40°14'6.4362"N	80°35'35.6583"W	5461.71	318.904	1.15	-0.13	-1.14
11756.00	90.990	340.570	5821.21	5271.95	4201.73	-3620.54	1753908.72	14612698.34	40°14'7.2849"N	80°35'36.0455"W	5546.43	319.249	0.29	0.18	0.23
11848.00	90.620	340.220	5819.92	5363.81	4288.39	-3651.41	1753877.86	14612784.97	40°14'8.1427"N	80°35'36.4384"W	5632.33	319.587	0.55	-0.40	-0.38
11939.00	90.860	340.410	5818.74	5454.68	4374.07	-3682.06	1753847.22	14612870.61	40°14'8.9907"N	80°35'36.8285"W	5717.52	319.910	0.34	0.26	0.21
12030.00	90.770	340.710	5817.45	5545.53	4459.87	-3712.34	1753816.95	14612956.38	40°14'9.8400"N	80°35'37.2139"W	5802.75	320.226	0.34	-0.10	0.33
12122.00	90.950	340.660	5816.07	5637.36	4546.68	-3742.77	1753786.54	14613043.16	40°14'10.6992"N	80°35'37.6011"W	5889.03	320.539	0.20	0.20	-0.05
12214.00	90.770	337.880	5814.69	5729.29	4632.71	-3775.33	1753753.99	14613129.15	40°14'11.5508"N	80°35'38.0159"W	5976.21	320.822	3.03	-0.20	-3.02
12307.00	90.860	338.260	5813.36	5822.27	4718.97	-3810.06	1753719.28	14613215.38	40°14'12.4047"N	80°35'38.4586"W	6065.08	321.083	0.42	0.10	0.41



Actual Wellpath Report

John Good Jr BRK 401H AWP Proj: 24805'
Page 7 of 14



REFERENCE WELLPATH IDENTIFICATION			
Operator	SWN PRODUCTION COMPANY, LLC	Well	John Good Jr BRK 401H
Field	Brooke	API/Legal	
Facility	John Good Jr BRK Pad	Wellbore	John Good Jr BRK 401H AWB
Slot	Slot #401H		

WELLPATH DATA (289 stations)															
MD [ft]	Inclination [°]	Azimuth [°]	TVD [ft]	Vert Sect [ft]	North [ft]	East [ft]	Grid East [US ft]	Grid North [US ft]	Latitude	Longitude	Closure Dist [ft]	Closure Dir [°]	DLS [°/100ft]	Build Rate [°/100ft]	Turn Rate [°/100ft]
12398.00	90.860	336.100	5812.00	5913.26	4802.83	-3845.34	1753684.00	14613299.21	40°14'13.2351"N	80°35'38.9086"W	6152.55	321.318	2.37	0.00	-2.37
12489.00	90.740	336.090	5810.73	6004.23	4886.02	-3882.21	1753647.15	14613382.36	40°14'14.0588"N	80°35'39.3791"W	6240.57	321.531	0.13	-0.13	-0.01
12582.00	90.770	336.160	5809.50	6097.20	4971.05	-3919.85	1753609.52	14613467.36	40°14'14.9008"N	80°35'39.8594"W	6330.61	321.743	0.08	0.03	0.08
12673.00	90.770	335.960	5808.28	6188.16	5054.22	-3956.77	1753572.61	14613550.49	40°14'15.7242"N	80°35'40.3306"W	6418.81	321.944	0.22	0.00	-0.22
12764.00	90.830	336.060	5807.01	6279.13	5137.35	-3993.77	1753535.63	14613633.59	40°14'16.5474"N	80°35'40.8028"W	6507.11	322.139	0.13	0.07	0.11
12854.00	91.350	336.310	5805.30	6369.10	5219.67	-4030.10	1753499.31	14613715.88	40°14'17.3625"N	80°35'41.2664"W	6594.44	322.328	0.64	0.58	0.28
12945.00	90.830	336.190	5803.56	6460.06	5302.95	-4066.75	1753462.68	14613799.13	40°14'18.1871"N	80°35'41.7340"W	6682.79	322.516	0.59	-0.57	-0.13
13036.00	90.950	336.140	5802.15	6551.03	5386.18	-4103.52	1753425.93	14613882.33	40°14'19.0112"N	80°35'42.2032"W	6771.24	322.698	0.14	0.13	-0.05
13126.00	90.830	336.100	5800.75	6641.00	5468.46	-4139.95	1753389.51	14613964.58	40°14'19.8260"N	80°35'42.6681"W	6858.81	322.872	0.14	-0.13	-0.04
13217.00	90.890	335.890	5799.39	6731.96	5551.58	-4176.96	1753352.51	14614047.67	40°14'20.6490"N	80°35'43.1405"W	6947.45	323.043	0.24	0.07	-0.23
13309.00	90.680	336.030	5798.13	6823.93	5635.59	-4214.44	1753315.05	14614131.65	40°14'21.4809"N	80°35'43.6188"W	7037.14	323.210	0.27	-0.23	0.15
13399.00	90.800	336.040	5796.96	6913.90	5717.83	-4250.99	1753278.51	14614213.85	40°14'22.2952"N	80°35'44.0853"W	7124.92	323.371	0.13	0.13	0.01
13490.00	90.800	335.890	5795.69	7004.86	5800.93	-4288.05	1753241.47	14614296.92	40°14'23.1181"N	80°35'44.5583"W	7213.75	323.528	0.16	0.00	-0.16
13582.00	91.080	336.170	5794.18	7096.82	5884.98	-4325.42	1753204.11	14614380.94	40°14'23.9504"N	80°35'45.0353"W	7303.58	323.684	0.43	0.30	0.30
13672.00	90.830	336.140	5792.68	7186.79	5967.29	-4361.80	1753167.75	14614463.22	40°14'24.7653"N	80°35'45.4995"W	7391.47	323.835	0.28	-0.28	-0.03
13764.00	90.950	335.910	5791.26	7278.76	6051.34	-4399.18	1753130.38	14614547.24	40°14'25.5976"N	80°35'45.9766"W	7481.41	323.984	0.28	0.13	-0.25
13856.00	90.990	336.400	5789.70	7370.72	6135.48	-4436.36	1753093.21	14614631.34	40°14'26.4307"N	80°35'46.4511"W	7571.36	324.131	0.53	0.04	0.53
13946.00	90.920	336.290	5788.20	7460.70	6217.90	-4472.47	1753057.12	14614713.73	40°14'27.2468"N	80°35'46.9119"W	7659.33	324.273	0.14	-0.08	-0.12
14037.00	90.830	336.250	5786.81	7551.67	6301.20	-4509.09	1753020.52	14614797.00	40°14'28.0716"N	80°35'47.3792"W	7748.35	324.413	0.11	-0.10	-0.04
14127.00	90.990	336.160	5785.38	7641.64	6383.54	-4545.39	1752984.22	14614879.30	40°14'28.8869"N	80°35'47.8425"W	7836.47	324.547	0.20	0.18	-0.10
14219.00	90.740	336.190	5783.99	7733.61	6467.69	-4582.55	1752947.08	14614963.42	40°14'29.7201"N	80°35'48.3168"W	7926.59	324.681	0.27	-0.27	0.03
14310.00	90.740	335.880	5782.81	7824.58	6550.84	-4619.51	1752910.13	14615046.54	40°14'30.5434"N	80°35'48.7885"W	8015.82	324.809	0.34	0.00	-0.34
14400.00	90.800	336.120	5781.61	7914.55	6633.05	-4656.11	1752873.54	14615128.72	40°14'31.3575"N	80°35'49.2557"W	8104.12	324.933	0.27	0.07	0.27
14492.00	90.920	335.990	5780.22	8006.51	6717.12	-4693.45	1752836.22	14615212.76	40°14'32.1899"N	80°35'49.7322"W	8194.40	325.057	0.19	0.13	-0.14
14584.00	90.830	336.080	5778.82	8098.48	6801.18	-4730.81	1752798.87	14615296.78	40°14'33.0223"N	80°35'50.2091"W	8284.73	325.178	0.14	-0.10	0.10
14675.00	90.800	336.340	5777.53	8189.45	6884.44	-4767.52	1752762.18	14615380.01	40°14'33.8467"N	80°35'50.6775"W	8374.05	325.297	0.29	-0.03	0.29
14765.00	90.400	335.980	5776.58	8279.43	6966.76	-4803.89	1752725.82	14615462.30	40°14'34.6617"N	80°35'51.1417"W	8462.45	325.412	0.60	-0.44	-0.40
14856.00	90.400	335.890	5775.95	8370.40	7049.85	-4841.00	1752688.73	14615545.35	40°14'35.4845"N	80°35'51.6154"W	8551.94	325.523	0.10	0.00	-0.10
14946.00	90.620	336.210	5775.15	8460.37	7132.09	-4877.53	1752652.21	14615627.57	40°14'36.2989"N	80°35'52.0817"W	8640.43	325.632	0.43	0.24	0.36
15037.00	90.680	336.070	5774.11	8551.34	7215.31	-4914.34	1752615.42	14615710.75	40°14'37.1229"N	80°35'52.5515"W	8729.92	325.741	0.17	0.07	-0.15

REFERENCE WELLPATH IDENTIFICATION

Operator	SWN PRODUCTION COMPANY, LLC	Well	John Good Jr BRK 401H
Field	Brooke	API/Legal	
Facility	John Good Jr BRK Pad	Wellbore	John Good Jr BRK 401H AWB
Slot	Slot #401H		

WELLPATH DATA (289 stations)

MD [ft]	Inclination [°]	Azimuth [°]	TVD [ft]	Vert Sect [ft]	North [ft]	East [ft]	Grid East [US ft]	Grid North [US ft]	Latitude	Longitude	Closure Dist [ft]	Closure Dir [°]	DLS [°/100ft]	Build Rate [°/100ft]	Turn Rate [°/100ft]
15128.00	90.650	336.230	5773.06	8642.32	7298.53	-4951.13	1752578.64	14615793.94	40°14'37.9469"N	80°35'53.0211"W	8819.43	325.848	0.18	-0.03	0.18
15219.00	90.580	336.280	5772.08	8733.29	7381.83	-4987.77	1752542.01	14615877.20	40°14'38.7716"N	80°35'53.4887"W	8908.94	325.954	0.09	-0.08	0.05
15309.00	90.620	336.300	5771.14	8823.27	7464.22	-5023.96	1752505.84	14615959.57	40°14'39.5875"N	80°35'53.9505"W	8997.49	326.057	0.05	0.04	0.02
15400.00	90.770	336.380	5770.03	8914.25	7547.57	-5060.48	1752469.34	14616042.88	40°14'40.4127"N	80°35'54.4166"W	9087.04	326.159	0.19	0.16	0.09
15491.00	90.860	335.980	5768.74	9005.22	7630.81	-5097.22	1752432.60	14616126.09	40°14'41.2369"N	80°35'54.8856"W	9176.65	326.258	0.45	0.10	-0.44
15581.00	90.650	336.220	5767.55	9095.20	7713.09	-5133.68	1752396.16	14616208.34	40°14'42.0516"N	80°35'55.3510"W	9265.33	326.353	0.35	-0.23	0.27
15672.00	90.990	336.070	5766.25	9186.17	7796.30	-5170.48	1752359.37	14616291.52	40°14'42.8756"N	80°35'55.8207"W	9355.01	326.448	0.41	0.37	-0.16
15762.00	91.110	336.120	5764.60	9276.13	7878.57	-5206.95	1752322.92	14616373.75	40°14'43.6901"N	80°35'56.2861"W	9443.73	326.539	0.14	0.13	0.06
15852.00	90.800	336.400	5763.10	9366.10	7960.94	-5243.17	1752286.71	14616456.10	40°14'44.5057"N	80°35'56.7485"W	9532.44	326.631	0.46	-0.34	0.31
15944.00	91.050	336.000	5761.62	9458.07	8045.11	-5280.30	1752249.60	14616540.23	40°14'45.3391"N	80°35'57.2223"W	9623.16	326.722	0.51	0.27	-0.43
16035.00	90.680	336.050	5760.24	9549.03	8128.25	-5317.27	1752212.65	14616623.34	40°14'46.1623"N	80°35'57.6942"W	9712.97	326.808	0.41	-0.41	0.05
16125.00	90.830	335.970	5759.06	9639.00	8210.46	-5353.86	1752176.07	14616705.52	40°14'46.9764"N	80°35'58.1613"W	9801.81	326.893	0.19	0.17	-0.09
16217.00	90.830	335.940	5757.73	9730.97	8294.47	-5391.34	1752138.60	14616789.50	40°14'47.8082"N	80°35'58.6398"W	9892.66	326.976	0.03	0.00	-0.03
16309.00	91.080	336.130	5756.19	9822.93	8378.53	-5428.70	1752101.26	14616873.52	40°14'48.6406"N	80°35'59.1167"W	9983.51	327.060	0.34	0.27	0.21
16400.00	90.800	336.350	5754.70	9913.90	8461.80	-5465.36	1752064.61	14616956.77	40°14'49.4651"N	80°35'59.5846"W	10073.35	327.142	0.39	-0.31	0.24
16491.00	90.860	336.040	5753.38	10004.87	8545.05	-5502.09	1752027.90	14617039.98	40°14'50.2894"N	80°36'0.0534"W	10163.21	327.223	0.35	0.07	-0.34
16582.00	90.920	336.460	5751.97	10095.84	8628.34	-5538.73	1751991.27	14617123.23	40°14'51.1140"N	80°36'0.5211"W	10253.09	327.303	0.47	0.07	0.46
16672.00	90.400	336.310	5750.93	10185.82	8710.79	-5574.78	1751955.23	14617205.66	40°14'51.9304"N	80°36'0.9813"W	10341.96	327.381	0.60	-0.58	-0.17
16764.00	90.520	336.130	5750.19	10277.80	8794.98	-5611.88	1751918.15	14617289.81	40°14'52.7640"N	80°36'1.4548"W	10432.87	327.459	0.24	0.13	-0.20
16856.00	90.460	336.230	5749.41	10369.78	8879.14	-5649.03	1751881.01	14617373.94	40°14'53.5973"N	80°36'1.9290"W	10523.82	327.535	0.13	-0.07	0.11
16946.00	90.620	336.220	5748.56	10459.76	8961.50	-5685.31	1751844.74	14617456.27	40°14'54.4128"N	80°36'2.3922"W	10612.79	327.608	0.18	0.18	-0.01
17038.00	90.650	335.830	5747.54	10551.73	9045.56	-5722.70	1751807.38	14617540.29	40°14'55.2451"N	80°36'2.8693"W	10703.80	327.680	0.43	0.03	-0.42
17129.00	90.680	335.920	5746.48	10642.69	9128.60	-5759.89	1751770.20	14617623.31	40°14'56.0674"N	80°36'3.3442"W	10793.87	327.749	0.10	0.03	0.10
17220.00	90.920	336.530	5745.21	10733.67	9211.87	-5796.57	1751733.53	14617706.54	40°14'56.8919"N	80°36'3.8124"W	10883.88	327.820	0.72	0.26	0.67
17311.00	90.650	336.060	5743.96	10824.64	9295.19	-5833.15	1751696.96	14617789.82	40°14'57.7168"N	80°36'4.2793"W	10973.88	327.890	0.60	-0.30	-0.52
17402.00	90.650	336.060	5742.93	10915.61	9378.35	-5870.07	1751660.05	14617872.96	40°14'58.5403"N	80°36'4.7507"W	11063.96	327.957	0.00	0.00	0.00
17493.00	90.800	335.980	5741.78	11006.58	9461.49	-5907.05	1751623.09	14617956.07	40°14'59.3635"N	80°36'5.2228"W	11154.06	328.022	0.19	0.16	-0.09
17583.00	90.710	336.010	5740.59	11096.55	9543.70	-5943.67	1751586.49	14618038.24	40°15'0.1775"N	80°36'5.6902"W	11243.19	328.086	0.11	-0.10	0.03
17674.00	90.650	336.100	5739.51	11187.52	9626.86	-5980.60	1751549.57	14618121.37	40°15'1.0009"N	80°36'6.1617"W	11333.31	328.150	0.12	-0.07	0.10
17765.00	90.680	336.170	5738.46	11278.49	9710.08	-6017.41	1751512.77	14618204.55	40°15'1.8248"N	80°36'6.6316"W	11423.43	328.213	0.08	0.03	0.08



Actual Wellpath Report

John Good Jr BRK 401H AWP Proj: 24805'
Page 9 of 14



REFERENCE WELLPATH IDENTIFICATION			
Operator	SWN PRODUCTION COMPANY, LLC	Well	John Good Jr BRK 401H
Field	Brooke	API/Legal	
Facility	John Good Jr BRK Pad	Wellbore	John Good Jr BRK 401H AWB
Slot	Slot #401H		

WELLPATH DATA (289 stations)																
MD [ft]	Inclination [°]	Azimuth [°]	TVD [ft]	Vert Sect [ft]	North [ft]	East [ft]	Grid East [US ft]	Grid North [US ft]	Latitude	Longitude	Closure Dist [ft]	Closure Dir [°]	DLS [°/100ft]	Build Rate [°/100ft]	Turn Rate [°/100ft]	
17855.00	90.680	336.040	5737.39	11368.46	9792.36	-6053.86	1751476.34	14618286.80	40°15'2.6395"N	80°36'7.0970"W	11512.58	328.275	0.14	0.00	-0.14	
17947.00	90.680	336.050	5736.30	11460.43	9876.43	-6091.21	1751439.00	14618370.84	40°15'3.4719"N	80°36'7.5739"W	11603.74	328.336	0.01	0.00	0.01	
18040.00	90.650	336.000	5735.22	11553.40	9961.40	-6129.00	1751401.23	14618455.78	40°15'4.3133"N	80°36'8.0563"W	11695.90	328.397	0.06	-0.03	-0.05	
18130.00	90.620	336.210	5734.22	11643.37	10043.68	-6165.45	1751364.79	14618538.03	40°15'5.1280"N	80°36'8.5216"W	11785.09	328.456	0.24	-0.03	0.23	
18221.00	90.620	335.680	5733.24	11734.34	10126.77	-6202.55	1751327.71	14618621.09	40°15'5.9507"N	80°36'8.9952"W	11875.31	328.513	0.58	0.00	-0.58	
18312.00	90.740	336.310	5732.16	11825.31	10209.89	-6239.56	1751290.71	14618704.18	40°15'6.7738"N	80°36'9.4678"W	11965.54	328.570	0.70	0.13	0.69	
18402.00	90.710	335.930	5731.02	11915.28	10292.18	-6275.99	1751254.29	14618786.43	40°15'7.5885"N	80°36'9.9329"W	12054.75	328.626	0.42	-0.03	-0.42	
18494.00	90.770	336.210	5729.83	12007.25	10376.27	-6313.31	1751216.99	14618870.49	40°15'8.4211"N	80°36'10.4093"W	12145.98	328.682	0.31	0.07	0.30	
18585.00	90.740	336.720	5728.63	12098.23	10459.69	-6349.64	1751180.67	14618953.88	40°15'9.2471"N	80°36'10.8731"W	12236.14	328.740	0.56	-0.03	0.56	
18675.00	90.680	336.310	5727.52	12188.21	10542.23	-6385.50	1751144.82	14619036.38	40°15'10.0643"N	80°36'11.3308"W	12325.31	328.796	0.46	-0.07	-0.46	
18767.00	90.150	336.470	5726.85	12280.20	10626.52	-6422.35	1751107.99	14619120.65	40°15'10.8989"N	80°36'11.8012"W	12416.50	328.852	0.60	-0.58	0.17	
18859.00	90.180	333.750	5726.58	12372.12	10709.97	-6461.07	1751069.29	14619204.06	40°15'11.7252"N	80°36'12.2957"W	12507.95	328.898	2.96	0.03	-2.96	
18951.00	90.310	333.840	5726.19	12463.94	10792.51	-6501.69	1751028.68	14619286.57	40°15'12.5427"N	80°36'12.8149"W	12599.62	328.934	0.17	0.14	0.10	
19042.00	89.880	333.870	5726.04	12554.77	10874.20	-6541.79	1750988.60	14619368.23	40°15'13.3517"N	80°36'13.3274"W	12690.28	328.969	0.47	-0.47	0.03	
19132.00	90.000	334.220	5726.13	12644.62	10955.12	-6581.18	1750949.22	14619449.12	40°15'14.1531"N	80°36'13.8307"W	12779.93	329.005	0.41	0.13	0.39	
19223.00	90.220	333.860	5725.96	12735.47	11036.94	-6621.02	1750909.40	14619530.91	40°15'14.9634"N	80°36'14.3398"W	12870.58	329.041	0.46	0.24	-0.40	
19313.00	90.180	334.020	5725.65	12825.31	11117.79	-6660.55	1750869.88	14619611.73	40°15'15.7641"N	80°36'14.8451"W	12960.26	329.075	0.18	-0.04	0.18	
19401.00	90.060	334.340	5725.46	12913.18	11197.01	-6698.88	1750831.57	14619690.91	40°15'16.5485"N	80°36'15.3348"W	13047.91	329.109	0.39	-0.14	0.36	
19490.00	89.780	333.960	5725.59	13002.04	11277.10	-6737.69	1750792.78	14619770.97	40°15'17.3417"N	80°36'15.8307"W	13136.57	329.143	0.53	-0.31	-0.43	
19581.00	90.370	334.250	5725.47	13092.89	11358.96	-6777.43	1750753.05	14619852.80	40°15'18.1524"N	80°36'16.3386"W	13227.23	329.177	0.72	0.65	0.32	
19672.00	90.370	333.810	5724.88	13183.74	11440.77	-6817.28	1750713.22	14619934.58	40°15'18.9626"N	80°36'16.8478"W	13317.90	329.210	0.48	0.00	-0.48	
19763.00	90.280	333.830	5724.36	13274.56	11522.43	-6857.42	1750673.09	14620016.21	40°15'19.7714"N	80°36'17.3609"W	13408.61	329.242	0.10	-0.10	0.02	
19851.00	90.310	334.200	5723.91	13362.41	11601.54	-6895.98	1750634.54	14620095.29	40°15'20.5547"N	80°36'17.8537"W	13496.30	329.273	0.42	0.03	0.42	
19942.00	89.970	333.680	5723.69	13453.25	11683.29	-6935.96	1750594.58	14620177.00	40°15'21.3643"N	80°36'18.3646"W	13587.00	329.304	0.68	-0.37	-0.57	
20032.00	90.250	334.080	5723.51	13543.08	11764.09	-6975.58	1750554.98	14620257.78	40°15'22.1646"N	80°36'18.8710"W	13676.72	329.334	0.54	0.31	0.44	
20124.00	90.430	334.020	5722.97	13634.93	11846.82	-7015.84	1750514.73	14620340.47	40°15'22.9838"N	80°36'19.3855"W	13768.41	329.365	0.21	0.20	-0.07	
20215.00	90.310	333.970	5722.38	13725.77	11928.60	-7055.73	1750474.85	14620422.22	40°15'23.7937"N	80°36'19.8954"W	13859.11	329.396	0.14	-0.13	-0.05	
20305.00	90.280	333.940	5721.92	13815.61	12009.46	-7095.25	1750435.35	14620503.05	40°15'24.5945"N	80°36'20.4004"W	13948.83	329.425	0.05	-0.03	-0.03	
20397.00	90.150	333.900	5721.57	13907.45	12092.09	-7135.70	1750394.92	14620585.65	40°15'25.4128"N	80°36'20.9174"W	14040.54	329.455	0.15	-0.14	-0.04	
20487.00	90.280	334.320	5721.23	13997.30	12173.06	-7174.99	1750355.64	14620666.59	40°15'26.2147"N	80°36'21.4196"W	14130.25	329.484	0.49	0.14	0.47	



Actual Wellpath Report

John Good Jr BRK 401H AWP Proj: 24805'
Page 10 of 14



REFERENCE WELLPATH IDENTIFICATION

Operator	SWN PRODUCTION COMPANY, LLC	Well	John Good Jr BRK 401H
Field	Brooke	API/Legal	
Facility	John Good Jr BRK Pad	Wellbore	John Good Jr BRK 401H AWB
Slot	Slot #401H		

WELLPATH DATA (289 stations)

MD [ft]	Inclination [°]	Azimuth [°]	TVD [ft]	Vert Sect [ft]	North [ft]	East [ft]	Grid East [US ft]	Grid North [US ft]	Latitude	Longitude	Closure Dist [ft]	Closure Dir [°]	DLS [°/100ft]	Build Rate [°/100ft]	Turn Rate [°/100ft]
20578.00	90.150	333.720	5720.89	14088.15	12254.86	-7214.86	1750315.79	14620748.36	40°15'27.0248"N	80°36'21.9290"W	14220.96	329.513	0.67	-0.14	-0.66
20667.00	90.310	334.000	5720.54	14176.98	12334.76	-7254.07	1750276.60	14620828.22	40°15'27.8160"N	80°36'22.4302"W	14309.71	329.540	0.36	0.18	0.31
20759.00	90.340	333.690	5720.01	14268.81	12417.34	-7294.62	1750236.06	14620910.77	40°15'28.6338"N	80°36'22.9485"W	14401.45	329.568	0.34	0.03	-0.34
20851.00	89.970	333.620	5719.76	14360.62	12499.78	-7335.45	1750195.25	14620993.18	40°15'29.4503"N	80°36'23.4704"W	14493.22	329.594	0.41	-0.40	-0.08
20942.00	90.460	334.000	5719.42	14451.44	12581.44	-7375.61	1750155.10	14621074.81	40°15'30.2590"N	80°36'23.9838"W	14583.97	329.620	0.68	0.54	0.42
21032.00	90.430	334.030	5718.72	14541.29	12662.34	-7415.04	1750115.68	14621155.68	40°15'31.0601"N	80°36'24.4877"W	14673.70	329.647	0.05	-0.03	0.03
21123.00	90.550	333.670	5717.95	14632.11	12744.02	-7455.14	1750075.60	14621237.33	40°15'31.8691"N	80°36'25.0003"W	14764.46	329.673	0.42	0.13	-0.40
21214.00	90.180	334.060	5717.37	14722.94	12825.71	-7495.23	1750035.53	14621318.99	40°15'32.6781"N	80°36'25.5127"W	14855.21	329.698	0.59	-0.41	0.43
21304.00	90.180	333.930	5717.08	14812.79	12906.60	-7534.69	1749996.08	14621399.85	40°15'33.4791"N	80°36'26.0170"W	14944.96	329.724	0.14	0.00	-0.14
21395.00	90.150	333.830	5716.82	14903.62	12988.31	-7574.75	1749956.04	14621481.52	40°15'34.2883"N	80°36'26.5291"W	15035.72	329.749	0.11	-0.03	-0.11
21483.00	90.280	334.040	5716.49	14991.46	13067.36	-7613.42	1749917.38	14621560.54	40°15'35.0711"N	80°36'27.0233"W	15123.49	329.774	0.28	0.15	0.24
21575.00	90.310	334.000	5716.02	15083.31	13150.06	-7653.72	1749877.10	14621643.21	40°15'35.8902"N	80°36'27.5384"W	15215.24	329.799	0.05	0.03	-0.04
21665.00	90.250	333.800	5715.58	15173.14	13230.88	-7693.31	1749837.52	14621724.00	40°15'36.6905"N	80°36'28.0445"W	15305.01	329.823	0.23	-0.07	-0.22
21757.00	90.250	333.840	5715.18	15264.97	13313.44	-7733.90	1749796.95	14621806.53	40°15'37.5082"N	80°36'28.5634"W	15396.78	329.847	0.04	0.00	0.04
21846.00	90.370	336.480	5714.69	15353.89	13394.20	-7771.28	1749759.58	14621887.25	40°15'38.3078"N	80°36'29.0409"W	15485.39	329.878	2.97	0.13	2.97
21934.00	90.180	336.250	5714.27	15441.88	13474.82	-7806.56	1749724.31	14621967.84	40°15'39.1060"N	80°36'29.4914"W	15572.83	329.914	0.34	-0.22	-0.26
22023.00	90.280	336.120	5713.91	15530.86	13556.24	-7842.50	1749688.39	14622049.23	40°15'39.9122"N	80°36'29.9503"W	15661.30	329.950	0.18	0.11	-0.15
22115.00	90.250	336.360	5713.49	15622.84	13640.44	-7879.57	1749651.34	14622133.40	40°15'40.7459"N	80°36'30.4236"W	15752.75	329.987	0.26	-0.03	0.26
22205.00	90.310	336.070	5713.05	15712.82	13722.79	-7915.86	1749615.05	14622215.72	40°15'41.5613"N	80°36'30.8871"W	15842.22	330.022	0.33	0.07	-0.32
22296.00	90.280	336.160	5712.58	15803.80	13806.00	-7952.71	1749578.22	14622298.90	40°15'42.3851"N	80°36'31.3577"W	15932.71	330.057	0.10	-0.03	0.10
22387.00	90.430	335.870	5712.02	15894.77	13889.14	-7989.70	1749541.25	14622382.00	40°15'43.2083"N	80°36'31.8301"W	16023.22	330.090	0.36	0.16	-0.32
22477.00	90.280	336.070	5711.46	15984.75	13971.34	-8026.35	1749504.61	14622464.17	40°15'44.0221"N	80°36'32.2981"W	16112.75	330.123	0.28	-0.17	0.22
22568.00	90.280	336.040	5711.01	16075.72	14054.51	-8063.28	1749467.69	14622547.31	40°15'44.8456"N	80°36'32.7698"W	16203.26	330.156	0.03	0.00	-0.03
22659.00	90.060	335.850	5710.74	16166.69	14137.60	-8100.37	1749430.61	14622630.37	40°15'45.6684"N	80°36'33.2435"W	16293.80	330.189	0.32	-0.24	-0.21
22749.00	90.090	335.970	5710.63	16256.67	14219.76	-8137.11	1749393.89	14622712.50	40°15'46.4819"N	80°36'33.7127"W	16383.35	330.220	0.14	0.03	0.13
22840.00	90.280	338.370	5710.33	16347.66	14303.63	-8172.41	1749358.60	14622796.33	40°15'47.3121"N	80°36'34.1633"W	16473.68	330.258	2.65	0.21	2.64
22931.00	90.220	338.340	5709.94	16438.64	14388.21	-8205.98	1749325.05	14622880.88	40°15'48.1494"N	80°36'34.5915"W	16563.78	330.303	0.07	-0.07	-0.03
23021.00	90.280	338.350	5709.54	16528.63	14471.86	-8239.19	1749291.85	14622964.50	40°15'48.9774"N	80°36'35.0152"W	16652.90	330.346	0.07	0.07	0.01
23112.00	90.430	338.100	5708.98	16619.62	14556.36	-8272.95	1749258.11	14623048.97	40°15'49.8140"N	80°36'35.4458"W	16743.04	330.389	0.32	0.16	-0.27
23204.00	90.400	338.300	5708.31	16711.60	14641.78	-8307.11	1749223.96	14623134.36	40°15'50.6595"N	80°36'35.8817"W	16834.19	330.431	0.22	-0.03	0.22

REFERENCE WELLPATH IDENTIFICATION

Operator	SWN PRODUCTION COMPANY, LLC	Well	John Good Jr BRK 401H
Field	Brooke	API/Legal	
Facility	John Good Jr BRK Pad	Wellbore	John Good Jr BRK 401H AWB
Slot	Slot #401H		

WELLPATH DATA (289 stations) † = interpolated, ‡ = extrapolated station

MD [ft]	Inclination [°]	Azimuth [°]	TVD [ft]	Vert Sect [ft]	North [ft]	East [ft]	Grid East [US ft]	Grid North [US ft]	Latitude	Longitude	Closure Dist [ft]	Closure Dir [°]	DLS [°/100ft]	Build Rate [°/100ft]	Turn Rate [°/100ft]
23294.00	90.340	338.170	5707.73	16801.59	14725.36	-8340.48	1749190.60	14623217.91	40°15'51.4869"N	80°36'36.3074"W	16923.36	330.473	0.16	-0.07	-0.14
23385.00	90.180	338.250	5707.32	16892.58	14809.86	-8374.26	1749156.83	14623302.37	40°15'52.3234"N	80°36'36.7383"W	17013.53	330.514	0.20	-0.18	0.09
23475.00	90.280	338.190	5706.96	16982.57	14893.44	-8407.66	1749123.45	14623385.91	40°15'53.1507"N	80°36'37.1643"W	17102.72	330.554	0.13	0.11	-0.07
23566.00	90.370	338.350	5706.44	17073.55	14977.97	-8441.35	1749089.77	14623470.41	40°15'53.9875"N	80°36'37.5941"W	17192.90	330.595	0.20	0.10	0.18
23656.00	90.150	338.250	5706.03	17163.54	15061.59	-8474.63	1749056.51	14623554.00	40°15'54.8153"N	80°36'38.0187"W	17282.09	330.635	0.27	-0.24	-0.11
23748.00	90.460	338.420	5705.54	17255.53	15147.09	-8508.59	1749022.56	14623639.47	40°15'55.6616"N	80°36'38.4519"W	17373.27	330.676	0.38	0.34	0.18
23839.00	90.400	338.310	5704.86	17346.51	15231.68	-8542.14	1748989.02	14623724.02	40°15'56.4990"N	80°36'38.8799"W	17463.45	330.716	0.14	-0.07	-0.12
23931.00	90.250	338.400	5704.34	17438.49	15317.19	-8576.07	1748955.10	14623809.50	40°15'57.3454"N	80°36'39.3128"W	17554.64	330.756	0.19	-0.16	0.10
24021.00	90.280	338.590	5703.92	17528.47	15400.92	-8609.07	1748922.12	14623893.20	40°15'58.1743"N	80°36'39.7337"W	17643.82	330.795	0.21	0.03	0.21
24114.00	90.120	338.150	5703.60	17621.46	15487.37	-8643.35	1748887.85	14623979.62	40°15'59.0301"N	80°36'40.1710"W	17736.01	330.835	0.50	-0.17	-0.47
24205.00	90.280	338.200	5703.28	17712.45	15571.85	-8677.18	1748854.04	14624064.06	40°15'59.8663"N	80°36'40.6026"W	17826.27	330.872	0.18	0.18	0.05
24295.00	90.370	338.370	5702.77	17802.44	15655.46	-8710.48	1748820.75	14624147.64	40°16'0.6940"N	80°36'41.0275"W	17915.52	330.909	0.21	0.10	0.19
24386.00	90.310	339.310	5702.23	17893.40	15740.32	-8743.32	1748787.91	14624232.47	40°16'1.5340"N	80°36'41.4464"W	18005.65	330.949	1.04	-0.07	1.03
24477.00	90.310	339.680	5701.74	17984.34	15825.55	-8775.20	1748756.05	14624317.67	40°16'2.3777"N	80°36'41.8528"W	18095.64	330.992	0.41	0.00	0.41
24568.00	90.400	339.610	5701.17	18075.26	15910.87	-8806.85	1748724.41	14624402.95	40°16'3.2221"N	80°36'42.2563"W	18185.61	331.035	0.13	0.10	-0.08
24658.00	90.310	339.630	5700.62	18165.19	15995.24	-8838.19	1748693.08	14624487.29	40°16'4.0571"N	80°36'42.6558"W	18274.61	331.077	0.10	-0.10	0.02
24751.00	90.000	339.070	5700.36	18258.13	16082.26	-8870.99	1748660.30	14624574.28	40°16'4.9185"N	80°36'43.0740"W	18366.64	331.119	0.69	-0.33	-0.60
24780.00	90.090	339.120	5700.34	18287.12	16109.35	-8881.34	1748649.95	14624601.36	40°16'5.1867"N	80°36'43.2059"W	18395.36	331.131	0.36	0.31	0.17
24805.00†	90.090	339.120	5700.30	18312.11	16132.71	-8890.25	1748641.05	14624624.71	40°16'5.4179"N	80°36'43.3196"W	18420.12	331.142	0.00	0.00	0.00



Actual Wellpath Report

John Good Jr BRK 401H AWP Proj: 24805'
Page 12 of 14



REFERENCE WELLPATH IDENTIFICATION			
Operator	SWN PRODUCTION COMPANY, LLC	Well	John Good Jr BRK 401H
Field	Brooke	API/Legal	
Facility	John Good Jr BRK Pad	Wellbore	John Good Jr BRK 401H AWB
Slot	Slot #401H		

HOLE & CASING SECTIONS - Ref Wellbore: John Good Jr BRK 401H AWB Ref Wellpath: John Good Jr BRK 401H AWP Proj: 24805'									
String/Diameter	Start MD [ft]	End MD [ft]	Interval [ft]	Start TVD [ft]	End TVD [ft]	Start N/S [ft]	Start E/W [ft]	End N/S [ft]	End E/W [ft]
20in Conductor	26.00	126.00	100.00	26.00	126.00	0.00	0.00	0.41	-0.38
17.5in Open Hole	126.00	388.00	262.00	126.00	388.00	0.41	-0.38	1.05	-1.20
13.375in Casing Surface	26.00	388.00	362.00	26.00	388.00	0.00	0.00	1.05	-1.20
12.25in Open Hole	388.00	1660.00	1272.00	388.00	1647.14	1.05	-1.20	-67.17	-97.01
9.625in Casing Intermediate	26.00	1660.00	1634.00	26.00	1647.14	0.00	0.00	-67.17	-97.01
8.75in Open Hole	1660.00	5325.00	3665.00	1647.14	4961.94	-67.17	-97.01	-1028.81	-1316.74
8.5in Open Hole	5325.00	24805.00	19480.00	4961.94	5700.30	-1028.81	-1316.74	16132.71	-8890.25
5.5in Casing Production	26.00	24805.00	24779.00	26.00	5700.30	0.00	0.00	16132.71	-8890.25

TARGETS								
Name	TVD [ft]	North [ft]	East [ft]	Grid East [US ft]	Grid North [US ft]	Latitude	Longitude	Shape
John Good BRK 401H BHL Rev-7	5698.82	16131.29	-8895.75	1748635.55	14624623.29	40°16'5.4041"N	80°36'43.3906"W	point
John Good BRK 401H LP Rev-4	5888.00	-523.99	-1945.45	1755583.16	14607974.44	40°13'20.5097"N	80°35'14.7305"W	point

REFERENCE WELLPATH IDENTIFICATION			
Operator	SWN PRODUCTION COMPANY, LLC	Well	John Good Jr BRK 401H
Field	Brooke	API/Legal	
Facility	John Good Jr BRK Pad	Wellbore	John Good Jr BRK 401H AWB
Slot	Slot #401H		

WELLPATH COMPOSITION - Ref Wellbore: John Good Jr BRK 401H AWB Ref Wellpath: John Good Jr BRK 401H AWP Proj: 24805'					
Start MD [ft]	End MD [ft]	Positional Uncertainty Model	Log Name/Comment	Wellbore	Survey Date
26.00	350.00	Gyrodata 2015 - GC+WIR+DPIPE	01 Gyrodata <17-1/2"> (50'-350')	John Good Jr BRK 401H AWB	5/20/2021
350.00	504.00	Gyrodata 2015 - GC+WIR+DPIPE	02 Gyrodata <12-1/4"> (400'-504')	John Good Jr BRK 401H AWB	5/20/2021
504.00	1596.00	OWSG MWD rev2 + HRGM	03 Premier MWD <12-1/4"> (526'-1596')	John Good Jr BRK 401H AWB	5/20/2021
1596.00	5260.00	OWSG MWD rev2 + HRGM	04 Premier MWD <8-3/4"> (1717'-5260')	John Good Jr BRK 401H AWB	5/20/2021
5260.00	24805.00	BH AutoTrak Curve/eXpress (2019) (HRGM, Short spacing)	05 BH AT Curve <8-1/2"> (5363'-24780')	John Good Jr BRK 401H AWB	5/20/2021

REFERENCE WELLPATH IDENTIFICATION			
Operator	SWN PRODUCTION COMPANY, LLC	Well	John Good Jr BRK 401H
Field	Brooke	API/Legal	
Facility	John Good Jr BRK Pad	Wellbore	John Good Jr BRK 401H AWB
Slot	Slot #401H		

COMMENTS
<p>Wellpath general comments API: 47-009-00327-0000 BH Job #: 110870166 Rig: SDC 40 Duration: 05/21/2021 - 05/26/2021</p>