



SWN PRODUCTION COMPANY, LLC

Location: Brooke County, WV
Field: Brooke
Facility: Nick Ballato BRK Pad

Slot: 10H
Well: Nick Ballato BRK 10H
Wellbore: Nick Ballato BRK 10H AWB



Proj reference wellpath is Nick Ballato BRK 10H awp Proj: 30189'	Grid System: NAD83 / UTM Zone 17 North, US feet
True vertical depths are referenced to SDC 40 (KB)	North Reference: Grid north
Reference wellpath measured depths are referenced to SDC 40 (KB)	Scale: True distance
SDC 40 (KB) to Mean Sea Level: 984.9 feet	Coordinates are in feet referenced to Slot
Mean Sea Level to Ground level (At Slot: 10H): -958.9 feet	Depths are in feet
Offset wellpath MDs are referenced to each path's default MD datum	Created by: tranlam on 2023-06-20; Database: WA_MPL_EASTERNUS_Defn

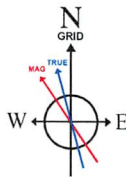
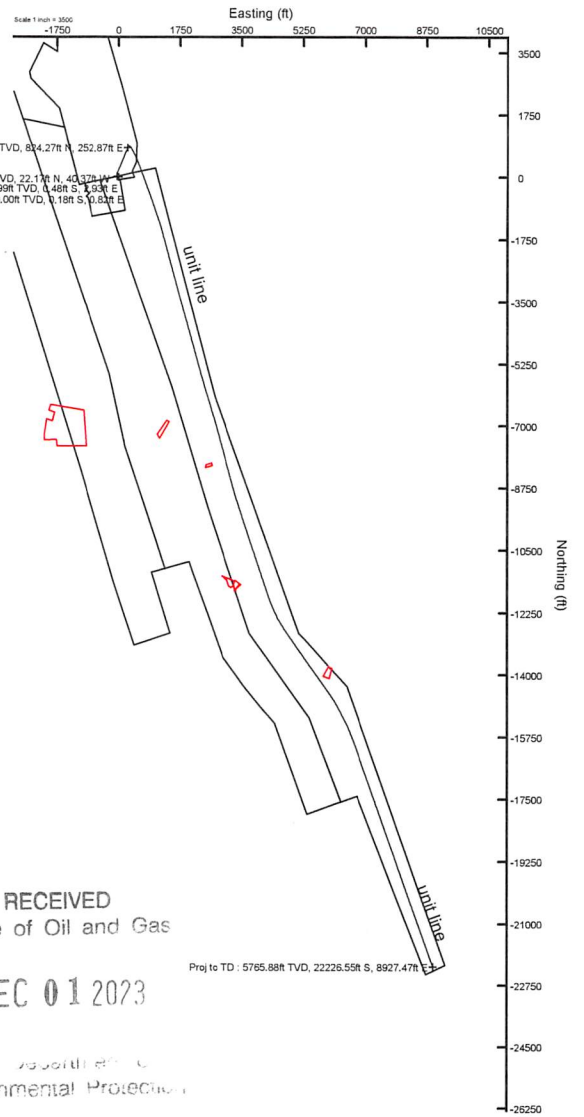
Location Information

Facility Name			Grid East (US ft)	Grid North (US ft)	Latitude	Longitude
Nick Ballato BRK Pad			1761605.576	14640074.751	40°18'37.5550"N	80°33'55.0330"W
Slot	Local N (ft)	Local E (ft)	Grid East (US ft)	Grid North (US ft)	Latitude	Longitude
10H	-19.45	-9.93	1761595.650	14640055.310	40°18'37.3633"N	80°33'55.1624"W
SDC 40 (KB) to Ground level (At Slot: 10H)					26ft	
Mean Sea Level to Ground level (At Slot: 10H)					-958.9ft	
SDC 40 (KB) to Mean Sea Level					984.9ft	

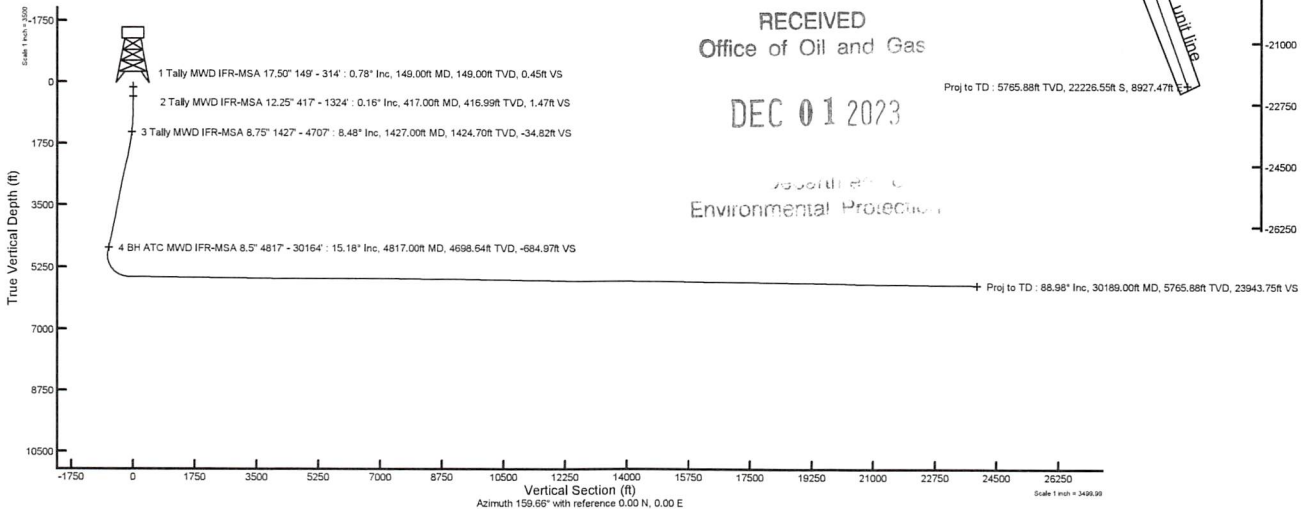
Bottom Hole Location

MD (ft)	Inc (°)	Az (°)	TVD (ft)	Local N (ft)	Local E (ft)	Grid East (US ft)	Grid North (US ft)	Latitude	Longitude
30189.00	88.980	160.370	5765.88	-22226.55	8927.47	1770519.68	14617837.32	40°14'57.2787"N	80°32'1.4355"W

API: 47009003350000
 BH JOB: 111821978
 DURATION: 06.13.2023 to 06.19.2023
 RIG: SDC 40



User specified Dip: 67.19° Field: 51999 nT
 Magnetic North is 8.74 degrees West of True North (at 6/6/2023)
 Grid North is 0.28 degrees East of True North
 To correct azimuth from True to Grid subtract 0.28 degrees
 To correct azimuth from Magnetic to Grid subtract 9.02 degrees



RECEIVED
Office of Oil and Gas

DEC 01 2023

Environmental Protection



Actual Wellpath Report

Nick Ballato BRK 10H awp Proj: 30189'
Page 1 of 14

RECEIVED
Office of Oil and Gas

DEC 01 2023

WV Department of
Environmental Protection



REFERENCE WELLPATH IDENTIFICATION			
Operator	SWN PRODUCTION COMPANY, LLC	Well	Nick Ballato BRK 10H
Field	Brooke	API	47009003350000
Facility	Nick Ballato BRK Pad	Wellbore	Nick Ballato BRK 10H AWB
Slot	10H		

REPORT SETUP INFORMATION			
Projection System	NAD83 / UTM Zone 17 North, US feet	Software System	WellArchitect® 6.0
North Reference	Grid	User	Tranlam
Scale	0.999617	Report Generated	6/20/2023 at 3:33:21 PM
Convergence at slot	0.28° East	Database	WA_MPL_EASTERNUS_Defn

WELLPATH LOCATION						
	Local coordinates		Grid coordinates		Geographic coordinates	
	North[ft]	East[ft]	Easting[US ft]	Northing[US ft]	Latitude	Longitude
Slot Location	-19.45	-9.93	1761595.65	14640055.31	40°18'37.3633"N	80°33'55.1624"W
Facility Reference Pt			1761605.58	14640074.75	40°18'37.5550"N	80°33'55.0330"W
Field Reference Pt			0.00	0.00	0°00'0.0000"	85°29'19.4780"W

WELLPATH DATUM			
Calculation method	Minimum curvature	SDC 40 (KB) to Facility Vertical Datum	984.90ft
Horizontal Reference Pt	Slot	SDC 40 (KB) to Mean Sea Level	984.90ft
Vertical Reference Pt	SDC 40 (KB)	SDC 40 (KB) to Ground Level at Slot (10H)	26.00ft
MD Reference Pt	SDC 40 (KB)	Section Origin	N 0.00, E 0.00 ft
Field Vertical Reference	Mean Sea Level	Section Azimuth	159.66°



Actual Wellpath Report

Nick Ballato BRK 10H awp Proj: 30189'
Page 2 of 14

RECEIVED
Office of Oil and Gas

DEC 01 2023

WV Department of
Environmental Protection



REFERENCE WELLPATH IDENTIFICATION			
Operator	SWN PRODUCTION COMPANY, LLC	Well	Nick Ballato BRK 10H
Field	Brooke	API	47009003350000
Facility	Nick Ballato BRK Pad	Wellbore	Nick Ballato BRK 10H AWB
Slot	10H		

WELLPATH DATA (316 stations) † = interpolated, ‡ = extrapolated station														
MD [ft]	Inclination [°]	Azimuth [°]	TVD [ft]	Vert Sect [ft]	North [ft]	East [ft]	Grid East [US ft]	Grid North [US ft]	Latitude	Longitude	Closure Dist [ft]	Closure Dir [°]	DLS [°/100ft]	Comments
0.00†	0.000	102.370	0.00	0.00	0.00	0.00	1761595.65	14640055.31	40°18'37.3633"N	80°33'55.1624"W	0.00	0.000	0.00	
26.00	0.000	102.370	26.00	0.00	0.00	0.00	1761595.65	14640055.31	40°18'37.3633"N	80°33'55.1624"W	0.00	0.000	0.00	
149.00	0.780	102.370	149.00	0.45	-0.18	0.82	1761596.47	14640055.13	40°18'37.3615"N	80°33'55.1519"W	0.84	102.370	0.63	
238.00	0.610	95.120	237.99	0.98	-0.35	1.88	1761597.53	14640054.96	40°18'37.3597"N	80°33'55.1381"W	1.91	100.580	0.21	
314.00	0.330	104.050	313.99	1.28	-0.44	2.50	1761598.15	14640054.87	40°18'37.3588"N	80°33'55.1302"W	2.54	100.009	0.38	
417.00	0.160	78.530	416.99	1.47	-0.48	2.93	1761598.57	14640054.83	40°18'37.3584"N	80°33'55.1247"W	2.97	99.396	0.19	
507.00	0.500	260.480	506.99	1.42	-0.52	2.66	1761598.31	14640054.79	40°18'37.3580"N	80°33'55.1281"W	2.71	101.140	0.73	
598.00	0.910	269.060	597.98	1.10	-0.60	1.55	1761597.20	14640054.71	40°18'37.3573"N	80°33'55.1425"W	1.66	111.247	0.46	
689.00	1.240	258.360	688.96	0.71	-0.81	-0.14	1761595.51	14640054.50	40°18'37.3553"N	80°33'55.1643"W	0.82	189.771	0.42	
779.00	1.780	258.720	778.93	0.35	-1.28	-2.46	1761593.19	14640054.03	40°18'37.3507"N	80°33'55.1943"W	2.78	242.517	0.60	
870.00	1.640	263.550	869.89	-0.19	-1.70	-5.14	1761590.51	14640053.61	40°18'37.3467"N	80°33'55.2289"W	5.42	251.667	0.22	
962.00	1.560	273.090	961.85	-1.00	-1.79	-7.70	1761587.95	14640053.53	40°18'37.3460"N	80°33'55.2620"W	7.91	256.953	0.30	
1052.00	2.360	297.380	1051.80	-2.86	-0.87	-10.57	1761585.08	14640054.44	40°18'37.3552"N	80°33'55.2989"W	10.61	265.313	1.26	
1143.00	4.000	303.930	1142.66	-6.82	1.77	-14.87	1761580.79	14640057.08	40°18'37.3815"N	80°33'55.3542"W	14.97	276.776	1.84	
1233.00	6.030	303.830	1232.31	-13.21	6.15	-21.40	1761574.26	14640061.46	40°18'37.4251"N	80°33'55.4383"W	22.27	286.035	2.26	
1324.00	7.400	310.500	1322.69	-22.20	12.62	-29.83	1761565.83	14640067.92	40°18'37.4894"N	80°33'55.5466"W	32.39	292.930	1.73	
1427.00	8.480	313.640	1424.70	-34.82	22.17	-40.37	1761555.30	14640077.47	40°18'37.5843"N	80°33'55.6821"W	46.05	298.772	1.13	
1518.00	6.880	325.930	1514.88	-46.14	31.31	-48.28	1761547.39	14640086.61	40°18'37.6751"N	80°33'55.7836"W	57.54	302.968	2.51	
1609.00	7.530	346.360	1605.18	-57.36	41.63	-52.74	1761542.93	14640096.92	40°18'37.7772"N	80°33'55.8405"W	67.19	308.283	2.89	
1701.00	9.980	1.890	1696.11	-70.73	55.46	-53.90	1761541.77	14640110.74	40°18'37.9139"N	80°33'55.8546"W	77.33	315.816	3.68	
1791.00	11.740	10.200	1784.50	-85.84	72.26	-52.02	1761543.65	14640127.55	40°18'38.0799"N	80°33'55.8293"W	89.04	324.252	2.61	
1882.00	12.750	15.990	1873.44	-101.90	91.03	-47.61	1761548.06	14640146.30	40°18'38.2651"N	80°33'55.7712"W	102.73	332.388	1.75	
1973.00	13.470	21.980	1962.07	-117.83	110.51	-40.88	1761554.79	14640165.78	40°18'38.4573"N	80°33'55.6831"W	117.83	339.700	1.69	
2064.00	15.350	23.930	2050.20	-134.29	131.35	-32.03	1761563.64	14640186.61	40°18'38.6628"N	80°33'55.5675"W	135.20	346.297	2.13	
2156.00	17.300	23.880	2138.49	-152.82	154.99	-21.55	1761574.11	14640210.24	40°18'38.8959"N	80°33'55.4307"W	156.48	352.085	2.12	
2246.00	18.260	21.150	2224.19	-172.97	180.38	-11.04	1761584.61	14640235.62	40°18'39.1463"N	80°33'55.2935"W	180.72	356.496	1.41	
2338.00	17.590	23.160	2311.72	-193.85	206.60	-0.38	1761595.27	14640261.83	40°18'39.4049"N	80°33'55.1542"W	206.60	359.896	0.99	
2429.00	16.990	24.090	2398.61	-213.32	231.38	10.46	1761606.11	14640286.60	40°18'39.6492"N	80°33'55.0127"W	231.62	2.588	0.73	
2523.00	16.450	19.990	2488.64	-233.27	256.43	20.62	1761616.26	14640311.64	40°18'39.8962"N	80°33'54.8801"W	257.26	4.596	1.38	
2615.00	16.390	22.490	2576.89	-252.72	280.66	30.03	1761625.67	14640335.87	40°18'40.1353"N	80°33'54.7569"W	282.27	6.108	0.77	



Actual Wellpath Report

Nick Ballato BRK 10H awp Proj: 30189'
Page 3 of 14

RECEIVED
Office of Oil and Gas
DEC 01 2023

Department of
Environmental Protection



REFERENCE WELLPATH IDENTIFICATION				
Operator	SWN PRODUCTION COMPANY, LLC		Well	Nick Ballato BRK 10H
Field	Brooke		API	47009003350000
Facility	Nick Ballato BRK Pad		Wellbore	Nick Ballato BRK 10H AWB
Slot	10H			

WELLPATH DATA (316 stations)														
MD [ft]	Inclination [°]	Azimuth [°]	TVD [ft]	Vert Sect [ft]	North [ft]	East [ft]	Grid East [US ft]	Grid North [US ft]	Latitude	Longitude	Closure Dist [ft]	Closure Dir [°]	DLS [°/100ft]	Comments
2707.00	16.670	24.820	2665.09	-271.55	304.63	40.54	1761636.17	14640359.83	40°18'40.3716"N	80°33'54.6198"W	307.32	7.580	0.78	
2797.00	16.270	21.370	2751.40	-290.06	328.09	50.55	1761646.18	14640383.27	40°18'40.6029"N	80°33'54.4891"W	331.96	8.759	1.17	
2887.00	14.940	19.310	2838.08	-308.41	350.78	58.98	1761654.61	14640405.96	40°18'40.8267"N	80°33'54.3788"W	355.71	9.545	1.60	
2979.00	15.260	23.290	2926.90	-326.30	373.09	67.69	1761663.31	14640428.26	40°18'41.0468"N	80°33'54.2650"W	379.19	10.283	1.18	
3070.00	15.610	23.720	3014.62	-343.77	395.30	77.35	1761672.97	14640450.46	40°18'41.2658"N	80°33'54.1389"W	402.80	11.071	0.40	
3161.00	15.560	25.670	3102.28	-361.04	417.51	87.56	1761683.18	14640472.66	40°18'41.4848"N	80°33'54.0057"W	426.60	11.845	0.58	
3251.00	14.560	23.460	3189.18	-377.59	438.77	97.30	1761692.91	14640493.91	40°18'41.6944"N	80°33'53.8787"W	449.43	12.503	1.28	
3342.00	14.850	20.200	3277.21	-394.71	460.21	105.88	1761701.49	14640515.34	40°18'41.9058"N	80°33'53.7666"W	472.23	12.956	0.96	
3432.00	15.370	22.360	3364.09	-412.24	482.06	114.40	1761710.00	14640537.19	40°18'42.1213"N	80°33'53.6552"W	495.45	13.350	0.85	
3523.00	15.280	25.050	3451.86	-429.53	504.08	124.06	1761719.66	14640559.20	40°18'42.3384"N	80°33'53.5290"W	519.12	13.827	0.79	
3614.00	13.330	21.820	3540.04	-445.73	524.68	133.04	1761728.64	14640579.79	40°18'42.5416"N	80°33'53.4119"W	541.29	14.228	2.31	
3708.00	13.170	22.290	3631.53	-461.64	544.65	141.13	1761736.72	14640599.75	40°18'42.7385"N	80°33'53.3062"W	562.64	14.527	0.21	
3799.00	14.280	19.680	3719.93	-477.86	564.81	148.84	1761744.43	14640619.91	40°18'42.9374"N	80°33'53.2053"W	584.10	14.763	1.40	
3891.00	15.410	21.910	3808.86	-495.60	586.84	157.22	1761752.81	14640641.92	40°18'43.1546"N	80°33'53.0957"W	607.53	14.998	1.38	
3982.00	15.750	23.240	3896.52	-513.49	609.40	166.61	1761762.19	14640664.48	40°18'43.3771"N	80°33'52.9732"W	631.77	15.291	0.54	
4072.00	15.610	20.170	3983.17	-531.55	631.99	175.60	1761771.19	14640687.06	40°18'43.5999"N	80°33'52.8556"W	655.94	15.528	0.93	
4163.00	15.320	17.070	4070.88	-550.41	654.98	183.35	1761778.93	14640710.04	40°18'43.8267"N	80°33'52.7541"W	680.16	15.639	0.96	
4254.00	15.890	20.240	4158.52	-569.42	678.16	191.19	1761786.77	14640733.21	40°18'44.0554"N	80°33'52.6514"W	704.60	15.745	1.13	
4344.00	16.600	26.100	4244.94	-587.64	701.27	201.11	1761796.68	14640756.31	40°18'44.2832"N	80°33'52.5219"W	729.53	16.002	1.98	
4435.00	16.390	25.760	4332.19	-605.50	724.50	212.41	1761807.98	14640779.53	40°18'44.5123"N	80°33'52.3746"W	755.00	16.340	0.25	
4525.00	16.480	25.880	4418.51	-623.13	747.42	223.50	1761819.06	14640802.45	40°18'44.7382"N	80°33'52.2300"W	780.13	16.648	0.11	
4617.00	17.060	23.440	4506.60	-641.91	771.55	234.56	1761830.12	14640826.56	40°18'44.9761"N	80°33'52.0856"W	806.42	16.910	0.99	
4707.00	16.410	18.300	4592.80	-661.37	795.73	243.81	1761839.36	14640850.73	40°18'45.2146"N	80°33'51.9648"W	832.24	17.035	1.80	
4817.00	15.180	16.880	4698.64	-684.97	824.27	252.87	1761848.42	14640879.26	40°18'45.4961"N	80°33'51.8460"W	862.18	17.055	1.17	
4908.00	15.980	18.270	4786.30	-704.25	847.56	260.26	1761855.81	14640902.55	40°18'45.7260"N	80°33'51.7492"W	886.62	17.070	0.97	
5001.00	10.950	45.770	4876.80	-717.85	865.91	270.62	1761866.16	14640920.89	40°18'45.9068"N	80°33'51.6143"W	907.21	17.355	8.61	
5098.00	12.330	89.440	4971.98	-718.08	872.45	287.61	1761883.14	14640927.42	40°18'45.9706"N	80°33'51.3946"W	918.63	18.245	8.97	
5194.00	17.270	124.430	5064.95	-702.93	864.47	309.66	1761905.20	14640919.45	40°18'45.8907"N	80°33'51.1103"W	918.26	19.708	10.41	
5291.00	23.310	141.920	5155.97	-672.84	841.18	333.42	1761928.94	14640896.17	40°18'45.6594"N	80°33'50.8051"W	904.85	21.622	8.76	
5388.00	31.590	145.260	5241.98	-629.87	805.13	359.78	1761955.29	14640860.13	40°18'45.3019"N	80°33'50.4671"W	881.86	24.078	8.68	



Actual Wellpath Report

Nick Ballato BRK 10H awp Proj: 30189'
Page 4 of 14

RECEIVED
 Office of Oil and Gas
 DEC 01 2023
 WV Department of
 Environmental Protection



REFERENCE WELLPATH IDENTIFICATION			
Operator	SWN PRODUCTION COMPANY, LLC	Well	Nick Ballato BRK 10H
Field	Brooke	API	47009003350000
Facility	Nick Ballato BRK Pad	Wellbore	Nick Ballato BRK 10H AWB
Slot	10H		

WELLPATH DATA (316 stations)														
MD [ft]	Inclination [°]	Azimuth [°]	TVD [ft]	Vert Sect [ft]	North [ft]	East [ft]	Grid East [US ft]	Grid North [US ft]	Latitude	Longitude	Closure Dist [ft]	Closure Dir [°]	DLS [°/100ft]	Comments
5484.00	41.830	150.670	5318.86	-573.74	756.42	389.88	1761985.38	14640811.44	40°18'44.8190"N	80°33'50.0817"W	850.99	27.268	11.18	
5581.00	50.900	152.740	5385.73	-504.27	694.63	423.04	1762018.52	14640749.67	40°18'44.2068"N	80°33'49.6577"W	813.31	31.342	9.48	
5677.00	59.810	153.920	5440.25	-425.85	624.11	458.41	1762053.88	14640679.18	40°18'43.5082"N	80°33'49.2055"W	774.37	36.297	9.34	
5774.00	68.240	156.180	5482.70	-339.02	545.10	495.10	1762090.56	14640600.20	40°18'42.7257"N	80°33'48.7369"W	736.38	42.248	8.94	
5870.00	77.260	157.800	5511.14	-247.53	460.79	530.87	1762126.32	14640515.92	40°18'41.8908"N	80°33'48.2806"W	702.96	49.043	9.53	
5967.00	85.350	158.940	5525.79	-151.75	371.73	566.18	1762161.61	14640426.89	40°18'41.0090"N	80°33'47.8305"W	677.30	56.713	8.42	
6063.00	89.010	158.930	5530.51	-55.89	282.26	600.63	1762196.05	14640337.47	40°18'40.1233"N	80°33'47.3914"W	663.65	64.829	3.81	
6160.00	88.950	158.500	5532.24	41.08	191.90	635.84	1762231.24	14640247.13	40°18'39.2286"N	80°33'46.9427"W	664.16	73.206	0.45	
6257.00	89.510	159.960	5533.54	138.07	101.21	670.23	1762265.62	14640156.48	40°18'38.3308"N	80°33'46.5045"W	677.83	81.413	1.61	
6354.00	90.220	159.510	5533.77	235.07	10.22	703.83	1762299.21	14640065.52	40°18'37.4300"N	80°33'46.0767"W	703.90	89.168	0.87	
6451.00	89.350	160.130	5534.13	332.06	-80.83	737.29	1762332.66	14639974.51	40°18'36.5287"N	80°33'45.6505"W	741.71	96.256	1.10	
6547.00	89.200	160.010	5535.35	428.05	-171.07	770.01	1762365.37	14639884.30	40°18'35.6354"N	80°33'45.2339"W	788.79	102.526	0.20	
6644.00	89.290	159.720	5536.63	525.04	-262.13	803.40	1762398.74	14639793.28	40°18'34.7339"N	80°33'44.8088"W	845.08	108.071	0.31	
6740.00	89.420	159.820	5537.71	621.04	-352.21	836.59	1762431.92	14639703.24	40°18'33.8422"N	80°33'44.3860"W	907.71	112.831	0.17	
6837.00	89.780	159.710	5538.39	718.03	-443.22	870.14	1762465.46	14639612.26	40°18'32.9412"N	80°33'43.9588"W	976.52	116.993	0.39	
6933.00	89.780	160.290	5538.75	814.03	-533.43	902.98	1762498.28	14639522.09	40°18'32.0482"N	80°33'43.5408"W	1048.77	120.572	0.60	
7029.00	89.290	160.540	5539.53	910.02	-623.87	935.15	1762530.44	14639431.68	40°18'31.1529"N	80°33'43.1312"W	1124.16	123.708	0.57	
7126.00	89.600	160.690	5540.47	1007.00	-715.37	967.35	1762562.63	14639340.22	40°18'30.2472"N	80°33'42.7215"W	1203.13	126.483	0.36	
7223.00	89.420	160.940	5541.30	1103.98	-806.98	999.22	1762594.49	14639248.64	40°18'29.3404"N	80°33'42.3159"W	1284.39	128.924	0.32	
7319.00	89.780	161.310	5541.97	1199.94	-897.81	1030.28	1762625.53	14639157.84	40°18'28.4412"N	80°33'41.9208"W	1366.58	131.070	0.54	
7416.00	89.630	160.750	5542.47	1296.91	-989.54	1061.81	1762657.05	14639066.15	40°18'27.5333"N	80°33'41.5197"W	1451.42	132.982	0.60	
7512.00	89.290	160.610	5543.38	1392.90	-1080.13	1093.57	1762688.80	14638975.60	40°18'26.6365"N	80°33'41.1155"W	1537.07	134.646	0.38	
7608.00	89.170	160.650	5544.67	1488.87	-1170.69	1125.41	1762720.62	14638885.07	40°18'25.7401"N	80°33'40.7104"W	1623.90	136.130	0.13	
7705.00	89.170	160.860	5546.07	1585.84	-1262.26	1157.38	1762752.58	14638793.54	40°18'24.8337"N	80°33'40.3036"W	1712.55	137.482	0.22	
7802.00	89.540	163.400	5547.16	1682.74	-1354.57	1187.14	1762782.33	14638701.27	40°18'23.9201"N	80°33'39.9254"W	1801.15	138.769	2.65	
7898.00	88.860	164.760	5548.50	1778.44	-1446.87	1213.47	1762808.65	14638609.00	40°18'23.0066"N	80°33'39.5914"W	1888.37	140.014	1.58	
7995.00	89.480	165.110	5549.91	1875.02	-1540.53	1238.67	1762833.85	14638515.38	40°18'22.0799"N	80°33'39.2721"W	1976.75	141.199	0.73	
8091.00	89.230	164.730	5550.99	1970.61	-1633.22	1263.65	1762858.81	14638422.72	40°18'21.1628"N	80°33'38.9556"W	2064.99	142.270	0.47	
8188.00	89.230	164.840	5552.29	2067.21	-1726.81	1289.10	1762884.26	14638329.17	40°18'20.2367"N	80°33'38.6331"W	2154.91	143.258	0.11	
8285.00	89.140	164.630	5553.67	2163.82	-1820.38	1314.64	1762909.78	14638235.64	40°18'19.3108"N	80°33'38.3095"W	2245.45	144.164	0.24	



Actual Wellpath Report

Nick Ballato BRK 10H awp Proj: 30189'
Page 5 of 14

RECEIVED
 Office of Oil and Gas
 DEC 01 2023
 WV Department of
 Environmental Protection



REFERENCE WELLPATH IDENTIFICATION			
Operator	SWN PRODUCTION COMPANY, LLC	Well	Nick Ballato BRK 10H
Field	Brooke	API	47009003350000
Facility	Nick Ballato BRK Pad	Wellbore	Nick Ballato BRK 10H AWB
Slot	10H		

WELLPATH DATA (316 stations)														
MD [ft]	Inclination [°]	Azimuth [°]	TVD [ft]	Vert Sect [ft]	North [ft]	East [ft]	Grid East [US ft]	Grid North [US ft]	Latitude	Longitude	Closure Dist [ft]	Closure Dir [°]	DLS [°/100ft]	Comments
8381.00	89.290	164.630	5554.99	2259.45	-1912.93	1340.08	1762935.22	14638143.11	40°18'18.3950"N	80°33'37.9870"W	2335.62	144.987	0.16	
8478.00	89.380	164.980	5556.11	2356.06	-2006.54	1365.50	1762960.63	14638049.55	40°18'17.4688"N	80°33'37.6649"W	2427.09	145.764	0.37	
8575.00	89.320	165.090	5557.21	2452.62	-2100.24	1390.55	1762985.66	14637955.88	40°18'16.5416"N	80°33'37.3476"W	2518.86	146.492	0.13	
8671.00	89.010	164.620	5558.61	2548.22	-2192.89	1415.63	1763010.73	14637863.26	40°18'15.6248"N	80°33'37.0298"W	2610.13	147.156	0.59	
8768.00	89.660	165.080	5559.74	2644.81	-2286.52	1440.98	1763036.07	14637769.67	40°18'14.6984"N	80°33'36.7087"W	2702.70	147.781	0.82	
8864.00	88.980	164.630	5560.88	2740.41	-2379.17	1466.06	1763061.14	14637677.05	40°18'13.7815"N	80°33'36.3909"W	2794.60	148.358	0.85	
8961.00	89.290	164.980	5562.34	2837.01	-2472.77	1491.48	1763086.55	14637583.49	40°18'12.8554"N	80°33'36.0688"W	2887.75	148.903	0.48	
9057.00	89.660	164.510	5563.22	2932.63	-2565.39	1516.74	1763111.80	14637490.91	40°18'11.9390"N	80°33'35.7488"W	2980.22	149.407	0.62	
9154.00	89.230	164.970	5564.16	3029.24	-2658.96	1542.26	1763137.32	14637397.37	40°18'11.0130"N	80°33'35.4253"W	3073.87	149.885	0.65	
9251.00	89.660	164.760	5565.10	3125.84	-2752.59	1567.59	1763162.64	14637303.78	40°18'10.0866"N	80°33'35.1044"W	3167.66	150.339	0.49	
9347.00	89.690	164.700	5565.65	3221.46	-2845.20	1592.87	1763187.91	14637211.21	40°18'9.1702"N	80°33'34.7840"W	3260.74	150.758	0.07	
9444.00	89.510	164.110	5566.32	3318.12	-2938.63	1618.95	1763213.98	14637117.81	40°18'8.2457"N	80°33'34.4535"W	3355.07	151.149	0.64	
9541.00	89.600	164.700	5567.08	3414.79	-3032.05	1645.03	1763240.04	14637024.42	40°18'7.3212"N	80°33'34.1229"W	3449.56	151.518	0.62	
9637.00	89.780	165.350	5567.60	3510.37	-3124.79	1669.83	1763264.84	14636931.72	40°18'6.4036"N	80°33'33.8087"W	3542.97	151.881	0.70	
9733.00	89.630	164.900	5568.09	3605.93	-3217.57	1694.47	1763289.47	14636838.98	40°18'5.4855"N	80°33'33.4966"W	3636.48	152.227	0.49	
9830.00	89.290	164.790	5569.00	3702.53	-3311.19	1719.83	1763314.82	14636745.39	40°18'4.5592"N	80°33'33.1753"W	3731.20	152.553	0.37	
9926.00	89.780	163.880	5569.78	3798.20	-3403.62	1745.75	1763340.73	14636653.00	40°18'3.6445"N	80°33'32.8467"W	3825.22	152.846	1.08	
10023.00	89.200	164.470	5570.65	3894.90	-3496.94	1772.20	1763367.17	14636559.71	40°18'2.7211"N	80°33'32.5114"W	3920.37	153.125	0.85	
10120.00	89.010	163.620	5572.16	3991.60	-3590.19	1798.86	1763393.82	14636466.50	40°18'1.7983"N	80°33'32.1733"W	4015.65	153.387	0.90	
10216.00	89.750	164.300	5573.20	4087.32	-3682.45	1825.39	1763420.33	14636374.28	40°18'0.8853"N	80°33'31.8369"W	4110.05	153.632	1.05	
10313.00	89.940	165.050	5573.46	4183.95	-3776.00	1851.02	1763445.96	14636280.76	40°17'59.9596"N	80°33'31.5120"W	4205.29	153.886	0.80	
10410.00	88.980	165.680	5574.38	4280.46	-3869.85	1875.53	1763470.46	14636186.95	40°17'59.0311"N	80°33'31.2018"W	4300.39	154.143	1.18	
10506.00	89.380	164.200	5575.75	4376.04	-3962.54	1900.47	1763495.39	14636094.30	40°17'58.1139"N	80°33'30.8858"W	4394.71	154.377	1.60	
10603.00	89.510	163.840	5576.69	4472.76	-4055.79	1927.17	1763522.08	14636001.09	40°17'57.1911"N	80°33'30.5472"W	4490.37	154.585	0.39	
10700.00	89.850	164.410	5577.23	4569.46	-4149.08	1953.71	1763548.60	14635907.82	40°17'56.2679"N	80°33'30.2108"W	4586.05	154.785	0.68	
10796.00	89.630	164.530	5577.67	4665.12	-4241.58	1979.41	1763574.30	14635815.37	40°17'55.3526"N	80°33'29.8850"W	4680.71	154.983	0.26	
10893.00	90.280	165.160	5577.75	4761.73	-4335.20	2004.77	1763599.65	14635721.78	40°17'54.4262"N	80°33'29.5638"W	4776.30	155.182	0.93	
10990.00	89.970	164.600	5577.53	4858.32	-4428.84	2030.07	1763624.94	14635628.17	40°17'53.4996"N	80°33'29.2433"W	4871.94	155.374	0.66	
11086.00	90.090	164.180	5577.48	4954.00	-4521.30	2055.90	1763650.76	14635535.75	40°17'52.5847"N	80°33'28.9158"W	4966.78	155.548	0.46	
11183.00	89.850	164.220	5577.53	5050.69	-4614.64	2082.31	1763677.16	14635442.45	40°17'51.6611"N	80°33'28.5810"W	5062.70	155.713	0.25	



Actual Wellpath Report

Nick Ballato BRK 10H awp Proj: 30189'
Page 6 of 14

RECEIVED
Office of Oil and Gas

DEC 01 2023

WV Department of Environmental Protection



REFERENCE WELLPATH IDENTIFICATION				
Operator	SWN PRODUCTION COMPANY, LLC		Well	Nick Ballato BRK 10H
Field	Brooke		API	47009003350000
Facility	Nick Ballato BRK Pad		Wellbore	Nick Ballato BRK 10H AWB
Slot	10H			

WELLPATH DATA (316 stations)														
MD [ft]	Inclination [°]	Azimuth [°]	TVD [ft]	Vert Sect [ft]	North [ft]	East [ft]	Grid East [US ft]	Grid North [US ft]	Latitude	Longitude	Closure Dist [ft]	Closure Dir [°]	DLS ["/100ft]	Comments
11280.00	89.780	164.370	5577.85	5147.37	-4708.02	2108.57	1763703.41	14635349.11	40°17'50.7371"N	80°33'28.2481"W	5158.63	155.874	0.17	
11376.00	90.400	165.290	5577.70	5242.98	-4800.67	2133.69	1763728.52	14635256.49	40°17'49.8202"N	80°33'27.9299"W	5253.48	156.037	1.16	
11473.00	89.970	164.340	5577.38	5339.59	-4894.28	2159.10	1763753.92	14635162.91	40°17'48.8940"N	80°33'27.6080"W	5349.36	156.195	1.08	
11570.00	90.310	164.290	5577.15	5436.27	-4987.67	2185.32	1763780.13	14635069.56	40°17'47.9698"N	80°33'27.2756"W	5445.41	156.340	0.35	
11666.00	90.340	164.440	5576.60	5531.94	-5080.12	2211.19	1763805.99	14634977.15	40°17'47.0550"N	80°33'26.9477"W	5540.48	156.478	0.16	
11763.00	90.060	164.870	5576.26	5628.57	-5173.66	2236.86	1763831.65	14634883.65	40°17'46.1294"N	80°33'26.6225"W	5636.51	156.618	0.53	
11860.00	89.660	164.310	5576.50	5725.21	-5267.17	2262.64	1763857.42	14634790.17	40°17'45.2041"N	80°33'26.2959"W	5732.59	156.753	0.71	
11956.00	89.910	164.510	5576.86	5820.88	-5359.64	2288.44	1763883.21	14634697.74	40°17'44.2891"N	80°33'25.9689"W	5827.75	156.879	0.33	
12053.00	89.940	164.390	5576.99	5917.54	-5453.09	2314.44	1763909.20	14634604.33	40°17'43.3644"N	80°33'25.6393"W	5923.92	157.002	0.13	
12150.00	89.880	164.400	5577.14	6014.21	-5546.51	2340.53	1763935.28	14634510.94	40°17'42.4399"N	80°33'25.3086"W	6020.12	157.121	0.06	
12246.00	90.090	164.440	5577.16	6109.88	-5638.98	2366.32	1763961.06	14634418.50	40°17'41.5248"N	80°33'24.9818"W	6115.36	157.235	0.22	
12343.00	89.850	163.350	5577.22	6206.61	-5732.17	2393.23	1763987.95	14634325.34	40°17'40.6026"N	80°33'24.6406"W	6211.71	157.339	1.15	
12439.00	89.910	163.790	5577.42	6302.39	-5824.25	2420.38	1764015.10	14634233.30	40°17'39.6914"N	80°33'24.2961"W	6307.15	157.434	0.46	
12535.00	90.000	163.810	5577.49	6398.14	-5916.44	2447.16	1764041.87	14634141.15	40°17'38.7791"N	80°33'23.9564"W	6402.57	157.529	0.10	
12632.00	89.780	163.190	5577.68	6494.92	-6009.45	2474.71	1764069.41	14634048.18	40°17'37.8587"N	80°33'23.6069"W	6499.05	157.618	0.68	
12728.00	90.120	163.790	5577.76	6590.71	-6101.49	2501.99	1764096.68	14633956.17	40°17'36.9478"N	80°33'23.2608"W	6594.55	157.703	0.72	
12825.00	89.510	163.530	5578.08	6687.47	-6194.57	2529.28	1764123.96	14633863.13	40°17'36.0266"N	80°33'22.9147"W	6691.03	157.789	0.68	
12921.00	89.420	163.160	5578.97	6783.27	-6286.54	2556.79	1764151.46	14633771.19	40°17'35.1165"N	80°33'22.5655"W	6786.59	157.868	0.40	
13018.00	89.880	163.770	5579.56	6880.05	-6379.52	2584.40	1764179.05	14633678.24	40°17'34.1962"N	80°33'22.2153"W	6883.13	157.947	0.79	
13114.00	89.480	162.900	5580.10	6975.85	-6471.49	2611.93	1764206.57	14633586.31	40°17'33.2861"N	80°33'21.8660"W	6978.71	158.021	1.00	
13211.00	90.250	163.470	5580.33	7072.67	-6564.34	2639.99	1764234.62	14633493.50	40°17'32.3672"N	80°33'21.5099"W	7075.32	158.091	0.99	
13307.00	89.910	163.260	5580.19	7168.46	-6656.32	2667.47	1764262.09	14633401.55	40°17'31.4569"N	80°33'21.1612"W	7170.92	158.162	0.42	
13404.00	89.050	161.720	5581.08	7265.34	-6748.82	2696.65	1764291.27	14633309.09	40°17'30.5414"N	80°33'20.7906"W	7267.63	158.220	1.82	
13500.00	89.630	163.680	5582.18	7361.19	-6840.47	2725.20	1764319.80	14633217.48	40°17'29.6344"N	80°33'20.4282"W	7363.33	158.278	2.13	
13597.00	89.910	164.220	5582.57	7457.92	-6933.68	2752.02	1764346.61	14633124.30	40°17'28.7119"N	80°33'20.0881"W	7459.86	158.352	0.63	
13693.00	89.260	164.530	5583.27	7553.59	-7026.13	2777.87	1764372.45	14633031.88	40°17'27.7971"N	80°33'19.7605"W	7555.34	158.428	0.75	
13789.00	89.480	164.770	5584.32	7649.22	-7118.70	2803.28	1764397.85	14632939.35	40°17'26.8811"N	80°33'19.4385"W	7650.77	158.506	0.34	
13886.00	89.380	164.360	5585.29	7745.86	-7212.20	2829.10	1764423.66	14632845.89	40°17'25.9559"N	80°33'19.1115"W	7747.23	158.582	0.44	
13982.00	90.060	164.930	5585.76	7841.50	-7304.77	2854.52	1764449.07	14632753.35	40°17'25.0398"N	80°33'18.7894"W	7842.70	158.656	0.92	
14079.00	89.170	164.740	5586.41	7938.10	-7398.39	2879.89	1764474.43	14632659.77	40°17'24.1135"N	80°33'18.4681"W	7939.14	158.731	0.94	



Actual Wellpath Report

Nick Ballato BRK 10H awp Proj: 30189'
Page 7 of 14

RECEIVED
Office of Oil and Gas

DEC 01 2023

NY Department of
Environmental Protection



REFERENCE WELLPATH IDENTIFICATION			
Operator	SWN PRODUCTION COMPANY, LLC	Well	Nick Ballato BRK 10H
Field	Brooke	API	47009003350000
Facility	Nick Ballato BRK Pad	Wellbore	Nick Ballato BRK 10H AWB
Slot	10H		

WELLPATH DATA (316 stations)														
MD [ft]	Inclination [°]	Azimuth [°]	TVD [ft]	Vert Sect [ft]	North [ft]	East [ft]	Grid East [US ft]	Grid North [US ft]	Latitude	Longitude	Closure Dist [ft]	Closure Dir [°]	DLS [°/100ft]	Comments
14176.00	89.450	164.560	5587.58	8034.72	-7491.92	2905.57	1764500.10	14632566.27	40°17'23.1879"N	80°33'18.1428"W	8035.62	158.802	0.34	
14272.00	89.350	164.470	5588.58	8130.37	-7584.43	2931.20	1764525.72	14632473.80	40°17'22.2725"N	80°33'17.8181"W	8131.15	158.870	0.14	
14369.00	89.450	164.330	5589.60	8227.04	-7677.85	2957.28	1764551.79	14632380.41	40°17'21.3481"N	80°33'17.4876"W	8227.69	158.935	0.18	
14465.00	89.720	164.310	5590.29	8322.72	-7770.28	2983.23	1764577.73	14632288.02	40°17'20.4334"N	80°33'17.1588"W	8323.27	158.997	0.28	
14562.00	89.350	164.510	5591.08	8419.38	-7863.71	3009.29	1764603.78	14632194.63	40°17'19.5089"N	80°33'16.8284"W	8419.84	159.059	0.43	
14658.00	89.230	164.370	5592.27	8515.04	-7956.18	3035.04	1764629.52	14632102.19	40°17'18.5938"N	80°33'16.5022"W	8515.42	159.120	0.19	
14755.00	89.260	164.210	5593.55	8611.71	-8049.55	3061.31	1764655.78	14632008.86	40°17'17.6699"N	80°33'16.1693"W	8612.02	159.178	0.17	
14851.00	89.630	164.590	5594.48	8707.38	-8142.01	3087.12	1764681.58	14631916.44	40°17'16.7550"N	80°33'15.8422"W	8707.62	159.235	0.55	
14948.00	89.510	164.570	5595.20	8804.02	-8235.51	3112.91	1764707.36	14631822.97	40°17'15.8297"N	80°33'15.5155"W	8804.20	159.294	0.13	
15045.00	89.480	164.970	5596.06	8900.63	-8329.10	3138.39	1764732.83	14631729.41	40°17'14.9036"N	80°33'15.1928"W	8900.76	159.354	0.41	
15141.00	89.480	164.800	5596.93	8996.23	-8421.78	3163.42	1764757.85	14631636.78	40°17'13.9866"N	80°33'14.8758"W	8996.31	159.413	0.18	
15238.00	89.480	164.710	5597.81	9092.84	-8515.36	3188.93	1764783.35	14631543.23	40°17'13.0605"N	80°33'14.5527"W	9092.89	159.470	0.09	
15335.00	89.480	164.750	5598.69	9189.46	-8608.93	3214.47	1764808.89	14631449.69	40°17'12.1346"N	80°33'14.2292"W	9189.48	159.525	0.04	
15431.00	89.450	164.920	5599.59	9285.06	-8701.59	3239.59	1764833.99	14631357.08	40°17'11.2178"N	80°33'13.9112"W	9285.07	159.580	0.18	
15528.00	89.780	164.260	5600.24	9381.70	-8795.10	3265.36	1764859.75	14631263.60	40°17'10.2925"N	80°33'13.5847"W	9381.70	159.632	0.76	
15624.00	88.090	164.330	5602.02	9477.37	-8887.49	3291.34	1764885.72	14631171.24	40°17'9.3782"N	80°33'13.2554"W	9477.37	159.679	1.76	
15721.00	89.570	163.030	5604.00	9574.10	-8980.56	3318.59	1764912.96	14631078.21	40°17'8.4571"N	80°33'12.9099"W	9574.11	159.719	2.03	
15817.00	89.110	162.300	5605.11	9669.96	-9072.19	3347.19	1764941.55	14630986.61	40°17'7.5502"N	80°33'12.5468"W	9669.97	159.748	0.90	
15914.00	89.780	161.520	5606.05	9766.88	-9164.39	3377.31	1764971.66	14630894.45	40°17'6.6376"N	80°33'12.1641"W	9766.90	159.770	1.06	
16011.00	89.420	161.830	5606.73	9863.82	-9256.47	3407.81	1765002.15	14630802.40	40°17'5.7262"N	80°33'11.7766"W	9863.84	159.789	0.49	
16107.00	89.170	161.920	5607.91	9959.74	-9347.70	3437.67	1765032.00	14630711.21	40°17'4.8232"N	80°33'11.3972"W	9959.77	159.809	0.28	
16204.00	89.200	161.800	5609.29	10056.66	-9439.87	3467.87	1765062.18	14630619.08	40°17'3.9109"N	80°33'11.0136"W	10056.70	159.828	0.13	
16300.00	89.140	161.930	5610.68	10152.58	-9531.09	3497.74	1765092.05	14630527.89	40°17'3.0080"N	80°33'10.6340"W	10152.63	159.848	0.15	
16397.00	89.320	162.060	5611.98	10249.49	-9623.33	3527.72	1765122.02	14630435.68	40°17'2.0950"N	80°33'10.2532"W	10249.56	159.868	0.23	
16494.00	89.350	161.060	5613.11	10346.43	-9715.35	3558.40	1765152.68	14630343.71	40°17'1.1843"N	80°33'9.8633"W	10346.51	159.884	1.03	
16591.00	89.200	161.400	5614.34	10443.38	-9807.18	3589.61	1765183.88	14630251.91	40°17'0.2752"N	80°33'9.4666"W	10443.47	159.896	0.38	
16688.00	89.450	161.770	5615.48	10540.32	-9899.21	3620.25	1765214.51	14630159.92	40°16'59.3643"N	80°33'9.0773"W	10540.42	159.912	0.46	
16785.00	88.800	161.500	5616.96	10637.25	-9991.25	3650.81	1765245.05	14630067.90	40°16'58.4532"N	80°33'8.6890"W	10637.37	159.928	0.73	
16881.00	88.860	162.660	5618.92	10733.14	-10082.58	3680.34	1765274.58	14629976.62	40°16'57.5493"N	80°33'8.3139"W	10733.28	159.947	1.21	
16977.00	89.820	161.510	5620.03	10829.05	-10173.91	3709.87	1765304.09	14629885.32	40°16'56.6453"N	80°33'7.9389"W	10829.20	159.966	1.56	



Actual Wellpath Report

Nick Ballato BRK 10H awp Proj: 30189'
Page 8 of 14

RECEIVED
 Office of Oil and Gas
 DEC 01 2023
 WV Department of
 Environmental Protection



REFERENCE WELLPATH IDENTIFICATION			
Operator	SWN PRODUCTION COMPANY, LLC	Well	Nick Ballato BRK 10H
Field	Brooke	API	47009003350000
Facility	Nick Ballato BRK Pad	Wellbore	Nick Ballato BRK 10H AWB
Slot	10H		

WELLPATH DATA (316 stations)														
MD [ft]	Inclination [°]	Azimuth [°]	TVD [ft]	Vert Sect [ft]	North [ft]	East [ft]	Grid East [US ft]	Grid North [US ft]	Latitude	Longitude	Closure Dist [ft]	Closure Dir [°]	DLS [°/100ft]	Comments
17074.00	88.520	161.430	5621.43	10925.99	-10265.87	3740.69	1765334.90	14629793.39	40°16'55.7350"N	80°33'7.5472"W	10926.16	159.979	1.34	
17171.00	88.640	161.300	5623.83	11022.92	-10357.76	3771.68	1765365.88	14629701.54	40°16'54.8255"N	80°33'7.1533"W	11023.10	159.991	0.18	
17268.00	89.230	161.490	5625.64	11119.85	-10449.67	3802.62	1765396.81	14629609.66	40°16'53.9157"N	80°33'6.7601"W	11120.05	160.004	0.64	
17364.00	89.380	161.290	5626.80	11215.80	-10540.65	3833.25	1765427.43	14629518.72	40°16'53.0152"N	80°33'6.3708"W	11216.02	160.015	0.26	
17460.00	88.680	161.290	5628.43	11311.75	-10631.56	3864.04	1765458.21	14629427.84	40°16'52.1152"N	80°33'5.9795"W	11311.98	160.026	0.73	
17557.00	90.370	160.750	5629.23	11408.72	-10723.28	3895.59	1765489.74	14629336.16	40°16'51.2073"N	80°33'5.5784"W	11408.96	160.035	1.83	
17654.00	88.800	161.360	5629.93	11505.68	-10815.02	3927.08	1765521.22	14629244.46	40°16'50.2992"N	80°33'5.1781"W	11505.94	160.043	1.74	
17750.00	88.950	161.420	5631.82	11601.62	-10905.98	3957.71	1765551.84	14629153.53	40°16'49.3988"N	80°33'4.7889"W	11601.89	160.054	0.17	
17846.00	88.980	161.260	5633.55	11697.56	-10996.92	3988.42	1765582.53	14629062.62	40°16'48.4986"N	80°33'4.3986"W	11697.85	160.065	0.17	
17943.00	88.980	161.280	5635.28	11794.51	-11088.77	4019.56	1765613.66	14628970.81	40°16'47.5895"N	80°33'4.0028"W	11794.82	160.075	0.02	
18039.00	89.290	161.690	5636.73	11890.45	-11179.79	4050.04	1765644.13	14628879.83	40°16'46.6885"N	80°33'3.6154"W	11890.78	160.086	0.54	
18136.00	89.110	160.800	5638.08	11987.40	-11271.63	4081.23	1765675.31	14628788.02	40°16'45.7794"N	80°33'3.2191"W	11987.75	160.096	0.94	
18232.00	89.420	161.710	5639.31	12083.35	-11362.53	4112.08	1765706.14	14628697.16	40°16'44.8796"N	80°33'2.8270"W	12083.72	160.105	1.00	
18329.00	89.600	161.040	5640.14	12180.31	-11454.45	4143.05	1765737.11	14628605.28	40°16'43.9698"N	80°33'2.4334"W	12180.69	160.115	0.72	
18425.00	88.920	161.130	5641.38	12276.27	-11545.25	4174.17	1765768.21	14628514.50	40°16'43.0709"N	80°33'2.0378"W	12276.67	160.123	0.71	
18522.00	89.290	160.850	5642.90	12373.23	-11636.95	4205.76	1765799.79	14628422.84	40°16'42.1632"N	80°33'1.6362"W	12373.65	160.129	0.48	
18619.00	89.050	161.370	5644.30	12470.19	-11728.72	4237.16	1765831.18	14628331.11	40°16'41.2548"N	80°33'1.2371"W	12470.62	160.137	0.59	
18715.00	89.260	161.400	5645.72	12566.13	-11819.69	4267.80	1765861.81	14628240.18	40°16'40.3543"N	80°33'0.8477"W	12566.59	160.147	0.22	
18812.00	89.480	158.990	5646.79	12663.12	-11910.94	4300.67	1765894.66	14628148.96	40°16'39.4510"N	80°33'0.4297"W	12663.57	160.147	2.49	
18909.00	89.690	157.000	5647.49	12760.07	-12000.86	4337.01	1765930.99	14628059.07	40°16'38.5605"N	80°32'59.9668"W	12760.50	160.131	2.06	
19006.00	89.660	157.140	5648.04	12856.97	-12090.20	4374.80	1765968.76	14627969.77	40°16'37.6758"N	80°32'59.4850"W	12857.36	160.108	0.15	
19102.00	89.820	155.030	5648.48	12952.77	-12177.95	4413.71	1766007.66	14627882.05	40°16'36.8068"N	80°32'58.9887"W	12953.12	160.078	2.20	
19199.00	89.720	155.470	5648.86	13049.49	-12266.04	4454.32	1766048.26	14627794.00	40°16'35.9342"N	80°32'58.4706"W	13049.78	160.042	0.47	
19295.00	89.600	154.030	5649.43	13145.13	-12352.86	4495.27	1766089.19	14627707.21	40°16'35.0742"N	80°32'57.9480"W	13145.37	160.003	1.51	
19391.00	89.880	150.450	5649.87	13240.31	-12437.80	4539.98	1766133.88	14627622.30	40°16'34.2327"N	80°32'57.3767"W	13240.48	159.947	3.74	
19488.00	90.370	150.100	5649.66	13336.01	-12522.03	4588.07	1766181.96	14627538.10	40°16'33.3978"N	80°32'56.7618"W	13336.11	159.877	0.62	
19585.00	90.030	148.640	5649.32	13431.45	-12605.50	4637.49	1766231.36	14627454.67	40°16'32.5706"N	80°32'56.1297"W	13431.49	159.802	1.55	
19682.00	89.820	147.210	5649.45	13526.42	-12687.69	4689.00	1766282.84	14627372.51	40°16'31.7558"N	80°32'55.4705"W	13526.42	159.717	1.49	
19778.00	90.000	146.200	5649.60	13619.97	-12767.93	4741.70	1766335.52	14627292.30	40°16'30.9603"N	80°32'54.7959"W	13619.97	159.626	1.07	
19875.00	89.850	145.090	5649.72	13714.08	-12848.01	4796.44	1766390.24	14627212.25	40°16'30.1662"N	80°32'54.0950"W	13714.12	159.528	1.15	

REFERENCE WELLPATH IDENTIFICATION				
Operator	SWN PRODUCTION COMPANY, LLC		Well	Nick Ballato BRK 10H
Field	Brooke		API	47009003350000
Facility	Nick Ballato BRK Pad		Wellbore	Nick Ballato BRK 10H AWB
Slot	10H			

WELLPATH DATA (316 stations)														
MD [ft]	Inclination [°]	Azimuth [°]	TVD [ft]	Vert Sect [ft]	North [ft]	East [ft]	Grid East [US ft]	Grid North [US ft]	Latitude	Longitude	Closure Dist [ft]	Closure Dir [°]	DLS ["/100ft]	Comments
19971.00	89.750	145.620	5650.06	13807.11	-12926.98	4851.01	1766444.79	14627133.31	40°16'29.3830"N	80°32'53.3961"W	13807.22	159.431	0.56	
20067.00	89.510	145.190	5650.68	13900.15	-13006.01	4905.52	1766499.28	14627054.31	40°16'28.5994"N	80°32'52.6981"W	13900.37	159.335	0.51	
20164.00	89.720	145.310	5651.33	13994.09	-13085.71	4960.80	1766554.54	14626974.65	40°16'27.8090"N	80°32'51.9901"W	13994.47	159.238	0.25	
20261.00	89.290	145.380	5652.17	14088.08	-13165.49	5015.96	1766609.68	14626894.89	40°16'27.0178"N	80°32'51.2837"W	14088.65	159.144	0.45	
20357.00	89.480	145.230	5653.20	14181.08	-13244.42	5070.60	1766664.30	14626815.99	40°16'26.2351"N	80°32'50.5840"W	14181.88	159.051	0.25	
20454.00	89.600	145.220	5653.98	14275.01	-13324.09	5125.92	1766719.60	14626736.35	40°16'25.4450"N	80°32'49.8755"W	14276.08	158.958	0.12	
20550.00	89.820	145.620	5654.46	14368.06	-13403.13	5180.41	1766774.06	14626657.34	40°16'24.6612"N	80°32'49.1778"W	14369.43	158.868	0.48	
20647.00	89.380	145.170	5655.14	14462.07	-13482.97	5235.49	1766829.13	14626577.54	40°16'23.8695"N	80°32'48.4724"W	14463.78	158.779	0.65	
20743.00	89.600	145.080	5656.00	14554.99	-13561.72	5290.38	1766884.00	14626498.81	40°16'23.0885"N	80°32'47.7695"W	14557.08	158.689	0.25	
20840.00	89.630	145.470	5656.65	14648.95	-13641.45	5345.64	1766939.23	14626419.12	40°16'22.2979"N	80°32'47.0619"W	14651.45	158.601	0.40	
20936.00	89.260	145.120	5657.58	14741.94	-13720.36	5400.29	1766993.86	14626340.23	40°16'21.5153"N	80°32'46.3621"W	14744.88	158.516	0.53	
21033.00	89.320	143.800	5658.78	14835.54	-13799.28	5456.67	1767050.22	14626261.34	40°16'20.7326"N	80°32'45.6399"W	14838.99	158.425	1.36	
21129.00	89.510	144.040	5659.76	14927.93	-13876.87	5513.20	1767106.73	14626183.79	40°16'19.9631"N	80°32'44.9158"W	14931.94	158.332	0.32	
21226.00	89.320	143.630	5660.75	15021.25	-13955.17	5570.44	1767163.94	14626105.51	40°16'19.1864"N	80°32'44.1825"W	15025.87	158.240	0.47	
21323.00	89.570	144.240	5661.69	15114.62	-14033.58	5627.54	1767221.02	14626027.14	40°16'18.4087"N	80°32'43.4511"W	15119.87	158.149	0.68	
21419.00	89.600	144.340	5662.39	15207.18	-14111.53	5683.57	1767277.03	14625949.22	40°16'17.6356"N	80°32'42.7334"W	15213.09	158.062	0.11	
21515.00	89.880	144.600	5662.82	15299.82	-14189.65	5739.36	1767332.80	14625871.12	40°16'16.8608"N	80°32'42.0188"W	15306.42	157.978	0.40	
21612.00	89.820	144.490	5663.07	15393.47	-14268.67	5795.63	1767389.04	14625792.14	40°16'16.0771"N	80°32'41.2982"W	15400.78	157.894	0.13	
21708.00	89.510	144.040	5663.64	15486.02	-14346.59	5851.69	1767445.09	14625714.25	40°16'15.3043"N	80°32'40.5801"W	15494.09	157.810	0.57	
21805.00	89.510	144.040	5664.47	15579.44	-14425.10	5908.65	1767502.03	14625635.77	40°16'14.5255"N	80°32'39.8505"W	15588.32	157.726	0.00	
21901.00	89.420	144.000	5665.36	15671.88	-14502.78	5965.05	1767558.40	14625558.11	40°16'13.7551"N	80°32'39.1281"W	15681.60	157.642	0.10	
21998.00	89.510	146.220	5666.27	15765.76	-14582.34	6020.53	1767613.86	14625478.59	40°16'12.9661"N	80°32'38.4177"W	15776.29	157.566	2.29	
22094.00	89.510	148.390	5667.09	15859.52	-14663.12	6072.38	1767665.69	14625397.84	40°16'12.1652"N	80°32'37.7541"W	15870.76	157.504	2.26	
22191.00	89.510	148.400	5667.92	15954.65	-14745.73	6123.21	1767716.50	14625315.26	40°16'11.3463"N	80°32'37.1039"W	15966.54	157.449	0.01	
22288.00	89.260	150.330	5668.96	16050.08	-14829.18	6172.63	1767765.91	14625231.84	40°16'10.5191"N	80°32'36.4718"W	16062.57	157.401	2.01	
22384.00	89.290	150.430	5670.17	16144.82	-14912.63	6220.08	1767813.33	14625148.42	40°16'9.6921"N	80°32'35.8653"W	16157.85	157.359	0.11	
22481.00	89.420	152.120	5671.27	16240.77	-14997.69	6266.69	1767859.93	14625063.40	40°16'8.8492"N	80°32'35.2697"W	16254.29	157.323	1.75	
22578.00	89.480	154.720	5672.20	16337.18	-15084.42	6310.09	1767903.31	14624976.70	40°16'7.9899"N	80°32'34.7156"W	16351.06	157.300	2.68	
22674.00	89.450	152.310	5673.09	16432.62	-15170.34	6352.90	1767946.10	14624890.82	40°16'7.1387"N	80°32'34.1691"W	16446.84	157.277	2.51	
22771.00	89.690	152.240	5673.82	16528.81	-15256.20	6398.02	1767991.21	14624804.99	40°16'6.2880"N	80°32'33.5927"W	16543.47	157.248	0.26	

RECEIVED
Office of Oil and Gas
DEC 01 2023
WV Department of
Environmental Protection

REFERENCE WELLPATH IDENTIFICATION				
Operator	SWN PRODUCTION COMPANY, LLC		Well	Nick Ballato BRK 10H
Field	Brooke		API	47009003350000
Facility	Nick Ballato BRK Pad		Wellbore	Nick Ballato BRK 10H AWB
Slot	10H			

WELLPATH DATA (316 stations)														
MD [ft]	Inclination [°]	Azimuth [°]	TVD [ft]	Vert Sect [ft]	North [ft]	East [ft]	Grid East [US ft]	Grid North [US ft]	Latitude	Longitude	Closure Dist [ft]	Closure Dir [°]	DLS ["/100ft]	Comments
22868.00	89.720	152.360	5674.32	16625.01	-15342.08	6443.11	1768036.28	14624719.14	40°16'5.4370"N	80°32'33.0167"W	16640.11	157.219	0.13	
22964.00	89.480	155.030	5674.99	16720.48	-15428.13	6485.65	1768078.80	14624633.12	40°16'4.5845"N	80°32'32.4737"W	16735.91	157.199	2.79	
23061.00	89.570	156.630	5675.80	16817.26	-15516.62	6525.36	1768118.50	14624544.67	40°16'3.7081"N	80°32'31.9673"W	16832.88	157.191	1.65	
23158.00	89.750	158.620	5676.37	16914.19	-15606.31	6562.28	1768155.41	14624455.01	40°16'2.8199"N	80°32'31.4970"W	16929.87	157.194	2.06	
23254.00	89.600	158.550	5676.92	17010.17	-15695.68	6597.33	1768190.44	14624365.67	40°16'1.9350"N	80°32'31.0508"W	17025.84	157.202	0.17	
23351.00	89.690	158.570	5677.52	17107.15	-15785.97	6632.79	1768225.89	14624275.42	40°16'1.0410"N	80°32'30.5995"W	17122.81	157.209	0.10	
23447.00	89.720	158.750	5678.01	17203.14	-15875.38	6667.72	1768260.81	14624186.04	40°16'0.1556"N	80°32'30.1548"W	17218.78	157.217	0.19	
23543.00	89.480	158.800	5678.68	17299.12	-15964.87	6702.48	1768295.55	14624096.59	40°15'59.2695"N	80°32'29.7124"W	17314.74	157.226	0.26	
23640.00	89.540	159.470	5679.51	17396.11	-16055.51	6737.03	1768330.08	14624005.99	40°15'58.3721"N	80°32'29.2728"W	17411.68	157.237	0.69	
23737.00	89.540	160.480	5680.29	17493.11	-16146.64	6770.24	1768363.28	14623914.89	40°15'57.4699"N	80°32'28.8505"W	17508.57	157.252	1.04	
23831.00	89.570	160.430	5681.02	17587.10	-16235.22	6801.69	1768394.72	14623826.35	40°15'56.5930"N	80°32'28.4507"W	17602.42	157.269	0.06	
23928.00	89.570	160.360	5681.75	17684.09	-16326.59	6834.23	1768427.25	14623735.01	40°15'55.6884"N	80°32'28.0370"W	17699.28	157.286	0.07	
24024.00	89.570	160.620	5682.47	17780.07	-16417.08	6866.29	1768459.30	14623644.56	40°15'54.7926"N	80°32'27.6295"W	17795.12	157.303	0.27	
24121.00	89.510	160.590	5683.25	17877.06	-16508.57	6898.50	1768491.50	14623553.10	40°15'53.8868"N	80°32'27.2201"W	17891.96	157.321	0.07	
24217.00	89.570	160.590	5684.02	17973.04	-16599.11	6930.40	1768523.39	14623462.59	40°15'52.9905"N	80°32'26.8146"W	17987.80	157.339	0.06	
24313.00	89.690	160.620	5684.64	18069.03	-16689.66	6962.28	1768555.25	14623372.08	40°15'52.0941"N	80°32'26.4095"W	18083.64	157.356	0.13	
24410.00	89.420	160.110	5685.39	18166.01	-16781.02	6994.88	1768587.83	14623280.76	40°15'51.1896"N	80°32'25.9951"W	18180.51	157.372	0.59	
24506.00	89.630	160.280	5686.19	18262.01	-16871.34	7027.40	1768620.35	14623190.47	40°15'50.2955"N	80°32'25.5816"W	18276.39	157.387	0.28	
24603.00	89.600	160.330	5686.84	18359.00	-16962.66	7060.09	1768653.02	14623099.18	40°15'49.3914"N	80°32'25.1661"W	18373.26	157.402	0.06	
24700.00	89.600	160.090	5687.52	18455.99	-17053.93	7092.93	1768685.85	14623007.95	40°15'48.4878"N	80°32'24.7485"W	18470.14	157.417	0.25	
24796.00	89.690	160.560	5688.11	18551.98	-17144.32	7125.25	1768718.16	14622917.59	40°15'47.5929"N	80°32'24.3377"W	18566.02	157.432	0.50	
24892.00	89.570	160.410	5688.73	18647.97	-17234.81	7157.32	1768750.22	14622827.14	40°15'46.6971"N	80°32'23.9301"W	18661.88	157.448	0.20	
24989.00	89.290	160.390	5689.70	18744.96	-17326.18	7189.86	1768782.74	14622735.80	40°15'45.7925"N	80°32'23.5165"W	18758.75	157.463	0.29	
25086.00	89.480	160.330	5690.74	18841.95	-17417.53	7222.46	1768815.33	14622644.49	40°15'44.8881"N	80°32'23.1021"W	18855.62	157.478	0.21	
25182.00	88.860	160.190	5692.13	18937.93	-17507.88	7254.88	1768847.74	14622554.17	40°15'43.9937"N	80°32'22.6900"W	18951.50	157.492	0.66	
25278.00	88.610	160.900	5694.25	19033.89	-17598.38	7286.85	1768879.69	14622463.71	40°15'43.0978"N	80°32'22.2837"W	19047.34	157.507	0.78	
25375.00	88.460	160.420	5696.73	19130.85	-17689.87	7318.96	1768911.79	14622372.25	40°15'42.1920"N	80°32'21.8756"W	19144.16	157.523	0.52	
25471.00	89.320	160.610	5698.59	19226.82	-17780.36	7350.98	1768943.79	14622281.80	40°15'41.2962"N	80°32'21.4687"W	19240.01	157.538	0.92	
25568.00	89.080	160.470	5699.94	19323.80	-17871.81	7383.29	1768976.09	14622190.39	40°15'40.3909"N	80°32'21.0580"W	19336.87	157.553	0.29	
25664.00	89.290	159.850	5701.31	19419.78	-17962.10	7415.87	1769008.66	14622100.13	40°15'39.4969"N	80°32'20.6439"W	19432.76	157.566	0.68	

RECEIVED
Office of Oil and Gas
DEC 01 2023
Department of
Environmental Protection

REFERENCE WELLPATH IDENTIFICATION				
Operator	SWN PRODUCTION COMPANY, LLC		Well	Nick Ballato BRK 10H
Field	Brooke		API	47009003350000
Facility	Nick Ballato BRK Pad		Wellbore	Nick Ballato BRK 10H AWB
Slot	10H			

WELLPATH DATA (316 stations)														
MD [ft]	Inclination [°]	Azimuth [°]	TVD [ft]	Vert Sect [ft]	North [ft]	East [ft]	Grid East [US ft]	Grid North [US ft]	Latitude	Longitude	Closure Dist [ft]	Closure Dir [°]	DLS [°/100ft]	Comments
25761.00	88.920	160.640	5702.82	19516.76	-18053.38	7448.65	1769041.43	14622008.89	40°15'38.5933"N	80°32'20.2272"W	19529.64	157.579	0.90	
25858.00	88.830	160.450	5704.73	19613.73	-18144.82	7480.95	1769073.72	14621917.48	40°15'37.6880"N	80°32'19.8167"W	19626.49	157.594	0.22	
25954.00	88.860	160.770	5706.66	19709.70	-18235.36	7512.81	1769105.57	14621826.98	40°15'36.7917"N	80°32'19.4117"W	19722.34	157.609	0.33	
26051.00	88.710	160.170	5708.72	19806.67	-18326.76	7545.23	1769137.98	14621735.61	40°15'35.8868"N	80°32'18.9997"W	19819.20	157.623	0.64	
26147.00	88.710	160.620	5710.88	19902.64	-18417.17	7577.44	1769170.17	14621645.24	40°15'34.9918"N	80°32'18.5904"W	19915.06	157.636	0.47	
26244.00	88.830	160.300	5712.96	19999.61	-18508.56	7609.87	1769202.59	14621553.88	40°15'34.0870"N	80°32'18.1782"W	20011.92	157.650	0.35	
26341.00	88.860	160.390	5714.92	20096.58	-18599.89	7642.49	1769235.20	14621462.58	40°15'33.1828"N	80°32'17.7636"W	20108.79	157.663	0.10	
26437.00	88.980	160.500	5716.73	20192.55	-18690.34	7674.62	1769267.31	14621372.17	40°15'32.2874"N	80°32'17.3552"W	20204.66	157.676	0.17	
26534.00	88.610	160.310	5718.77	20289.52	-18781.70	7707.14	1769299.82	14621280.85	40°15'31.3829"N	80°32'16.9419"W	20301.53	157.689	0.43	
26630.00	89.010	160.460	5720.76	20385.49	-18872.11	7739.36	1769332.03	14621190.47	40°15'30.4878"N	80°32'16.5324"W	20397.41	157.702	0.44	
26727.00	88.860	160.300	5722.56	20482.47	-18963.46	7771.93	1769364.58	14621099.15	40°15'29.5834"N	80°32'16.1185"W	20494.28	157.714	0.23	
26823.00	88.800	160.300	5724.52	20578.44	-19053.82	7804.28	1769396.93	14621008.83	40°15'28.6888"N	80°32'15.7073"W	20590.17	157.726	0.06	
26919.00	88.680	160.520	5726.63	20674.41	-19144.24	7836.46	1769429.09	14620918.44	40°15'27.7937"N	80°32'15.2983"W	20686.04	157.739	0.26	
27016.00	88.890	160.450	5728.69	20771.38	-19235.65	7868.86	1769461.48	14620827.07	40°15'26.8887"N	80°32'14.8866"W	20782.91	157.752	0.23	
27112.00	88.800	160.620	5730.63	20867.35	-19326.15	7900.84	1769493.45	14620736.61	40°15'25.9928"N	80°32'14.4802"W	20878.77	157.764	0.20	
27209.00	88.680	160.330	5732.76	20964.32	-19417.55	7933.25	1769525.85	14620645.24	40°15'25.0880"N	80°32'14.0683"W	20975.64	157.777	0.32	
27305.00	88.650	159.950	5735.00	21060.29	-19507.81	7965.86	1769558.44	14620555.01	40°15'24.1943"N	80°32'13.6538"W	21071.54	157.788	0.40	
27402.00	88.610	160.420	5737.31	21157.25	-19599.04	7998.73	1769591.30	14620463.82	40°15'23.2911"N	80°32'13.2360"W	21168.42	157.799	0.49	
27499.00	89.230	160.720	5739.14	21254.22	-19690.50	8030.99	1769623.55	14620372.39	40°15'22.3857"N	80°32'12.8260"W	21265.29	157.811	0.71	
27595.00	89.820	160.650	5739.94	21350.21	-19781.09	8062.74	1769655.29	14620281.84	40°15'21.4888"N	80°32'12.4226"W	21361.17	157.824	0.62	
27692.00	89.540	160.960	5740.48	21447.18	-19872.70	8094.63	1769687.17	14620190.27	40°15'20.5820"N	80°32'12.0175"W	21458.04	157.838	0.43	
27789.00	89.480	160.340	5741.31	21544.17	-19964.22	8126.77	1769719.29	14620098.78	40°15'19.6759"N	80°32'11.6091"W	21554.92	157.850	0.64	
27885.00	89.380	160.810	5742.27	21640.15	-20054.75	8158.70	1769751.21	14620008.29	40°15'18.7797"N	80°32'11.2035"W	21650.80	157.862	0.50	
27982.00	89.320	160.390	5743.37	21737.13	-20146.23	8190.92	1769783.41	14619916.84	40°15'17.8740"N	80°32'10.7941"W	21747.69	157.875	0.44	
28078.00	89.380	160.050	5744.45	21833.12	-20236.56	8223.40	1769815.88	14619826.54	40°15'16.9797"N	80°32'10.3812"W	21843.60	157.885	0.36	
28175.00	89.350	160.060	5745.53	21930.11	-20327.74	8256.49	1769848.96	14619735.40	40°15'16.0770"N	80°32'9.9607"W	21940.52	157.895	0.03	
28272.00	89.320	160.420	5746.66	22027.10	-20419.02	8289.28	1769881.74	14619644.15	40°15'15.1733"N	80°32'9.5439"W	22037.44	157.905	0.37	
28368.00	89.380	160.680	5747.74	22123.08	-20509.54	8321.24	1769913.69	14619553.67	40°15'14.2772"N	80°32'9.1377"W	22133.33	157.916	0.28	
28465.00	89.320	160.470	5748.85	22220.06	-20601.01	8353.50	1769945.93	14619462.24	40°15'13.3716"N	80°32'8.7279"W	22230.22	157.928	0.23	
28561.00	89.410	160.420	5749.91	22316.05	-20691.47	8385.63	1769978.05	14619371.81	40°15'12.4761"N	80°32'8.3196"W	22326.12	157.939	0.11	



Actual Wellpath Report

Nick Ballato BRK 10H awp Proj: 30189'
Page 12 of 14

RECEIVED
 Office of Oil and Gas
 DEC 01 2023
 WV Department of
 Environmental Protection



REFERENCE WELLPATH IDENTIFICATION			
Operator	SWN PRODUCTION COMPANY, LLC	Well	Nick Ballato BRK 10H
Field	Brooke	API	47009003350000
Facility	Nick Ballato BRK Pad	Wellbore	Nick Ballato BRK 10H AWB
Slot	10H		

WELLPATH DATA (316 stations) † = interpolated, ‡ = extrapolated station														
MD [ft]	Inclination [°]	Azimuth [°]	TVD [ft]	Vert Sect [ft]	North [ft]	East [ft]	Grid East [US ft]	Grid North [US ft]	Latitude	Longitude	Closure Dist [ft]	Closure Dir [°]	DLS [°/100ft]	Comments
28658.00	89.380	160.390	5750.93	22413.03	-20782.84	8418.16	1770010.57	14619280.47	40°15'11.5714"N	80°32'7.9062"W	22423.03	157.949	0.04	
28754.00	89.540	160.260	5751.84	22509.02	-20873.24	8450.48	1770042.88	14619190.11	40°15'10.6765"N	80°32'7.4955"W	22518.94	157.960	0.21	
28851.00	89.540	160.700	5752.62	22606.01	-20964.66	8482.89	1770075.27	14619098.73	40°15'9.7714"N	80°32'7.0837"W	22615.84	157.970	0.45	
28947.00	89.630	160.610	5753.31	22701.99	-21055.24	8514.69	1770107.06	14619008.19	40°15'8.8747"N	80°32'6.6797"W	22711.73	157.982	0.13	
29044.00	90.180	160.600	5753.47	22798.98	-21146.73	8546.90	1770139.26	14618916.73	40°15'7.9689"N	80°32'6.2704"W	22808.63	157.993	0.57	
29140.00	89.570	160.500	5753.68	22894.97	-21237.25	8578.87	1770171.21	14618826.24	40°15'7.0728"N	80°32'5.8643"W	22904.54	158.004	0.64	
29237.00	89.570	160.730	5754.41	22991.95	-21328.75	8611.06	1770203.40	14618734.78	40°15'6.1669"N	80°32'5.4553"W	23001.43	158.015	0.24	
29333.00	89.380	160.390	5755.29	23087.93	-21419.27	8643.01	1770235.33	14618644.29	40°15'5.2708"N	80°32'5.0493"W	23097.34	158.025	0.41	
29429.00	89.480	160.600	5756.24	23183.92	-21509.76	8675.06	1770267.37	14618553.84	40°15'4.3749"N	80°32'4.6421"W	23193.24	158.035	0.24	
29526.00	89.170	160.540	5757.39	23280.90	-21601.23	8707.33	1770299.62	14618462.40	40°15'3.4694"N	80°32'4.2322"W	23290.14	158.046	0.33	
29622.00	89.320	160.780	5758.65	23376.88	-21691.80	8739.12	1770331.40	14618371.86	40°15'2.5727"N	80°32'3.8283"W	23386.03	158.057	0.29	
29815.00	89.290	160.700	5760.99	23569.83	-21873.99	8802.78	1770395.04	14618189.75	40°15'0.7691"N	80°32'3.0197"W	23578.81	158.079	0.04	
30008.00	89.260	160.340	5763.44	23762.79	-22055.93	8867.13	1770459.37	14618007.88	40°14'58.9679"N	80°32'2.2021"W	23771.62	158.098	0.19	
30104.00	89.380	160.750	5764.58	23858.77	-22146.44	8899.10	1770491.33	14617917.40	40°14'58.0718"N	80°32'1.7959"W	23867.52	158.108	0.44	
30164.00	88.980	160.370	5765.43	23918.76	-22203.01	8919.07	1770511.29	14617860.85	40°14'57.5117"N	80°32'1.5422"W	23927.46	158.114	0.92	
30189.00‡	88.980	160.370	5765.88	23943.75	-22226.55	8927.47	1770519.68	14617837.32	40°14'57.2787"N	80°32'1.4355"W	23952.44	158.117	0.00	

HOLE & CASING SECTIONS - Ref Wellbore: Nick Ballato BRK 10H AWB Ref Wellpath: Nick Ballato BRK 10H awp Proj: 30189'									
String/Diameter	Start MD [ft]	End MD [ft]	Interval [ft]	Start TVD [ft]	End TVD [ft]	Start N/S [ft]	Start E/W [ft]	End N/S [ft]	End E/W [ft]
13.375in Casing	26.00	373.00	347.00	26.00	372.99	0.00	0.00	-0.49	2.78
9.625in Casing	26.00	1392.00	1366.00	26.00	1390.06	0.00	0.00	18.71	-36.69



Actual Wellpath Report

Nick Ballato BRK 10H awp Proj: 30189'
Page 13 of 14

RECEIVED
Office of Oil and Gas

DEC 01 2023

WV Department of
Environmental Protection



REFERENCE WELLPATH IDENTIFICATION			
Operator	SWN PRODUCTION COMPANY, LLC	Well	Nick Ballato BRK 10H
Field	Brooke	API	47009003350000
Facility	Nick Ballato BRK Pad	Wellbore	Nick Ballato BRK 10H AWB
Slot	10H		

TARGETS								
Name	TVD [ft]	North [ft]	East [ft]	Grid East [US ft]	Grid North [US ft]	Latitude	Longitude	Shape
Nick Ballato BRK 10H LP Rev-3	5530.00	308.35	596.72	1762192.14	14640363.54	40°18'40.3813"N	80°33'47.4403"W	point
Nick Ballato BRK 10H 1684	5560.00	-1351.32	1178.45	1762773.65	14638704.51	40°18'23.9526"N	80°33'40.0372"W	point
Nick Ballato BRK 10H 6109	5598.00	-5631.00	2364.18	1763958.92	14634426.48	40°17'41.6038"N	80°33'25.0089"W	point
Nick Ballato BRK 10H 9501	5631.00	-8903.11	3296.91	1764891.29	14631155.63	40°17'9.2236"N	80°33'13.1846"W	point
Nick Ballato BRK 10H 12592	5672.00	-11837.60	4274.18	1765868.18	14628222.27	40°16'40.1770"N	80°33'0.7667"W	point
Nick Ballato BRK 10H 19058	5706.00	-17617.87	7284.56	1768877.40	14622444.23	40°15'42.9053"N	80°32'22.3146"W	point
Nick Ballato BRK 10H BHL Rev-5	5784.00	-22226.45	8928.87	1770521.08	14617837.43	40°14'57.2797"N	80°32'1.4174"W	point
Nick Ballato BRK 10H Hardline 2	5998.30	-1334.13	549.02	1762144.46	14638721.69	40°18'24.1531"N	80°33'48.1605"W	polygon
2D Polygon: dimensions not calculated								



Actual Wellpath Report

Nick Ballato BRK 10H awp Proj: 30189'
Page 14 of 14

RECEIVED
 Office of Oil and Gas
 DEC 01 2023
 WV Department of
 Environmental Protection



REFERENCE WELLPATH IDENTIFICATION			
Operator	SWN PRODUCTION COMPANY, LLC	Well	Nick Ballato BRK 10H
Field	Brooke	API	47009003350000
Facility	Nick Ballato BRK Pad	Wellbore	Nick Ballato BRK 10H AWB
Slot	10H		

WELLPATH COMPOSITION - Ref Wellbore: Nick Ballato BRK 10H AWB Ref Wellpath: Nick Ballato BRK 10H awp Proj: 30189'					
Start MD [ft]	End MD [ft]	Positional Uncertainty Model	Log Name/Comment	Wellbore	Survey Date
26.00	314.00	OWSG MWD rev2 + IFR1 + Multi-Station Correction	1 Tally MWD IFR-MSA 17.50" 149' - 314'	Nick Ballato BRK 10H AWB	6/12/2023
314.00	1324.00	OWSG MWD rev2 + IFR1 + Multi-Station Correction	2 Tally MWD IFR-MSA 12.25" 417' - 1324'	Nick Ballato BRK 10H AWB	6/12/2023
1324.00	4707.00	OWSG MWD rev2 + IFR1 + Multi-Station Correction	3 Tally MWD IFR-MSA 8.75" 1427' - 4707'	Nick Ballato BRK 10H AWB	6/12/2023
4707.00	30189.00	OWSG MWD rev2 + IFR1 + Multi-Station Correction	4 BH ATC MWD IFR-MSA 8.5" 4817' - 30164'	Nick Ballato BRK 10H AWB	6/12/2023