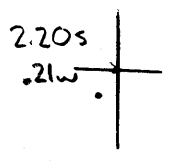


40°15'00"

Latitude

03, E. 08
803730

Longitude



Topo Location

7.5' Loc. _____ 15' Loc. _____
 _____ (calc.) _____

Company _____

Farm Wheeling Steel Corp #4

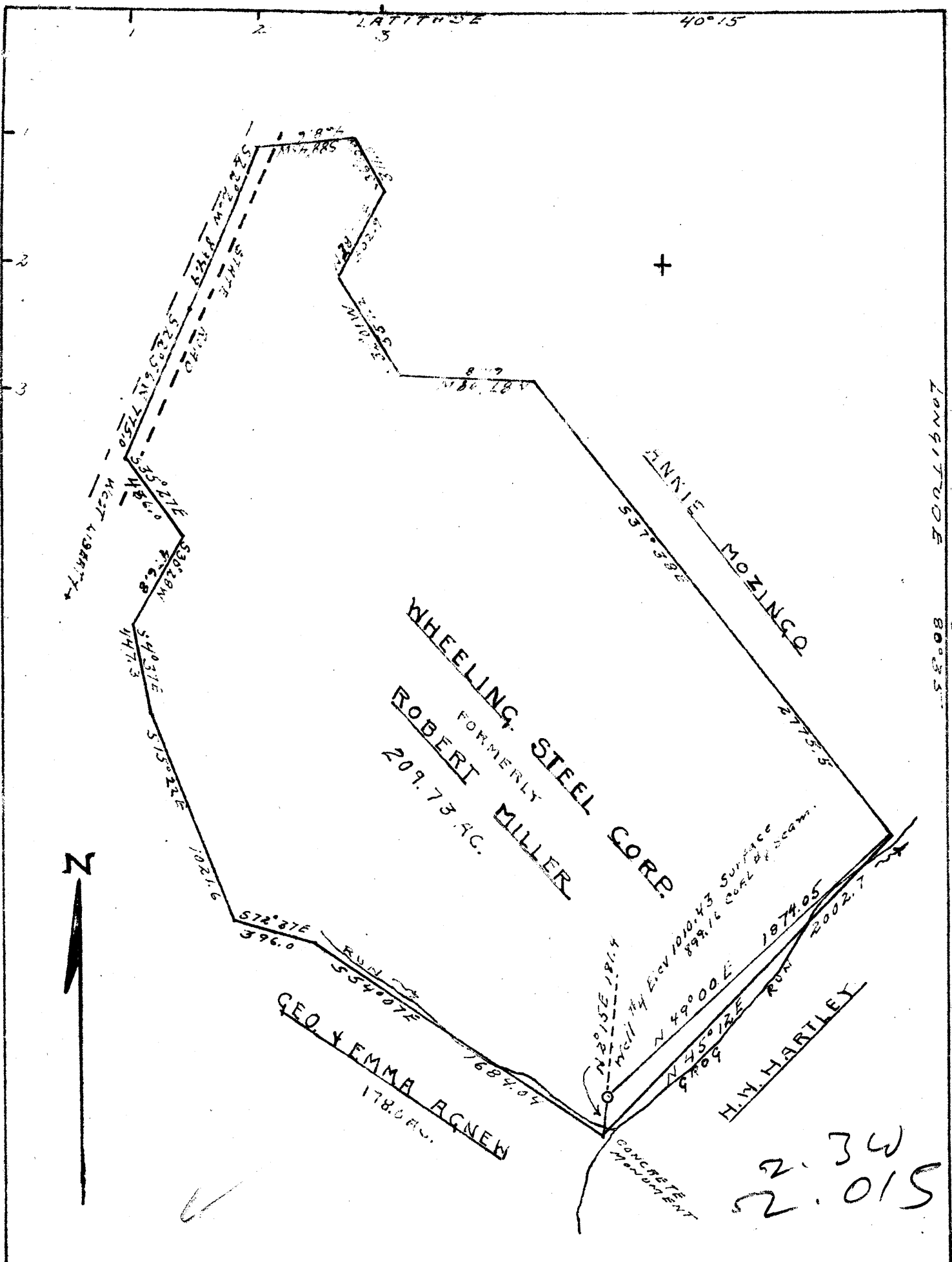
15' Quad _____
(sec.)

7.5' Quad Tiltonville

District Buffalo

WELL LOCATION PLAT

County 009 **Permit** 30045



W. B. Hoke

BRO-45 A
 Buffalo Sth
 Brode County
 & Wheeling (NC)