

40°25'00"

Latitude

80°35'00"

Longitude

2.76s  
.33w

Topo Location

7.5' Loc. \_\_\_\_\_ 15' Loc. \_\_\_\_\_  
(calc.) \_\_\_\_\_

Company McKum Oil Co

Farm Thomas McKum #5

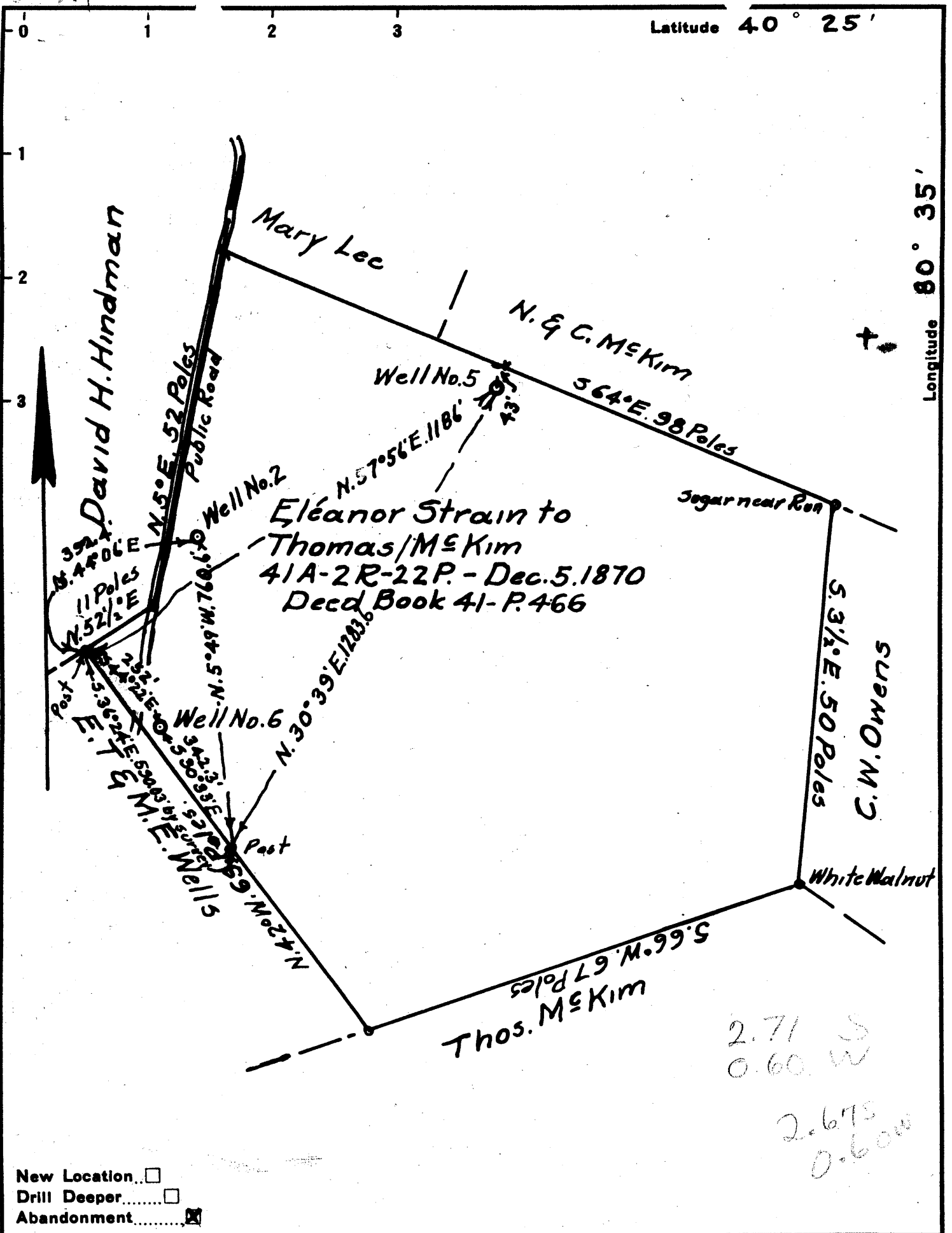
15' Quad \_\_\_\_\_  
(sec.)

7.5' Quad Winston

District Cross Creek

WELL LOCATION PLAT

County 009 Permit 30049



New Location   
 Drill Deeper   
 Abandonment

Company McKim Oil Co  
 Address Holidays Cove, W. Va.  
 Farm Thomas McKim  
 Tract \_\_\_\_\_ Acres 41A-2R-22P Lease No. \_\_\_\_\_  
 Well (Farm) No. 2-5E6 Serial No. \_\_\_\_\_  
 Elevation (Spirit Level) E-1123  
 Quadrangle Steubenville  
 County Brooke District Cross Creek  
 Engineer Walter W. Stegman  
 Engineer's Registration No. 394  
 File No. \_\_\_\_\_ Drawing No. \_\_\_\_\_  
 Date Aug 15, 1945 Scale 1 Inch = 300 Feet

STATE OF WEST VIRGINIA  
 DEPARTMENT OF MINES  
 OIL AND GAS DIVISION  
 CHARLESTON

**WELL LOCATION MAP**  
 FILE NO. BRO-49

+ Denotes location of well on United States Topographic Maps, scale 1 to 62,500, latitude and longitude lines being represented by border lines as shown.

- Denotes one inch spaces on border line of original tracing.