

40°25'00"

Latitude

80°30'00"

Longitude

2535  
197w

**Topo Location**

7.5' Loc. \_\_\_\_\_ 15' Loc. \_\_\_\_\_  
 \_\_\_\_\_ (calc.) \_\_\_\_\_

Company Manufact Lt+Ht

Farm AD Stansberry #1

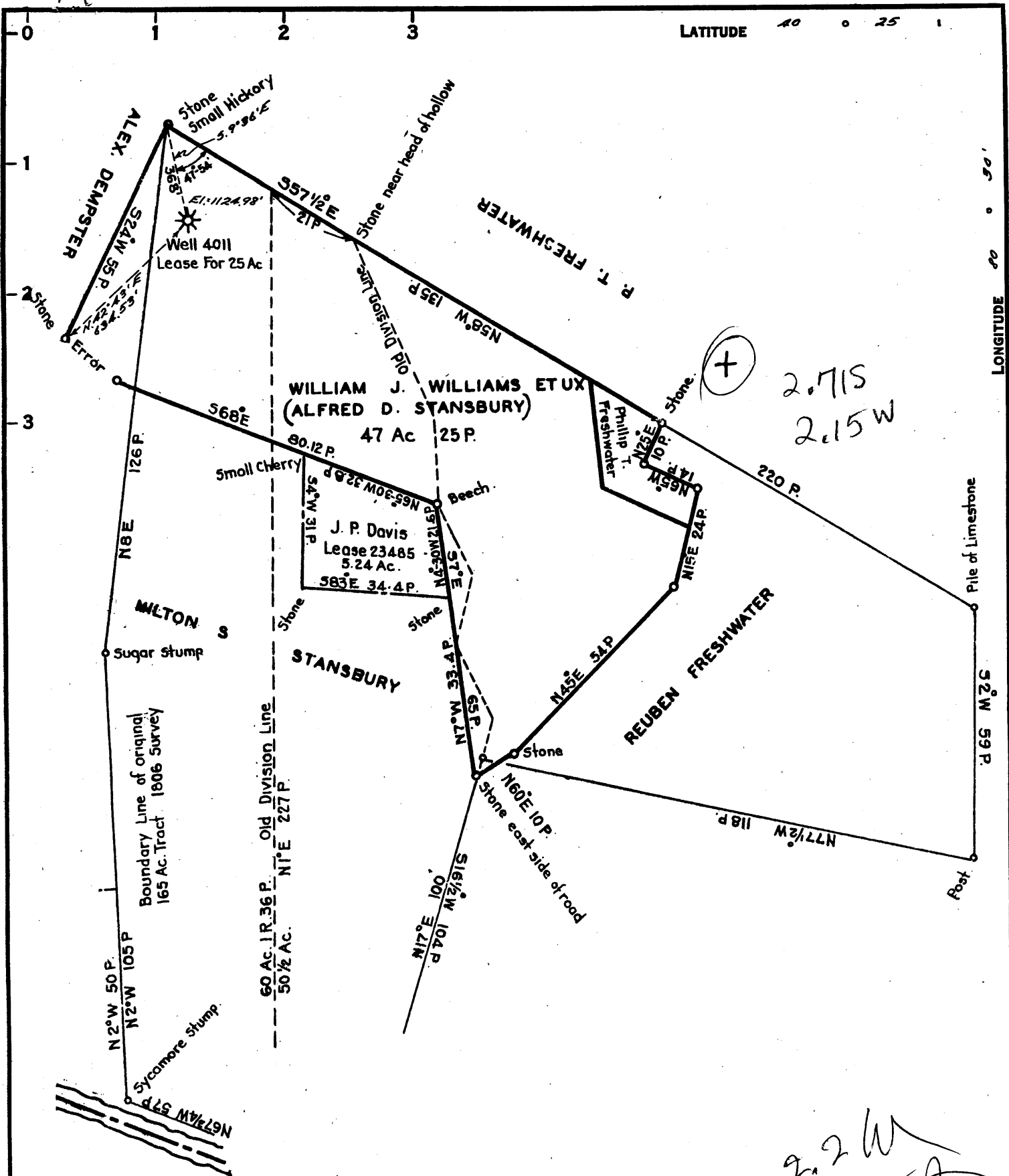
15' Quad \_\_\_\_\_  
(sec.)

7.5' Quad Wenton

District Cross Creek

**WELL LOCATION PLAT**

County 009 Permit 30065



2.715  
2.15 W

2.2 W  
2.75 P

COAL OWNED BY \_\_\_\_\_

NEW LOCATION.....

DRILL DEEPER.....

ABANDONMENT.....

**JUL 12 1960**

M-25-15420

COMPANY THE MANUFACTURERS LIGHT & HEAT

ADDRESS 800 UNION TRUST BLDG. PEN. PA.

FARM A. D. STANSBERRY

TRACT \_\_\_\_\_ ACRES 25 LEASE No. 23482

WELL (FARM) No. 1 SERIAL No. 4011

ELEVATION (SPIRIT LEVEL) 1124.98'

QUADRANGLE STEBENVILLE

COUNTY BROOKE DISTRICT CROSS CREEK

ENGINEER Robert M. Aull

ENGINEER'S REGISTRATION No. 361-E (R.G.)

FILE No. \_\_\_\_\_ DRAWING No. Y-25-183

DATE 18 MAY 1960 SCALE 1" = 500'

STATE OF WEST VIRGINIA  
DEPARTMENT OF MINES  
OIL AND GAS DIVISION  
CHARLESTON

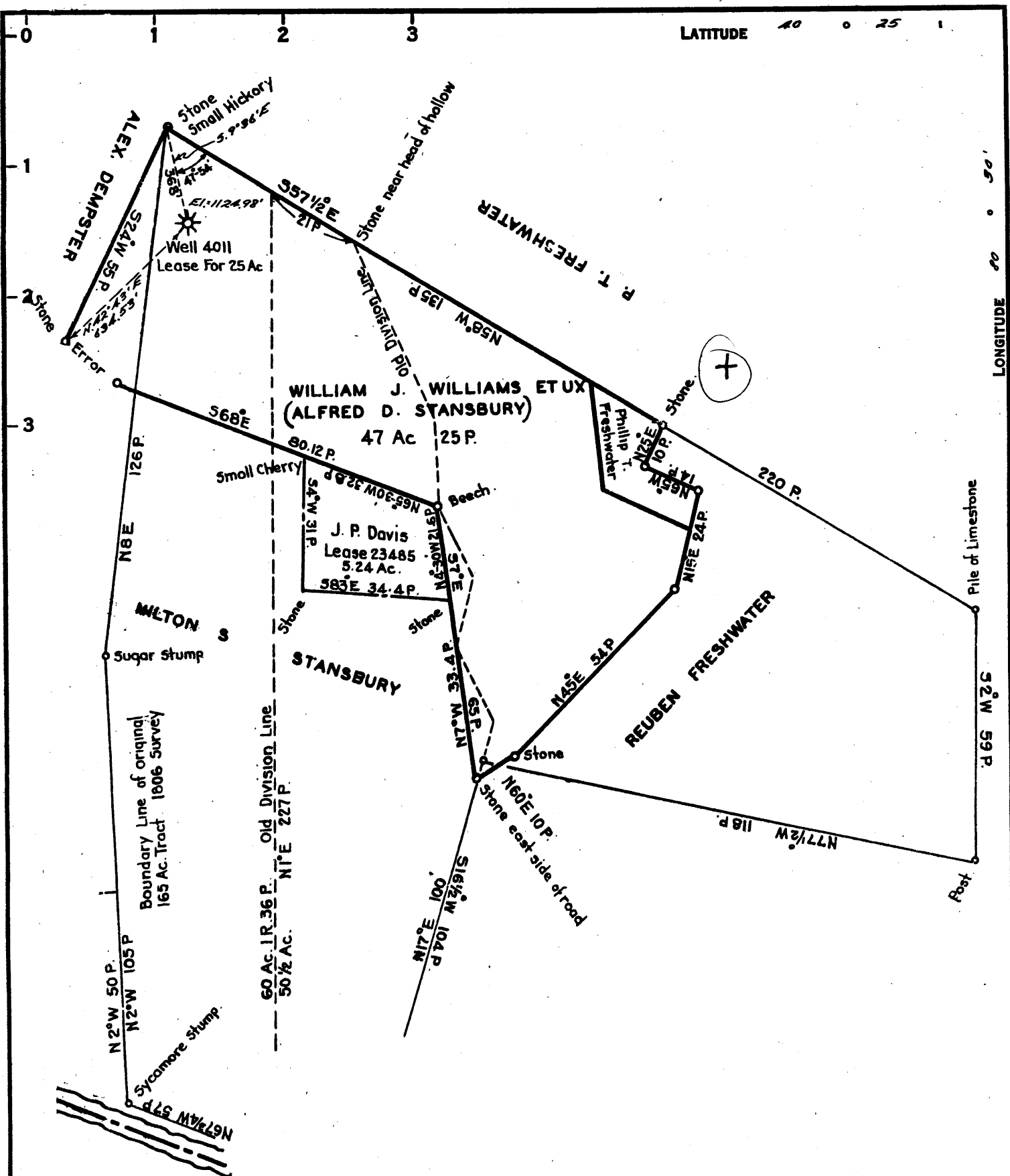
**WELL LOCATION MAP**

FILE No. BRO-65-A

+ DENOTES LOCATION OF WELL ON UNITED STATES TOPOGRAPHIC MAPS. SCALE 1 TO 62,500. LATITUDE AND LONGITUDE LINES BEING REPRESENTED BY BORDER LINES AS SHOWN.

— DENOTES ONE INCH SPACES ON BORDER LINE OF ORIGINAL TRACING.

A. D. STANSBERRY No. 1 (4011) - M. L. & H. Co. (012) BRO-65-A



LATITUDE 40 0 25 1

LONGITUDE 80 0 50'

COAL OWNED BY \_\_\_\_\_

NEW LOCATION.....

DRILL DEEPER.....

ABANDONMENT.....

M-25-15420

COMPANY THE MANUFACTURERS LIGHT & HEAT

ADDRESS 800 UNION TRUST BLDG. PEN. PA.

FARM A. D. STANSBERRY

TRACT \_\_\_\_\_ ACRES 25 LEASE NO. 23482

WELL (FARM) No. 1 SERIAL No. 4011

ELEVATION (SPIRIT LEVEL) 1124.98'

QUADRANGLE STEBENVILLE

COUNTY BROOKE DISTRICT CROSS CREEK

ENGINEER Robert M. Nail

ENGINEER'S REGISTRATION No. 361-E (B.G.)

FILE No. \_\_\_\_\_ DRAWING No. V-25-183

DATE 18 MAY 1960 SCALE 1" = 500'

STATE OF WEST VIRGINIA  
DEPARTMENT OF MINES  
OIL AND GAS DIVISION  
CHARLESTON

WELL LOCATION MAP

File No. BR0-65-A

+ DENOTES LOCATION OF WELL ON UNITED STATES TOPOGRAPHIC MAPS, SCALE 1 TO 62,500. LATITUDE AND LONGITUDE LINES BEING REPRESENTED BY BORDER LINES AS SHOWN.

— DENOTES ONE INCH SPACES ON BORDER LINE OF ORIGINAL TRACING.