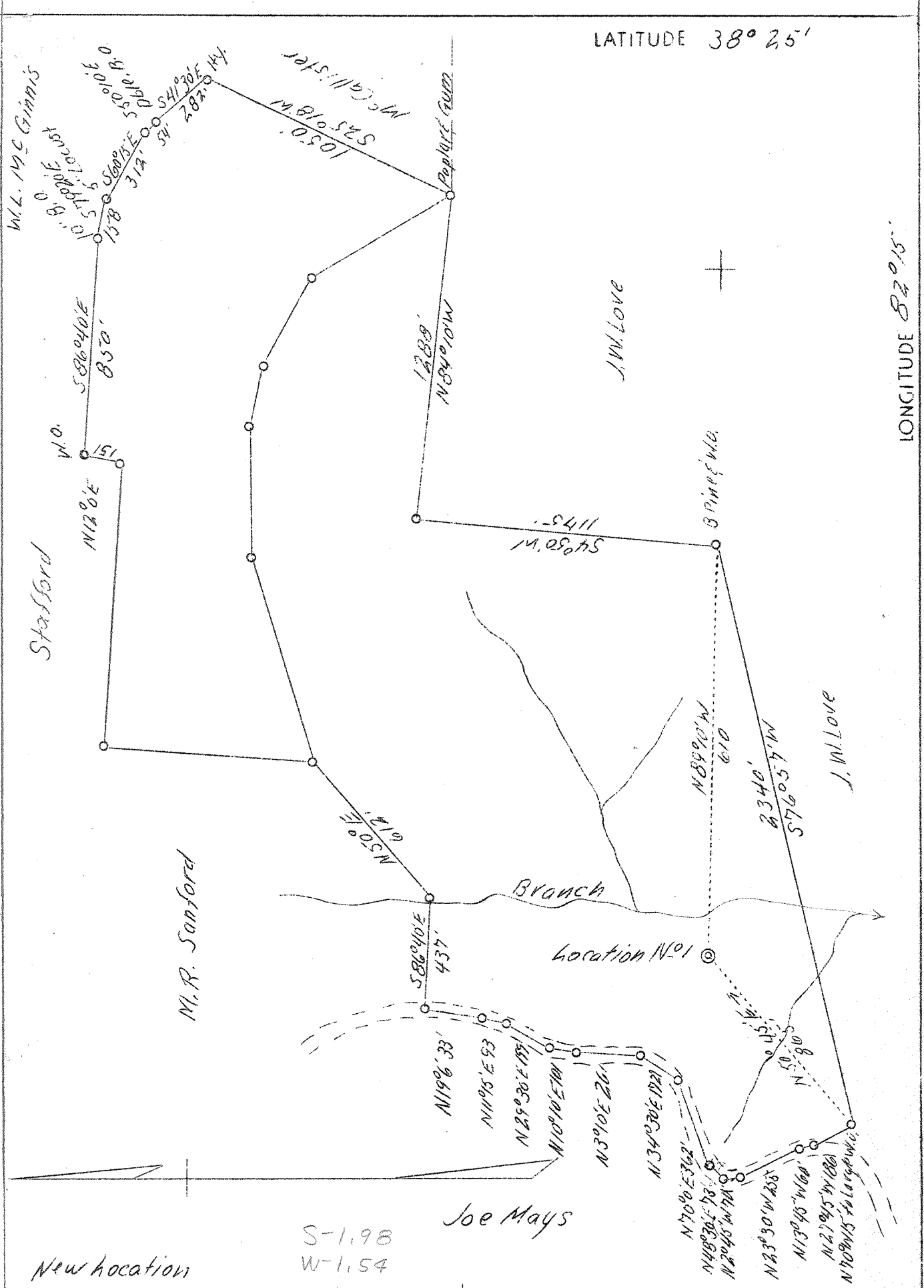


M



Company	Summit Gas & Dev. Co. Inc.	STATE OF WEST VIRGINIA Department of Mines OIL & GAS DIVISION Charleston
Address	2839 Fourth Avenue, Huntington, W. Va.	
Farm	Wm. N. Clay	WELL LOCATION MAP File No. <u>Cab-360</u>  x Denotes location of well on U. S. Topographic Maps, scale 1 to 62,500, latitude and longitude lines being represented by border lines as shown.  - Denotes one inch spaces on border line of original tracing.
Tract	1	
Acres	140	
Well (Farm) No.	1	
Elevation (SL)	590	
Quadrangle	Guyandot	
County	Cabell	
District	Barboursville	
Engineer	G. C. Ewing	
Eng. Reg. No.	309	
Date	July 8, 1939	
Scale	1" = 500'	

WEST VIRGINIA DEPARTMENT OF MINES

OIL & GAS DIVISION

W E L L R E C O R D

Permit No. Cab-360

Gas Well

Guyandot Quad.

CASING & TUBING

Company	Summit Gas & Dev. Co.	10	37-6
Address	2839 - 4th Ave., Huntington, W. Va.	8-1/4	523
Farm	W. N. Clay ACRES 145	6-5/8	1746
Location	Guyan River	5-3/16	601
Well No.	1 ELEV. 590		
District	McComas - Cabell County	Packer - Stone	
Surface & Mineral	W. N. Clay, Barboursville, W. Va.		
Commenced	Aug. 7, 1939		
Completed	Oct. 1939		
Shot	10/18/39-10/21/39 - Depth 2192-2200 2700-3260		
Open Flow	-		
Volume	-		
Rock Pressure	550 lbs. 48 hrs.		
Fresh Water	50, 165 & 875 hole full		
Salt Water	1132-1138 & 1625-1680		

Estimated Colors		H <sub>01</sub>	Tap Base Result		Formation Colors		H <sub>01</sub>	Tap Base Result	
Surface		s	0	37 1/2					
Sand	gr	s	37 1/2	110	HFV				
Red Rock	red	s	110	155					
Sand	gr	s	155	165	HFV				
Slate	drk	m	165	200					
R. Rock	red	m	200	223					
White S.	lgt	h	223	248					
R. Rock	red	m	248	253					
Slate&Sand	gr	m	253	600					
Slate & Shells	lgt	h	600	650					
Sand & Slate	lgt	h	650	708					
Coal	drk	m	708	716					
Sand	lgt	m	716	875					
Slate	lgt	h	875	880					
B. Lime	drk	h	880	900					
Slate&Lime	drk	h	900	1025					
Gritty Lime	lgt	h	1025	1081					
Salt S.	lgt	m	1081	1337	S Water				
Little Lime	lgt	h	1337	1360					
B. Lime	lgt	h	1360	1535					
S. & Shells	lgt	h	1535	1625					
Injun Sand	lgt	m	1625	1680					
B. Slate	drk	m	1680	2185					
Coffee Shale	drk	m	2185	2192					
Berea	lgt	h	2192	2200	G 2194				
Slate&Shells	drk	s	2200	2665					
B. Shale	drk	m	2665	3258	Gas 2700 & 3250				