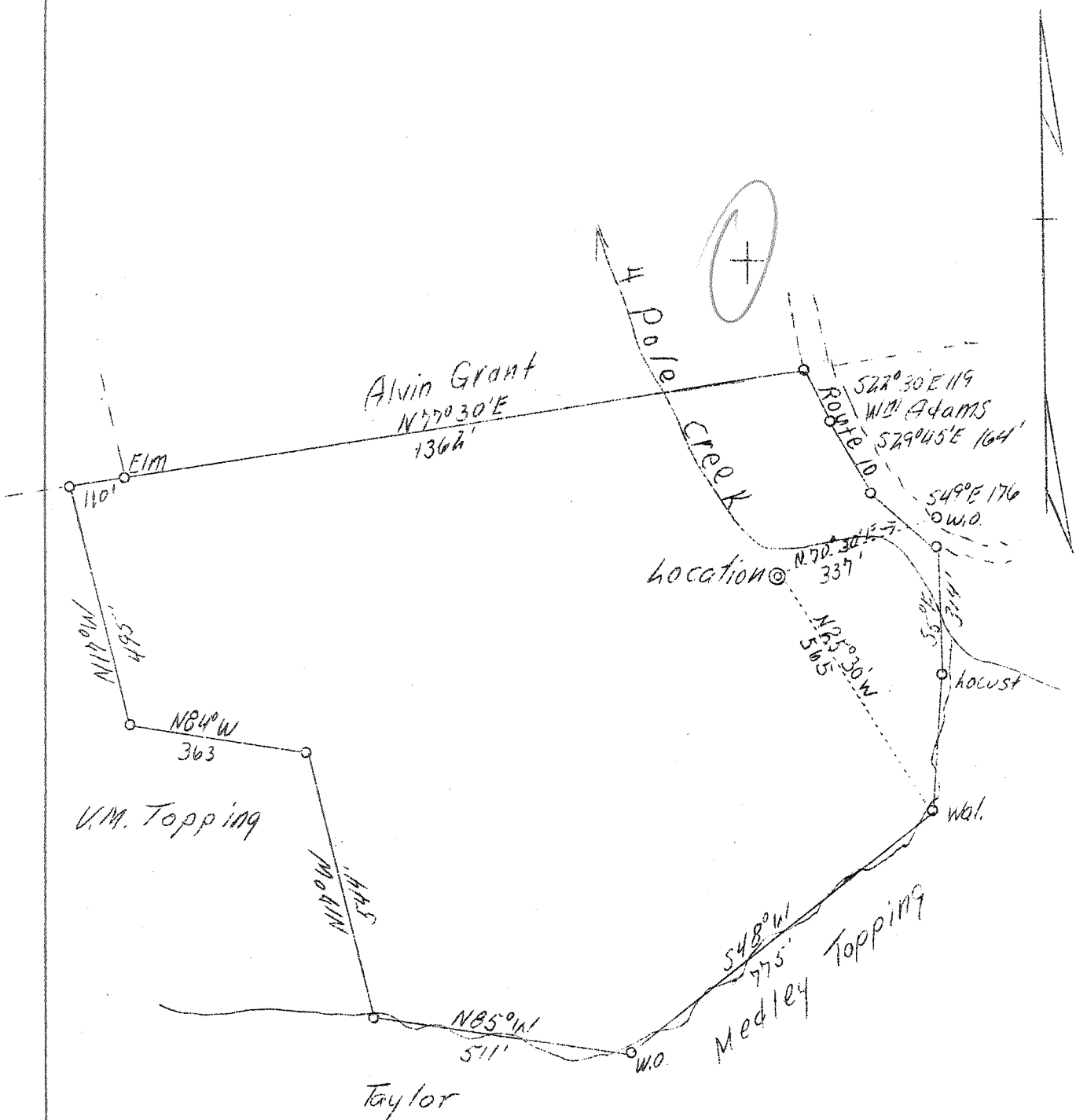


LATITUDE 38° 25'

LONGITUDE 82° 20'



S-2.34
W-2.48

New location See Vol 1 P 40

Company	Four Pole Gas Co.,
Address	H. C. Francis, Agent, Prestonburg, Ky.
Farm	Virgil M. Topping
Tract	1
Acres	44
Well (Farm) No.	1
Elevation (SL)	610
Quadrangle	Guyandot
County	Cabell
District	Guyandot
Engineer	G. C. Ewing
Eng. Reg. No.	309
Date	July 12, 1939
Scale	1" = 300'

STATE OF WEST VIRGINIA
Department of Mines
OIL & GAS DIVISION
Charleston

WELL LOCATION MAP

File No. Cab-361

x Denotes location of well on U. S. Topographic Maps, scale 1 to 62,500, latitude and longitude lines being represented by border lines as shown.

- Denotes one inch spaces on border line of original tracing.

No samples

Dec. 1939

WEST VIRGINIA DEPARTMENT OF MINES
OIL & GAS DIVISION
W E L L R E C O R D

Permit No. Cab-361
Guyandot Quad.

Gas Well
CASING & TUBING

Company	Four Pole Gas Co.	10	7	7
Address	Prestonsburg, Ky.	8-1/4	122	122
Farm	V. M. Topping	6-5/8	1341	1341
Location	Four Pole Creek			
Well No.	1			
District	ELEV. 610			
Surface & Mineral	- Cabell County			
Address	V. M. Topping			
Commenced	Route 1, Huntington, W. Va.			
Completed	Aug. 17, 1939			
Shot	Oct. 28, 1939			
Open Flow	at 3308'			
Volume	30/10ths Water in 1 inch			
Rock Pressure	52,000 c.f.			
Fresh Water	420 lbs. 72 hrs.			
Salt Water	20			
	1105			

Formation Color ¹⁷/₅ *Top Base Result* *Formation Color* ¹⁷/₅ *Top Base Result*

Formation	Color	Top	Base	Result	Formation	Color	Top	Base	Result
Sand	gr	m	6	225	W				
Slate&Shells	wh		225	731					
Slate	wh		731	1030					
Salt Sand	wh		1030	1075					
Slate	gr		1075	1105					
Sand	brn	m	1105	1220					
Red Rock	red		1220	1225					
Slate	gr		1225	1245					
L. Lime	wh		1245	1260					
Concil Cave	wh		1260	1265					
Big Lime	wh	h	1265	1427					
Keener Sand			1427	1480					
Slate&Shells	gr		1480	1565					
Injun Sand	gr		1515	1550					
Slate&Shells	gr		1550	1525					
Black Lime	dk		1575	1585					
Slate&Shells	gr		1585	1985					
Sand	tan		1985	2025					
Slate	gr		2025	2092					
Berea Sand	gr		2092	2100					
Slate	gr		2100	2155					
Brown Shale			2155	2250					
White Slate	wh		2250	2530					
Brown Shale	brn		2530	2630					
Grey Shale	gr		2630	2705					
Brown Shale			2705	2805	Gas 2748				
Grey Shale			2805	2840	Gas 2805				
Brown Shale			2840	2890					
Grey Shale			2890	2900					
Brown Shale			2900	2930					
Grey Shale			2930	2950					
Brown Shale			2950	3058	Gas 2965				
					Gas 3032				
White Slate			3058	3254					
Brown Shale			3254	3308					

Coal. Lime

3308

T.D. 3308

461