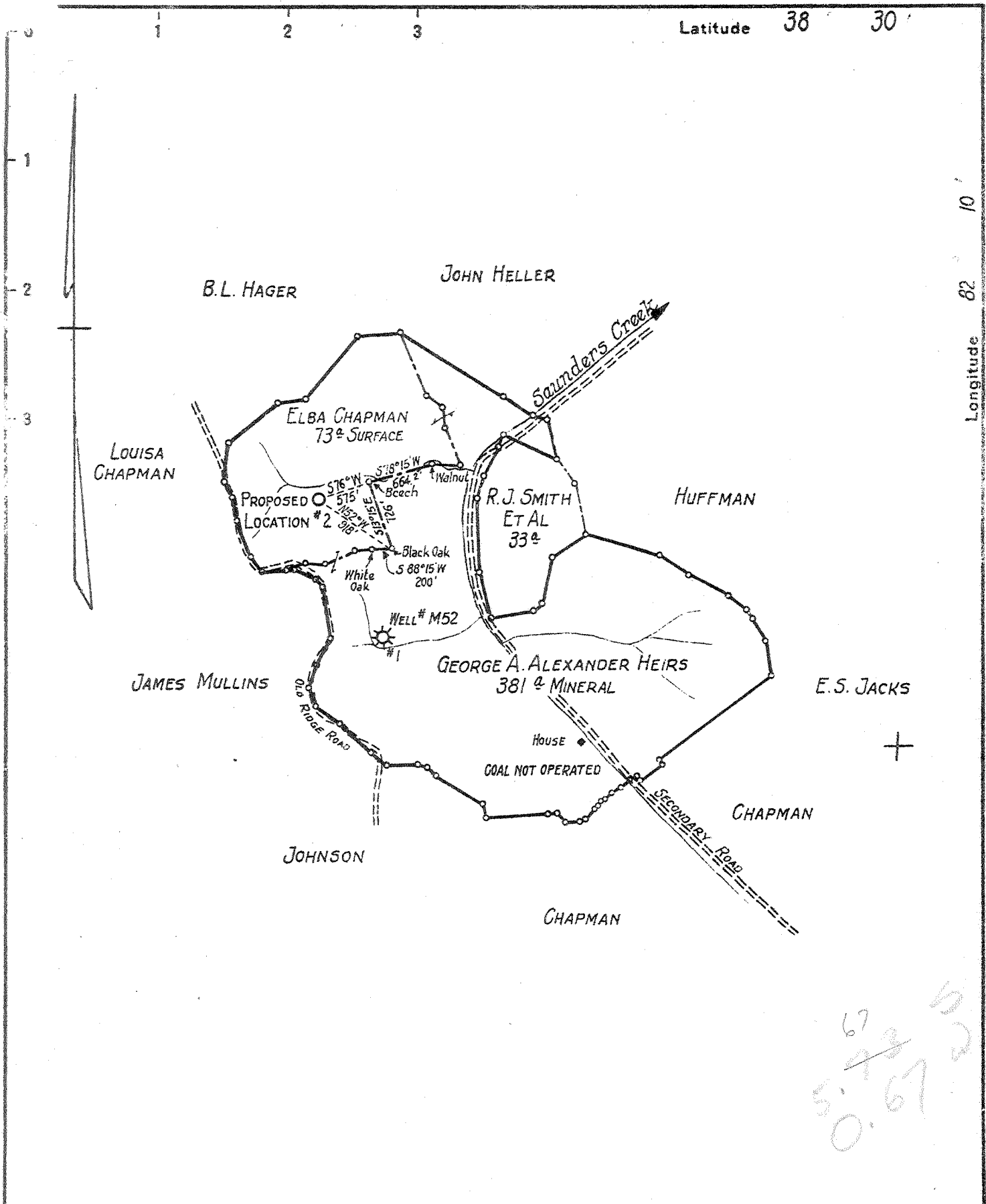


M

Latitude 38 30'

Longitude 82 10'



67  
~~5.73~~  
 0.67  
 5  
 2

New Location  X  
 Drill Deeper   
 Abandonment

Company	MONICKEL GAS COMPANY		
Address	401 UNION BLDG., CHARLESTON, W.VA.		
Farm	GEORGE A. ALEXANDER HEIRS		
Tract	Acres	Lease No.	
	381	141 M.	
Well (Farm) No.	2	Serial No.	M55
Elevation (Spirit Level) _____			
Quadrangle	MILTON N. W.		
County	District		
CABELL	GRANT		
Engineer	L. B. DORSEY		
Engineer's Registration No.	402		
File No.	Drawing No.		
3	W043		
Date	JULY 31, 1941. Scale 1" = 1320'		

STATE OF WEST VIRGINIA  
 DEPARTMENT OF MINES  
 OIL AND GAS DIVISION  
 CHARLESTON

**WELL LOCATION MAP**  
 FILE NO. CAB-411

+ Denotes location of well on United States Topographic Maps, scale 1 to 62,500, latitude and longitude lines being represented by border lines as shown.  
 - Denotes one inch spaces on border line of original tracing.

WEST VIRGINIA DEPARTMENT OF MINES  
OIL & GAS DIVISION  
W E L L R E C O R D

Permit # Cab-411

Gas Well.

Milton Quad.

Company Monickel Gas Co.  
Address 801 Union Bldg. Charleston, W.Va.  
Farm G.A.Alexander Heirs Acres 381  
Location Saunders Creek  
Well No. 2, Serial No. M.-55 Elev. 679.48'  
District Grant County Cabell  
Surface G.A. Alexander Heirs, Milton, W.Va.  
Commenced 7-30-41  
Completed 8-31-41  
Shot --  
Flow 10/10ths W. in 2"  
Volume 133 M C F  
Rock Pressure 660 lbs. 72 hrs.  
Fresh Water 725

10 634'4" Pulled  
8½ 1577' 1577'  
PACKER  
Anchor Packer  
Size--  
Depth set 1595'

Drilled by: Company  
Tools #1

Surface	0	19
Sand	19	32
Blue Mud	32	75
Red Rock	75	85
Sand	85	125
Slate	125	150
Red Rock	150	160
Sand	160	235
Slate	235	326
Sand	326	415
Slate & Shells	415	650
Sand	650	780
Black Slate	780	810
Slate & Shells	810	1185
Black Slate	1185	1190
Slate & Shells	1190	1235
- Salt Sand	1235	1420
Slate & Shells	1420	1510
- Maxon Sand	1510	1521
Slate	1521	1530
Black Lime	1530	1557
• Big Lime	1557	1567
• Pencil Slate	1567	1573
• Big Lime	1573	1684
TOTAL DEPTH		1684

Water sand 695'  
Hole full water 725'

Gas Tests:  
1633-1638 22/10 W 2"  
1638-1643 33/10 W 2"

Test made and well shut in August 31,  
1941 at 3:00 P.M.  
Gauged 10/10 in 2" water when shut in.  
72 hour R.P. 660#  
Steel line run 1566'