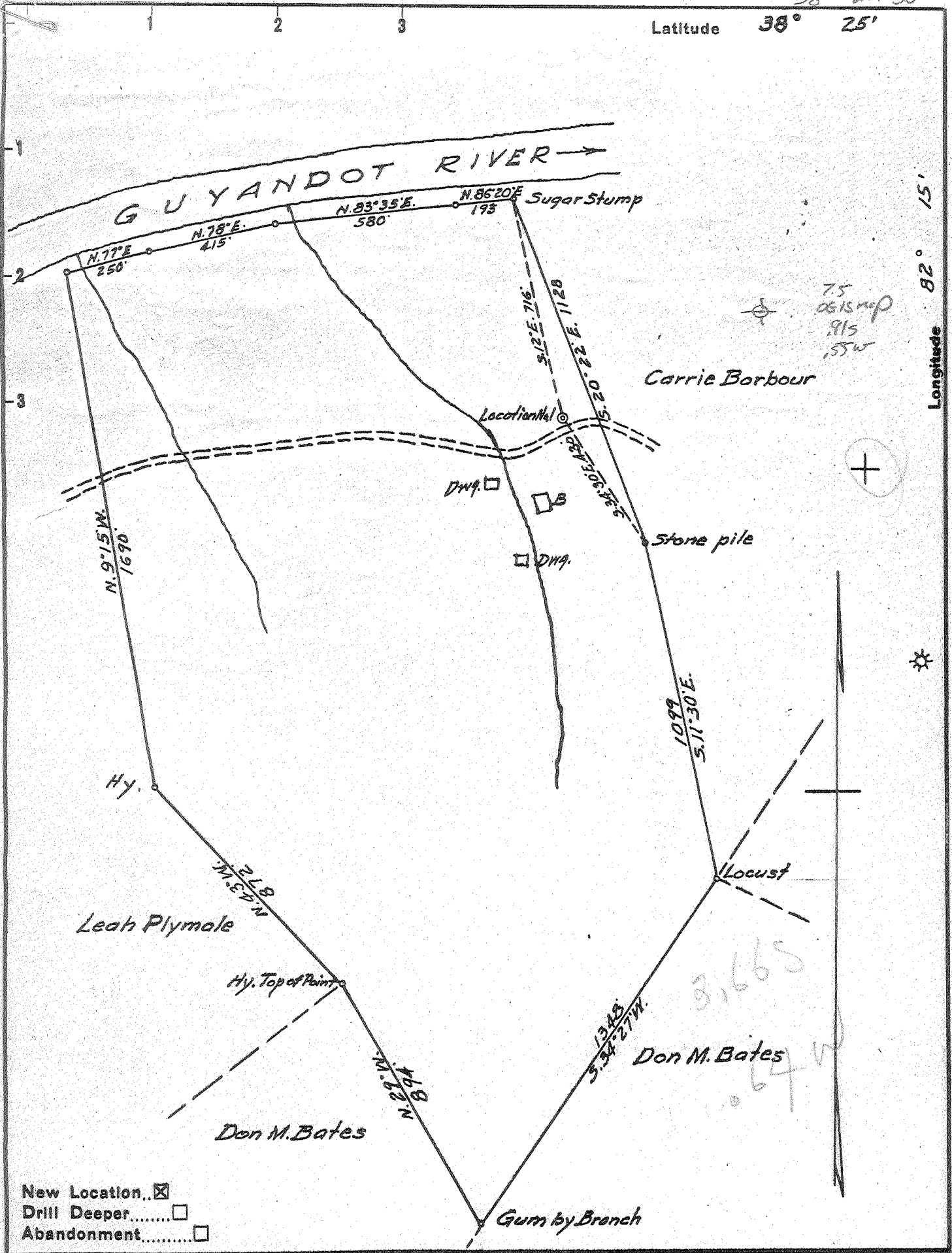


Latitude  $38^{\circ} 25'$

Longitude  $82^{\circ} 15'$



- New Location...
- Drill Deeper.....
- Abandonment.....

Company DENNIS M. ROY

Address HUNTINGTON, W. VA.

Farm DON M. BATES

Tract \_\_\_\_\_ Acres 97.03 Lease No. \_\_\_\_\_

Well (Farm) No. 1 Serial No. \_\_\_\_\_

Elevation (Spirit Level) 585

Quadrangle GUYANDOT

County CABELL District McCOMAS

Engineer G. B. Gwinn

Engineer's Registration No. 309

File No. \_\_\_\_\_ Drawing No. \_\_\_\_\_

Date 8-20-53 Scale 1" = 400'

STATE OF WEST VIRGINIA  
DEPARTMENT OF MINES  
OIL AND GAS DIVISION  
CHARLESTON

**WELL LOCATION MAP**  
FILE NO. CAB-466

+ Denotes location of well on United States Topographic Maps, scale 1 to 62,500, latitude and longitude lines being represented by border lines as shown.

- Denotes one inch spaces on border line of original tracing.

200



STATE OF WEST VIRGINIA  
DEPARTMENT OF MINES  
OIL AND GAS DIVISION

WELL RECORD

Permit No. Sugardot  
Cat 466

Oil or Gas Well Gas  
(KIND)

Company Jennin M. Roy - Bates Co. G.  
Address 925 Jefferson Ave. Huntington, W. Va.  
Farm Don Bates Acres 106  
Location (waters) Swann Branch  
Well No. \_\_\_\_\_ Elev. 585  
District McComas County Cabell  
The surface of tract is owned in fee by Don Bates  
Huntington, W. Va. Address \_\_\_\_\_  
Mineral rights are owned by Don Bates  
Address \_\_\_\_\_  
Drilling commenced Sept 17, 1953  
Drilling completed Oct 31, 1953  
Date Shot Oct 31 From 2220 To 2240  
With 3400 Hercules Powder  
Open Flow 15/10ths Water in 2 Inch  
\_\_\_\_\_ /10ths Merc. in \_\_\_\_\_ Inch  
Volume 185.000 Cu. Ft.  
Rock Pressure 450 lbs. 24 hrs.  
Oil \_\_\_\_\_ bbls., 1st 24 hrs.  
Fresh water \_\_\_\_\_ feet \_\_\_\_\_ feet  
Salt water \_\_\_\_\_ feet \_\_\_\_\_ feet

Casing and Tubing	Used in Drilling	Left in Well	Packers
Size			Kind of Packer
16			
18			
10	<u>30</u>	<u>30</u>	Size of
8 1/4	<u>425</u>		
6 3/4	<u>1732</u>	<u>1732</u>	Depth set
5 3/16	<u>50 inner 50</u>		
3			Perf. top
2			Perf. bottom
Liners Used	<u>50' 5/3/16</u>		Perf. top
			Perf. bottom

CASING CEMENTED \_\_\_\_\_ SIZE \_\_\_\_\_ No. Ft. \_\_\_\_\_ Date \_\_\_\_\_  
COAL WAS ENCOUNTERED AT \_\_\_\_\_ FEET \_\_\_\_\_ INCHES  
\_\_\_\_\_ FEET \_\_\_\_\_ INCHES \_\_\_\_\_ FEET \_\_\_\_\_ INCHES  
\_\_\_\_\_ FEET \_\_\_\_\_ INCHES \_\_\_\_\_ FEET \_\_\_\_\_ INCHES

Formation	Color	Hard or Soft	Top	Bottom	Oil, Gas or Water	Depth Found	Remarks
Surface			0	33			
slate			33	85			
Red Rock			95	115			
" "			275	305			
Slate & Sand			305	850			
lime shell			850	857			
slate & sand			857	1121			
malon			1121	1200			
slate & sand			1200	1402			
lime shell			1402	1420			
Big lime			1425	1575			
Injun sand			1650	1720			
Berea grit			2220	2231			
Basnet 25'			2251				
fatal death			2251				

