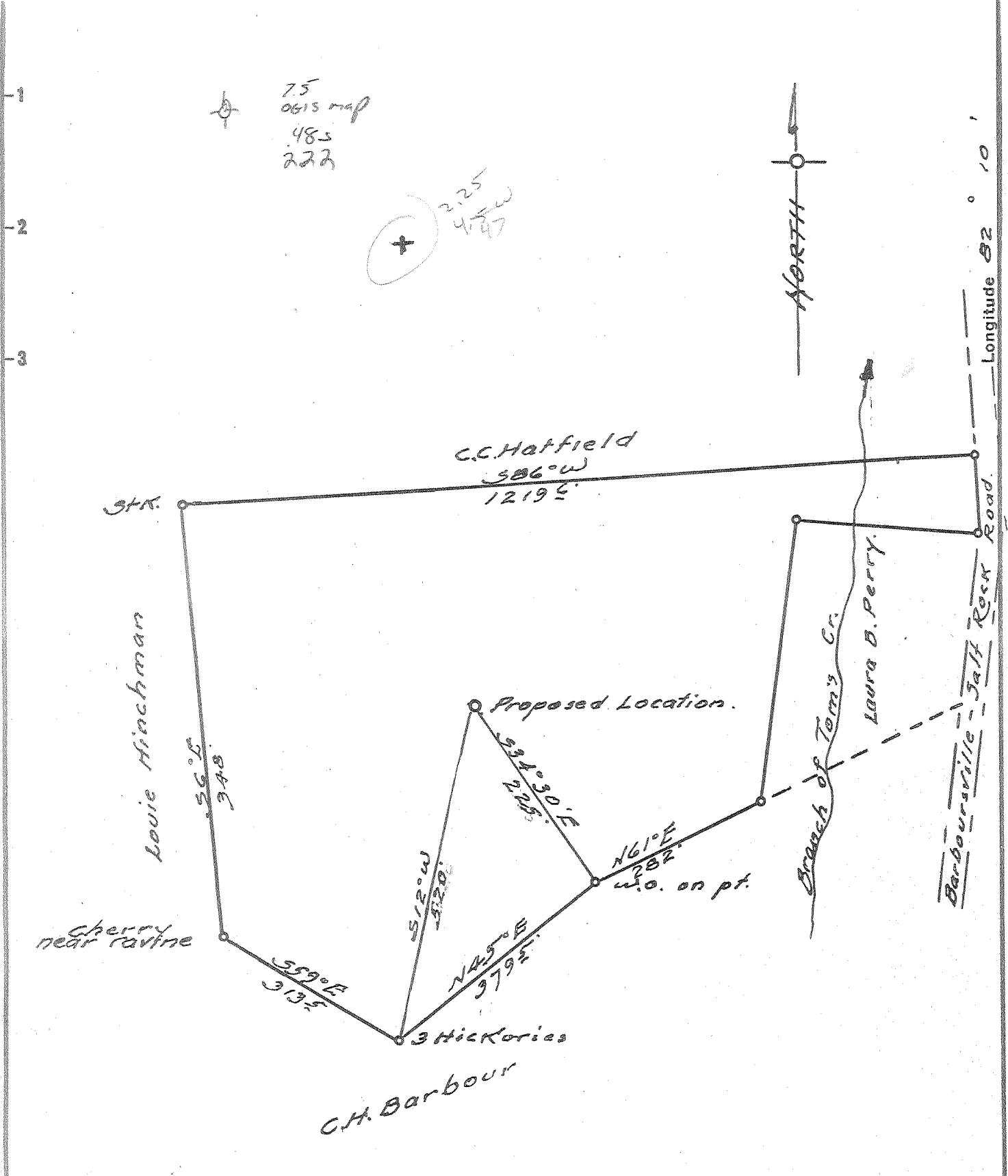


M 38° 22' 30"
 Latitude 38° 25'



New Location.
 Drill Deeper.....
 Abandonment.....

Company W.L. & G.H. DIAL
 Address 2778 - Elmwood Ave. Huntington, W. Va.
 Farm Dial (W.L. & C.H. Dial)
 Tract _____ Acres 14 Lease No. _____
 Well (Farm) No. 1 Serial No. 1
 Elevation (Spirit Level) 705.2
 Quadrangle Milton W.C.
 County Cabell District McComas
 Engineer Basil S. Burgess
 Engineer's Registration No. 469
 File No. _____ Drawing No. _____
 Date 1-13-55 Scale 1" = 200'

STATE OF WEST VIRGINIA
 DEPARTMENT OF MINES
 OIL AND GAS DIVISION
 CHARLESTON

WELL LOCATION MAP
 FILE NO. CAB-483

+ Denotes location of well on United States Topographic Maps, scale 1 to 62,500, latitude and longitude lines being represented by border lines as shown.
 - Denotes one inch spaces on border line of original tracing.

6-6 206



STATE OF WEST VIRGINIA
DEPARTMENT OF MINES
OIL AND GAS DIVISION

WELL RECORD

Quadrangle Wilton

Permit No. CAB-483

Oil or Gas Well Gas

(KIND)

Company W. L. Dial and C. H. Dial
Address 2778 Elmwood Ave., Huntington, W. Va
Farm W. L. & C. H. Dial Acres 18.2
Location (waters) Guyan River
Well No. One (1) Elev. 705'
District McComas County Cabell

The surface of tract is owned in fee by W. L. Dial and C. H. Dial
Address 2778 Elmwood Ave., Huntington, W. Va
Mineral rights are owned by W. L. Dial and C. H. Dial
Address _____

Drilling commenced Feb. 19, 1955
Drilling completed April 23, 1955
Date Shot April 25 From 3135 to 3511
With Gelatin 80% & Hercules Powder

Open Flow 45 /10ths Water in _____ Inch
_____ /10ths Merc. in _____ Inch
Volume 283,000 Cu. Ft.

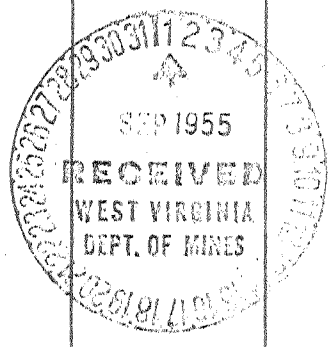
Rock Pressure 580 lbs. _____ hrs.
Oil slight trace in shala bbls., 1st 24 hrs.
Fresh water _____ feet _____ feet
Salt water _____ feet _____ feet

Casing and Tubing	Used in Drilling	Left in Well	Packers
Size			
16			Kind of Packer
18			
10			Size of
8 1/4	618' 8"	618' 8"	
6 3/4 7 od	1940'	1940'	Depth set
5 3/16			
3			Perf. top
2			Perf. bottom
Liners Used			Perf. top
			Perf. bottom

CASING CEMENTED _____ SIZE _____ No. Ft. _____ Date _____

COAL WAS ENCOUNTERED AT _____ FEET _____ INCHES
_____ FEET _____ INCHES _____ FEET _____ INCHES
_____ FEET _____ INCHES _____ FEET _____ INCHES

Formation	Color	Hard or Soft	Top	Bottom	Oil, Gas or Water	Depth Found	Remarks
Surface				10'			
Slate			10'	205'			
Sand			205'	275'			
Slate			275'	480'			
Sand			480'	545'			Enough water to drill with at 400'
Slate			545'	675'			- Water to drill with 705'
Salt Sand			675'	838'			- Hole full of water at 845'
Break			838'	845'			
Sand			845'	865'			
Slate			940'	1000'			
Sand			1000'	1025'			
Slate & Shells			1025'	1160'			
Sand			1160'	1230'			
Slate			1230'	1265'			
Maxton Sand			1265'	1330'			
Slate			1330'	1351'			
Sand			1351'	1440'			
Slate			1440'	1485'			
Sand			1485'	1553'			
Little Lime			1553'	1580'			
Pencil Cave			1580'	1585'			
Big Lime			1585'	1757'			
Slate			1757'	1763'			
Injuin Sand			1763'	1780'			
Slate & Shells			1780'	2305'			
Shells			2305'	2318'			
Slate & Shells			2318'	2373'			
Brown Shale			2373'	2380'			
Berea Grit			2380'	2395'			
Slate & Shells			2395'	2413'			
Hard Brown Shale			2413'	2505'			
Gray Shale			2505'	2835'			
White Slate			2835'	2875'			
Gray Slate			2875'	3135'			
Brown Shale			3135'	3200'			
White Shale			3200'	3237'			
Brown Shale			3237'	3500'			
White Slate			3500'	3511'			
Total depth			3511'				



Gas in Berea natural 46/100 in 1" water - Gas increase from 3385' to 3400'