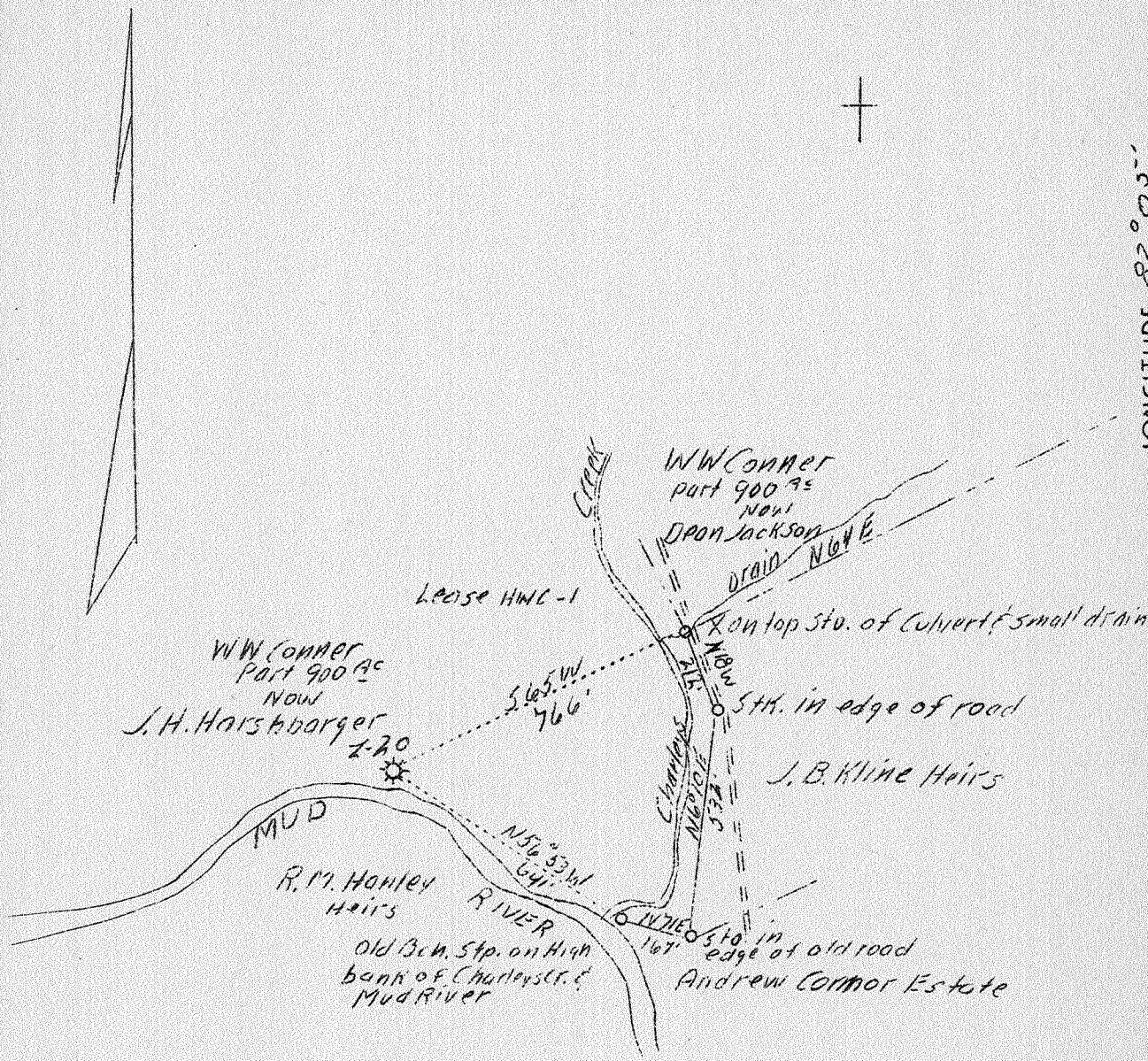


LATITUDE 38° 25''

LONGITUDE 82° 05''



(Handwritten initials)

1,31W
1,3A

ABD.

AUG 21 1939

Company	Hamilton Gas Corp.	STATE OF WEST VIRGINIA
Address	Charleston, W.Va.	Department of Mines
Farm	W.W. Conner (Now J.H. Harshbarger)	OIL AND GAS DIVISION
Tract	1	Charleston
Acres	900	
Lease No.	HWC - 1	WELL LOCATION MAP
Serial No.	Z - 20	File No. <u>Cab-70-A</u>
Well (Form) No.	2	
Pl. (S.L.)	592.44	x Denotes location of well on U.S. Topographic Maps, scale 1 to 62,500, latitude and longitude lines being represented by border lines as shown.
Quadrangle	Milton N.E. C	- Denotes one inch spaces on border line of original tracing.
County	Cabell	
District	Grant	
Eng.	D.A. Belcher	
File No.	545, Sec. 2 A-1	
Date	8/889	
Scale	1" = 400'	

X
Grant District, Cabell County, W. Va.
The Cabell Oil & Gas Co.
2-3/4 mi. S. E. of Milton.
Near Mouth of Charley Creek.
Elevation, 595' (585' ~~?~~ ~~CWL~~).
Authority, Jos. Towner.

20-A

	Top.	Bottom.
White sand (show of gas and oil)	300	330
Sand (water)	360	440
Black sand	440	455
White sand	600	650
White sand	720	760
White sand	925	1125
Pebble sand (show of oil and gas)	1100	1130 (?)
White sand (water)	1170	1270
Lime (show of oil and gas)	1315	1403
Big Injun Sand (water to drill)	1550	1640
Slate and shells	1640	2050
Berea Grit (good gas)	2050	2080
Slate and shells, to bottom	2080	2150