

Latitude  $38^{\circ} 30'$

Longitude  $82^{\circ} 15'$

U. G. SHIPE

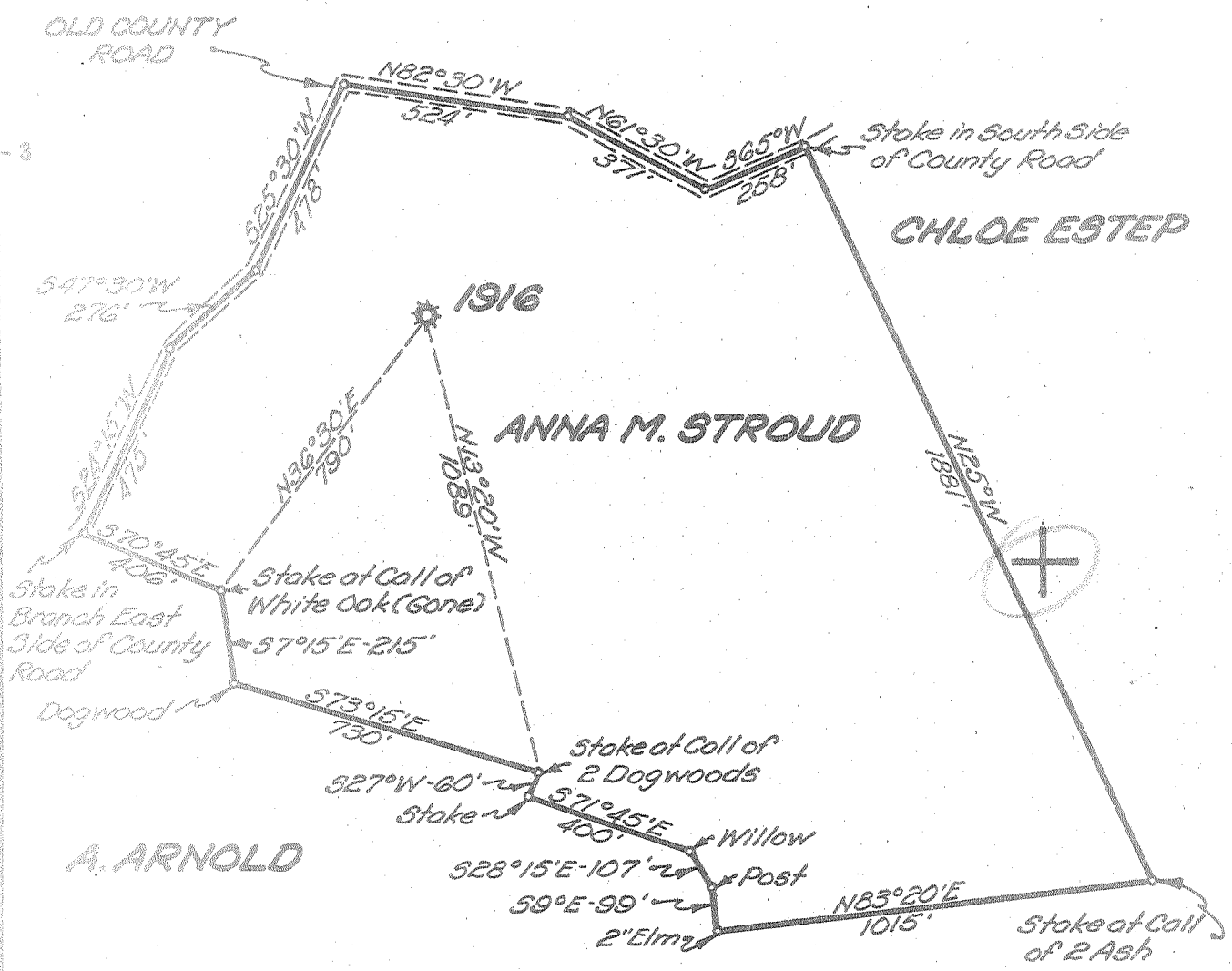
OLD COUNTY ROAD

CHLOE ESTEP

ANNA M. STROUD

A. ARNOLD

G. KUHN



- New Location
- Drill Deeper
- Abandonment

APR 26 1954

152 W  
 515 R

Company UNITED FUEL GAS CO.  
 Address CHARLESTON, W. VA.  
 Farm ANNA M. STROUD  
 Tract \_\_\_\_\_ Acres 64 Lease No. 21298  
 Well (Farm) No. 1 Serial No. 1916  
 Elevation (Spirit Level) 667.00'  
 Quadrangle GUYANDOT  
 County CABELL District BARBOURSVILLE  
 Engineer Seybert R. Jewell  
 Engineer's Registration No. 2529  
 File No. 26-63 Drawing No. \_\_\_\_\_  
 Date 4-6-54 Scale 1"=400'

STATE OF WEST VIRGINIA  
 DEPARTMENT OF MINES  
 OIL AND GAS DIVISION  
 CHARLESTON

WELL LOCATION MAP  
 FILE NO. CAB-67-A

+ Denotes location of well on United States Topographic Maps, scale 1 to 62,500, latitude and longitude lines being represented by border lines as shown.

- Denotes one inch spaces on border line of original tracing.

ANNA M. STROUD No. 1 (1916) - U. F. G. Co. - (205) CAB-67-A



STATE OF WEST VIRGINIA  
DEPARTMENT OF MINES  
OIL AND GAS DIVISION

519

Quadrangle Guyandot

WELL RECORD

Permit No. 67-A

Oil or Gas Well Gas  
(KIND)

Company UNITED FUEL GAS COMPANY  
 Address P.O. Box 1273, Charleston 25, W. Va.  
 Farm Annie M. Stroud Acres 64  
 Location (waters) Mud River  
 Well No. 1916 Elev. 667.0'  
 District Barboursville County Cabell  
 The surface of tract is owned in fee by \_\_\_\_\_  
 Address \_\_\_\_\_  
 Mineral rights are owned by Harvey E. Stroud, Gdn. & Agt. Twentieth St. Bank Address Huntington, W. Va.  
 Drilling commenced May 2, 1928  
 Drilling completed June 16, 1928  
 Date Shot 6-20-28 From \_\_\_\_\_ To \_\_\_\_\_  
 With 240 qts.  
 Open Flow 12 /10ths Water in \_\_\_\_\_ 2 \_\_\_\_\_ Inch  
 \_\_\_\_\_ /10ths Merc. in \_\_\_\_\_ Inch  
 Volume 168,960 Cu. Ft.  
 Rock Pressure 415 lbs. 48 hrs.  
 Oil \_\_\_\_\_ bbls., 1st 24 hrs.  
 Fresh water \_\_\_\_\_ feet \_\_\_\_\_ feet  
 Salt water \_\_\_\_\_ feet \_\_\_\_\_ feet

Casing and Tubing	Used in Drilling	Left in Well	Packers
Size			
16			Kind of Packer <u>OWS</u>
13			<u>Tubing Anchor</u>
10		<u>97'-6"</u>	Size of <u>3"x6-5/8"</u>
8 1/4	<u>681'</u>		Depth set <u>2024'</u>
6 3/4		<u>1736'</u>	
5 3/16			
3		<u>3305'</u>	Perf. top _____
2			Perf. bottom _____
Liners Used			Perf. top _____
			Perf. bottom _____

CASING CEMENTED \_\_\_\_\_ SIZE \_\_\_\_\_ No. Ft. \_\_\_\_\_ Date \_\_\_\_\_

COAL WAS ENCOUNTERED AT \_\_\_\_\_ FEET \_\_\_\_\_ INCHES  
 \_\_\_\_\_ FEET \_\_\_\_\_ INCHES \_\_\_\_\_ FEET \_\_\_\_\_ INCHES  
 \_\_\_\_\_ FEET \_\_\_\_\_ INCHES \_\_\_\_\_ FEET \_\_\_\_\_ INCHES

Formation	Color	Hard or Soft	Top	Bottom	Oil, Gas or Water	Depth Found	Remarks
Surface			0	20			
Sand			20	90			
Slate & Shells			90	1123			
Salt Sand			1123	1215			
Slate & Lime			1215	1345			
Little Lime			1345	1368			
Slate			1368	1384			
Big Lime			1384	1600			
Big Injun Sand			1600	1673			
Slate & Shells			1673	2170			
Berea Sand			2170	2180			
Slate & Shale			2180	2990			
Brown Shale			2990	3225			
Gray Slate			3225	3275			
Total depth			3275'				
							Gas from 2170' to 2180'. Shot in Berea sand with 40 qts.
							Gas at 3097 & 3207'. Shot in brown shale with 200 qts.



(Over)

NOV 12 1954

